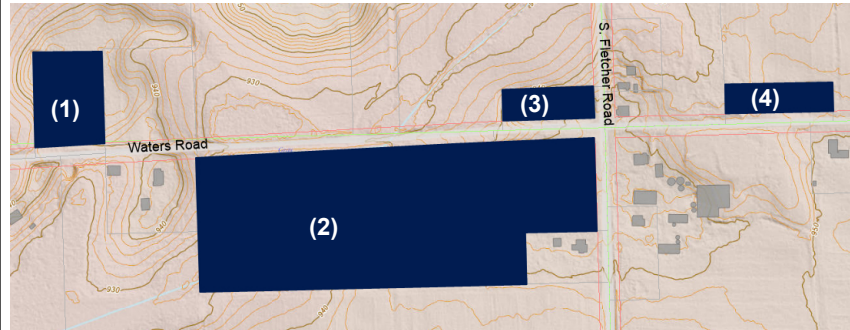
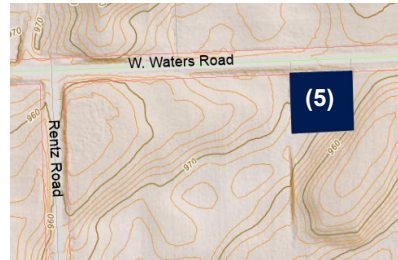


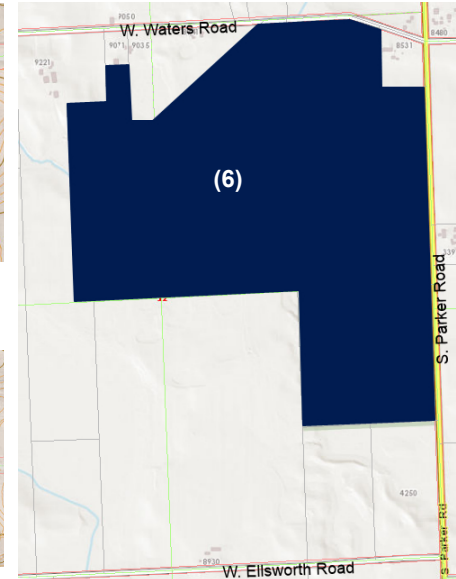
Public/Semi-Public Services (PSP) District Proposed Zoning Map Amendments



Existing cemeteries and churches
(SW 1/4 of Sect. 4, SE 1/4 of Sect. 5 &
NE 1/4 of Sect. 8)



Existing cemetery
(NW 1/4 of Section 10)



County nature preserve (Section 12)



Existing cemeteries (SE 1/4 of Section 9)



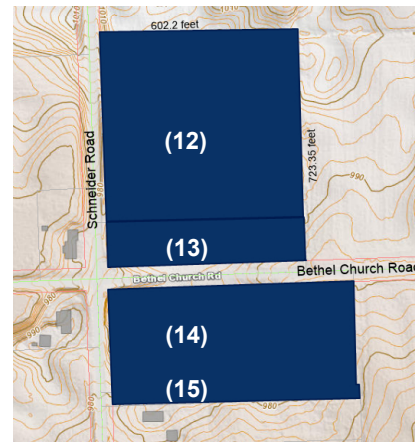
Existing cemetery
(NE 1/4 of Section 17)



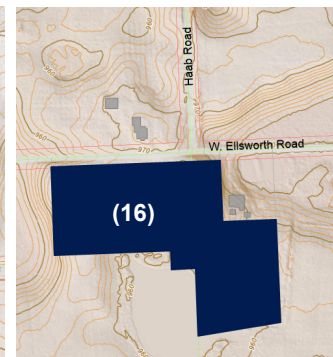
Existing cemetery
(SE 1/4 of Section 22)



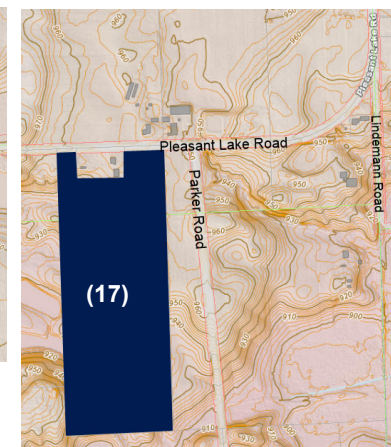
Existing cemetery
(NE 1/4 of Section 34)



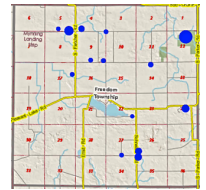
**Existing church, cemetery, and
church-owned parcel**
(SW 1/4 of Sect. 26 & NW 1/4 of Sect. 35)



**Existing church &
cemetery**
(N 1/2 of Section 14)



Existing church-owned parcel
(E 1/2 of Section 24)



LEGEND

Proposed District

PSP
Public/Semi-Public
Services District

Other Map Elements

— Road Right-of-Way
□ Quarter-Section
Line
□ Parcel Line

REZONING NOTES:

Existing Zoning District

All parcels are
currently in the
A-R (Agricultural-
Residential) District

Land Areas

- (1) 1.71 acres
- (2) 13.52 acres
- (3) 1.0 acres
- (4) 1.0 acres
- (5) 0.75 acres
- (6) 218.95 acres
- (7) 2.0 acres
- (8) 0.62 acres
- (9) 0.5 acres
- (10) 0.65 acres
- (11) 0.6 acres
- (12) 7.75 acres
- (13) 2.25 acres
- (14) 5.63 acres
- (15) 0.7 acres
- (16) 6.44 acres
- (17) 26.02 acres

