



---

**I-40**

HORIZON BOULEVARD  
& SAWMILL ROAD  
STUDIES

---

**Public Meeting**

Nov. 14, 2024



# Public Meeting

**Nov. 14, 2024**

This presentation will be about **30** minutes, followed by a Q&A. Materials will be uploaded on the Village of Milan website.



New Mexico DEPARTMENT OF  
**TRANSPORTATION**  
MOBILITY FOR EVERYONE



**I-40** HORIZON BOULEVARD & SAWMILL ROAD STUDIES

CN 6101770 | CN 6101780



Village of Milan

# Lead Agencies



NWNMCOG



I-40 HORIZON BOULEVARD & SAWMILL ROAD STUDIES

CN 6101770 | CN 6101780



# Presenters

- ❖ Rais Rizvi, PE – **Consultant Project Manager**
- ❖ Paul Steffin, PE – **Consultant Traffic Lead**
- ❖ Anthony Lujan – **Consultant Manager**
- ❖ Adrianna Day, MBA – **Consultant Public Involvement Lead**





# Meeting Goals

- Introduce the studies to the public
- Review the study process and schedules
- Review the existing conditions to consider
- Solicit public input



New Mexico DEPARTMENT OF  
**TRANSPORTATION**  
MOBILITY FOR EVERYONE



**I-40** HORIZON BOULEVARD & SAWMILL ROAD STUDIES

CN 6101770 | CN 6101780





# Study Overview



New Mexico DEPARTMENT OF  
**TRANSPORTATION**  
MOBILITY FOR EVERYONE



**I-40** HORIZON BOULEVARD & SAWMILL ROAD STUDIES

CN 6101770 | CN 6101780

# Study Scope

---

- » Evaluating the reconfiguration of the existing I-40/Horizon Boulevard interchange
- » Evaluating a new interchange at I-40 and Sawmill Road
- » Both studies will build on findings from the broader I-40 Corridor Study



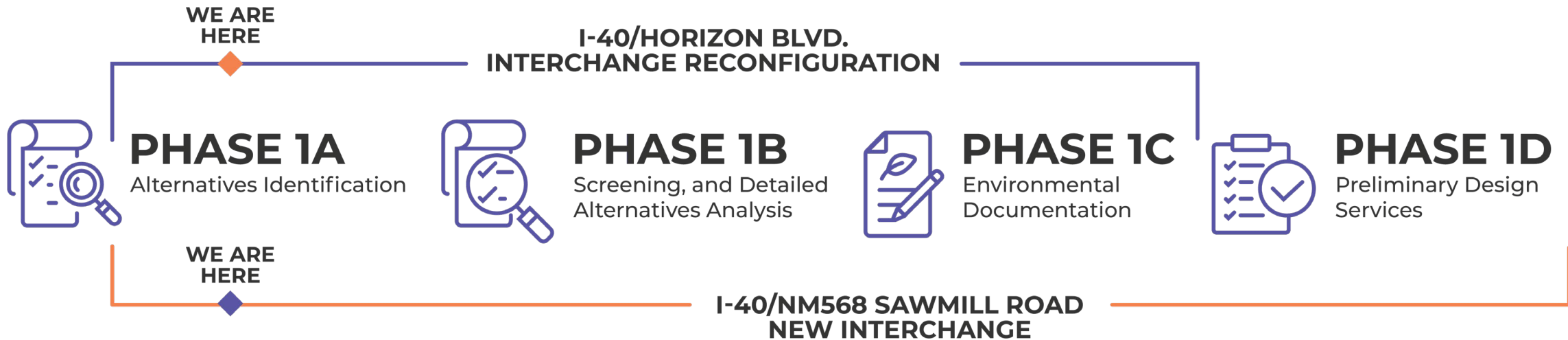


# Study Areas





# Study Phasing



Studies will follow the NMDOT Location Study Procedures Guidebook (Updated 2015)



# Phase 1A

- ◆ Identify existing conditions
- ◆ Establish study Purpose and Need
- ◆ Identify preliminary design alternatives
- ◆ Complete initial screening of preliminary design alternatives

Studies will follow the NMDOT Location Study Procedures Guidebook (Updated 2015)



New Mexico DEPARTMENT OF  
**TRANSPORTATION**  
MOBILITY FOR EVERYONE



**I-40** HORIZON BOULEVARD & SAWMILL ROAD STUDIES

CN 6101770 | CN 6101780



# Phase 1B

- ◆ Complete detailed evaluation of design alternatives and screening
- ◆ Identify draft Preferred Design Alternative
- ◆ Complete engineering refinements of Preferred Design Alternative
- ◆ Develop Design Alternatives Analysis Report

Studies will follow the NMDOT Location Study Procedures Guidebook (Updated 2015)



New Mexico DEPARTMENT OF  
**TRANSPORTATION**  
MOBILITY FOR EVERYONE



**I-40** HORIZON BOULEVARD & SAWMILL ROAD STUDIES

CN 6101770 | CN 6101780

# Phase 1C

- ◆ Complete investigation and analyses
- ◆ Prepare resource reports and complete agency consultations
- ◆ Prepare Environmental Document

Studies will follow the NMDOT Location Study Procedures Guidebook (Updated 2015)



New Mexico DEPARTMENT OF  
**TRANSPORTATION**  
MOBILITY FOR EVERYONE



**I-40** HORIZON BOULEVARD & SAWMILL ROAD STUDIES

CN 6101770 | CN 6101780



Phase  
1D



Complete preliminary 30%  
Design

Studies will follow the NMDOT Location Study Procedures Guidebook (Updated 2015)



New Mexico DEPARTMENT OF  
**TRANSPORTATION**  
MOBILITY FOR EVERYONE



**I-40** HORIZON BOULEVARD & SAWMILL ROAD STUDIES

CN 6101770 | CN 6101780



# Study Existing Elements to Consider



New Mexico DEPARTMENT OF  
**TRANSPORTATION**  
MOBILITY FOR EVERYONE



**I-40** HORIZON BOULEVARD & SAWMILL ROAD STUDIES

CN 6101770 | CN 6101780



# Existing Conditions

---

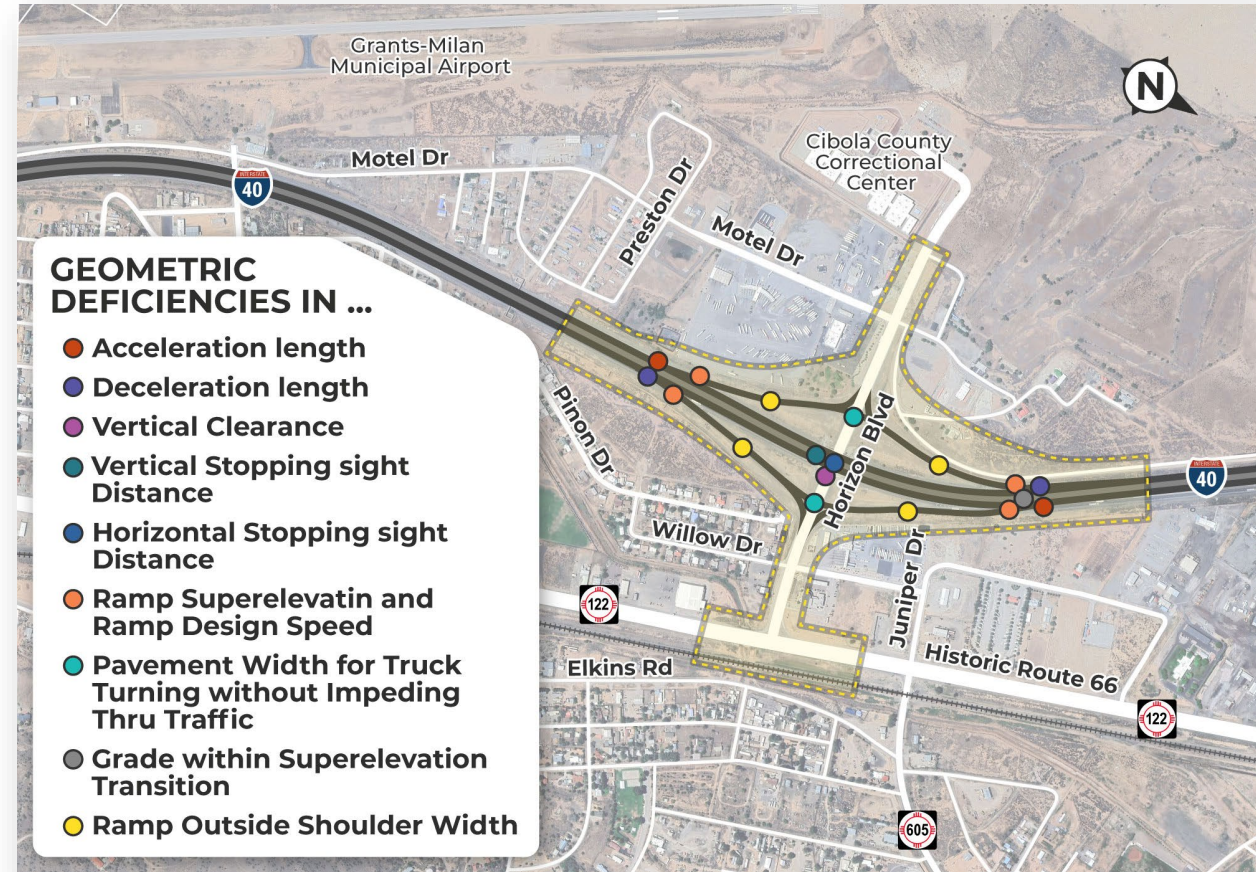
- » Geometric Deficiencies
- » Traffic Operations
- » Safety
- » Drainage
- » Environmental Conditions



# Roadway Conditions

## Geometric Deficiencies

- » Existing Conditions
  - » Currently a compressed diamond interchange
  - » No pedestrian facilities
  - » Stop controlled intersection
  - » Poor lighting

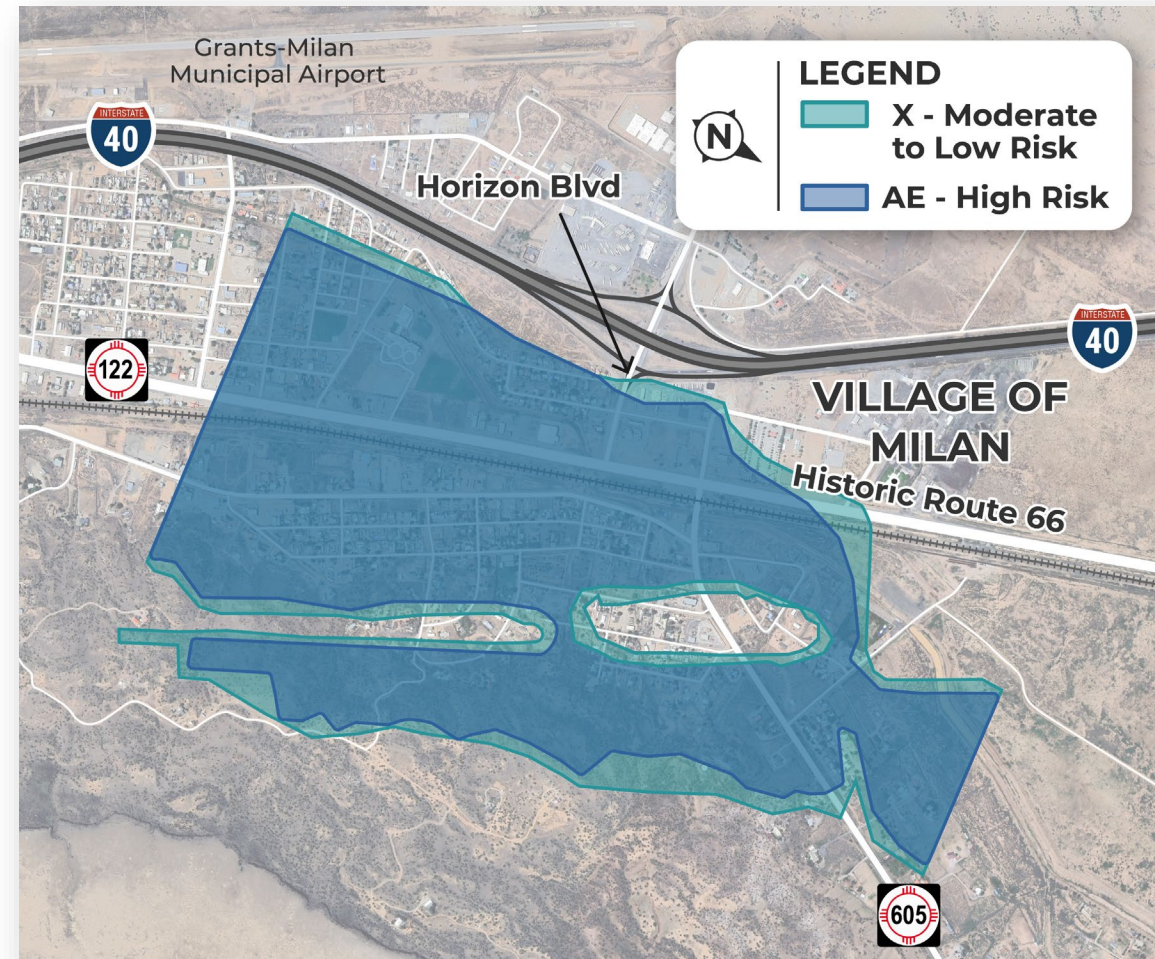




# Drainage Conditions

No major drainage facilities collecting and conveying off-site flows.

## FEMA Flood Zone



# Bridge Conditions

- » Horizon Blvd. 3-span bridges were retrofitted in 2017
  - » The deck, superstructure, and substructure are in good condition
- » Sawmill Rd. 2-span bridge
  - » The deck and substructure are in satisfactory condition, and the superstructure is in fair condition

## Bridge Locations





# Environmental Conditions

---

## I-40 Horizon Boulevard Study

- » No Critical Habitat within the study area
- » No wetlands or water quality concerns
- » Several petroleum storage tanks within the study area

## I-40 Sawmill Road Study

- » Two archaeological sites
- » No Critical Habitat within the study area
- » No wetlands or water quality concerns
- » At least one petroleum storage tank within the study area





# Traffic Conditions



## Existing

- » Existing traffic operations are acceptable
- » Deficient operations at I-40 merge/diverge points (too short)
- » Complicated by % of heavy vehicles

## The Future



- » Projecting to 2044
- » County is anticipating 1.8% annual growth
- » I-40 Corridor Study indicates I-40 capacity constraints
- » Future Development: Milan Industrial Park

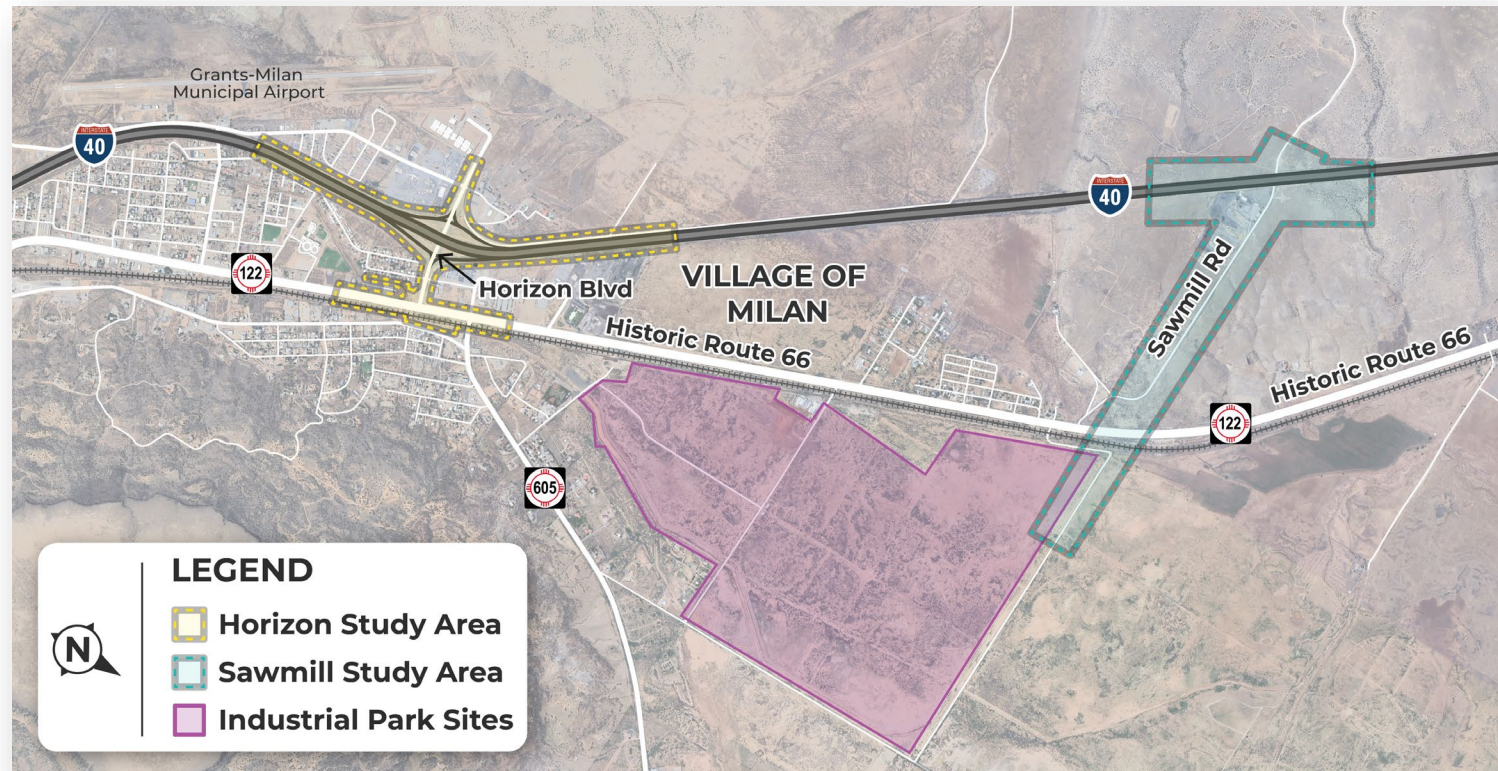


New Mexico DEPARTMENT OF  
**TRANSPORTATION**  
MOBILITY FOR EVERYONE



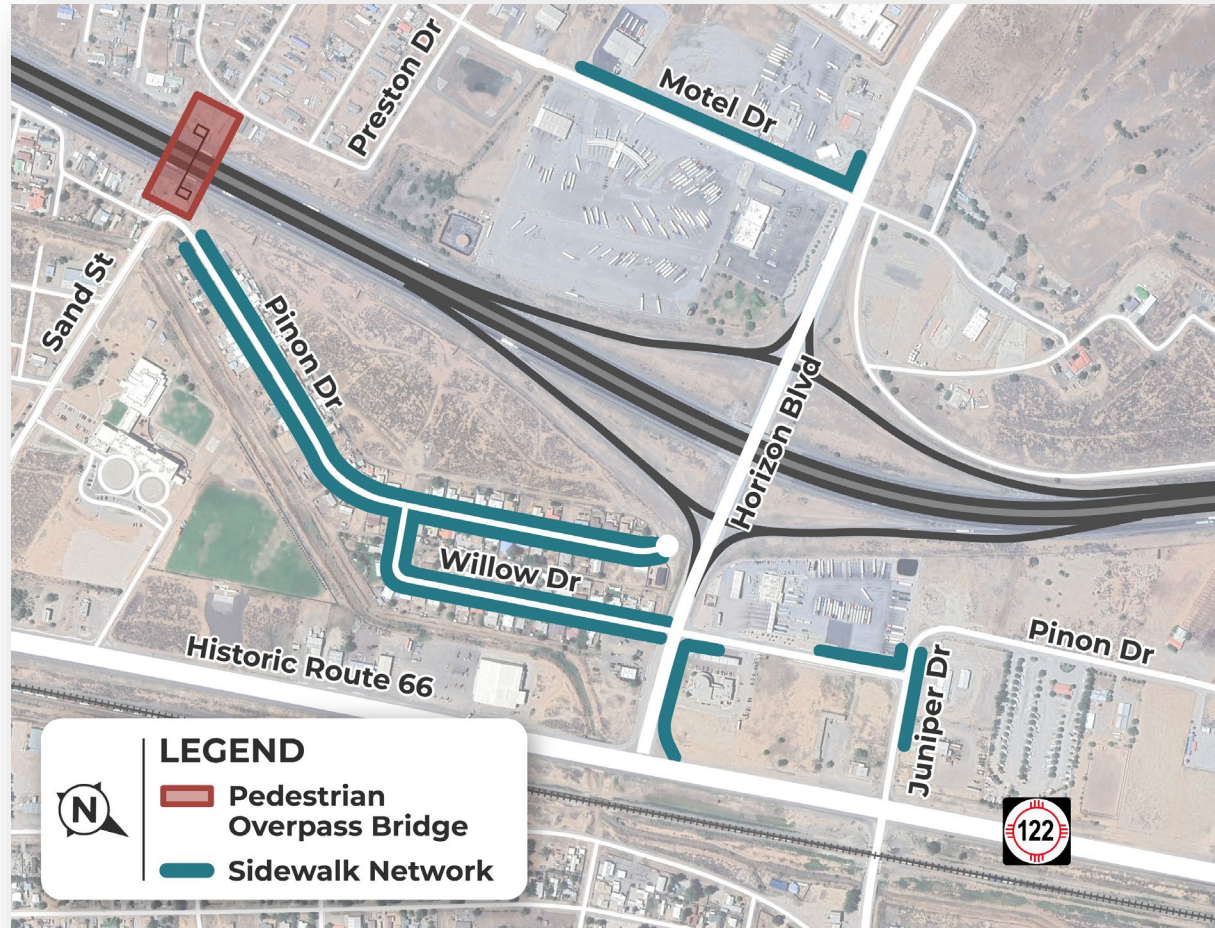
# Milan Industrial Park

- » 913-acre site
  - » Master Plan 2020
  - » Driven by private development
  - » Roadway and rail access
- » Will drive traffic growth at the existing I-40 Horizon Boulevard interchange





# Nonmotorized Traffic



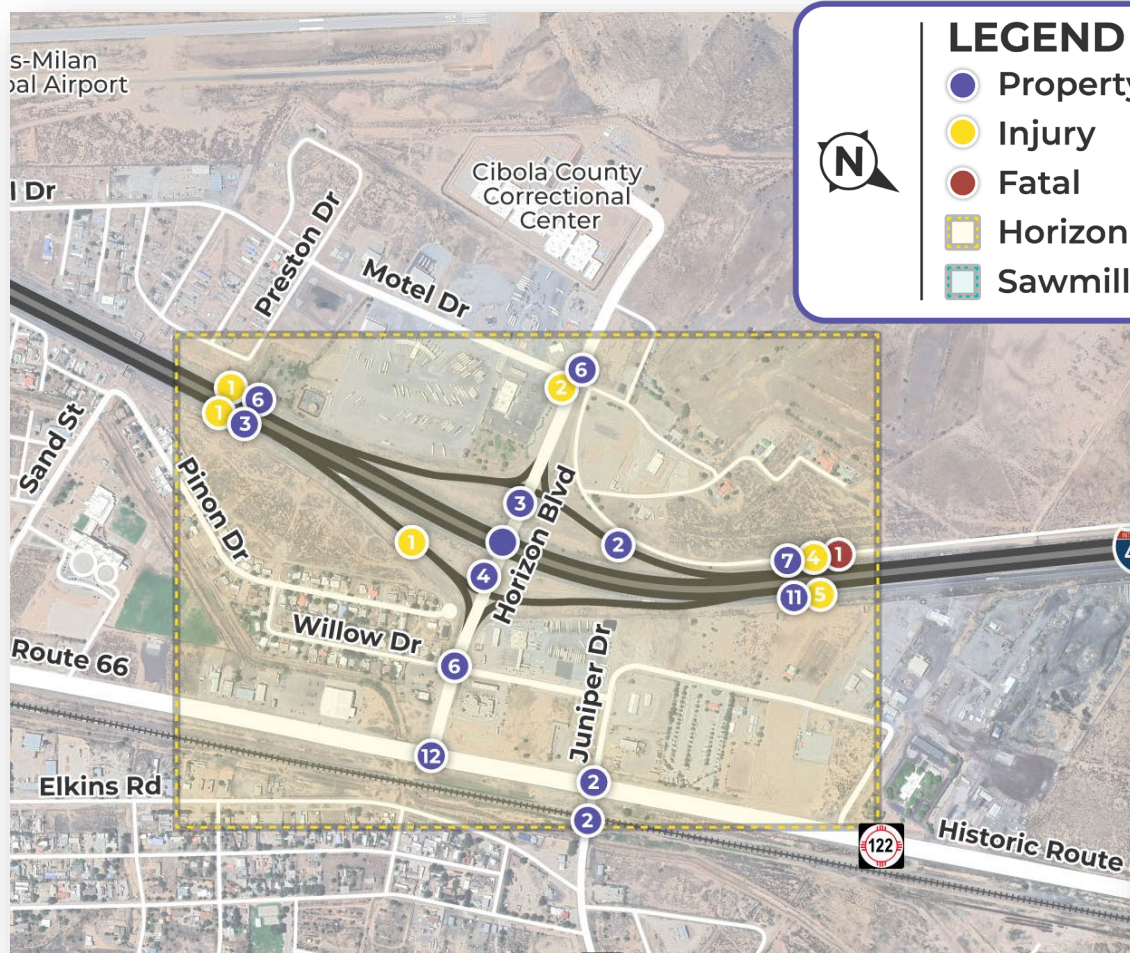
## Sidewalk Network

- » Sparsely connected pedestrian route
- » Currently, there is a pedestrian overpass in alignment with Sand Street, providing a connection between the Milan Elementary School area and residences west of I-40

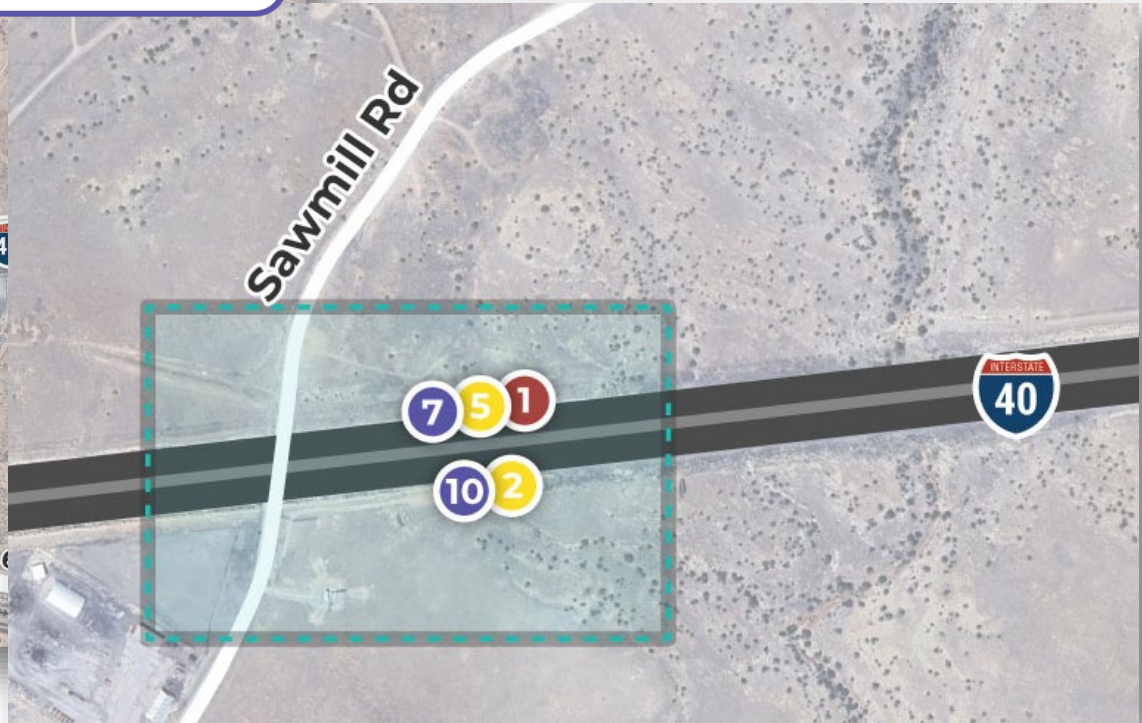




# Crash History



2018–2022



New Mexico DEPARTMENT OF  
TRANSPORTATION  
MOBILITY FOR EVERYONE



I-40 HORIZON BOULEVARD & SAWMILL ROAD STUDIES

CN 6101770 | CN 6101780





# Next Steps



New Mexico DEPARTMENT OF  
**TRANSPORTATION**  
MOBILITY FOR EVERYONE

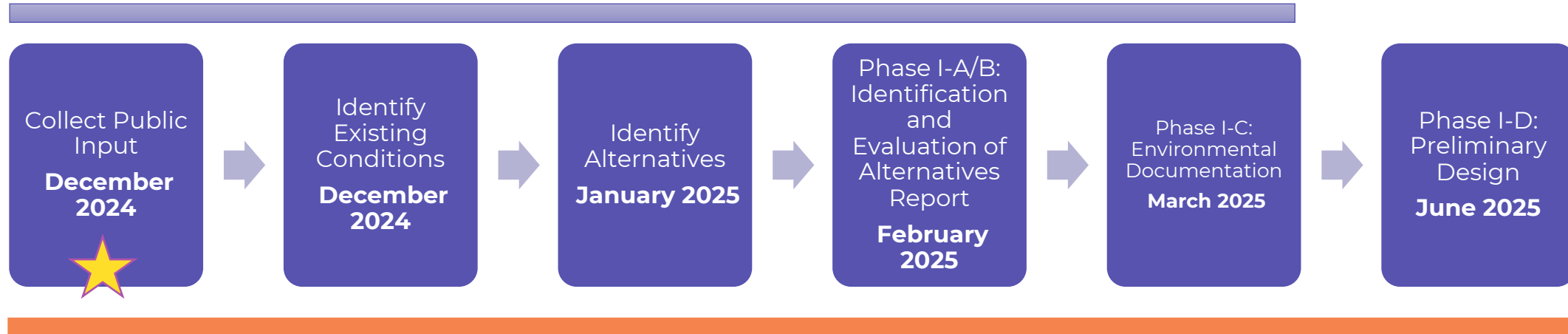


**I-40** HORIZON BOULEVARD & SAWMILL ROAD STUDIES

CN 6101770 | CN 6101780

# Where Do We Go From Here?

## I-40/Horizon Blvd Interchange Reconfiguration



## I-40/NM568 Sawmill Road New Interchange



New Mexico DEPARTMENT OF  
**TRANSPORTATION**  
MOBILITY FOR EVERYONE



**I-40** HORIZON BOULEVARD & SAWMILL ROAD STUDIES

CN 6101770 | CN 6101780





# Public Engagement



New Mexico DEPARTMENT OF  
**TRANSPORTATION**  
MOBILITY FOR EVERYONE



**I-40** HORIZON BOULEVARD & SAWMILL ROAD STUDIES

CN 6101770 | CN 6101780

# How to Submit a Public Comment

**Comment period is open through Dec. 13, 2024**



Submit live at the public meeting during the Q&A or in a comment form



Email **info@i40villageofmilan.com**



Call the hotline at **505-209-3999**



Mail a comment form to:

**Horizon Boulevard & Sawmill Road Studies  
6001 Indian School Road NE, Suite 250  
Albuquerque, NM 87110**



# Q&A Guidelines

---

- ◆ Keep questions to **2 minutes**
- ◆ **Be respectful** of the attendee asking the question and of the team answering it





# I-40

HORIZON BOULEVARD  
& SAWMILL ROAD  
STUDIES



*New Mexico* DEPARTMENT OF  
**TRANSPORTATION**  
MOBILITY FOR EVERYONE



CN 6101770

CN 6101780

**Hotline: 505-209-3999**

**Email: [info@i40villageofmilan.com](mailto:info@i40villageofmilan.com)**

**Website: [villageofmilan.com](http://villageofmilan.com)**

# Thank you!

# HOW TO SUBMIT A PUBLIC COMMENT

Comment period is open through Dec. 13, 2024



Submit live at the public meeting during the Q&A or in a comment form



Email [info@i40villageofmilan.com](mailto:info@i40villageofmilan.com)



Call the hotline at **505-209-3999**



Mail a comment form to:

**Horizon Boulevard & Sawmill Road Studies**  
**6001 Indian School Road NE, Suite 250**  
**Albuquerque, NM 87110**

