

 **TREE PLANTING REGULATIONS:** guidelines exist to plant a tree within the City limits (boulevard area) and for planting a tree under and near utilities.

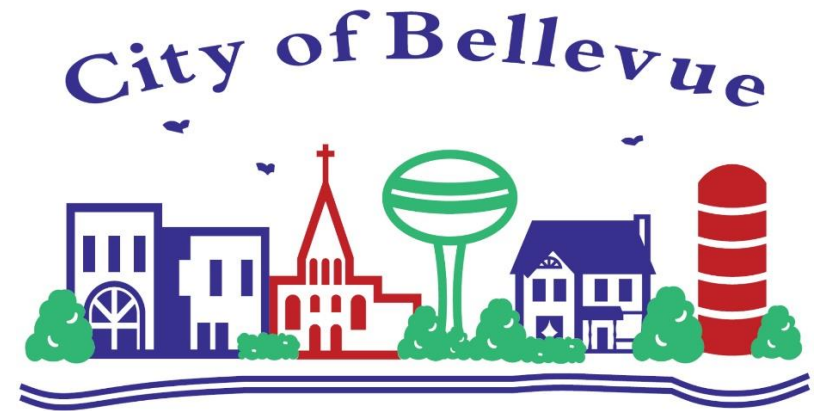
 **TREE PERMITS:** required for all trees planted in the City right-of-way/boulevard area.

 **TREE REBATE PROGRAM:** reimbursement available for trees planted to improve energy efficiency.

 Plant in the Spring (March-May) or Fall (September-October) for best results and watering is very critical the first couple years.

 **CALL 811:** before you dig!

 Help is available for recommendations on what types of trees to plant by the City's Tree Board.

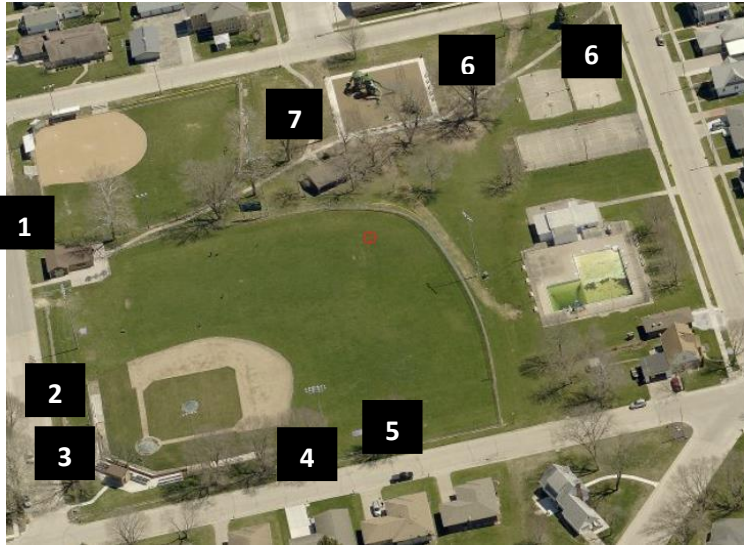


TREES

*A reference guide for
tree varieties planted in City Parks
and regulations & tips when planting.*

City Hall, Clerk's Office
106 N. Third Street
563-872-4456

COLE PARK



1. Burgundy Belle Maple

Planted: 04/2020



2. Tulip Tree

Planted: 04/2020



3. Sienna Glen Red Sunset

Planted: 04/2020



4. Red Sunset Maple

Planted: 04/2020



RIVERVIEW PARK – North 400 block



5. Skline Locust

Planted: 04/2020



6. Sycamores

Planted: 2019 & 04/2020



7. Red Oaks

Planted: 2019



8. Yellowwood

Planted: 05/2020



9. Sweet Birch

Planted: 05/2020

10. Tricolor European Beech Tree

Planted: Fall 2019



FELDERMAN PARK

