

# Chapter 5: Recreation Inventory

The residents of the City of Berkley are able to take advantage of a variety of recreational resources at the local level, as well as at the county and state levels. There are nine city parks and several schools within the city boundaries; one of the facilities is jointly run by the school district and the parks department while two others are owned and operated by the schools. Several private, county, and state-owned recreation facilities are also located in or near the City of Berkley.

The National Recreation and Park Association (NRPA) categorizes parks by size and function and offers four general park types: Neighborhood, Community, Regional, and Special Use Areas. Communities would not typically have instances of each type of park; Berkley, for example, does not contain a regional park or any special use areas, and neither recreational facility would be appropriate in such a densely populated area.

This section describes the recreational opportunities available to Berkley residents. The information contained in the following pages was compiled from community recreation plans, websites, aerial photographs and a field survey.

Map 2. Berkley Existing Recreation Facilities



Table 12. NRPA Parkland Classification and Standards

Type	Service Area	Desirable Size	Acres per 1000 residents	Desirable Site Characteristics & Amenities
Neighborhood Park	1/4 to 1/2 mile	5-15 acres	1 to 2 acres	Serve the surrounding neighborhoods with open space and facilities such as basketball courts, children's play equipment and picnic tables. Examples: All Berkley parks except Community & Merchants/Oxford Parks.
Community Park	1-2 miles	25+ acres	5 to 8 acres	May include areas suited for intense recreation facilities such as athletic complexes and large swimming pools. Easily accessible to nearby neighborhoods and other neighborhoods. Example: Community & Merchants/Oxford Parks
Regional Park	Several communities	200+ acres	5 to 10 acres	Contiguous with or encompassing natural resources. Examples: Catalpa Oaks, Red Oaks Nature Center, Lake St. Clair Metropark, Huron Meadows Metropark
Special Use Areas	No applicable standards	Variable depending on use	Variable	Examples: Detroit Zoo, Rackham Golf Course, Red Run Golf Club

Table 13. Local Park Amenities

		Neighborhood / Mini Park							Community Park	
		Angell Park - 5.7 acres total area, 3.8 acres parkland	Jaycee Park - 2.7 acres	Kiwanis Tot Lot - 0.8 acres	Lazenby Field - 2.3 acres	Friends Park - 0.95 acres	Pattengill Playground - 4.1 ac total, 2.3 acres parkland	Rogers Park - 5.4 acres total, 2.55 acres parkland	Community Park - 17.69 incl. stadium, 13.1 acres parkland	Merchants/Oxford Park - 7.6 acres
Access	Parking Area	•	•	street	•	•	street	•	•	•
	Handicap Access	•	•	•	•	•	•	•	•	•
Passive Use	Play Equipment	•	•	•			•	•	•	•
	Picnic Tables		•	•						•
	Pavilion		•					•	•	
	Grills		•							
	Restrooms								P	P
Court / Turf Games	Baseball/Softball	•			•		•		•	•
	Tennis Courts	•				•			•	
	Basketball Courts	•					•	•		
	Soccer Fields*									•
	Football Field*									•
	Stadium / Track								•	
Misc	Community Center								•	
	Splash Pad / Water Park									*

\*Note: Soccer and football are accommodated by an active field area at Merchants/Oxford Park. The Parks & Recreation Department does not currently operate any fields dedicated exclusively to either of those sports.

NEIGHBORHOOD PARKS

ANGELL PARK:

Angell Park sits immediately south of Angell Elementary School in the west-central portion of Berkley. The land is leased from the School District, and the City provides and maintains all recreation amenities. The park is used by school children during recess, and by the community at other times. The 5.68 acre school facility contains 3.82 acres of parkland; the park space includes one baseball field with bench dugouts, two tennis courts, three swings, basketball court, climbing and play structures and picnic facilities. The play equipment at this park is accessible from the parking area and school building, and the play structures are barrier free. The perimeter of the park is defined with a sidewalk, but the interior park elements are not connected with an accessible path system. The bleachers could also incorporate a concrete pad for standing wheelchairs.

New play equipment and drainage improvements have been installed since completion of the previous plan.

Figure 1. Angell Park



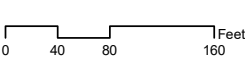
Angell Park

City of Berkley, Michigan

Source: Oakland County GIS

May 2020

Carlisle/Wortman Associates, Inc.  
Ann Arbor, Michigan



EXISTING AMENITIES

- A: Baseball field with bench and dugouts
- B: Tennis courts
- C: Swings
- D: Basketball Court
- E: Climbing and play structures
- F: Picnic facilities



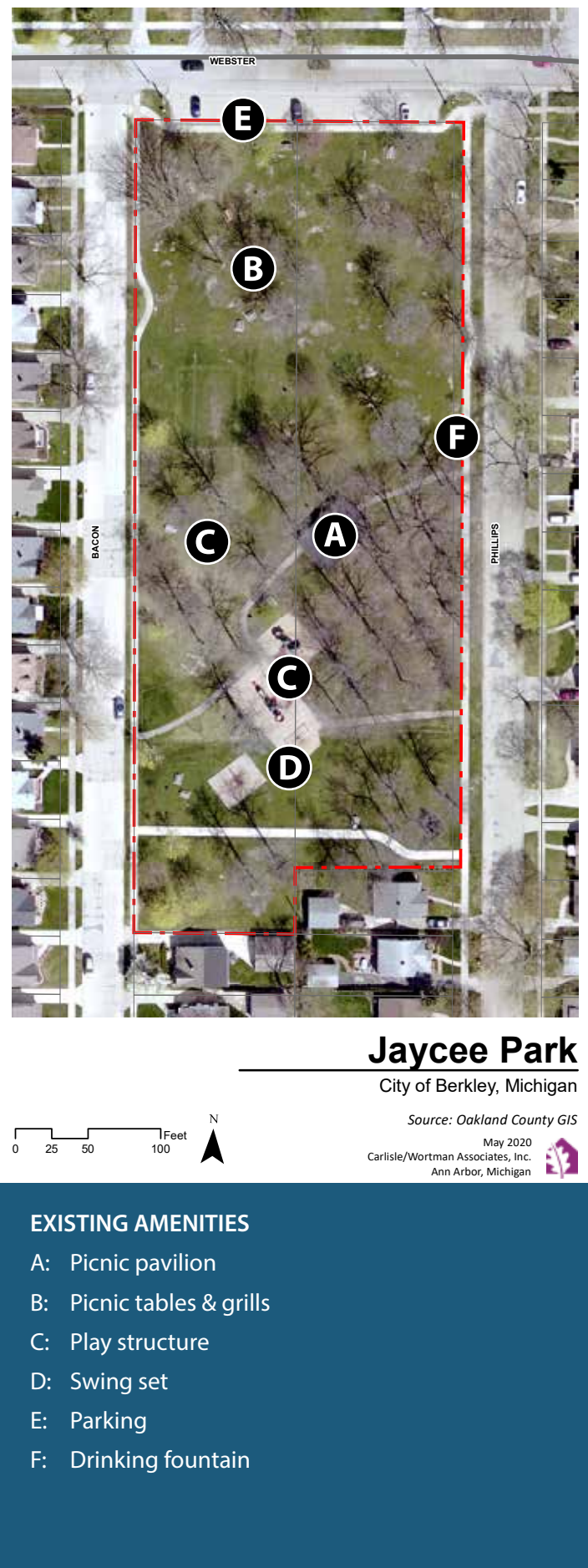




JAYCEE PARK:

This 2.71 acre park serves the northern part of the city, providing a large, partially wooded setting for picnics and large group gatherings. The park is unique in the city due to its wooded nature; it is the closest Berkley has to a nature area. The park includes a large pavilion, with picnic tables and in-ground grills. It also has two large play structures, a swing set, and other climbing and play equipment. The park facilities are accessible to wheelchair users, including accessible parking, sidewalks around the perimeter and through the park, accessible picnic tables, and accessible matting to barrier free play structures.

Figure 2. Jaycee Park





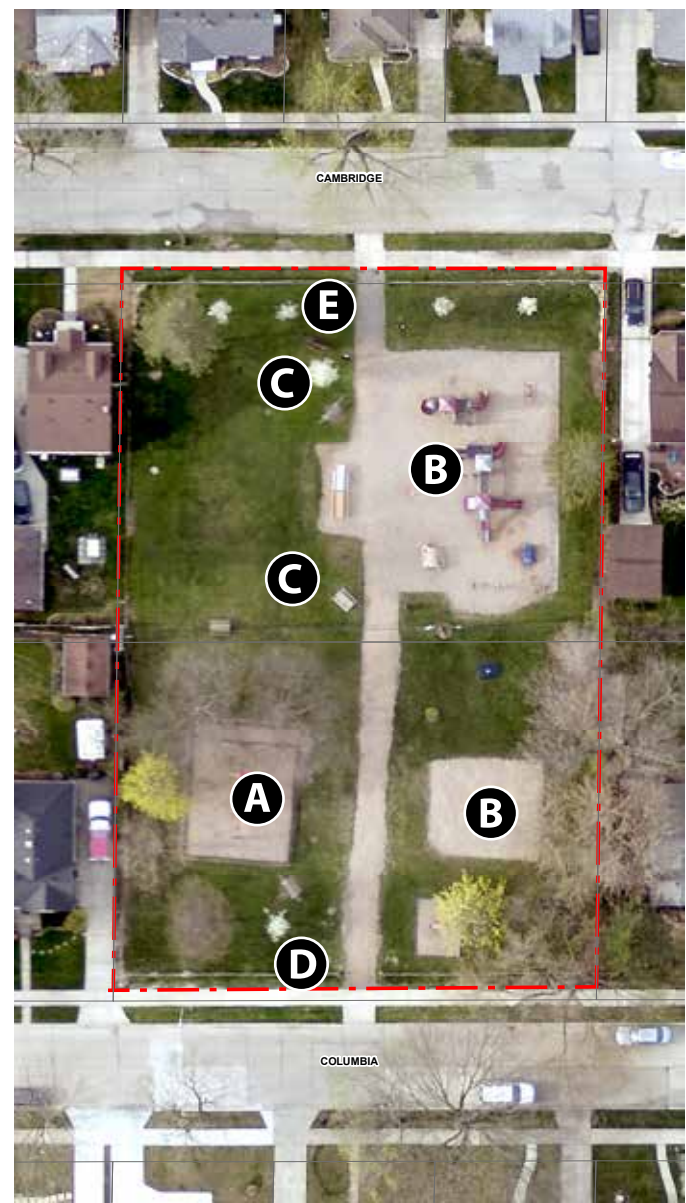




**KIWANIS TOT LOT:**

Located in the southeast part of the City, this small (0.77 acres) park serves neighborhood children via a number of play structures, including swings, large play structure, spring teeter-totter, merry-go-round, and other pieces. Much of the out-dated equipment has been replaced in recent years, although some older pieces still remain in the park. The park also offers several picnic tables and a drinking fountain. The surface around the play structures and swings and through the center of the park is covered with engineered wood fiber, allowing wheelchair access to most of the play equipment. Playground equipment upgrades are anticipated in spring of 2021.

**Figure 3.    Kiwanis Tot Lot**



**Kiwanis Tot Lot**

City of Berkley, Michigan

Source: *Oakland County GIS*

May 2020  
Carlisle/Wortman Associates, Inc.  
Ann Arbor, Michigan



**EXISTING AMENITIES**

- A: Swings
- B: Play and climbing structures
- C: Picnic tables
- D: Drinking fountain
- E: Little library







### LAZENBY FIELD / FRIENDS PARK / ROGERS PARK:

The park campus, totaling 8.91 acres, is connected by openings through shared fences. Lazenby Field consists of one 2.62 acre baseball field with bleachers. It is located directly next to Rogers Elementary School. While general access to the field and parking are barrier free, the bleachers and drinking fountain need to be improved with concrete pads for standing and accessibility to the fountain.

Friends Park (formerly Oxford Towers Park) is a small (0.85 acres) neighborhood park that contains two lit tennis courts, a sand box, and benches. A narrow asphalt pathway connects the amenities. The park's name was formally changed by City Council on October 20, 2020.

Rogers Park is owned and operated by the Berkley School District. The 5.44 acre school ground contains 2.55 acres of parkland, consisting of three climbing structures, five swing sets, two basketball half-courts, and multiple free standing structures. The fenced in playground is used by Rogers Elementary students during recess and by neighborhood children during off-hours. The equipment was recently upgraded and is in excellent condition.



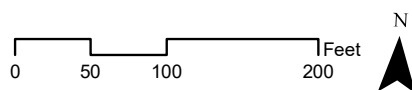


Figure 4. Lazenby Field, Friends, &amp; Rogers Park



## Lazenby Field, Friends, & Rogers Park

City of Berkley, Michigan



Source: Oakland County GIS

May 2020  
Carlisle/Wortman Associates, Inc.  
Ann Arbor, Michigan



### EXISTING AMENITIES

#### LAZENBY FIELD

- A: Baseball field with bench and dugouts
- B: Drinking fountain

#### FRIENDS PARK

- C: Tennis courts
- D: Benches
- E: Sand box

#### ROGERS PARK

- F: Play structures
- G: Swing sets
- H: Basketball (half court)
- I: Parking\*
- J: Multi-use field
- K: Picnic tables

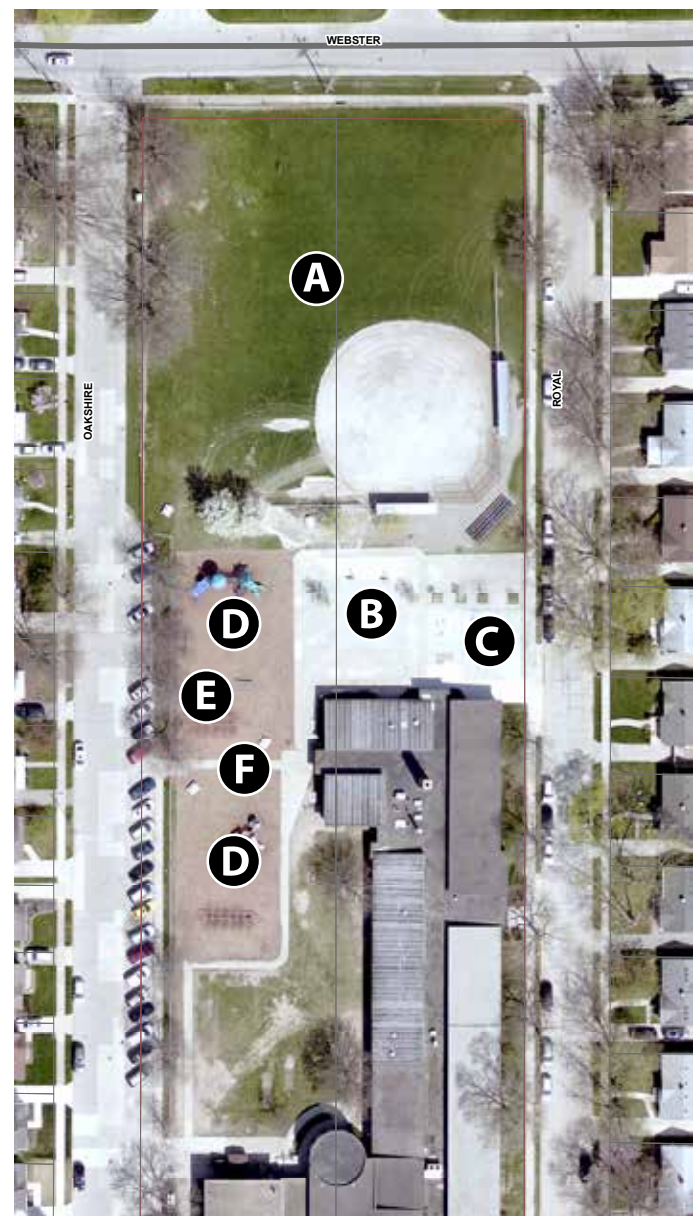
*\*Rogers Park parking lot available during non-school hours only*



**PATTENGILL PARK:**

Located on the north side of Berkley, Pattengill Park is also owned and operated by the Berkley School District. The 4.05 acre campus includes 2.31 acres of parkland, containing a number of amenities including a baseball field with backstop and bleachers, two basketball half-courts, a four square court, two climbing structures, two swing sets, benches and picnic tables, and several free-standing structures. The structures are relatively new, and include features specifically designed to accommodate wheelchair-bound users. Parking is provided both on-street and in the school parking lot. The park's proximity to the city border means that it is utilized by both Berkley residents and residents from the adjoining communities of Royal Oak and Beverly Hills during non-school hours. During school hours, the park is used exclusively by Pattengill Elementary students.

**Figure 5. Patengill Park**



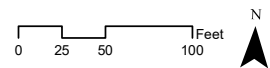
**Patengill Park**

City of Berkley, Michigan

Source: Oakland County GIS

May 2020

Carlisle/Wortman Associates, Inc.  
Ann Arbor, Michigan



**EXISTING AMENITIES**

- A: Baseball field with dugouts and bleachers
- B: Basketball (half courts)
- C: Four-square court
- D: Climbing structures
- E: Swings
- F: Picnic tables







## COMMUNITY PARKS

### COMMUNITY PARK:

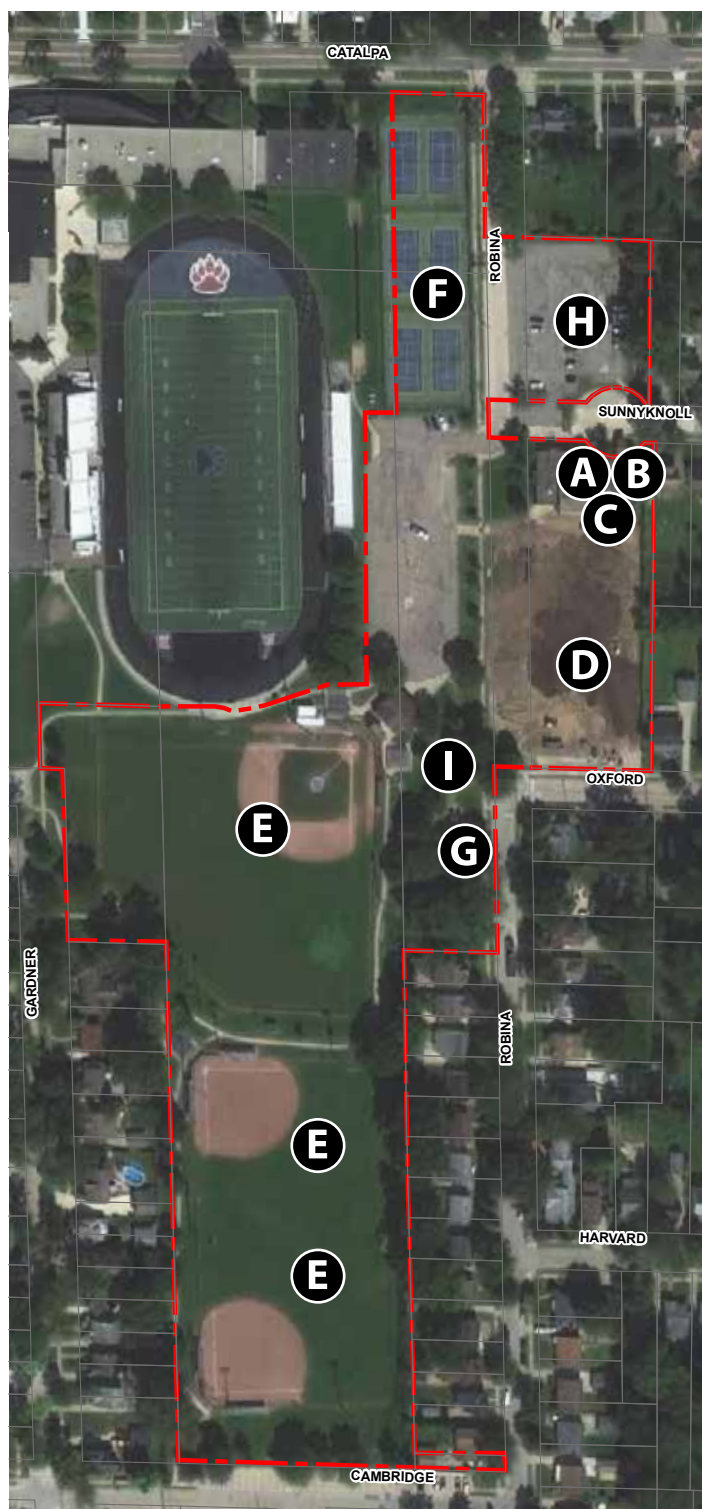
Community Park is adjacent to Anderson Middle School, and is located in the south central part of Berkley. This 13.13-acre park contains the Community Center, Recreation Department offices, baseball fields, tennis courts, and play equipment. The school tennis teams use the tennis courts for practices and games. An ice arena and horseshoe pits were removed in 2018.

These recreation amenities combine with the recreation facilities at the Middle School to create a central recreation hub for the community. The buildings on this property are accessible for wheelchair use. However, improvements to the restrooms need to be made. Most amenities are accessible by wheelchair, as there is a concrete pathway system through the park, connecting the school, park, and sidewalks along all the adjacent roads. Upgrades to play equipment is scheduled for late 2021 into spring of 2022.

#### EXISTING AMENITIES

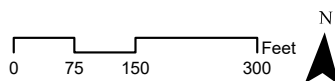
- A: Community Center
- B: Senior Center
- C: Recreation Department
- D: Ice Arena & horseshoe pits, removed in 2018
- E: Baseball fields with dugouts and bleachers
- F: Tennis courts
- G: Play structures and climbing equipment
- H: Parking
- I: Concession stand & restrooms

Figure 6. Community Park



## Community Park

City of Berkley, Michigan



Source: Oakland County GIS

May 2020  
Carlisle/Wortman Associates, Inc.  
Ann Arbor, Michigan









## MERCHANTS / OXFORD PARK:

This 7.5-acre park is located in the southwest corner of the City. This land was acquired from the Berkley Public Schools In the 2014-15 fiscal school year. Prior to acquisition, the school district sold approximately 1.7 acres of this park for residential development. The existing Oxford Center, which housed the Board of Education offices, was also demolished prior to the sale.

The city approved a major overhaul of the park in the summer of 2020 which will allow the addition of permanent bathrooms, a splash pad, and new play equipment. Two baseball fields will be retained, as will two open fields used for soccer and football. Trails throughout the park and other new amenities are all designed to be ADA compliant.

### AVAILABLE AMENITIES (UPON COMPLETION)

- A: Permanent restrooms
- B: Splash pad
- C: Walking paths
- D: Baseball fields with dugouts and bleachers
- E: Active lawn area
- F: Passive lawn area



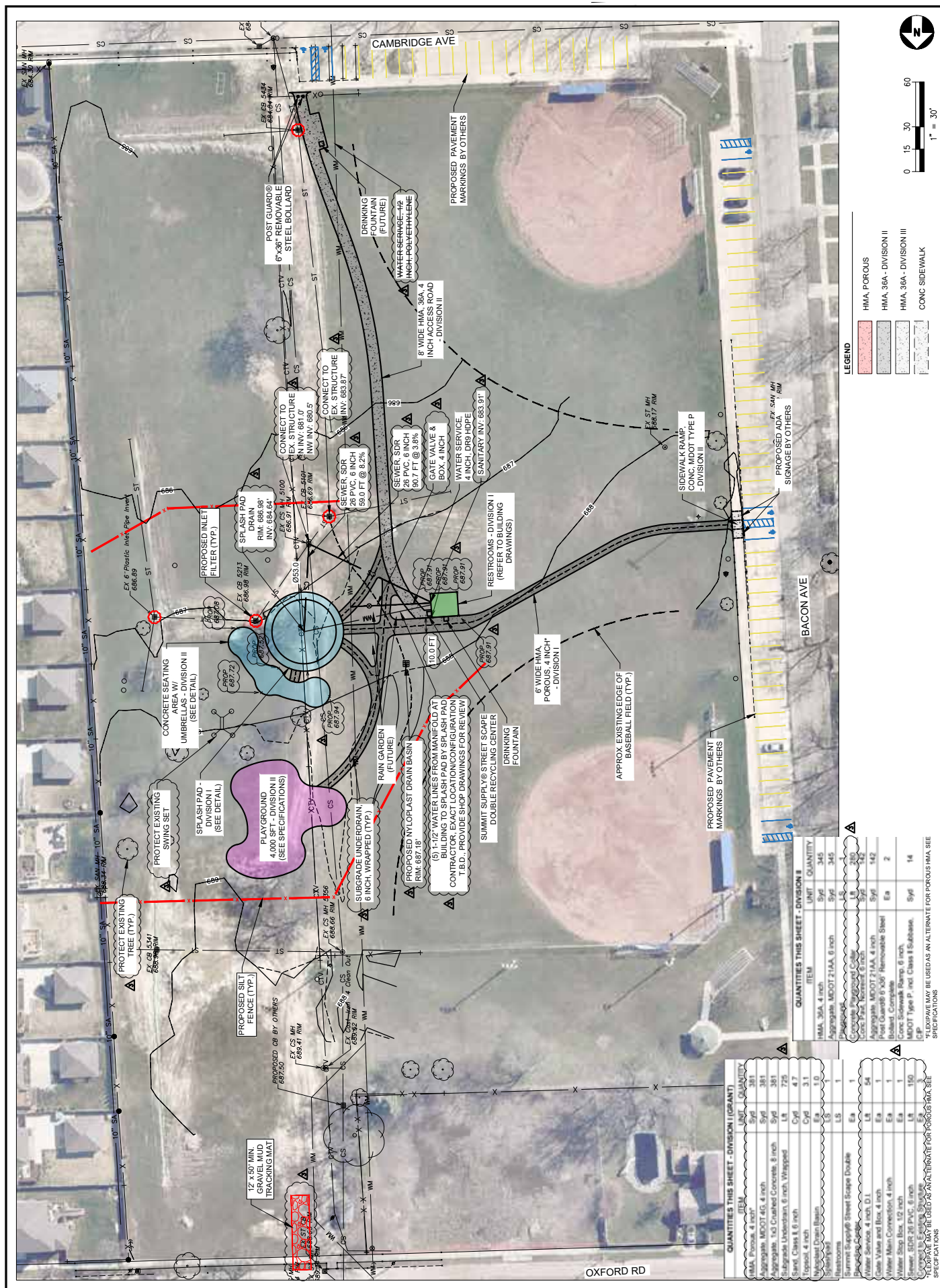
SPLASHPAD®  
VIEW 2

OXFORD PARK SPLASHPAD, MI  
Version C - 33110





**43 - RECREATION INVENTORY - City of Berkley 2021 - 2025 Parks & Recreation Master Plan**





## School Facilities

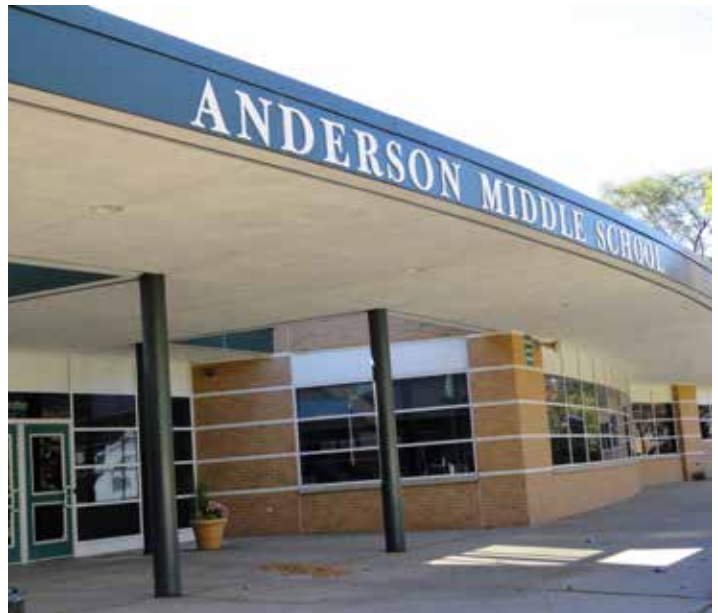
As previously discussed, the Berkley School District and the City of Berkley has a joint operating agreement for Angell Park, while the playgrounds at Rogers and Pattengill are owned and operated by the school district. All three playgrounds operate as school playgrounds during school hours, and are used as park space the remainder of the time.

Additional athletic and cultural facilities are present at Anderson Middle School and Berkley High School. The football field and track at Anderson, and gymnasiums, classrooms, and auditoriums are available for rental to the public on a limited basis. The swimming pool at Berkley High School is not available for private use, although residents are encouraged to use the pool during open swim sessions monitored by the Community Education Department. All rentals are subject to custodial fees, and availability is prioritized based on school district policies.

## Roseland Memorial Park Cemetery

Roseland Park Cemetery, founded in 1906, is located in the northeast corner of the City, bounded by Webster St., Coolidge, Twelve Mile, and Woodward Avenue. It is 133 acres in size, and provides this part of Berkley with a large open space with a park-like setting. It is a sanctuary for a wide variety of birds and wildlife.

The cemetery has been mentioned as a location for a possible Veteran's Park. A proposed linear park would run along the western edge of the property, continuing to Beaumont Hospital in Royal Oak. Residents have also expressed interest in providing new pedestrian access points along the western boundary.

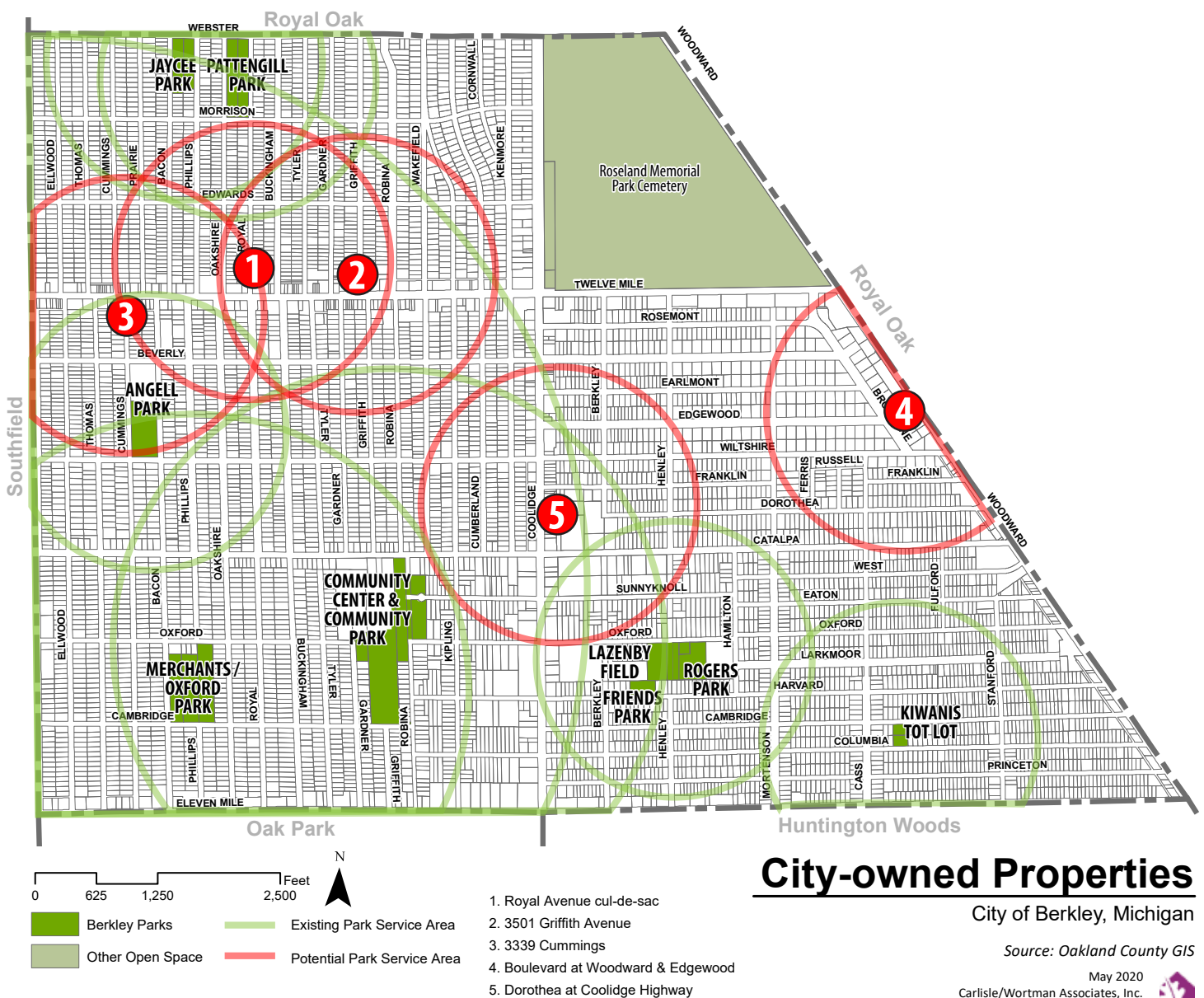




## City-owned Properties

The City owns a number of parcels around the community which could potentially be used for future pocket park development. The boulevard area at Woodward & Edgewood, in particular, presents an opportunity to fill a gap in recreation services for the community. A map of city-owned properties and their potential service areas is provided below.

Map 3. City-owned Properties





## Private Recreation Facilities

A large number of private recreation facilities can also be found in Berkley and nearby communities. They include:

### ARCHERY & SHOOTING RANGES

- MJC Archery (Royal Oak)
- Rising Phoenix Archery (Troy)
- Double Action Indoor Shooting Range (Madison Heights)
- Kummooyeh Michigan (Southfield)

### BOWLING

- Hartfield Lanes Family Fun Center
- Bowlero Lanes and Lounge (Royal Oak)

### DANCE

- Linda's Dance Works
- Arthur Murray Dance Studio (Royal Oak)
- Royal Oak Dance Academy (Royal Oak)
- Borgo Sisters School of Dance (Royal Oak)
- Beverli Varner School of Dance (Royal Oak)
- Fem Fatale Dance Studio (Oak Park)
- La Shelle School of Dance (Oak Park)
- Russian Ballet Academy of Michigan (Lathrup Village)

### FITNESS CENTER

- Anytime Fitness
- Bad Boy Boxing Gym, Inc.
- Fit Body Boot Camp
- Disrupt Fitness
- Reforming Foundations Pilates
- RO Fitness
- TRV|FIT Berkley
- Fusion Fitness Studio
- Curves

### GOLF

- Rackham Golf Course (Huntington Woods)
- Evergreen Hills Golf Course (Southfield)
- Royal Oak Golf Course (Royal Oak)

### GYMNASTICS

- Troy Gymnastics (Troy)

### ICE SKATING / HOCKEY

- John Lindell Ice Arena (Royal Oak)
- Birmingham Ice Arena (Birmingham)

### KARATE / MARTIAL ARTS

- School of Martial Arts
- Tactical Weapons Training Center (Southfield)
- Shojin Judo (Southfield)
- Brazilian Jiu Jitsu Club of Michigan (Southfield)
- Southfield Martial Arts Institute (Southfield)
- Detroit Kung Fu Academy of Southfield

### SWIMMING

- South Oakland Family YMCA (Royal Oak)
- Bac Swim Club (Royal Oak)
- SafeSplash Swim School (Royal Oak)
- Villa Point Pool (Southfield)
- Country Knoll Pool (Southfield)
- Southfield Pool (Southfield)
- Huntington Woods Aquatic Club (Huntington Woods)
- Beverly Hills Athletic Club (Beverly Hills)

### YOGA

- House of Yoga
- Shanti Yoga
- Living Tradition Yoga (Royal Oak)
- A Touch of Grace (Huntington Woods)
- Detroit Yoga (Royal Oak)
- Namaste Yoga (Royal Oak)
- Citizen Yoga (Royal Oak)



## RECREATION PROGRAMS AND SERVICES

The City of Berkley offers outstanding youth and adult recreation programs, team and individual sports opportunities, and special events to City residents and non-residents. The following programs are offered by City of Berkley Parks & Recreation Department:

### YOUTH ACTIVITIES

- Summer Day Camps
- Vacation Camps
- Karate
- Hunter Safety
- Snowmobile Safety
- Parent-Tot Playgroup
- Jump-A-Rama Gymnastics
- Basketball Camp
- Youth and Teen Dance
- Babysitting/Home Alone Class
- Leisure Unlimited Classes
- Parents Night-Out
- Safety Classes
- Zumba Kids
- Pillo Polo
- Lego Classes
- Art Classes
- Lacrosse
- Guitar

### ADULT ACTIVITIES

- Pilates
- Yoga
- PiYo
- Zumba
- Dog Obedience
- Adult/Family Karate
- Hunter Safety
- Boater/ORV safety
- Photography
- CPR/AED/First Aid
- Art Classes
- Tai Chi
- Kickboxing
- Self Defense Classes

### SENIOR ACTIVITIES

- One on One Computer Classes
- Senior Outreach services
- Home chore program
- Loan closet (durable medical supplies)
- Chair Yoga
- Senior Exercise
- Wii Bowling
- Euchre and Pinochle Groups
- Mahjong
- Specialty Bingo games

### DAY TRIPS

- Casino Trips
- Lunch outings
- Theatre Trips (Meadowbrook Theatre & Downtown Theatres)
- Bocce Ball
- Detroit Symphony Orchestra
- Oakland County Parks
- Senior day at the Detroit Zoo
- Shopping trips
- Detroit Tigers Games
- Michigan State Fair

### SPECIAL COMMUNITY EVENTS

- Berkley Days
- Art Bash
- Berkley CruiseFest
- Woodward Dream Cruise
- Community Garage sale
- Fire Open House
- Lids for Kids
- Halloween BooFest
- Holiday Lights Parade
- Mother/Son Dance
- Daddy/Daughter Dance
- WinterFest
- SummerFest
- Outdoor Movie in the Park
- Berkley Street Art Fest
- Tale on the Trail





## REGIONAL RECREATION FACILITIES

In addition to the local recreation facilities, there are over 180 acres of county recreational facilities within five miles of the City of Berkley. The state and county park systems, and the Huron Clinton Metropolitan Authority Metroparks also provide more than 41,000 acres of parks within 40 miles of the City. These facilities are considered regional recreational facilities. They are large facilities that provide opportunities such as golfing, water parks, camping, nature study & hiking, and other activities which are typically beyond the ability of a local municipality to provide. “Map 4. Regional Recreation Facilities” on page 49 depicts the location of nearby regional parks, and a detailed description of the regional facilities located in adjacent Cities follows.

### Oakland County Parks

#### CATALPA OAKS COUNTY PARK

Located just west of the City of Berkley in Southfield, Catalpa Oaks includes 25 acres of parkland. Activities and facilities include:

- Six soccer fields
- One fast pitch softball field, with backstop and bleachers
- One high school baseball field, with backstop and bleachers
- One picnic pavilion, available for rent
- Playground structures

#### RED OAKS COUNTY PARK

This County Park is programmed for active play. Located just five miles from Berkley in Madison Heights, the primary features of this 163-acre park include:

- Water park, offering a wave-action pool, water slide, 990- foot long moving river ride, 68-feature children’s water playground, and spray & play water play area for toddlers
- Jerry Matthews-designed 9-hole executive golf course
- Youth soccer complex, with soccer fields, concession building with restrooms, meeting space, and playground
- 5.2-acre dog park, with three fenced enclosures and picnic shelter

### Huron-Clinton Metroparks (HCMA)

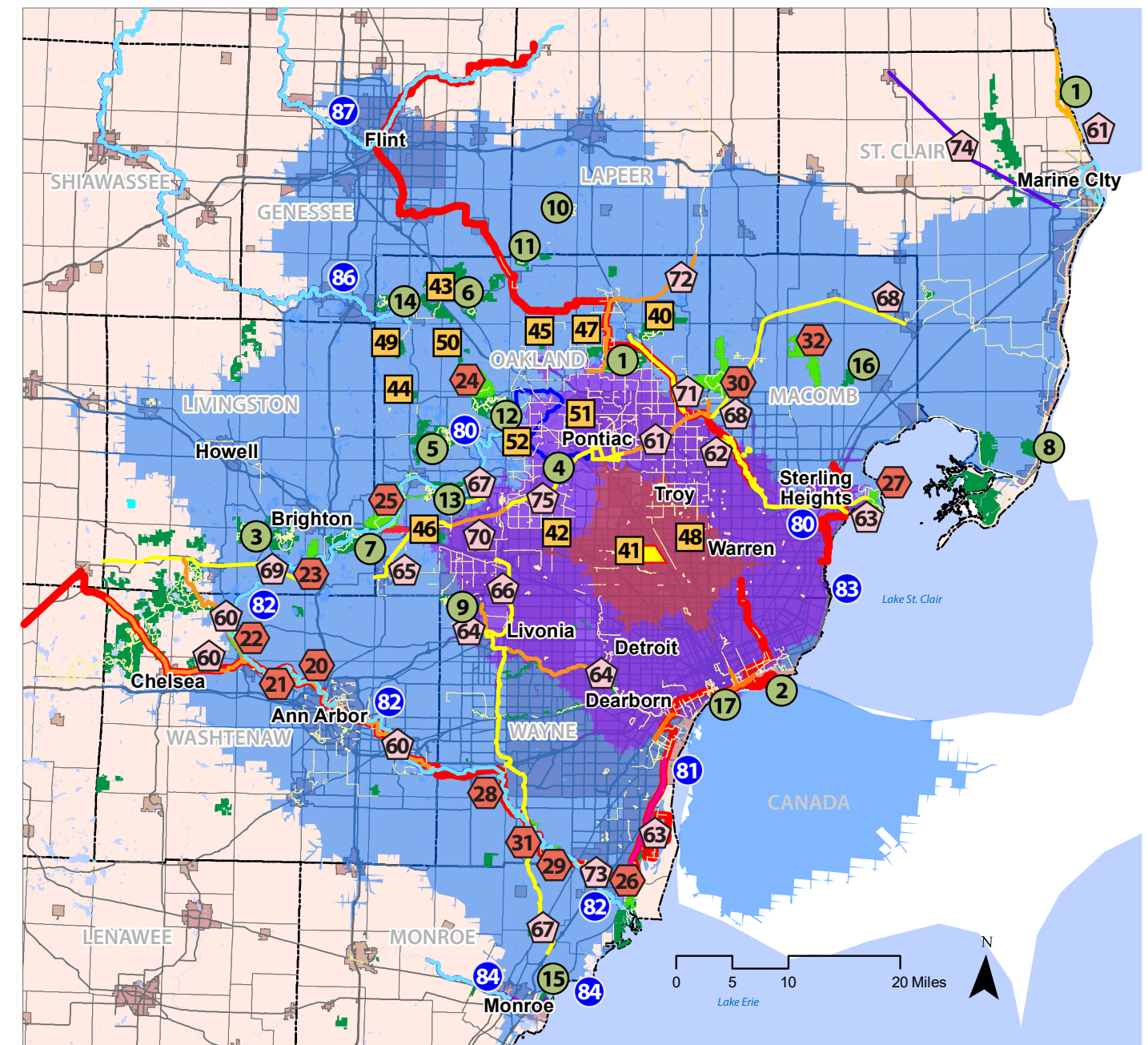
The Huron-Clinton Metroparks system is a regional park system spanning Oakland, Wayne, Macomb, Washtenaw, and Livingston counties. The Metroparks include of 13 parks covering 24,000 acres, with a wide variety of both active and passive uses and are especially noted for their extensive trail systems and golf courses. The Metroparks’ extensive natural areas provide a respite from the highly urbanized character of southeast Michigan.

Berkley is positioned almost exactly in the center of the Metropark system. The City is within 20 to 25 miles of each of the parks, meaning residents can be at most of the Metroparks can be accessed with a short half hour drive.

### Michigan State Parks

The State of Michigan maintains six state forests, four national parks and 97 state parks. Dodge Number 4 State Park, located roughly 12 miles northwest of the city, offers fishing, boating, and swimming activities. William G. Milliken State Park, located 14 miles southeast in Detroit, is Michigan’s first urban state park. Larger naturalized areas are located within a short drive of the city; Highland State and Pontiac Lake Recreation Areas are 22 miles northwest of Berkley.

Map 4. Regional Recreation Facilities



- |   |  |  |  |   |
|---|--|--|--|---|
| <p><b>X</b> State &amp; Federal Park/Rec Areas</p> <ol style="list-style-type: none"> <li>1. Bald Mountain Rec. Area</li> <li>2. Belle Isle State Park</li> <li>3. Brighton Rec. Area</li> <li>4. Dodge #4 State Park</li> <li>5. Highland Rec. Area</li> <li>6. Holly Rec. Area</li> <li>7. Island Lake Rec. Area</li> <li>8. Lakeport State Park</li> <li>9. Maybury Rec. Area</li> <li>10. Metamora-Hadley Rec. Area</li> <li>11. Ortonville Rec. Area</li> <li>12. Pontiac Lake Rec. Area</li> <li>13. Proud Lake Rec. Area</li> <li>14. Seven Lakes State Park</li> <li>15. Sterling State Park</li> <li>16. Wetzel State Recreation Area</li> <li>17. William G. Milliken State Park</li> </ol> | <p><b>X</b> Huron Clinton Metroparks</p> <ol style="list-style-type: none"> <li>20. Delhi</li> <li>21. Dexter-Huron</li> <li>22. Hudson-Mills</li> <li>23. Huron Meadows</li> <li>24. Indian Springs</li> <li>25. Kensington</li> <li>26. Lake Erie</li> <li>27. Lake St. Clair</li> <li>28. Lower Huron</li> <li>29. Oakwoods</li> <li>30. Stony Creek</li> <li>31. Willow</li> <li>32. Wolcott Mill</li> </ol> | <p><b>X</b> Oakland County Parks</p> <ol style="list-style-type: none"> <li>40. Addison Oaks</li> <li>41. Catalpa Oaks</li> <li>42. Glen Oaks Golf Course</li> <li>43. Groveland Oaks</li> <li>44. Highland Oaks</li> <li>45. Independence Oaks</li> <li>46. Lyon Oaks</li> <li>47. Orion Oaks</li> <li>48. Red Oaks Golf Course</li> <li>49. Rose Oaks</li> <li>50. Springfield Oaks Golf Course</li> <li>51. Waterford Oaks Water Park</li> <li>52. White Lake Oaks Golf Course</li> </ol> | <p><b>X</b> Major Trails</p> <ol style="list-style-type: none"> <li>60. Border-to-Border*</li> <li>61. Clinton River Trail*</li> <li>62. Downriver Linked Greenways*</li> <li>63. Freedom Metro Trail*</li> <li>64. Hines Park Trail</li> <li>65. Huron Valley Trail</li> <li>66. I-275 Metro Trail</li> <li>67. Lakes Community Trail</li> <li>68. Macomb Orchard Trail*</li> <li>69. M Levine Lakelands State Trail</li> <li>70. Michigan Airline Trail**</li> <li>71. Paint Creek Trail*</li> <li>72. Polly Ann Trail</li> <li>73. River Raisin Heritage Trail*</li> <li>74. Wadham's to Avoca Trail</li> <li>75. West Bloomfield Trail</li> </ol> <p>* = part of Iron Belle Trail<br/>** = in construction</p> | <p><b>X</b> Water Trails</p> <ol style="list-style-type: none"> <li>80. Clinton River</li> <li>81. Detroit Heritage River</li> <li>82. Huron River</li> <li>83. Lake St. Clair Coastal</li> <li>84. Monroe County / River Raisin / Lake Erie</li> <li>85. Rouge River</li> <li>86. Shiawassee River</li> <li>87. Flint River</li> </ol> |
|---|--|--|--|---|
- 15 minute drive  
 30 minute drive  
 60 minute drive  
 City of Berkley

# Regional Recreation Facilities

City of Berkley, Michigan

Source: Oakland County GIS  
Carlisle/Wortman Associates  
April 2020





**Table 14. Regional Recreation Facilities**

Key	AGENCY: HCMA = Huron Clinton Metroparks, MDNR = Michigan Department of Natural Resources, OC = Oakland County Parks & Rec	Property Name	Acres / Miles	ACTIVE SPORTS										PASSIVE ACTIVITIES													
				Baseball / Softball	Basketball	Disc Golf	Golf	Horseshoes/shuffleboard	Sand volleyball	Skate park	Soccer / multipurpose field	Tennis / pickleball	Cricket	Banquet / Special Events	Visitors Center / Nature Center / Museum	Comm. Center / Meeting space	Fairground / Major event space	Fitness Center / Gym / Exercise Equipment	Michigan State Park Explorer	Nature Programs	Geocaching	Metal Detecting	Dog Park / Trial Course	Pet Friendly Area	Playground	Picnic Area	Picnic Shelter
1	MDNR	Bald Mountain Rec. Area	4,637			•													•	•			•	•	•	•	
2	MDNR	Belle Isle State Park	982								•						•		•				•	•	•		•
3	MDNR	Brighton Rec. Area	4,947			•										•			•	•		•	•	•	•		•
4	MDNR	Dodge #4 State Park	139																		•	•	•	•			
5	MDNR	Highland Rec. Area	5,900										•							•	•			•	•	•	•
6	MDNR	Holly Rec. Area	8,000			•										•		•	•		•	•	•		•		
7	MDNR	Island Lake Rec. Area	4,000																		•		•				•
8	MDNR	Lakeport State Park	565													•			•			•	•	•			
9	MDNR	Maybury Rec. Area	1,000																			•	•	•			•
10	MDNR	Metamora-Hadley Rec. Area	723													•			•			•	•	•			
11	MDNR	Ortonville Rec. Area	5,340																	•			•	•	•		
12	MDNR	Pontiac Lake Rec. Area	3,745													•						•	•	•	•	•	•
13	MDNR	Proud Lake Rec. Area	4,700													•					•	•	•				
14	MDNR	Seven Lakes State Park	1,434																			•	•	•			
15	MDNR	Sterling State Park	1,300													•			•			•	•	•			•
16	MDNR	Wetzel St. Rec. Area	900																							•	•
17	MDNR	William G. Milliken State Park	31													•								•	•		

**Table 15. Regional Non-motorized Trail Facilities**

Key	Trail Name (* = part of Iron Belle Trail)	Location	Distance
60	Border-to-Border*	Washtenaw Cty	40+ miles
61	Clinton River Trail*	Oakland Cty	16 miles
62	Downriver Linked Greenway	Wayne Cty	75+ miles
63	Freedom Metro Trail*	Macomb Cty	19.3 miles
64	Hines Park Trail	Wayne Cty	17.5 miles
65	Huron Valley Trail	Wayne Cty	25 miles
66	I-275 Metro Trail	Wayne Cty	35 miles
67	Lakes Community Trail	Oakland Cty	8.9 miles

Key	Trail Name (* = part of Iron Belle Trail)	Location	Distance
68	Macomb Orchard Trail*	Macomb Cty	23 miles
69	M. Levine Lakelands Trail	Livingston Cty	34 miles
70	Michigan Airline Trail	Oakland Cty	7.8 miles
71	Paint Creek Trail	Oakland Cty	8.9 miles
72	Polly Ann Trail	Oakland Cty	14.2 miles
73	River Raisin Heritage Trail*	Wayne Cty	8 miles
74	Wadhams to Avoca Trail	St. Clair Cty	12 miles
74	West Bloomfield Trail	Oakland Cty	6.8 miles

		Table of Contents										Executive Summary										Goals & Objectives										Action Program										Needs Assessment & Public Participation										Recreation Inventory										Administrative Structure										Community Background									
		TRAILS					WATER SPORTS					WINTER SPORTS					CAMPING										HUNTING/FISHING																																																						
		Hiking	Biking	Bike Rental	Mountain Biking / BMX	Equestrian	Swimming / Beach	Splash pad / Pool / Water slide	Paddlesports	Boat Rental	Boat launch	Designated Water Trail	Snowshoeing	Cross Country Skiing	Snowmobiling	Ice Skating / Hockey	Sledding	Equestrian Camping	Electrical Service	Winter Camping	Concession Store / Food	Cabins and lodges	Rustic site	Group Use Area	Walk-in / Paddle-in sites	Yurts	Vault or Portable Toilets	Modern restrooms	Sanitation station	Shooting range	Archery Range	Hunting	Fishing	Fishing pier																																															
		•					•		•	•	•			•	•						•	•					•					•	•	•																																															
		•	•	•			•		•	•			•	•																																																																			
		•			•	•	•	•	•	•				•				•	•	•		•	•	•		•	•	•	•			•	•	•																																															
		•					•		•		•			•				•		•						•	•	•	•			•	•	•																																															
		•			•	•	•		•		•			•				•	•	•		•	•	•			•	•	•			•	•	•																																															
		•	•		•		•		•	•	•			•					•					•	•			•	•	•			•	•	•																																														
							•												•			•	•	•			•	•	•																																																				
		•	•																•				•	•				•	•	•																																																			
		•																																																																															
		•																																																																															
		•																																																																															
		•																																																																															
		•																																																																															
		•	•				•		•	•	•			•													•	•	•			•	•	•																																															
		•												•	•																	•	•																																																
		•	•											•	•																	•	•																																																

Table 16. Major Water Trails

Key	Water Trails	Location	Distance
80	Clinton River	Oakland and Macomb C ounties	81.5 miles
81	Detroit Heritage Trail	Wayne County (Belle Isle, Rouge River, Huron River, and Lower Detroit River)	33 miles
82	Huron River	Livingston, Oakland, Washtenaw, and Wayne Counties	104 miles
83	Lake St. Clair Coastal	St. Clair County / Lake St. Clair	33+ miles
84	Monroe County / River Raisin / Lake Erie	Monroe County (six segments)	11+ miles
85	Rouge River	Wayne County (four segments)	14.4
86	Shiawassee River	Oakland, Saginaw, and Shiawassee Counties	85.3
87	Flint River	Genesee, Oakland, and Saginaw Counties	104

51 - RECREATION INVENTORY - City of Berkley 2021 - 2025 Parks & Recreation Master Plan



**TABLE 14. Regional Recreation Facilities (cont.)**

Key	AGENCY: HCMA = Huron Clinton Metroparks, MDNR = Michigan Department of Natural Resources, OC = Oakland County Parks & Rec	Property Name	Acres / Miles	ACTIVE SPORTS										PASSIVE ACTIVITIES													
				Baseball / Softball	Basketball	Disc Golf	Golf	Horseshoes/shuffleboard	Sand volleyball	Skate park	Soccer / multipurpose field	Tennis / pickleball	Cricket	Banquet / Special Events	Visitors Center / Nature Center / Museum	Comm. Center / Meeting space	Fairground / Major event space	Fitness Center / Gym / Exercise Equipment	Michigan State Park Explorer	Nature Programs	Geocacheing	Metal Detecting	Dog Park / Trial Course	Pet Friendly Area	Playground	Picnic Area	Picnic Shelter
20	HCMA	Delhi	81	.														.	.			.	.	.		.	
21	HCMA	Dexter-Huron	122	.														.	.			.	.	.		.	
22	HCMA	Hudson Mills	1,549	.	.	.	.	.	.		.	.						.	.	.			.	.	.		.
23	HCMA	Huron Meadows	1,540				.										.	.	.			.	.	.		.	
24	HCMA	Indian Springs	2,547	.			.	.	.								.	.	.			.	.	.		.	
25	HCMA	Kensington	4,543			.	.										.	.	.		.	.	.	.		.	
26	HCMA	Lake Erie	1,607		.		.		.								.	.	.			.	.	.		.	
27	HCMA	Lake St Clair	770	.	.		.	.	.			.					.	.	.		.	.	.	.		.	
28	HCMA	Lower Huron	1,258	.	.				.			.					.	.	.			.	.	.		.	
29	HCMA	Oakwoods	1,756														.	.	.			.	.	.		.	
30	HCMA	Stony Creek	4,461	.	.	.	.		.		.				.		.	.			.	.	.	.		.	
31	HCMA	Willow	1,531	.	.	.	.		.		.				.			.	.			.	.	.		.	
32	HCMA	Wolcott Mill	2,625					.	.								.	.	.			.	.	.		.	
40	OC	Addison Oaks	1,140			.	.	.	.						.			.				.	.	.	.	.	
41	OC	Catalpa Oaks	24	.							.							.				.	.	.		.	
42	OC	Farmers Market	3																								
43	OC	Glen Oaks	122				.								.												
44	OC	Groveland Oaks	361	.	.			.	.	.												.	.	.			
45	OC	Highland Oaks	302															.					.			.	
46	OC	Independence Oaks	1,286	.				.	.								.					.	.	.		.	
47	OC	Lyon Oaks	1,041				.	.			.							.			.	.	.	.		.	
48	OC	Orion Oaks	916															.			.	.	.			.	
49	OC	Red Oaks	163				.				.				.			.			.	.	.	.		.	
50	OC	Rose Oaks	640															.					.			.	
51	OC	Springfield Oaks	333				.					.			.											.	
52	OC	Waterford Oaks	199					.	.			.			.			.				.	.	.		.	
53	OC	White Lake Oaks	195				.								.											.	





## Comparison To Recreation Standards

The National Recreation and Park Association (NRPA) has classified parks and recommended an appropriate amount of parkland for a given population size. Although these guidelines are useful in pointing out deficiencies, a community's recreation system should be tailored to meet the needs of the community and not be solely based on national guidelines.

According to the NRPA, parks and open spaces are categorized as mini-parks, neighborhood parks, community parks, regional parks, and preserves. The mini, neighborhood, and community parks are the close-to-home parks, designed to satisfy the recreational needs of local communities within a service radius of up to two miles. All of the City parks are considered close-to-home parks. According to NRPA standards, the amount of close-to-home parkland recommended is 6.25 to 10.5 acres for every 1,000 residents.

Regional parks are parks that serve a broader area (one hour drive or about a 40 mile radius) than community parks and focus on meeting the recreation needs of the region as well as preserving unique landscapes and open spaces. In City of Berkley, they include the HCMA, state, and city-owned parks and recreation areas described in the preceding pages. The NRPA standard for regional parks is 15 to 20 acres of parkland per 1,000 people.

Other types of parks include the following:

- **Schoolyards:** Areas that can fulfill the space requirements for other classes of parks such as close-to-home parks, which include all public school facilities in the City;
- **Greenways:** Areas that link park system components together to form a continuous park environment, which include the City safety paths; and
- **Private Recreation Facilities:** Parks and recreation facilities that are privately owned yet contribute to the local parks and recreation system, which include the previously described private facilities.

According to these standards, Berkley is deficient in terms of total close-to-home parkland. Given the built-out nature of the City, acquiring significant parkland will be challenging. While the City is encouraged to continue searching for new park opportunities, it is important to note that other recreation facilities, including private facilities and facilities in neighboring communities, help to meet the needs of residents. In addition, the City of Berkley residents are well-served by regional park facilities.

**Table 17. Suggested Parkland Acreage**

Type of Park	NRPA Standard (Per 1000 pop.)	Required (Based on 14,592 pop)	Existing	Deficient
Close-to-home Parkland	6.25 - 10.5 acres	91-153 acres	48 acres	46 acres
Regional Parks	15 - 20 acres	219 - 292 ac.	79,000+ ac.	-
Berkley Public Schools	-	-	39 acres	-
Open Space (Cemetery)	-	-	133 acres	-

## Park Facility Comparison

Table 18 provides a comparison of the City's park facilities against NRPA's park facility standards. The City is only deficient in a few active recreational facilities, including court games such as badminton, volleyball, and multi-use courts. Regional trails, while being addressed by the County, is another area that could be improved upon.

The City parks do not include any volleyball, badminton, or multi-use courts. Given the small area required for these court games, they may be easily added to existing parks. Multi-use courts in particular could be used to meet the demand for a variety of court sports and other activities.

**Table 18. Comparison to Facility Development Standards**

Type of Facility	NRPA Standard (unit/pop.)	Required (Based on 14,970 pop)	Existing			Deficient
			City	School	Private	
Badminton	1/5,000	3				Yes
Basketball	1/5,000	3	2	4		No
Handball	1/20,000	0				No
Ice Hockey	1/100,000	0	1 indoor			No
Tennis	1/2,000	8	10			No
Volleyball	1/5,000	3				Yes
Baseball/Softball	1/5,000	3	7	1		No
Field Hockey	1/20,000	0				No
Football	1/20,000	0		1		No
Soccer	1/10,000	2	2	2		No
Golf-driving range	1/50,000	0				No
1/4 mile track	1/20,000	0		1		No
Multi-use court	1/10,000	2				Yes
Trails	1/region	1				Yes
Archery Range	1/50,000	0				No
Skeet/Trap field	1/50,000	0				No
Golf	1/50,000	0				No
Swimming pool	1/20,000	0		1		No



## Non-Motorized Trail System

Given the urban character of the City and the surrounding area, existing trails or pathways are in the form of sidewalks. The City has some roadways designated as bicycle routes, but does not have nature trails or dedicated bicycle lanes. The current suggested bicycle route configuration does not connect outside of the city limits, and is not marked with signage or any kind of road marking.

Any efforts by the city towards building a trail network should be communicated with Oakland County and neighboring communities. Development of a municipal trail coalition in southeast Oakland County would enable communities to create cohesive trail networks throughout the area and provide opportunities for cost sharing both during construction and in subsequent maintenance of the facilities.

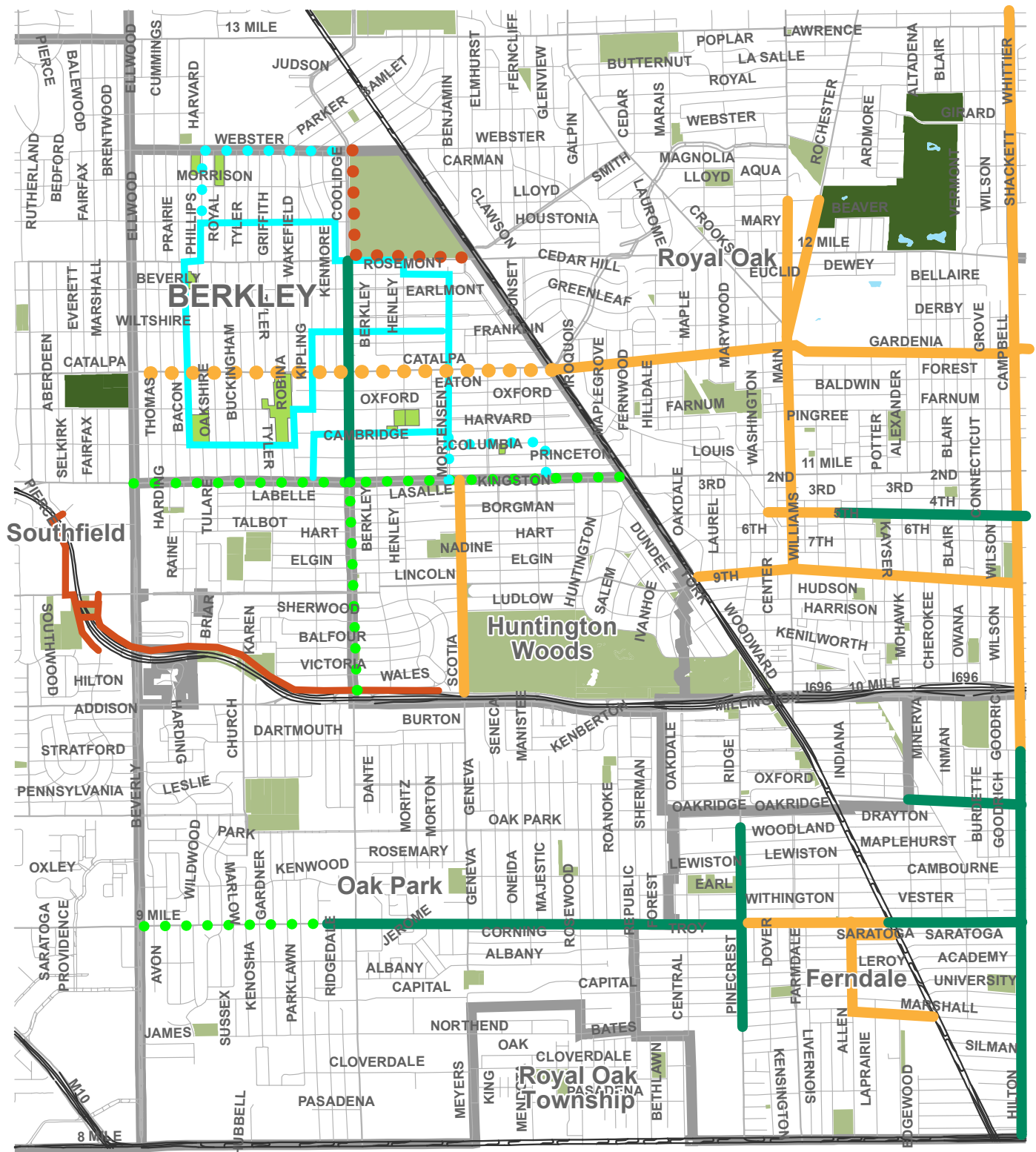
A proposal for a linear park along the western edge of Roseland Cemetery, and adding connection points to the cemetery for pedestrian users, are two opportunities which should be explored. Establishment of linear parks along the western and southern edge of Roseland Cemetery would create strong connections to Beaumont Hospital and other amenities to the north, while shared lane markings along Catalpa Street and Mortenson Boulevard could extend existing routes from Huntington Woods and Royal Oak.

Berkley's existing bicycle pathway system should be adjusted to include connections to all city parks. Clearly marking the existing network through a combination of shared lane markings (sharrows) and wayfinding signage would help to establish the routes in the city and alert drivers to increased bicycle traffic. Lastly, as the primary form of non-motorized structure in Berkley, maintenance of existing sidewalks must remain a priority.

Figure 8. Examples of safety markings and bike route wayfinding signs



Map 5. Proposed Multi-Community Bike System and Berkley Pathway System



## Potential Multi-Community Bike System

Cities of Berkley, Huntington Woods, Oak Park, & Royal Oak

- 0 1,500 3,000 6,000 Feet
- Existing/Proposed Multi-Use Path
  - Existing Dedicated Bike Lane
  - Proposed Future Bike Lane
  - Existing/Proposed Shared-Use Lanes

- Berkley Parks & Recreation Facilities
- Other Recreation & Open Space Facilities
- Oakland County Parks
- Existing/Proposed Berkley Pathway System

Sources: Cities of Berkley,  
Huntington Woods, Oak Park, & Royal Oak  
Non-motorized Transportation & Recreation Plans  
Oakland County GIS, SEMCOG  
May 2020  
Carlisle/Wortman Associates, Inc.  
Ann Arbor, Michigan



## Accessibility Assessment

A critical component in planning for recreation facilities is providing barrier-free access in order to accommodate the needs of all people, including those with disabilities. The ranking system suggested by the MDNR Guidelines (2009) was used to evaluate the parks. The ranking system ranges from 1 to 5 and is described as follows:

1. None of the facilities meet accessibility guidelines;
2. Some of the facilities/park areas meet accessibility guidelines;
3. Most of the facilities/park areas meet accessibility guidelines;
4. The entire park meets accessibility guidelines; and
5. The entire park was developed/renovated using the principles of universal design.

Each of the parks was evaluated using this ranking system. The specific elements reviewed included parking, paths of travel from parking to activity areas, activity areas themselves, and surfacing. Table 19 provides the result of this assessment.

The City has been diligent in bringing their recreation facilities into compliance. Current and future park projects are designed to meet or exceed accessibility guidelines and standards of the American with Disabilities Act (ADA). Current deficiencies regarding accessibility are mainly the result of older equipment or facilities which pre-date ADA standards.

It is the intent of City of Berkley Parks & Recreation Department to retrofit these facilities during park upgrade and renovation projects.

**Table 19. Accessibility Assessment**

Park	Rank	Description
Angell Park	3	Accessible parking and routes provided to playground facilities. Some playground facilities are also accessible. However, no accessible routes to ball field or basketball court.
Community Park	4	Accessible parking and pathways to activity areas. Buildings are accessible, and play structure is accessible.
Jaycee Park	3	Accessible parking and accessible route from parking area to picnic shelter. Accessible route to activity area, and most play structures are accessible.
Kiwanis Tot Lot	2	Engineered wood fiber (EWF) around play equipment. Accessible routes not provided to all equipment.
Lazenby / Friends / Rogers Park	2; 3; 4	Accessible parking at Lazenby Field; however, no accessible pads around or route to bleachers. Accessible route to activity areas at Oxford Park; however, no accessible parking. Accessible parking and accessible route to most play structures at Rogers Park.
Merchants/ Oxford Park	n/a	Currently under construction. Planned facilities all designed to meet or exceed ADA standards.
Pattengill Playground	3	Accessible parking and pathways to play structures. No accessible route to bleachers or ballfield.

## MDNR Grants

The City of Berkley has received seven Michigan Department of Natural Resources (MDNR) grants for parkland development since 1973. Table 20 presents a description of the MDNR grants received including the current use and condition of the grant-assisted parks and facilities.

**Table 20. Grant History**

Grant Number	Application Year & Source	Description	Grant Amount	Current Use / Condition
26-00418	1973 LWCF	Merchants Park: Lighting for an existing ball diamond	\$14,500	The ball fields are in good condition. The lights were replaced in 2009.
26-00890	1977 LWCF	Community Park: Development of six tennis courts.	\$27,500	The tennis courts were reconstructed in 1999 and are in excellent condition.
26-01023 K	1977 LWCF	Lazenby Field: Lighting for existing ball field, and installation of two lit tennis courts.	\$18,500	The ball field is in good condition. The lighting for the ball field was renovated in 2009. The tennis courts are in excellent condition.
26-01324	1984 LWCF	Angell Park: Installation of two tennis courts.	\$20,500	The tennis courts were restored in 2011 and are in excellent condition.
BF90-174	1990 RBF	Community Park: Construction of an addition to the Senior Center Annex (including meeting area, office space and storage area)	\$70,000	The condition of the addition is in fair to poor condition. A crack in one wall was patched in 2016, but a full repair is still required.
26-01493	1992 LWCF	<ul style="list-style-type: none"> <li>Jaycee Park: Playground equipment and pathway.</li> <li>Kiwanis Tot Lot: Playground equipment.</li> <li>Community Park: Playground equipment and pathway</li> </ul>	\$60,000	The playground equipment was replaced in 1994, and the current equipment is in good condition. The pathways are in good condition.
CM99-069	1999 MNRTF	Community Park: Tennis court reconstruction and fence removal & replacement	\$99,000	Tennis courts and fence are in good condition.
26-01817-434	2018 LWCF	Merchants / Oxford Park Enhancements: New splash pad, restrooms, and park additions	\$180,000	Construction slated for fall 2020.





*Image Source: Second Wave Media*