

PROPOSAL

Town Hall Renovation

Town of South Berwick RFQ/P

12.20.23





CONTENTS

2 Firm

Team Members

Firm Profile

7 Experience

Project Experience

Newmarket Facilities Planning

Portsmouth Senior Activity Center

Somersworth Library Feasibility Study

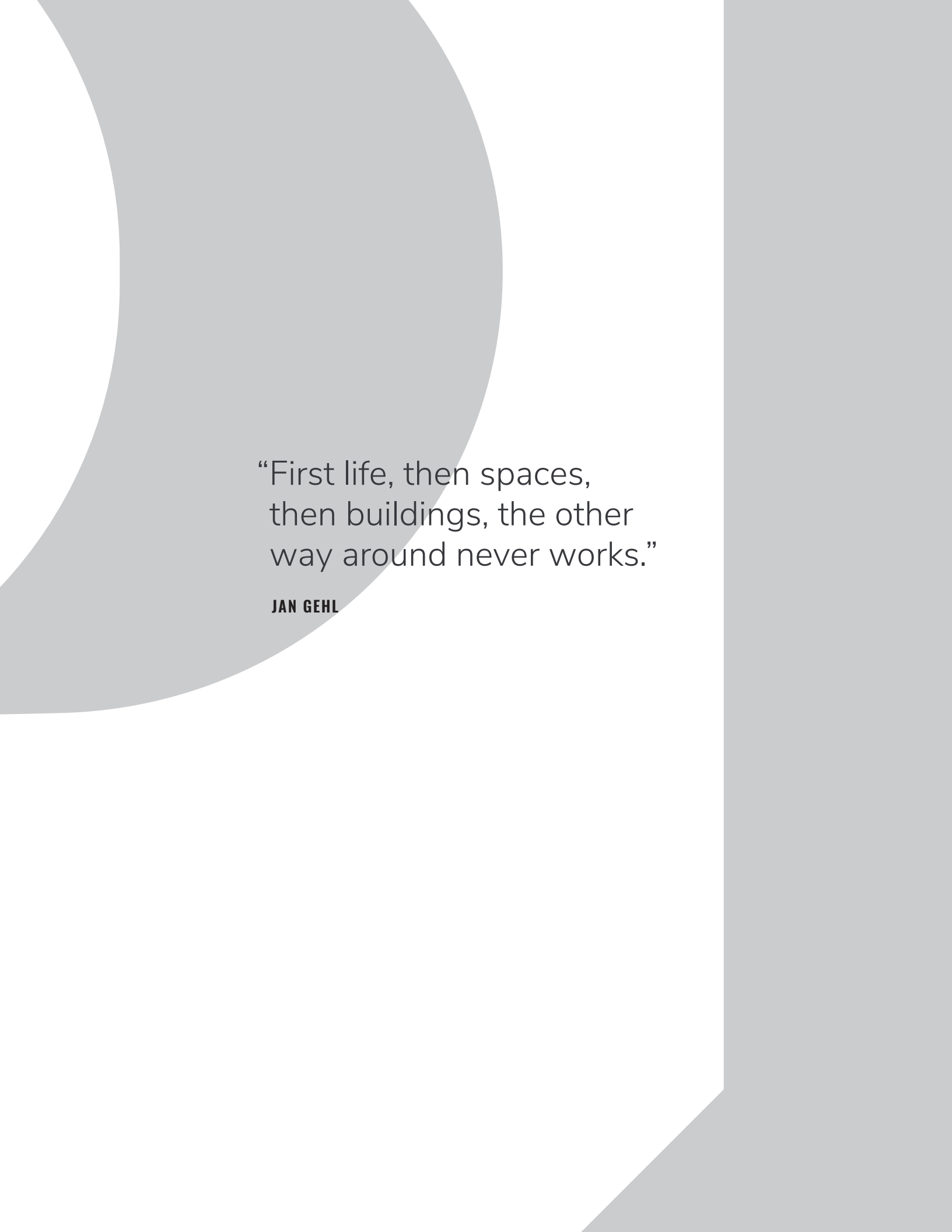
Saint Anselm College Humanities

Raymond Town Office Planning Study

CES Municipal Projects

15 Team

Team Resumes



“First life, then spaces,
then buildings, the other
way around never works.”

JAN GEHL

12.20.23

Timothy Pellerin
Town Manager, Town of South Berwick
180 Main Street
South Berwick, ME 03908

RE: REQUEST FOR PROPOSAL

Dear Tim:

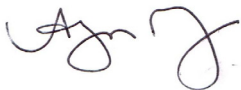
Placework is committed to creating active, engaging spaces for our region's cities and towns. Our multifaceted team of architects and planners has a broad range of experience in municipal and institutional projects, from conceptual design and planning through construction. We are delighted to submit our qualifications to the Town of South Berwick.

We understand your dilemma as your community grapples with the decision to renovate a treasured historic building, or invest in a new facility. We value the opportunity to play an integral role in helping you make decisions supported by accurate data. We will engage you in a deliberate process that will aim to define needs for a facility to efficiently meet administrative needs while reinforcing the community center and positioning your town hall as an sustainable resource that will serve South Berwick for generations to come.

We have invited an experienced team of engineering and cost estimating partners to join us in this study. We have worked with all of these team members in the past, and are confident that the unique combination of integrated design services offered by our team will allow us to strengthen your community and town fabric while maximizing space, energy and cost efficiency. Working closely with you and project stakeholders, the Placework team will assist you in creating an efficient hub for town administration.

We are confident in our team's proven ability to deliver a process and design worthy of the Town of South Berwick residents, administrators, and staff. We look forward to being part of this important project!

Sincerely,



Alyssa Manypenny Murphy, AIA, LEED AP
Principal

FIRM

Project Team

Our team has worked together on several projects of similar scope and complexity. We have strong working relationships and believe that this team is uniquely qualified for this particular project.

We have recently completed a study for the Town of Newmarket's municipal facilities, including their Town Hall - also a historic school building. This engineering team has supported us on several such studies for both municipal and private clients. Marc Jobin of Jobin Construction Consultants provides a wide range of cost-estimating and owner's project management services. He has provided accurate and concise cost estimating for many of our municipal study projects.

PLACEWORK

ARCHITECTURE +
PROJECT MANAGEMENT

Alyssa Murphy, AIA, LEED AP
Principal

Josh Lacasse, AIA, LEED AP
Project Manager

CES

MECHANICAL
ELECTRICAL
PLUMBING
FIRE PROTECTION

Douglas Lajoie, PE, LEED AP, MCPPO
Chief Electrical Engineer

Delbert Smith, Jr., PE, LEED AP
Chief Plumbing & Fire Protection Engineer

James Senatro, PE, LEED AP
Chief Mechanical Engineer

Curtis Chase
Project Manager

THORNTON TOMASETTI

STRUCTURAL

Ethan Rhile, P.E.
Structural Engineer

Steven Knowles, P.E.
Project Manager

JOBIN CONSTRUCTION CONSULTANTS

Marc Jobin
Professional Cost Estimator

Placework

To achieve a lasting positive impact, we need to envision it.

Placework's mission is to create transformative design for the benefit of people and planet. We believe it is possible for buildings to make a positive contribution to human and ecological well-being. Regenerative outcomes require us to question basic assumptions about what is possible. This approach requires a mindset that encompasses both the artist and the technician. To manifest a regenerative vision, we need the tools to ensure our aspirations are supported by the reality of our design. At Placework, we engage technology to model future outcomes to drive responsible decision-making today.



SERVICES

ARCHITECTURAL DESIGN
FEASIBILITY STUDIES
PROGRAMMING
MASTER PLANNING
CAPITAL PLANNING
PROJECT DEFINITION
CONCEPTUAL DESIGN



Designing with Purpose.

As a Certified B Corporation, Placework has demonstrated the highest verified standards of social and environmental performance, transparency, and accountability. We are leading the shift from a "do less harm" paradigm to one that creates a just and healthy future for all.

Placework was founded in 2010 and established as a PLLC in 2013. Formerly Manypenny Murphy Architecture, we changed our name in 2019 to better reflect the skills, vision, and values of our team. We became a Certified B Corporation in 2022.



ABOUT THORNTON TOMASETTI

Thornton Tomasetti optimizes the design and performance of structures, materials and systems for projects of every size and level of complexity. An employee-owned organization of engineers, scientists, architects and other professionals collaborating from offices worldwide, we support clients by drawing on the diverse expertise of our integrated practices. We are committed to be a sustainable and enduring organization and the global driver of innovation in our industry.

Here’s how

Our work is about more than applying engineering principles to our client’s projects. It’s about rethinking how typical projects are accomplished to find better ways of tackling challenges — pairing a deep understanding of our clients’ objectives with new angles, approaches and answers to help them go further. We work across disciplines, without silos, because we know that success is achieved through the dynamic exchange of people, perspectives and ideas. By embracing this approach, not only do we bring the forward-thinking visions of our clients to reality, we also lay the groundwork for a better, more resilient future and make a lasting impact.

CAPABILITIES

- | | |
|---|--|
| Structural engineering | Sustainability consulting |
| Acoustics, noise & vibration control | Resilience consulting |
| Construction engineering | Protective design & security |
| Façade engineering | Transportation & infrastructure |
| Restoration & renewal | Applied Science |
| Forensics | |

70+

YEARS

90,000+

PROJECTS

50+

LANGUAGES SPOKEN

45+

OFFICES WORLDWIDE





Firm Profile



About CES

Founded in 1994, CES is a mechanical, electrical, plumbing, and fire protection engineering and commissioning firm with 160 employees in seven national offices. CES specializes in the design of custom building systems for projects across the United States. For over 25 years, our firm has participated in facility assessments and analysis, master planning, complex renovations, and new construction projects. Nearly all of our projects invite the possibility of sustainable design elements - from the incorporation of high performance building design to LEED certification and Net Zero buildings.

SERVICES

- Mechanical
- Electrical
- Plumbing
- Fire Protection
- LEED & Net Zero Design
- Commissioning

MARKETS

- Academic
- Civic
- Healthcare
- Hospitality
- Workplace
- Multifamily Housing
- Private Residences

SIZE

- 160 Employees
- 15 LEED AP
- 6 HERS

OFFICE LOCATIONS

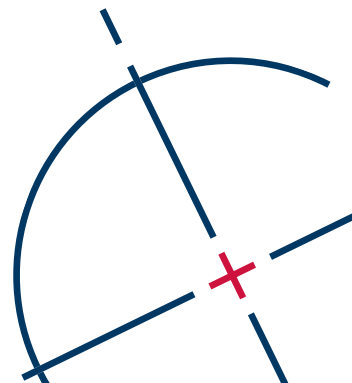
- Connecticut
- Massachusetts
- New Hampshire
- New York
- Florida
- Texas
- Montana

ceseng.com

Critical Thinkers | Problem Solvers

As engineers, we are critical thinkers and problem solvers. We come about it naturally and we are drawn to situations where we can use our innate problem solving skills. We like to take things apart to figure out how they work and then put them back together just for fun so we can learn from the process.

We approach projects the same way: take the time to listen and learn first, apply lessons learned and experience from past projects and offer a solution. If that doesn't work we reconsider, rethink, re-engineer. We are engineers and solution providers by nature.



EXPERIENCE



Town of Newmarket Facilities Plan

A comprehensive study to inform town facility planning

For the Town of Newmarket Facility Master Plan, Placework evaluated nine Town Facilities and developed planning recommendations to inform Capital Improvement Planning. Beginning with an assessment of each existing facility and an assessment of town-wide space needs, the project team determined that several facilities, including the Town Hall and Police Department, require upgrades.

Placework developed conceptual planning options and preliminary budgets for the Town of Newmarket's use in future planning, with a focus on the renovation and addition to the existing Town Hall and Police Department buildings. The final report will support Newmarket's ongoing planning and development as they strive to maintain their buildings as functional, efficient and resilient resources for the 21st century.

SCOPE

Facilities Planning Study

CLIENT

Town of Newmarket

YEARS

2022-2023

REFERENCE

Steve Fournier
Town Manager
Town Hall
186 Main Street
Newmarket, NH 03857





Portsmouth Senior Activity Center

Adaptive reuse for an engaged community

Placework collaborated with AECm Engineering and the City of Portsmouth to transform a mid-century utilitarian structure into a welcoming 21st-century multi-use space. From the early conceptual design stages through construction, our team re-imagined a former 1950s Army Reserve Center as a vibrant hub to support programming for the local senior community. The municipal facility not only meets the current need for flexible spaces of various sizes, but anticipates future growth of multi-generational community resources on the site.

A new entrance vestibule and canopy defines the new entry while providing a covered arrival and seating area. The lounge, a comfortable and inviting gathering space, is the focal point of the new interior; activity rooms of various sizes allow for flexible use, from lectures to yoga and dancing. Finishes throughout the building were chosen to soften the existing masonry construction and provide warm, tactile material elements.

SCOPE

Adaptive Reuse, Municipal

CLIENT

City of Portsmouth, NH

YEARS

2017-2020

REFERENCE

Joe Almeida
Facilities Manager,
City of Portsmouth
(603) 766-3348
jalmeida@cityofportsmouth.com





Somersworth Library Feasibility Study

Space planning and accessibility for a historic structure

Originally built in 1968, the Somersworth Public Library is a unique building that boasts a wide-open interior with multiple dynamic levels connected only by stairs. Placework initially performed a life-safety and accessibility study, which led to considerations of how to reorganize or expand the existing square footage to suit the library's current and future needs.

Our team assessed the library operations as well as structural and building systems. After considering both renovation and addition options, the selected plan proposes an addition to better position the children's area, bring restrooms onto the main level, and provide new engagement with the street. The new design will also provide more meeting and common space for Somersworth residents.

A cost estimate was developed to support future planning.

SCOPE

Renovation/Addition Study

CLIENT

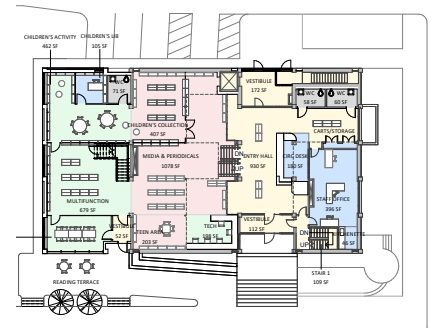
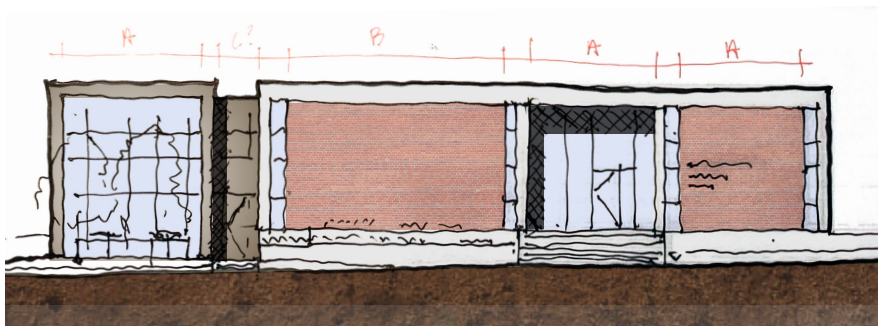
Town of Somersworth, NH

YEAR

2022

REFERENCE

Scott A. Smith
Deputy City Manager
Somersworth, NH
603.692.9504





Saint Anselm College Humanities Institute

Adaptive reuse at the heart of campus

The former campus central heating plant has recently reopened as the new home of the Gregory J. Grappone Humanities Institute. The prominent location between Alumni Hall —the college's original building — and the college's new welcome center provides an opportunity to highlight both a charming historic building and the central importance of the humanities to the institution.

The design transforms the existing elevated level and cavernous basement below into flexible classrooms as well as collaborative community space. The new site design and entrance highlight features of the existing building and enliven this area of campus. Over the course of four years, Placework worked with Saint Anselm leadership and faculty to develop the program, conceptual design, and budget to assess the feasibility and support fundraising. We provided full architectural and interior design, including coordination of all furnishings.

SCOPE

Adaptive Reuse

CLIENT

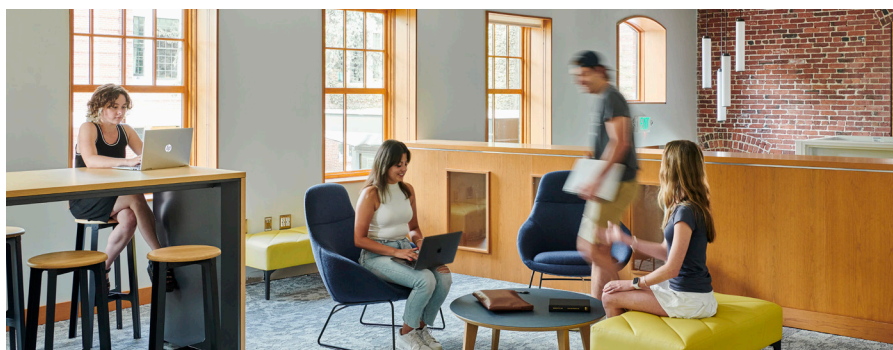
Saint Anselm College

YEARS

2019-2023

REFERENCE

Jonathan Woodcock
Director of Physical Plant
Saint Anselm College
(603) 641-7118
jwoodcock@anselm.edu





Raymond Town Office Planning Study

New life for a beloved building at the town center.

Placework is working with the Town of Raymond to restore and transform its Old Firehouse - a 19th century structure at the heart of the town center. The building is prominently located on the town green within the municipal complex. The exterior will be restored to the character of its original construction, and the interior will be transformed to meet the needs of several town administrative departments.

Placework conducted a comprehensive existing conditions assessment to identify building deficiencies with regard to structure, envelope, mechanical systems and code compliance, created a detailed program documenting space needs, and developed a conceptual design and budget for the work. Frequent interaction with town representatives resulted in a design that maximizes efficiency of the building and creates a central green between the two adjacent town facilities.

SCOPE

Adaptive Reuse

CLIENT

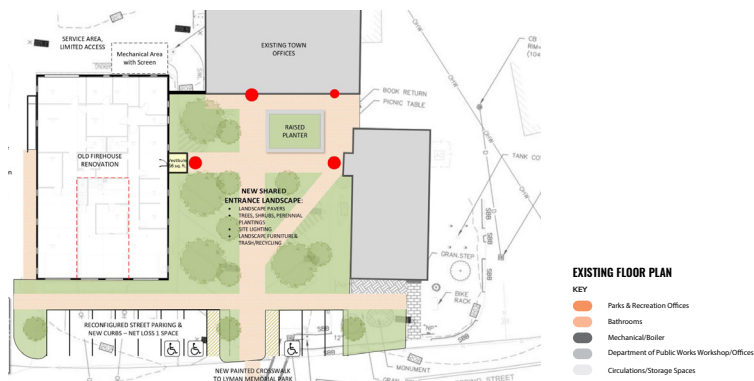
Town of Raymond, NH

YEAR

2020-2021

REFERENCE

Stephen Brewer
Director, Dept. of Public Works
Town of Raymond
603.365.7134
sbrewer@raymondnh.gov



Municipal Facilities Studies + Masterplans



With an expansive portfolio of facility assessments and masterplanning projects, we are highly skilled at providing input to identify and document existing building systems as well as making recommendations for expanding, reusing, or replacing various mechanical, electrical, and fire protection systems.

15 Ocean Avenue

Site Utility Masterplan
Bridgehampton NY

Auburn Public Safety

Facilities Study
Auburn MA

Butler/McCook House

Masterplan
Hartford CT

Chubb/Executive Risk

Masterplan
Simsbury CT

Institute of Living

Masterplan
Hartford CT

Island of Nantucket

Facilities Study
Nantucket MA

New Britain YWCA

Masterplan
New Britain CT

Old Lyme Library

Facilities Study
Old Lyme CT

Town of Acton

Facilities Study
Acton MA

Town of Brimfield

Facilities Study
Brimfield MA

Town of Brookfield

Masterplan
Brookfield CT

Town of Hadley

Facilities Study
Hadley MA

Town of Hanover

Facilities Study
Hanover MA

Town of Longmeadow

Masterplan
Longmeadow MA

Town of Madison

Facilities Study
Madison CT

Town of Rockport

Facilities Study + Masterplan
Rockport MA

Town of Newtown

Facilities Study
Newtown CT

Town of Simsbury

Facilities Study
Simsbury CT

Town of Suffield

Facilities Study
Masterplan
Suffield CT

Town of Stoughton

Facilities Masterplan
Stoughton MA

Municipal Building Experience



Aquinnah Town Hall
Aquinnah MA

Acton Town Wide Study
Acton MA

Brimfield Town Study
Brimfield MA

Bristol Municipal Buildings Study
Bristol CT

Cheshire Senior Center
Cheshire CT

Chester Town Hall
Chester CT

City Hall Plaza
Boston MA

Malden Municipal Buildings Study
Malden CT

Clinton Town Hall
Clinton CT

Colchester Municipal Offices
Colchester CT

Cromwell Municipal Offices & Community Center
Cromwell CT

Danbury Town Hall
Danbury CT

East Haddam Senior Center
East Haddam CT

East Hartford Town Hall
East Hartford CT

Farmington Town Hall
Farmington CT

Franklin Town Hall
Franklin CT

Glastonbury Town Hall
Glastonbury CT

Golden Isles Park
Hallandale Beach FL

Greenwich Senior Center
Greenwich CT

Hadley Municipal Buildings Study
Hadley MA

Hatfield Town Hall
Hatfield MA

Hicks Memorial Municipal Center
Tolland CT

Killingworth Town Hall
Killingworth CT

Longmeadow Facilities Study
Longmeadow MA

Lyme Town Hall and Library
Lyme CT

Malden Town Hall
Malden MA

Monson Police & Town Offices
Monson MA

New Britain YMCA
New Britain CT

New Canaan YMCA
New Canaan CT

New Haven City Hall
New Haven CT

Newington Town Hall & Sr. Center
Newington CT

New London Buildings Study
New London CT

New Milford Town Hall
New Milford CT

New Salem Municipal Buildings
New Salem MA

Newtown Facilities Study
Newtown CT

Oak Bluffs Town Hall
Oak Bluffs MA

Oakland Park Facilities Study
Oakland Park FL

Oakland Park City Hall
Oakland Park FL

Pittsfield State Office Building
Pittsfield MA

Salem Town Hall
Salem MA

Shelton Town Hall
Shelton CT

Simsbury Town Hall
Simsbury CT

Southbury Town Hall
Southbury CT

South Windsor Town Hall
South Windsor CT

Suffield Senior Center
Suffield CT

TEAM

Alyssa Manypenny Murphy, AIA, LEED AP



Alyssa is a registered architect and Principal of Placework. She leads projects that serve communities for municipal, higher education, and non-profit clients. Her expertise ranges from early project planning studies through design and construction administration. Alyssa's pragmatic optimism supports her ability to engage disparate stakeholders and define a vision for collective success.

Prior to founding Placework, Alyssa led education and multi-family housing projects for ten years in New York City. Alyssa is currently serving as the New Hampshire representative to the national Strategic Council of the American Institute of Architects.

EDUCATION

University of Pennsylvania
M. Arch, 2001

Architectural Association
London

Middlebury College
B.A. magna cum laude 1995

REGISTRATIONS

NH- 03806
ME- 3771
MA- 952622
NY- 031072

HONORS

AIA/NH Clinton Sheer Award -2022

AIA/NH Excellence in Architecture
Merit Awards - 2021 & 2016

Plan NH Merit Award - 2020
Madbury Public Library

COMMUNITY

AIA National Strategic Council
2022-2025

Editor-in-Chief, Forum
AIA NH quarterly magazine
2018-present

AIA New Hampshire
Board of Directors, 2015-2020
President 2018

New Hampshire Architecture
Foundation, President 2019-2020

Seacoast Community School,
Board Member, 2012-2016

SELECT PROJECTS

Saint Anselm College Humanities Institute
Manchester, NH Programming, through construction 2019-2023

Madbury Public Library
Madbury, NH Programming through construction, 2015-2019

Portsmouth Senior Activity Center
Portsmouth, NH Programming through construction, 2017-2020

Somersworth Library Planning Study
Somersworth, NH. Space Planning and Conceptual Design, 2022

Saltonstall Farm Event Barn
Stratham, NH Adaptive Reuse, 2019-2020

Dover Children's Home
Dover, NH Historic Preservation and Renovation 2018-19

University of New Hampshire – Hubbard Hall Expansion Study
Durham, NH Facility assessment, programming and schematic design, 2017-18

South Church – Social Hall & Classroom Renovation
Portsmouth, NH. Programming through construction, 2017-2018

University of New Hampshire – New England Center
Durham, NH Adaptive Reuse for Advancement, 2015-2017

EXPERIENCE

Higher Education Studio Project Manager, Harriman
Auburn, Maine 2009-2012

Associate, Edelman Sultan Knox Wood/Architects
New York, New York 2001-2009

Josh Lacasse, AIA, LEED AP



Josh Lacasse is a registered architect with a background in planning and conceptual design through construction administration. He has over 15 years of experience in academic, cultural, and government projects, with specific experience working with existing buildings. Josh's approach to design is research based, contextual, and focused on satisfying the diverse needs of clients, stakeholders, and community members.

Prior experience rehabilitating architecturally significant existing buildings fostered in Josh a passion for adaptive reuse to confront new requirements regarding technology, climate, and social issues.

EDUCATION

Syracuse University
B. Arch. 2007, cum laude

REGISTRATION

NH - 03968
MA - 31907

HONORS

AIA New York Merit Award
Subcat Studios

SCUP Excellence in Architecture
AIA Illinois Frank Lloyd Wright Award
AIA New England Honor Award
University of Chicago, Saieh Hall

AIA Rhode Island Design Award
Illuminating Engineering Society
Award of Merit
The Wheeler School, Gilder Center for the Arts

COMMUNITY

Guest Critic
Boston Architectural Center
2010-2016

Volunteer, Boston Community
Preservation Office
2018-2019

Pro-bono Design Study
Boston Latin School
2018

SELECT PROJECTS

Berwick Library Planning Study
Berwick, ME Programming + Conceptual Design 2022-23

Somersworth Library Planning Study
Somersworth, NH Programming + Conceptual Design 2022

Saint Anselm College Humanities Institute
Manchester, NH Construction Administration 2022-23

Brown University, Haffenreffer Museum Relocation Study*
Providence, RI Planning Study 2022

Phillips Exeter Academy, Class of 1945 Library Renewal*
Exeter, NH Project Manager, 2017 - 2021

US Department of State, US Consulate Major Rehabilitation*
Thessaloniki, Greece Project Manager, 2021-2022

Hamilton College, Burke Library*
Clinton, NY Project Manager, SD - DD, 2018

US Department of State, US Embassy Major Rehabilitation*
Athens, Greece Project Architect, 2014 - 2022

The Wheeler School, Gilder Center for the Arts*
Providence, RI Project Architect, SD - CD, 2013 - 2014

Massachusetts Institute of Technology - Simons Building *
Cambridge, MA Project Architect, 2012 - 2013

EXPERIENCE

Project Manager, Ann Beha Architects Boston, MA

Bergmeyer Associates, Boston MA

Fiedler Marciano Architecture, New York, NY

*Indicates work performed while employed at a previous firm

ETHAN A. RHILE, P.E.

Vice President



Project role

Structural Engineering Project in Charge

Summary

Ethan Rhile joined Becker Structural Engineers in September 2001, which was acquired by Thornton Tomasetti in 2019. He has extensive experience in the design of multi-story commercial buildings and industrial facilities and brings specialized knowledge of timber framing systems. Ethan has also been involved with highway bridge design and inspection, including multi-lane bridges stretching up to 26 spans. His background includes specialty field evaluation of existing parking structures, train bridge analysis, airport building design and hangar structure repair, construction shoring and retaining walls.

Education

- B.S. Civil Engineering, 1996, Pennsylvania State University

Registrations

- Licensed Professional Engineer in ME, PA

Professional activities

- Member, American Institute of Steel Construction (AISC)
- Member, Structural Engineers Association of Maine (SEAM)

Select project experience

State of Maine District Courthouse, York Judicial Center, Biddeford, ME. Structural design and construction administration for the 115,000-square-foot court facility, which combines the district courts in Springvale, Biddeford and York. The three-story building houses 10 courtrooms, a mediation suite and detention areas. It consists of a structural system with steel framing and composite beams supporting steel deck and concrete floors. The lateral system comprises steel braced frames. It is founded on conventional soil bearing foundations. The highly sustainable building is all-electric with rooftop photovoltaics.

Morse High School and Bath Regional Career & Technical Center, Bath, ME. Structural engineering and high-performance energy consulting for a new 186,000-square-foot school. The new center accommodates 650 high school students and 180 vocational students, integrating core high school curriculum studies and CTE programming into a STEAM environment. Sustainability scope included daylighting and energy analysis and environmental quality and design for optimization of architectural and mechanical systems.

Tilton School Academic Building, Tilton, New Hampshire. Structural engineering for a new three-story, 42,000-square-foot building over a day-lighted ground floor. The ground floor serves as a storage and mechanical space and a lower level entry and the upper floor houses classrooms, laboratories and offices.

Sanford Regional High School and Technical Center, Sanford, ME. Structural engineering services for a new state-of-the-art high school and technical education center to support 1,800 students. This two-story, 300,000-square-foot building includes a 900-seat performance art center. It uses steel-framed construction with steel tube columns and wide flange girders, along with steel joists and concrete slabs on metal deck. The structural team used rammed aggregate columns to improve the poor soils found on the school site.

Mid-Coast School of Technology, Region 8, Rockland, ME. Structural design of a new, two-story 90,000-square-foot facility that houses career and technical education programs such as automotive, construction, medical science, marine technology, engineering and machining. After determining renovations were more cost prohibitive, the existing building was demolished. Scope of services included providing structural information to support the project from schematic design through construction administration and special inspections.

University of Maine, Ferland Engineering Education and Design Center, Orono, ME. Structural design services, LEED consulting and sustainability consulting services for a 120,000-square-foot multi-use academic and laboratory building comprising offices, laboratories, technical spaces and classrooms. The building uses a steel and concrete structural system and is pursuing LEED Silver and a target of carbon neutral by 2040.

Orono Schools, Renovation and Addition, Orono, ME. Structural engineering services for the pre-referendum and concept design of portions of the Asa Adams Elementary School and Middle/High School that will be removed with new additions constructed at both locations. Additions include a performing arts center at the high school and a kitchen/cafeteria and administrative space at the Asa Adams Schools. The work includes providing scope and opinion of probable costs for the upcoming referendum.

Thornton Tomasetti

STEVEN R. KNOWLES

Senior Engineer



Project role

Structural Engineering Project Manager

Summary

Steven Knowles Joined Becker Structural Engineers in 2016, which was acquired by Thornton Tomasetti in April 2019. He brings more than six years of experience and has assisted in the design of bridges, commercial buildings and residential buildings. He performed bridge inspections and ratings for the MaineDOT and recently assisted with the design of the Canadian Pacific Railway Crossing Bridge replacement in Sapling Township, Maine.

Education

- B.S., Civil Engineering, 2013, University of Maine

Registrations

- Registered Professional Engineer in ME

Professional activities

- Best Practices for Precast Concrete Bridge Construction Training
- Certified Local Project Administrator, MaineDOT Sponsored Course (Expires June 30, 2023)

Select project experience

Tilton School Academic Building, Tilton, New Hampshire. Structural engineering services for a new three-story, 42,000-square-foot academic building over a day-lighted ground floor. The ground floor serves as a storage and mechanical space and a lower level entry and the upper floor houses classrooms, laboratories and faculty offices.

Rice Library, Kittery, NH. Structural engineering services for the renovation and expansion of a library built in 1889. The 10,000-square-foot addition consists of a two-story steel frame with a partially buried basement and will house new circulation and large open spaces for the main and children collections. The intricate façade features curtain wall, metal panel and brick.

Waring School, 35 Standley Street, Beverly, MA. Structural engineering services for a new 11,800-square-foot multi-purpose building for the private 6-12 school. The wood and steel design include a large gathering space that cantilevers beyond the first floor.

Portland Foreside, Master Planning and Redevelopment, Portland, ME. Structural review, condition assessment, structural design and sustainability services for the master plan of a 10-acre mixed-use waterfront development comprising residential, commercial, retail, hotel and outdoor community spaces.

Morse High School and Bath Regional Career & Technical Center

Bath, ME. Structural engineering and high-performance energy consulting for a 186,000-square-foot school. The center accommodates 650 high school students and 180 vocational students, integrating core high school curriculum studies and CTE programming into a STEAM environment.

Orono Schools, Renovation and Addition

Orono, ME. Structural engineering for the pre-referendum and concept design of portions of the Asa Adams Elementary School and Middle/High School that will be removed with new additions constructed at both locations. Additions include a performing arts center at the high school and a kitchen/cafeteria and administrative space. The work includes providing scope and opinion of probable costs for the upcoming referendum.

Central Lincoln County YMCA, Addition and Renovation

Damariscota, ME. Structural engineering for the renovation of the pre-manufactured metal building and construction of a new 14,000-square-foot addition. The renovation included removing the existing front wall entry, renovating the front portion of the building and two mezzanines and construction of a new elevated track. The addition is a two-phased approach, with the first phase housing a new entry, lobby, wellness center, locker rooms and new vertical access to mezzanines and track. The second phase adds a natatorium and support spaces.

Bates College, Chapel Restoration

Lewiston, ME. Restoration services to repair damaged, deteriorated, and non-functioning material and / or components, reduce water infiltration, stabilize existing components while respecting the chapel's historic architecture. The Chapel at Bates College was constructed circa 1913 and has granite stone masonry bearing walls with cast stone features. Scope entailed the review and evaluation of existing studies regarding the condition of the masonry walls, slate roofing and stained glass window assemblies and conducting additional field investigations to develop complete repair and restoration drawings and specifications.



Douglas Lajoie

PE, LEED AP, MCPPO

Vice President // Chief Electrical Engineer



Contact

dlajoie@ceseng.com
860 632-1682

Experience

Consulting Engineering
Services
1995-present
Prior: 9 years

Education

BS Electrical Engineering
University of New Haven
New Haven CT

Licenses

Professional Engineer
CT CA FL HI LA MD MA MI NH
NY NC RI SC TN VT VA

Memberships

ACE Mentoring Program
Building Commissioning
Association of America
(BCXA)
Illuminating Engineering
Society of North America
(IESNA)
US Green Building Council
(USGBC)

Certifications

LEED Accredited Professional
MA Certified Public
Purchasing Official (MCPPO)

Doug is a Founding Principal, Vice President and the Chief Operating Officer of CES. Confident, logical, and decisive, he leads the charge for countless projects in our portfolio. Always focused on the big picture, he guides projects in the right direction, providing oversight and ensuring that the detail work of our staff aligns with our client's overall goals. With solar panels in use at his own home, Doug is a huge proponent of sustainability and is knowledgeable about best practices in alternative energy. All this aside, he would really rather be traveling the globe or 100 miles offshore fishing for pelagic species.

RELEVANT PROJECT EXPERIENCE

Island of Nantucket | Nantucket MA

24 Buildings | Municipal Facilities Study

Monson Police + Town Hall | Monson MA

26,000 sf | New Construction | Certified Green Community

New Bedford Public Safety Building | New Bedford MA

15,000 sf | New Construction

New Britain YWCA | New Britain CT

68,000 sf | Renovation + Addition

New Canaan YMCA | New Canaan CT

59,000 sf | Renovation + Addition

Norwood Public Safety Building | Norwood MA

52,300 sf | HVAC Systems Study + Upgrade

Town of Acton | Acton MA

19 Buildings | Study | Municipal Facilities Study

Town of Brimfield | Brimfield MA

6 Buildings | Municipal Facilities Study

Town of Madison | Madison CT

18 Buildings | Municipal Facilities Study

Town of Rockport | Rockport MA

27 Buildings | Municipal Facilities Study + Masterplan

Town of Stoughton | Stoughton MA

10 Buildings + 6 Schools | Municipal Facilities Study + Masterplan

Westport Town Hall | Westport CT

Feasibility Study





Delbert Smith, Jr

PE, LEED AP
Principal // Chief Plumbing & Fire Protection Engineer



Contact

dsmith@ceseng.com
860 632-1682

Experience

Consulting Engineering Services
1995-Present
Prior: 8 years

Education

BS Mechanical Engineering
Syracuse University
Syracuse NY

Licenses

Professional Engineer
CA CT DC FL HI
KY MA MN MO NJ
NY OH PA RI VA VT

Memberships

US Green Building Council
(USGBC)

American Society of Plumbing
Engineers (ASPE)

American Society of
Heating, Refrigerating and
Air Conditioning Engineers
(ASHRAE)

National Fire Protection
Association (NFPA)

Association of Energy Engineers

Certifications

LEED Accredited Professional
Certified Energy Manager (CEM)

Del is a founding principal of CES with 30 years' experience in HVAC, plumbing and fire protection design. Although interested in both architecture and engineering from an early age, a fascination with solar thermal systems motivated him to pursue a career in Mechanical Engineering at Syracuse University. Del's strengths lie in HVAC and thermal dynamics / heat transfer systems. With a driving desire to "make things work", when ordinary projects hit a roadblock, they usually end up on Del's desk, where he welcomes the challenge of figuring it all out. As an avid outdoorsman, Del is a seasoned surfer and snowboarder. He is also a 5th degree black belt in Karate.

RELEVANT PROJECT EXPERIENCE

Canterbury Library | Canterbury CT

15,000 sf | Renovation + Addition

Greenfield Fire Station | Greenfield MA

26,000 sf | Study + New Construction

Lexington Police and Fire Station | Lexington MA

74,000 sf (combined) | New Construction

Marshfield Senior Center | Marshfield MA

11,500 sf | Addition

Northbridge Fire Station | Northbridge MA

25,700 sf | New Construction

Oak Bluffs Town Hall | Oak Bluffs MA

16,000 sf | Study & Renovation | Fossil Fuel Free, LEED, Passive House

Orleans Community Center | Orleans MA

4,850 sf | Renovation

Salem Old Town Hall & Artists Row | Salem MA

11,160 sf | Study | Artist & Event Venue

Suffield Town Hall | Suffield CT

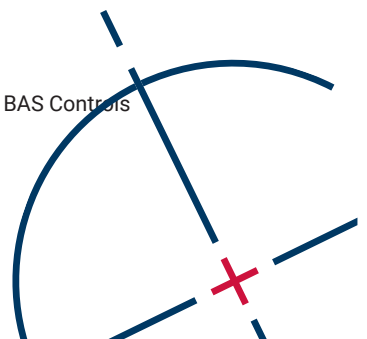
13,000 sf | Renovation

Town of South Windsor On Call Services | South Windsor CT

Town Garage: Conversion Of Garage Bays To Heated Workshop + Storage
Police Department: Replacement of 2 Boilers, Convert 2 Hot Water Heaters + BAS Controls
Replacement of cooling tower, water source heat pumps, and controls

Wilton Police Department | Wilton CT

19,700 sf | Study + New Construction





James Senatro

PE, LEED AP
Vice President // Chief Mechanical Engineer



Contact

jsenatro@ceseng.com
860 632-1682

Experience

Consulting Engineering Services
2002-present

Education

BS Mechanical Engineering
University of Hartford
West Hartford CT

MS Engineering
University of Hartford
West Hartford CT

Licenses

Professional Engineer
AL CO CT MA NH TX

Memberships

American Society of Heating,
Refrigerating and Air Conditioning
Engineers (ASHRAE)

Energy and Environmental Ratings
Alliance (EERA)

Certifications

HERS (Home Energy Rater)

Jim is truly a mechanical engineer at heart: constantly taking things apart and putting them back together again in an ongoing effort to figure out how everything works. He approaches work (and life) in a very hands-on, inquisitive manner. You'd be hard pressed to happen upon a conversation in our lunchroom where Jim is not explaining the mechanical intricacies of anything and everything (from the inner workings of a Timex watch to the complete engine overhaul of his vintage auto) or helping someone else tackle their own fix-it dilemma. After hours, you'll find Jim completing countless construction projects around the house, his toddlers in tow.

RELEVANT PROJECT EXPERIENCE

Brookfield Senior Center | Brookfield MA
3,600 sf | Renovation

CT Convention Center | Hartford CT
Study + Repairs of Snowmelt System

Dennis Fire Station | Dennis MA
14,000 sf | New Construction

Hicks Memorial Municipal Center | Tolland CT
Study + HVAC Options Analysis

Norwood Public Safety | Norwood MA
52,300 sf | Renovation | HVAC Design

Onset Fire Station | Onset MA
12,000 sf | New Construction

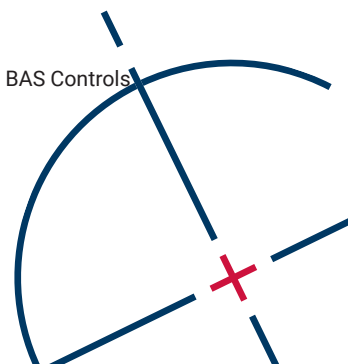
Otis Library | Norwich CT
36,000 sf | Historic Renovation

Pittsfield State Office Building | Pittsfield MA
Addition of Air Conditioning

Salem Old Town Hall & Artists Row | Salem MA
11,160 sf | Study | Artist & Event Venue

Town of South Windsor On Call Services | South Windsor CT
Town Garage: Conversion Of Garage Bays To Heated Workshop + Storage
Police Department: Replacement of 2 Boilers, Convert 2 Hot Water Heaters + BAS Controls
Replacement of cooling tower, water source heat pumps, and controls

VMP Pavilion | South Windsor CT
MEP Plans + Site Utilities



Curtis Chase

Project Manager



Contact

cchase@ceseng.com
210 686-1614

Experience

Consulting Engineering Services
2013-present
Prior: 8 years

Education

BS Electrical Engineering
Norwich University
Northfield VT

Memberships

Illuminating Engineering Society

Curtis has worked on a mix of commercial and residential projects, including renovations, existing conditions studies and recommendations. His experience spans from high end hospitality and sporting venues to residences located across the United States. Curtis is passionate about renewable energy and implements a sustainable approach into his design process.

RELEVANT PROJECT EXPERIENCE

Belmont Ice Rink | Belmont MA
Study

DCAMM DYS Facilities | Massachusetts
610,000 sf | 10 DYS Facilities | Assessment

Dennis Fire Station | Dennis MA
14,000 sf | New Construction

New Bedford Public Safety Building | New Bedford MA
15,000 sf | New Construction

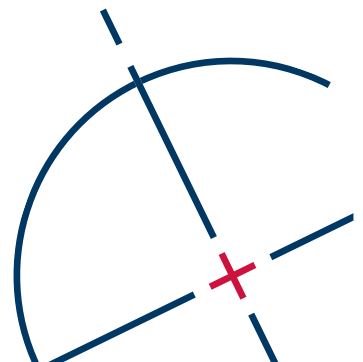
Newington Fire Station | Newington NH
Study

Orleans Fire Station | Orleans MA
7,500 sf | Study

Riverside Boat Club | Cambridge MA
Study

Seekonk Fire Station | Seekonk MA
6,000 sf | New Construction

Somersworth Public Library | Somersworth MA
8,000 sf Renovation + 3,600 sf Addition





MARC JOBIN

*OWNER'S PROJECT MANAGER
PROFESSIONAL CONSTRUCTION
ESTIMATOR*

EDUCATION & CERTIFICATIONS

Architectural Engineering BS Degree
Wentworth Institute of Technology
Boston, MA

Architectural Engineering AS Degree
NH Technical Institute
Concord, NH

Construction Project Management
Certificate
Northeastern University
Boston, MA



18 Checkerberry Lane
Bedford, NH 03110
(603) 486-6400
mjobin@comcast.net

EXPERIENCE

Over 28 years' experience as an Owner project manager and professional estimator responsible for the planning and oversight of large scale projects including; municipal, healthcare, educational, corporate and multi-residential fields. Providing advisory services for private, public, municipal, and non-profit organizations.

RELEVANT PROJECT EXPERIENCE

NEWMARKET JR/SR SCHOOL

WOLFEBORO POLICE AND FIRE SAFETY COMPLEX

PORTSMOUTH POLICE STATION

PORTSMOUTH CITY HALL FAÇADE REPLACEMENT

EXETER PUBLIC SAFETY COMPLEX

MANCHESTER DPW AND POLICE STATION

LEBANON PUBLIC SAFETY COMPLEX and FIRE SUBSTATION

HAMPSTEAD POLICE STATION

NASHUA POLICE STATION RENOVATION

BELMONT NH TOWN HALL AND POLICE STATION

MILFORD SCHOOL DISTRICT – DISTRICT WIDE ASSESSMENT

DERRY SCHOOL DISTRICT – FEASIBILITY MASTER PLAN

UNIVERSITY OF NEW HAMPSHIRE WELCOME CENTER

STATE OF NEW HAMPSHIRE PROJECTS

- Annex Building Renovation
- Second District Courthouse Renovation
- Merrimack County Probate Court Renovations
- Archives Building Addition
- Tobey Building Renovation

Great cities are not static—
they constantly change, and
they take the world along
with them... to provide new
structures that could house
new talent and new ideas.

EDWARD GLAESER

Placework

96 Penhallow Street
Portsmouth, NH 03801

603.319.8199
www.placework.studio