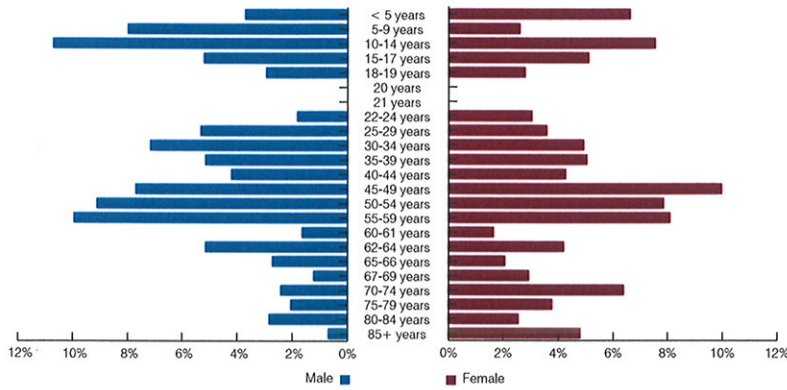


BY THE NUMBERS

BEULAH

Beulah Population

Age & Gender



MEDIAN AGE

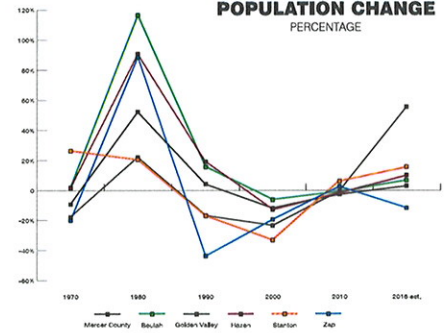
44.9

City of Beulah

- 44.5** Mercer County
- 43.4** City of Golden Valley
- 35.8** City of Hazen
- 48.6** City of Stanton
- 52.8** City of Zap
- 35.2** North Dakota

POPULATION CHANGE

PERCENTAGE



MEDIAN INCOME

\$76,042

City of Beulah

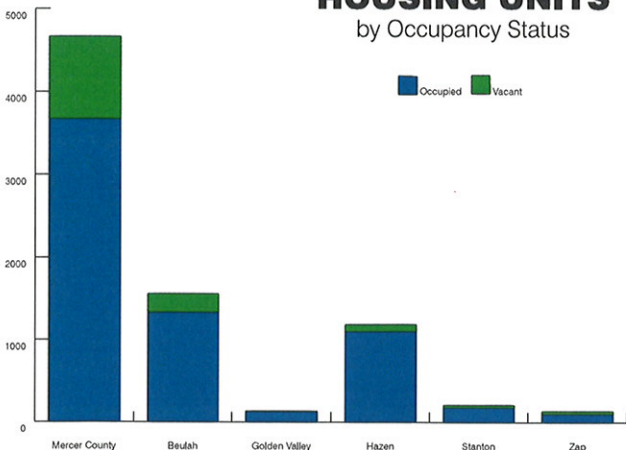
- \$73,801** Mercer County
- \$75,500** City of Golden Valley
- \$77,275** City of Hazen
- \$62,917** City of Stanton
- \$39,375** City of Zap



TOTAL HOUSEHOLDS

HOUSING UNITS

by Occupancy Status



MEDIAN HOUSING VALUE

\$157,500

City of Beulah

- \$152,200** Mercer County
- \$85,000** City of Golden Valley
- \$146,700** City of Hazen
- \$90,700** City of Stanton
- \$97,000** City of Zap

