

**Table of Contents**

**1.0 COMMUNITY DESCRIPTION ..... 1**

**2.0 ADMINISTRATIVE STRUCTURE ..... 1**

    2.1 Budget ..... 2

    2.2 Funding Sources ..... 3

    2.3 Community Volunteer Groups/Relationship with Other Organizations..... 3

**3.0 RECREATION INVENTORY ..... 4**

    3.1 Township Recreation Facilities..... 4

        3.1.1 Township Recreation Grant History ..... 7

    3.2 Area Parks and Recreation Facilities ..... 7

**4.0 DESCRIPTION OF PLANNING AND PUBLIC INPUT PROCESS..... 11**

    4.1 Community Data ..... 11

        4.1.1 Population Trends ..... 11

        4.1.2 Age Characteristics..... 13

        4.1.3 Disability Status..... 14

        4.1.4 Economic Characteristics ..... 14

        4.1.5 Area Water Features ..... 15

        4.1.6 Land Use ..... 16

        4.1.7 Local Transportation System..... 16

    4.2 Systems Approach to Planning ..... 17

        4.2.1 The Public Input Process ..... 17

**5.0 GOALS ..... 17**

    5.1 Identified Needs and Recreational Development Schedule ..... 19

- Appendix A** Maps
- Appendix B** Public Input Documentation
- Appendix C** Resolution of Adoption

## **1.0 Community Description**

Breitung Township, situated in the southwestern portion of Dickinson County, includes a land area of approximately 67 square miles (Map 1-1). Concentrated areas of development are primarily located in the southern half of the Township, in particular, around Quinnesec, in areas adjacent to the Cities of Iron Mountain and Kingsford and near the US-2 corridor.

Portions of Breitung Township are part of the Cooper Country State Forest, which lies, in part, in the western corner of the Township. Large corporations, industries and private smaller landowners supply timber for various industrial operations. Breitung Township is located next to Piers Gorge State Park, part of the Menominee River State Recreation Area. Major rivers in the Township include the Menominee River and Pine Creek. Prominent lakes include Lake Antoine, Fumee Lake, Moon Lake, Bass Lake, Spring Lake, Deer Lake and Little Badwater Lake. The use of these resources ranges from fishing and hunting, canoeing and kayaking, to power boating and water skiing.

Breitung Township officials recognize the importance of planning for recreation improvements. As the population changes, the needs of the population will change and may require different types of services than are presently provided. Staff at the CUPPAD Regional Commission were approached to assist the Township with the development of an updated 5-Year Recreation Plan.

This Recreation Plan should serve several useful purposes. It should serve as (1) a source of information, (2) a guide for correcting deficiencies including those involving accessibility, (3) an indicator of goals and policies, (4) a framework for making decisions, and (5) a means of stimulating public interest and participation in local community recreation progress.

The draft plan was reviewed by the Planning Commission at its June 14, 2018 meeting. This plan was adopted by the Township Board on June 25, 2018. A copy of this plan is on file with the Dickinson County Planning Commission and the CUPPAD Regional Commission.

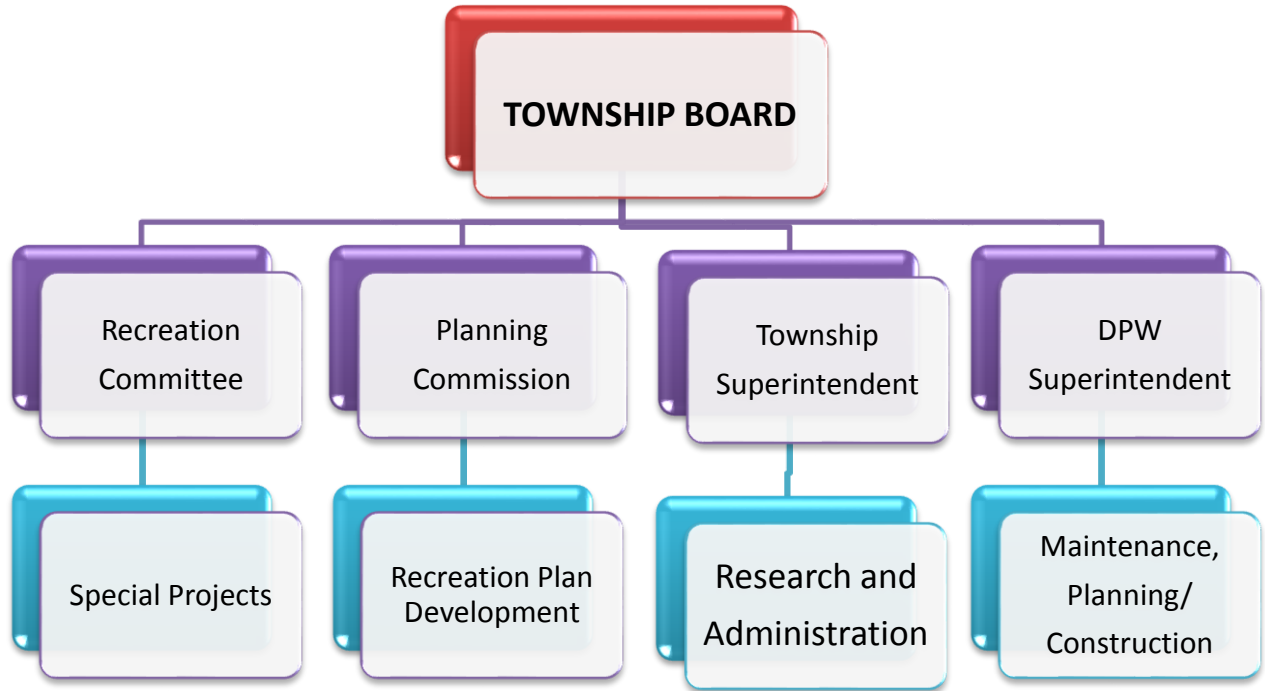
## **2.0 Administrative Structure**

Under Public Act 156 of 1917, the Breitung Township Board serves as the Board responsible for parks and recreation planning and development and fulfills the role of a recreation board. The Board meets on a regular basis to formulate, update, review and submit input on the five-year plan. The Township Board solicits public input from residents regarding the development and management of various recreation facilities at public meetings throughout the year. Though the Township does not retain a recreation director, it has significantly improved and expanded recreational facilities.

The Township Board is ultimately responsible for the maintenance of the recreation facilities. The Township Superintendent and the Township Board jointly plan and direct the work. Implementation of recreation activities and the operation and maintenance of facilities is the responsibility of the Public Works Superintendent and employees. Any needed expenses for supplies come from the Township's General Fund or donations.

Figure 2-1 shows the Township’s Parks and Recreation organizational chart.

**Figure 2-1**



**2.1 Budget**

Over the past five years, the Township Board has spent anywhere from \$95,000 to \$123,000 on recreation from the general fund; the average over the past five years has been \$103,000.

Operations and maintenance portions of the Township recreation budget, as well as capital improvements are funded through the general fund, grants and donations. The consistent amount allocated each year on recreation reflects the Township’s recognition of a continued need for recreation activities and programs as well as maintaining and upgrading existing facilities. The Township plans on allocating approximately \$90,000-\$120,000 per year from 2020-2024 for recreation. In 2019, the Township budgeted \$118,570 for recreation.

**2.2 Funding Sources**

Breitung Township funds recreation mainly through general fund monies, donations and grants.

**2.3 Community Volunteer Groups/Relationship with Other Organizations**

The Township provides and maintains recreational facilities for users but does not provide programming. Those recreational uses that require organizing and scheduling are guided by community volunteers and other groups. Township officials maintain an oversight role to insure equitable usage among various groups and that timely and necessary maintenance is completed. Facilities are open without fee to the general public within established hours of operation. The Township has not established any formal or informal relationships with private

or public organizations for the maintenance or operation of parks and recreation in the Township.

Recreational programming is carried out by many public and private groups in Breitung Township. The Township has had a long and successful relationship with both community and school organizations. The dominant source of recreational programming in the Township has been through the school system. Each school system provides some level of programming, with the majority organized by the Iron Mountain-Kingsford Community Schools Program. The Community Schools Program offers a diverse array of organized recreational activity. Some private groups also provide for programming such as the softball association and hockey association. The bowling alleys in Iron Mountain, Norway and neighboring Niagara, WI program their respective leagues throughout the year. A new soccer complex with two fields was completed in 2010, located on Pine Mountain Road; programming is provided by the Soccer Association for Youth (SAY) and Northern Stars Soccer Club. The Township operates a baseball field, in conjunction with the Little League, Babe Ruth League and Softball League, who assist with ballfield maintenance. UP Veterans Memorial Park is maintained by area veterans.

The Dickinson-Iron Community Services Action Agency provides five senior citizen centers in the County. Rural centers with limited recreational activities are location in Felch and Sagola. The Norway Center, Brown Street Center in Iron Mountain and the Breen Street Center in Kingsford are the other Senior Centers. The centers provide a wide range of recreational programming and activities of a partially recreational nature for seniors. The community school has cooperated in the past in providing educational and recreational programs in crafts in the past. The schools have also organized parties for seniors in the past. The senior meal programs offered by the centers are also considered social-recreational events for those that use the centers.

### **3.0 Recreation Inventory**

#### **3.1 Township Recreation Facilities**

Throughout the Township there are several recreational facilities used by both residents and non-residents. The facilities are listed in Table 3-1 below and identified on Map 3-1. Township owned facilities have been given an accessibility assessment rating and the size of the facility is listed.


Township owned facilities were evaluated for accessibility using the following guidelines:

- 1 = none of the facilities/park areas meet accessibility guidelines
- 2 = some of the facilities/park areas meet accessibility guidelines
- 3 = most of the facilities/park areas meet accessibility guidelines
- 4 = the entire park meets accessibility guidelines
- 5 = the entire park was developed/renovated using the principals of universal design

<b>Table 3-1 Existing Recreation Facilities within Breitung Township, Public</b>			
<b>Name</b>	<b>Description</b>	<b>Ownership</b>	<b>Type</b>
Chuck Nelson Baseball Field 	Little League regulation baseball field (2.8 acres) <b>Accessibility Assessment = 1</b>	Township	Community park
Deer Lake Park	Playground (0.5 acres) Natural Area (5 acres) <b>Accessibility Assessment = 1</b>	Township	Mini park / Natural Area
East Kingsford Recreation Area 	3.2 acres, playground equipment, baseball field, 1 outdoor basketball court, multi-purpose open field, illuminated ice rink, warming shelter, and multi-purpose room (36' x 40' recreation building) (3.2 acres) <b>Accessibility Assessment = 2</b>	Township	Community park
Forgette Field 	Babe Ruth regulation baseball field (1.5 acres) <b>Accessibility Assessment = 1</b>	Township	Community park

<b>Table 3-1 Existing Recreation Facilities within Breitung Township, Public</b>			
Name	Description	Ownership	Type
<p>Quinnesec School Park/Playground</p> 	<p>Playground equipment, tennis court, 1 outdoor basketball court, multi-purpose open field, soccer field, skateboard park, and an ice rink and warming shelter/rest rooms/storage facility, pavilion (6.8 acres) *The Township received a MDNR grant in 1985 in the amount of \$13,253. The project was closed out successfully. <b>Accessibility Assessment = 2</b></p>	<p>Township</p>	<p>Community park</p>
<p>Eskil Memorial Park</p> 	<p>8 acres, hiking (8.0 acres) <b>Accessibility Assessment = 1</b></p>	<p>Township</p>	<p>Community park</p>
<p>Menominee River Waterway</p> 	<p>Fishing, Whitewater with Class IV rapids. Part of Piers Gorge and the Menominee River State Recreation Area <b>Accessibility Assessment = 1</b></p>	<p>State</p>	<p>State park &amp; waterway</p>

<b>Table 3-1 Existing Recreation Facilities within Breitung Township, Public</b>			
<b>Name</b>	<b>Description</b>	<b>Ownership</b>	<b>Type</b>
Lake Antoine Park / Campground 	Fishing, Camping, Swimming, Boat Launches <b>Accessibility Assessment = 1</b>	County	Community park
Lake Fumee Natural Area 	Equestrian friendly, Blue Ribbon Trout fishing, Rock Dam, ATV/Snowmobile Trails, Canoe/Kayak launches, Boat landings. <b>Accessibility Assessment = 1</b>	County	Nature reserve
Boating Access Site – Bodelin Menominee River 	Dock, Boat Launch, Fishing, Restroom	State	Boat Launch
Bass Lake Access Site 	Boat Launch, Fishing, Restroom, Picnic Table	State	Boat Launch

<b>Table 3-1 Existing Recreation Facilities within Breitung Township, Public</b>			
<b>Name</b>	<b>Description</b>	<b>Ownership</b>	<b>Type</b>
Fumee Falls Roadside Park 	Waterfall, walking trail, restrooms, picnic tables, grills	County	Mini-Park

Private recreation facilities located within Breitung Township are listed in Table 3-2.


<b>Table 3-2 Existing Recreation Facilities within Breitung Township, Private</b>	
<b>Name</b>	<b>Facilities</b>
Summer Breeze Campground	30 wooded acres with a private pond, 100 campsites, hot showers, laundry, dumping station, swimming pool, fireplaces, and picnic tables
Duvall Lakeside Resort	Individual rental cabins
Edgewater Resorts and Country Log Cabins	Individual rental cabins, private swimming beach, boat and motor rental
Timberstone Golf Course	18-hole golf course, and driving range
Rivers Bend Campground	150 sites, electricity, sewer hookups, showers, and sanitary station
Twin Falls Park (WEPC Wilderness Shores Site 7)	Adjacent to Badwater Lake, 2 boat ramps
Big Quinnesec Falls Park (WEPC Wilderness Shores Site 6)	Boat launch
Pine Mountain Lodge 	14 slopes and trails, with chair lifts and rope tows, overnight lodging and dining, Eagle Mountain golf course and cross-country ski trail

Table 3-2 Existing Recreation Facilities within Breitung Township, Private	
Name	Facilities
Soccer Complex 	Two soccer fields on Pine Mountain Road with turf, underground irrigation system, lighted scoreboard, restrooms, concession area and pavilion

**3.1.1 Township Recreation Grant History**

Breitung Township has received one MDNR Grant for a recreation project at the Quinnesec Recreation Area. The facility and grounds are well maintained and are currently in good condition.

- Quinnesec Recreation Area-#26-01416
  - Project Year: 1985; Grant Amount: \$13,252.93
  - The project was to install restrooms for two existing ballfields and an existing soccer field.
  - A warming area for an outdoor ice rink was to be completed as well as the installation of a LWCF sign.
- Prosperous Places Grant
  - Project Year: 2017/2018
  - Grant Amount: \$5,000 with a 1:1 match
  - Grant donation was used to install way-finding signs to the Quinnesec Recreation Complex as well as purchase seasonal light-pole signs.

**3.2 Area Parks and Recreation Facilities**

Public recreation facilities found at the Woodland Elementary and Middle School/High School Complex and are described in Table 3-3.

Table 3-3 Breitung Township School District Recreational Facilities	
Middle School/High School Complex	Woodland Elementary School
<ul style="list-style-type: none"> <li>• 8 tennis courts</li> <li>• 2 outdoor basketball courts</li> <li>• 2 gymnasiums</li> <li>• 2 softball fields</li> <li>• open field for general physical education</li> <li>• 2 indoor basketball courts</li> <li>• 3,000-seat stadium</li> <li>• 605-seat auditorium</li> <li>• parking</li> </ul>	<ul style="list-style-type: none"> <li>• 2 softball fields</li> <li>• 2 soccer fields</li> <li>• 2 outdoor basketball courts</li> <li>• indoor basketball court</li> <li>• gymnasium</li> <li>• playground</li> <li>• parking</li> </ul>

Public and private recreational facilities located in adjacent communities are included in Table 3-4.

<b>Table 3-4 Area Recreational Sites</b>	
Site Name	Features
<b><i>City of Iron Mountain</i></b>	
City Park	Bocce courts, 18-hole disc golf course, benches, picnic tables, pavilion, volleyball courts, playground equipment, water, restroom buildings, log shelter, stone fire stove, log park ranger building, soccer-football field, tennis courts, walking trail, enclosed deer yard, illuminated ice rink, sledding area, cross-country ski trail, snowmobile trail access site, dog park, and off-street parking (69.2 acres)
Westside Field	Bleachers, off-street parking area, batting cage, dugouts, benches and playing field (9.3 acres)
Crystal Lake Park	Soccer field, playground equipment, picnic table and volleyball court (5.5 acres)
Stockbridge Avenue Park	Illuminated ice rink (1.0 acres)
Forest Street Playlot	Bench and playground equipment (0.5 acres)
Jess Tidmore Memorial Courts	Bench and tennis courts (0.3 acres)
Pewabic Playfield	Bench, picnic table, and playground equipment (5.0 acres)
Eastside Recreation Complex	Ball field, dugouts, bench, tennis courts, storage shed, water, ice rink and off-street parking (5.0 acres)
Mountain View Ice Arena	Indoor artificial ice complex and off-street parking area (5.0 acres)
Ranger Field	Ball field, dugouts, spectator seating, batting cage and off-street parking (1.5 acres)
Northside Ball Field	Ball field, dugouts, seating, water, play equipment (7.5 acres)
West Lake Antoine Launch/Park	Launching piers and off-street parking (4.5 acres)
Hercheids Campo Sportivo	Benches, tennis courts, and play equipment (1.5 acres)
East Elementary School	Bike racks, benches, gymnasium, outdoor basketball court, and play equipment (7.5 acres)
Stanton Street Center	Play equipment (0.2 acres)
North Elementary School	Picnic tables and benches, basketball hoops, hard surface play area, play equipment and off-street parking (14.0 acres)
Iron Mountain High School	Physical education building, indoor basketball court, auditorium, and indoor stadium (3.8 acres)

<b>Table 3-4 Area Recreational Sites</b>	
Site Name	Features
Central Elementary and Junior High schools	Gymnasium, outdoor basketball court and hard surface play area (3.0 acres)
Dickinson Area Catholic School	Hard surface play area, play equipment and outdoor basketball court (0.2 acres)
Iron Mountain Stadium	Track, football field, restroom building, concession stand, ticket booth, practice field, grandstand w/press box, and storage building (5.0 acres)
Michigan Welcome Center	Tourist information and other services
<b>City of Kingsford</b>	
LoDal Park	Ball ballfield, tennis courts, restrooms, picnic tables, parking and facilities for football, horseshoes, basketball, skateboarding, and fitness (21 acres)
Cowboy Lake Park	Bathhouse, pavilion, swimming, boating, fishing, picnicking (3.5 acres)
Menominee River Recreation Area	Parking, portable restrooms, picnicking, boat launch, picnic shelter, restrooms (6.5 acres)
Balzola Field	Baseball and soccer facilities with perimeter fencing and dugouts (4.0 acres)
Ford Park	Play equipment, tennis court, open space (5.6 acres)
Breen Street Playground	Playground equipment, open space with a hill used for winter time sledding (1.1 acres)
Triangle Park	Play equipment and open play field (1.1 acres)
Fulton Street Park	Open space used for winter ice skating and summer open play field (0.5 acres)
Lyman Street Park	Open play field (0.5 acres)
Beech Street Park	Lighted ice rink, ball field and open space (1.5 acres)
Olympic Street Park	Benches and play equipment (0.35 acres)
Waverly Street Park	Open play area and wintertime skating
<b>Norway Township</b>	
East Vulcan Playground	Picnic area, basketball court, baseball field, playground equipment, volleyball court, multi-purpose area and parking
Marion Park and Norway Recreation Complex	Picnic area, playground equipment, baseball fields, picnic pavilions, golf course, soccer fields, archery range, tennis courts, restrooms, horseshoe courts (180 acres)
Lake Mary Park	Picnic area with tables, swimming beach with 400 feet of water frontage, a bathhouse, playground equipment (6.2 acres)

<b>Table 3-4 Area Recreational Sites</b>	
Site Name	Features
Hanbury Lake Park	Restrooms, parking, playground equipment, picnic area, boat landing, swimming beach, recreational field (28 acres)
Dickinson County Fairgrounds	Site of the annual county fair held Labor Day weekend (77 acres)
Carney Lake Campground	State-owned campground along the western shore of Carney Lake with camping sites, swimming beach, fishing, bathhouse, restroom, parking, boat launch, well, pathway (8.5 acres)
Rock Lake Public Access Site	Gravel surface boat launch, parking, scenic trail, toilet, camping spaces, (80 acres)
Norway Reservoir Public Access Site	Hard surface boat launch, parking, toilets, courtesy pier
Merriman East Pathway	Ski/hiking trails within the Cooper Country State Forest trails are 3.3 and 5.6 miles
Lake Antoine Trail	10-mile snowmobile trail
Menominee River State Recreation Area - Piers Gorge	Scenic river rapids and cascade and hiking trail
<b>Felch Township</b>	
Solberg Lake (MDNR Access Site)	Gravel-surfaced ramp, toilets, and parking area
Six Mile Lake (MDNR Access Site)	Hard-surfaced ramp, toilets, and parking area
Gene's Pond State Forest Campground and MDNR Access Site	14 sites, no swimming, scenic area around the flooding, hard-surfaced ramp, toilets, and parking area
<b>Sagola Township</b>	
Silver Lake (MDNR Access Site)	Hard-surfaced ramp, toilets, and parking area
Edey Lake (MDNR Access Site)	Gravel-surfaced ramp, toilets, and parking area
Sawyer Lake	Fishing, boat launch, 30 campsites with water and toilets, swimming.
<b>Waucedah Township</b>	
Waucedah Township Recreation Site	Baseball field, basketball court, and football/soccer field
Lake Mary (MDNR Access Site)	Hard-surfaced ramp, toilets, and parking area
Hamilton Lake (MDNR Access Site)	Hard-surfaced ramp, courtesy pier, toilets, and parking area

<b>Table 3-4 Area Recreational Sites</b>	
Site Name	Features
Bergen Backwater (MDNR Access Site)	Hard-surfaced ramp, toilets, and parking area
West Branch Sturgeon River (MDNR Access Site)	Hard-surfaced ramp, toilets, and parking area
WEPC Wilderness Shores Site 11 (Sturgeon River near Power Dam)	Boat launch, toilets, and parking area
<b>City of Norway</b>	
North Nelson Street Playlot	Playground equipment, and basketball court
Ice Rink	Multi-purpose open field, illuminated ice rink, and warming shelter
Lake Mary	300 feet water frontage
City Hall	Band shell
Strawberry Lake Area	100x400 ft. treated wood multi play apparatus, walking trail, two fishing piers, picnic tables, and benches
Norway High and Elementary School	Parking, playground equipment, tennis courts, indoor basketball court, multi-purpose open field, gym, meeting rooms, and football field
Oak Crest Golf Club	18-hole golf course and driving range
<b>Breen Township</b>	
Stromberg Park	Campsites, Boat launch, Beach/Swimming area, Picnic area, Toilet
Peterson Park	Picnic area, Ice skating rink
Hardwood Hall Recreation Center	Baseball, Outside basketball court, Horseshoe, Play structure

## 4.0 Description of Planning and the Public Input Process

### 4.1 Community Data

For any planning endeavor, careful attention must be given to the analysis of population trends and projections. Such an analysis is necessary to determine existing or future needs based on the characteristics of the area's population. Population analysis assists with determining the direction of local capital improvements and related expenditures. For recreation planning, population data is also useful when applying recreation standards to a community.

#### 4.1.1 Population Trends

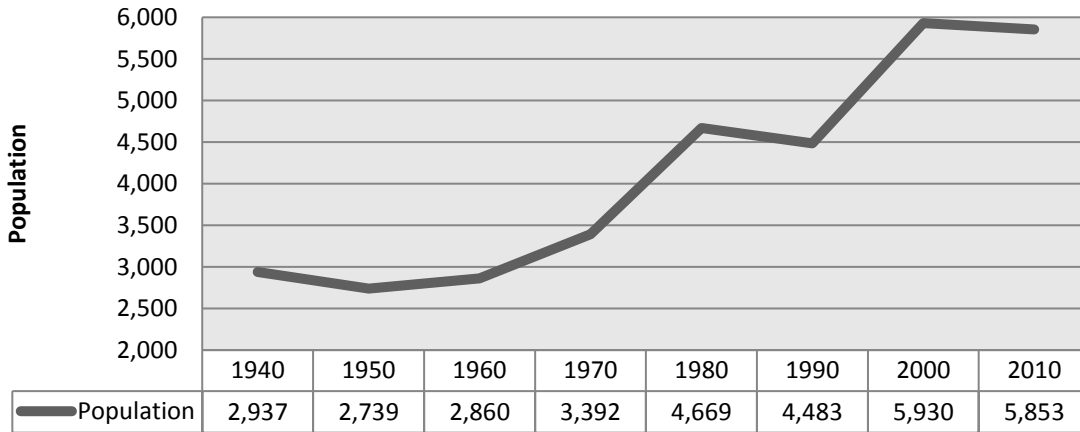
Population figures for all Dickinson County jurisdictions from 1990 to 2010 are presented in Table 4-1. The Township's population increased from 5,483 in 1990 to 5,853 in 2010. This population increase of 6.7 percent compares to a 2.5 percent decrease for the County overall.

<b>Table 4-1 1990-2010 Populations for Dickinson County Jurisdictions</b>						
Unit of Government	Population				Population Change 1990-2010	
	2015	2010	2000	1990	Number	Percent
<b>Breitung Township</b>	<b>5,831</b>	<b>5,853</b>	<b>5,930</b>	<b>5,483</b>	370	6.7%
Breen Township	564	499	479	464	35	7.5%
Felch Township	747	752	726	705	47	6.7%
City of Iron Mountain	7,571	7,624	8,154	8,525	-901	-10.6%
City of Kingsford	5,104	5,133	5,549	5,480	-347	-6.3%
City of Norway	2,820	2,845	2,959	2,910	-65	-2.2%
Norway Township	1,591	1,489	1,639	1,325	164	12.4%
Sagola Township	991	1,106	1,169	1,166	-60	-5.1%
Waucedah Township	748	804	800	693	111	16.0%
West Branch Township	45	63	67	80	-17	-21.3%
Dickinson County	26,012	26,168	27,472	26,831	-663	-2.5%

Source: U.S. Bureau of the Census for years cited.

Over the 70 year period of 1940 to 2010, Breitung Township experienced a population increase of 99.3 percent (Figure 4-1). During this time period, actions of the Ford Motor Company severely affected the population base of the county as operations were scaled back before a complete shut down in 1951. This was an economic event felt throughout the County. For Breitung Township, this shutdown is reflected as a 6.7 percent drop in population between 1940 and 1950. In subsequent decades Breitung Township has seen steady population increases, particularly with double-digit increases during the 1960's, 1970's and 1980's. The largest percentage increase was recorded in the 1970-1980 time period with a 37.6 percent increase. The start-up of the Champion International (now Verso Corporation) paper mill can account for some of the increases during the 1970's and the 1980's.

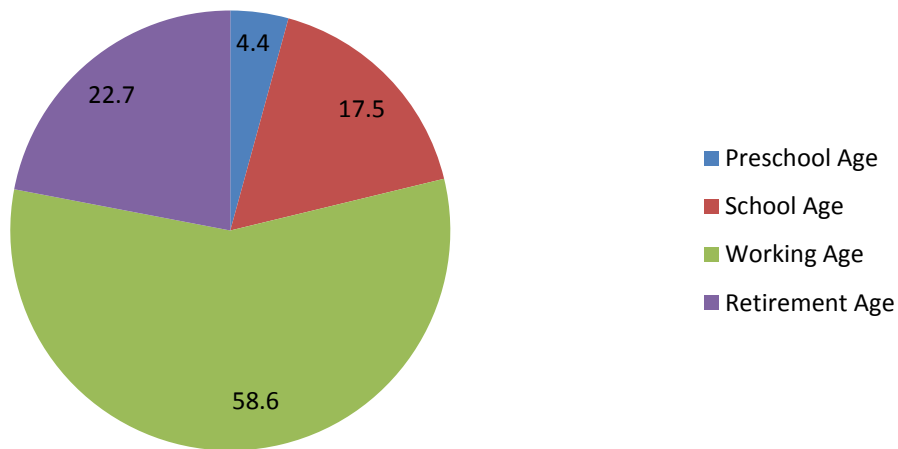
**Figure 4-1  
Breitung Township  
Population Trends 1940-2010**



**4.1.2 Age Characteristics**

The age of the residents of an area may indicate emerging needs for recreational facilities. The median age of Breitung Township residents in 2010 was 48.7, slightly higher than the median age of Dickinson County (45.4). As shown in Figure 4-2 below, over 58 percent of Breitung Township residents are in the working age category (20-64 years of age).

**Figure 4-2  
Breitung Township, Age Distribution, 2010**



#### **4.1.3 Disability Status**

Residents with disabilities may face barriers to good health. There are many types of disabilities, such as those that affect a person's hearing, vision, movement, learning, communicating, or social relationships. Disabilities can affect different people in different ways. It is a goal of the Township to promote and sustain participation by people with disabilities in inclusive recreation activities and resources.

Data from the American Community Survey 5-Year Estimates from 2006-2010 regarding disability status is not available for Breitung Township. Decennial census data from 2000 indicates that there are 69 persons age 5 to 20, 497 persons age 21 to 64 and 351 persons 65 and older with a disability; this indicates that approximately 15 percent of Township residents reported having a disability.

#### **4.1.4 Economic Characteristics**

The economic history of Breitung Township, like that of the region, is closely related to natural resources and features. The historical development of the Township goes back to the days of iron ore exploration. Breitung Township lies right in the heart of the historic Menominee Iron Range, discovered in 1873. This range contained a total of 47 mines stretching from Waucedah in the east, to Crystal Falls in neighboring Iron County. Among the mines which once operated in Breitung Township were the Quinnesec, Indiana, Keel Ridge, Cundy, Vivian, Illinois, Cuff, Forest, and Traders Mines.

Extensive iron ore mining along the Menominee Iron Range was a major economic activity beginning in the late 1800s until about 1945. Area paper mills, sawmills and manufacturers of wood products located in the area to be nearby a ready source of raw material. Hydro projects were developed at several points along the Menominee River to meet the electrical power demands.

Breitung Township's mineral resources include iron ore, sand, and gravel. The East Menominee Range runs through Breitung Township. Although there are no active mines at this time, explorations have been undertaken. Historically, sand, gravel and marble have also been extracted and marketed in Dickinson County. In Breitung Township, Gundlach-Champion, Inc., Lindberg & Sons, Midwest Asphalt and Gravel, Morin Excavating and Bacco are the largest producers of sand and gravel.

As with residential development, the highest concentration of commercial land use is located within the Iron Mountain-Kingsford-Norway urban corridor. Iron Mountain and Kingsford are the primary providers of commercial services to Dickinson County and beyond. The Midtown Mall, anchored by Super One, and major retail stores (Walmart, Home Depot and Shopko) provide retail shopping. A variety of general and specialized retail establishments are located along the highway corridors. The majority of the urban area's retail and service establishments are located in Norway & Iron Mountain downtown, along U.S. 2/141 (Stephenson Avenue in Iron Mountain), M-95 (Carpenter Avenue in Kingsford), and in Norway's Main Street.

The commercial development along US-2/141 extends outside the City of Iron Mountain into Breitung Township to both the north and east. In fact, the highway corridor from Iron Mountain through the City of Norway to the community of Vulcan contains a significant amount of commercial development. Most of this development outside the cities consists of businesses which need large lots, and benefit from highway exposure, such as recreational vehicle dealers, car dealers, etc. A movie complex, large home improvement retail store, large auto dealership and the Dickinson County Hospital have been developed along this corridor. Commercial expansion along US-2 east of Quinnesec is limited to some extent by the large amount of property owned by Verso Corporation. However, there are still sites available for development including the Township's industrial park.

#### **4.1.5 Area Water Features**

Breitung Township's water features include lakes, rivers and streams. Surface waters from the Township ultimately flow into Lake Michigan, via the Menominee River. Lake Antoine and Fumee Lake, among the largest and most important lakes in the County, are located in Breitung Township. Other important lakes in the Township include Moon Lake, Bass Lake, Spring Lake, Deer Lake and Badwater Lake. Lake Antoine is surrounded by a combination of residential and recreational uses and undeveloped wooded and open areas. Fumee Lake, which once served as the municipal water supply for the City of Norway and the community of Vulcan, has been maintained in a relatively pristine condition, and is surrounded by public land. Fumee Lake is also closed to fishing to preserve the unique fishery which developed during the many years it was closed to all public access. The other lakes in the Township are primarily surrounded by private land.

Lakes and rivers can serve as physical barriers to certain types of development, by limiting the growth of communities and/or the transportation facilities which serve them. For example, the Iron Mountain/Kingsford/Norway urban corridor is bounded by the State of Wisconsin to the west and south, across the Menominee River, but there are only four river crossings (US- 2, US- 8, US-141 and M-95) along this approximately 20-mile stretch. The river also presents a natural barrier preventing the expansion of the City of Kingsford to the south and west. Conversely, the presence of water features often encourages other types of development, such as waterfront residential, or industries which require large volumes of water. There is ATV Crossing/Connectivity to Wisconsin ATV/Snowmobile and Non-Motorized Trails.

The Menominee River begins at the confluence of the Brule and Michigamme Rivers about 20 miles upstream from the City of Kingsford and empties about 60 miles downstream into the Bay of Green Bay. The Menominee River Basin is about 125 miles long and includes portions of ten counties in the two-state area. It includes Twin Falls/Badwater Lake. There are nine (9) hydroelectric projects licensed by the Federal Energy Regulatory Commission (FERC) along the course of the river. Additional dams are found along other rivers of the basin. There is access to the Menominee River at Hydraulic Falls with a boat launch and fishing below the dam.

Cowboy Lake covers approximately 45 acres and is located near Ford Airport. Before completion of the Ford Dam in 1924, the lake was described as very small. Backwaters of the

hydroelectric project enlarged the lake and connected it to the Menominee River. It has a boat launch and canoe /kayak portage.

#### **4.1.6 Land Use**

The land use patterns observed in the Township are important considerations in planning for the recreational needs of the community. Breitung Township's land use pattern has been shaped by the presence and exploitation of natural resources, by transportation arteries and water features. Breitung Township's land use pattern has been shaped by the presence and exploitation of natural resources, including iron ore and timber; by water features and other natural features; and by changing housing patterns. The Menominee Iron Range, located partially within Breitung Township, and the Felch Iron Range to the north and east produced millions of tons of iron ore from the 1870s until 1981, when the Groveland Mine closed. Logs from Dickinson County's vast forests were floated down the Menominee River to be milled into lumber and shipped throughout the Midwest, and an ample supply of wood was crucial to the location of the Ford plant in Kingsford from the 1920s until 1951. Several logging and lumber companies operated in Dickinson County from the 1880s until the forests were depleted. As the mining boom was beginning to fade in the 1920s, a new venture began which was to influence local economic and land use patterns for years to come. The Ford Motor Company began construction of a large industrial complex in what is now the City of Kingsford in 1920, utilizing the abundant lumber of the area to make wooden automobile body parts.

A major land use in the Township is forested lands. Forest: Although the majority (66.0 percent) of Breitung Township's 43,421 acres is forested, this proportion is the lowest of any Township in Dickinson County. Only the three cities in Dickinson County have a lower percentage of forestland, reflecting the development adjacent to the urban area in Breitung Township. There are limited agricultural uses in the Township as well. The population is centered in the southern tier of the Township, around the community of Quinnesec and near the Cities of Iron Mountain/Kingsford.

#### **4.1.7 Local Transportation System**

US-2 is the route that links the township with the eastern and western portions of the Upper Peninsula. The highway runs from Interstate 75 near the City of St. Ignace, through the City of Ironwood, with the western terminus at Everett, Washington on the west coast. A multi-lane stretch of US-2/141 runs from the City of Norway, through the community of Quinnesec, and then to the City of Iron Mountain.

US-141 is an important north/south highway corridor in the west-central portion of the Upper Peninsula. It runs from the US-41/M-28 intersection in Baraga County, through the cities of Crystal Falls and Iron Mountain, then to the City of Niagara, WI and beyond. Within the Iron Mountain/Kingsford urban area, it runs north from Niagara, WI, through a small portion of south-central Breitung Township, connects with US-2 just west of the community of Quinnesec, and then runs with US-2 through the City of Iron Mountain. In Iron Mountain, US-141 and US-2 merge with M-95 in the central portion of the City, and separate from M-95 about one mile north of Iron Mountain and runs westerly into Spread Eagle, WI.

M-95 is an important north/south state trunk line that links the township with the Marquette County cities of Ishpeming, Negaunee, and Marquette. From the southern terminus at the Wisconsin-Michigan border to the northern terminus at the US-2/41 intersection in Marquette County near Champion, the highway extends through the cities of Kingsford, Iron Mountain and the community of Merriman in Breitung Township. The highway is very important for the hauling of pulpwood and logs to industries in both the Iron Mountain/Kingsford urban area and the Sagola/Channing area.

The Ford Airport, located in the northwestern portion of the City of Kingsford and in Breitung Township, along Woodward Avenue, is one of six airports in the Upper Peninsula that provide commercial passenger air service. It is also the largest freight airport in the U.P.

## **4.2 Systems Approach to Planning**

The systems approach to planning incorporates information gained from citizen surveys and detailed recreation inventories to determine the recreation needs of a community.

### **4.2.1 The Public Input Process**

The Michigan Department of Natural Resources requires that two methods be used to incorporate public input into the recreation planning process. Breitung Township mailed out surveys on recreation to residents in the fall of 2017. A copy of the survey and a summary of the results can be found in Appendix B. The Breitung Township Planning Commission reviewed the Plan at their June 14, 2018 regular meeting and forwarded to the Township Board. The availability of the draft plan for review purposes was advertised in the Iron Mountain Daily News, posted on our website and made available in the Dickinson County Library on May 14, 2018. The Breitung Township Board accepted public comment at their regular meeting held June 25, 2018, and passed a resolution adopting the 5-Year Recreation Plan. A copy of the advertisement and minutes from the Breitung Township Board meeting can be found in Appendix B.

## **5.0 GOALS AND POLICIES**

The goals that follow are guides for recreation related decision making. Consideration and observance of recreation policies should ultimately lead a community toward the attainment of its short and long term goals.

Specific development projects and programs should initially be evaluated with respect to the recreation goals and then in terms of the proposal's contribution to the recreation system of Breitung Township. Goals developed by the Breitung Township Board are listed below.

**Goal #1: Provide a wide variety of recreational opportunities to all Breitung Township residents and non-residents visiting the area.**

**Policies:**

- Projects should be easily accessible to all residents.
- Whenever or wherever possible, facilities should be for multiple and/or year-round use.
- Proposed projects should eliminate identified recreational deficiencies as described in this plan.
- Programs should be developed when feasible for the use of recreational facilities.
- The Township should make use of state and federal assistance programs to acquire and develop recreation areas and facilities.

**Goal #2: Make maximum use of the recreational opportunities offered by the area's natural environment.**

**Policies:**

- Facilities should be designed to complement and preserve the surrounding natural quality of the area.
- Whenever possible, the Township, private interests and adjacent units of government should coordinate the development of recreation facilities and programs.
- When feasible, existing facilities should be upgraded before new ones are built.
- Long-term maintenance should be ensured for all facilities.
- The Township, concerned organizations and individuals should develop programs and incorporate designs to minimize vandalism.

### 5.1 Identified Needs and Recreational Development Schedule

The Breitung Township Board, through the recreation development schedule, planned a number of necessary and valuable recreation projects to enhance the quality of life for all demographic groups.

The recreation development schedule highlights the Township’s top priorities as follows:

<b>Table 5-1</b> <b>Breitung Township Recreation Development Schedule</b> <b>All Years;</b> <ul style="list-style-type: none"> <li>• Analyze all Recreational Facilities for Universal Design opportunities</li> <li>• Eurasian Milfoil --\$5,000/year</li> </ul>		
Year	Project Name	Cost (Funding Source)
2020	ATV Scramble Park	\$300,000
2020	Plant Trees as Buffer for ATV Scramble Park	\$30,000
2020	Analyze Eskil Park and Deer Lake Park for potential development for recreational opportunities	\$5,000 (\$2,500 / park)
2020	East Kingsford Playground Chips	\$6,000
2020	East Kingsford Playground – Paint/Repair equipment	\$2,000
2020	Ballfield Netting Replacement	\$5,000
2020	Splash Pad: With ADA parking and access	\$130,000
2021	ATV Trail System	\$100,000
2021	Eskil Park Development (benches, water station, hiking paths, etc.	\$30,000
2021	Quinnesec Playground Chips	\$6,000
2021	Quinnesec Playground – Paint/Repair equipment	\$2,000
2021	Bicycle Way-Station on Iron Belle Trail	\$30,000

**Table 5-1  
Breitung Township Recreation Development Schedule  
All Years;**

- Analyze all Recreational Facilities for Universal Design opportunities
- Eurasian Milfoil --\$5,000/year

Year	Project Name	Cost (Funding Source)
2021	Ballfield Turf Planing, all fields	\$9,500
2022	Deer Lake Park Development walking trails, benches, better playground equipment	\$30,000
2022	Enhance Veteran's Memorial Park in conjunction with local Veterans' Groups	\$10,000
2022	Disc Golf Course	\$40,000
2022	Link all Canoe/Kayak Portages; Create a Regional Water Trail	\$30,000
2022	Disc Golf Practice Baskets Added to Recreation Areas around Township	\$5,000
2022	Irrigation for all Ball Fields	\$30,000
2023	Quinnesec Little League Field Lighting	\$90,000
2023	Tennis Court Resurfacing	\$12,500
2023	Walking/Biking Paths Connecting with Neighboring Trails	\$300,000
2024	Dog Park	\$90,000
2024		

**APPENDIX A**

**MAPS**

**APPENDIX B**  
**PUBLIC INPUT DOCUMENTATION**

**APPENDIX C**

**RESOLUTION OF ADOPTION**