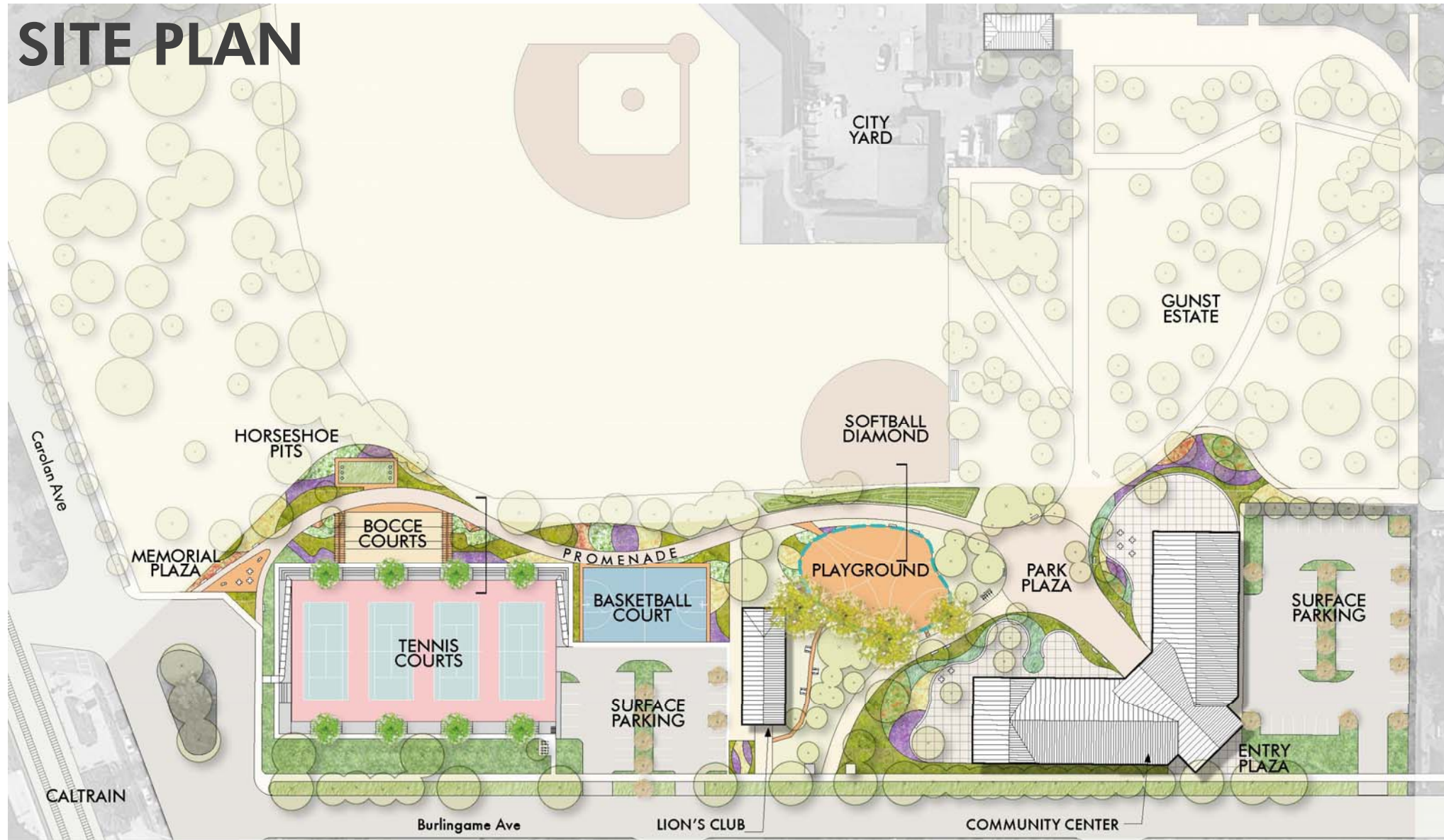


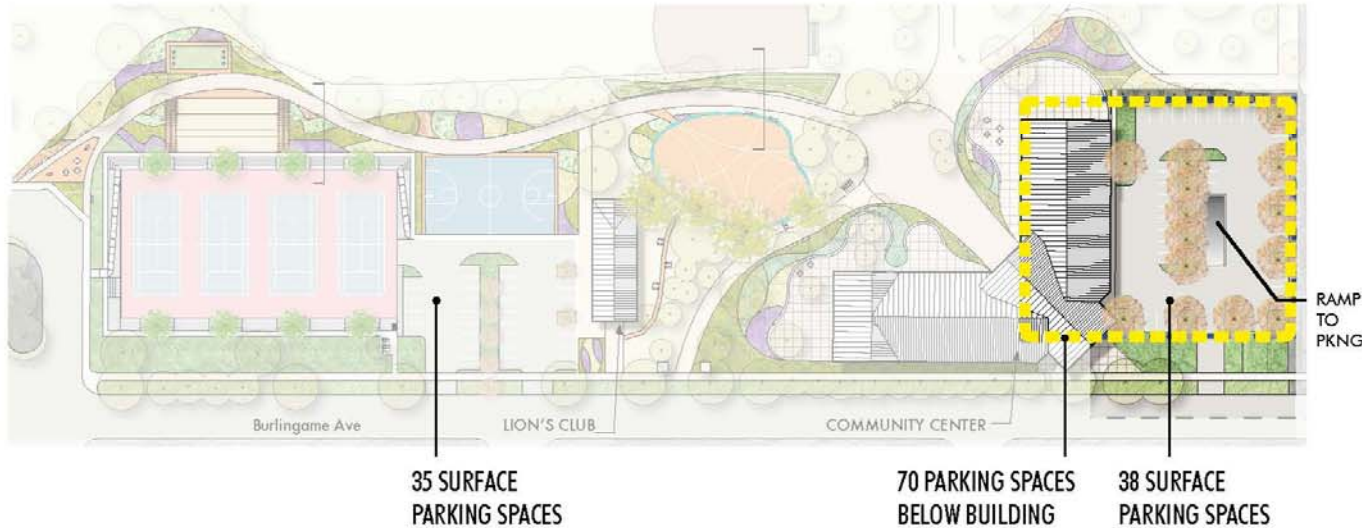
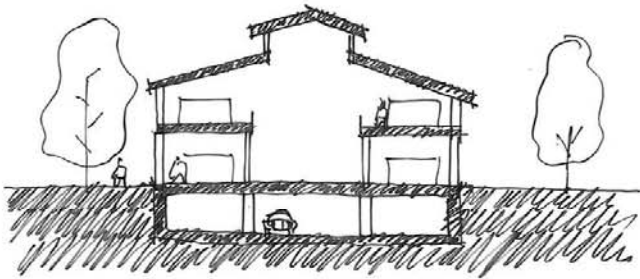
# SITE PLAN



# PARKING OPTIONS - 143 spaces

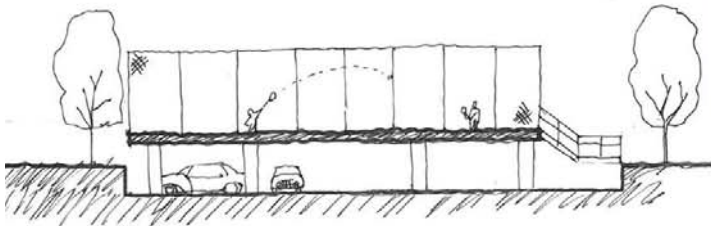
## Option 1

Surface +  
Underground Parking



## Option 2

Surface + Below Courts  
Parking (1/2 level down)

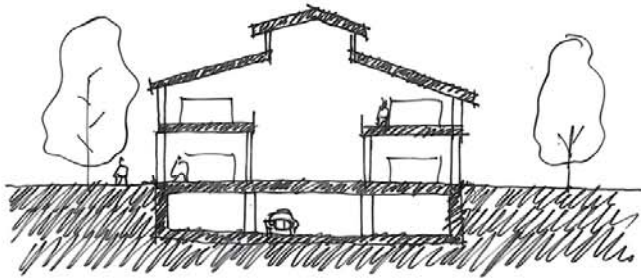




# PARKING OPTIONS - 207 spaces

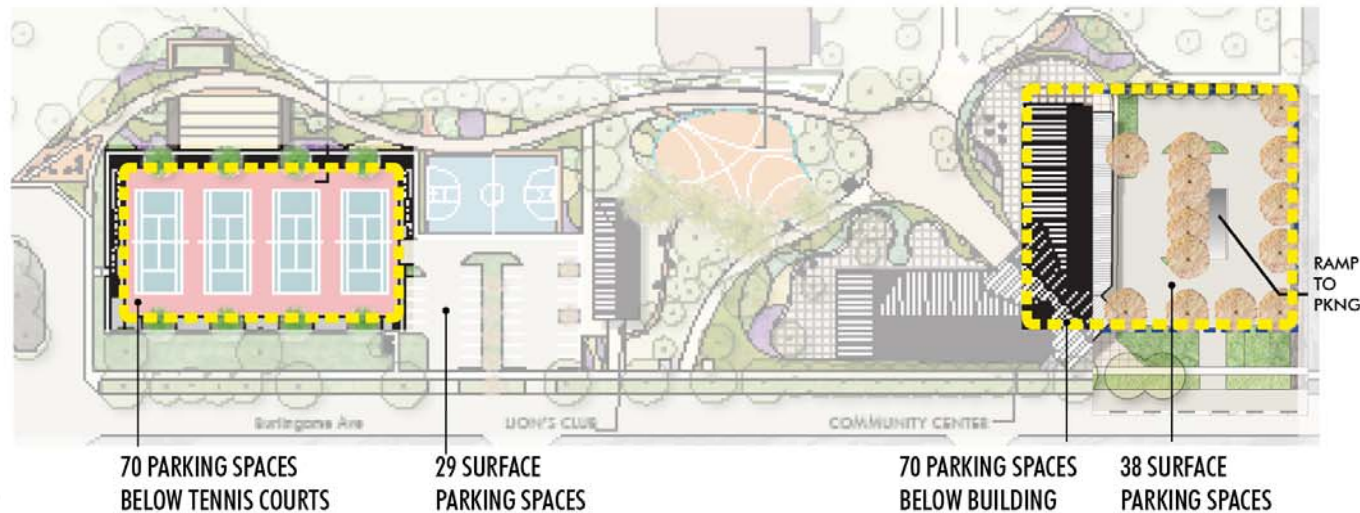
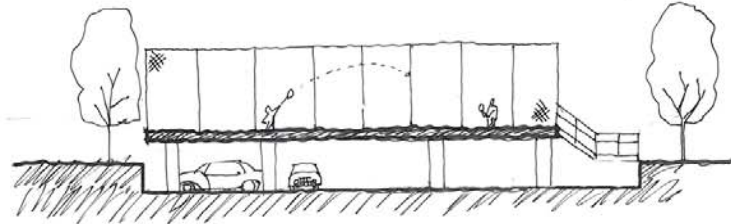
## Option 3

Surface +  
Underground Parking

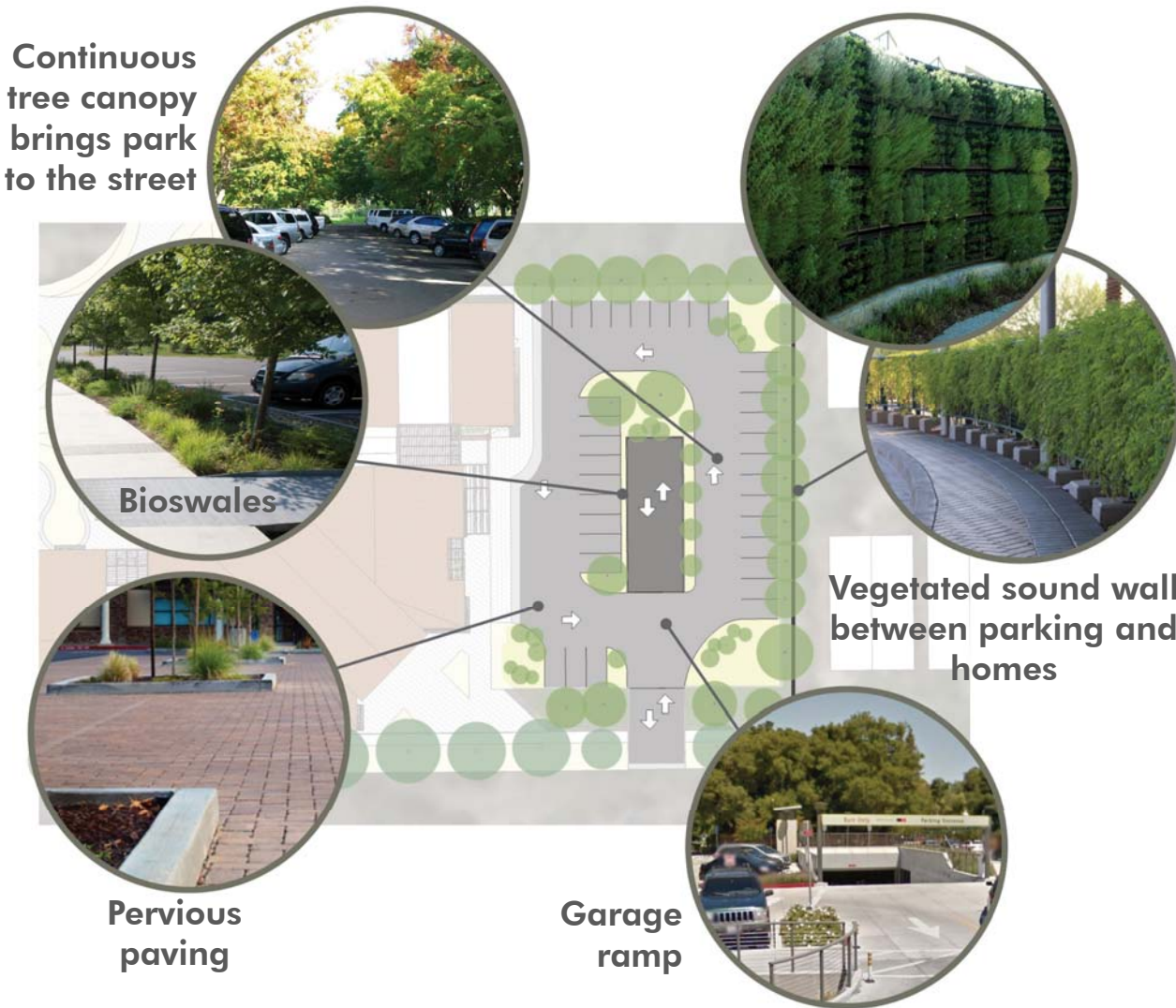


+

Surface + Below Courts  
Parking (1/2 level down)



# PARKING LOT: DESIGN STRATEGIES

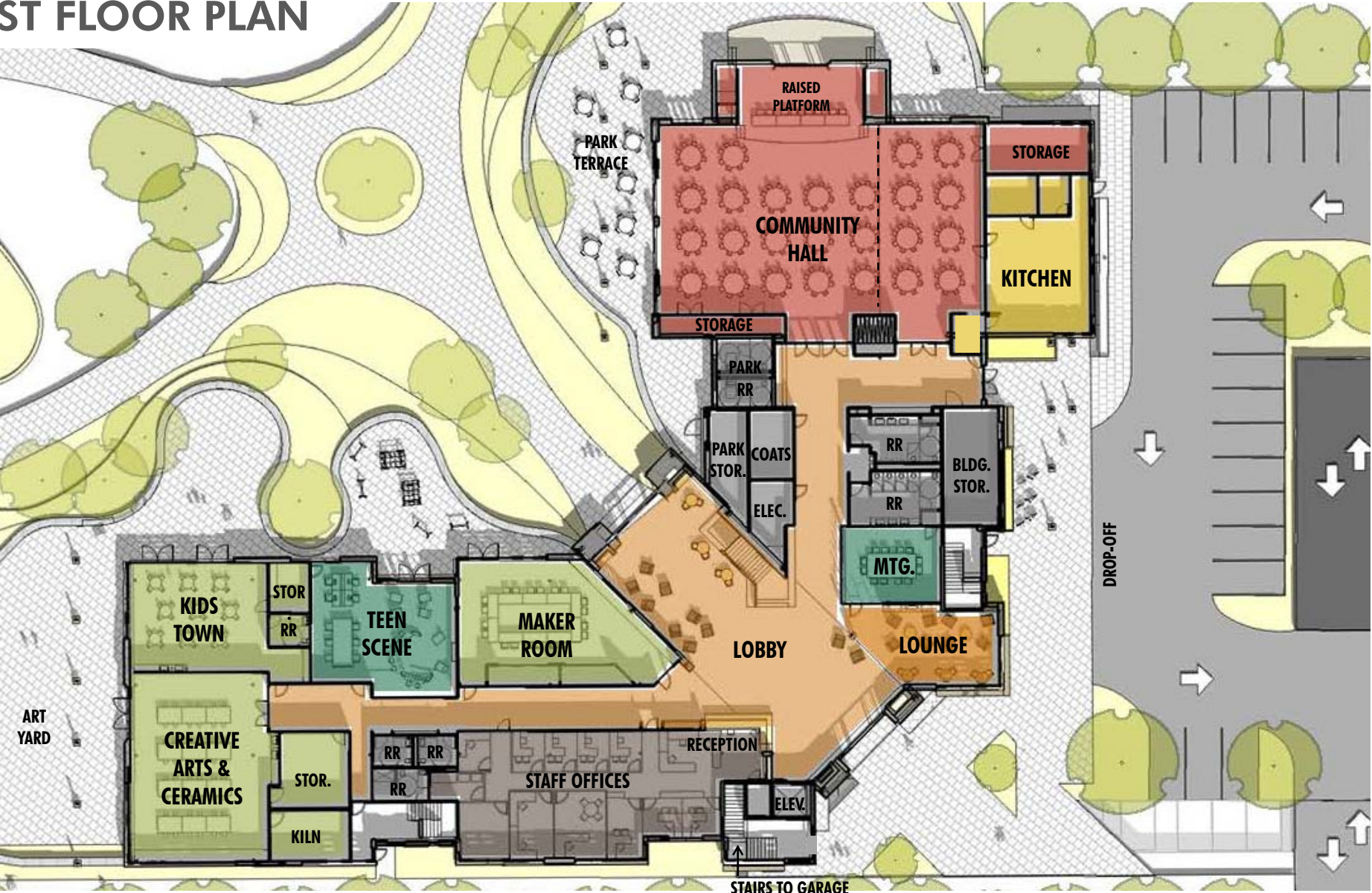


## (04/14) TSPC Meeting Comments:

- Additional 64 spaces above recommended 143 – can the City charge for these spaces? Could help offset cost of pursuing both options
- Explore opportunities for co-use of the High School parking lots for peak demand events
- Important to consider bicycle and pedestrian impacts of parking options and the overall site plan
- Using spaces for downtown parking when community center is not at peak demand
- Exceeding the parking recommendation – could this have an adverse effect on alternative modes of transportation?
- Surface lot adjacent to community center zoned for short-term, senior, ADA, and staff parking only

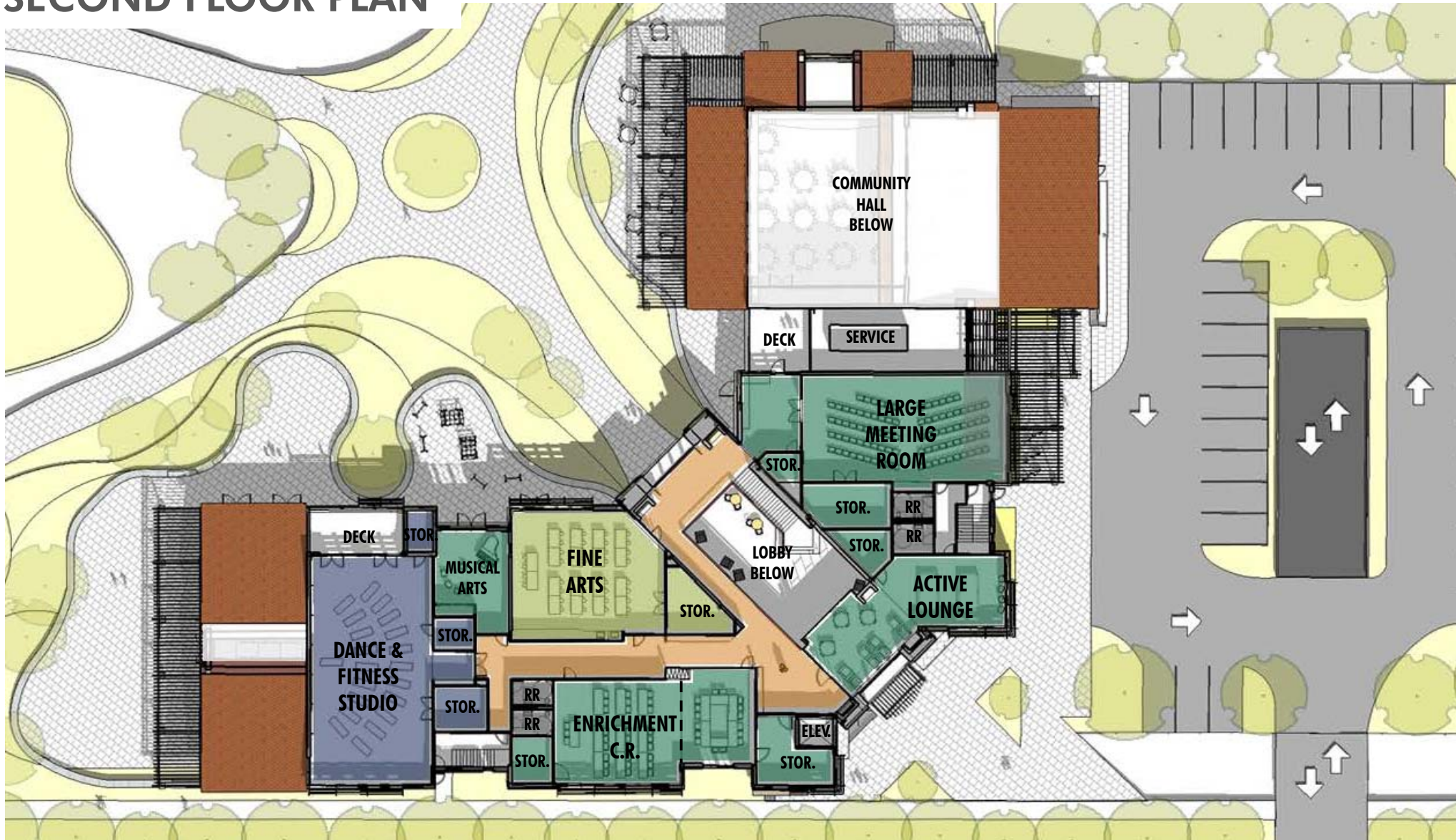


# FIRST FLOOR PLAN





## SECOND FLOOR PLAN







## COMMUNITY HALL AND PARK TERRACE



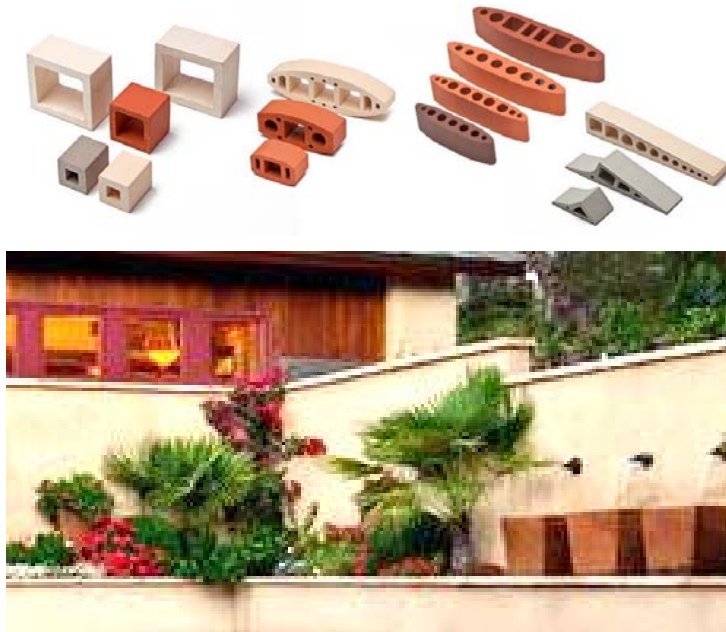
**ENTRY VIEW FROM BURLINGAME AVE.**



# PALETTE 1



# PALETTE 2





# INDOOR-OUTDOOR CONNECTIONS INSPIRATION











**INTERIOR VIGNETTE: LOBBY**





INTERIOR VIGNETTE: KIDS TOWN





INTERIOR VIGNETTE: DANCE & FITNESS STUDIO