

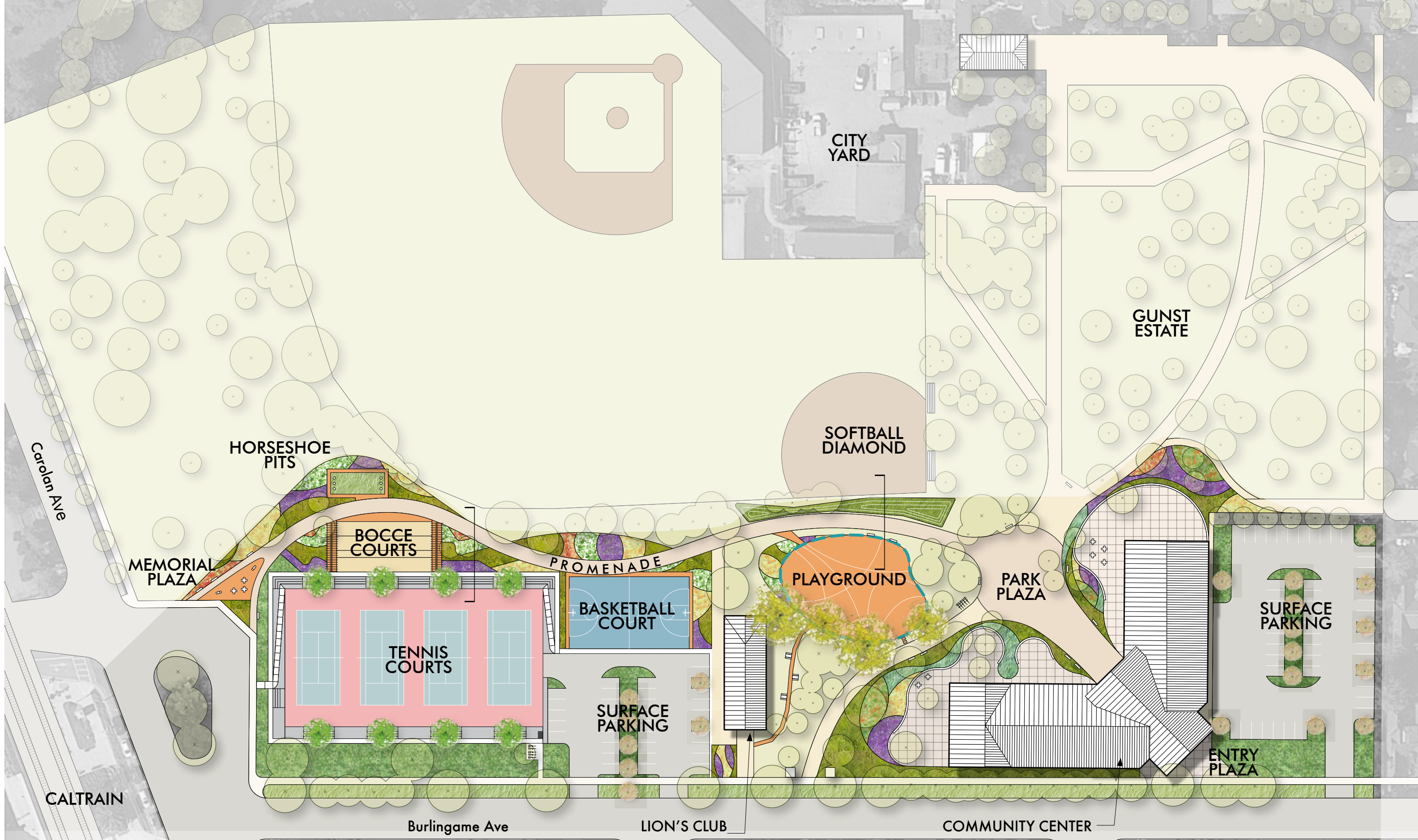


City of Burlingame

Community Center Facilities Master Plan

City Council Presentation
07.07.2014



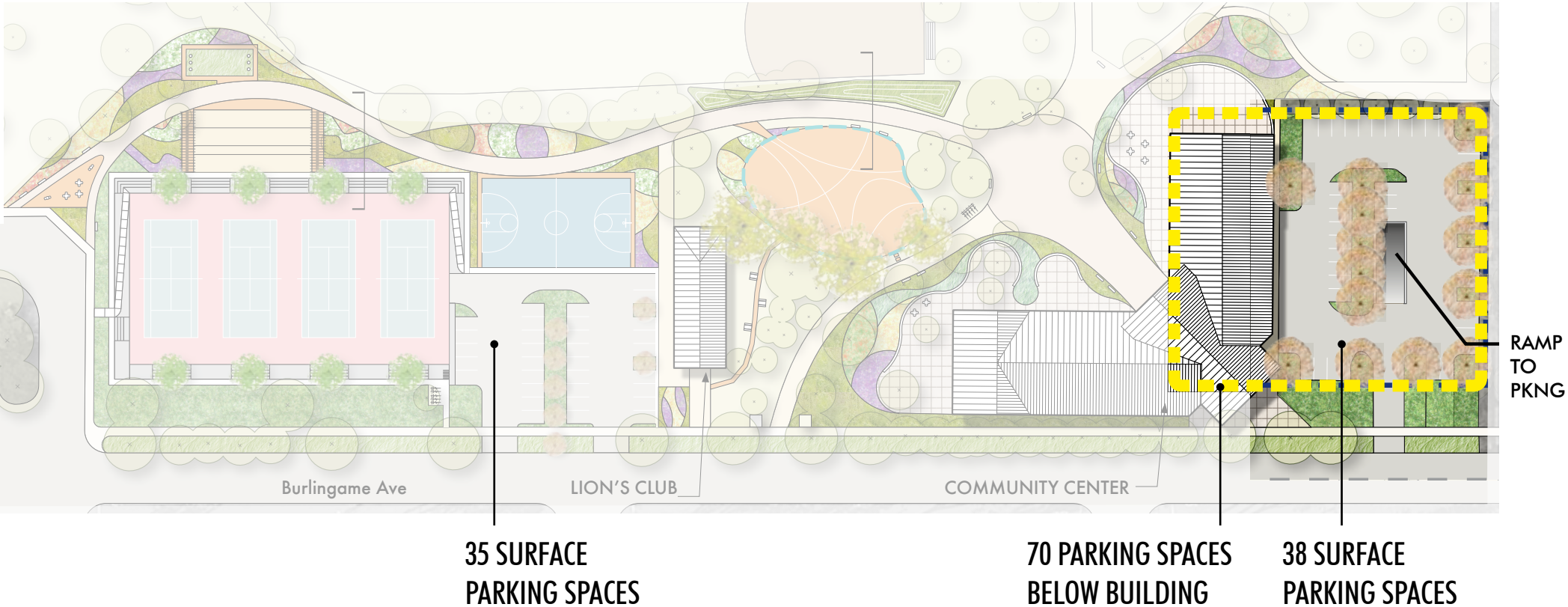
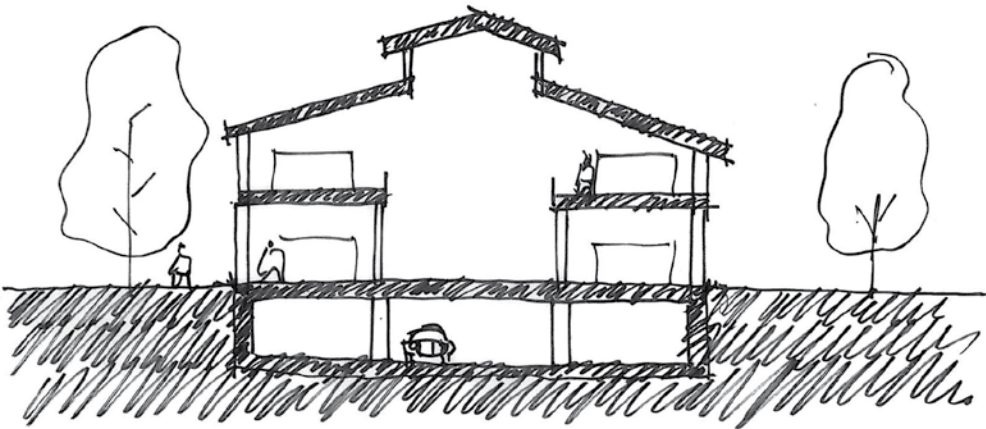


Site Plan

PARKING OPTIONS - 143 spaces

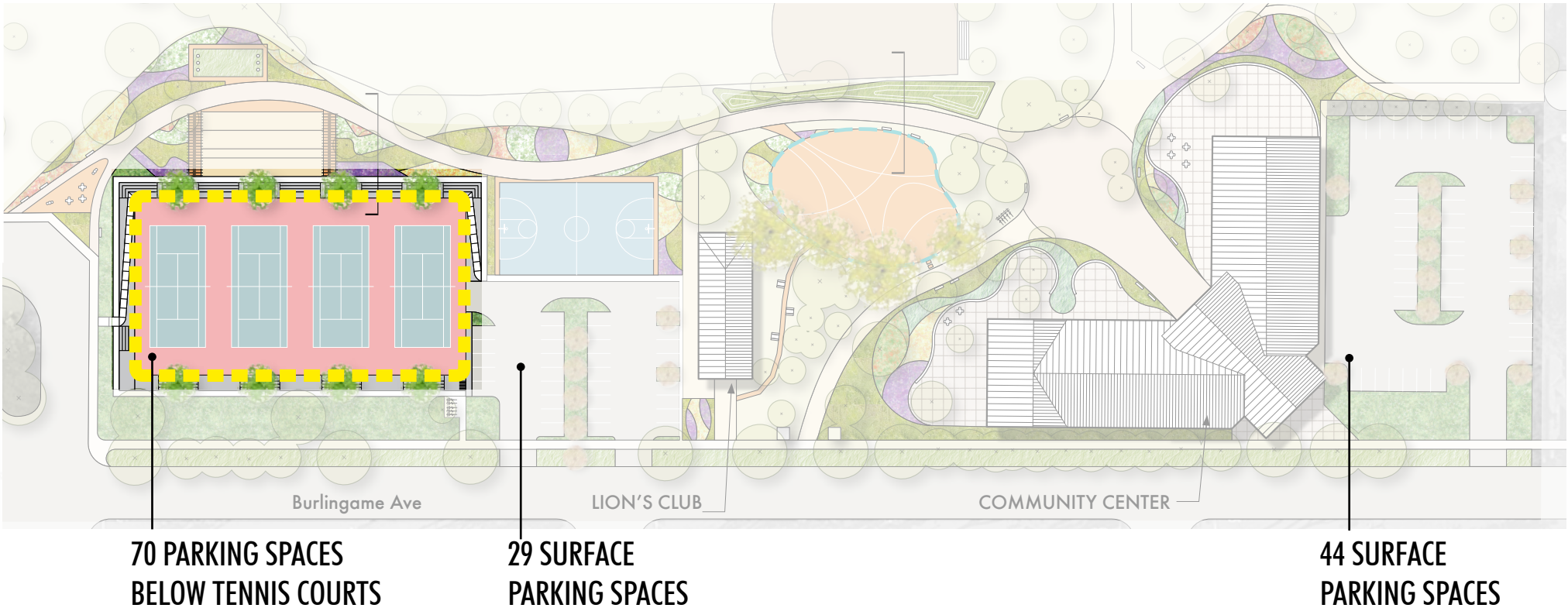
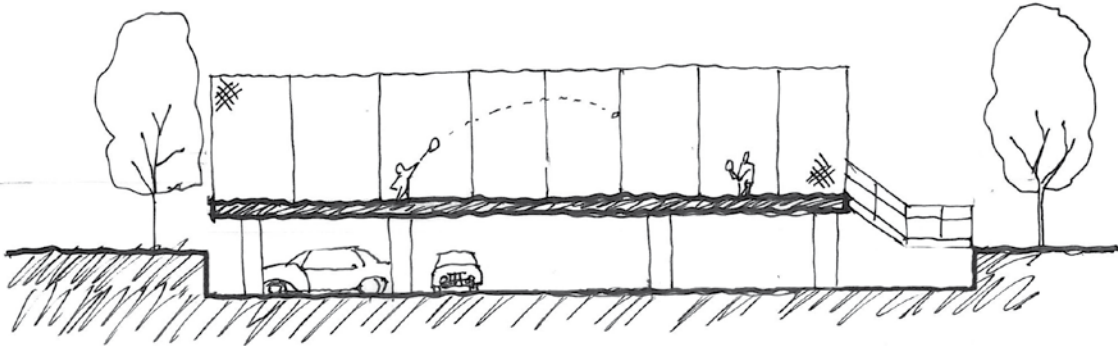
Option 1

Surface +
Underground Parking



Option 2

Surface + Below Courts
Parking (1/2 level down)





Bocce Courts + Horseshoe Pits



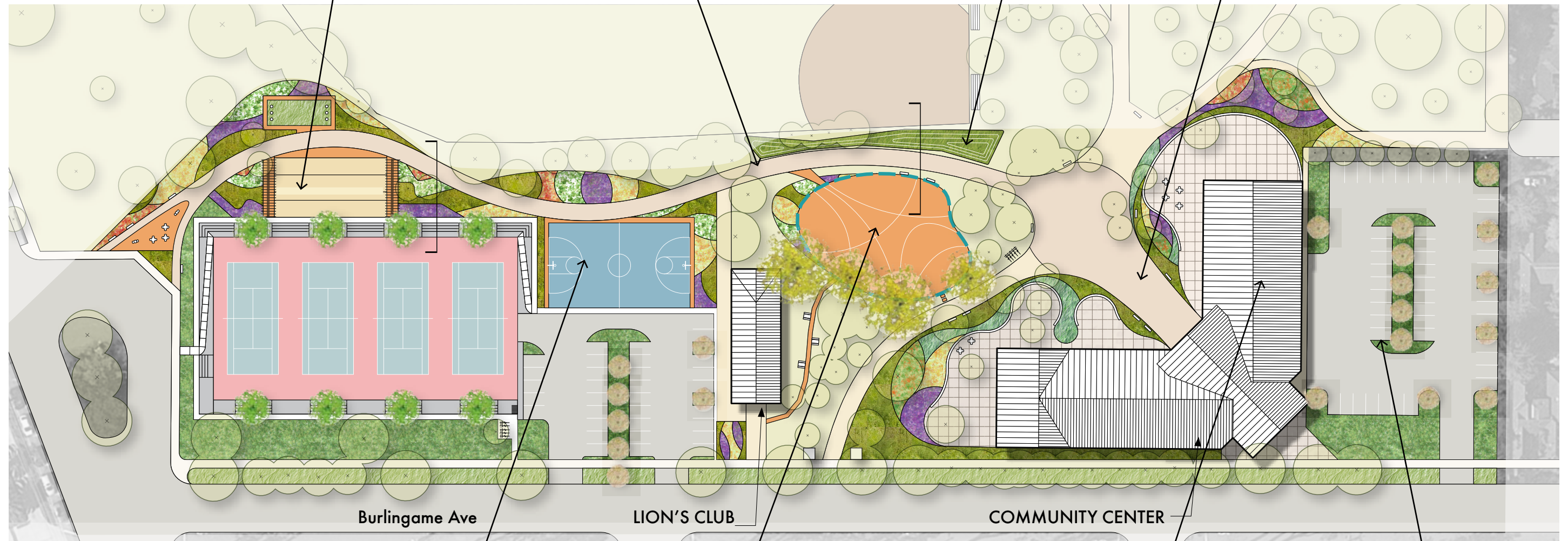
Pathway Seating



Bermed Event Seating



Entry plaza



Basketball Courts



Playground



Dance & Exercise Rooms



Tree-covered Parking



WASHINGTON PARK SITE SECTION -
PROMENADE AT PARKING/TENNIS COURTS



WASHINGTON PARK SITE SECTION -
PROMENADE AT EXISTING SOFTBALL DIAMOND
AND RELOCATED PLAYGROUND

BUILDING PROGRAM

Spaces			Total SF
1	Entry		1,700
	Gallery		
2	Activity & Meeting Spaces		5,880
	Multi-Purpose Room w/ Raised Platform @ 4,000 sf		
3	Classrooms		4,840
	Catering Kitchen		
	4 Multi-use Classrooms		
4	Multi-Gen Activity Rooms		2,850
	Large Activity Room		
	Small Activity Room		
5	Technology/Media Lab		1,040
6	Visual & Fine Arts		3,860
	Art Room		
	Craft Room		
	Studio		
	Kiln Room		
7	Athletics & Fitness		4,140
	Dance Studio		
8	Staff Spaces		2,250
9	Support Spaces (Restrooms, Janitors' Closets, Mechanical)		1,900
Subtotal			28,400
Circulation Factor			6,600
Total Program			~35,000 sf

• **build new spaces for existing programs up to current standards**

- + 500 sf larger multi-purpose room w/ raised platform
- + multi-generational activity rooms
- + small group meeting rooms
- + improved storage
- + 2 additional classrooms