



City of Burlingame Proposed Community Center

City Council Study Session

September 17, 2018





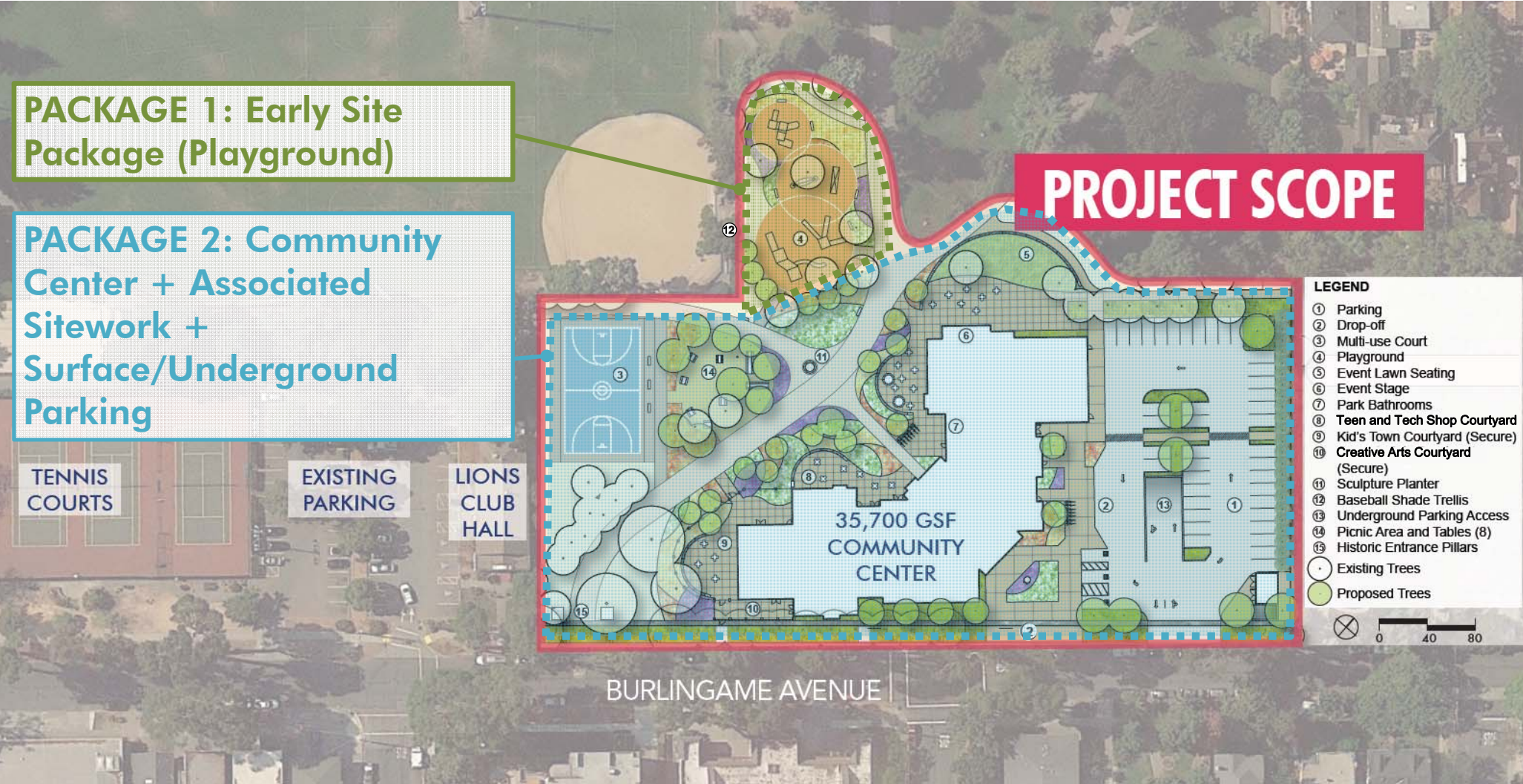
AGENDA

1. Project Schedule Update
2. Project Overview and Updates
3. Council Action Requested:
 - Provide Input on:
 - Project Scope + Budget
 - Provide direction for Underground Parking
 - Approve CAC recommended Materials Palette
 - Approve Concept of Early Playground Site Package (Scope + Schedule)
4. Next Steps

PROJECT SCHEDULE: Community Center

- **Schematic Design:** **July – October 2018**
 - *15% Construction Documents*
 - ☐ Refine Design and Select Building Systems
 - ☐ Develop Material and Color Palette
 - ☐ Integrated Design Workshop (September)
 - ☐ City Council Study Session (September) – **TODAY!**
 - ☐ Planning Commission (September)
 - ☐ Parks and Recreation Commission (September)
 - ☐ Technical Meetings Round 2 - Planning, Building, Fire, Police (September)
 - ☐ City Council Presentation (November 5)
- **Design Development:** **November 2018- March 2019**
 - *30% Construction Documents*
- **Construction Documents:** **April – September 2019**
 - *60%, 90% & Plan Check*
- **Bid and Award:** **September – December 2019**
- **Construction:** **January 2020 – December 2021**

BURLINGAME COMMUNITY CENTER PROJECT SCOPE

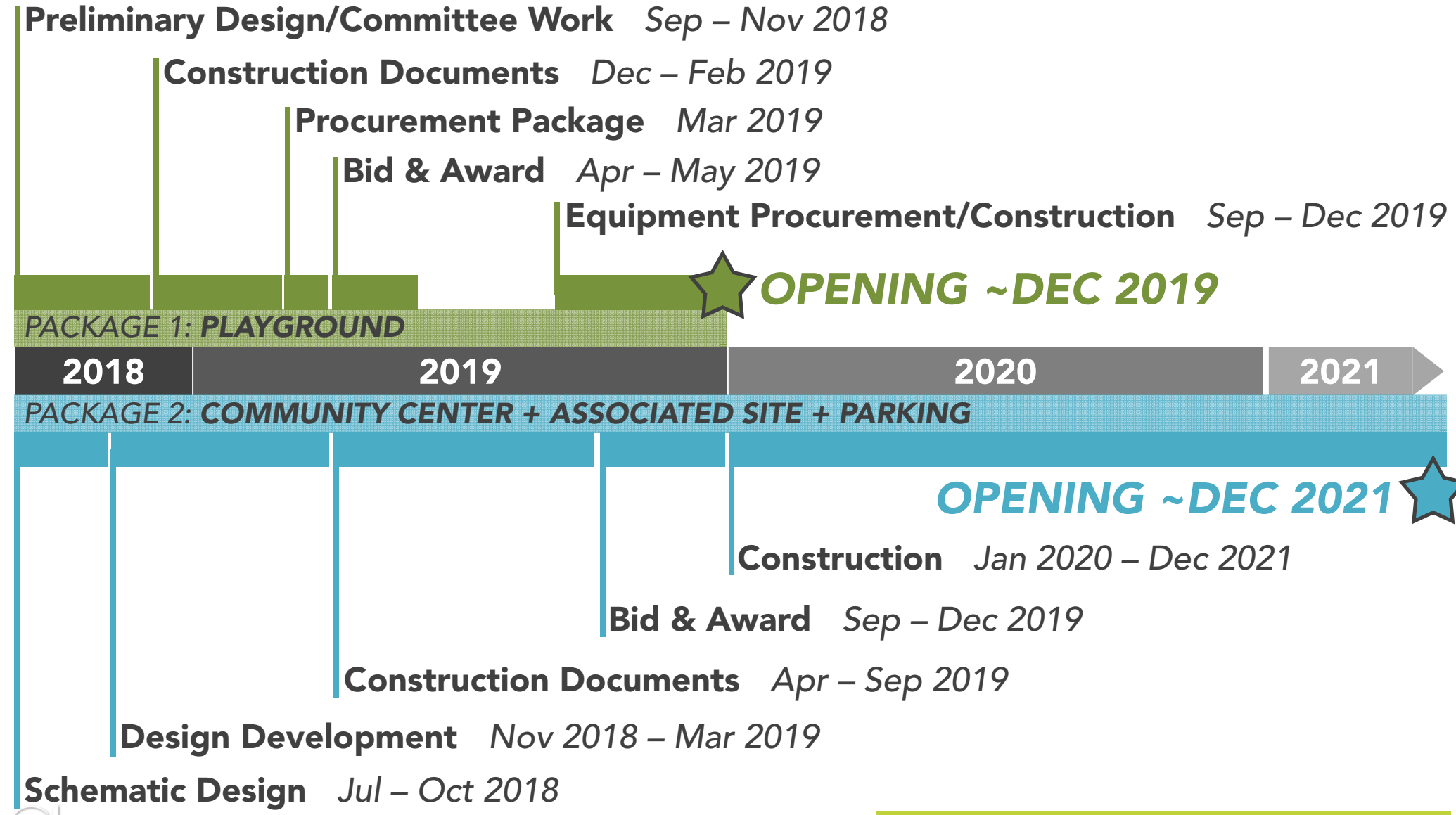


EARLY SITE PACKAGE – PLAYGROUND

- CIVIL
- LANDSCAPE
- ELECTRICAL



PROJECT SCHEDULES



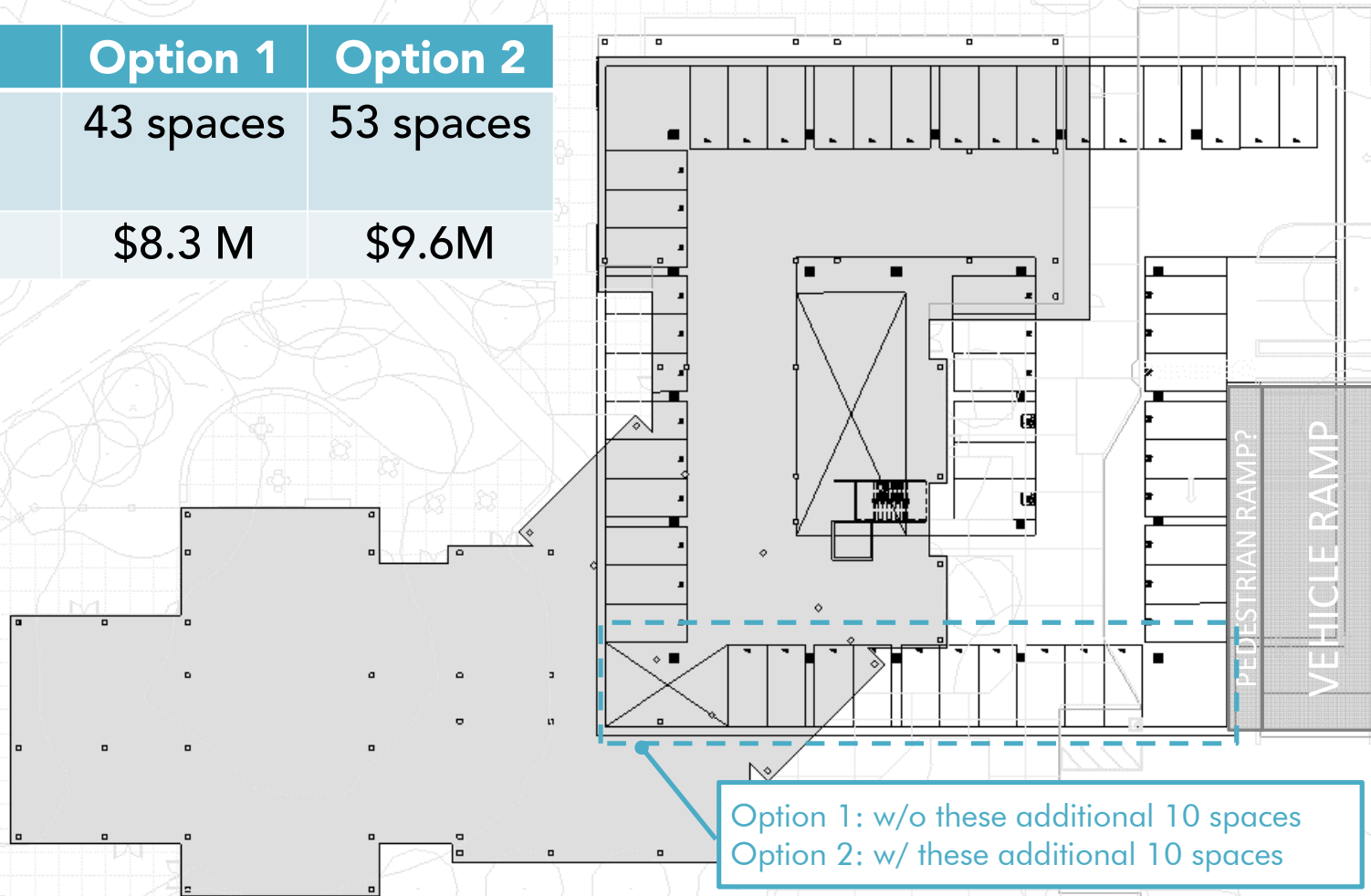
PROJECT COST MODEL – Status

	Hard Cost	Soft Cost	Subtotal	Project Contingency	Escalation	Total
PACKAGE 1: Early Site Package (Playground)						
<i>Early Site Package Option</i>	\$718,134	\$189,000	\$907,134	\$67,115	\$57,451	\$1,031,700
PACKAGE 2: Building + Associate Site + Parking						
<i>Option 1: 43 Underground parking spaces</i>	\$31,289,341	\$9,012,000	\$40,301,341	\$2,924,239	\$3,588,239	\$46,813,819
<i>Option 2: 53 Underground parking spaces</i>	\$32,208,119	\$9,254,000	\$41,462,119	\$2,993,457	\$3,691,693	\$48,147,269
Community Center Building Project (incl. FF&E & site work)	\$25,675,816	\$7,538,000	\$33,213,816	\$2,399,611	\$2,956,156	\$38,569,583
<i>Building</i>	\$21,065,794	\$6,327,000	\$27,392,794	\$1,968,766	\$2,372,008	\$31,733,568
<i>FF&E</i>	\$1,376,000	\$362,000	\$1,738,000	\$128,600	\$154,938	\$2,021,538
<i>Sitework</i>	\$3,234,023	\$849,000	\$4,083,023	\$302,245	\$429,210	\$4,814,478
Underground Parking						
43 spaces	\$5,613,525	\$1,474,000	\$7,087,525	\$524,629	\$632,083	\$8,244,236
53 space	\$6,532,303	\$1,716,000	\$8,248,303	\$593,846	\$735,537	\$9,577,686
ADD ALTERNATES (incl. contingencies, escalation, soft costs)						
Photovoltaic Panel System (on building)						\$1,170,000
Green Roof on Kid's Town						\$156,000
Emergency Generator/ or Battery						\$310,000
Elevator #2						\$340,000

COUNCIL DIRECTION

UNDER BUILDING PARKING OPTION

	Option 1	Option 2
No. of Spaces	43 spaces	53 spaces
Cost	\$8.3 M	\$9.6M



PROJECT COST MODEL – *Add Alternates*

- **Photovoltaic Panels**

- *Low Interest Loan from the State Energy Commission OR*
- *Power Purchase Agreement*

- **Green Roof**

- *Possible Fundraising Opportunity*

- **Emergency Generator or Battery Back-Up**

- *Depending on costs maybe able to be funded through project contingency*

- **Elevator #2**

- *Depending on costs maybe able to be funded through project contingency*

EXTERIOR PERSPECTIVES

BURLINGAME AVENUE ENTRY VIEW



EXTERIOR PERSPECTIVES

PARKSIDE VIEW



GROUP 4

09.17.18

11

BURLINGAME COMMUNITY CENTER

EXTERIOR PERSPECTIVES

WEST ELEVATION ON BURLINGAME AVENUE



GROUP 4

09.17.18 12

BURLINGAME COMMUNITY CENTER

BURLINGAME COMMUNITY CENTER

FLYTHROUGH ANIMATION



PRELIMINARY EXTERIOR MATERIALS PALETTE SUMMARY

TYPICAL
 STUCCO (EIFS) WALLS
 WOOD SOFFIT/TRELLISES
 METAL WINDOW MULLIONS

PAVILION ACCENT
 METAL
WALL ACCENT
 WOOD PANEL
BASE ACCENT
 STONE

EXTERIOR ENVELOPE: EXTERIOR FINISHES



PRELIMINARY EXTERIOR MATERIALS PALETTE

STUCCO



PRELIMINARY EXTERIOR MATERIALS PALETTE

WOOD SOFFIT/TRELLISES



PRELIMINARY EXTERIOR MATERIALS PALETTE

PAVILION METAL PANEL



PRELIMINARY EXTERIOR MATERIALS PALETTE

STONE BASE



Platinum Lavastone



PRELIMINARY EXTERIOR MATERIALS PALETTE

HORIZONTAL WOOD ACCENT



INPUT REQUESTED – Today

Council Input requested at tonight's Council Study Session:

- Provide input on the underground parking options.
- Approve scope and schedule for the early site package for the playground design and construction.
- Approve exterior material palette as recommended by the Advisory Committee.
- Provide input regarding preliminary exterior color palette.
- Provide input on the project scope and budget.

NEXT STEPS – 11/5 City Council Meeting

Council Action that will be requested at the November Council meeting:

- Direction and approval on the project budget.
- Approval of the schematic design package.





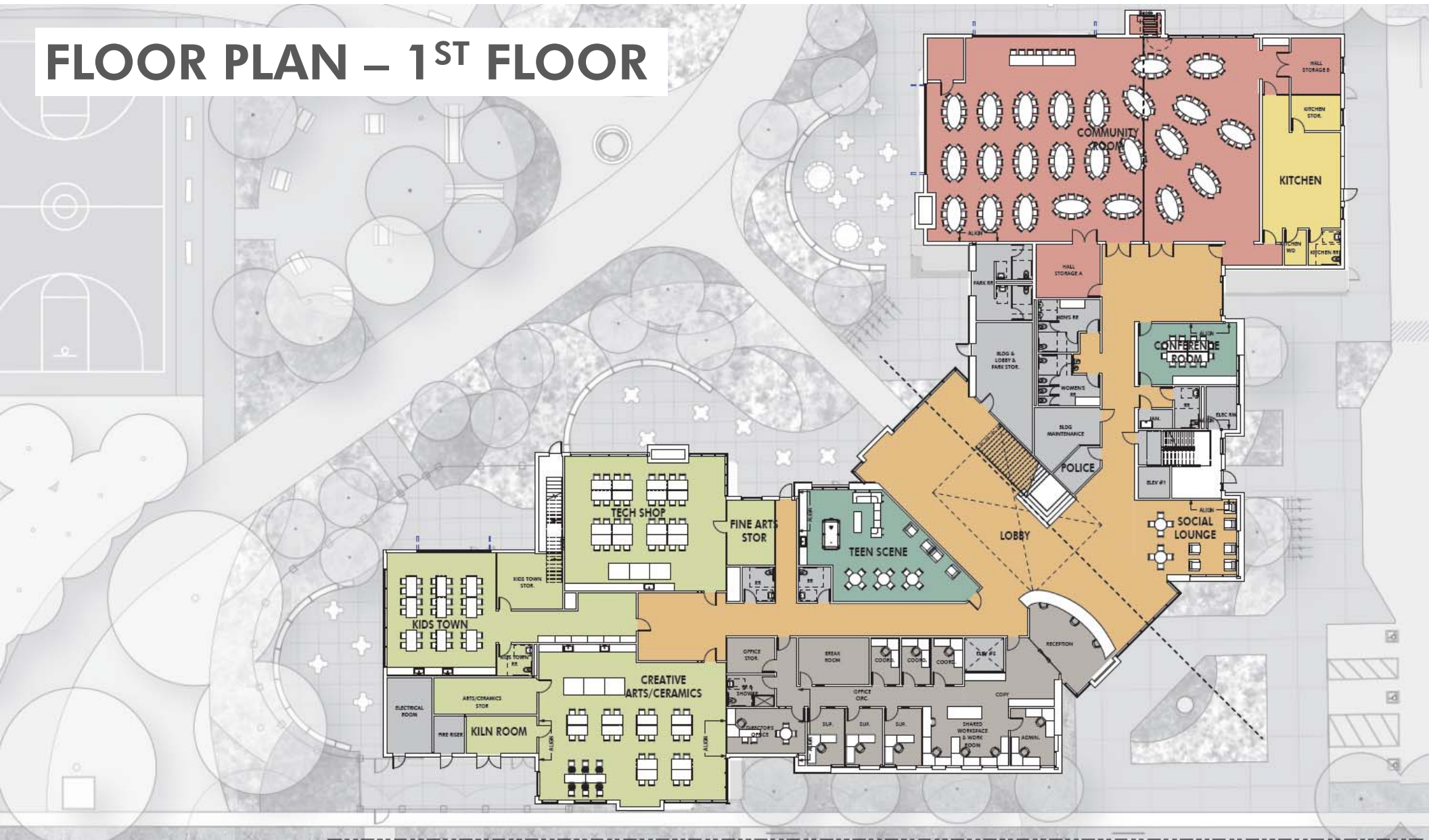
City of Burlingame Proposed Community Center

City Council Study Session

September 17, 2018



FLOOR PLAN – 1ST FLOOR



FLOOR PLAN – 2nd FLOOR

