

# NEW COMMUNITY CENTER CONSTRUCTION UPDATE, FEBRUARY 2021

---





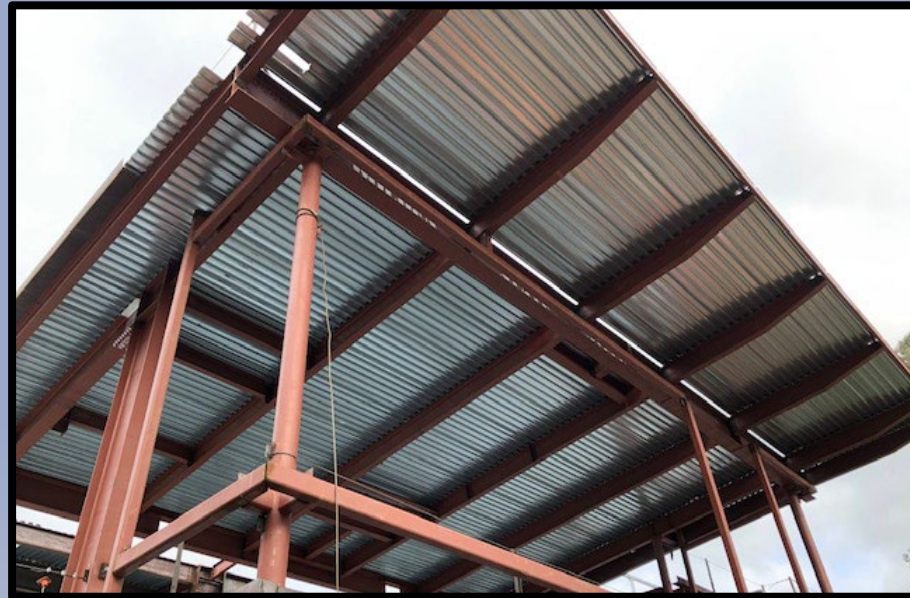
# TIMELINE

Milestones	Completion Date
Project Start-up	May 2020
Structural Steel	April 2021
Underground Parking Garage	June 2021
Curtainwall	October 2021
Tape & Finish Drywall	December 2021
Site Work	February 2022
Certificate of Occupancy	May 2022
Soft Opening & Move-in	May 2022
Open to the Public	Early June 2022

Note: Dates are estimates and may change due to unforeseen circumstances.









# BUDGET

	Budget	Change Orders	Updated Budget
Architects	\$3,725,963	\$76,074	\$3,802,037
Construction Manager	\$1,098,580	\$36,000	\$1,134,580
General Contractor	\$40,138,000	\$292,928	\$40,430,928
Fees/Testing/Temp Facilities	\$866,297	\$116,300	\$982,597
FEE's	\$559,057		\$559,057
Photo Voltaic Panels	\$1,129,156		\$1,129,156
Contingencies	\$5,125,951		\$4,604,649
Total	\$52,643,004	\$521,302	\$52,643,004







Connect



Grow



Explore

# Build Possibilities

BURLINGAME COMMUNITY CENTER  
CAPITAL CAMPAIGN

[burlingamecommunitycenter.org](http://burlingamecommunitycenter.org)



For more information about the construction, contact Construction Manager George Sanen at 650-558-7321