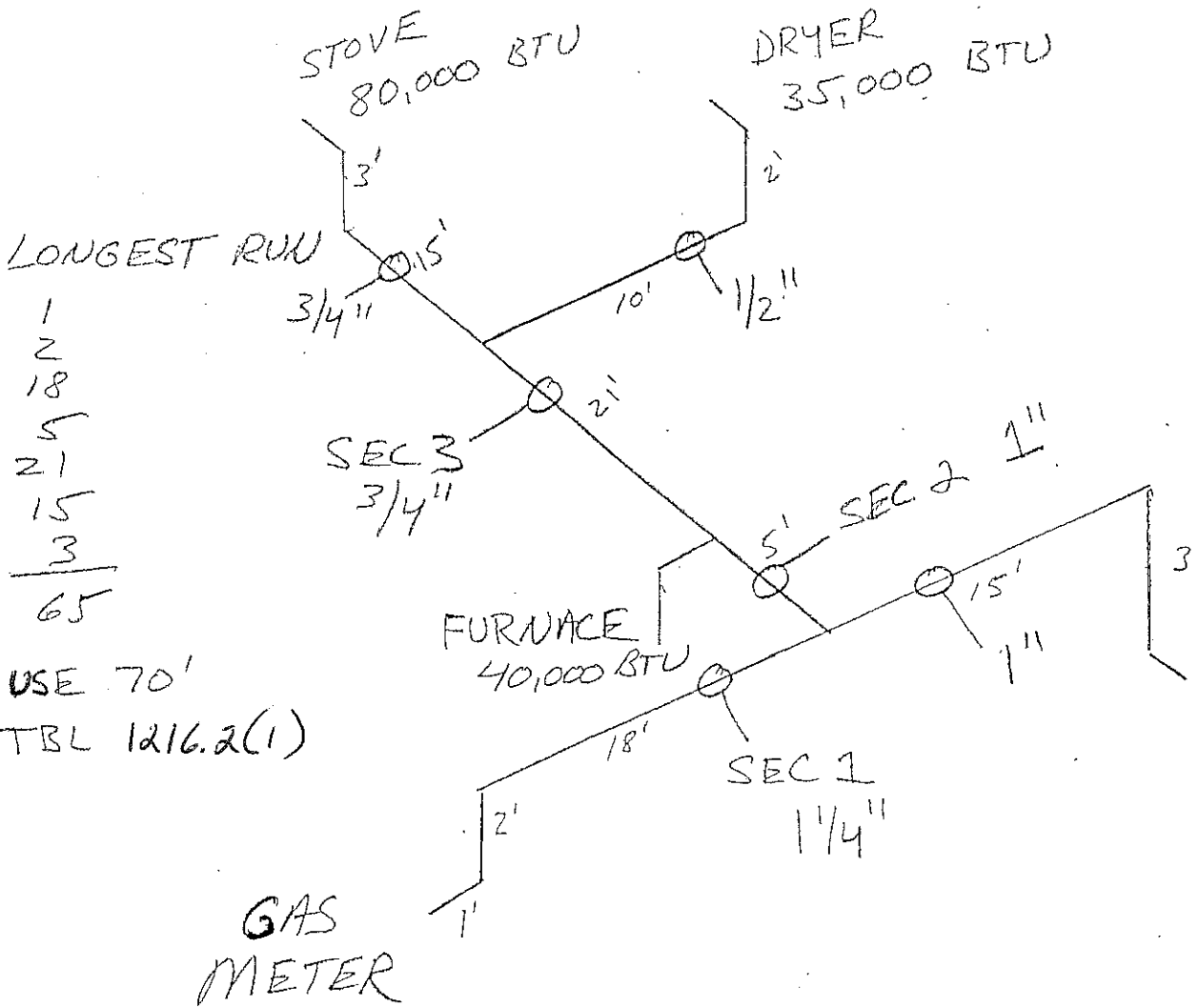


2013 CPC TABLE 1216.2 (1) GAS PIPE SIZING EXAMPLE

$$\begin{aligned} \text{SEC 1} - (304) &= 1\frac{1}{4}'' \\ \text{SEC 2} - (141) &= 1'' \\ \text{SEC 3} - (105) &= 3/4'' \end{aligned}$$



$$\begin{array}{r} 180,000 \\ 40,000 \\ 35,000 \\ 80,000 \\ \hline 335,000 \text{ BTU} \\ \div 1100 = \\ 304 \text{ CFH} \end{array}$$

USE 70'
TBL 1216.2(1)

TANKLESS
WT HTR
180,000 BTU

TABLE 1216.2(1)
 SCHEDULE 40 METALLIC PIPE [NFPA 54: TABLE 6.2(b)]^{1, 2}

														GAS: NATURAL													
														INLET PRESSURE: LESS THAN 2 psi													
														PRESSURE DROP: 0.5 in. w.c.													
														SPECIFIC GRAVITY: 0.60													
														PIPE SIZE (inch)													
NOMINAL:	½	¾	1	1¼	1½	2	2½	3	4	5	6	8	10	12													
ACTUAL ID:	0.622	0.824	1.049	1.380	1.610	2.067	2.469	3.068	4.026	5.047	6.065	7.981	10.020	11.938													
LENGTH (feet)	CAPACITY IN CUBIC FEET OF GAS PER HOUR																										
10	172	360	678	1390	2090	4020	6400	11 300	23 100	41 800	67 600	139 000	252 000	399 000													
20	118	247	466	957	1430	2760	4400	7780	15 900	28 700	46 500	95 500	173 000	275 000													
30	95	199	374	768	1150	2220	3530	6250	12 700	23 000	37 300	76 700	139 000	220 000													
40	81	170	320	657	985	1900	3020	5350	10 900	19 700	31 900	65 600	119 000	189 000													
50	72	151	284	583	873	1680	2680	4740	9660	17 500	28 300	58 200	106 000	167 000													
60	65	137	257	528	791	1520	2430	4290	8760	15 800	25 600	52 700	95 700	152 000													
70	60	126	237	486	728	1400	2230	3950	8050	14 600	23 600	48 500	88 100	139 000													
80	56	117	220	452	677	1300	2080	3670	7490	13 600	22 000	45 100	81 900	130 000													
90	52	110	207	424	635	1220	1950	3450	7030	12 700	20 600	42 300	76 900	122 000													
100	50	104	195	400	600	1160	1840	3260	6640	12 000	19 500	40 000	72 600	115 000													
125	44	92	173	355	532	1020	1630	2890	5890	10 600	17 200	35 400	64 300	102 000													
150	40	83	157	322	482	928	1480	2610	5330	9650	15 600	32 100	58 300	92 300													
175	37	77	144	296	443	854	1360	2410	4910	8880	14 400	29 500	53 600	84 900													
200	34	71	134	275	412	794	1270	2240	4560	8260	13 400	27 500	49 900	79 000													
250	30	63	119	244	366	704	1120	1980	4050	7320	11 900	24 300	44 200	70 000													
300	27	57	108	221	331	638	1020	1800	3670	6630	10 700	22 100	40 100	63 400													
350	25	53	99	203	305	587	935	1650	3370	6100	9880	20 300	36 900	58 400													
400	23	49	92	189	283	546	870	1540	3140	5680	9190	18 900	34 300	54 300													
450	22	46	86	177	266	512	816	1440	2940	5330	8620	17 700	32 200	50 900													
500	21	43	82	168	251	484	771	1360	2780	5030	8150	16 700	30 400	48 100													
550	20	41	78	159	239	459	732	1290	2640	4780	7740	15 900	28 900	45 700													
600	19	39	74	152	228	438	699	1240	2520	4560	7380	15 200	27 500	43 600													
650	18	38	71	145	218	420	669	1180	2410	4360	7070	14 500	26 400	41 800													
700	17	36	68	140	209	403	643	1140	2320	4190	6790	14 000	25 300	40 100													
750	17	35	66	135	202	389	619	1090	2230	4040	6540	13 400	24 400	38 600													

For SI units: 1 inch = 25 mm, 1 foot = 304.8 mm, 1 cubic foot per hour = 0.0283 m³/h, 1 pound-force per square inch = 6.8947 kPa, 1 inch water column = 0.249 kPa

Notes:

¹ Table entries are rounded to 3 significant digits.

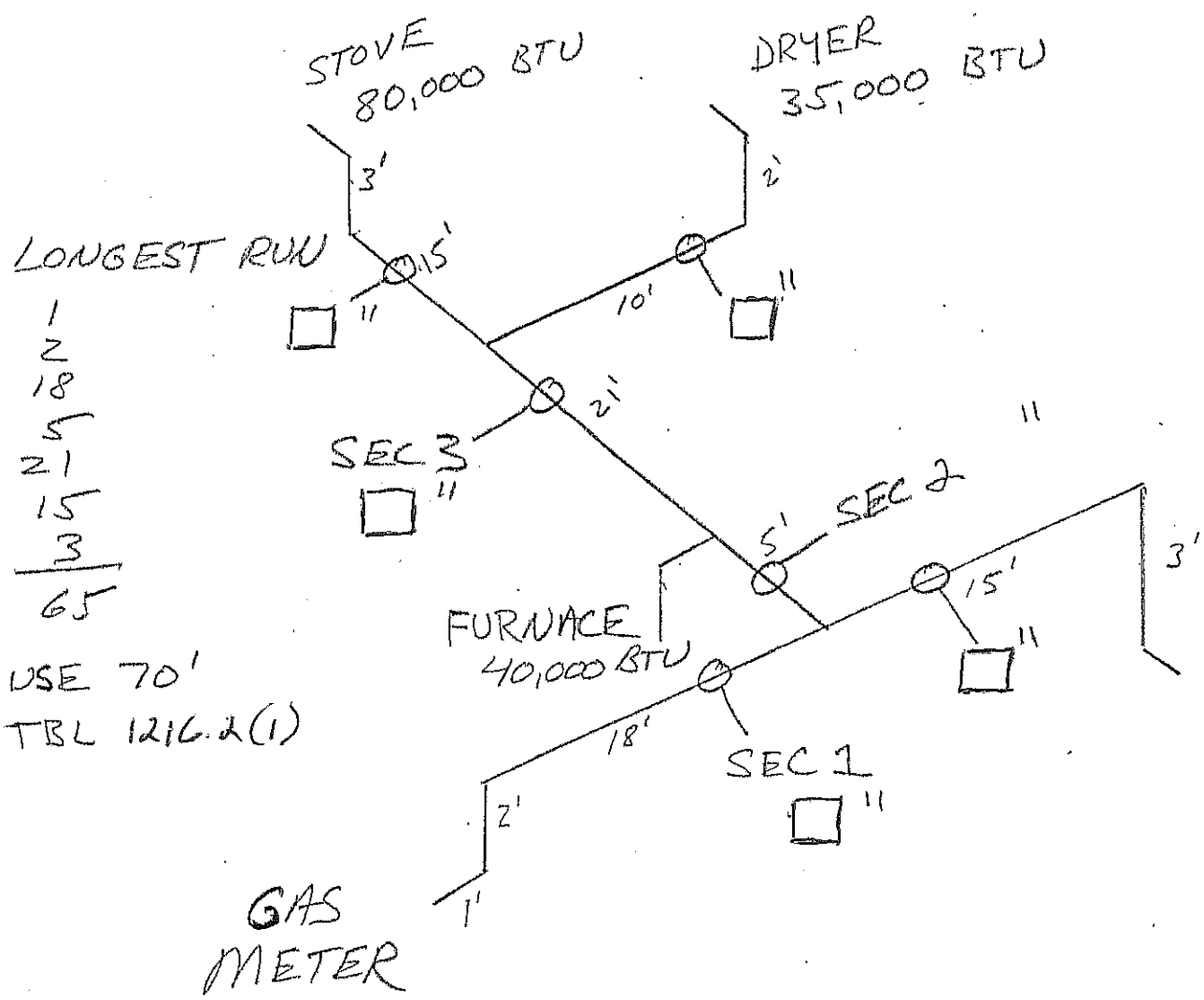
² NA means a flow of less than 10 ft³/h (0.283 m³/h).

2013 CPC TABLE 1216.2 (1) GAS PIPE SIZING EXAMPLE

SEC 1 - (304) = "

SEC 2 - (141) = "

SEC 3 - (105) = "



180,000
 40,000
 35,000
 80,000

 335,000 BTU
 ÷ 1100 =
 304 CFH

LONGEST RUN

1
 2
 18
 5
 21
 15
 3

 65

USE 70'
 TBL 1216.2(1)