

BURLINGAME POINT PROJECT

BURLINGAME, CA

SITE PLAN

FEBRUARY 22ND STUDY SESSION



PROPOSED AUGUST 22ND



SITE PLAN



BAY TRAIL DESIGN

OPEN SPACE DESIGN

SANCHEZ CHANNEL
SHORELINE

SERVICE ACCESS

AMENITY BUILDING
DESIGN

LANDSCAPE PALETTE: NATIVE, DROUGHT TOLERANT PLANTS



SHORELINE; ECOLOGICAL RESTORATION



PROMENADE



PROMENADE



SHORELINE SEATING

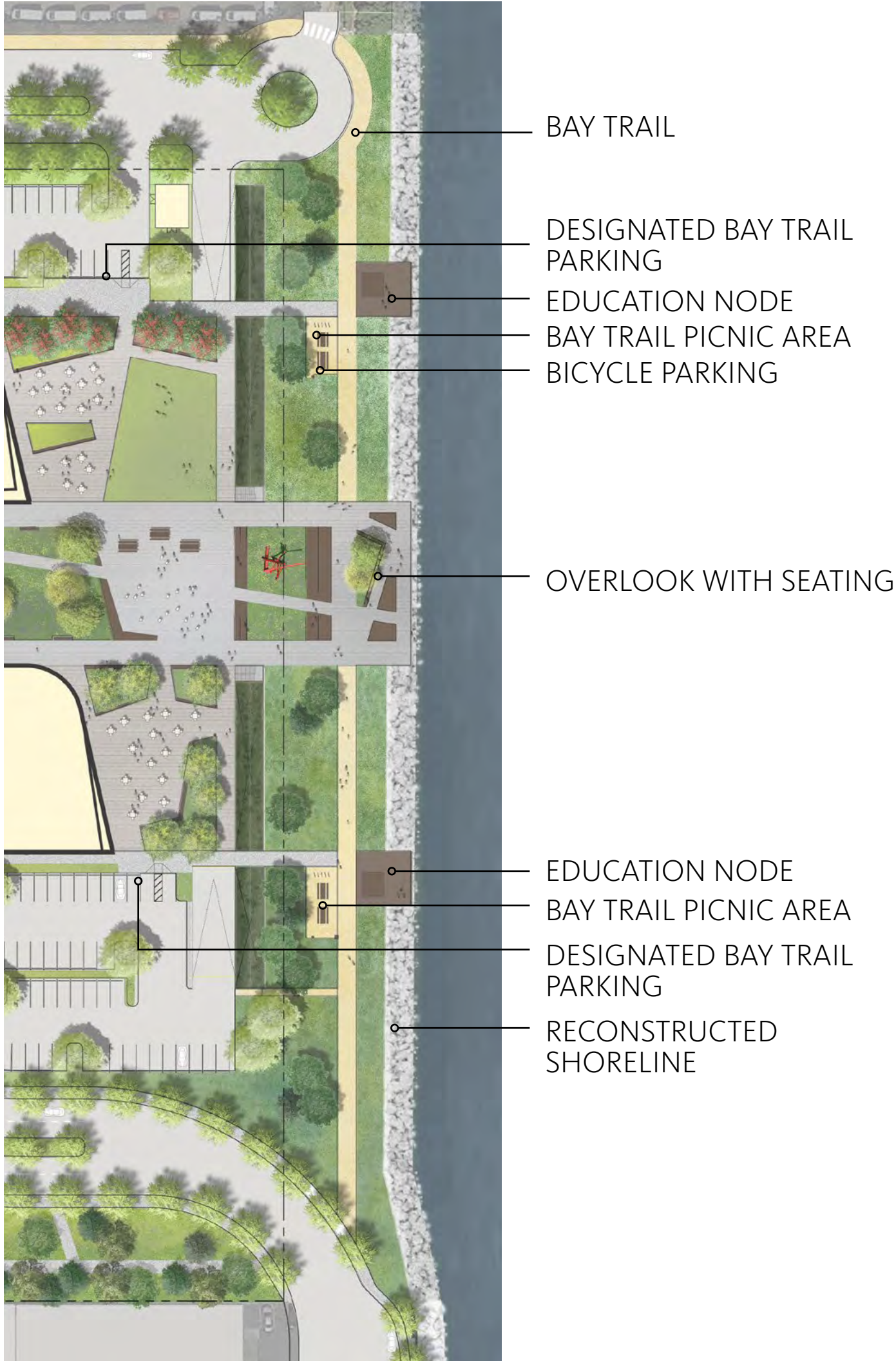
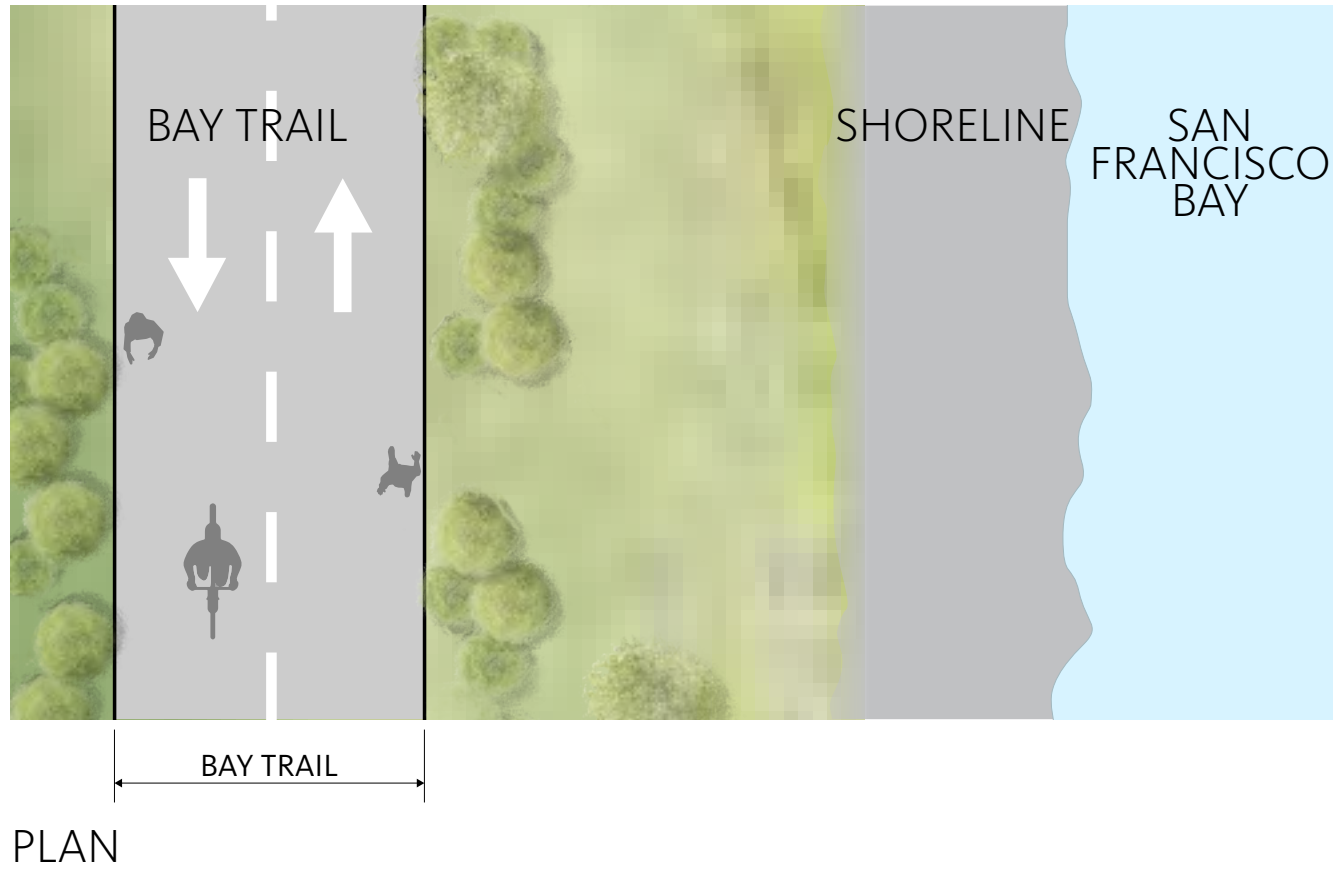
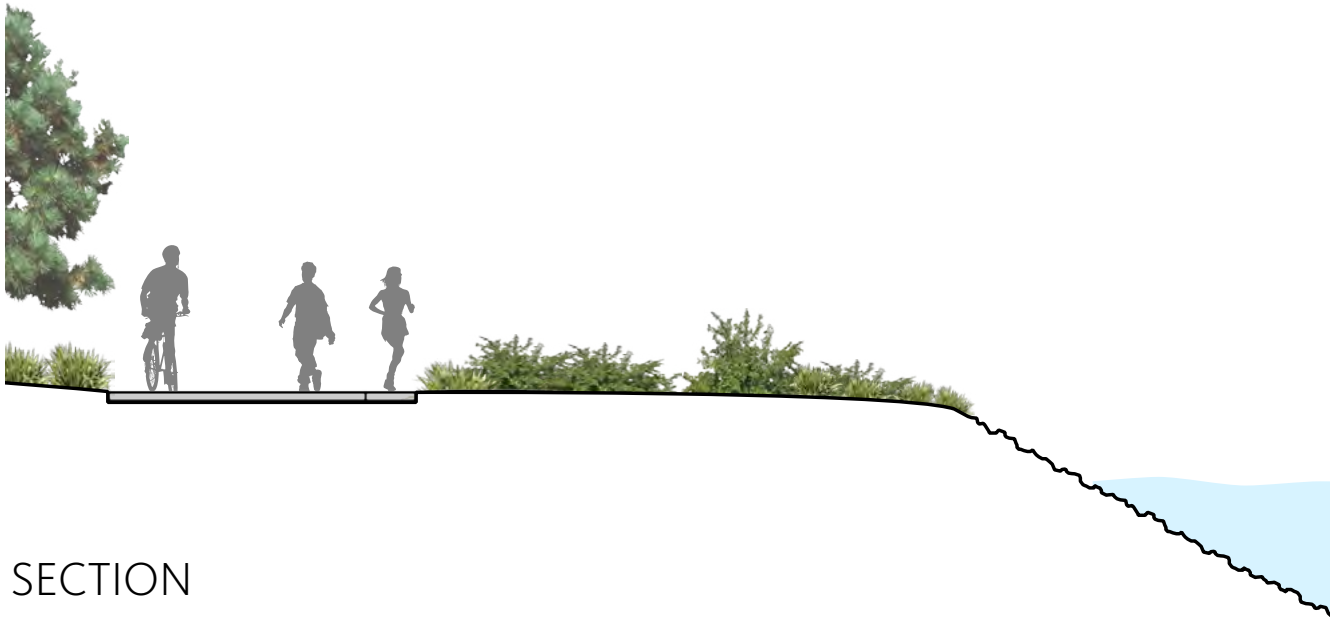


PROMENADE SEATING



PROMENADE HARDSCAPE

BAY TRAIL DESIGN



OPEN SPACE DESIGN
EAST SHORELINE

DINING PLAZA

BUILDING 1

OUTDOOR ROOM
PLAZA

BUILDING 2

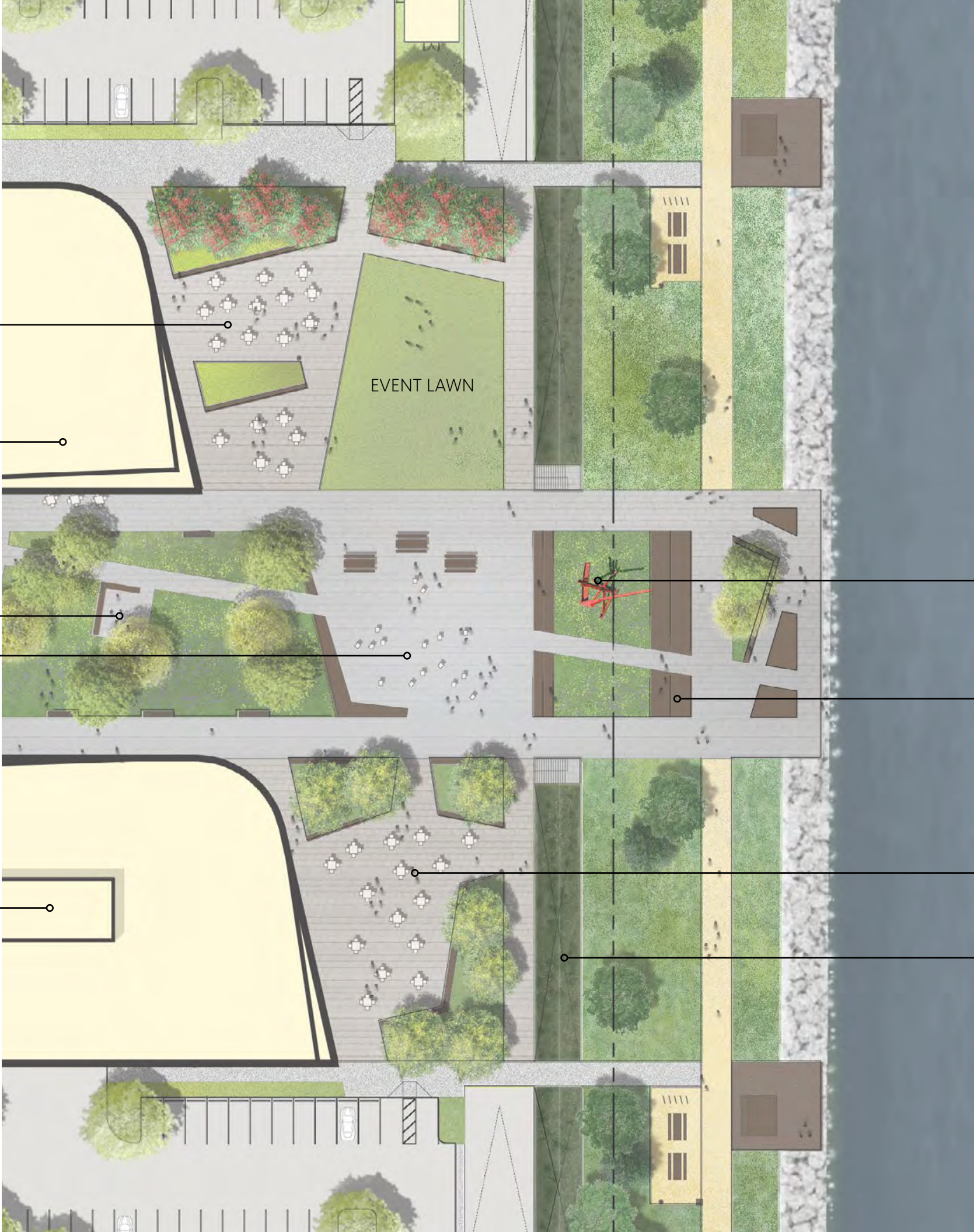
EVENT LAWN

SCULPTURE

OBSERVATION
PLATFORM

CONFERENCE PLAZA

STORMWATER
TREATMENT
PLANTER



SANCHEZ CHANNEL

WEST SHORELINE

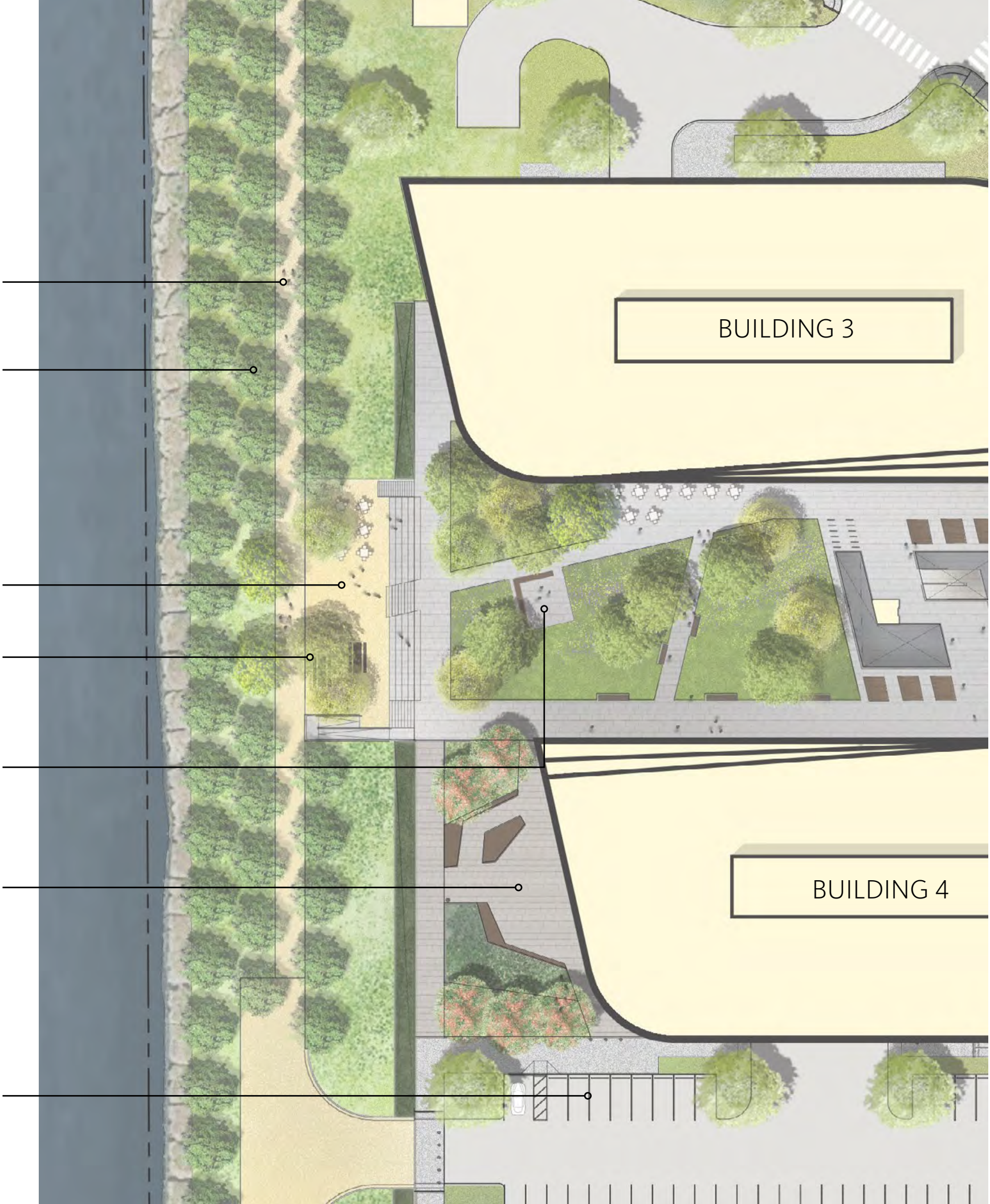
PUBLIC TRAIL
TREES FOR WIND PROTECTION

SANCHEZ CHANNEL PLAZA
BICYCLE PARKING

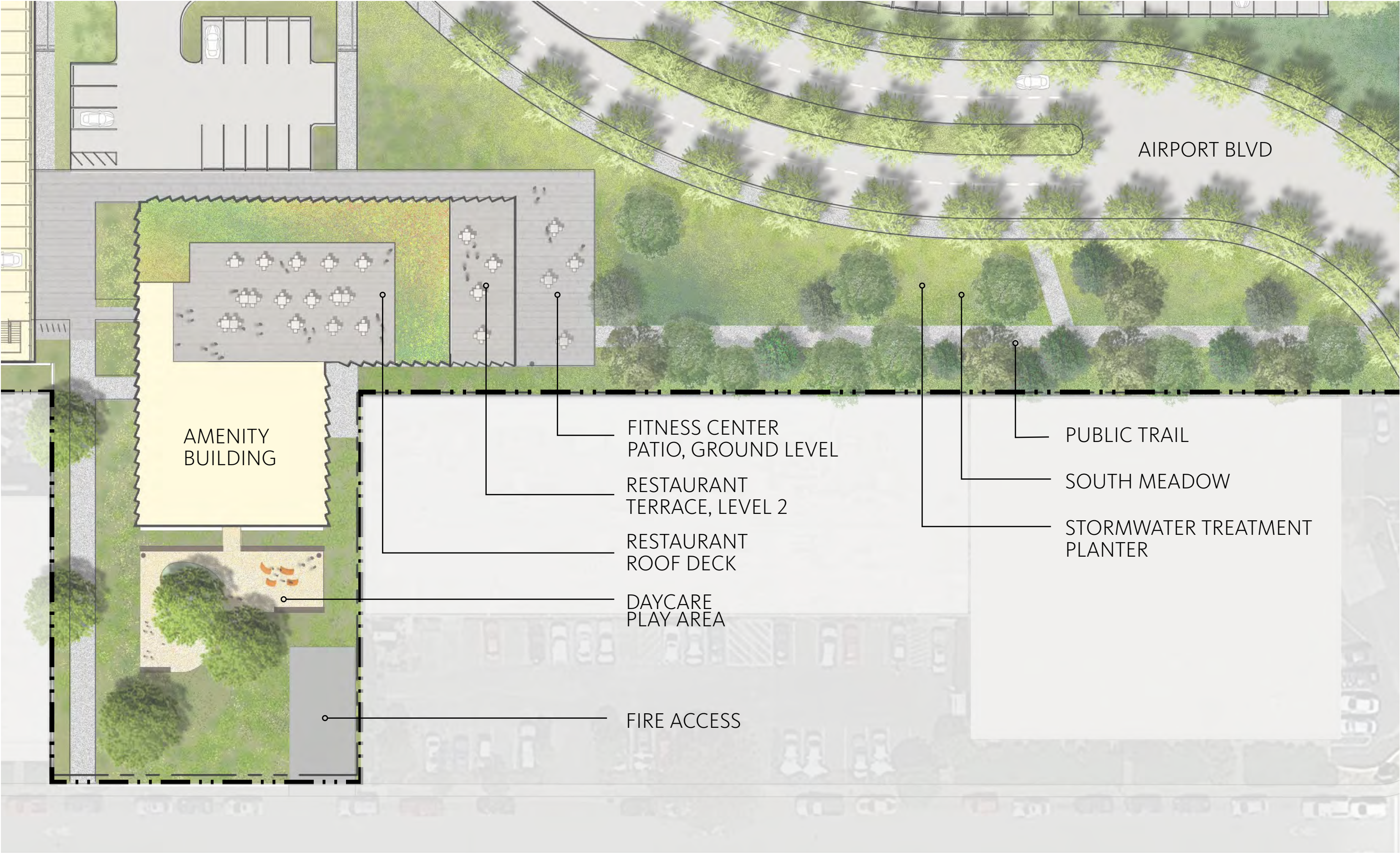
OUTDOOR ROOM

PLAZA

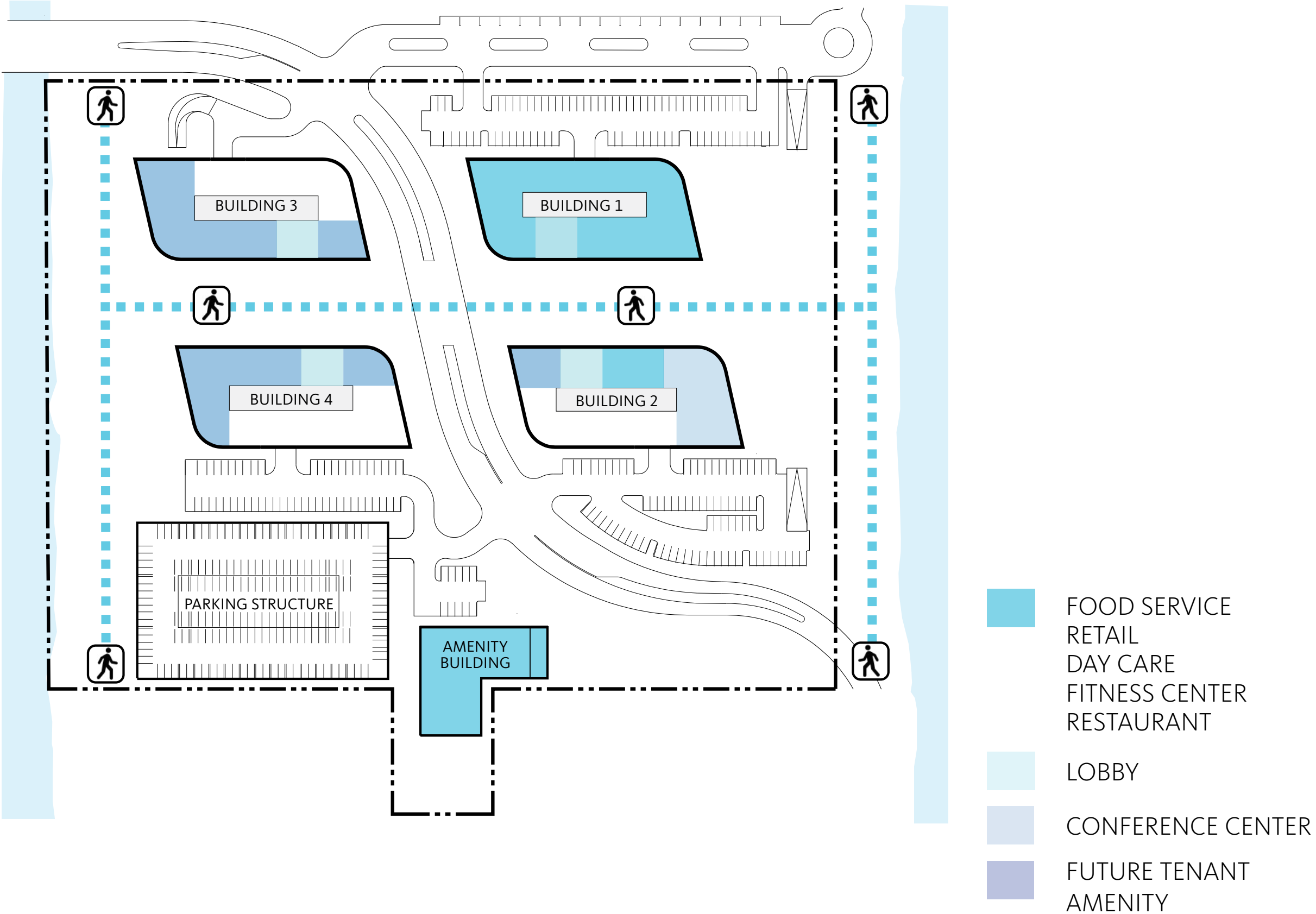
DESIGNATED BAY TRAIL PARKING



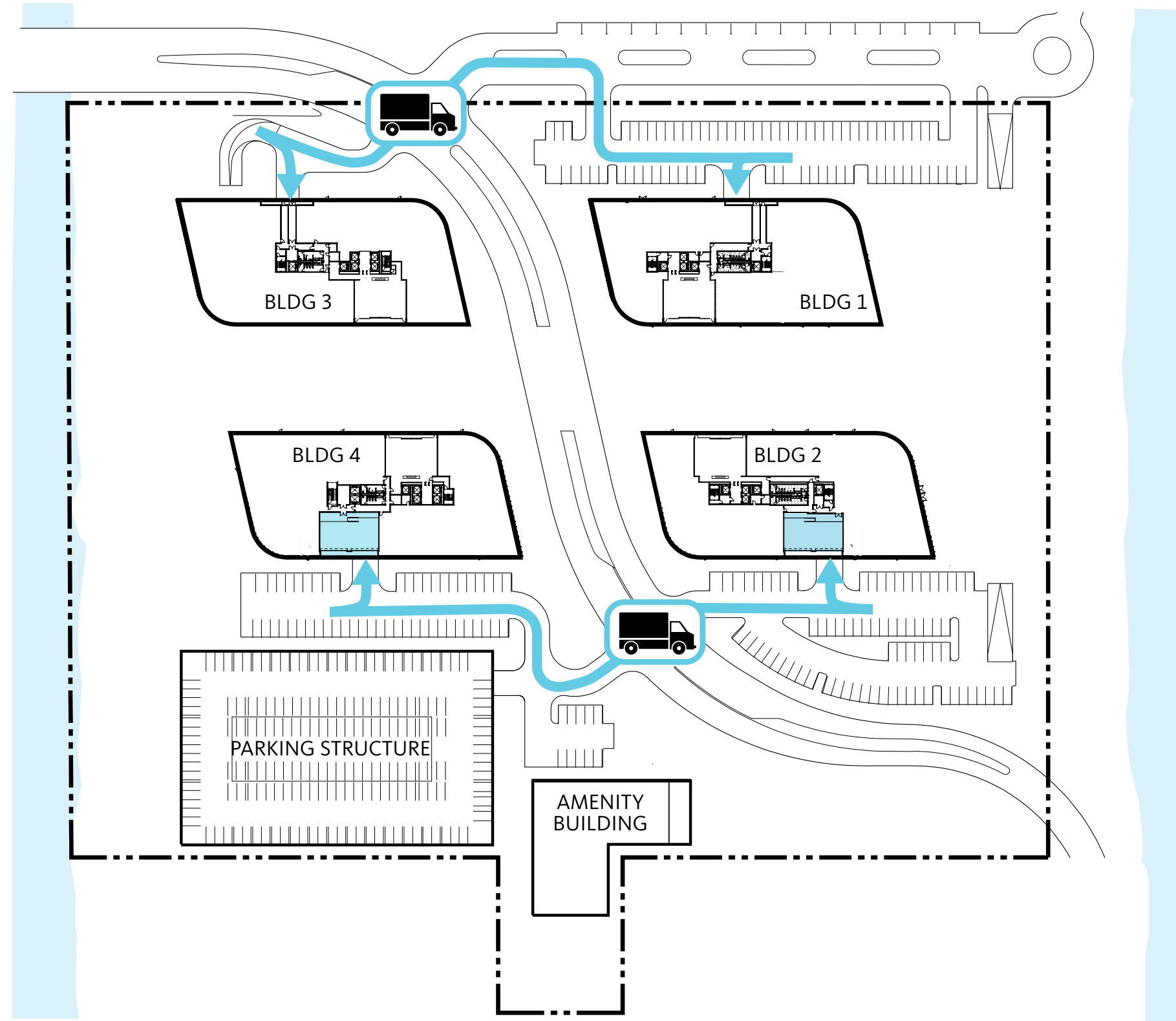
AMENITY BUILDING



AMENITIES: CONCENTRATE AMENITIES AT PEDESTRIAN PROMENADE TO ACTIVATE BAY TRAIL



SERVICE ACCESS

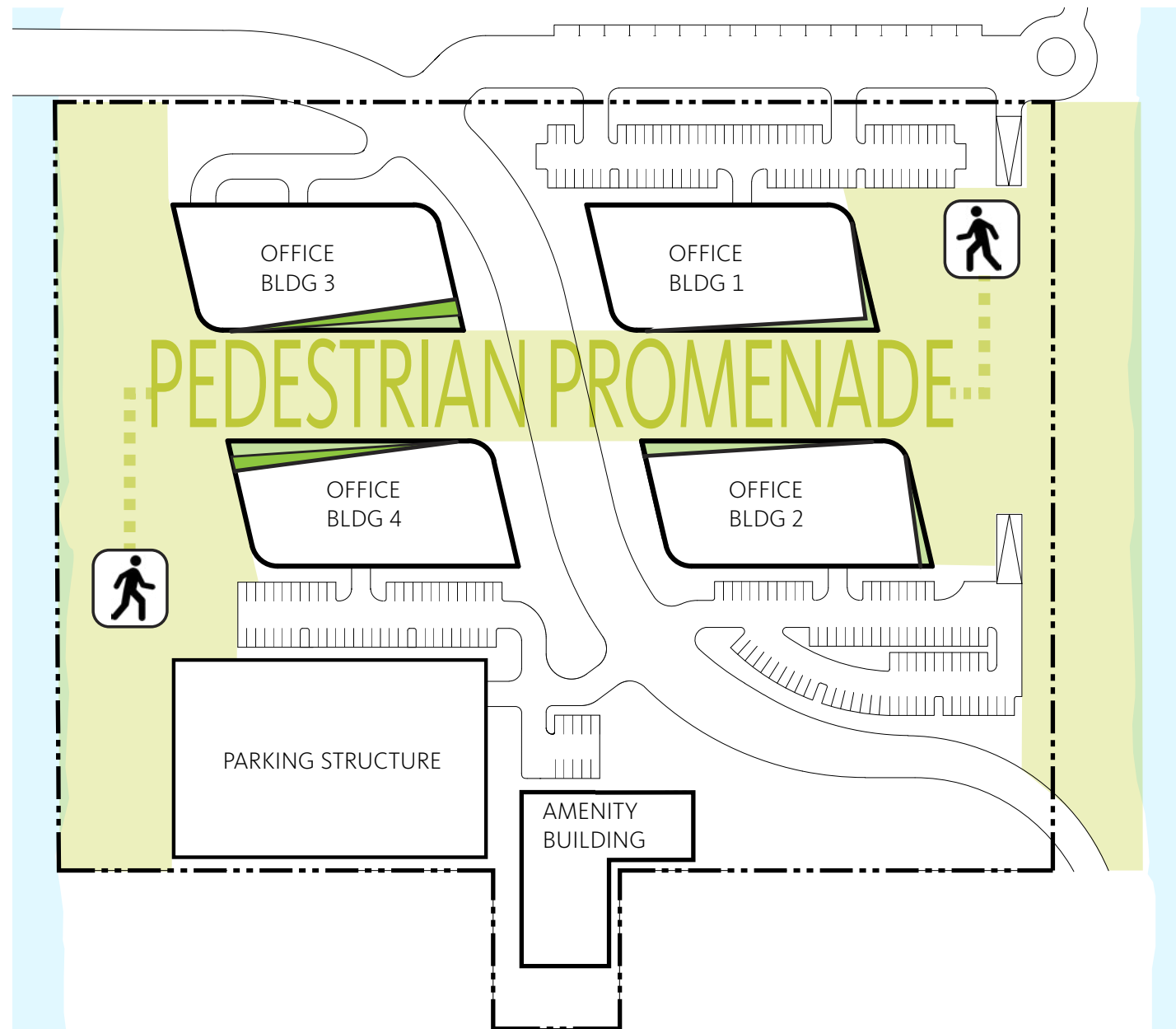


- ALL WASTE MANAGEMENT IS LOCATED INSIDE BUILDINGS 2 & 4
- ALL BUILDINGS HAVE SHIPPING AND RECEIVING

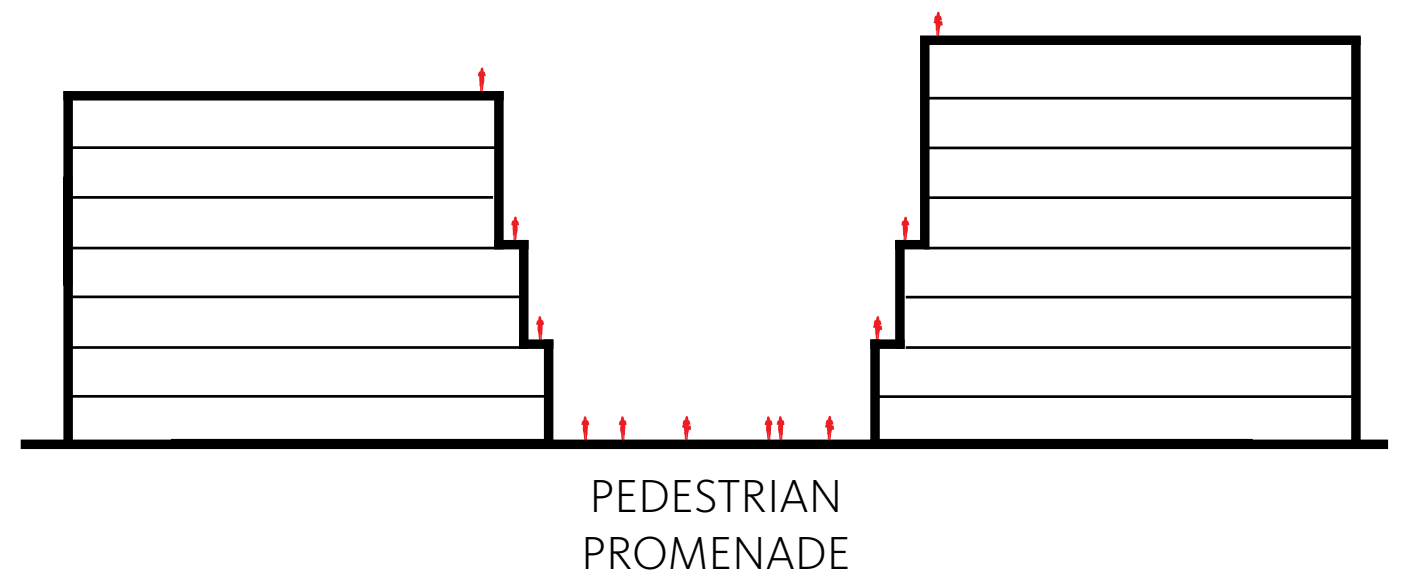
A photograph of a bright sun low on the horizon over a body of water, with a shimmering reflection on the surface.

...INSPIRED BY THE BAY...

SITE DESIGN CONCEPT

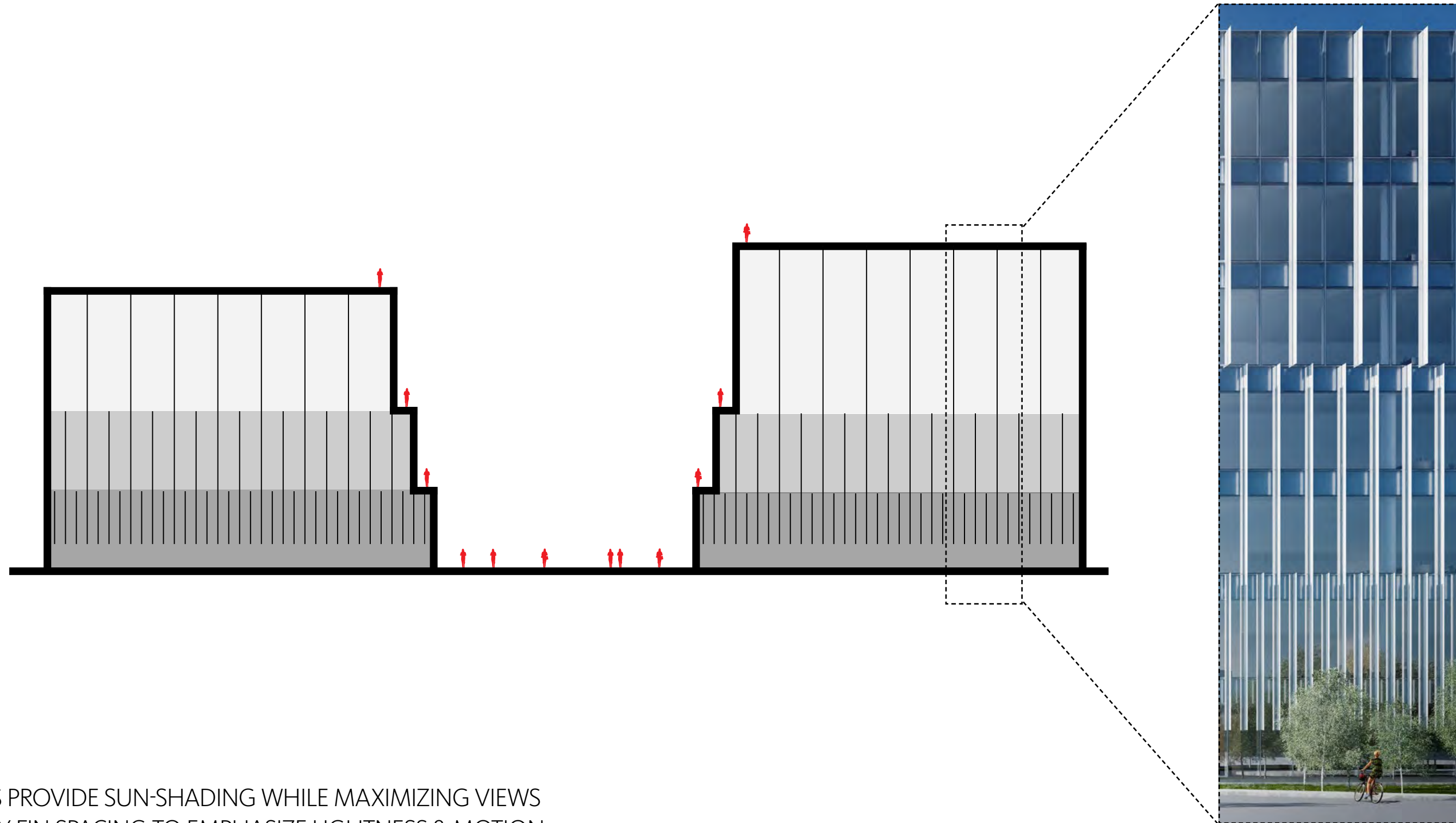


- CAR-FREE, PEDESTRIAN PROMENADE
- MOVE BUILDINGS 1 & 2 WEST TO CREATE MORE OPEN SPACE ALONG THE BAY



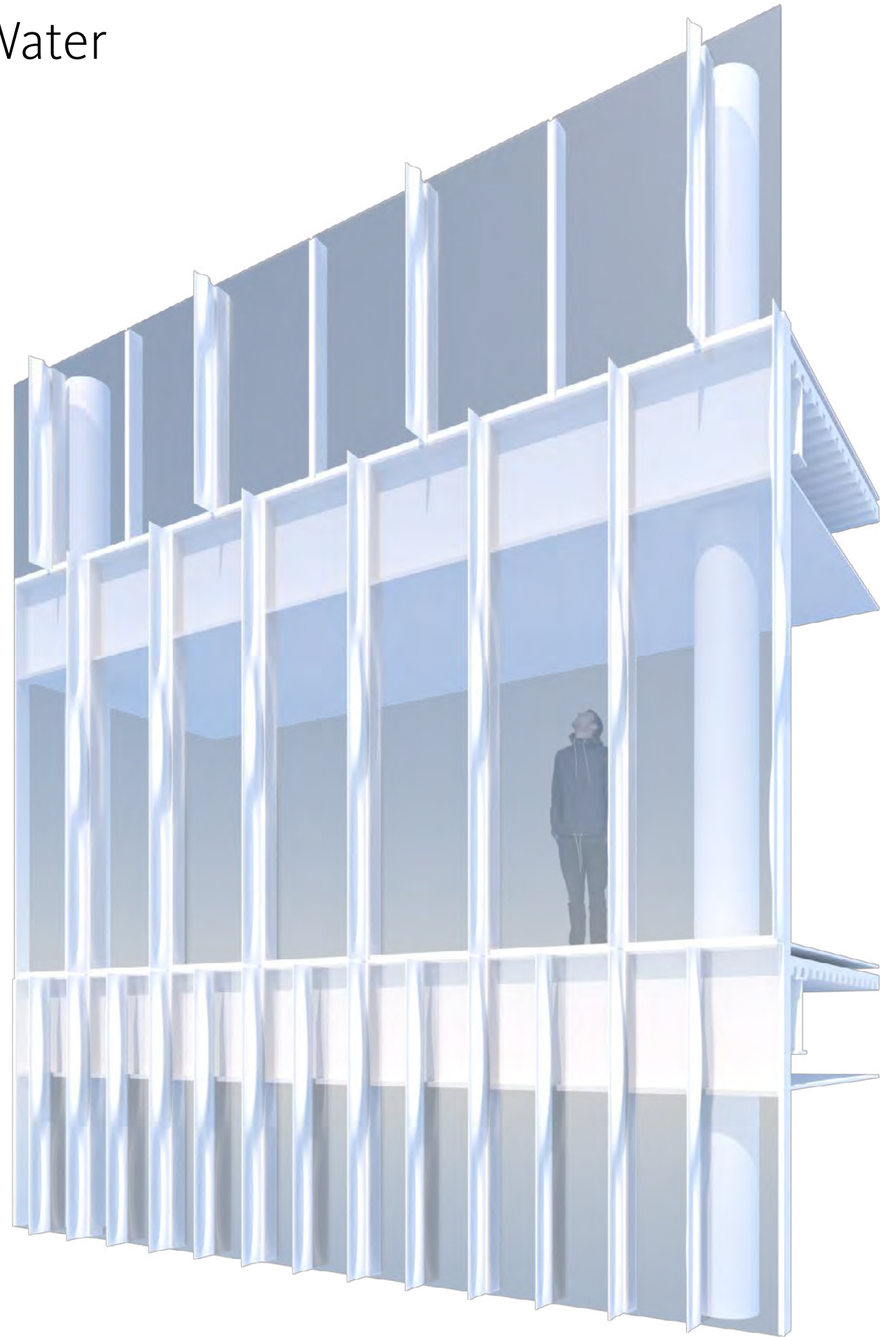
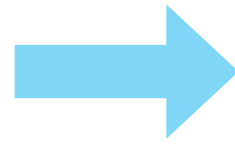
- BUILDING SETBACKS ACTIVATE PEDESTRIAN PROMENADE
- OPEN TO DAYLIGHT AND VIEWS
- PROVIDE OUTSIDE TERRACE AMENITY TO TENANT
- ESTABLISH PEDESTRIAN SCALE STREET WALL

OFFICE DESIGN CONCEPT: Inspired by Light and Water



- FINS PROVIDE SUN-SHADING WHILE MAXIMIZING VIEWS
- VARY FIN SPACING TO EMPHASIZE LIGHTNESS & MOTION
- BALANCE ENERGY REQUIREMENTS WITH DAYLIGHT & VIEWS

OFFICE DESIGN CONCEPT: Inspired by Light and Water





SANCHEZ CHANNEL PLAZA



PEDESTRIAN PROMENADE LOOKING AT COYOTE POINT



BAY SIDE DINING & EVENT PLAZA

A photograph of a sunset over the ocean. The sun is a large, bright, glowing orb in the upper center of the frame, casting a long, shimmering path of light across the dark, rippling water. The sky is a pale, hazy blue, and the water is a deep, dark blue with visible ripples. The overall mood is peaceful and serene.

THANK YOU