



CONSTRUCTION CHECKLIST

- ☐ 1. Conduct daily site inspections.
- ☐ 2. Maintain construction entrance/exit and conduct street sweeping to prevent sediment leaving the construction site.
- ☐ 3. Protect landscaping and stockpiled soil materials from wind and rain by storing them under tarps.
- ☐ 4. Label and store hazardous materials in sealed containers and on top of secondary containment.
- ☐ 5. Cover open dumpsters securely with a tarp when not in use or if raining.
- ☐ 6. Inspect portable toilets for leaks and place them within the construction site.
- ☐ 7. Install perimeter controls around the site, such as staking fiber rolls into the ground or installing silt fences.
- ☐ 8. Protect all nearby storm drains, such as installing filter fabric or using gravel bags, to prevent sediments from entering the drain during construction. Sand bags may be temporarily removed if flooding will occur because of them.
- ☐ 9. Provide a contained and lined pit for washing concrete, paint, or stucco.
- ☐ 10. Keep the Stormwater Construction Pollution Prevention Permit at the work site.
- ☐ 11. Educate workers about these best management practices.

ONLY RAIN DOWN THE STORM DRAIN



When it rains, stormwater washes over the loose soil and debris on a construction site. As this water flows over the site, it can pick up pollutants like sediment, oil, and cement wash and transport them to a nearby storm drain. Our storm drains connect to local creeks and anything that enters these drains will flow directly to the San Francisco Bay. That's why it is important to have proper stormwater protection in place so that construction can proceed in a way that protects our water and the environment.

The City of Burlingame Storm Water Management and Discharge Control Ordinance (BMC 15.14) establishes water pollution control and prevention requirements for construction and other activities. **Dumping or discharge into the storm drains is prohibited.** Construction sites are required by law to prevent pollutants from leaving the construction site.

CITY OF BURLINGAME

Public Works Department
501 Primrose Road
Burlingame, CA 94010
650-558-7230
www.burlingame.org/stormwater



BEST MANAGEMENT PRACTICES FOR CONSTRUCTION SITES



10 Steps to Prevent Stormwater Pollution at Your Construction Site

Keep it clean! Spills and sediment from work sites can flow into storm drains and pollute local creeks.

- 1 Protect Any Areas Reserved for Landscaping or Infiltration and Preserve Existing Trees**
Save time and money by preserving existing mature trees during construction. Protect stockpiled landscaping materials from wind and rain by storing them under tarps all year-round. This will help stabilize the construction site and minimize the amount of runoff during and after construction activity.

- 2 Stockpile Your Soil**
Operators should protect all soil storage piles from run-on and runoff. Berm and cover stockpiles of sand, dirt, or other construction material with tarps when rain is forecast or if not actively used.

- 3 Protect Construction Materials from Run-On and Runoff**
Store hazardous materials and wastes in water tight containers, place containers on top of secondary containment, and cover them at the end of every work day or during wet weather.

- 4 Designate Waste Disposal Areas and Portable Toilets**
Cover dumpsters securely with tarps at the end of every work day and during wet weather. Dispose of all hazardous wastes properly and recycle whenever possible. Portable toilets must have drip pans and be on site.

- 5 Install Perimeter Controls around the Property Lot Line**
Establish and maintain effective perimeter controls, such as fiber rolls, silt fences, or gravel bags around the site.

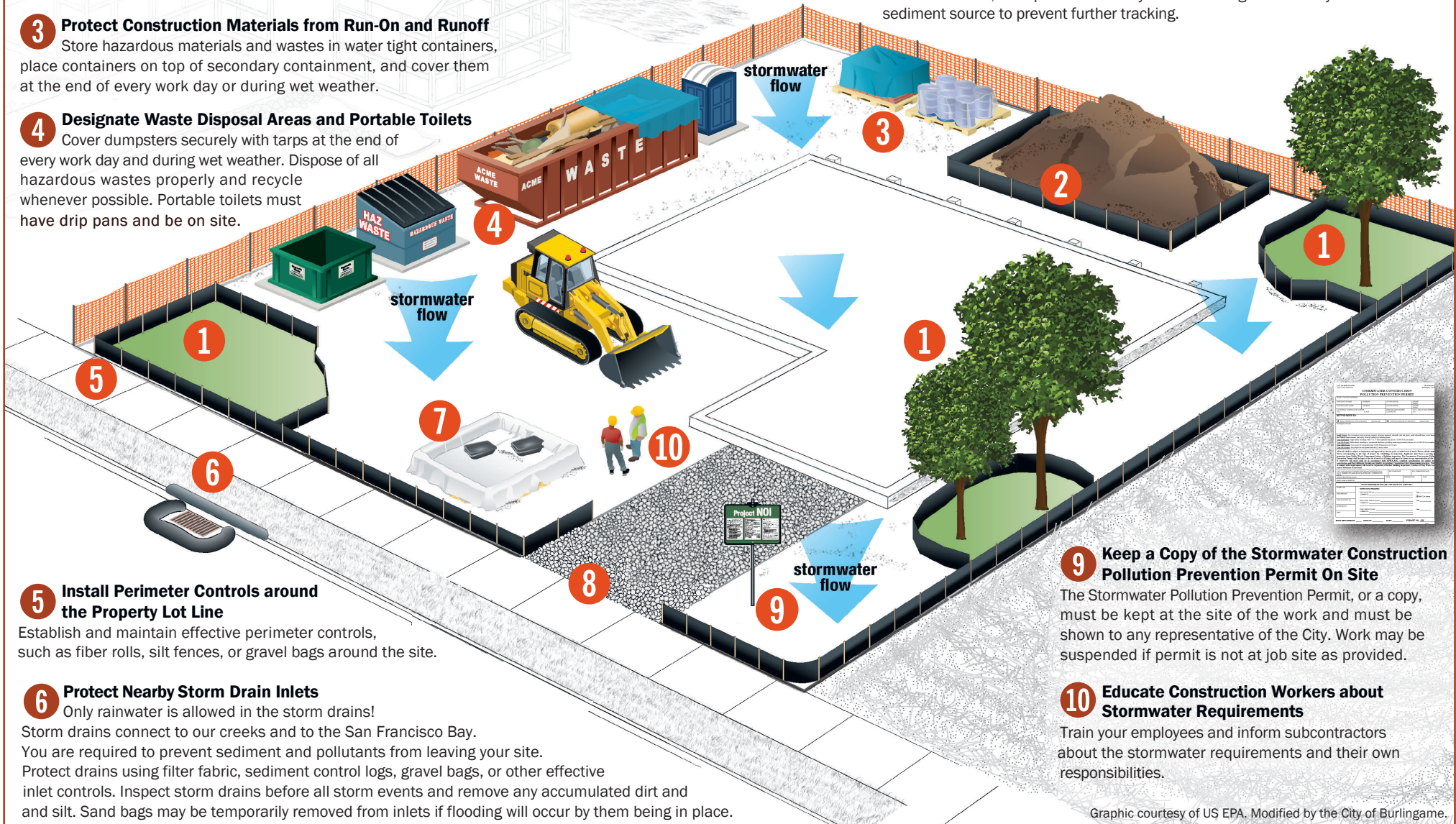
- 6 Protect Nearby Storm Drain Inlets**
Only rainwater is allowed in the storm drains!
Storm drains connect to our creeks and to the San Francisco Bay. You are required to prevent sediment and pollutants from leaving your site. Protect drains using filter fabric, sediment control logs, gravel bags, or other effective inlet controls. Inspect storm drains before all storm events and remove any accumulated dirt and silt. Sand bags may be temporarily removed from inlets if flooding will occur by them being in place.

- 7 Install a Concrete/Stucco Washout Basin**
Designate a leak-proof basin lined with plastic for washing out used containers of concrete, paint, or stucco. Never wash excess concrete, paint, or stucco residue down a storm drain or into a creek!

- 8 Maintain and Stabilize All Construction Entrances and Exits**
Minimize sediment track-out from vehicles exiting your site by maintaining an exit pad made up of crushed rock spread over geotextile fabric. If sediment track-out occurs, sweep or vacuum any street tracking immediately and secure sediment source to prevent further tracking.

- 9 Keep a Copy of the Stormwater Construction Pollution Prevention Permit On Site**
The Stormwater Pollution Prevention Permit, or a copy, must be kept at the site of the work and must be shown to any representative of the City. Work may be suspended if permit is not at job site as provided.

- 10 Educate Construction Workers about Stormwater Requirements**
Train your employees and inform subcontractors about the stormwater requirements and their own responsibilities.



Graphic courtesy of US EPA. Modified by the City of Burlingame.