



The City of Burlingame

CITY HALL - 501 PRIMROSE ROAD
BURLINGAME, CALIFORNIA 94010-3997

CALIFORNIA DRIVE ROUNDABOUT IMPROVEMENTS – **CITY PROJECT NO. 83920**

ADDENDUM NO. 3

February 13, 2018

NOTICE TO ALL PLAN HOLDERS/BIDDERS

BID OPENING DATE: FEBRUARY 21, 2018

This addendum and its attachments shall become a part of the plans and specifications and shall apply to the bid proposals for the above-named project. The bidder(s) shall notify all affected subcontractors, material suppliers, and others to incorporate necessary cost updates, to the bid proposal and the work changes affected by this Addendum.

In the event of conflict between plans and specifications and this addendum, the addendum shall take precedence. Any modifications necessary to incorporate the revisions shall be included in the appropriate bid prices. The bid documents are hereby corrected, modified, and/or amended in the following manner:

RESPONSES TO BIDDER QUESTIONS

- 1. Specification is not clear on method of payment for Excavation, Subgrade preparation and Aggregate Base under all minor concrete work. On sheet TS-49 there is a reference for Class 2 Aggregate Base (Add to Section 73-1.02A) and last paragraph (Replacing 1st Paragraph of Section 73-1.03B) which require excavation below subgrade elevation. May be it meant to be excavation below bottom of concrete. It is only calling for 3". Curb & Gutter AB cushion varies between 6" and 12" for mountable curb and sidewalk AB cushion is showing at 4" (0.33').*

Response: See changes as provided in TECHNICAL SPECIFICATIONS section below. The specifications are modified to remove the requirement to over-excavate under curb and sidewalk unless soft or spongy material is encountered.

- 2. There are no detail showing dimensions for cut off wall (Bid Item 65).*

Response: Sheet 19 (CD-09) detail for "Planter Wall Detail" renamed to "Cut-Off Wall Detail". See attached revised Sheet 19 (CD-09) for cut-off wall detail.

3. *Demolition plans DM-1 shows curb & gutter and sidewalk in the middle island as AC instead of concrete. Do we get paid for this demo work on bid items 29 & 30?*

Response: The curb & gutter and sidewalk in the middle island is included in the payment for bid items 29 and 30. Removal of material below the existing AB will be measured and paid for as Roadway Excavation (bid item 23)

4. *Specification page TS-53 is missing in the Special Provisions.*

Response: There is no page TS-53 in the originally issued Special Provisions. The last page of the Special Provisions, as originally advertised, is TS-52.

5. *Is the drip irrigation lines sub-surface of on grade?*

Response: Drip irrigation lines are to be installed subsurface and according to manufacturer's recommendations.

6. *The specified irrigation controller package does not come with a enclosure and pedestal and there is no detail drawing for the controller. Considering the location, it is typical to have a steel enclosure and pedestal mounted on a concrete pad.*

Response: The controller is to be installed in a stainless-steel pedestal per manufacturer's recommendations. The "S1" part of the specified Calsense Controller (CS3-16-S1/CS3-LR/LR-STUBY/FM 1B) per plans is a complete, turnkey factory assembled Heavy-Duty stainless-steel pedestal enclosure.

7. *The irrigation water meter appears to be existing on utility plan sheet U-01, can this be confirmed? If the meter is not existing can a make and model be stated? Also, will a water main tap be necessary?*

Response: City to furnish new irrigation water meter and contractor is to install. See changes in TECHNICAL SPECIFICATIONS section below.

8. *What minor concrete items require integral color?*

Response: The concrete truck apron and stamped concrete as shown on Sheet HS-01 will be colored concrete. The curbs are not to be colored concrete. All colored concrete will be the sand color as specified on the HS-sheets.

Notice is hereby given that the following revisions are made a part of the above Contract Documents:

PROPOSAL

1. **Replace BID SHEET, Proposal pages 11-13 with the attached pages.**

TECHNICAL SPECIFICATIONS

2. **Replace the first paragraph of section 73-1.03B with:**

Remove soft or spongy basement material to a depth of 6 inches below subgrade elevation for curbs, gutter depressions, island paving, and driveways, and 3 inches below subgrade elevation for sidewalks and curb ramps. Backfill and compact with Class 2 aggregate base material to produce a stable foundation.

3. **Replace SECTION 20-2 IRRIGATION with:**

Furnish and Install Irrigation System shall be measured per Lump Sum.

The Contract lump sum price paid for Furnish and Install Irrigation System shall include, but not be limited to, full compensation for furnishing all labor, materials, tools, and equipment and performing all work necessary to complete, maintain, plant establishment work and guarantee the irrigation work described or specified in the contract documents including any temporary irrigation and permanent irrigation, reduced-pressure back-flow preventer, ball valves, drip valve assembly, electric control valves, quick couplers, control wires, pull boxes, valve boxes, water meter boxes, all piping and sleeves, electrical conduits, irrigation heads, drip emitters, bubblers, drip irrigation equipment, connection from electrical service to irrigation electrical meter, connection from meter to irrigation controller(s), installation of City-furnished water meter, installation of controller enclosure, concrete pads, preparation, correction, reproduction and lamination of "as-built" drawings, controller charts, assembly and submittal of the check list and operation and maintenance manuals and all appurtenances to the aforementioned items, as well as, and project guarantees.

Provide a schedule of values for Furnish and Install Irrigation System within 10 days of notification of award of bid.

At a minimum, the schedule of values must include:

- Irrigation Backflow
- Irrigation Controller
- Drip Irrigation
- Water Meter Installation (City-furnished water meter)
- Water Meter Box and Lid

BID DRAWING PLAN SET

4. **Replace SHEET 11 (CD-01) with attached revised SHEET 11.**

Date: February 13, 2018
Addendum No. 3
CALIFORNIA DRIVE ROUNDABOUT IMPROVEMENTS
CITY PROJECT NO. 83920

5. **Replace SHEET 13 (CD-03) with attached revised SHEET 13.**
6. **Replace SHEET 19 (CD-09) with attached revised SHEET 19.**
7. **Replace SHEET 26 (U-01) with attached revised SHEET 26.**

This Addendum consists of 13 pages.

All bidders shall acknowledge receipt and acceptance of Addendum No. 3 by signing in the space provided at the end of this Addendum and submitting the signed Addendum with their proposal. Failure to do so may constitute grounds for rejection of the bid.

Very truly yours,

Donald Chang, P.E.
Senior Civil Engineer

CONTRACTOR SIGNATURE

DATE

COMPANY NAME

CALIFORNIA DRIVE ROUNDABOUT PROJECT
CITY PROJECT NO. 83920
BID SHEET
(AS MODIFIED BY ADDENDUM 3)

BID SCHEDULE:

ITEM NO.	ITEM DESCRIPTION	ESTIMATED QUANTITY	UNIT	UNIT PRICE	ITEM TOTAL
1	MOBILIZATION	1	LS		
2	LEAD COMPLIANCE PLAN	1	LS		
3	SOIL TESTING	1	LS		
4	PROGRESS SCHEDULE (CRITICAL PATH METHOD)	1	LS		
5	PREPARE STORM WATER POLLUTION PREVENTION PLAN	1	LS		
6	STORM WATER ANNUAL REPORT	1	EA	\$2,000.00	\$2,000.00
7	STORM WATER SAMPLING AND ANALYSIS DAY	9	EA		
8	RAIN EVENT ACTION PLAN	15	EA	\$500.00	\$7,500.00
9	CONSTRUCTION AREA SIGNS	1	LS		
10	CONSTRUCTION PROJECT FUNDING SIGN	2	EA		
11	UTILITY POTHOLING	10	EA		
12	CONSTRUCTION STAKING (CONTRACTOR PROVIDED)	1	LS		
13	RECORD OF SURVEY	1	LS		
14	SURVEY MONUMENT	1	EA		
15	RESIDENT ENGINEER'S FIELD OFFICE	1	LS		
16	CLEARING AND GRUBBING	1	LS		
17	TRAFFIC CONTROL SYSTEM	1	LS		
18	PORTABLE CHANGEABLE MESSAGE SIGN (EA)	2	EA		
19	CHANNELIZER (SURFACE MOUNTED)	126	EA		
20	TEMPORARY RAILING (TYPE K)	940	LF		
21	CRASH CUSHION (IN-LINE)	5	EA		
22	TEMPORARY SAFETY LIGHTING	1	LS		
23	ROADWAY EXCAVATION (F)	2,300	CY		
24	CLASS I DISPOSAL	100	CY		
25	CLASS II DISPOSAL	100	CY		
26	FURNISH AND INSTALL IRRIGATION SYSTEM	1	LS		
27	FURNISH AND INSTALL LANDSCAPING AND BIOFILTRATION AREAS	1	LS		
28	PLANT ESTABLISHMENT WORK (TYPE 2, 365 DAYS)	1	LS		
29	REMOVE CONCRETE (CURB AND GUTTER)	1,365	LF		
30	REMOVE CONCRETE (SIDEWALK)	6,725	SQFT		
31	REMOVE CONCRETE (MEDIAN CURB AND PAVING)	235	SQFT		
32	REMOVE INLET	2	EA		
33	REMOVE PIPE (LF)	6	LF		
34	MODIFY INLET TO MANHOLE	1	EA		

35	MODIFY INLET (CAP)	2	EA		
36	ADJUST MANHOLE TO GRADE (STORM DRAIN)	4	EA		
37	ADJUST MANHOLE TO GRADE (SEWER)	5	EA		
38	ADJUST FIRE HYDRANT TO GRADE	2	EA		
39	FURNISH AND INSTALL UTILITY BOX (CITY-OWNED)	6	EA		
40	SALVAGE PARKING METER	12	EA		
41	SALVAGE STREET LIGHT	5	EA		
42	RELOCATE DECORATIVE STREET LIGHT	1	EA		
43	SALVAGE RRFB SYSTEM	2	EA		
44	SALVAGE ROADSIDE SIGN	24	EA		
45	ADJUST WATER VALVE BOX TO GRADE	8	EA		
46	REPLACE ROADSIDE SIGN PANEL ON EXISTING POST	3	EA		
47	COLD PLANE ASPHALT CONCRETE PAVEMENT	7,220	SQYD		
48	LOWER AND RAISE MANHOLE	10	EA		
49	LOWER AND RAISE UTILITY COVER	9	EA		
50	AGGREGATE BASE (CLASS 2)	1,325	TON		
51	PAVEMENT FAILURE REPAIR	500	TON		
52	HOT MIX ASPHALT (TYPE A)	1,900	TON		
53	12" PVC C900 PIPE	500	LF		
54	CHANNEL DRAIN	16	LF		
55	DRAINAGE INLET (TYPE I)	8	EA		
56	DRAINAGE INLET (TYPE GO)	5	EA		
57	STORM DRAIN MANHOLE	2	EA		
58	MINOR CONCRETE (MOUNTABLE CURB)	10	CY		
59	MINOR CONCRETE (CURB AND GUTTER)	580	LF		
60	MINOR CONCRETE (MEDIAN CURB ON PCC SLAB, TYPE A1-6)	22	CY		
61	MINOR CONCRETE (MEDIAN CURB, TYPE A1-6)	695	LF		
62	MINOR CONCRETE (SIDEWALK)	11,960	SQFT		
63	MINOR CONCRETE (TRUCK APRON)	2,070	SQFT		
64	MINOR CONCRETE (BUS PAD)	2,525	SQFT		
65	MINOR CONCRETE (CUT-OFF WALL)	590	LF		
66	MINOR CONCRETE (DEEPENED CURB AND GUTTER)	416	LF		
67	MINOR CONCRETE (STAMPED CONCRETE)	1,175	SQFT		
68	PEDESTRIAN RAILING	85	LF		
69	ROADSIDE SIGN - ONE POST (METAL)	50	EA		
70	THERMOPLASTIC TRAFFIC STRIPE (DETAIL 9)	2,915	LF		
71	THERMOPLASTIC TRAFFIC STRIPE (DETAIL 22)	360	LF		
72	THERMOPLASTIC TRAFFIC STRIPE (DETAIL 25)	750	LF		
73	THERMOPLASTIC TRAFFIC STRIPE (DETAIL 27B)	1,005	LF		
74	THERMOPLASTIC TRAFFIC STRIPE (DETAIL 29)	560	LF		
75	THERMOPLASTIC TRAFFIC STRIPE (DETAIL 32)	560	LF		
76	THERMOPLASTIC TRAFFIC STRIPE (DETAIL 38)	290	LF		

77	THERMOPLASTIC TRAFFIC STRIPE(DETAIL 38A)	1,095	LF		
78	THERMOPLASTIC TRAFFIC STRIPE (DETAIL 39A)	615	LF		
79	THERMOPLASTIC TRAFFIC STRIPE (DETAIL 40)	50	LF		
80	THERMOPLASTIC PAVEMENT MARKING (WHITE)	1,755	SQFT		
81	PAINT CURB (RED)	190	LF		
82	PAINT CURB (YELLOW)	85	LF		
83	OBJECT MARKER (TYPE P)	11	EA		
84	TRAFFIC SIGNAL LOOP DETECTORS	16	EA		
85	LIGHTING AND ELECTRICAL SYSTEM	1	LS		
86	PEDESTRIAN CROSSING ASSEMBLY	1	LS		
TOTAL BID					

The successful lowest responsible bidder will be determined on the basis of the lowest Total Bid amount.

BIDDING CONTRACTOR'S SIGNATURE: _____

BIDDING CONTRACTOR'S NAME: _____

CONTRACTOR'S LICENSE NUMBER

EXPIRATION DATE

CONTRACTOR'S ADDRESS

CONTRACTOR'S TELEPHONE NO.

DATE

Replace 1st paragraph of section 73-1.02A with:

Comply with section 90-2 "Minor Concrete" except as follows:

1. For all miscellaneous concrete work except valley gutters, mountable curbs and truck aprons, cementitious material content of concrete must be at least 505 lb/cu yd.
2. For valley gutters mountable curbs and truck aprons, cementitious material content of concrete must be at least 590 lb/cu yd.
3. The maximum size of aggregate used for miscellaneous concrete construction shall be 1 inch.

Add to section 73-1.02A:

Class 2 Aggregate base must comply with section 26.

Add to section 73-1.02B:

Install prefabricated detectable warning surface under the requirements of the Department of General Services, Division of State Architect. The finished surfaces of the detectable warning surface shall be free from blemishes.

The manufacturer shall provide a written 5-year warranty for prefabricated detectable warning surfaces, guaranteeing replacement when there is defect in the dome shape, color fastness, sound-on-cane acoustic quality, resilience, or attachment. The warranty period shall begin upon acceptance of the contract.

Add to section 73-1.03A:

Construct sidewalk and curb monolithically. Construct sidewalk and retaining curbs monolithically.

Driveway construction at driveways that provide the sole access to businesses or multiple housing units must be constructed in two phases. Vehicular access must be maintained at all times to these properties. #4 reinforcing bars dowels on 18" c-c must be installed at the cold joint where driveways are constructed in two phases.

Install expansion joints in curbs and sidewalks at all curb returns unless directed by the Engineer. Extend expansion joints and weakened plane joints through adjoining curb and gutter and retaining curbs.

Do not deviate the shape and design of curb ramps and driveways with sidewalk from the standard plans unless noted on the project plans or approved by the Engineer. Do not free form these facilities.

Clean all sawcuts by abrasive blasting or other methods approved by the Engineer.

If new curb, sidewalk or driveway is constructed adjacent to existing curb, sidewalk or driveway, dowel the existing concrete to the new concrete with #4 reinforcing bars as shown.

For new curb ramps, detectable warning surfaces shall be prefabricated tiles set directly in newly poured concrete; surface applied tiles or stamped into surface detectable warning surfaces will not be allowed.

Remove and dispose of existing water meter boxes located within the limits of sidewalk removal. Furnish and install new water meter boxes as part of installing new sidewalk.

SamTrans standard detail "Standard Bus Stop Bus Pad Section" is included in the Appendix to these technical specifications. Construct bus pads in accordance with this detail.

Replace 1st paragraph of section 73-1.03B with:

Remove soft or spongy basement material to a depth of 6 inches below subgrade elevation for curbs, gutter depressions, island paving, and driveways, and 3 inches below subgrade elevation for sidewalks and curb ramps. Backfill and compact with Class 2 aggregate base material to produce a stable foundation.

Bioretention soil will not be measured or paid for separately. Payment for bioretention soil is included in the payment for Furnish and Install Landscaping and Bioretention Areas.

[illegible]

20 LANDSCAPE

Replace section 20 of the RSS with:

20 LANDSCAPE

20-1 GENERAL

Refer to the plans for landscape and irrigation specifications, and for bioretention areas.

Maintain plants from the time of planting until the start of the plant establishment period.

20-2 IRRIGATION

Furnish and Install Irrigation System shall be measured per Lump Sum.

The Contract lump sum price paid for Furnish and Install Irrigation System shall include, but not be limited to, full compensation for furnishing all labor, materials, tools, and equipment and performing all work necessary to complete, maintain, plant establishment work and guarantee the irrigation work described or specified in the contract documents including any temporary irrigation and permanent irrigation, reduced-pressure back-flow preventer, ball valves, drip valve assembly, electric control valves, quick couplers, control wires, pull boxes, valve boxes, water meter boxes, all piping and sleeves, electrical conduits, irrigation heads, drip emitters, bubblers, drip irrigation equipment, connection from electrical service to irrigation electrical meter, connection from meter to irrigation controller(s), installation of City-furnished water meter, installation of controller enclosure, concrete pads, preparation, correction, reproduction and lamination of "as-built" drawings, controller charts, assembly and submittal of the check list and operation and maintenance manuals and all appurtenances to the aforementioned items, as well as, and project guarantees.

Provide a schedule of values for Furnish and Install Irrigation System within 10 days of notification of award of bid.

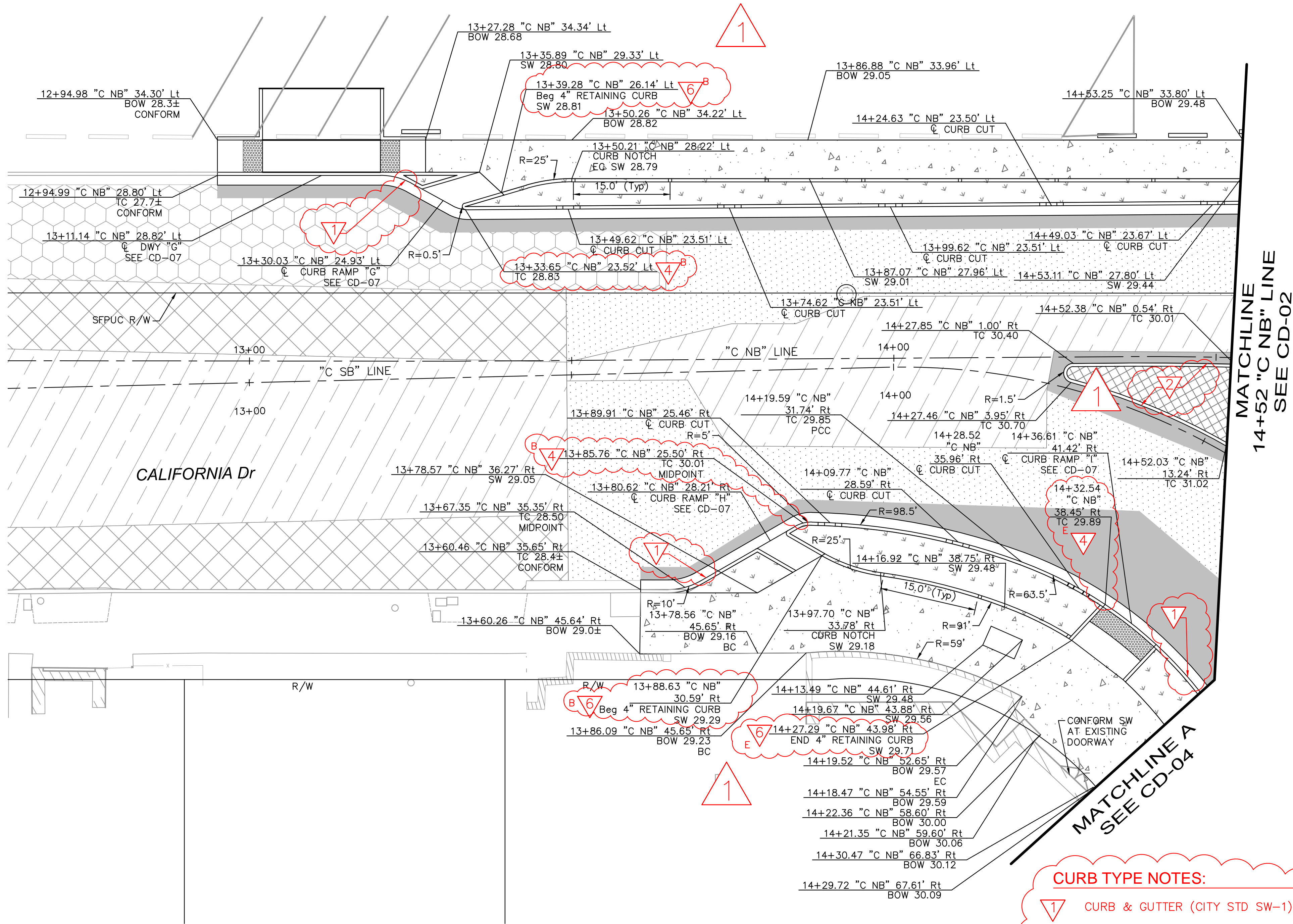
At a minimum, the schedule of values must include:

- Irrigation Backflow
- Irrigation Controller
- Drip Irrigation
- Water Meter Installation (City-furnished water meter)
- Water Meter Box and Lid

20-3 PLANTING

Furnish and Install Landscaping and Bioretention Areas will be measured per Lump Sum.

This document, together with the concepts and designs presented herein, as an instrument of service, is intended only for the specific purpose and client for which it was prepared. Reuse of and improper reliance on this document without written authorization and adaptation by Kimley-Horn and Associates, Inc. shall be without liability to Kimley-Horn and Associates, Inc.



CURB TYPE NOTES:

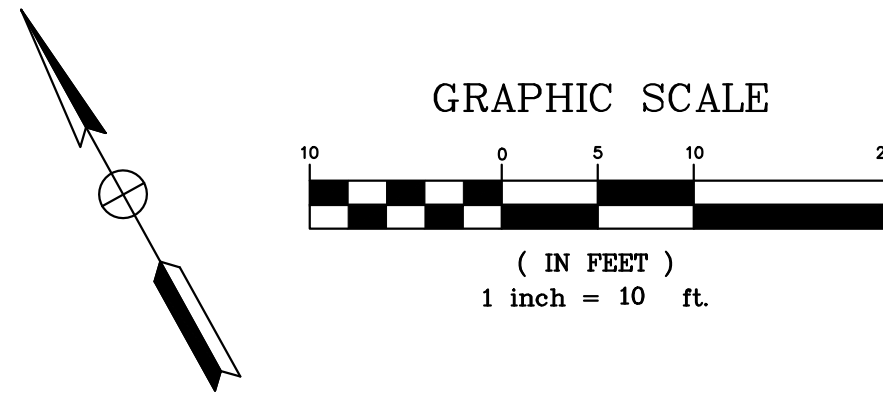
- 1 CURB & GUTTER (CITY STD SW-1)
- 2 MEDIAN CURB, TYPE A1-6
- 3 MEDIAN CURB ON PCC SLAB, TYPE A1-6
- 4 DEEPEND CURB & GUTTER
- 5 MOUNTABLE CURB
- 6 CUT OFF WALL
- 7 PLANTER WALL
- B BEGIN CURB TYPE
- E END CURB TYPE

LEGEND:

- 1 HMA PAVEMENT (SEE TX-02 FOR SECTION DETAILS)
- 2 TRUCK APRON (SEE SHEET CD-09)
- 3 CONCRETE SW/DRIVEWAY
- 4 COLD PLANE & HMA OVERLAY (SEE TX-02 FOR DETAILS)
- 5 COLD PLANE & HMA OVERLAY (SEE TX-02 FOR DETAILS)
- 6 BUS PAD (SEE TX-02 FOR DETAILS)
- 7 HMA OVERLAY (SEE TX-03 FOR DETAILS)
- WEDGE COLD PLANE & HMA OVERLAY (SEE TX-03 FOR DETAILS)
- LANDSCAPING/BIORETENTION AREAS (SEE D-SHEETS AND LS-SHEETS)
- HARDSCAPE (SEE HS-SHEETS)
- DETECTABLE WARNING SURFACE
- ROADSIDE SIGN (SEE SS-SHEETS)
- # PAVEMENT STRUCTURAL SECTION No. (SEE TX-01 FOR DETAILS)

GENERAL NOTES:

- ALL EXISTING SIGNS SHALL BE PROTECTED IN PLACE UNLESS SPECIFIED FOR REMOVAL OR RELOCATION.
- ALL SIGN LOCATIONS ARE APPROXIMATE. FINAL SIGN LOCATIONS SHALL BE APPROVED BY ENGINEER PRIOR TO INSTALLATION.
- ALL EXISTING STRIPING CONFLICTING WITH PROPOSED STRIPING SHALL BE REMOVED BY GRINDING PRIOR TO NEW STRIPING INSTALLATION.
- ALL PEDESTRIAN PATHWAYS WITHIN SPLITTER ISLANDS ARE TO BE 0.35' PCC OVER 0.50' CLASS 2 AB.
- SEE EL-SHEETS FOR STREET LIGHTING DETAILS.
- SEE D-SHEETS FOR DRAINAGE IMPROVEMENTS.

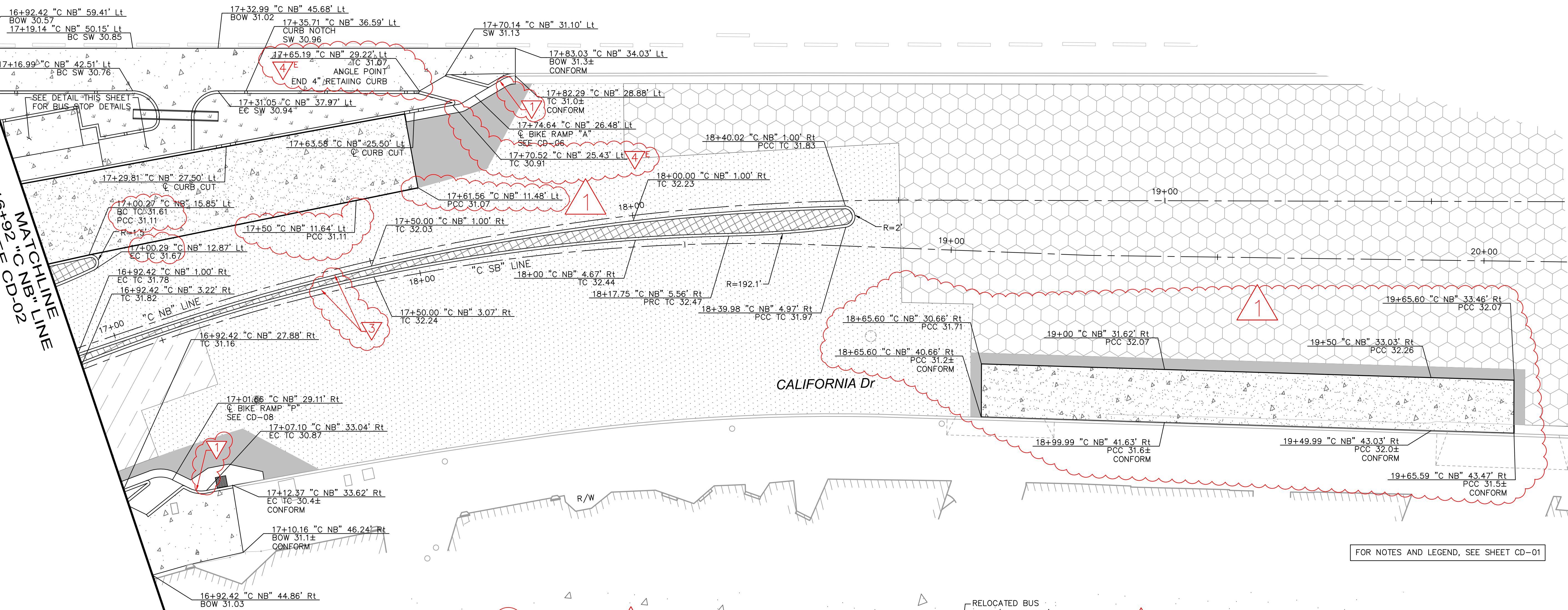


																																																																																																																																																																																																																																																																																																																																																																																																																																																																																																																																																																																																																																																																																																																																																																																																																																																																																																																																																																																																																																																																																																																																																																																																																																																																																																																																																																																																																					</
--	--	--	--	--	--	--	--	--	--	--	--	--	--	--	--	--	--	--	--	--	--	--	--	--	--	--	--	--	--	--	--	--	--	--	--	--	--	--	--	--	--	--	--	--	--	--	--	--	--	--	--	--	--	--	--	--	--	--	--	--	--	--	--	--	--	--	--	--	--	--	--	--	--	--	--	--	--	--	--	--	--	--	--	--	--	--	--	--	--	--	--	--	--	--	--	--	--	--	--	--	--	--	--	--	--	--	--	--	--	--	--	--	--	--	--	--	--	--	--	--	--	--	--	--	--	--	--	--	--	--	--	--	--	--	--	--	--	--	--	--	--	--	--	--	--	--	--	--	--	--	--	--	--	--	--	--	--	--	--	--	--	--	--	--	--	--	--	--	--	--	--	--	--	--	--	--	--	--	--	--	--	--	--	--	--	--	--	--	--	--	--	--	--	--	--	--	--	--	--	--	--	--	--	--	--	--	--	--	--	--	--	--	--	--	--	--	--	--	--	--	--	--	--	--	--	--	--	--	--	--	--	--	--	--	--	--	--	--	--	--	--	--	--	--	--	--	--	--	--	--	--	--	--	--	--	--	--	--	--	--	--	--	--	--	--	--	--	--	--	--	--	--	--	--	--	--	--	--	--	--	--	--	--	--	--	--	--	--	--	--	--	--	--	--	--	--	--	--	--	--	--	--	--	--	--	--	--	--	--	--	--	--	--	--	--	--	--	--	--	--	--	--	--	--	--	--	--	--	--	--	--	--	--	--	--	--	--	--	--	--	--	--	--	--	--	--	--	--	--	--	--	--	--	--	--	--	--	--	--	--	--	--	--	--	--	--	--	--	--	--	--	--	--	--	--	--	--	--	--	--	--	--	--	--	--	--	--	--	--	--	--	--	--	--	--	--	--	--	--	--	--	--	--	--	--	--	--	--	--	--	--	--	--	--	--	--	--	--	--	--	--	--	--	--	--	--	--	--	--	--	--	--	--	--	--	--	--	--	--	--	--	--	--	--	--	--	--	--	--	--	--	--	--	--	--	--	--	--	--	--	--	--	--	--	--	--	--	--	--	--	--	--	--	--	--	--	--	--	--	--	--	--	--	--	--	--	--	--	--	--	--	--	--	--	--	--	--	--	--	--	--	--	--	--	--	--	--	--	--	--	--	--	--	--	--	--	--	--	--	--	--	--	--	--	--	--	--	--	--	--	--	--	--	--	--	--	--	--	--	--	--	--	--	--	--	--	--	--	--	--	--	--	--	--	--	--	--	--	--	--	--	--	--	--	--	--	--	--	--	--	--	--	--	--	--	--	--	--	--	--	--	--	--	--	--	--	--	--	--	--	--	--	--	--	--	--	--	--	--	--	--	--	--	--	--	--	--	--	--	--	--	--	--	--	--	--	--	--	--	--	--	--	--	--	--	--	--	--	--	--	--	--	--	--	--	--	--	--	--	--	--	--	--	--	--	--	--	--	--	--	--	--	--	--	--	--	--	--	--	--	--	--	--	--	--	--	--	--	--	--	--	--	--	--	--	--	--	--	--	--	--	--	--	--	--	--	--	--	--	--	--	--	--	--	--	--	--	--	--	--	--	--	--	--	--	--	--	--	--	--	--	--	--	--	--	--	--	--	--	--	--	--	--	--	--	--	--	--	--	--	--	--	--	--	--	--	--	--	--	--	--	--	--	--	--	--	--	--	--	--	--	--	--	--	--	--	--	--	--	--	--	--	--	--	--	--	--	--	--	--	--	--	--	--	--	--	--	--	--	--	--	--	--	--	--	--	--	--	--	--	--	--	--	--	--	--	--	--	--	--	--	--	--	--	--	--	--	--	--	--	--	--	--	--	--	--	--	--	--	--	--	--	--	--	--	--	--	--	--	--	--	--	--	--	--	--	--	--	--	--	--	--	--	--	--	--	--	--	--	--	--	--	--	--	--	--	--	--	--	--	--	--	--	--	--	--	--	--	--	--	--	--	--	--	--	--	--	--	--	--	--	--	--	--	--	--	--	--	--	--	--	--	--	--	--	--	--	--	--	--	--	--	--	--	--	--	--	--	--	--	--	--	--	--	--	--	--	--	--	--	--	--	--	--	--	--	--	--	--	--	--	--	--	--	--	--	--	--	--	--	--	--	--	--	--	--	--	--	--	--	--	--	--	--	--	--	--	--	--	--	--	--	--	--	--	--	--	--	--	--	--	--	--	--	--	--	--	--	--	--	--	--	--	--	--	--	--	--	--	--	--	--	--	--	--	--	--	--	--	--	--	--	--	--	--	--	--	--	--	--	--	--	--	--	--	--	--	--	--	--	--	--	--	--	--	--	--	--	--	--	--	--	--	--	--	--	--	--	--	--	--	--	--	--	--	--	--	--	--	--	--	--	--	--	--	--	--	--	--	--	--	--	--	--	--	--	--	--	--	--	--	--	--	--	--	--	--	--	--	--	--	--	--	--	--	--	--	--	--	--	--	--	--	--	--	--	--	--	--	--	--	--	--	--	--	--	--	--	--	--	--	--	--	--	--	--	--	--	--	--	--	--	--	--	--	--	--	--	--	--	--	--	--	--	--	--	--	--	--	--	--	--	--	--	--	--	--	--	--	--	--	--	--	--	--	--	--	--	--	--	--	--	--	--	--	--	--	--	--	--	--	--	--	--	--	--	--	--	--	--	--	--	--	--	--	--	--	--	--	--	--	--	--	--	--	--	--	--	--	--	--	--	--	--	--	--	--	--	--	--	--	--	--	--	--	--	--	--	--	--	--	--	--	--	--	--	--	--	--	--	--	--	--	--	--	--	--	--	--	--	--	--	--	--	--	--	--	--	--	--	--	--	--	--	--	--	--	--	--	--	--	--	--	--	--	--	--	--	--	--	--	--	--	--	--	--	--	--	--	--	--	--	--	--	--	--	--	--	--	--	--	--	--	--	--	--	--	--	--	--	--	--	--	--	--	--	--	--	--	--	--	--	--	--	--	--	--	--	--	--	--	--	--	--	--	--	--	--	--	--	--	--	--	--	--	--	--	--	--	--	--	--	--	--	--	--	--	--	--	--	--	--	--	--	--	--	--	--	--	--	--	--	--	--	----

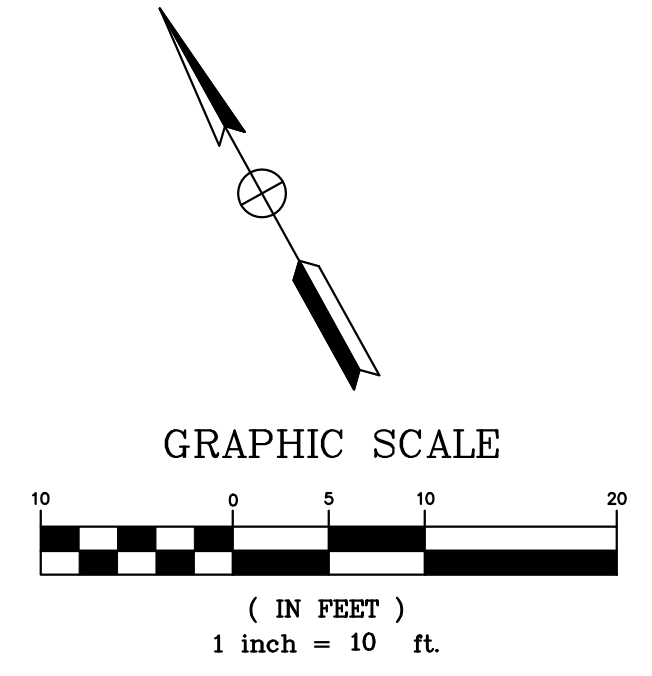
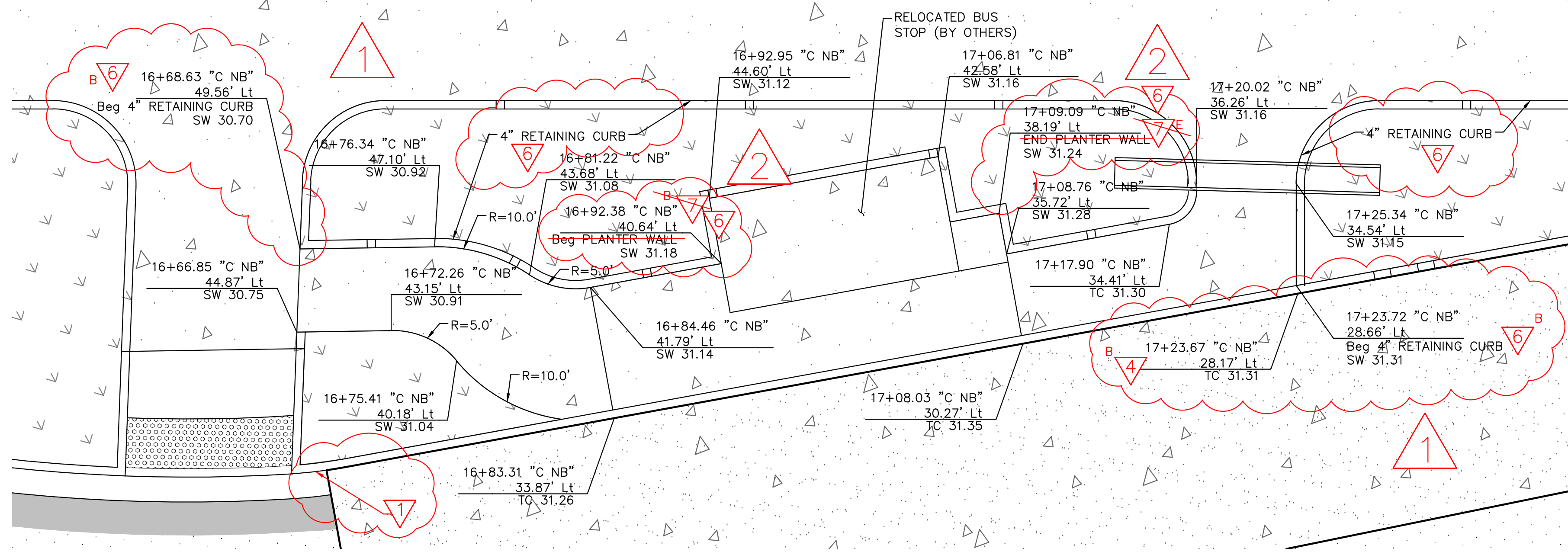
This document, together with the concepts and designs presented herein, is intended only for the specific purpose and client for which it was prepared. Reuse of and improper reliance on this document without written authorization and adaptation by Kimley-Horn and Associates, Inc. shall be without liability to Kimley-Horn and Associates, Inc.



MATCHLINE
16+92.00 SEE CD-02



FOR NOTES AND LEGEND, SEE SHEET CD-01



BUS STOP GRADING DETAIL
SCALE: 1"=5'

No.	REVISIONS	DATE	BY
ADDENDUM No. 3		2/12/18	DCC
ADDENDUM No. 1		1/31/18	DCC

Kimley»Horn
© 2015 KIMLEY-HORN AND ASSOCIATES, INC.
4637 CHABOT DRIVE, SUITE 300, PLEASANTON, CA 94588
PHONE: 925-398-4840
WWW.KIMLEY-HORN.COM

KHA PROJECT	097515003
DATE	12/27/2017
SCALE	AS SHOWN
DESIGNED BY	DW
DRAWN BY	DW
CHECKED BY	DC

**CALIFORNIA DRIVE
ROUNDBABOUT**
PREPARED FOR
CITY OF BURLINGAME

SAN MATEO COUNTY
CA



CONSTRUCTION DETAILS

SHEET NO. 13
OF 61 SHEETS

CD-03

																																																																																																																																																																																																																																																																																																																																																																																																																																																																																																																																																																																																																																																																																																																																																																																																																																																																																																																																																																																																																																																																																																																																																																																																																																																																																																																																																																																																																					</
--	--	--	--	--	--	--	--	--	--	--	--	--	--	--	--	--	--	--	--	--	--	--	--	--	--	--	--	--	--	--	--	--	--	--	--	--	--	--	--	--	--	--	--	--	--	--	--	--	--	--	--	--	--	--	--	--	--	--	--	--	--	--	--	--	--	--	--	--	--	--	--	--	--	--	--	--	--	--	--	--	--	--	--	--	--	--	--	--	--	--	--	--	--	--	--	--	--	--	--	--	--	--	--	--	--	--	--	--	--	--	--	--	--	--	--	--	--	--	--	--	--	--	--	--	--	--	--	--	--	--	--	--	--	--	--	--	--	--	--	--	--	--	--	--	--	--	--	--	--	--	--	--	--	--	--	--	--	--	--	--	--	--	--	--	--	--	--	--	--	--	--	--	--	--	--	--	--	--	--	--	--	--	--	--	--	--	--	--	--	--	--	--	--	--	--	--	--	--	--	--	--	--	--	--	--	--	--	--	--	--	--	--	--	--	--	--	--	--	--	--	--	--	--	--	--	--	--	--	--	--	--	--	--	--	--	--	--	--	--	--	--	--	--	--	--	--	--	--	--	--	--	--	--	--	--	--	--	--	--	--	--	--	--	--	--	--	--	--	--	--	--	--	--	--	--	--	--	--	--	--	--	--	--	--	--	--	--	--	--	--	--	--	--	--	--	--	--	--	--	--	--	--	--	--	--	--	--	--	--	--	--	--	--	--	--	--	--	--	--	--	--	--	--	--	--	--	--	--	--	--	--	--	--	--	--	--	--	--	--	--	--	--	--	--	--	--	--	--	--	--	--	--	--	--	--	--	--	--	--	--	--	--	--	--	--	--	--	--	--	--	--	--	--	--	--	--	--	--	--	--	--	--	--	--	--	--	--	--	--	--	--	--	--	--	--	--	--	--	--	--	--	--	--	--	--	--	--	--	--	--	--	--	--	--	--	--	--	--	--	--	--	--	--	--	--	--	--	--	--	--	--	--	--	--	--	--	--	--	--	--	--	--	--	--	--	--	--	--	--	--	--	--	--	--	--	--	--	--	--	--	--	--	--	--	--	--	--	--	--	--	--	--	--	--	--	--	--	--	--	--	--	--	--	--	--	--	--	--	--	--	--	--	--	--	--	--	--	--	--	--	--	--	--	--	--	--	--	--	--	--	--	--	--	--	--	--	--	--	--	--	--	--	--	--	--	--	--	--	--	--	--	--	--	--	--	--	--	--	--	--	--	--	--	--	--	--	--	--	--	--	--	--	--	--	--	--	--	--	--	--	--	--	--	--	--	--	--	--	--	--	--	--	--	--	--	--	--	--	--	--	--	--	--	--	--	--	--	--	--	--	--	--	--	--	--	--	--	--	--	--	--	--	--	--	--	--	--	--	--	--	--	--	--	--	--	--	--	--	--	--	--	--	--	--	--	--	--	--	--	--	--	--	--	--	--	--	--	--	--	--	--	--	--	--	--	--	--	--	--	--	--	--	--	--	--	--	--	--	--	--	--	--	--	--	--	--	--	--	--	--	--	--	--	--	--	--	--	--	--	--	--	--	--	--	--	--	--	--	--	--	--	--	--	--	--	--	--	--	--	--	--	--	--	--	--	--	--	--	--	--	--	--	--	--	--	--	--	--	--	--	--	--	--	--	--	--	--	--	--	--	--	--	--	--	--	--	--	--	--	--	--	--	--	--	--	--	--	--	--	--	--	--	--	--	--	--	--	--	--	--	--	--	--	--	--	--	--	--	--	--	--	--	--	--	--	--	--	--	--	--	--	--	--	--	--	--	--	--	--	--	--	--	--	--	--	--	--	--	--	--	--	--	--	--	--	--	--	--	--	--	--	--	--	--	--	--	--	--	--	--	--	--	--	--	--	--	--	--	--	--	--	--	--	--	--	--	--	--	--	--	--	--	--	--	--	--	--	--	--	--	--	--	--	--	--	--	--	--	--	--	--	--	--	--	--	--	--	--	--	--	--	--	--	--	--	--	--	--	--	--	--	--	--	--	--	--	--	--	--	--	--	--	--	--	--	--	--	--	--	--	--	--	--	--	--	--	--	--	--	--	--	--	--	--	--	--	--	--	--	--	--	--	--	--	--	--	--	--	--	--	--	--	--	--	--	--	--	--	--	--	--	--	--	--	--	--	--	--	--	--	--	--	--	--	--	--	--	--	--	--	--	--	--	--	--	--	--	--	--	--	--	--	--	--	--	--	--	--	--	--	--	--	--	--	--	--	--	--	--	--	--	--	--	--	--	--	--	--	--	--	--	--	--	--	--	--	--	--	--	--	--	--	--	--	--	--	--	--	--	--	--	--	--	--	--	--	--	--	--	--	--	--	--	--	--	--	--	--	--	--	--	--	--	--	--	--	--	--	--	--	--	--	--	--	--	--	--	--	--	--	--	--	--	--	--	--	--	--	--	--	--	--	--	--	--	--	--	--	--	--	--	--	--	--	--	--	--	--	--	--	--	--	--	--	--	--	--	--	--	--	--	--	--	--	--	--	--	--	--	--	--	--	--	--	--	--	--	--	--	--	--	--	--	--	--	--	--	--	--	--	--	--	--	--	--	--	--	--	--	--	--	--	--	--	--	--	--	--	--	--	--	--	--	--	--	--	--	--	--	--	--	--	--	--	--	--	--	--	--	--	--	--	--	--	--	--	--	--	--	--	--	--	--	--	--	--	--	--	--	--	--	--	--	--	--	--	--	--	--	--	--	--	--	--	--	--	--	--	--	--	--	--	--	--	--	--	--	--	--	--	--	--	--	--	--	--	--	--	--	--	--	--	--	--	--	--	--	--	--	--	--	--	--	--	--	--	--	--	--	--	--	--	--	--	--	--	--	--	--	--	--	--	--	--	--	--	--	--	--	--	--	--	--	--	--	--	--	--	--	--	--	--	--	--	--	--	--	--	--	--	--	--	--	--	--	--	--	--	--	--	--	--	--	--	--	--	--	--	--	--	--	--	--	--	--	--	--	--	--	--	--	--	--	--	--	--	--	--	--	--	--	--	--	--	--	--	--	--	--	--	--	--	--	--	--	--	--	--	--	--	--	--	--	--	--	--	--	--	--	--	--	--	--	--	----

This document, together with the concepts and designs presented herein, is intended only for the specific purpose and client for which it was prepared. Reuse of and improper reliance on this document without written authorization and adaptation by Kimley-Horn and Associates, Inc. shall be without liability to Kimley-Horn and Associates, Inc.

CONSTRUCTION NOTES

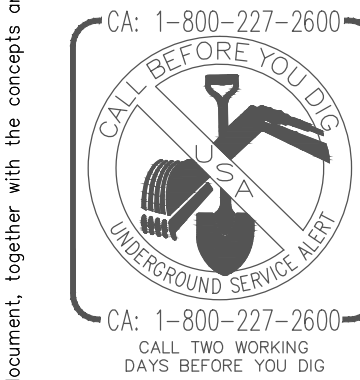
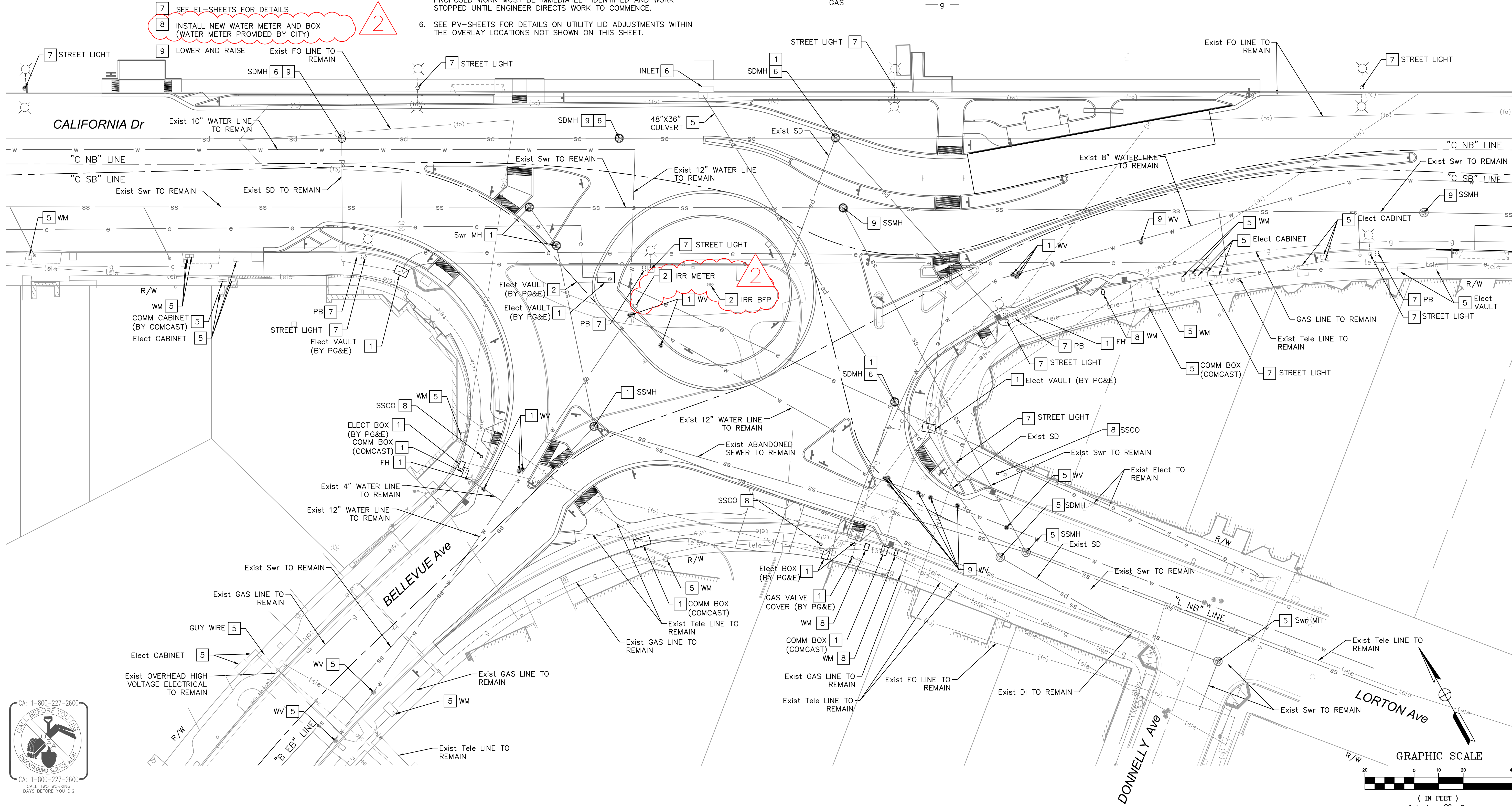
- 1 ADJUST TO GRADE
- 2 REMOVE UTILITY FACILITY
- 3 INSTALL UTILITY FACILITY
- 4 RELOCATE UTILITY FACILITY
- 5 TO REMAIN
- 6 SEE D-SHEETS FOR DETAILS
- 7 SEE EL-SHEETS FOR DETAILS
- 8 INSTALL NEW WATER METER AND BOX (WATER METER PROVIDED BY CITY)
- 9 LOWER AND RAISE

NOTES

- 1. ALL UTILITIES TO REMAIN UNLESS OTHERWISE NOTED.
- 2. ALL UTILITIES SHOWN ARE EXISTING UNLESS OTHERWISE NOTED.
- 3. SEE D-SHEETS FOR DRAINAGE DETAILS.
- 4. SEE EL-SHEETS FOR LIGHTING AND ELECTRICAL DETAILS.
- 5. LOCATIONS OF EXISTING UTILITIES MUST BE VERIFIED BY THE CONTRACTOR PRIOR TO CONSTRUCTION. ANY CONFLICTS WITH THE PROPOSED WORK MUST BE IMMEDIATELY IDENTIFIED AND WORK STOPPED UNTIL ENGINEER DIRECTS WORK TO COMMENCE.
- 6. SEE PV-SHEETS FOR DETAILS ON UTILITY LID ADJUSTMENTS WITHIN THE OVERLAY LOCATIONS NOT SHOWN ON THIS SHEET.

LEGEND AND ABBREVIATIONS

	EXISTING	PROPOSED
DI	DRAINAGE INLET	
FO	FIBER OPTIC	— (fo) —
TELE	TELEPHONE/COMM	— tele —
SD	STORM DRAIN	— sd —
Swr	SEWER	— ss —
	GAS	— g —



No.	REVISIONS	DATE	BY
1	ADDENDUM No. 3	2/12/18	DCC

© 2015 KIMLEY-HORN AND ASSOCIATES, INC.
4637 CHABOT DRIVE, SUITE 300, PLEASANTON, CA 94588
PHONE: 925-398-4840
WWW.KIMLEY-HORN.COM

KHA PROJECT
097515003
DATE
12/27/2017
SCALE AS SHOWN
DESIGNED BY DW
DRAWN BY DW
CHECKED BY DC

CALIFORNIA DRIVE
ROUNDBABOUT
PREPARED FOR
CITY OF BURLINGAME
SAN MATEO COUNTY
CA

UTILITY PLAN

SHEET NO. 26
OF 61 SHEETS
U-01