

# Broadway Burlingame Grade Separation Project Update

Burlingame City Council

February 7, 2022

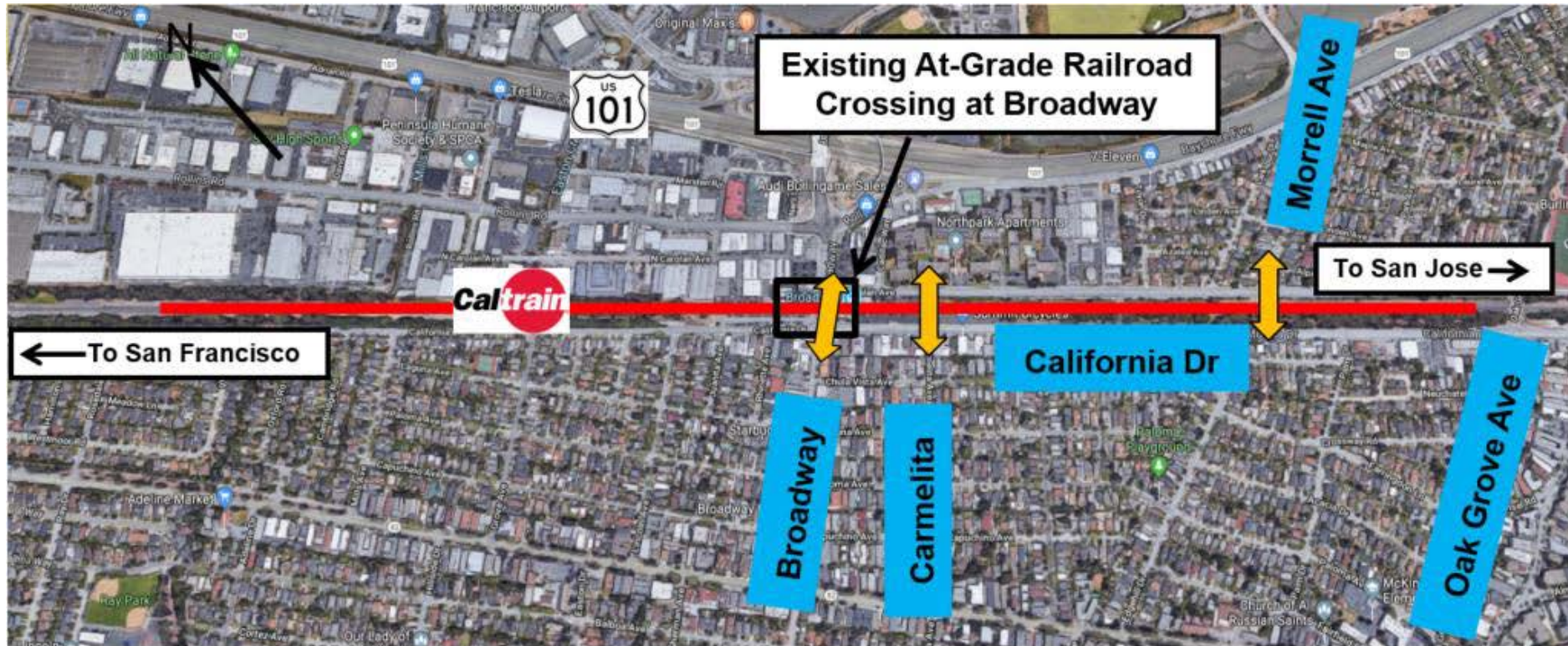


# Overview

- Project Location / Existing Conditions
- Project Goals / Scope
- Status Update
- Environmental Clearance / Permits
- Project Enhancements
- Project Cost & Schedule Update
- Project Delivery Method
- Grants
- Questions

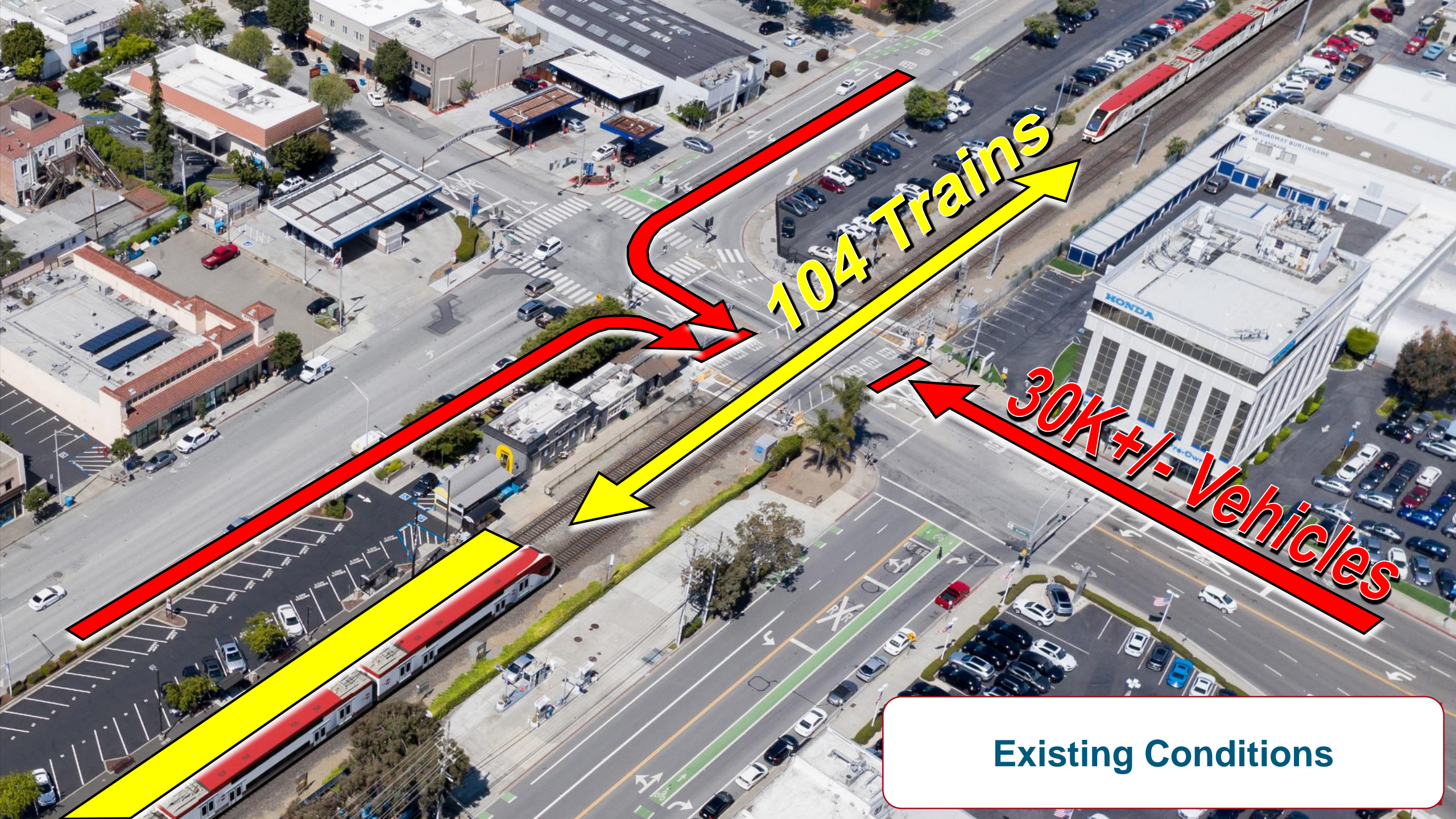


# Project Location



- Ped / Bike Access
- Broadway & Morrell Ave. to be grade-separated
- New grade separated access at Carmelita Ave.





104 Trains

30K+/- Vehicles

Existing Conditions



# Project Goals

***Eliminate*** train-vehicle collisions

***Enhance***

- Pedestrian, bicyclist & motorist **safety**
- East-west connectivity

***Reduce***

- Delays
- Automobile congestion & emissions

***Improve***

- Customer experience with new station
- Efficiency of rail operations

# Project Scope

- Grade separate the railroad and Broadway
- Build new station with center boarding platform, ramp & stair access
- Station parking on east side of tracks with access to/from Carolan Ave.
- Two temporary shoofly tracks east of the existing mainline (for train operation during construction phase)
- Ped/Bike crossings at Broadway, Carmelita & Morrell

Phase/Milestone	Completed
Project Study Report	Jan 2017
Prelim. Eng'g/Environ. Clearance	Oct 2020
RFP to complete Final Design	Sep 2020
Contract award to Mark Thomas & Co. for future phases of project	Nov 2020
Final Design phase kick-off <ul style="list-style-type: none"> <li>evaluated value-added modifications (VE Study)</li> <li>base-mapping</li> <li>utility mapping verification</li> <li>geotechnical exploration</li> <li>bus/bike &amp; pedestrian coordination</li> <li>hydraulic modeling</li> </ul>	Jan 2021
VE Options resolved	Jan 2022

# Status Update

- The Project is Moving Forward
- Key Concerns Addressed

# Environmental Clearance

Task	
<b>CEQA Statutorily Exempt</b> (safety project to eliminate at-grade crossing)	Filed Apr 2020
<b>NEPA Clearance</b> (Documented Categorical Exclusion)- Federal Transit Administration	Completed Oct 2020



# Environmental Permits

## To be prepared at 65% Design:

- Section 404 Nationwide Permit #14 (Linear Facilities) - USACOE
- Section 401(c) Water Quality Certification - RWQB
- Streambed Alteration Agreement - CDFW
- Estimated Permitting Phase Duration: Obtain permits 6 months after completion of 65% design

# Project Enhancements

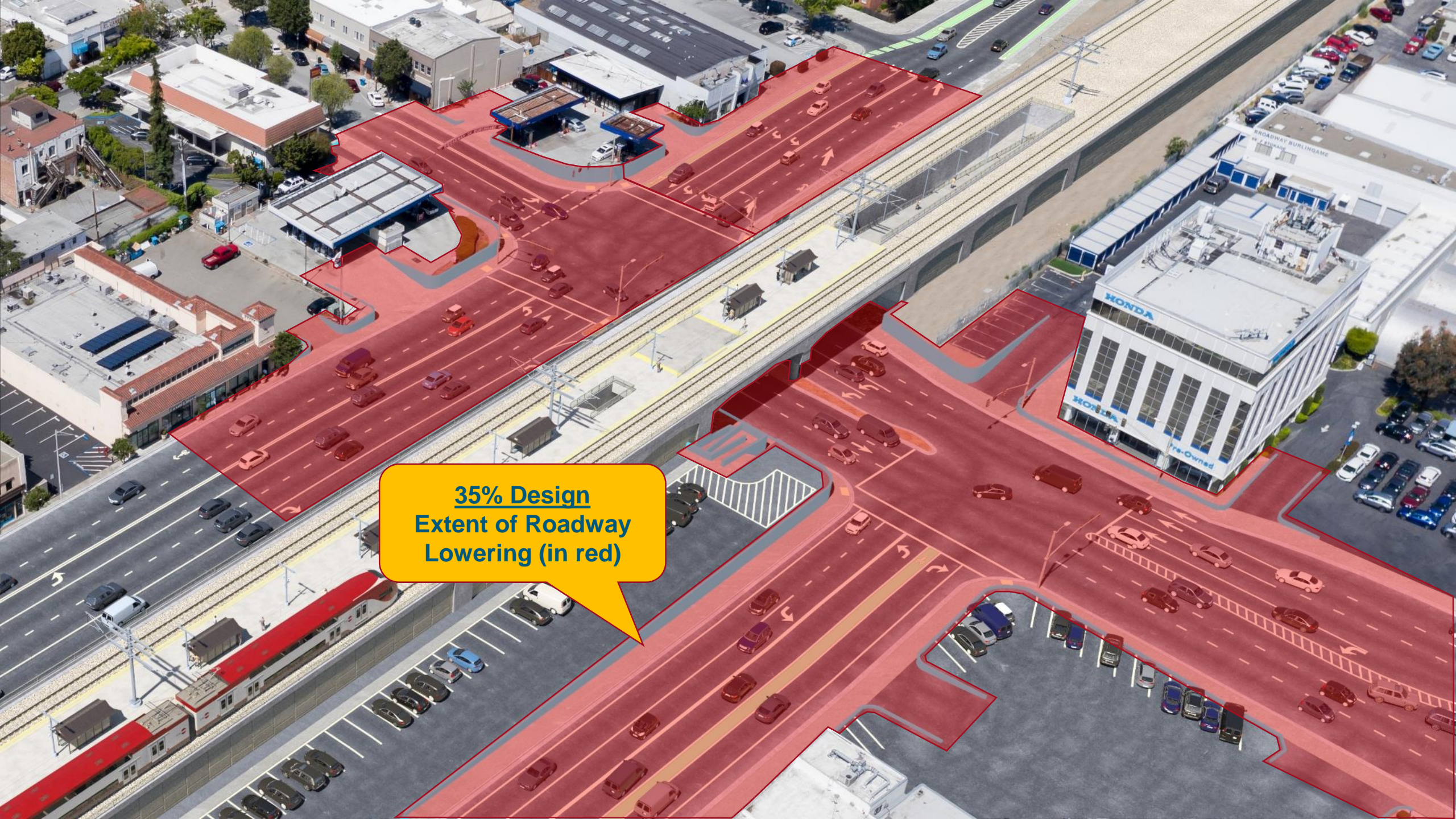
Through Value Engineering (VE)

## ***Reduce:***

- Traffic Impacts
- Right of Way Acquisition
- Utility Risks
- Construction Duration and Costs

***Improve*** Station Connectivity





35% Design  
Extent of Roadway  
Lowering (in red)



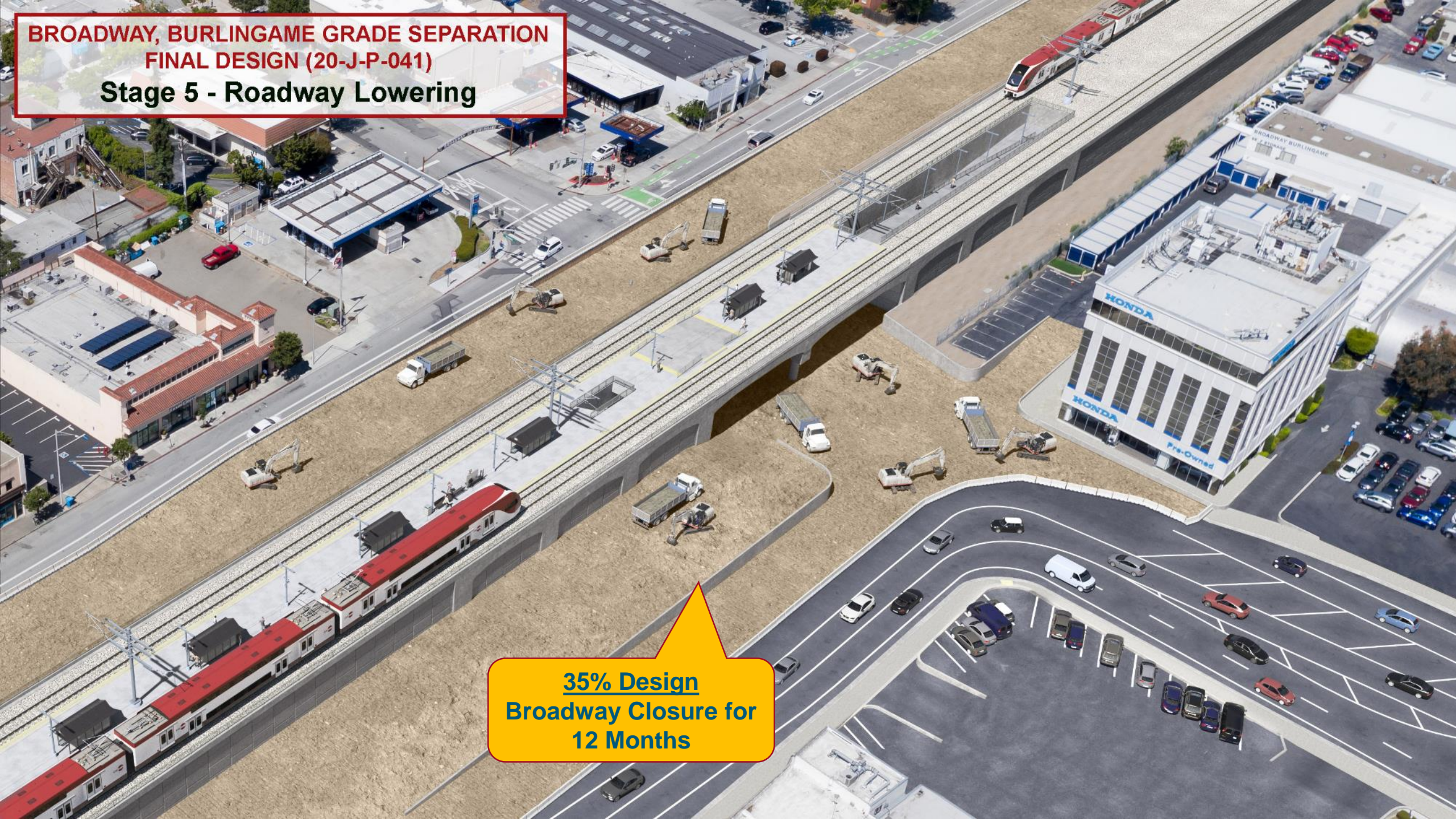




**BROADWAY, BURLINGAME GRADE SEPARATION  
FINAL DESIGN (20-J-P-041)**

**Stage 5 - Roadway Lowering**

**35% Design  
Broadway Closure for  
12 Months**

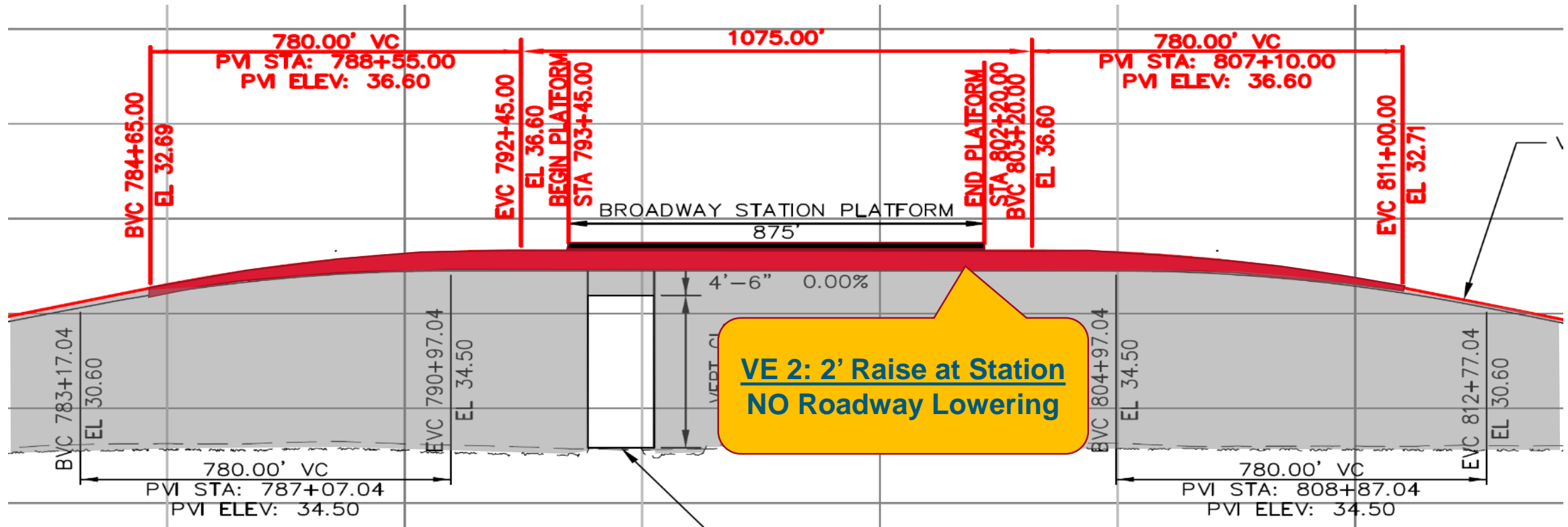






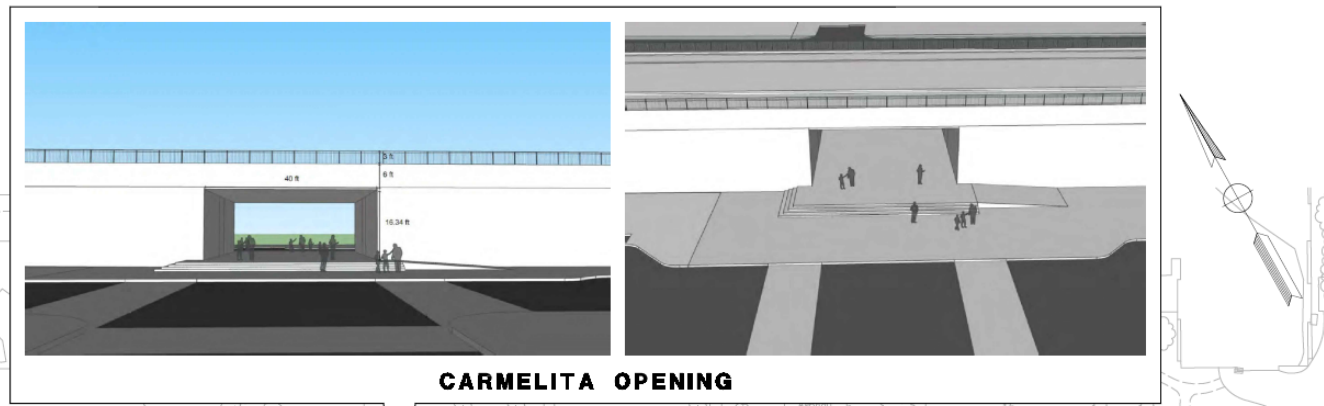
**VE 1 Shallower Structure =**  
**Reduced Roadway**  
**Lowering (in red)**



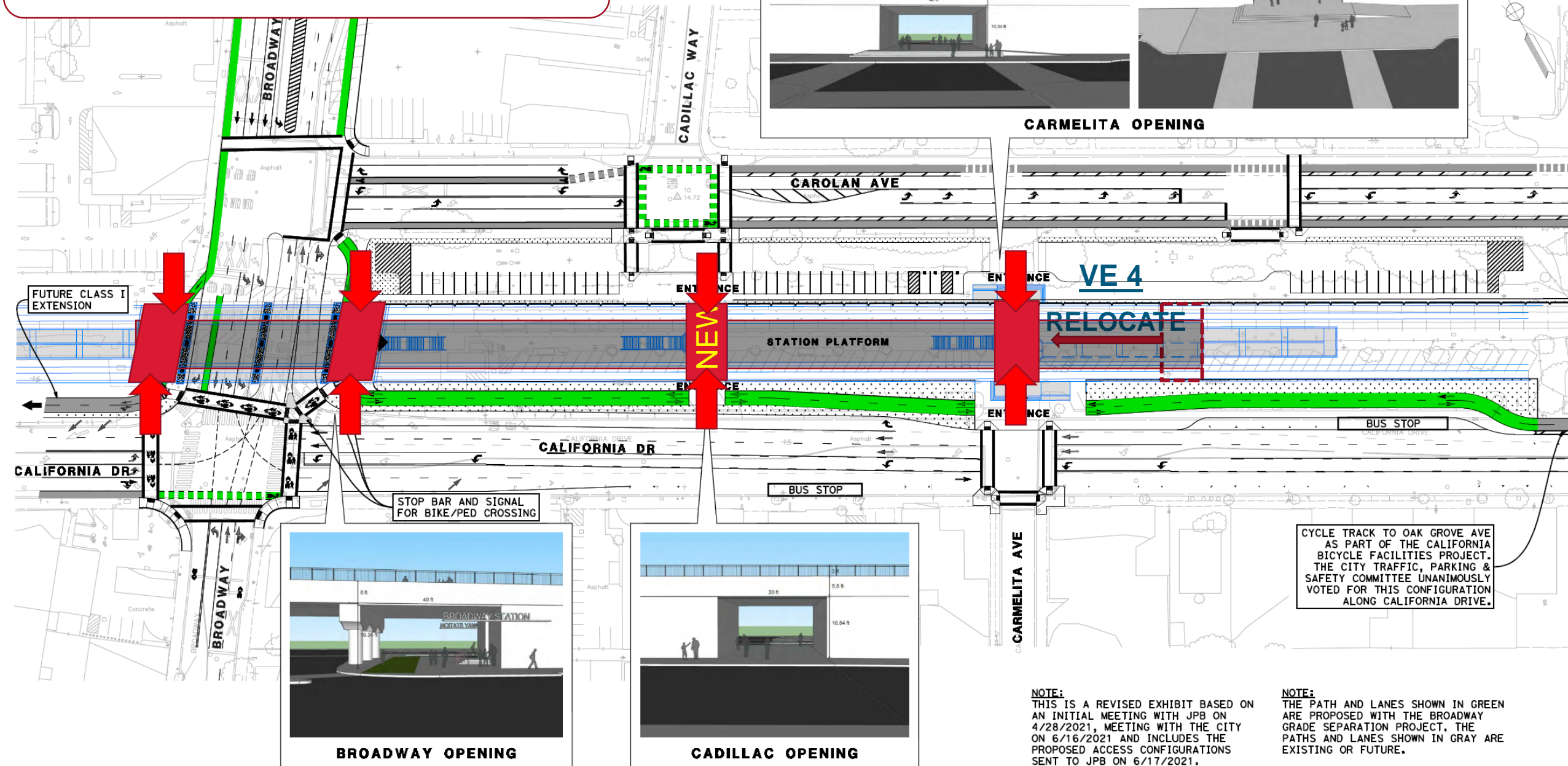


# Improved Connectivity

THE CARMELITITA REQUIRED TO MEET WITH A LEVEL STATION WITH A STATION RAISE AND 2' TO ELIMINATE THE CURB RING.



CARMELITITA OPENING



FUTURE CLASS I EXTENSION

NEW

VE 4

RELOCATE

STATION PLATFORM

BUS STOP

STOP BAR AND SIGNAL FOR BIKE/PED CROSSING

CALIFORNIA DR

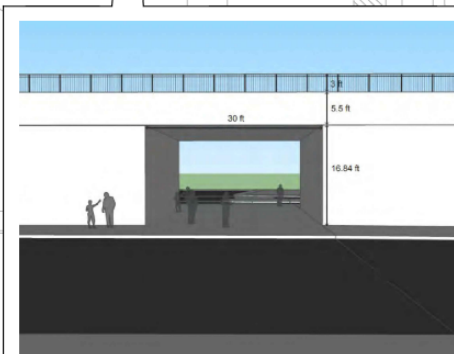
BUS STOP

CARMELITITA AVE

CYCLE TRACK TO OAK GROVE AVE AS PART OF THE CALIFORNIA BICYCLE FACILITIES PROJECT. THE CITY TRAFFIC, PARKING & SAFETY COMMITTEE UNANIMOUSLY VOTED FOR THIS CONFIGURATION ALONG CALIFORNIA DRIVE.



BROADWAY OPENING



CADILLAC OPENING

NOTE:  
THIS IS A REVISED EXHIBIT BASED ON AN INITIAL MEETING WITH JPB ON 4/28/2021, MEETING WITH THE CITY ON 6/16/2021 AND INCLUDES THE PROPOSED ACCESS CONFIGURATIONS SENT TO JPB ON 6/17/2021.

NOTE:  
THE PATH AND LANES SHOWN IN GREEN ARE PROPOSED WITH THE BROADWAY GRADE SEPARATION PROJECT. THE PATHS AND LANES SHOWN IN GRAY ARE EXISTING OR FUTURE.

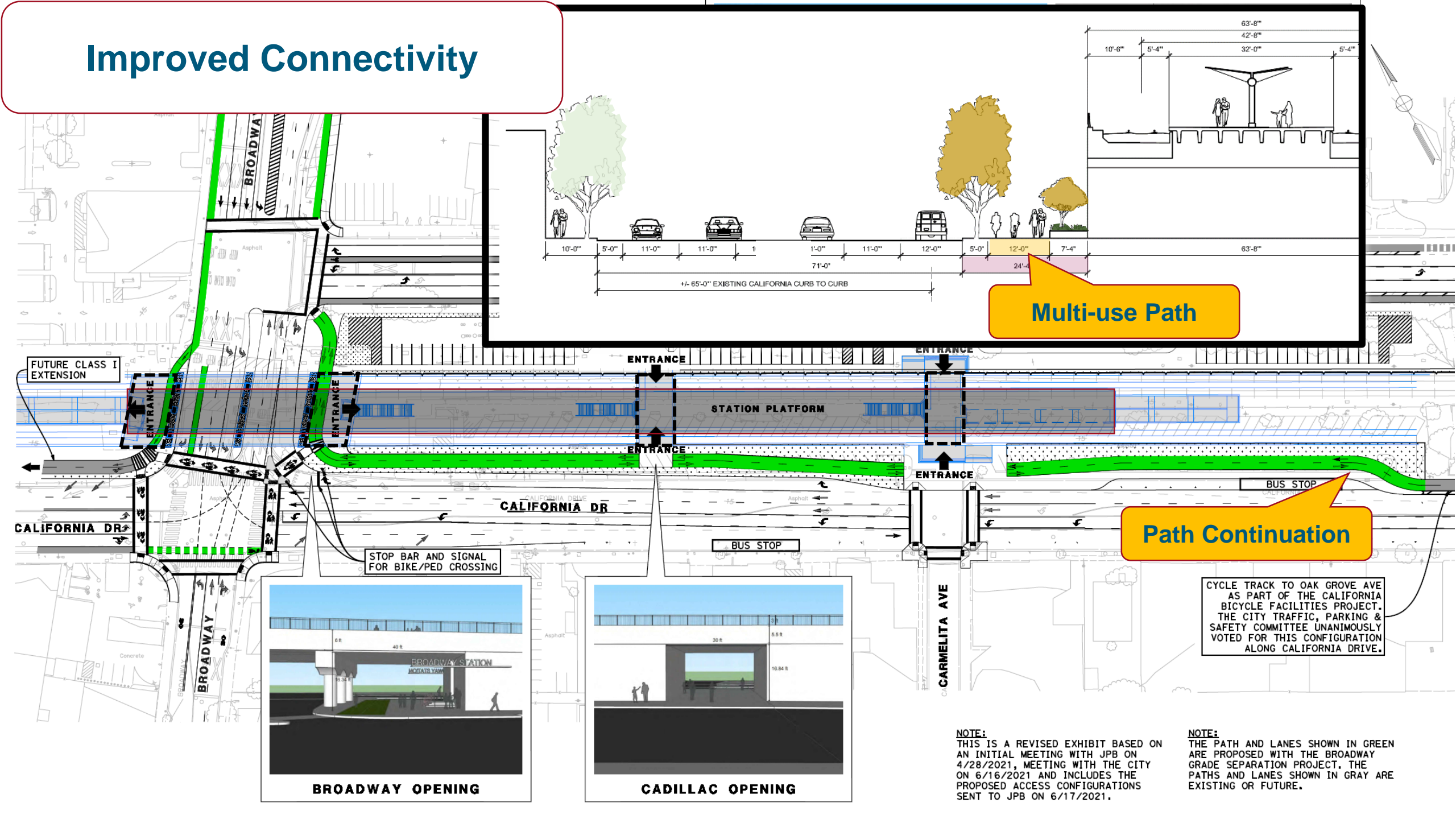


# Improved Connectivity





# Improved Connectivity





# Improved Connectivity





Majilla/Toyon Ped Crossing



Parking Lot (East of Station)



Ped Station Entrance (West)

Overall Look & Feel



Parking Lot (East of Station)

*NOTE: Renderings are schematic only. Project aesthetic (color, finishes, and furniture) will be defined during final design.*



# Project Cost Update (1000's)

Phase	TA Funds \$	Local Match \$	Estimate \$
Project Study & Preliminary Engineering	5,050	500	5,550
Final Design / Environmental Permits	17,805	1,500	19,305
Right of Way / Utilities *	-	-	23,522
Construction *	-	-	230,427
VE 1: Shallower bridge structure	-	-	(23,267)
VE 2: Raise rail profile 2 feet	-	-	(3,324)
VE 4: Carmelita Ave. entrance	-	-	0
VE 5: Morrell undercrossing	-	-	0
<b>Subtotal</b>			<b>252,213</b>
YOE Mid Construction 2026**			64,189
<b>TOTAL</b>			<b>316,402</b>

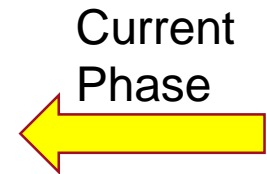
\* Future Allocations

\*\* Escalation for inflation



# Project Schedule Update

Phase	Start	Finish
Project Study Report	Jan 2014	Jan 2017
Preliminary Engineering / Environmental Clearance	Mar 2017	Oct 2020
Final Design / Environmental Permits	Jan 2021	Jul 2024
Right of Way / Utilities	Jul 2023	Sep 2024
Construction	Jan 2025	May 2028





# Project Delivery Method

Exploring  
***Construction Manager / General Contractor (CM/GC)***

## Legal Framework

- **Allowed** pursuant to California Public Contract Code **103394** et seq.
- Used by Caltrans and others in California

## Goals

- Safely deliver high quality infrastructure
- Effective scope, schedule, budget Management
  - Early Contractor involvement & Early works – utility relocations
  - Constructability reviews and incorporation of lessons learned
  - Improved cost and schedule certainty
- Minimize impacts to community and Caltrain Operations
- Provide meaningful opportunity for diversity contracting





# Grants

- City-led effort
- Caltrain can provide support
- Upcoming Opportunities:
  - Rebuilding American Infrastructure with Sustainability and Equity (RAISE) – Notice of Funding Opportunity (NOFO) coming soon
  - INFRA/Mega Projects/Rural Roads – USDOT to issue NOFO in February 2022

# Questions



FOR MORE INFORMATION

[WWW.CALTRAIN.COM](http://WWW.CALTRAIN.COM)

