

US 101/Broadway Interchange Project

General Information

October 2014



A vertical strip on the left side of the slide shows a blurred image of a multi-lane highway with several cars in motion, suggesting a focus on transportation infrastructure.

Construction Capital Programming

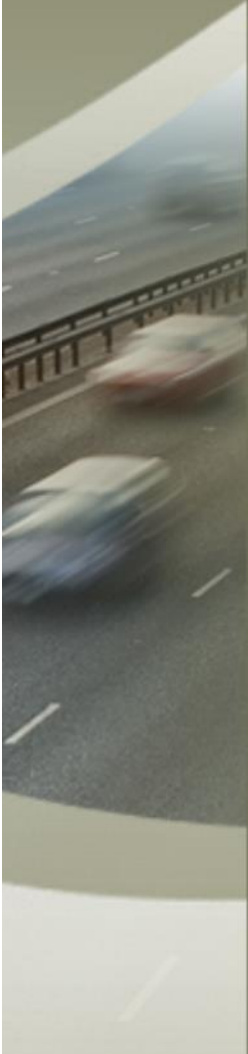
- \$32M from San Mateo County Transportation Authority (SMCTA) ½ cent sales tax
- \$11M State Transportation Improvement Program (STIP) as sponsored by C/CAG
- \$3.6M of Federal Funds from One Bay Area Grant (OBAG) Federal program
- \$5M from the City of Burlingame

Total Programmed Construction Capital \$51.6M

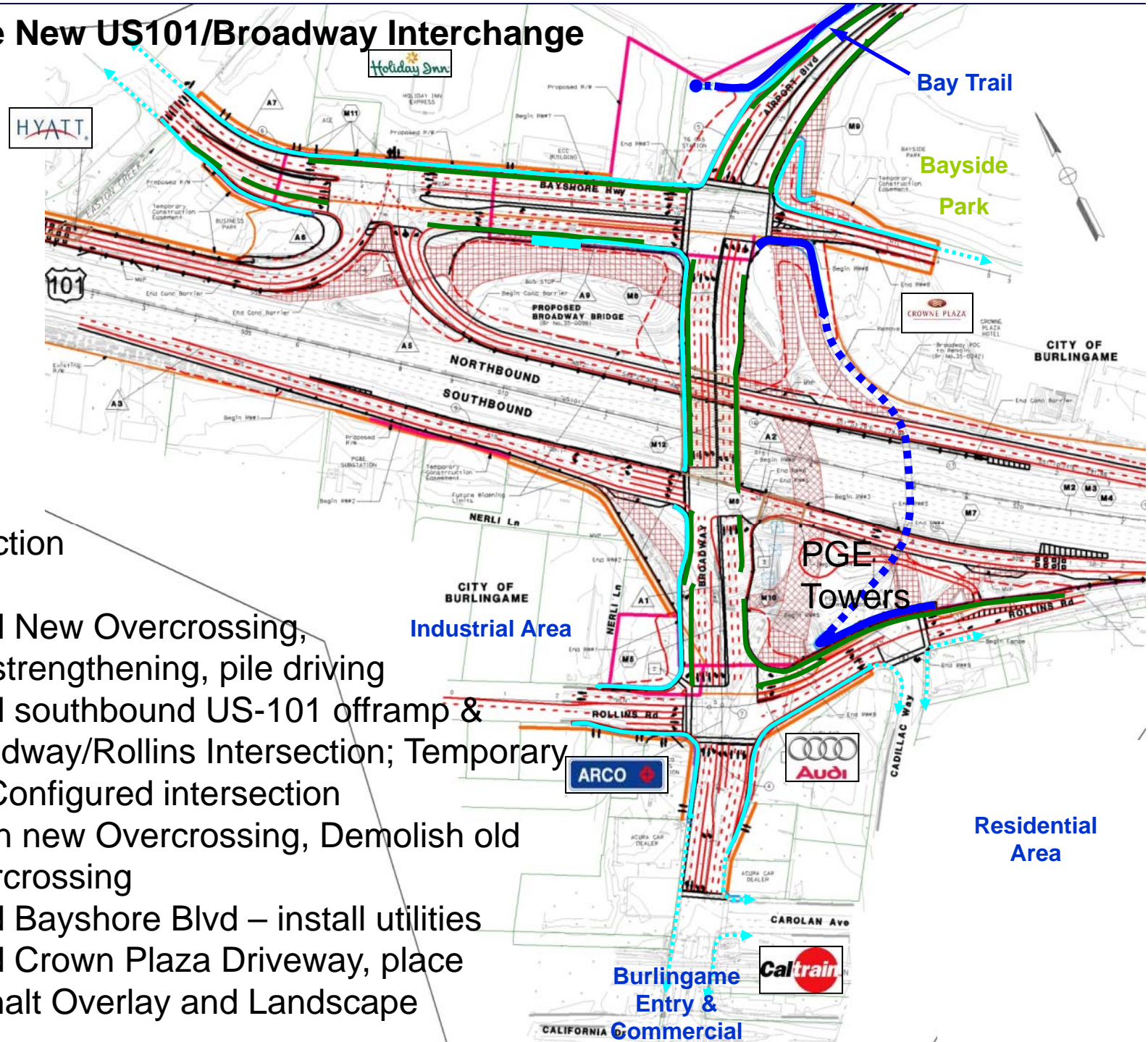
Recently Completed Milestones

- Bid Opening occurred May 13th, 2014
- Executed Contract with Ghilotti Construction on July 17, 2014
- First Working Day of Contract is Sept. 10, 2014
- Ground Breaking Ceremony on September 16, 2014
 - Held at Bay Trail adjacent to intersection at Bayshore & Airport Blvd.

Construction to be completed by mid-2017



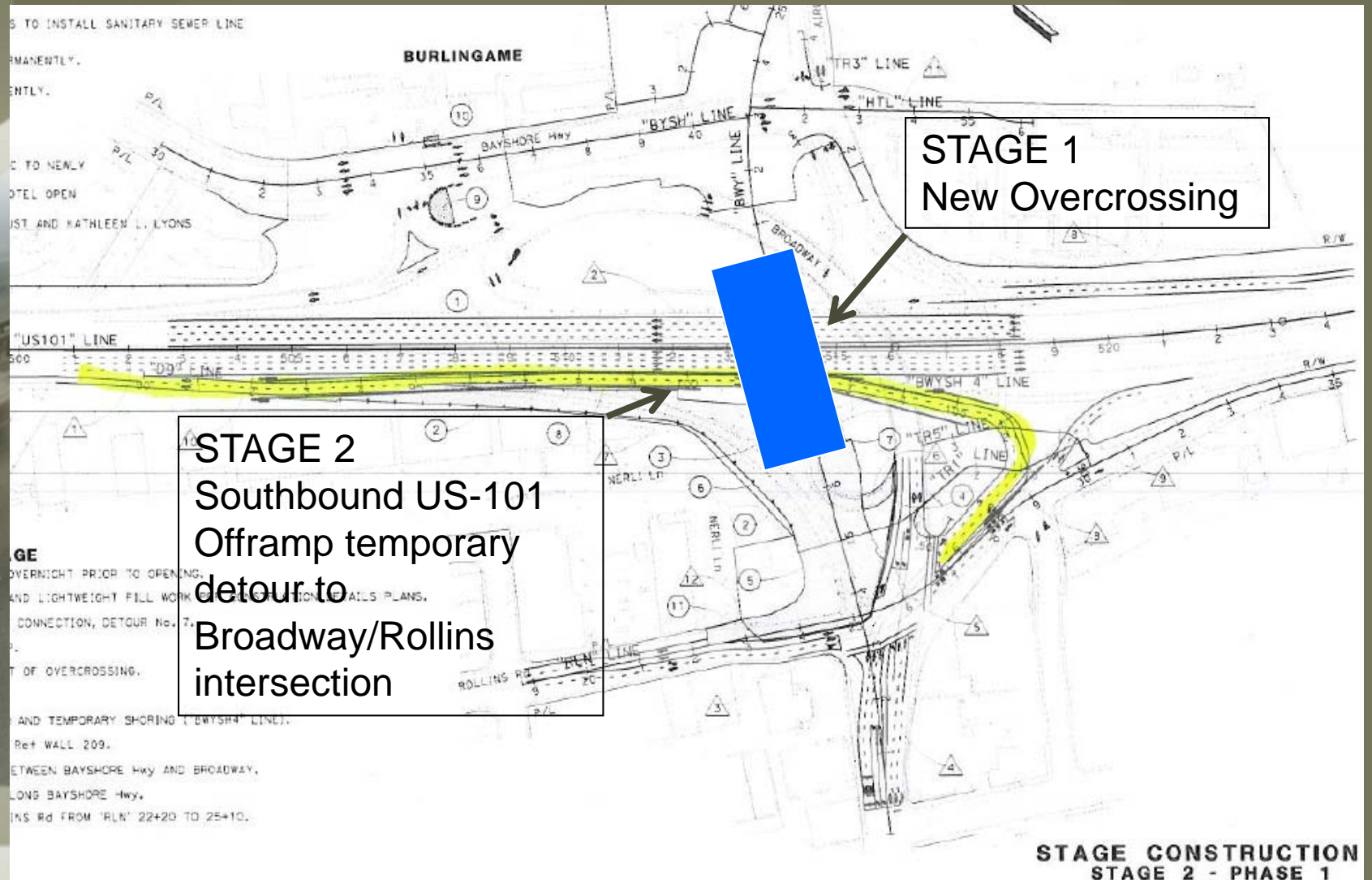
Building the New US101/Broadway Interchange



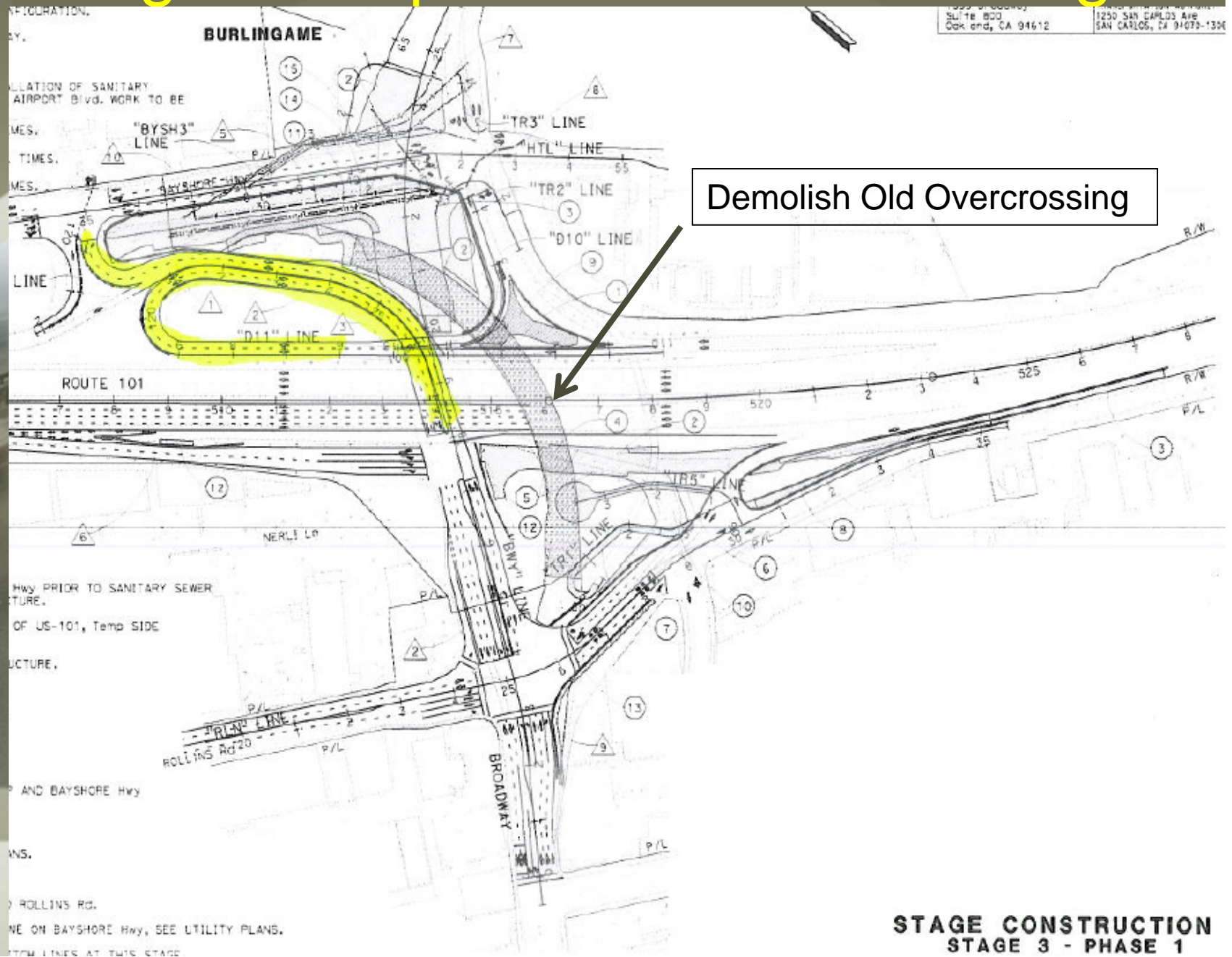
Stage Construction

- Stage 1 – Build New Overcrossing, soil strengthening, pile driving
- Stage 2 – Build southbound US-101 offramp & Broadway/Rollins Intersection; Temporary Re-Configured intersection
- Stage 3 – Open new Overcrossing, Demolish old Overcrossing
- Stage 4 – Build Bayshore Blvd – install utilities
- Stage 5 – Build Crown Plaza Driveway, place Asphalt Overlay and Landscape

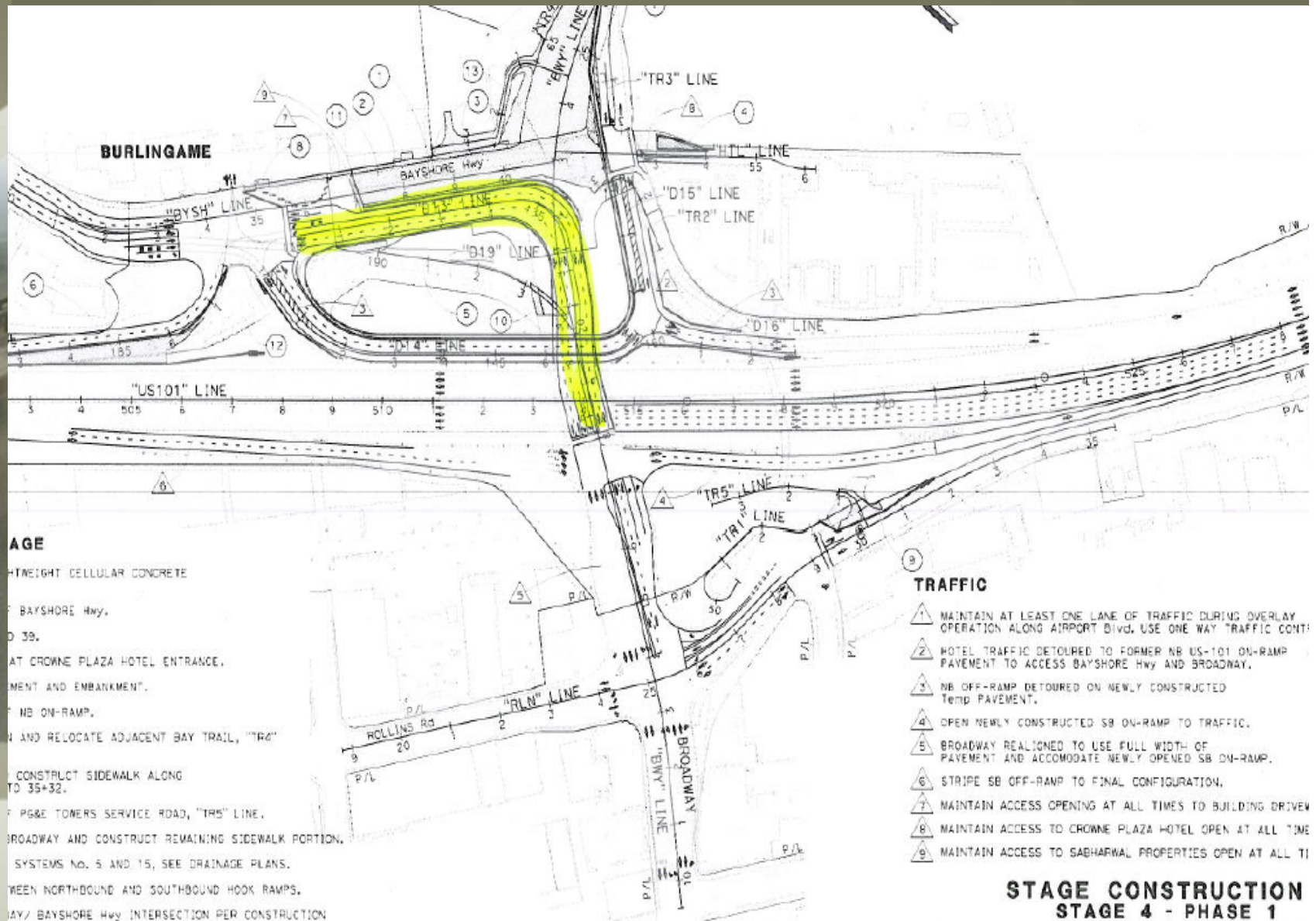
Stage 1 & 2 – Broadway/Rollins Intersection Construction



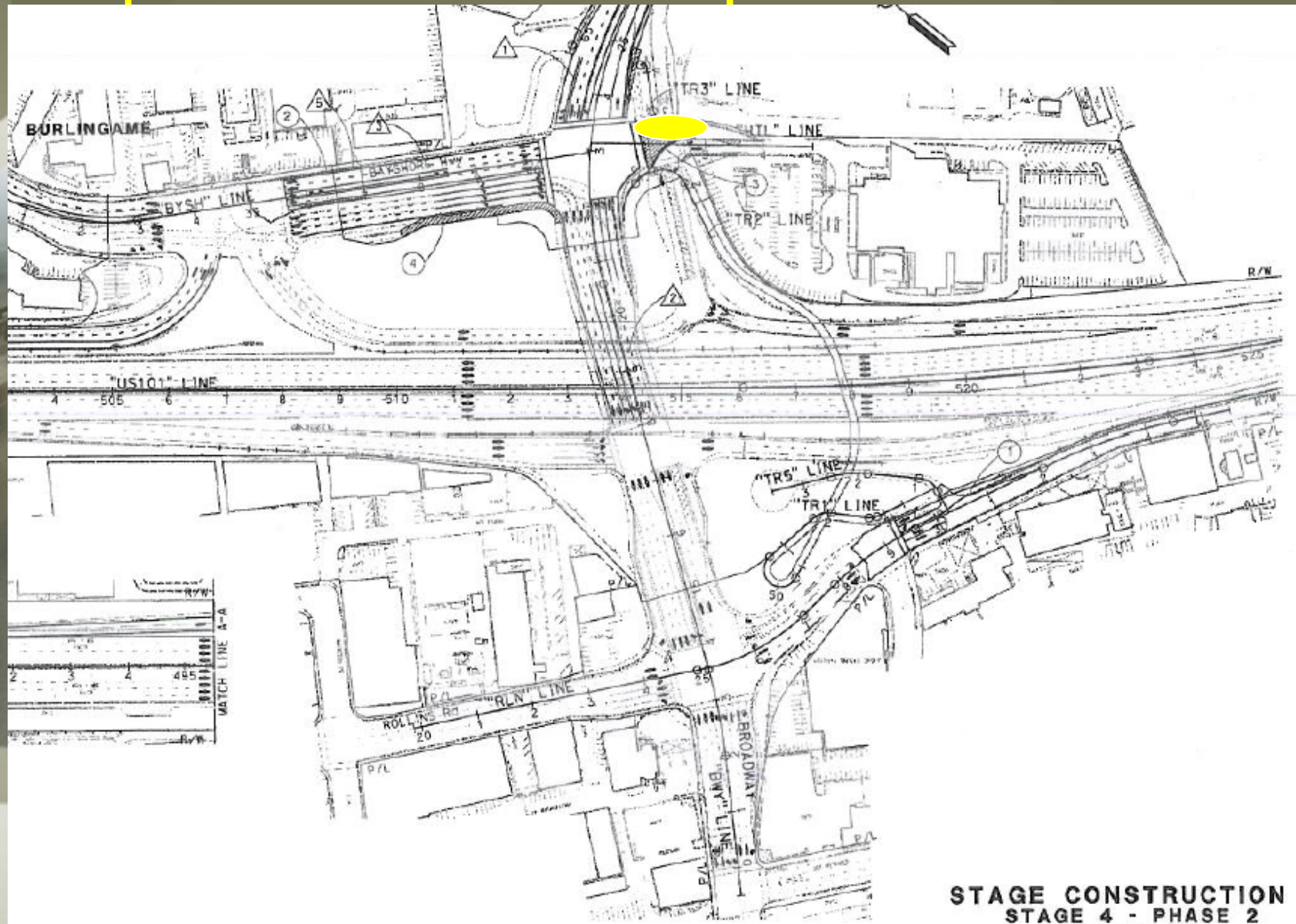
Stage 3 - Open New Overcrossing



Stage 4 – Construct Bayshore Blvd



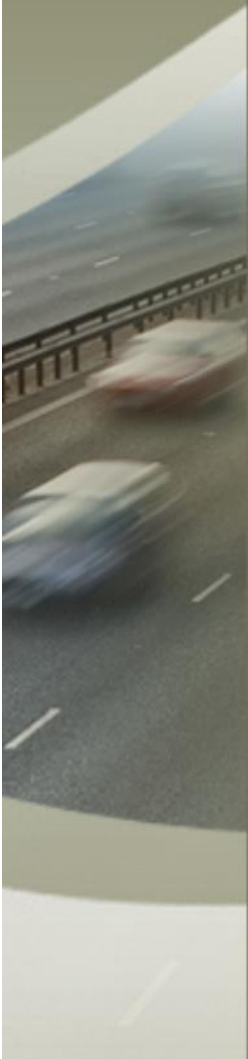
Stage 5 – Construct Driveway, Place Asphalt and Landscape



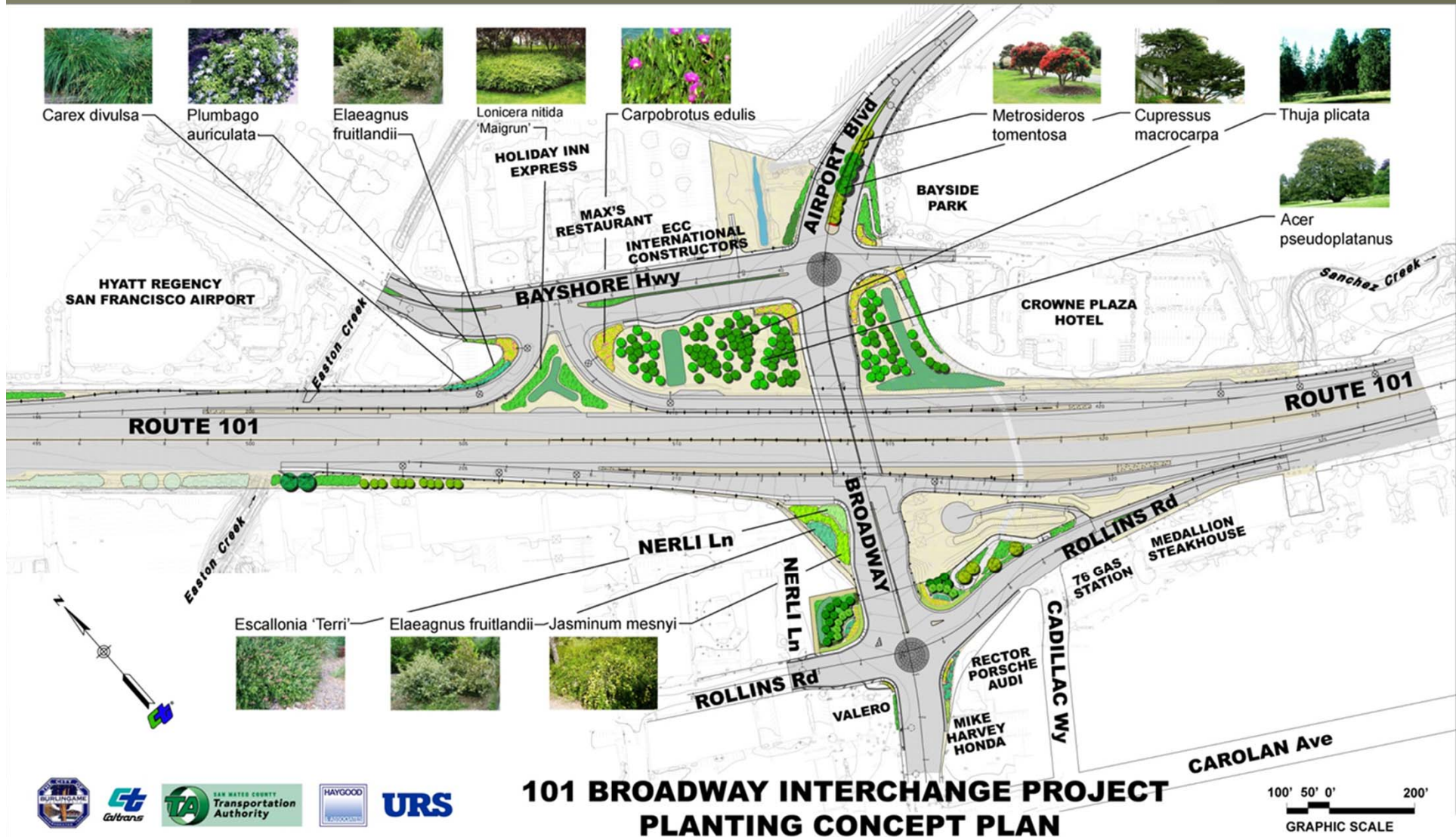
Public Outreach Strategies

Good Public Information equates to Awareness, Safety and Decreased Traffic Demand

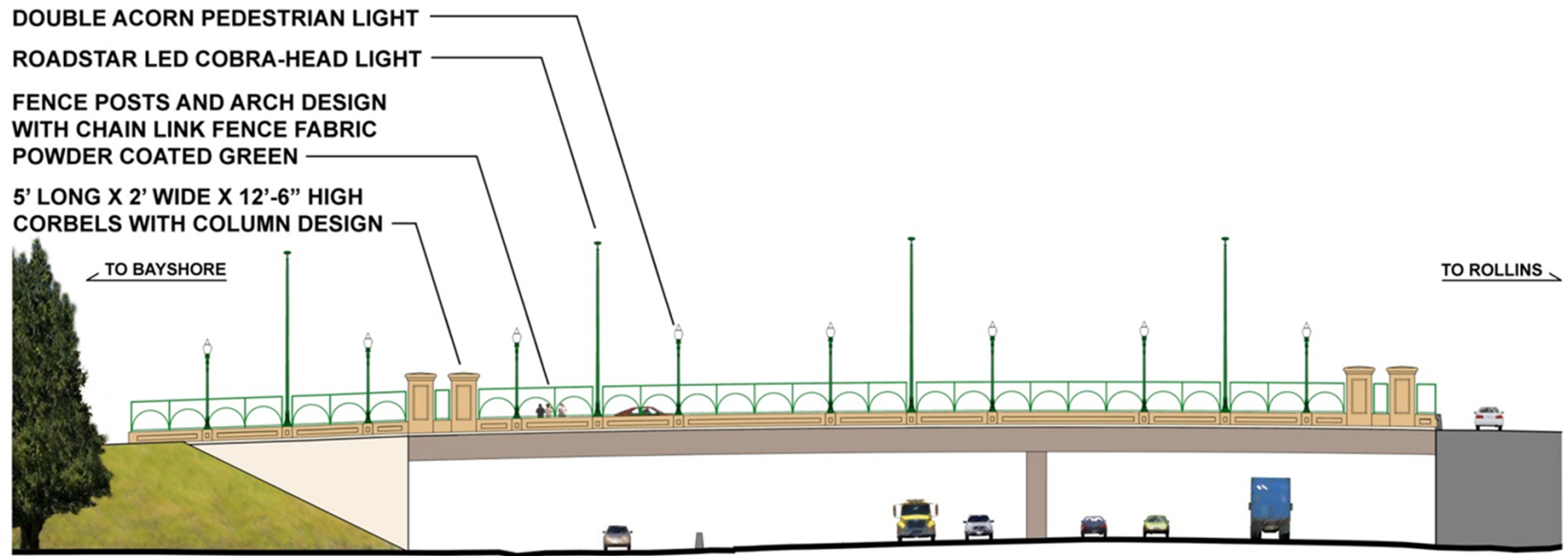
- Weekly construction meetings with stakeholders to provide information and develop strategies
- Construction Updates and Advanced Notices to Media and News Release
- Website and Email Notification through eNews
- Changeable Message Signs (CMS) at key locations
- YouTube, Twitter and Facebook
- Mailers
- Door to Door Contact with Businesses



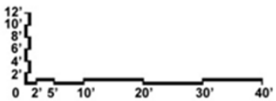
Landscape Plan



Overcrossing Aesthetics



VIEW SOUTH FROM HIGHWAY



**101 BROADWAY INTERCHANGE PROJECT
OVERCROSSING AESTHETICS**

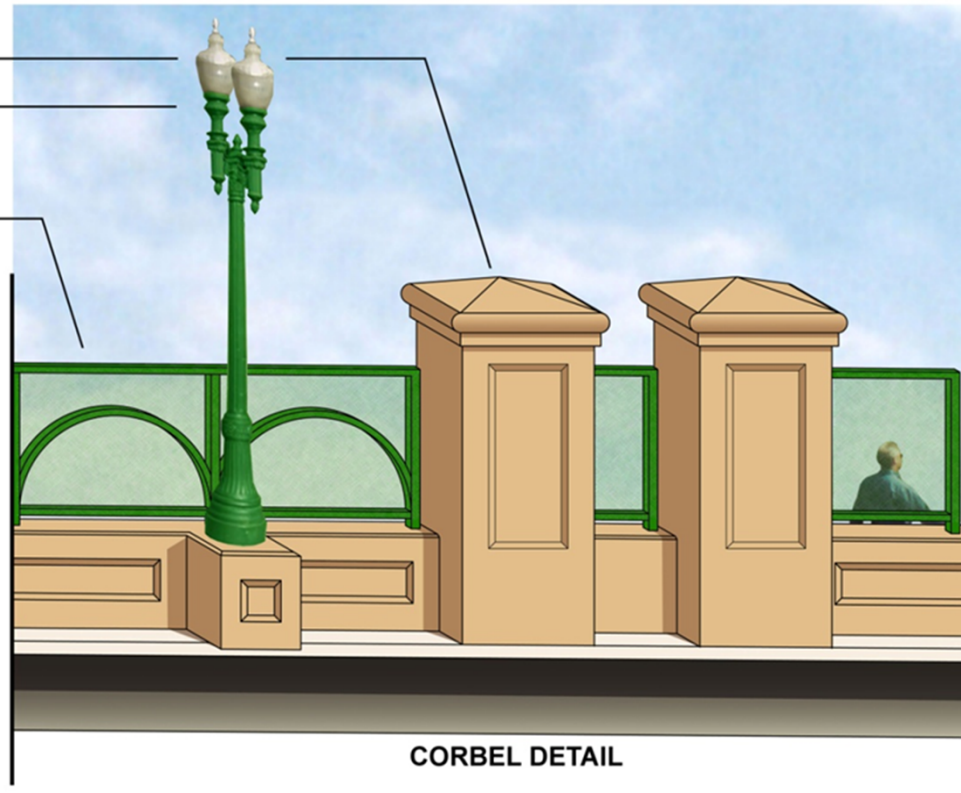
**ARCHED FENCE
AND COLUMN CORBELS**

Overcrossing Aesthetics

5' LONG X 2' WIDE X 12'-6" HIGH
CORBELS WITH COLUMN DESIGN

DOUBLE ACORN PEDESTRIAN LIGHT

FENCE POSTS AND ARCH DESIGN
WITH CHAIN LINK FENCE FABRIC
POWDER COATED GREEN

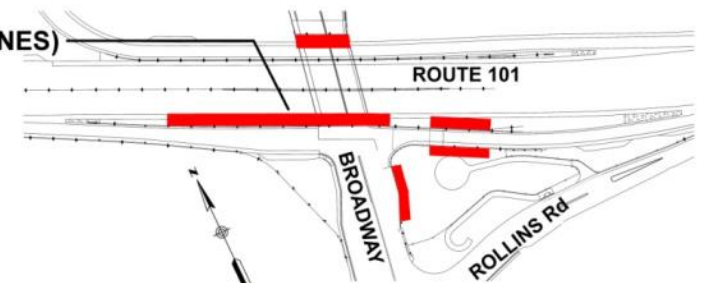


**101 BROADWAY INTERCHANGE PROJECT
OVERCROSSING AESTHETICS**

**ARCHED FENCE
AND COLUMN CORBELS**

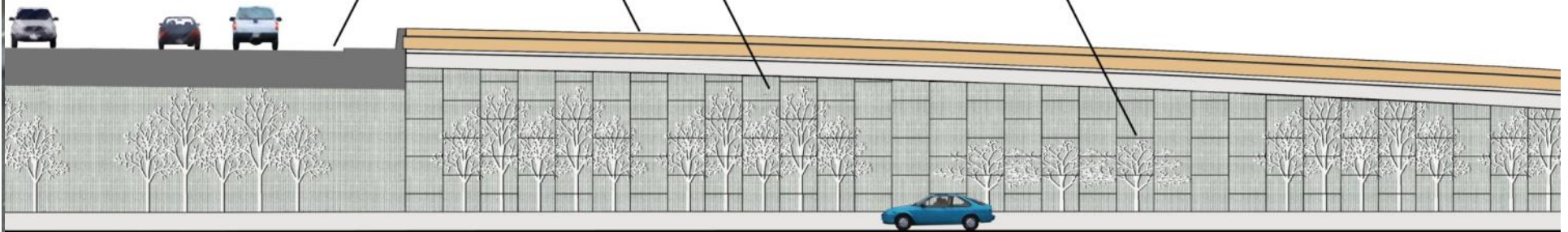
Retaining Wall Aesthetics

TREE PATTERN
LOCATIONS (RED LINES)

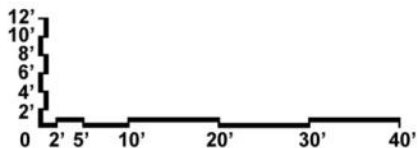


KEY MAP

BULKHEAD AND MSE RETAINING WALLS WITH TREE PATTERN OVER FRACTURED RIB
5' X 5' MSE WALL PANELS, TYPICAL
101 SOUTHBOUND OFF-RAMP TO BROADWAY
BROADWAY OVERCROSSING



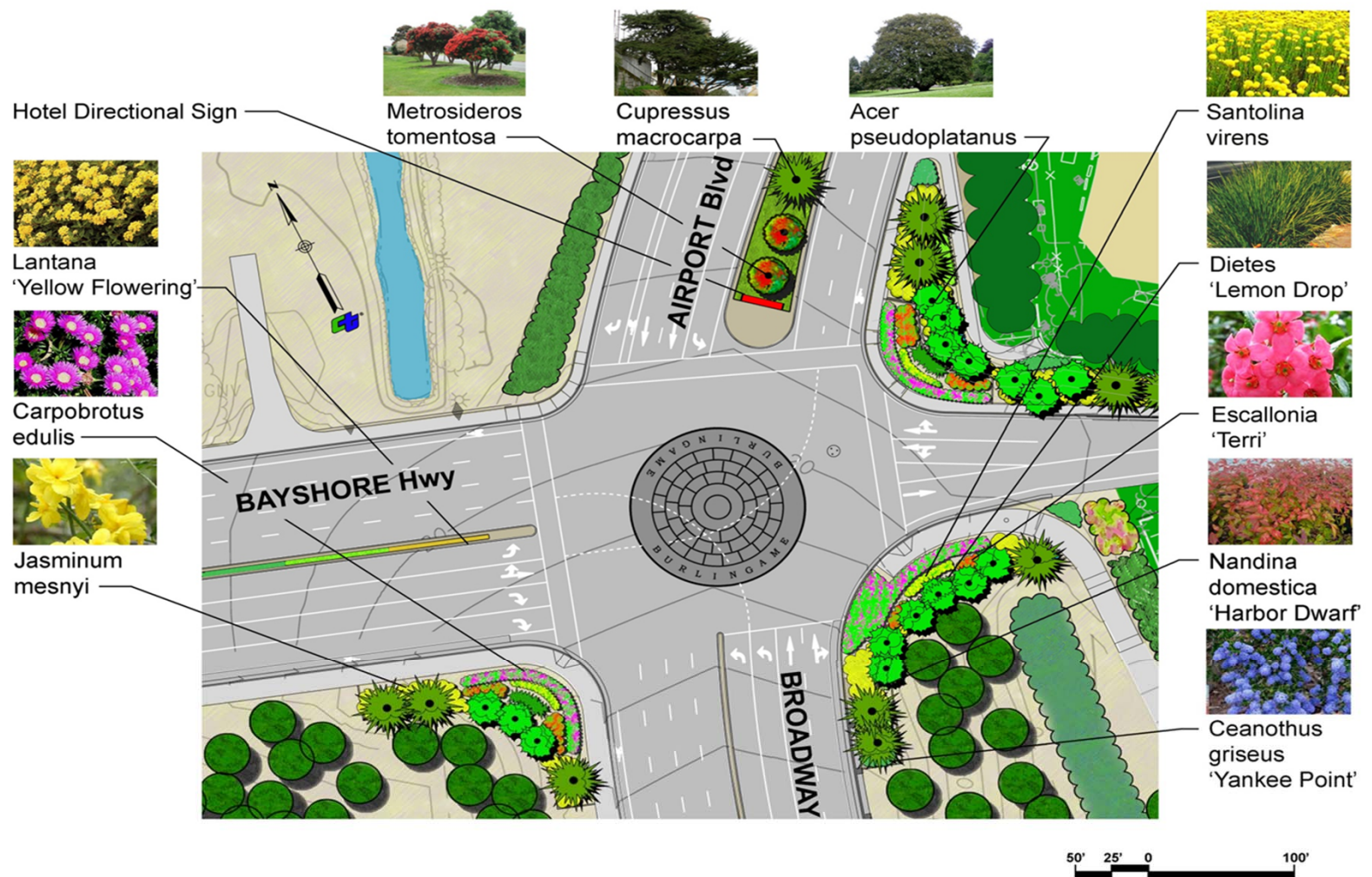
VIEW WEST FROM HIGHWAY



**101 BROADWAY INTERCHANGE PROJECT
RETAINING WALL AESTHETICS**



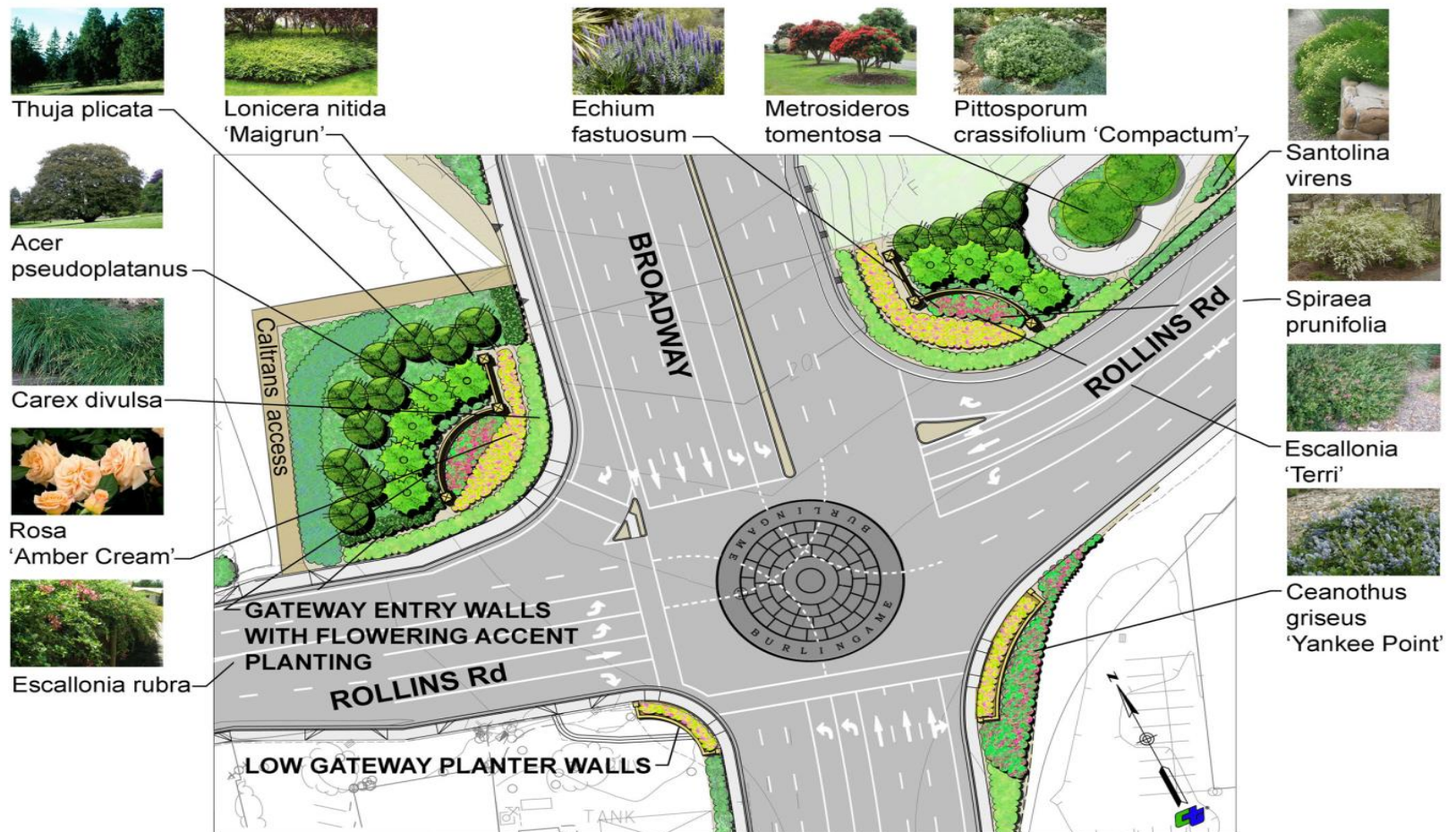
Bayshore/Airport Intersection



**101 BROADWAY INTERCHANGE PROJECT
PLANTING CONCEPT PLAN**

**BROADWAY & BAYSHORE
INTERSECTION**

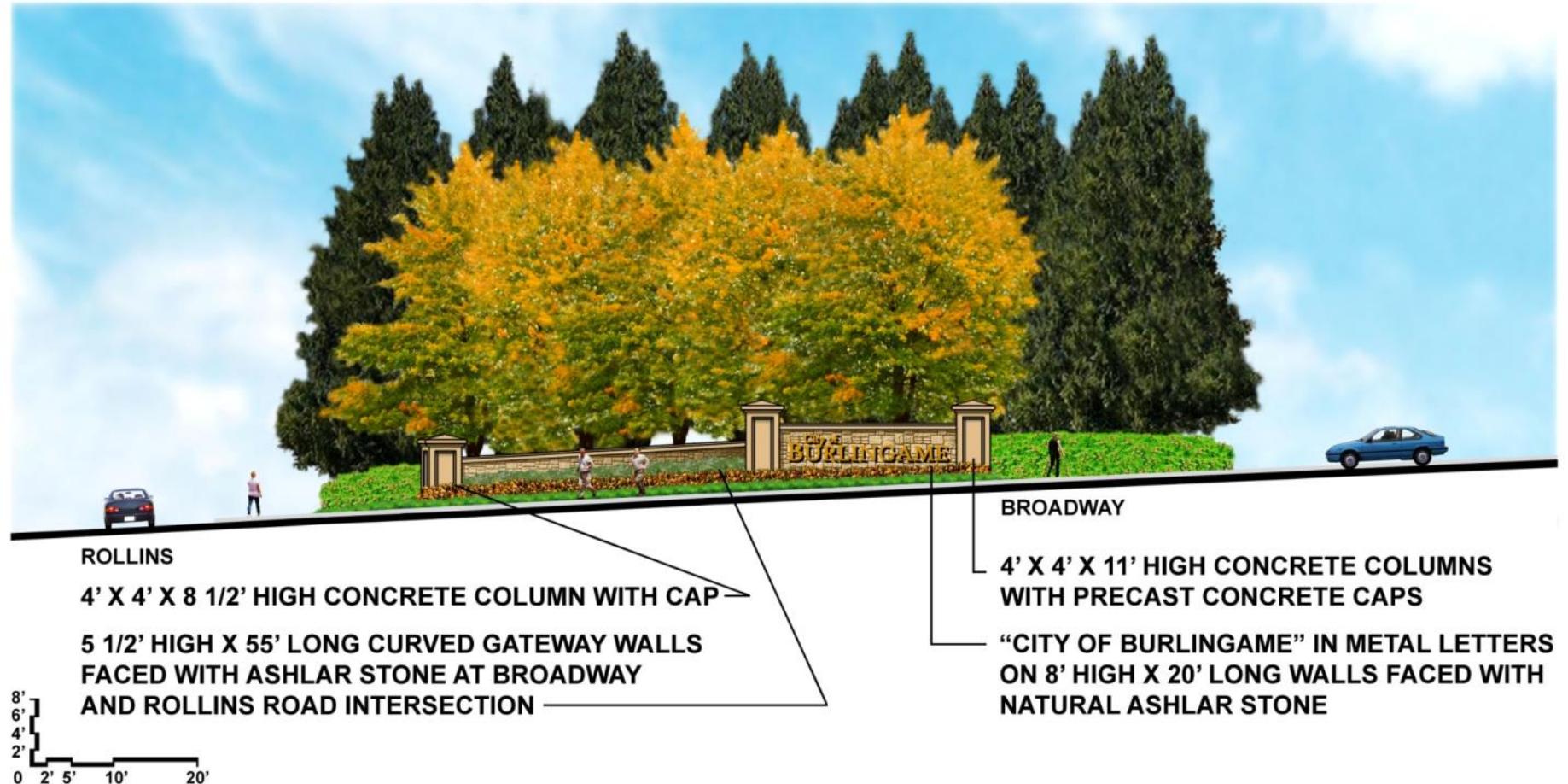
Broadway/Rollins Intersection



**101 BROADWAY INTERCHANGE PROJECT
PLANTING CONCEPT PLAN**

**GATEWAY ENTRY WALLS
BROADWAY & ROLLINS**

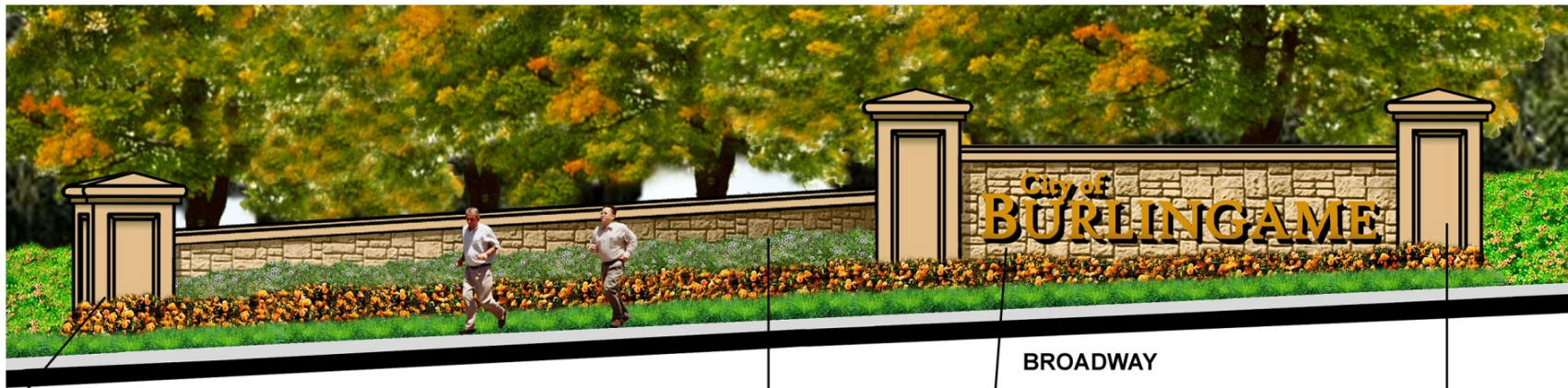
Gateway Structures



101 BROADWAY INTERCHANGE PROJECT
GATEWAY STRUCTURES

GATEWAY ENTRY WALLS
ELEVATION

Gateway Structures



4' X 4' X 8 1/2' HIGH CONCRETE COLUMN WITH CAP
5 1/2' HIGH X 55' LONG CURVED GATEWAY WALLS
FACED WITH ASHLAR STONE AT BROADWAY
AND ROLLINS ROAD INTERSECTION

BROADWAY
4' X 4' X 11' HIGH
CONCRETE COLUMNS WITH
PRECAST CONCRETE CAPS

“CITY OF BURLINGAME” IN METAL LETTERS
ON 8' HIGH X 20' LONG WALLS FACED WITH
NATURAL ASHLAR STONE



101 BROADWAY INTERCHANGE PROJECT GATEWAY STRUCTURES

GATEWAY ENTRY WALLS DETAIL

