

Ralston-Howard Grove

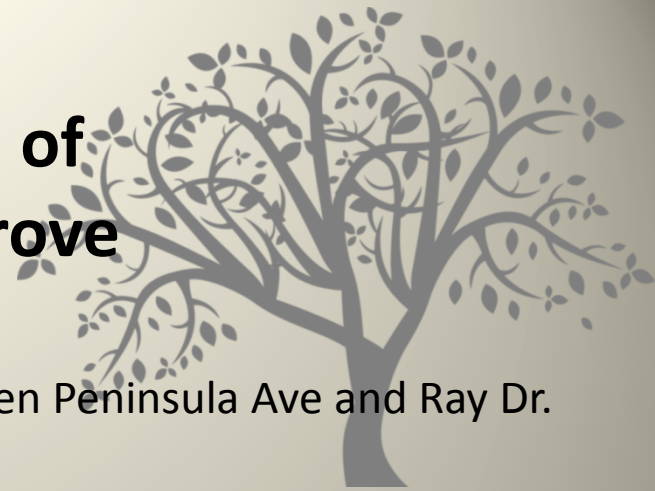


ECR Task Force

Bob Disco: Parks Superintendent/City Arborist

2017

Historic Considerations of The Howard - Ralston Grove



- The Howard-Ralston Eucalyptus Tree Row stretches between Peninsula Ave and Ray Dr.
- The row of trees is considered an important cultural resource contributing to the growth, development and aesthetics of the Burlingame.
- Recognized by CalTrans as a historical resource under the California Environmental Quality Act (CEQA).
- In 2012, it was listed in the National Register as a Historical Place.
- The Howard Ralston Eucalyptus Tree Rows is a Historic District of the Caltrans Right of Way, and includes historically significant trees, as well as other trees planted continually over the decades.
- Continuous history of activism with regard to tree preservation.

Howard - Ralston Grove



- Originally planted around 1874 with Elms and Eucalyptus.
- In 1934 there were 707 trees between Peninsula and Mills Ave.
- As of 2012, the row now consists of 557 trees.
 - 356 historical significance (historic eucs, elms and young contributing elms)
 - 201 non-historic trees ("other")
- To maintain integrity consistent with the baselines established in the 2012 National Register listing, the Tree Row should strive to maintain at least the same ratio of historically contributory trees to non-contributing (other) trees--roughly 70:30 ratio.
- Trees selected in the non-contributing (other) category should be species that possess similar size and stature, and contribute visual aspects consistent with the existing tree row.
- Currently there are 239 historic eucalyptus and approx. 115 historic and young elms.

Historic Eucalyptus

Original eucalyptus planted by McLaren



Historic Elm

Original Elms planted by McLaren



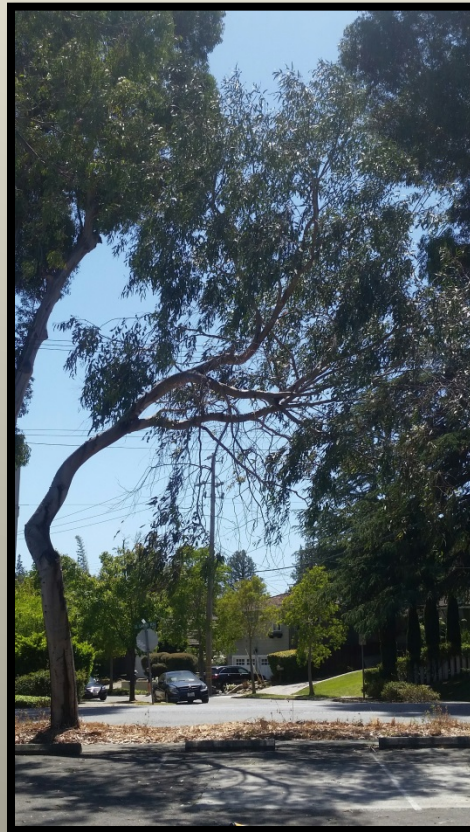
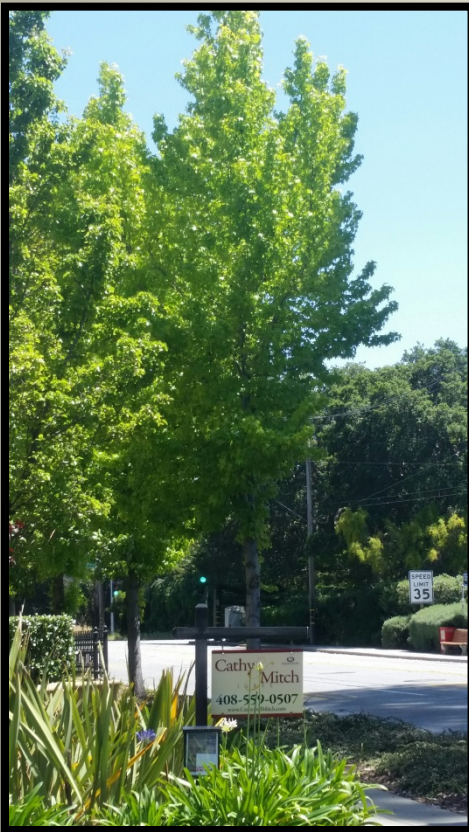
Contributing Elm

New elms planted and recognized as replacement trees for the grove

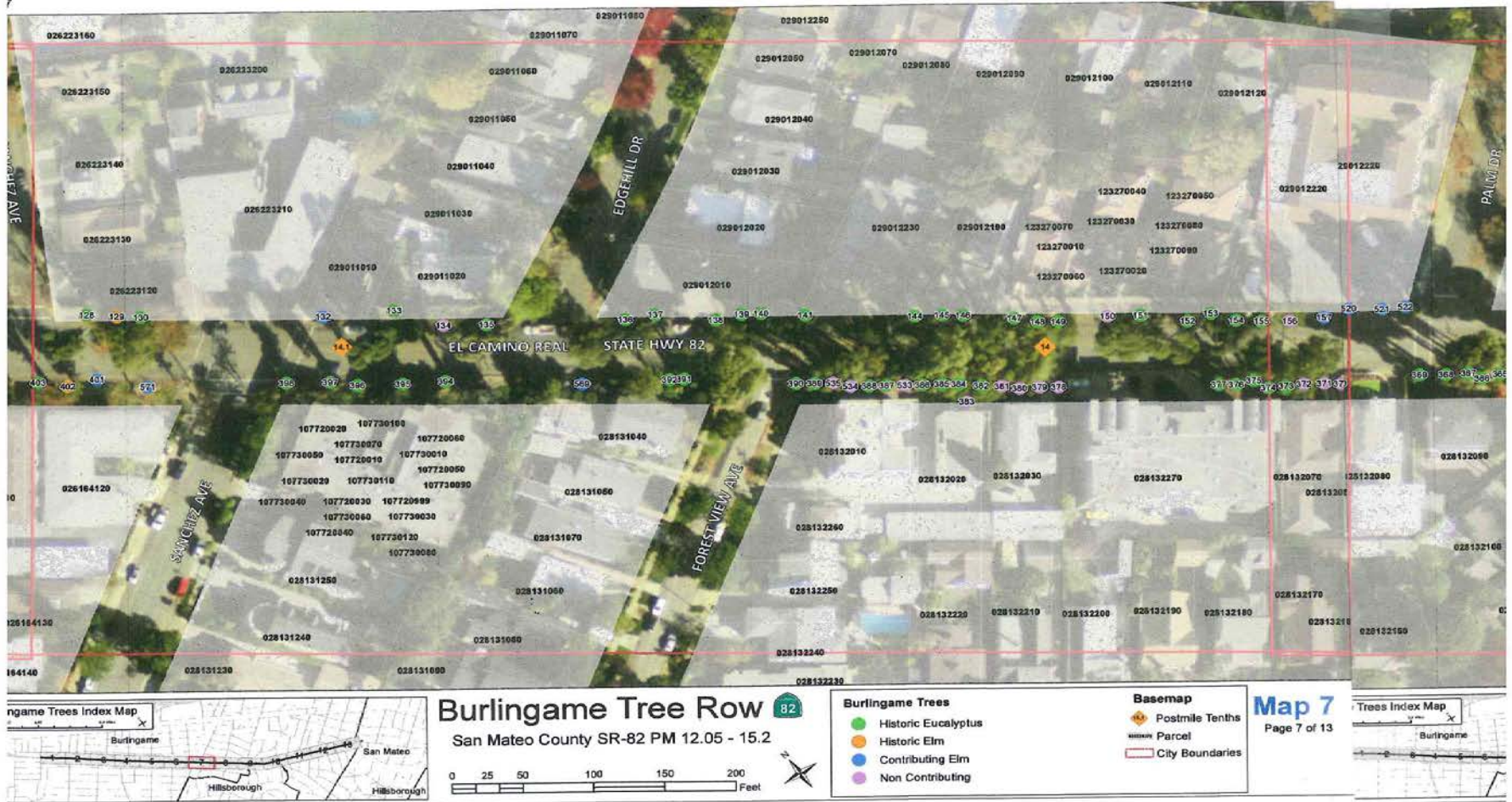


Non-Contributing (Other)

All other trees planted throughout grove that are not elms
(liquidambars, sycamores, microtheca eucalyptus, redwoods, acacias)



Study Site: Sanchez to Palm



Task Force Study Area : Sanchez to Palm

Total 61 trees

47 Historic Trees

14 Non-Contributing (other) trees

Goal: Retain the integrity of the grove by striving to maintaining a 70:30 ratio of historically contributing trees to other trees.



Potential Trees for El Camino



ECR Task Force

Bob Disco: Parks Superintendent/City Arborist

2017



Goal: Retain the integrity of the grove by striving to maintaining a 70:30 ratio of 'contributing' trees to 'other' trees.

Contributing Trees

Trees we must have to maintain the integrity of the Row



Eucalyptus citriodora

Lemon Scented Gum

'Citriodora'

- Height: 70+ft
- Width: 30-40 ft
- Evergreen
- Shape: Upright & Rounded
- Spacing: 25
- Foliage: Dark green
- Fruit: 3/8" capsule
- Fast Growing



1800 Easton

Ulmus americana

'Princeton'

Princeton Elm

- Height: 50-70 ft
- Width: 35-40 ft
- Deciduous
- Shape: Vase shaped
- Spacing: 25
- Foliage: Dark green
- Fast Growing
- Resistant to DED



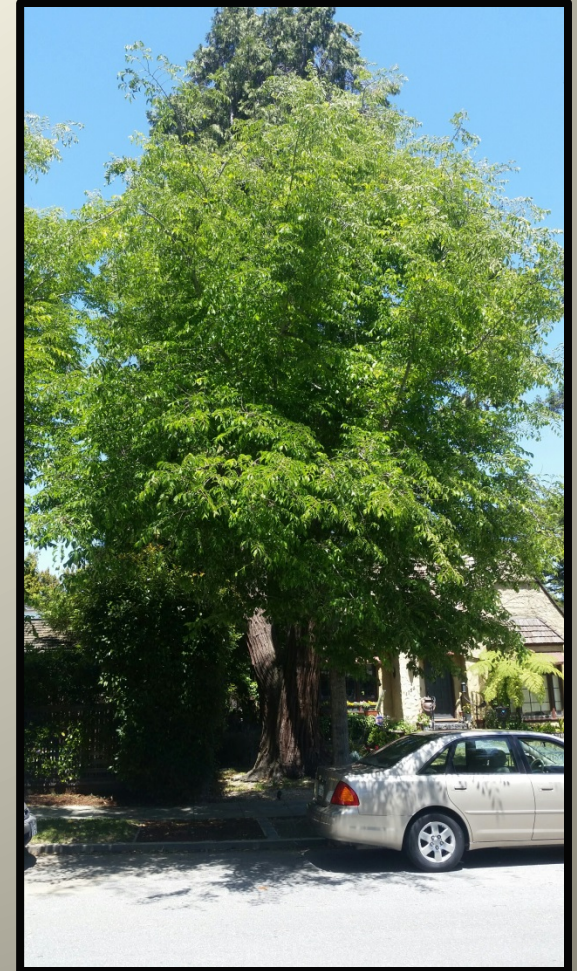
1157 Cambridge



Ulmus 'Patriot'

Patriot Elm

- Height: 40-50 ft
- Width: 25-35 ft
- Deciduous
- Shape: Vase shaped
- Spacing: 25
- Foliage: Dark green
- Fast Growing
- Resistant to DED
- Single leader



1448 & 1452 Cambridge

Zelkova serrata

Japanese Zelkova

'Green Vase'

- Height: 60-70 ft
- Width: 50-55 ft
- Deciduous
- Shape: V- Shaped
- Spacing: 25
- Foliage: Bright green
- Fast Growing
- Substitute for American elms; resistant to DED; no serious pests.



123 Anita Rd.

Other Trees

Trees used in specific locations, as fillers and for variety



Platanus acerfolia

London Plane Tree

‘Columbia’

- Height: 40-80ft
- Width: 30-40 ft
- Deciduous
- Shape: Upright & Rounded
- Spacing: 25
- Foliage: Medium green
- Fruit: 1" balls
- Fast Growing
- Resistant to anthracnose



2212 Hillside Dr.



Quercus suber

Cork Oak

- Height: 40-70 ft
- Width: 40 ft
- Evergreen
- Shape: Round
- Spacing: 25
- Foliage: Dark green
- Fruit: 2-3" acorns
- Slow Growing
- Susceptible to some disease and insects



Wash Park Picnic area

Carpinus caroliniana

American Hornbeam

- Height: 35-40 ft
- Width: 25 ft
- Deciduous
- Shape: columnar-Oval
- Spacing: 25
- Foliage: Light green
- Slow Growing



Wash Park near back patio



Tristania conferta

Brisbane Box

- Height: 30-40
- Width: 25 ft
- Evergreen
- Shape: Oval
- Spacing: 25
- Foliage: Dark glossy green
- Slow Growing
- Tolerates, drought, poor soil, smog, must be well staked.



860 Walnut Ave

Questions

