

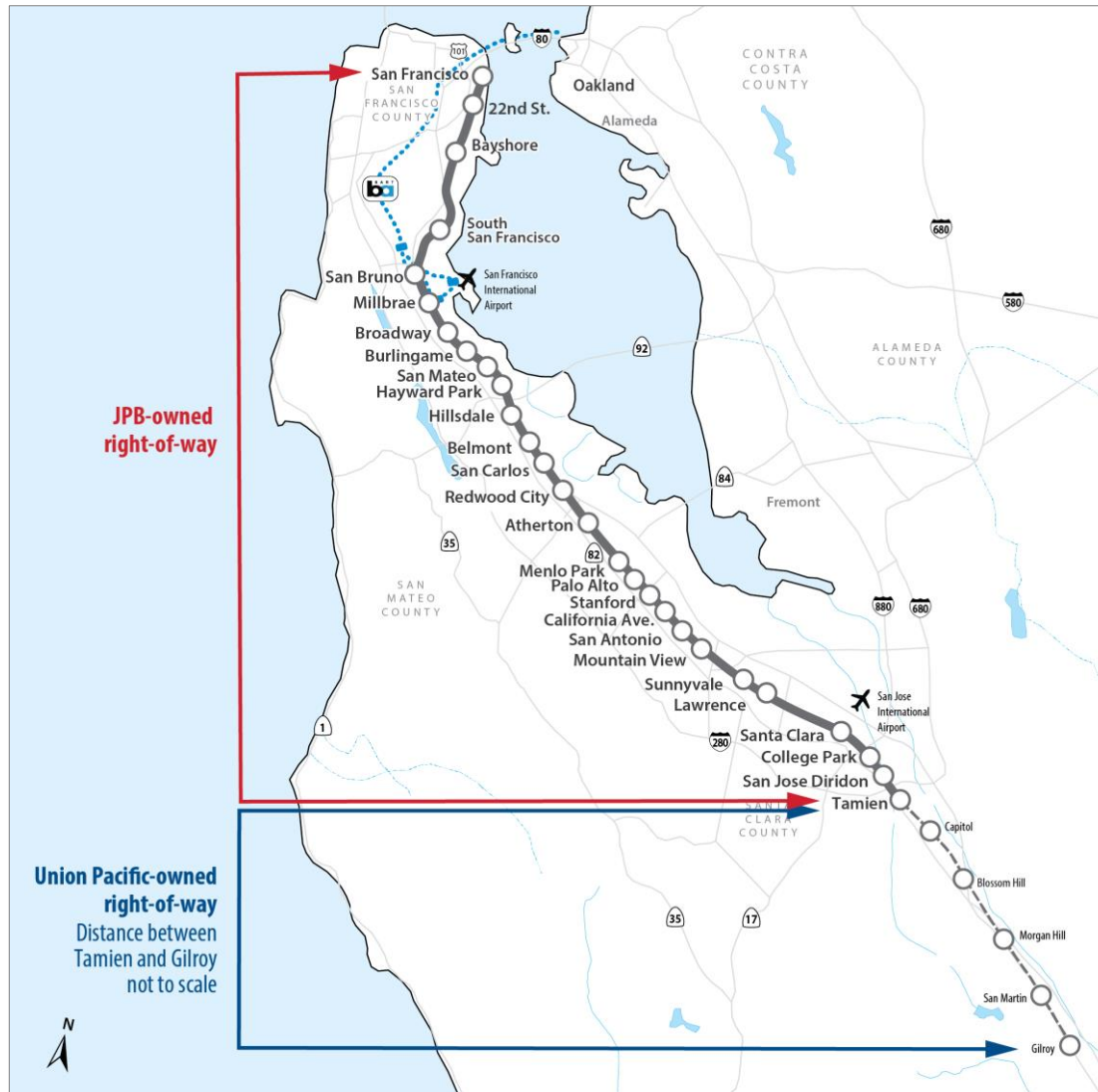
CALTRAIN ELECTRIFICATION UPDATE

Burlingame Community Meeting
February 3, 2021

AGENDA

- Caltrain System Overview
- Project Overview
- Burlingame Construction Activities
- Questions

CALTRAIN SYSTEM



- 31 Stations Gilroy to San Francisco
- 68 Weekday Trains
- At-Grade Crossings, Viaducts, and Bridges
- Intermodal Connections
- Bike Commuters

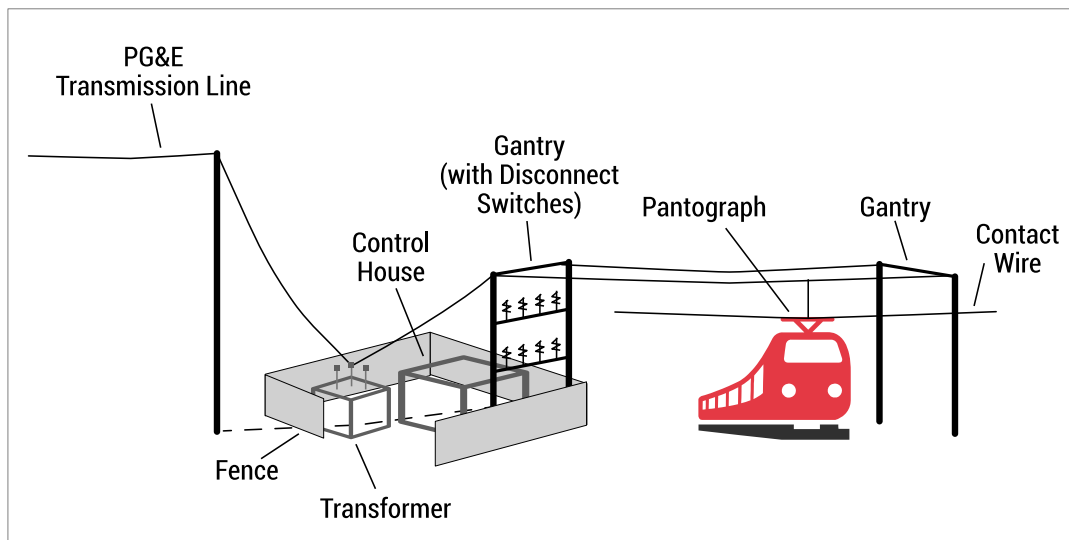
PROJECT DESCRIPTION

Project Area



- 51 miles
- San Francisco to San Jose (Tamien Station)

Project Elements



Electrification

- Overhead Contact System (OCS)
- Traction Power Facilities

Electric Trains*

- 19 7-car train sets
- 133 electric cars

*Includes 2018 State TIRCP Funding

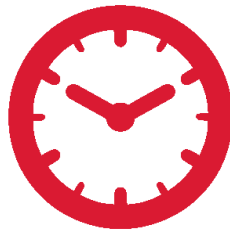
PROJECT DESCRIPTION

Service Elements



Speed

- Up to 79 mph



Service Increase

- 6 trains / hour / direction
- More station stops / reduced travel time
- Restore Broadway service



Mixed-fleet Service (interim period)

Continue Tenant Service

- ACE, Capitol Corridor, Amtrak, Freight

PROJECT BENEFITS



**Improved Train
Performance,
Increased Service
and Greater Capacity**



**Improved Regional Air
Quality and Reduced
Greenhouse Gas
Emissions**



**Positive Economic
Benefits for the
Region**

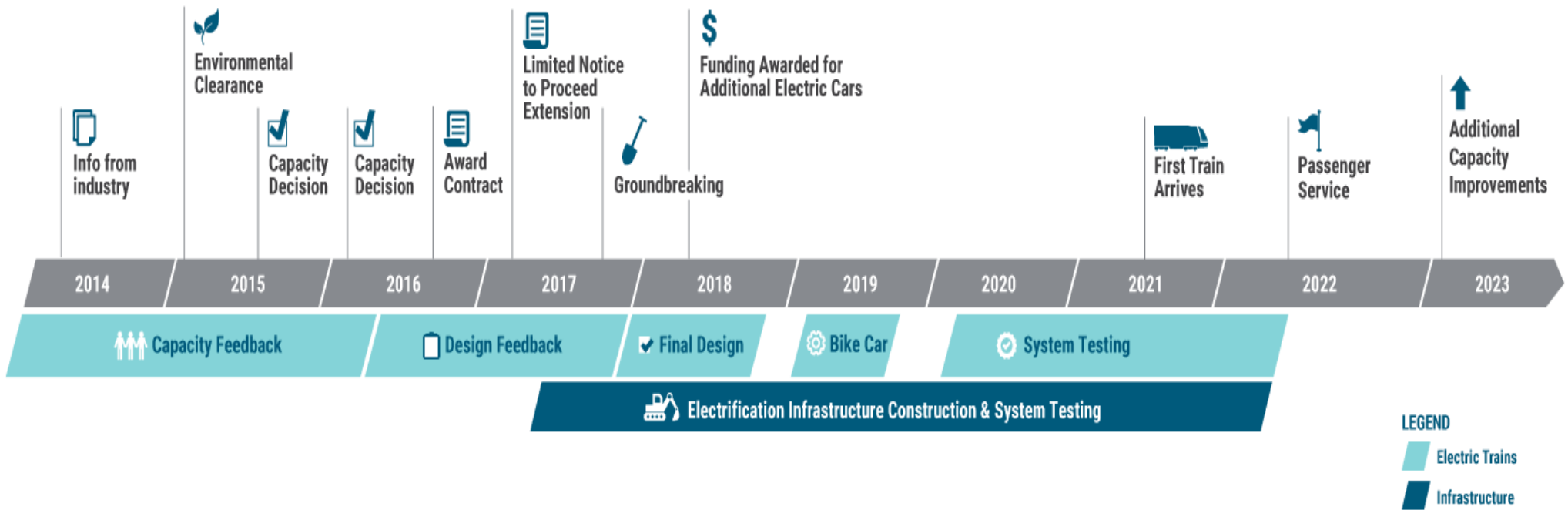


**Reduced Engine
Noise Emanating
from Trains**



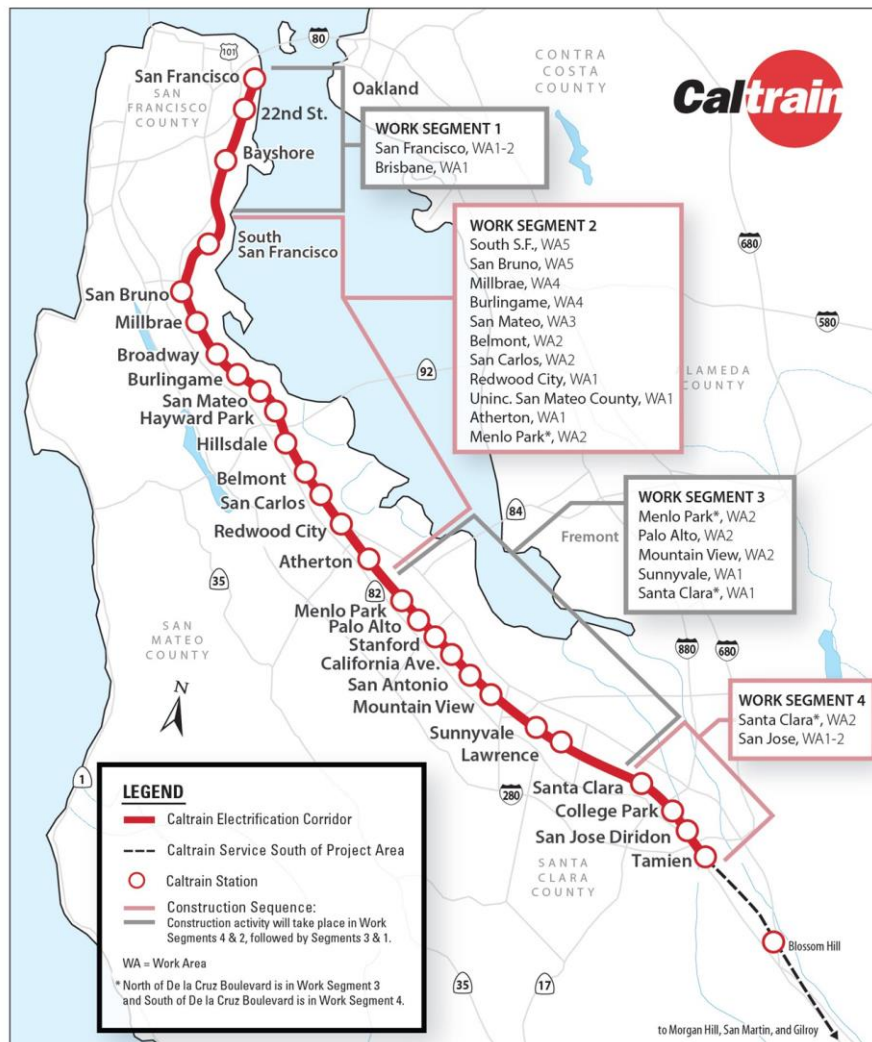
**Increased Revenue
and Reduced
Fuel Cost**

SCHEDULE

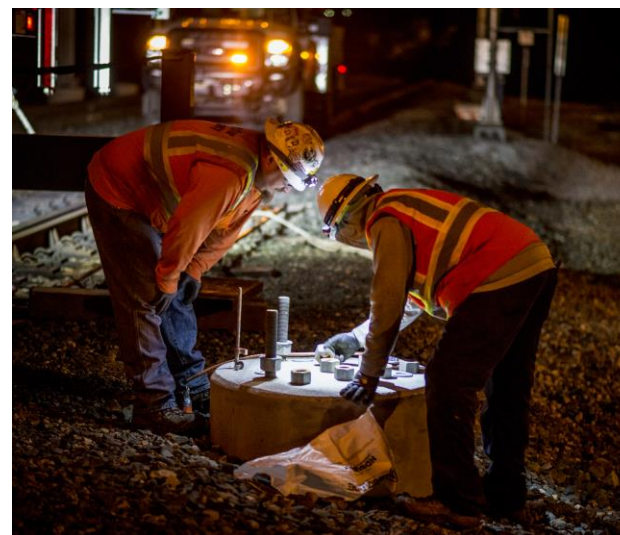


* Note: Schedule subject to change

CONSTRUCTION PHASING



- 51 Miles Corridor
- 4 Work Segments
- 2,600 Poles
- 10 Traction Power Facilities



BURLINGAME



FIELD WORK PROGRESSION

Work Completed	<ul style="list-style-type: none">• Utility Survey• Geotechnical Investigations• Disposal of Soil from Geotechnical Investigations• Soil Resistivity Testing• Site Surveys• Signal Cable Inspections
Work In Progress	<ul style="list-style-type: none">• Tree Pruning/Removal• Potholing• Foundation Installation• Pole and Wire Installation
Future Work	<ul style="list-style-type: none">• Paralleling Station Construction

FUTURE CONSTRUCTION

Burlingame

Date	Work Activity	Expected Completion*
In Progress	Tree Pruning/Removal	Summer 2021
In Progress	Potholing	Summer 2021
In Progress	Foundation Installation	Fall 2021
In Progress	Pole Installation	Fall 2021
In Progress	Wire Installation	Fall 2021
February 2020	Paralleling Station Construction	Fall 2021

FOUNDATION CONSTRUCTION

- Excavation
- Rebar and Anchor Installation
- Electrical Grounding
- Concrete Fill

FOUNDATION INSTALLATION



POLE INFORMATION

- 2,600 Installed throughout Corridor
 - Approx. 139 poles in Burlingame
- Pole Height: 30-50'
- Pole Spacing: ~180' apart

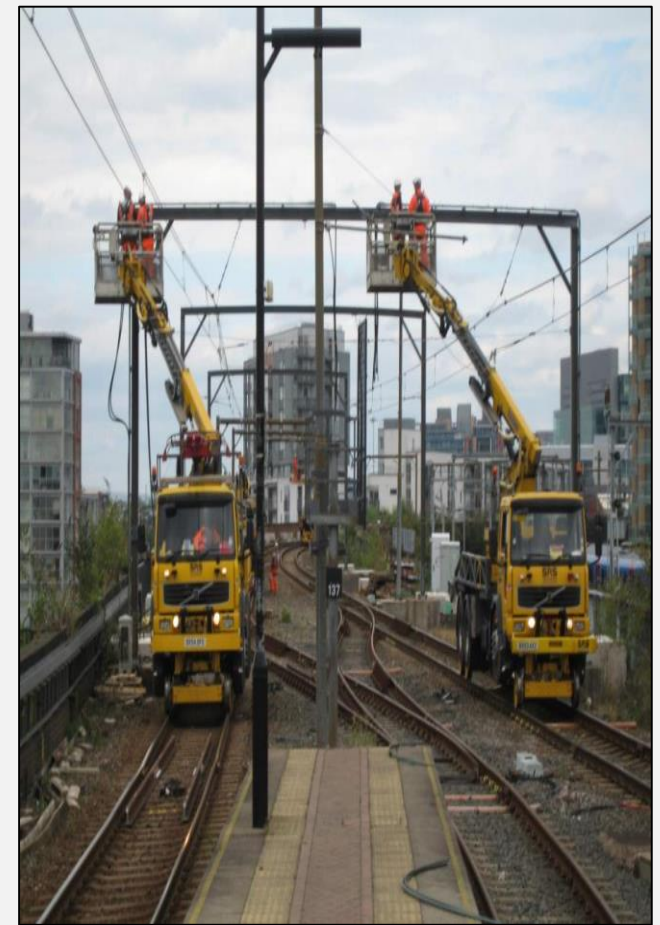
POLE TYPES BURLINGAME



Single Track Cantilever

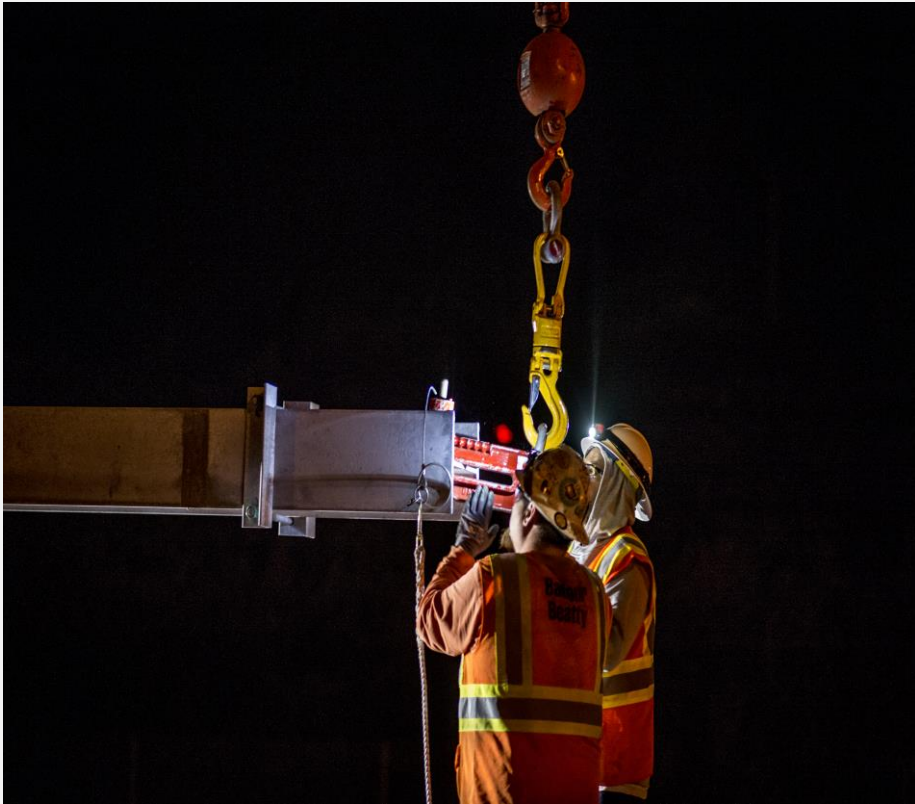


Two Track Cantilever

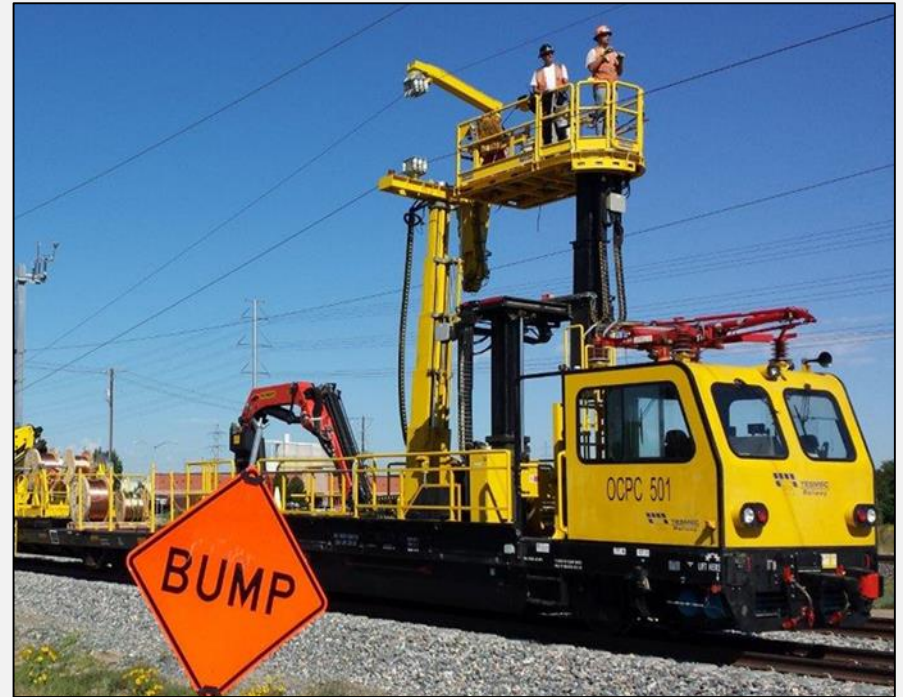


Portal

POLE INSTALLATION



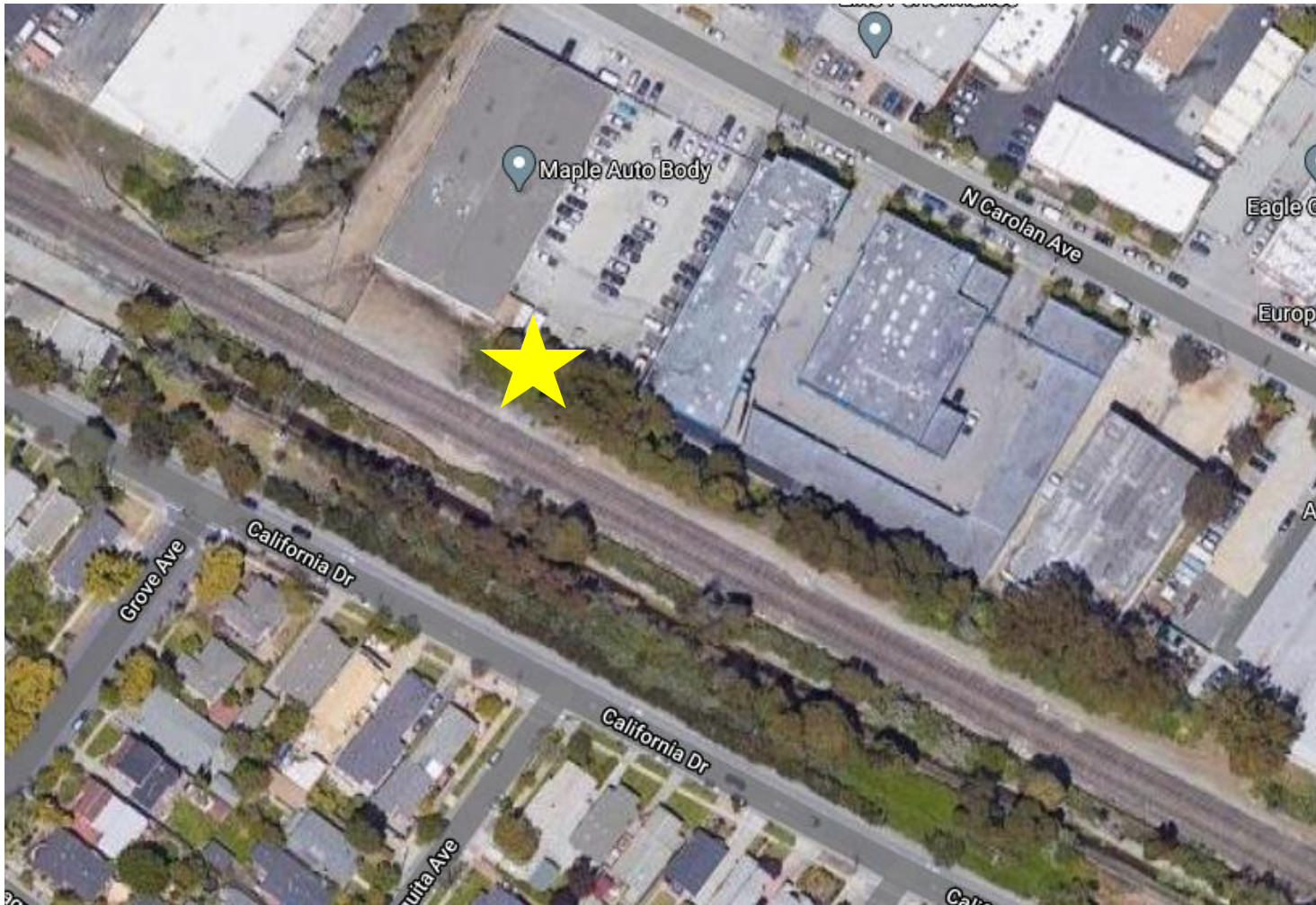
STRINGING WIRE



TRACTION POWER FACILITIES

- 10 Traction Power Facilities Installed throughout Corridor
 - 1 Paralleling Station installed in Burlingame
 - Gantry structures up to 63'
 - Accommodates future elevated track as part of Broadway Grade Separation Project
- Provides electrical power to trains through the Overhead Contact System
- Unmanned station
- Day and weekend construction work
- Limited night work during construction

PARALLELING STATION LOCATION



PARALLELING STATION LAYOUT



PARALLELING STATION EXAMPLE

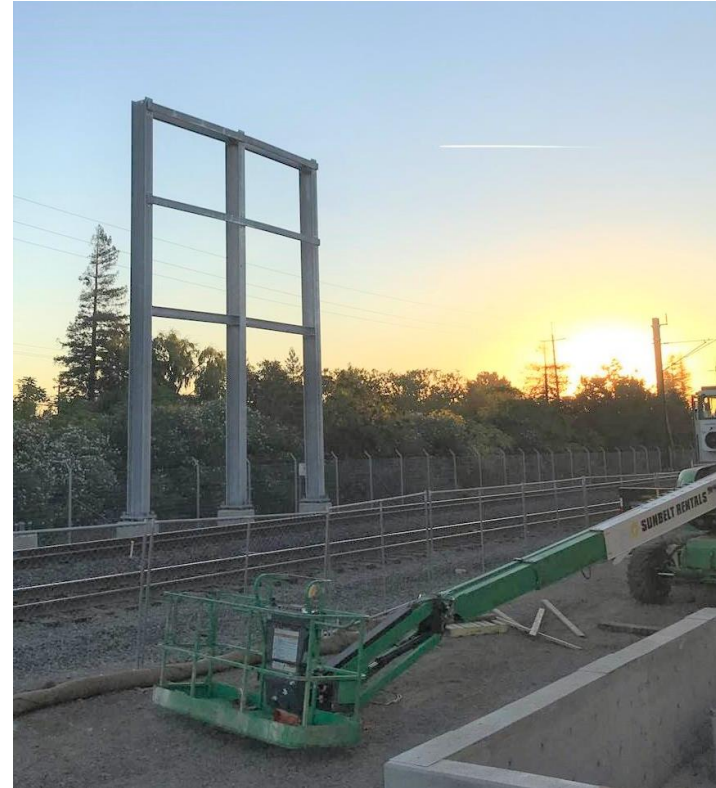


Paralleling Station - Amtrak Northeast Corridor

GANTRIES EXAMPLE



Main Gantry – San Mateo



Strain Gantry – Palo Alto

CONSTRUCTION INFORMATION

- Work will occur during day and night
- Some 24-hour weekend work
- Crews will utilize acoustical barrier blankets and position lights away from homes
- Dedicated hotline for construction complaints

PUBLIC OUTREACH

CalMod

CALTRAIN MODERNIZATION PROGRAM
Test Pile Construction Activities

DAY TIME WORK
08/28/17 - 09/1/17

ANTICIPATED WORK HOURS
7:00 a.m. - 5:00 p.m.

CREWS CONDUCTING WORK IN YOUR AREA TO INSTALL AND TEST FOUNDATION PILES

During the week of August 28, Caltrain electrification crews will be working in your area to construct one test pile foundation for integrity testing. The piles will be installed within the Caltrain right-of-way.

Crews will be conducting the work over a two day period between Monday, August 28 and Friday, September 1, between the hours of 7 a.m. and 5 p.m. Crews will return at a later date to test the integrity of the installed piles.

Main construction activities include:

- Survey and layout of proposed pile test location
- Trucks and equipment working near Caltrain right of way
- Drill holes for placement of test piles
- Pour concrete and install rebar
- Backfill holes to cover work areas

We apologize for any inconvenience this may cause. The field team will work as quietly as possible. Thank you for your patience and understanding as we deliver these critical benefits to our communities.

Please visit our website at www.caltrain.com/PCEPconstruction to sign-up for weekly construction updates.

We appreciate your patience during construction.

Doorhanger

CALTRAIN ELECTRIFICATION PROJECT
STATUS UPDATE | January 2018

MILESTONES

Please keep in mind that testing and construction will overlap as each Segment will be tested individually, prior to final system testing. <Subject to change.

KEY REGIONAL BENEFITS 2040

GREENHOUSE GASES (ANNUAL)	176,000 METRIC TONS CO ₂	CO ₂
DIESEL TO ELECTRIC	LOWER FUEL COSTS	\$
TRAFFIC CONGESTION	619,000 VEHICLE MILES	CAR
	21% INCREASE	DAILY RIDERSHIP
	\$2.5 BILLION	ECONOMIC BENEFITS
	MORE SERVICE	MORE FREQUENT & FASTER TRIPS

FOR MORE INFORMATION

www.calmod.org | 650.399.9659 | Project Outreach Office
 Para traducción lláma al 1.800.660.4287 | 2121 S. El Camino Real, Bldg A, Ste A-100
 如需翻譯,請電: 1.800.660.4287 | San Mateo, CA 94403

Factsheet

CALTRAIN MODERNIZATION

IMPROVING CONVENIENCE
An electrified system means the trains can run more frequently and more efficiently.

INCREASING CAPACITY
CalMod upgrades give us room to grow, initially increasing capacity by over 30%.

BOOSTING ECONOMIES
CalMod will also provide economic benefits, including creating nearly 10,000 jobs across the country.

ADVANCING SUSTAINABILITY
Replacing old diesel trains with new electric trains will reduce GHG and improve air quality.

These are just a few examples of how Caltrain and the CalMod program are innovating to better serve the Bay Area. Learn more at CalMod.org and stay in touch with us on social media!

Caltrain

Postcard



Public Meeting


PUBLIC OUTREACH

- Subscribe to Weekly Updates
 - Visit www.calmod.org/get-involved
- Social Media
- Construction Outreach Office

CALMOD CONTACT INFORMATION

WEEKLY UPDATES  CalMod.org/get-involved

EMAIL  CalMod@caltrain.com

PHONE  650-399-9659
800-660-4287 (Toll Free)

WEBSITE  CalMod.org

FACEBOOK  www.facebook.com/caltrain

TWITTER  @caltrain