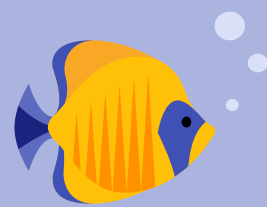


Quick Guide to Stormwater Pollution Prevention for Businesses



Your business is in a watershed...

A watershed is a land area that drains rain and water into a creek, lake, bay, or groundwater aquifer. Rain and irrigation wash pollutants off surfaces like streets, sidewalks, roofs, and parking lots, into storm drains and creeks, and out to the San Francisco Bay. These pollutants harm sealife, while degrading our local water quality. It is your responsibility to ensure wash water from your business does not enter a storm drain. Learn how to prevent stormwater pollution sourced from these **local areas of concern!**

General Housekeeping



- Inspect and clean outdoor areas on a regular basis.
- Properly dispose chemicals, fats, oils, and grease in bins, not drains.
- Only rain down the storm drain! Ensure wash waters go down the indoor sanitary sewer drain, and never the outdoor storm drain.



Material Storage



- Always store materials indoor when possible.
- For outdoor storage: protect materials from rain and add drip pans under liquid containers.
- Label all materials and train all employees on proper spill cleaning.



Waste Storage & Recycling



- Rinse waste containers in areas that drain to the sanitary sewer, not the storm drains.
- Make sure dumpsters are not overfilled and lids are kept closed.
- Provide recycle and green waste bins.



Litter



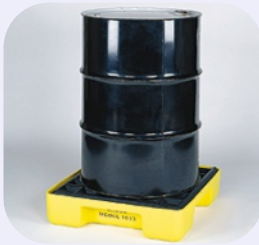
- Provide enough trash bins for customers and employees to use.
- Beautify your community by picking up litter (e.g., cigarette butts, plastic products) daily.
- Reduce plastic consumption. Promote use of reusable items and offer compostable items, instead of plastic ones.



Landscaping



- Prevent pesticides (e.g., weed killers) from entering the storm drain.
- Use less toxic alternatives to pesticides. For more information, visit www.ourwaterourworld.org



Have questions? Need more info? Please contact:



Burlingame Stormwater Program
650-558-7381
stormwater@burlingame.org

Additional Resources:

San Mateo Countywide Program
www.flowstobay.org

The City of Burlingame
www.burlingame.org/stormwater

How to “KEEP IT CLEAN”

SIDEWALKS AND PATIOS

Sweep up food and trash, then wash. Dispose of wash water into indoor floor drain or mop sink. Wash water may NOT be discharged into a storm drain, alley, or gutter.

EMPLOYEES, TENANTS, AND CONTRACTORS

Make sure your employees and the companies you hire (e.g. trash haulers, grease recyclers, and pressure washers) know how to do the job right!

ONLY RAIN DOWN THE STORM DRAIN

It is illegal to dump anything into a gutter or the storm drains.

STORM DRAINS

Storm drains flow directly to our creeks. Nothing but rainwater should enter them. You must prevent pollutants from entering a storm drain or from leaving your site.

EMPLOYEE BULLETIN BOARD AND TRAINING

Post brochure in a common employee area. Provide training to employees for daily tasks to prevent spills and illegal discharges.

GREASE BIN

- Keep grease container covered and clean.
- Contact service provider if bin is not clean.
- Wipe off or scrape up grease spills.
- Have grease picked up by rendering company.
- Grease spills may result in fines.
- Check your grease trap weekly.

INTERIOR CLEANING/MOP SINK

Wash mats, kitchen hoods, filters, and garbage cans indoors. Never pour wash water into storm drains, alley, or gutter. Do not sweep or wash materials out the back door.

DUMPSTER AND RECYCLING AREA

Must be covered at all times. Do not allow bin to overflow. Dumpsters and trash cans need to be inspected for leaks and be replaced immediately if leaks are found. Contact your service provider if your dumpster does not have lids or it leaks.

SPILL RESPONSE KIT

Keep a spill kit handy to clean up spills.

SANITARY SEWER

Wash and rinse equipment and containers in a mop sink or location where wash waters drain to the sanitary sewer.

