



BURLINGAME
ENEWS

April 7, 2022

This eNews contains informative graphics, pictures, and flyers. To get the most out of this weekly eNews, we recommend that you download all images prior to viewing.

CalMod

Caltrain

CALTRAIN ELECTRIFICATION



PARALLELING STATION CONSTRUCTION NOTICE

Caltrain is beginning construction of the first main gantry structure at the Paralleling Station facility currently under construction in Burlingame. Gantries are H-frame steel structures that support wires perpendicular to the tracks. These wires connect to the overhead contact system and provide power to the trains. The main gantry will be housed within the footprint of the facility near the transformers. The other gantry will be located on the opposite side of the tracks from the facility. A sample photo of a main gantry is located on the reverse side.

The Paralleling Station is an unmanned facility that will regulate electrical power to the electric trains. In addition to the gantries, the Paralleling Station will consist of:

- One transformer- The transformer will take in and convert power to ensure it is consistently sent out throughout the system.
- Control House - Located within the facility footprint, housing the controls for the system.

CONSTRUCTION ACTIVITIES

In addition to delivery of and installation of gantries via a crane, construction activities during this time will include excavation, laying of a concrete pad, control house construction, transformer delivery. Crews will utilize excavation equipment, and dump trucks for removal and delivery of materials.

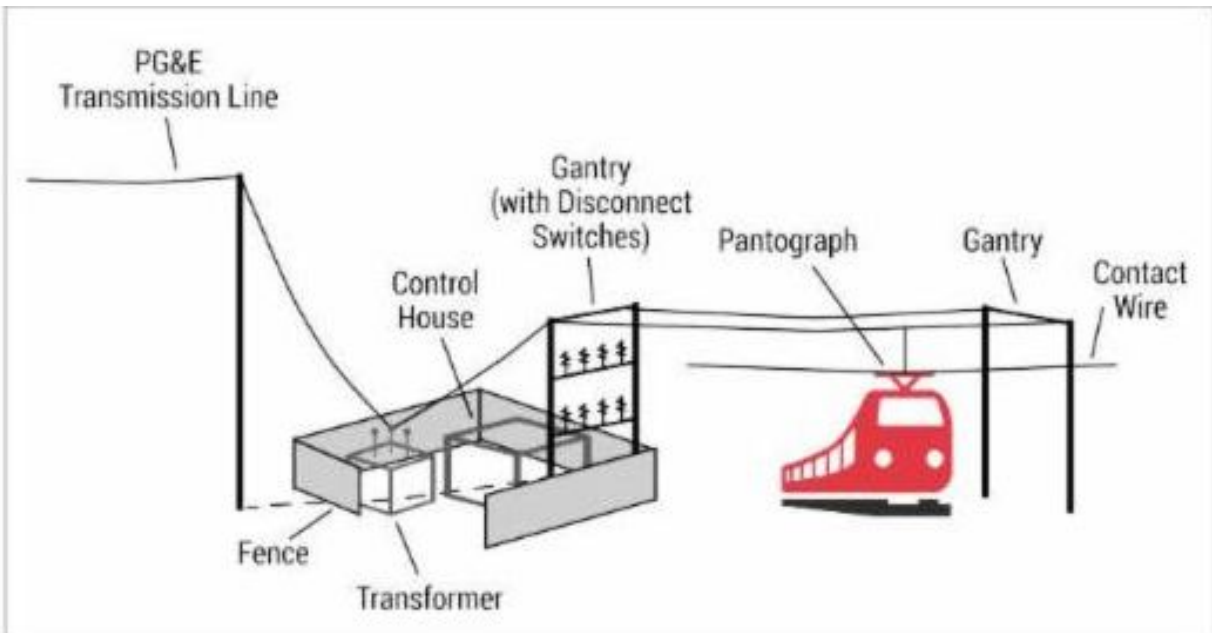
A majority of the work will take place during the weekday between 6 a.m. and 3 p.m. There may be night and weekend work required when work is being completed within the railroad track envelope.



Above: Burlingame Paralleling Station Layout

Left: Sample Main Gantry

Below: Construction Layout

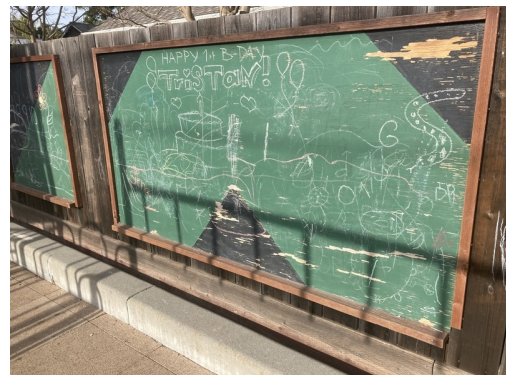


New Chalkboards Coming to Paloma Park

The Burlingame Parks and Recreation Foundation has procured and will install replacement outdoor chalkboards for Paloma Park!

To accommodate this work, the Park will be closed from 7 a.m. to 4 p.m. on Monday, April 11

Please consider visiting the Pershing Park Playground at 138 Crescent Ave. We apologize for any inconvenience.



April is Earth Month!

Earth Day on April 22nd is a great reminder to take everyday actions to protect the environment and conserve natural resources. The easiest way to do so is to reduce our impact by burning fewer fossil fuels, polluting less by avoiding plastic, minimizing our trash by composting and recycling, and being efficient with our water and energy use.

See our list of everyday actions to take [here](#).

You are invited to participate in these Earth Month activities:

- RethinkWaste [Trash to Art Contest](#), due April 8
- Rotary [Environmental Day at Coyote Point](#), April 9
- Landscape Class on how to [Create a Low Maintenance Yard](#), April 27
- [Photo Scavenger Hunt](#) for a chance to win an Earth Day Goody Bag, ends April 30
- Enter artwork into Burlingame's [Storm Drain Mural Art Contest](#), due April 30
- [Earth Month Bingo for Teens](#) at the Main Library, ends April 30
- [Kids Go Green Scavenger Hunt](#) at the Main Library, ends April 30

Also, check us out on Instagram [@burlingame_sustainability](#) for tips and resources all year.

**Recycle.
Compost.
Go Electric.
Save Water.
Say No To Plastic.**

take action.
THE FUTURE IS IN OUR HANDS.



[@burlingame_sustainability](#)

Sign up for the "Burlingame Gazette" and get the most current information on senior events, programs, and resources. Click on this "button" to send an email to nhoughton@burlingame.org, or call the Burlingame Recreation Center at 650-558-7300 to get the "Gazette" mailed to your home or delivered to your email inbox.

Burlingame is proud of our employees. If you think so too, we'd love to hear from you! Click here to send an email to EmployeeRecognition@burlingame.org if an individual or department has gone above and beyond for you!

Events Around Town



New Hours

THE MAIN LIBRARY

STARTING MONDAY, APRIL 4TH

MONDAY - THURSDAY 10 AM - 8 PM

FRIDAY 10 AM - 6 PM

SATURDAY 10 AM - 5 PM

SUNDAY 1 PM - 5 PM

New Library Hours

If you are unable to get to the Burlingame Public Library, even for a short period of time, the Library has a great service for you. The Library can deliver items to your door and pick up any items that you have finished using. This program is open to long-term homebound individuals and to people who are dealing with a short-term challenge such as an illness or an injury. Please contact David Whitman, Volunteer Coordinator, at (650) 558-7417 to sign up and take advantage of this great service.

Burlingame Public Library

VIRTUAL CAREER EVENT

for
Adults

Mobile App Design

Workshop



Saturday
April 9th, 2022
1:00-3:00 PM



Registration Required
Space is limited

Registration Required!

Sign up on our events page to
receive Zoom link.
[www.burlingame.org/
library/events](http://www.burlingame.org/library/events)



Mobile App Design Workshop

Learn about bringing your app or website idea to life in this workshop by joining our virtual Zoom event. Registration is required to receive log in information. Space is Limited. To register, click [here](#).

Connect with Diginido Labs [here](#).

LEADER IN TRAINING Workshops



The Burlingame Parks and Recreation Department is excited to offer teens 3 interactive workshops this Spring. Interview preparation for teens can be pretty intimidating and nerve-wracking, especially if it's your first time, but it doesn't have to be! Our staff will provide tips and tricks to help your teen prepare for their next interview. Whether it's a scholarship, volunteer opportunity or first job - we are excited to help prepare them.

Ages 12-18 | \$20R/\$22NR | Recreation Center | #P2299930

Preparing for the Interview

Thursday, April 7
7:00-8:15pm

Interview Round Table

Thursday, April 14

First Time LITs
6:00-6:45pm

LITs Looking to be Staff
7:00-7:45pm

Express Yourself

Thursday, May 12
7:00-8:15pm

Contact Nicole for more information: nhoughton@burlingame.org

Leader in Training (L.I.T.) - Applications Available Now

Application deadline - Friday, April 15, 5 p.m.

The Burlingame Parks and Recreation Department looks forward to another summer of fun, and we hope teens 7th-12th grade will join us! This year, L.I.T.'s will volunteer from 10 a.m. to 2 p.m. Parts of the week may include time volunteering in: Adventure Camp, Senior programs, Parks, and Lunch Adventures. Teens will also participate in team building exercises. A schedule with program information will be sent to the participants prior to their assigned week. All hours volunteered count towards community service. The L.I.T. program helps teens develop leadership skills, and gives participants hands-on work experience.

All applicants need to complete the application and will participate in an interview process. To apply, teens must complete the L.I.T. application for Summer 2022. The application can be found [here](#).

Burlingame Parks & Recreation Presents



New Active Adult Book Club

Join us for the inaugural meeting!

Thursday, April 21st, 2pm-3:30pm

Recreation Center

Book Club Discussion:

“Apples Never Fall” by Liane Moriarty



Please RSVP to Nicole H. at 650-558-7308



CALLING ALL ARTISTS

STORM DRAIN MURALS CONTEST



Submit your design for a chance to have your artwork printed on a mural displayed in Burlingame.

ENTER BY APRIL 30, 2022 AT WWW.BURLINGAME.ORG/MURALS

Storm Drain Murals Contest

Submissions Due April 30, 2022

Calling all artists! The City of Burlingame is launching a new Storm Drain Murals Pilot Project and is seeking digital artwork for these murals. Since storm drains often go unnoticed, the murals provide a unique learning opportunity to educate the public about the importance of preventing litter, pet waste, and other pollutants from entering these drains. Submit your designs in the Storm Drain Murals contest for a chance to have your artwork displayed in Burlingame. To learn more about this contest, visit www.burlingame.org/murals.

The Fresh Market!

Sundays, 9 a.m. - 1 p.m.

Park Road at Burlingame Avenue

Please continue to follow these important tips for shopping the Fresh Market:

- **Leave your pets at home, please.** By order of the San Mateo County Health Department, **no dogs are allowed** in Burlingame's Fresh Market.
- Come to the market in good health; please stay home if unwell.
- Wash hands/ refrain from touching your face.
- Wash all produce before consumption.



For more information, visit burlingamechamber.org.

Community Updates (events not sponsored by the City of Burlingame)

Overnight Closure of Southbound U.S. 101 (from South Airport Boulevard to San Bruno Avenue)

Sunday, April 10, 1 a.m. to 6 a.m.

As part of the San Mateo 101 Express Lanes Project, Caltrans is replacing overhead sign structures (that span the width of one side of the freeway, from the shoulder to the median) on U.S. 101. This work requires large flatbed trucks to deliver the sign structures and cranes to hoist them into place from the center of the freeway. Therefore, it will be necessary to close one direction of the freeway at a time for up to five hours.

Existing sign structures are being replaced by wider structures that can accommodate the new Express Lanes throughout the corridor.

Motorists will be directed to exit the freeway in advance of the closed sections, and detour signs will be in place to clearly guide them through city streets until they are able to get back on the freeway. Detour routes have been carefully selected with input from local jurisdictions in an effort to minimize impacts to nearby residents. The detour map below provides the exact detour route.



CEC Student Film Fest Winners Announced

Siddharth Chibber, an eighth grader at Burlingame Intermediate School, captured first place in the

Middle School Division and the Best in Festival award for his film **"Boxed Like a Fish"** at the **5th Annual CEC Student Film Fest**, which was held live at Burlingame High School on March 22. The film fest was a co-production of the Citizens Environmental Council and the Burlingame High School Environmental Club.

Shoan Deb, a fourth grader from Washington Elementary in Burlingame, won the Best Elementary division for **"Go Save the World."** **Lian Wang**, a ninth grader at San Mateo High School, took first place in the High School division for her film **"How Consumerism Drives Climate Change."**

With financial support from **Peninsula Clean Energy**, CEC awarded cash prizes of \$150 to the elementary school winner, \$150 to the middle school winner, \$150 to the high school winner, and \$150 for the "Best in Festival" winner. San Mateo County Supervisor **Dave Pine**, who was a guest speaker at the event, said that he never failed to learn something new from the student films.



CALIFORNIA MICROBUSINESS COVID-19 RELIEF GRANT:
SAN MATEO COUNTY



\$2500 Grant for Micro- Businesses

If your business has revenues (sales) under
\$50,000 and you were hurt by the pandemic,
you may qualify for funding!

**FOR-PROFIT AND NON-PROFIT
BUSINESSES QUALIFY**

Please fill out the eligibility form
to determine if you qualify.
tinyurl.com/smccovidgrant



Questions?
English Hotline: 650-321-2193 x 1103
smcgrantapplication@rencenter.org

Funded in part through a Grant from the California Office of the Small Business Advocate.

California Microbusiness COVID-19 Relief Grant

Deadline is Monday, April 11

The California Office of the Small Business Advocate has released new grant funding to benefit microbusinesses in San Mateo County. The first-round deadline to apply is Monday, April 11, 2022.

To receive this grant, you must:

1. Have a business located in San Mateo County
 2. The business must have started before December 31, 2019
 3. The business must have been the main source of the business owner's income in 2019
 4. The business must be legally operating (i.e. paying sales tax, registered with the state as appropriate)
 5. The business must have fewer than five employees (in 2019, 2020 and now)
 6. Have gross revenues (sales) under \$50,000 in 2019 taxable year
 7. Demonstrate at least a 10% decrease in revenues from 2019 to 2020.
 8. Not have received the California Small Business COVID-19 Relief Grant. If you received PPP, EIDL or any county grant, you are still eligible, if you meet the other criteria.
-

Burlingame Lions Club Easter Egg Hunt and Pancake Breakfast



**Join the Burlingame Lions Club
for their annual Easter Egg Hunt
and Pancake Breakfast.**

Saturday April 16, 2022 8:00-11:00

Washington Park, Burlingame

Pancake breakfast starts at 8:00, \$10 for adults, \$8 for children
10 and under.

Easter egg hunt will start with all children 2 and under at 9:00

For more information please contact the Burlingame Lions Club
at BurlingameLionsClub@gmail.com

Burlingame
Lions Club



Easter Egg Hunt



First run at 9:00am
sharp.

Pancake
Breakfast



8:00
Adults \$10
Children under 10
\$8

Applications for Environmental Scholarships Sunday, April 17 - Applications Due

The Citizens Environmental Council is offering Environmental Scholarships to Burlingame High School seniors who are interested in environmental and sustainability issues. CEC has awarded grants to 15 students since 2016.



Applicants must be seniors at Burlingame High who are planning to attend college. They should have taken AP Environmental Science and/or be planning to major in environmental science or a related field, and/or have volunteer experience with

environmental groups or projects.

The application form and requirements may be found [here](#).

Sustainable San Mateo County Announces 2022 Award Recipients

Wednesday, May 11, 6 p.m. - 7 p.m.

Sustainable San Mateo County (SSMC) will honor four local sustainability champions at its 23rd Annual Awards Celebration on Wednesday, May 11, for their contributions to sustainability in San Mateo County. They are:

- Each Green Corner
- Kalimah Salahuddin
- Seamless Bay Area
- Robert Whitehair

SSMC and the American Institute of Architects, San Mateo County Chapter, will present the Green Building Award to the Marshall Medical Offices on Kaiser Permanente's Redwood City campus. The All-Electric Leadership Awards, sponsored by [Peninsula Clean Energy](#), will recognize builders, property owners, and design teams on the forefront of building electrification in San Mateo County.

State Senator Josh Becker will emcee the evening program on May 11 with former Menlo Park Mayor Kirsten Keith. It will take place on Zoom from 6 p.m. to 7 p.m. Sponsorships are available; visit <https://sustainablesanmateo.org/sponsorship-opportunities> for details.

SSMC's Third Annual Virtual Auction will kick off on Wednesday, May 4, and conclude on May 15. Proceeds will benefit SSMC, a 501(c)(3) nonprofit dedicated to accelerating sustainability in San Mateo County.

Admission to the Awards Celebration is free, but pre-registration is required at https://bit.ly/SSMC_Awards_2022.



curative



COVID-19 Testing

Self-collected, shallow nasal PCR test

Results within 1-2 days upon receipt of the sample at the lab

No cost to insured or uninsured. If insured, please have your information ready.



Burlingame Intermediate School
1715 Quesada Way
Burlingame, CA 94010



Mondays
1:00PM - 7:00PM

visit cur.tv/burlingame
or call 888.702.9042
to schedule an appointment



BECOME A CAREGIVER

San Mateo County Public Authority is currently recruiting caregivers to join the In-Home Supportive Services (IHSS) Registry

- Excellent opportunity to earn extra money
- Whether you are a student in a medical field, a retired adult, want a change in career or just like helping people, you can earn money while helping those in need of assistance to remain in their homes safely and with dignity.
- Work part time or full time, YOU decide!
- Call us now and join our Registry!
- The hourly pay rate is \$17.70 Overtime pay for hours worked over 40 hours per week is \$26.55.

Website:

<https://www.smchealth.org/post/ihss-provider-registry>
CALL US TODAY

We are seeking compassionate and dedicated caregivers for our IHSS Recipients

Medical, Dental and Vision Insurance available at low cost, if eligible

Optional Retirement program for all IHSS providers

Public Transportation Reimbursement

Job Development Training

No Experience Required

Flexible Schedules

All languages welcome

Experience and skills obtained look great on your resume

SAN MATEO COUNTY PUBLIC AUTHORITY

225 37th Ave San Mateo, CA 94403

Maria Esparza-Diaz
650-713-8461
mesparza-diaz@smcgov.org

Bilingual Staff: Spanish and Chinese

Shop Burlingame - your tax dollars support City services!
A message from the Burlingame/SFO Chamber of Commerce



City of Burlingame | 650-558-7200 | info@burlingame.org



