



**August 18, 2022**

This eNews contains informative graphics, pictures, and flyers. To get the most out of this weekly eNews, we recommend that you download all images prior to viewing.

## The Future of Parklets in Burlingame

At the September 19, 2022 City Council meeting, Councilmembers will consider the future of the temporary parklet program. To ensure your thoughts on this important topic are captured, please click [here](#) to take a short survey



## Congrats to the Storm Drain Art Contest Winners

You may have noticed some new artwork on sidewalks around town, courtesy of the City's [Storm Drain Murals Pilot Project](#). The artwork represents the winning designs from a contest the City hosted several months ago. .

Storm drains are the gates to local creeks and the San Francisco Bay. Since these drains often go unnoticed, the City wanted to bring attention to the storm drains and the importance of keeping streets and waterways clean. There are 14 murals installed across town. Find them all by visiting the locations specified in [this map](#).

Help the City improve stormwater programs by taking a stormwater survey [here](#). A huge thank you to everyone who entered the art contest!

## "I Voted" Sticker Contest

The City, in partnership with Generation Voter, is hosting its first "I Voted" sticker contest! Generation Voter is a youth-led initiative, overseen by the City Clerk's Office, to increase voter registration and voter participation of residents under 25 years old.

The "I Voted" sticker contest is open to Burlingame residents that are 18 years old and under. The City will select three designs to turn into stickers that will be used for the November election. The stickers will be available at all Voting Centers in the city and at City Hall.



To find out more about the contest and to download the submission sheet, go to [www.burlingame.org/GenerationVoter](http://www.burlingame.org/GenerationVoter) and select "Get Involved".

Designs must be received by September 8 (the City extended the deadline) and can be submitted in any of the following ways:

1. Email: [mhasselshearer@burlingame.org](mailto:mhasselshearer@burlingame.org)
2. Drop off: City Clerk's Office in City Hall, 501 Primrose Road, Burlingame
3. Mail:

Meaghan Hassel-Shearer  
501 Primrose Road  
Burlingame, CA 94010

The City can't wait to see all of the submissions, and wants to show off a few of the designs that have already been received!

---

## Parks & Recreation Fall Registration Now Open

The Parks and Recreation Department is excited to present the fall line-up of classes, leagues, and events for the community – many of which are at the new Community Center! The fall edition of *LivePlay Burlingame* should arrive at your Burlingame home in the coming days and can also be found [here](#). Take a peek inside to find the full listing of classes, events, information from various City departments, articles, a recipe, a crossword puzzle, and more! Don't miss your chance to sign up for elementary and middle school sports leagues, fitness classes, afterschool enrichment, the Muddy Mile, new senior drop-in programs, and MORE! Click [here](#) to register.



---

## Teen Mentors in Grades 9 - 12 Needed

High School students with a 3.5+ GPA are invited to fill out applications to be Teen Mentors at the Burlingame Public Library Homework Center! Teen Mentors will help



students in Grades K-8 with their homework after school on Mondays, Tuesdays, and Wednesdays from 4:00 to 6:00 p.m. this fall. Applications can be found [here](#) and must be submitted to Teen Librarian Jenny Miner ([miner@plsinfo.org](mailto:miner@plsinfo.org)) by Friday, August 26.

*\*There is a mandatory training for all Teen Mentors on Wednesday, September 7 at 4:00 p.m. in the Lane Community Room \**

**Recycle.  
Compost.  
Go Electric.  
Save Water.  
Say No To Plastic.**

# take action.

THE FUTURE IS IN OUR HANDS.



@burlingame\_sustainability

Sign up for the "Burlingame Gazette" and get the most current information on senior events, programs, and resources. Click on this "button" to send an email to [cvega@burlingame.org](mailto:cvega@burlingame.org), or call the Burlingame Recreation Center at 650-558-7300 to get the "Gazette" mailed to your home or delivered to your email inbox.

Burlingame is proud of our employees. If you think so too, we'd love to hear from you! Click here to send an email to [EmployeeRecognition@burlingame.org](mailto:EmployeeRecognition@burlingame.org) if an individual or department has gone above and beyond for you!

## library

FACEBOOK - @480PRIMROSE  
TWITTER - @480PRIMROSE  
INSTAGRAM - @BURLINGAME\_LIBRARY  
YOUTUBE - BURLINGAME PUBLIC LIBRARY

## city hall

FACEBOOK - @BURLINGAMECITYHALL  
TWITTER - @BURLINGAMECITY  
INSTAGRAM - @GENERATIONVOTER  
@BURLINGAME\_SUSTAINABILITY

## public safety

FACEBOOK - @BURLINGAMEPOLICE  
TWITTER - @BURLINGAMEPD  
@CENTRALCOUNTYFD  
INSTAGRAM - @CENTRALCOUNTY.FIRE

## parks and rec

FACEBOOK -  
@BURLINGAMEPARKSANDREC  
INSTAGRAM -  
@BURLINGAME\_PARKSANDREC

## Events Around Town

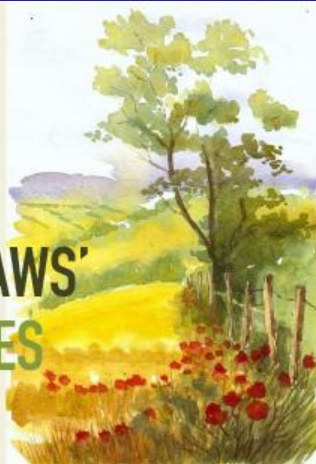
Burlingame Public Library

**IN-PERSON AUTHOR DISCUSSION**



**EXPLORE  
JOHN MUIR LAWS'  
FAVORITE HIKES**

This program is funded by the Burlingame Library Foundation.



**Wednesday  
August 24<sup>th</sup>, 2022  
6:00 PM  
Lane Room**

FOR  
ADULTS

**Registration Required!**

Please sign up on  
<https://burlingame.libcal.com/event/9235173>



## Explore John Muir Laws' Favorite Hikes

**Wednesday, August 24, 6:00 p.m., Burlingame Public Library, Lane Room**

Artist, author, and naturalist John Muir Laws is well known for his nature drawings. He

discusses some of his favorite places in the Bay Area to see wildlife and why journaling enhances how you experience the natural world. Find more about the Nature Journal Club [here](#).

To register here, click [here](#).



**JAZZLibrary**  
at the  
Live Musical Performance

## SPEAKER SERIES IS BACK!

### The Library Foundation Speaker Series is Back!

**Sunday, September 11, starting at 5:00 p.m.**

The Burlingame Library Foundation is excited to announce the return of the popular **Burlingame Library Foundation Speaker Series**! The fall season will feature **two incredible events** sure to educate, inspire, and make you laugh until your sides hurt.

The events will take place in the beautiful Reading Room in the Main Library at 480 Primrose Road. First in the lineup will be ***Hello Louis!*, a celebration of the life and music of Louis Armstrong on September 11, 2022, at 5:00 PM.** In collaboration with Jazz at the Ballroom, this event includes a concert and conversation featuring Ricky Riccardi - author, lecturer and Grammy-winning Director of Research Collections for the Louis Armstrong House Museum. He will be joined by two outstanding musicians: trumpeter Alphonso Horne and pianist Mathis Picard.

These events typically sell out. Want to ensure that you get your tickets AND show the Library Foundation a little extra love? **Early Access starts NOW for the Louis Armstrong event. Tickets are \$100 each and can be purchased at [www.burlingamelibraryfoundation.org](http://www.burlingamelibraryfoundation.org).** Regular Access starts August 22 at 10:00 AM; tickets are \$75 each.

**On November 6, 2022, at 5:00 PM, members of the San Francisco cast of *Mortified* will visit the Library** to share the most mortifying and entertaining stories found in their childhood diaries, letters, poems, and more. Trust us! They're hilarious!!

The Library Foundation looks forward to hosting you once again at these exciting fall events. All support generated from the Speaker Series enables the Library Foundation to provide critical funding for programming, technology, and collections enhancement at the Burlingame Public Library. **Special thanks to incredible sponsors Raziel Ungar/Burlingame Properties and the Martin Family/Studio Shop Gallery**

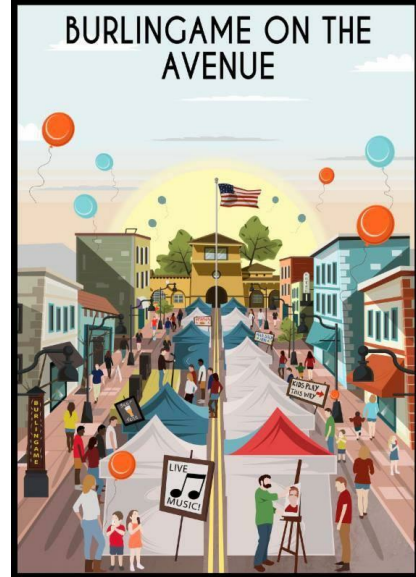
### Burlingame On the Avenue

**August 20-21, 10:00 a.m. - 6:00 p.m.**

The Peninsula's favorite summer arts and entertainment festival returns to Burlingame Avenue **this weekend!** Hosted by the Burlingame/SFO Chamber of Commerce, this event is **FREE** to the community and will draw thousands of people over the two-day extravaganza.

Burlingame On the Avenue features 100+ talented artisans who display unique products. Find one-of-a-kind items for yourself or distinctive gifts for family and friends.

Burlingame On the Avenue is proud to host two entertainment stages boasting a diverse mix of musical and dance performances. Bands on both of the stages play music that appeals to all genres and generations. The main stage includes wonderful entertainment, such as students from School of Rock in San Mateo; cosmic mountain soul music from Wolf Jett; and old school R&B, Latin jazz, and funk from Patron Latin Rhythms. The community stage will have fabulous acts from local performers and active breaks with local fitness centers to get your bodies moving and grooving!



This year's festival offers a variety of food trucks for your dining pleasure. Alternatively, please your taste buds at one of the many wonderful restaurants and eateries along Burlingame Avenue and its side streets.

---

## The Planning Commission Wants Your Feedback

**August 22, 2022, 7:00 p.m.**

The City of Burlingame will hold an environmental scoping meeting on August 22, 2022, at 7:00 p.m. (virtual meeting) to solicit input from the public and government agencies on specific topics they believe should be addressed in the Environmental Impact Report (EIR) for the redevelopment of a 12-acre site at 1200-1340 Bayshore Highway. As it is currently proposed, this project includes a multi-lot assembly for the construction of three 11-story office/life science buildings totaling 1.46 million square feet. The project also includes two 10-story parking structures, each with two levels of below-grade parking. For more information regarding the project, visit the [project page](#). The scoping process is designed to enable the City to determine the scope and content of the EIR and identify potentially significant environmental effects and alternatives to be analyzed in the EIR. The Scoping Meeting login information can be found on the [Planning Commission Meetings page](#).

---

## Building Division Closed August 26 & 29

The Building Division is in the process of upgrading its permit tracking system with a new, state-of-the-art system. To implement the upgrade, the current system will need to go offline on Friday, August 26. The new system will then be brought online starting August 26, but will not be operational while it is configured. As the permit tracking system is central to the function of the Building Division, the Building Division will be closed Friday, August 26 and Monday, August 29 while the new system is brought online. If you have business with the Building Division, the City suggests that you visit prior to the end of the day on Thursday, August 25. The City regrets the inconvenience but anticipates that the new system will offer many new benefits that will be useful to the community.

---



2022  
Summer  
Learning  
Challenge

## Summer Learning Challenge

Logs Due by August 31

There is still time to participate in the Summer Learning Challenge! Children and teens need to turn in their logs by August 31 to receive end-of-summer prizes and for a chance to win a \$1,000 scholarship.

For more information: [www.burlingame.org/summerlearning](http://www.burlingame.org/summerlearning)

## The Fresh Market!

Special Location for Sunday, August 21 - Chapin Avenue

Sundays, 9:00 a.m. - 1:00 p.m.  
Thursdays, 3:00 p.m. - 7:00 p.m.  
Park Road at Burlingame Avenue



Please continue to follow these important tips for shopping the Fresh Market:

- **Leave your pets at home, please.** By order of the San Mateo County Health Department, **no dogs are allowed** in Burlingame's Fresh Market.
- Come to the market in good health; please stay home if unwell.
- Wash hands/ refrain from touching your face.
- Wash all produce before consumption.

For more information, visit [burlingamechamber.org](http://burlingamechamber.org).

## Community Updates (events/info. not sponsored by the City of Burlingame)

### Family Fun on the Nature Trail

The Citizens Environmental Council (CEC) invites you to a family-friendly nature walk along San Francisco Bay on Saturday, August 20, from 11 a.m. to noon. We'll be picking up trash (plogging) as we go, so please bring gloves and a bucket if possible. CEC will provide free trash pick-up kits, including grabbers and gloves for kids. This event is free, but advance registration is requested. To register, click [here](#).



Make new friends who care about the environment, take in a gorgeous view of the Bay and get some fresh air and exercise, all while cleaning up for the community. The hike will start at Bayfront Park, which is located at Old Bayshore Highway and Millbrae Avenue, across the street from the Westin.

For more information, contact [info@cecburlingame.org](mailto:info@cecburlingame.org).

## Students Invited to Apply for Youth Climate Ambassadors Leadership Program

**Application deadline - Monday, September 5**

Applications are now open for a yearlong leadership program for San Mateo County high school students interested in learning about climate change and motivated to take action within their schools and communities.

The [Youth Climate Ambassadors \(YCA\) Program](#) is offered by the San Mateo County Office of Sustainability, in partnership with the Citizens Environmental Council of Burlingame, which piloted the project in 2018; the San Mateo County Office of Education; and Peninsula Clean Energy. Students in grades 9 through 12 are eligible.



The program will run from October 2022 through May 2023, with two Thursday meetings per month on Zoom and three in-person retreats on Saturdays. Students will build their knowledge of climate change, explore various climate solutions, and develop final projects to create positive environmental changes in their schools or local communities. The schedule and online application are available [here](#). **The deadline for applications is Monday, September 5.**

The Youth Climate Ambassadors will receive a stipend of up to \$500, and additional funds will be available for students living in households with limited financial resources. Students who are part of the program can also apply for funding of up to \$500 for their final projects.

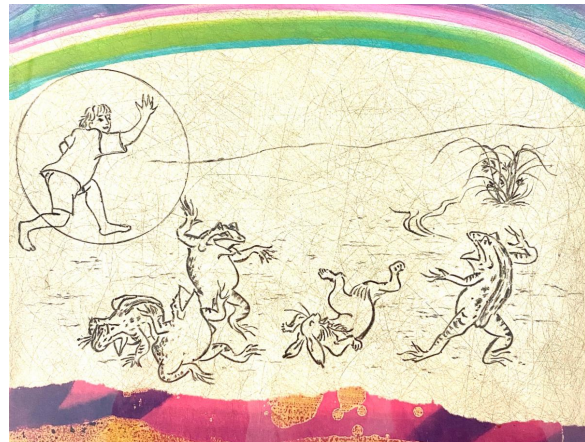
Further information is available [here](#). For more information, email Kamille Lang at [klang1@smcgov.org](mailto:klang1@smcgov.org).

## Iku Nagai: Personal Mythology

**Now through October 30th - Peninsula Museum of Art**

A series paying homage to Chōjū-giga style animal caricatures is a focus of the exhibition created by the late Japanese-American and Bay Area artist, Ikuku (Iku) Nagai. Her stylized drawings, chiefly of rabbits and frogs acting as humans, tell both humorous and serious stories of heroes, villains, and those in between. The original scrolls or Chōjū-giga, short for Chōjū-jinbutsu-giga (literally

"Caricatures of Animals and Humans") were created by the artist-monk known as Toba Sojo and belong to Kōzan-ji temple in Kyoto, Japan. They date from the mid-12th to mid-13th centuries and are a Japanese national treasure. The free and cheerful style of drawing evident in the scrolls is considered to be the origin of manga, modern comics, and animation.





Additional prints are from Nagai's Anecdote Series, speaking to social and psychological issues and inspiring belief in the power and continuity of nature. The artist uses animals, birds, and mountains to convey messages of social upheaval and hope, overlaying them with rainbow-colored concentric circles and other ancient symbols.

Although most of the artwork in this show are prints, nearly all are unique, not created in editions. The drawings have the appearance of pen-and-ink, but they are actually drawn with very fine brushes.

Nagai also experimented with her own style of European cubism, seen in two paintings in this show.

The artist used multiple techniques to produce her art: gold and silver leaf, watercolor, etching, drawing, monotype, woodblock, monoprint, chine colle, and painting in mineral pigments she ground herself.

Iku Nagai was born in Kyoto, Japan, and trained in traditional Japanese painting. She met her Japanese-American husband Masaaki in Japan. They married and then moved to the United States, settling in San Mateo in 1975. Here in the Bay Area, Nagai was exposed to European and American modern art, earning both her BFA and MFA at San Jose State.

In her work, Nagai creates a synthesis of historic Japanese aesthetics and contemporary genres. A 1999 retrospective exhibition at the Triton Museum celebrated her life in art.



# REPORT DEAD BIRDS

[westnile.ca.gov](http://westnile.ca.gov) • 1-877-WNV-BIRD (1-877-968-2473)



Dead bird reports are often the first sign that West Nile virus is active in an area.



[www.smcmvcd.org](http://www.smcmvcd.org)

## Report Dead Birds in Your Community

As Santa Clara County continues to detect West Nile virus in birds and mosquitoes, we are reminded of the local risk of this dangerous disease. Reporting dead birds is a critical way for the public to be involved in protecting the health of our communities.

For more information on how to report a dead bird, click [here](#).



## Earthquake Warnings are a Game Changer

The Governor's Office of Emergency Services (Cal OES) encourages residents to have plans for how to protect themselves in the event of an earthquake. If you receive a warning or feel shaking, there are only moments to act. There may be circumstances where a warning is issued, but no shaking occurs. It is always better to be on the side of caution when it comes to earthquakes. Cal OES encourages you to share this information with friends and family in California, to help spread the word about the technology available to help keep them safe.

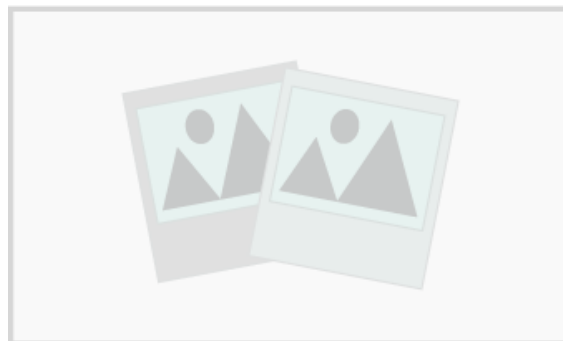
Californians can now get earthquake warnings from [Earthquake Warning California](#). You can get a jump start before shaking can be felt, to take protective actions: DROP, COVER, and HOLD ON (or LOCK, COVER, and HOLD ON if using a wheelchair).

*Shop Burlingame - your tax dollars support City services!*

A message from the Burlingame/SFO Chamber of Commerce



[City of Burlingame](#) | 650-558-7200 | [info@burlingame.org](mailto:info@burlingame.org)



City of Burlingame | 501 Primrose Road, Burlingame, CA 94010

[Unsubscribe smichael@burlingame.org](#)

[Update Profile](#) | [Constant Contact Data Notice](#)

Sent by newsletter22@burlingame.org powered by



Try email marketing for free today!