



BURLINGAME
ENEWS

February 3, 2022

This eNews contains informative graphics, pictures, and flyers. To get the most out of this weekly eNews, we recommend that you download all images prior to viewing.

A Large Delivery for the New Community Center - Update

The generator for the new Community Center will be delivered on Tuesday, February 8, 2022. A crane will be coming with it to put it in place. The expected arrival time to the site is between 6 a.m. and 7 p.m. The construction crew has received approval to start putting the generator in place as early as 7am. To help with traffic control, flaggers will be on Burlingame Avenue to manage the traffic in both directions. The crane will be arriving and departing on Carolan Avenue.

If you have any questions, please contact construction manager George Sanan at (415) 858-8582.



Water Utility Statement Update

Changes to your Account Number

If you make payments via online banking through your financial institution, make sure to update your account number (with your bank) so your payments are applied to the correct account!

Auto Payment

If you are signed up for auto payment with The City of Burlingame, you are all set. There are no changes!



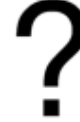
Payment Through your Bank

Please update your account number to the new format!



Questions

Please email your questions to waterdept@burlingame.org



TWO MONTH UTILITY STATEMENT
CUSTOMER COPY

Please keep this portion for your records.

CUSTOMER NAME	ACCOUNT #	WINTER AVG CONS	SERVICE LOCATION
CITY OF BURLINGAME	30-123456-1123456	47	501 PRIMROSE RD
BILL NUMBER	BILL DATE	ACCOUNT TYPE	DUE DATE
1000122	11/30/2021	SINGLE	12/30/2021
DESCRIPTION	METER NUMBER	PREVIOUS RECD DATE	CURRENT RECD DATE
WATER - FIXED CHARGE	1" METER	09/27/2021	11/29/2021
TIER 1	SINGLE	2829	2753
TIER 2			
TIER 3			
SEWER (PLAT)		09/27/2021	11/29/2021
SEWER			

Your Utility Statement has Changed!

Your Account Number

If you pay your bill by logging into your bank account, please update your account number to the new format!

If you are signed up for automatic payment with The City of Burlingame there are no changes that need to be done.

Usage History

The graphic to show your consumption history has been updated to show 2 years of consumption history. Remember it is always best to compare your use to the same time periods.

TWO MONTH UTILITY STATEMENT
CUSTOMER COPY

Please keep this portion for your records.

CUSTOMER NAME	ACCOUNT #	WINTER AVG CONS	SERVICE LOCATION
CITY OF BURLINGAME	30-123456-1123456	47	501 PRIMROSE RD
BILL NUMBER	BILL DATE	ACCOUNT TYPE	DUE DATE
1000122	11/30/2021	SINGLE	12/30/2021
DESCRIPTION	METER NUMBER	PREVIOUS RECD DATE	CURRENT RECD DATE
WATER - FIXED CHARGE	1" METER	09/27/2021	11/29/2021
TIER 1	SINGLE	2829	2753
TIER 2			
TIER 3			
SEWER (PLAT)		09/27/2021	11/29/2021
SEWER			

CONSUMPTION HISTORY (100 GAL)

TWO MONTH UTILITY STATEMENT
REMIT PORTION

Please write your Account Number on your check and enclose this portion of the bill with your payment.

SERVICE LOCATION	BILL NUMBER	ACCOUNT #	DUE DATE	TOTAL DUE
501 PRIMROSE RD	1000122	30-123456-1123456	12/30/2021	\$432.24

Make Checks Payable To:
CITY OF BURLINGAME
PO BOX 191
BURLINGAME, CA 94011-0191

Residential Sewer Charges

Sewer for single family residential properties is based on up to a 3 year average which is recalculated every January 1st. Your average can be found at the top of your bill.

More information about sewer charges can be found at www.burlingame.org.

Your Charges

You will find a breakdown of your current charges toward the top of your bill. All or some of the City of Burlingame charges for water, sewer and waste water may be reflected on the bill. If your account is for a single family residential property, the tiered water rates and sewer average charges will be found in this section. To view current rates, please visit www.burlingame.org

Recology Service Alert

As the Omicron variant continues to surge in California, Recology is experiencing a heavy impact on its workforce. With fewer drivers available, full route coverage has become difficult to maintain, even with extended workdays and additional Saturday routes.

Recology is advising customers to please leave their containers out until they are picked up. Recology apologizes for any inconveniences experienced by residents and businesses. Customers may contact the customer service department at RSMC_Notifications@recology.com or here with questions.

Reminder to Conserve Water

Despite the rains in December, the Bay Area remains in a drought due to three years of less than average rainfall, including a dry January. The region is headed into a dry period with sunshine and unseasonably warm temperatures. Burlingame water customers are asked to remain vigilant, particularly around outdoor water use. For more information, [click here](#).

Some water saving [ideas](#):

- Turn off outdoor water irrigation in the winter.
- Check for toilet leaks (add a few drops of food coloring inside the tank; if after 20 minutes it spreads to the toilet bowl, there's a leak) - toilet leaks are the #1 source of indoor water waste.
- Only run full loads of laundry and dishes.

Peninsula Clean Energy Enters Large Battery Storage Deal

Peninsula Clean Energy (PCE) [announced](#) that it is participating in a large scale battery storage project to support renewable energy across California. PCE is a member of California Community Power (CCP), a Joint Powers Agency comprised of ten community choice programs in the state. Together, members of the CCP succeeded in jointly procuring a large scale deal for 69 megawatts of battery storage in Kern County, California. This new battery storage facility will be key in supporting the state's growing reliance on renewable energy. Great job PCE!

More Parking and EV Stations

Parking in downtown Burlingame is much easier since the opening of the new Highland Parking Garage just south of Howard between Lorton and Highland Avenue. With over 300 parking spots, downtown Burlingame visitors don't need to stress about finding a spot. The new garage also has 24 EV charging stations spread across three floors. Make sure to check out the new garage next time you need to park in downtown Burlingame.

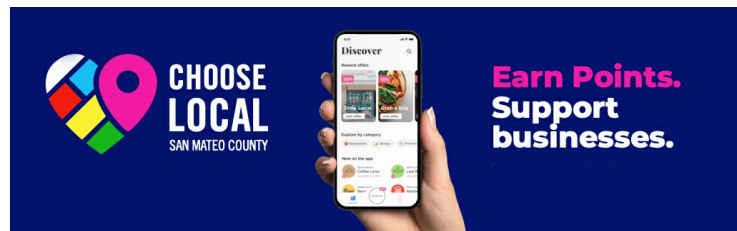


Sign up for the "Burlingame Gazette" and get the most current information on senior events, programs, and resources. Click on this "button" to send an email to nhoughton@burlingame.org, or call the Burlingame Recreation Center at 650-558-7300 to get the "Gazette" mailed to your home or delivered to your email inbox.

Support Small Businesses

To support small businesses in these critical times, the County of San Mateo, alongside City and business

partners, launched [Choose Local San Mateo County](#), a mobile app that enables shoppers to earn rewards automatically at hundreds of participating local businesses, which can be redeemed as cash discounts at select businesses.



Download the app on your smart phone and see the list of participating local stores. Users can earn SMC points through qualifying purchases at local businesses; points can then be redeemed for cash discounts. Each SMC point is worth \$1.00.

Businesses can participate in the program by signing up [here](#).

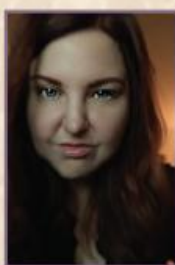
Burlingame is proud of our employees. If you think so too, we'd love to hear from you! Click here to send an email to EmployeeRecognition@burlingame.org if an individual or department has gone above and beyond for you!

Events Around Town

Burlingame Public Library

BURLINGAME AUTHOR

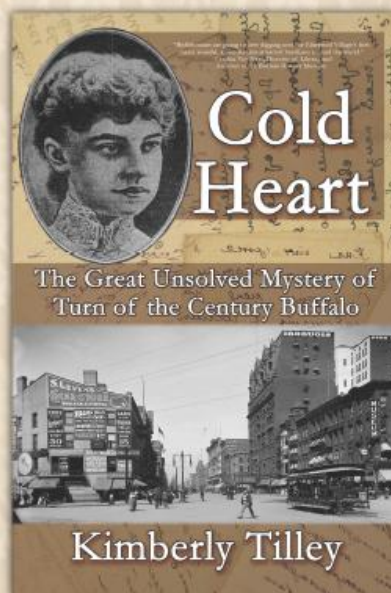
for
Adults



KIMBERLY TILLEY DISCUSSES

"Kimberly Tilley has outdone herself once more with top-notch narrative story-telling. This is a dark and compelling Victorian-era mystery filled with a bevy of entertaining suspects worthy of any Agatha Christie novel. Except, of course, it all really happened!"

– Erik Rivenes, host of the Most Notorious podcast



Tuesday
February 8th, 2022
6:00 PM



Registration Required!

Registration Required!
Sign up on our events
page to receive Zoom link.
[www.burlingame.org/
library/events](http://www.burlingame.org/library/events)



Burlingame Author Talk: Kimberly Tilley

Tuesday February 8, - 6:00 p.m.

Join us on Zoom to hear Burlingame author Kimberly Tilley discusses her historical true-crime book, *Cold Heart*, about tycoon Ed Burdick's murder in 1903 while his family slept upstairs. [Register online here](#).

"Kimberly Tilley has outdone herself once more with top-notch narrative story-telling. This is a dark and compelling Victorian-era mystery filled with a bevy of entertaining suspects worthy of any Agatha Christie novel. Except, of course, it all really happened!" –Erik Rivenes, host of the Most Notorious podcast.

Burlingame Public Library & Easton Branch

for
Children
& Teens

LOVE YOUR LIBRARY

For Children & Teens

**Visit the library in February
during Love Your Library Month
and receive a free book**

February 1 – February 28, 2022

Lunar New Year Art Talk with the Asian Art Museum

Thursday, February 10 - 6:00 p.m.

Please join us for an amazing virtual art talk with the Asian Art Museum to help celebrate Lunar New Year 2022. Learn about the lunar new year traditions and symbolism which enrich this celebration each year. No registration required.

Please Join Us: <https://us02web.zoom.us/j/84052875095?pwd=WXErUmJRUK83OFArWkw5b0M3Qno2Zz09>

Meeting ID: 840 5287 5095

Passcode: 2022

Burlingame Public Library

ASIAN ART MUSEUM ART TALK

for
All Ages

Lunar New Year Art Talk

with the Asian Art Museum

Thursday
February 10th, 2022
6:00 PM



Meeting ID: 840 5287 5095

Passcode: 2022



Burlingame Public Library

Virtual Homework Center



Tuesday, JAN 18-Wednesday, APR 20, 2022*

* Except the weeks of February 21-23 and March 28-30

Every
Monday
Tuesday
Wednesday
4 PM-6 PM

via  **zoom**

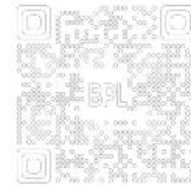
for
Grades
K-8

Registration

Required!

Sign up on our events
page to receive a
Zoom link.

[www.burlingame.org
/library/events](http://www.burlingame.org/library/events)



The Virtual Homework Center is Back!

Via Zoom Monday, Tuesday, and Wednesday from 4 p.m. - 6 p.m.

Tuesday, January 18 - Wednesday, April 20, 2022

Except the weeks of February 21-23 and March 28-30).

We welcome Kindergarteners through 8th graders, who will be paired with a Teen Mentor (with a 3.5+ GPA) for help with reading, writing, science, math, and languages including Spanish, Mandarin, Cantonese, Korean, French, Turkish, and Tamil.

Registration required. Please [register here](#).

Email miner@plsinfo.org if you have any questions.

The Fresh Market!

Sundays, 9:00 a.m. - 1:00 p.m.

Park Road at Burlingame Avenue

Please continue to follow these important tips for shopping the Fresh Market:



- **Leave your pets at home, please.** By order of the San Mateo County Health Department, **no dogs are allowed** in Burlingame's Fresh Market.
- Come to the market in good health; please stay home if unwell.
- Wash hands/ refrain from touching your face.
- Wash all produce before consumption.

Community Updates (events not sponsored by the City of Burlingame)

101 Express Lanes Opening on February 11

The Express Lanes from the San Mateo County/Santa Clara County line to Whipple Avenue in Redwood City will open on February 11th.

The Express Lanes will operate 5 a.m. – 8 p.m., Monday through Friday. The lanes are open to all vehicles during all other times.

The Express Lanes in San Mateo County will connect seamlessly to the new Express Lanes opening in [Santa Clara County](#).



[FasTrak®](#) is required to use the Express Lanes.

To learn more about how to use the Express Lanes in San Mateo County, visit 101expresslanes.org. For more information, you can contact 101express@dot.ca.gov or follow [@CaltransD4](#) on Twitter.

Scout Troup 128 on President's Day

Members of Scout Troup 128 will be raising the American Flags in Downtown Burlingame this President's Day. If you see them, give them some support!



Upcoming Reach Code Policy Events for Building Industry & Community

Reach Code Building Industry Event
February 15, 10 a.m.
Webinar, register [here](#)

Reach Codes Community Event
February, 16, 6:00 p.m.
Webinar, register [here](#)

Learn about why building electrification is important and how new reach code policies may affect your community or business.

Receive an in-depth review of reach codes and goals for 2022 and how it may influence how you build. Topics include:

- Brief review of 2019 reach codes and 2022 California Energy Code
 - Deep dive into draft models for 2022 local reach code policies
 - Substantial time for feedback and brainstorming
-

February Induction Cooking Class Registration

Tuesday, February 15, 6:30 p.m. - Online

Join Acterra for an Induction Cooking Class on Tuesday, February 15th at 6:30 p.m. Chef Kelvin and participants will be cooking a delicious and healthy wrap and salad. The dishes will be a hummus and veggie wrap and a super food salad with Mediterranean dressing... sounds delicious! Register [here](#)

Shop Burlingame - your tax dollars support City services!

A message from the Burlingame/SFO Chamber of Commerce



[City of Burlingame](#) | 650-558-7200 | info@burlingame.org

