



May 5, 2022

This eNews contains informative graphics, pictures, and flyers. To get the most out of this weekly eNews, we recommend that you download all images prior to viewing.

CalMod

Caltrain



Burlingame Crossing Closure Notice

From May 1 through May 20, Caltrain will be performing signal cutover work at 17 grade crossings in Burlingame and San Mateo. On May 7 and May 14, Caltrain will perform grade crossing cutover and installation work in Burlingame that will require the temporary closures of the Bayswater Avenue and North Lane railroad crossings to vehicle and pedestrian traffic. The Morrell Avenue pedestrian crossing will also be closed during construction.

NOTE: Crossing gates will not be activated at all railroad crossings in San Mateo and Burlingame during this time, but flaggers will be present to direct traffic through all other intersections.

Bayswater Avenue, North Lane, and Morrell crossings:

- Saturday, May 7 at 12:01 a.m. to Sunday, May 8 at 8:00 a.m.
- Saturday, May 14 at 12:01 a.m. to Sunday, May 15 at 8:00 a.m.

Bayswater Avenue, North Lane, and Morrell crossings:

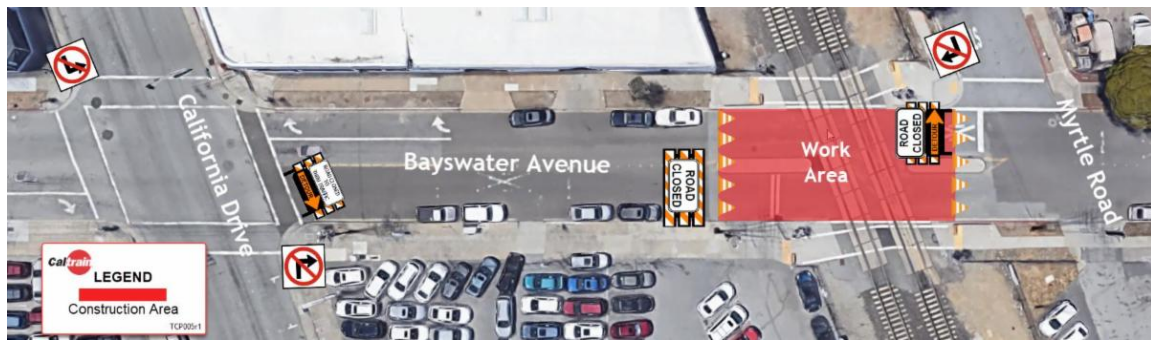
Between May 15 and May 20, testing will occur that COULD result in additional closures. Please watch for traffic signs and flagging staff.

CALTRAIN SERVICE INFORMATION

Temporary service changes in the weekday morning and late afternoon schedules (5:30 a.m. - 9:00 a.m. and 3:30 p.m. - 7:00 p.m.) will be in effect. The work will require a reduction in peak-hour service and suspension of Baby Bullet service. The current 104 weekday trains will be reduced to 88. Weekday midday and evening service as well as weekend service remain unchanged. For more information on service changes, please visit www.caltrain.com/May2022.

Trains are single-tracking through Broadway, Burlingame, San Mateo, Hayward Park, and

Hillsdale stations for three weeks, which affects passenger boarding. Riders using those stations should pay attention to signage and announcements to make sure they are waiting at the correct platform.





Saturday Work at the Community Center

On Saturday, May 7, from 7 a.m. to 5 p.m., trucks will be delivering materials to complete the paving for the new Community Center. The path of travel is along Carolan Avenue to Burlingame Ave. The trucks and transfer pumps will be staged on Burlingame Avenue along the construction site. There will be flaggers for traffic management on site. If you have questions, please contact Construction Manager George Sanan at 650-558-7321.

Third Annual Graduation Celebration!

What began during the pandemic as a way to recognize our students' accomplishments has turned into an annual event!

We would like to help our community celebrate all the accomplishments and future plans of our students graduating from high school and college. So, on May 26, the City's social media will be dedicated to recognizing our graduating students!

To participate, send City Clerk Meaghan Hassel-Shearer (mhasselshearer@burlingame.org) a picture of the graduating student along with some fun facts and what their plans are for next year.



Please share this information with your friends and family in order to ensure that as many

**Recycle.
Compost.
Go Electric.
Save Water.
Say No To Plastic.**

take action.
THE FUTURE IS IN OUR HANDS.



@burlingame_sustainability

Sign up for the "Burlingame Gazette" and get the most current information on senior events, programs, and resources. Click on this "button" to send an email to nhoughton@burlingame.org, or call the Burlingame Recreation Center at 650-558-7300 to get the "Gazette" mailed to your home or delivered to your email inbox.



May is Bike Month

Celebrate Bike Month by riding [wherever](#) – to shops, parks, school, work, or just around town. Some ways to enjoy biking in Burlingame:

- Find the Fix-it station with tools to fine tune your bicycle. There is a Fix-it station by the Burlingame Main Library and at Burlingame Point.
- Utilize one of Burlingame's many bike lanes, including one on Carolan Avenue and one on California Drive
- Ride along the Bay Trail and enjoy beautiful views and [coffee stops](#).
- Try out the electric bikes for rent at participating hotels (Embassy Suites, Marriott SFO, Hyatt, and DoubleTree)

Remember to stay safe. Wear a helmet, ride in bike lanes or on shared roadways, and keep an eye out for cars and pedestrians.

Burlingame is proud of our employees. If you think so too, we'd love to hear from you! Click here to send an email to EmployeeRecognition@burlingame.org if an individual or department has

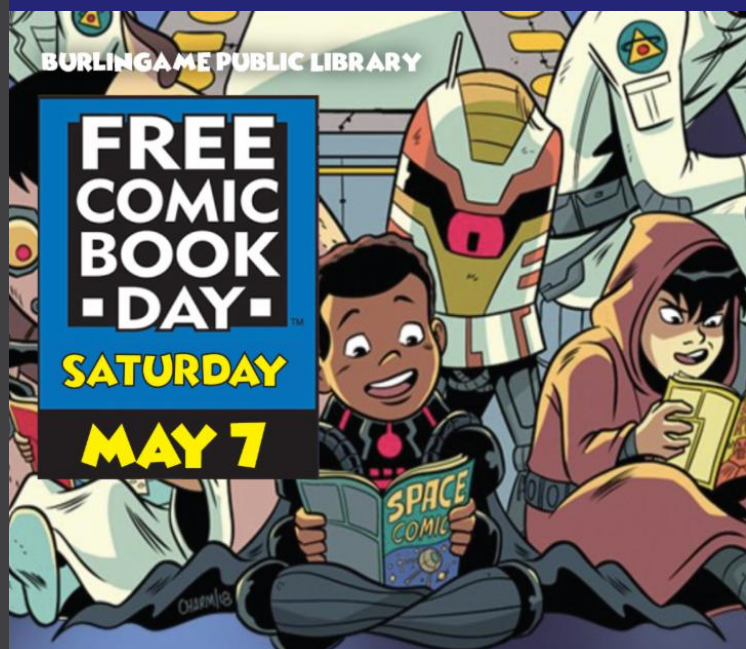
Applications to Fill Two Vacancies on the Library Board of Trustees

Are you interested in getting more involved with the City? Now is your chance to join the Library Board of Trustees! **The City is seeking to fill two seats on the Library Board of Trustees.** Completed applications and supplemental questionnaires are due by 5:00 p.m. on Friday, May 20, 2022.

To access the application and supplemental questionnaire, [click here](#).

If you have any questions regarding the position, please contact Executive Assistant Alyssa Diaz at 650-558-7204, or email adiaz@burlingame.org.

Events Around Town



**SATURDAY
MAY 7TH, 2022
10 AM-5 PM**

**ALL
AGES**

**PICK UP A FREE
COMIC BOOK
WHILE SUPPLIES LAST**

No Registration Required!

Visit our events page for
upcoming programs.
[www.burlingame.org
/library/events](http://www.burlingame.org/library/events)

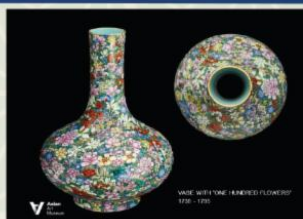
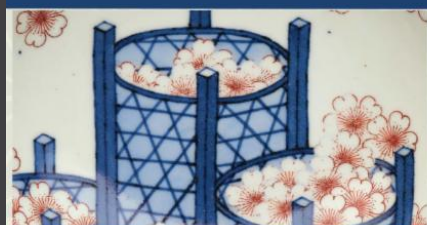


Burlingame Public Library

VIRTUAL ART TALK

Presented by the Asian Art Museum

**THE LANGUAGE OF
FLOWERS
IN ASIAN ART**



**FOR
ADULTS**

**Tuesday
May 10th
6:00-7:00 PM**

zoom

Meeting ID: 813 2584 8281
Passcode: 2022

NO Registration Required!

Visit our events page for
upcoming programs.
[www.burlingame.org
/library/events](http://www.burlingame.org/library/events)



The Language of Flowers in Asian Art

Tuesday, May 10th, 2022, 6:00 p.m. - 7:00 p.m.

The Language of Flowers in Asian Art showcases the expressive power of flowers in the arts and cultures of Asia. Since ancient times flowers have been cultivated in gardens, and represented in art. The properties of flowers have come to symbolize both human and divine qualities. Our program featuring objects from the Asian Art Museum's permanent collection focuses on six celebrated flowers and the messages the flowers convey - lotus, plum blossom, cherry blossom, chrysanthemum, tulip, and rose.

To join us, click [here](#).

Meeting ID: 813 2584 8281

Passcode: 2022

INDIE LENS POP-UP
TRY HARDER!
Virtual Movie Screening and Discussion
<https://ovee.itvs.org/screenings/qda0d>

Burlingame Public Library and Indie Lens Pop-Up present:

**Wednesday
May 11th, 2022
6:00 PM**

FOR ADULTS + TEENS

**Virtual Event.
No registration Required.**

No Registration Required!
Visit our events page for upcoming programs.
www.burlingame.org/library/events

BPL

***Try Harder!* Virtual Screening & Community Discussion**
Wednesday, May 11, 6:00 p.m.

Join us to watch and discuss *Try Harder!*, a local portrait of young adults in the most diverse American generation ever, as they navigate a quintessential rite of passage, the college application process, and make it their own.

Calendar Listing: <https://burlingame.libcal.com/event/9105471>

Screening URL: <https://ovee.itvs.org/screenings/qda0d> (No Zoom)

5TH ANNUAL

FUNDRAISER BOCCE BALL TOURNAMENT



SUNDAY, JUNE 12TH
9:00 AM (8:30 am Check-In)
WASHINGTON PARK

Teams of 4 to 6 players; \$100 per team
Register by 5/30: registration.burlingame.org
or call 650-558-7300 (Class P0109901)

Prizes for Top Finishers!

Proceeds will be used for improvements to local parks, youth scholarships, and new recreation program opportunities.

Donation Opportunities

- Cash or Check payable to "Burlingame Parks & Recreation Foundation"
- Sponsor a Court for \$100
- Donate a Raffle Prize



The Fresh Market! Thursdays Are Back!

Sundays, 9 a.m. - 1 p.m.

Thursdays, 3 p.m. - 7 p.m.

Park Road at Burlingame Avenue

Please continue to follow these important tips for shopping the Fresh Market:



- **Leave your pets at home, please.** By order of the San Mateo County Health Department, **no dogs are allowed** in Burlingame's Fresh Market.
- Come to the market in good health; please stay home if unwell.
- Wash hands/ refrain from touching your face.
- Wash all produce before consumption.

Community Updates (events/info. not sponsored by the City of Burlingame)

40TH *Signature* KITCHEN TOUR



Friday, May 13 • 10 AM – 3 PM



www.solmateo.org • 650.350.2094

Innovative Designs • Food Tastings • Boutique Shopping

SolMateo Celebrates Milestone Event: The 40th Signature Kitchen Tour!

Hillsborough, CA - On May 13, 2022, SolMateo will present its 40th Signature Kitchen Tour, giving home design enthusiasts a chance to tour five beautiful private homes in Burlingame, Hillsborough, and San Mateo Park. This self-guided tour showcases some of the Bay Area's most inspiring design talents and stunning homes. Guests will have the opportunity to view beautifully designed kitchens and gardens, sample morsels of delicious food, and view local floral designers' and artisans' work. The Tour is a fun-filled event that guests look forward to every year.

The 40th Signature Kitchen Tour is chaired by SolMateo member Sara Furrer, who said, "with each Tour we strive to highlight new architectural trends in the industry and treat participants to unique vendors." This year, SolMateo is pleased to feature a home with an ADU (Accessory Dwelling Unit) and merchants selling everything from custom stationery to artisanal cookies. "It's a wonderful opportunity to spark ideas for your own property, spend time with friends and family, and support mental health in our community," said Sara.

SolMateo is a volunteer group committed to shining a light on mental health in San Mateo County. "Our membership shares a passion to destigmatize mental illness and support our neighbors, said Jenny Smith, SolMateo Co-President. Since 1976, SolMateo has raised over \$2.7 million and helped fill the funding gap for critical local mental health organizations including the Crisis Intervention and Suicide Prevention Center of StarVista and Mental Health Association of San Mateo County.

"By raising money and awareness for organizations that provide essential services like suicide prevention hotlines, emergency housing for homelessness, and counseling

services, SolMateo strives to help neighbors obtain important resources in times of need,” said Nancy Minnig, SolMateo Co-President.

Kitchen Tour Tickets - \$60 in advance/\$70 at the door. Available online at [Eventbrite](https://www.eventbrite.com/e/solmateo-kitchen-tour-tickets-14944444444) or solmateo.org and at Draeger's in San Mateo after April 15.



Wildlife In Need?

If you find a wild animal that appears orphaned, injured or in distress, please call the Peninsula Humane Society at 650-340-7022 for guidance and assistance. If it is safe to do so, you can also bring the animal directly to their Center for Compassion located at 1450 Rollins Road in Burlingame 11 a.m. to 6 p.m. every day. If you find a wild animal in need of care after hours and it is safe to transport, please bring the animal to After Hours Receiving at the Coyote Point Shelter, located at 12 Airport Blvd in San Mateo. Do not give any food, water or medicine – these often do more harm than good. Do not attempt to remove fishing line or something that may be caught or tangled around the animal. For more information, please visit <https://phs-sPCA.org/wildlife/found/>



Celebrate San Mateo County's Sustainability Heroes

Registration is now open for Sustainable San Mateo County's 23rd Annual Awards Celebration on Wednesday, May 11. The event will honor four local sustainability heroes and one new sustainable building, along with the winners of Peninsula Clean Energy's All-Electric Leader Awards. Admission to the Awards Celebration is free, but registration is required at https://bit.ly/SSMC_Awards_2022.

State Senator Josh Becker will emcee the Awards Celebration with former Menlo Park Mayor Kirsten Keith. The celebration will take place on Zoom from 6 to 7 p.m. Sponsorships are available; visit <https://sustainablesanmateo.org/sponsorship-opportunities> for details. All sponsors will be invited to a virtual VIP Reception on May 4 and will receive complimentary wine in advance of the event. Donors contributing \$1,000 or more will receive Premium Baskets filled with foods reflecting the bounty of San Mateo County.

At the Awards Celebration, Each Green Corner, Kalimah Salahuddin, and Seamless Bay Area will receive Sustainability Awards, while Robert Whitehair will be honored with the Ruth Peterson Award, established in memory of a dedicated SSMC leader, for his contributions to the organization. SSMC and the American Institute of Architects' San Mateo County Chapter will present the Green Building Award to the Marshall Medical Offices on Kaiser Permanente's Redwood City campus. The [All-Electric Leadership Awards](#), sponsored by [Peninsula Clean Energy](#), will also be presented during the Awards Celebration.

Registration is also open for SSMC's 3rd Virtual Auction, which will run May 4 through May 15. Items offered include a 1-week stay at a home in Lake Tahoe, a 3-day luxury wine country package, a cocktail hour with renowned chef Jesse Cool in her garden, a private elephant seals tour for eight at Año Nuevo, and many fine wines and restaurants. Register at <https://fundraiser.bid/ssmc2022>.

Proceeds from the auction and the awards celebration event will benefit SSMC, a 501(c)(3) nonprofit dedicated to accelerating sustainability in San Mateo County.

EL CAMINO REAL ROADWAY RENEWAL



ECR Final Environmental Document is Approved!

Caltrans' *Final Environmental Impact Report/Environmental Impact Statement, Final Section 4(f) Evaluation, and Record of Decision* (FEIR/FEIS) for the El Camino Real Roadway Renewal project is published and available for viewing at www.ECRalternatives.com. This important milestone wraps up the Project Approval and Environmental Document (PAED) phase of this project and moves it into the Project Design (Plans, Specifications, and Estimates or PS&E) phase.

A hard copy, full-color, bound version of the FEIR/FEIS will be available for viewing at the [Burlingame Public Library](#) (480 Primrose Road, Burlingame CA 94010) and the [Caltrans District 4 Office](#) (111 Grand Avenue, Oakland CA 94612). To request the FEIR/FEIS in a special format, please contact Alejandro Lopez at Alejandro.Lopez@dot.ca.gov or call (510) 385-6856. For more information about this project please visit www.ElCaminoRealProject.com.

Family Fun on the Nature Trail

Sunday, May 15, 11 a.m.

The Citizens Environmental Council invites you to a family-friendly hike along San Francisco Bay on Sunday, May 15, at 11 a.m. Make new friends who care about the environment, take in a gorgeous view of the Bay, and get some fresh air and exercise. There's no charge.

You may choose to pick up trash as you go (plogging) and participate in an optional photo scavenger hunt. The hike will start at Bayfront Park, which is located at Old Bayshore Highway and Millbrae Ave.

To register, click [here](#). For more information, contact info@cecburlingame.org.



BEER TASTING BENEFITING SHELTER PETS!

JUNE 11, 2022

2PM - 5PM

**WEST WASHINGTON PARK,
BURLINGAME**



PHS-SPCA.ORG/BEER

EMAIL US!

LSCHNEIDER@PHS-SPCA.ORG



curative



COVID-19 Testing

Self-collected, shallow nasal PCR test

Results within 1-2 days upon receipt of the sample at the lab

No cost to insured or uninsured. If insured, please have your information ready.



Burlingame Intermediate School
1715 Quesada Way
Burlingame, CA 94010



Mondays
1:00PM - 7:00PM

visit cur.tv/burlingame
or call 888.702.9042
to schedule an appointment



BECOME A CAREGIVER

San Mateo County Public Authority is currently recruiting caregivers to join the In-Home Supportive Services (IHSS) Registry

- Excellent opportunity to earn extra money
- Whether you are a student in a medical field, a retired adult, want a change in career or just like helping people, you can earn money while helping those in need of assistance to remain in their homes safely and with dignity.
- Work part time or full time, YOU decide!
- Call us now and join our Registry!
- The hourly pay rate is \$17.70 Overtime pay for hours worked over 40 hours per week is \$26.55.

Website:

**<https://www.smchealth.org/post/ihss-provider-registry>
CALL US TODAY**

**We are seeking
compassionate and dedicated
caregivers for our IHSS
Recipients**

**Medical, Dental and Vision
Insurance available at low
cost, if eligible**

**Optional Retirement program
for all IHSS providers**

**Public Transportation
Reimbursement**

Job Development Training

No Experience Required

Flexible Schedules

All languages welcome

**Experience and skills
obtained look great on your
resume**

SAN MATEO COUNTY PUBLIC AUTHORITY

225 37th Ave San Mateo, CA 94403

Maria Esparza-Diaz
650-713-8461
mesparza-diaz@smcgov.org

**Bilingual Staff: Spanish and
Chinese**

Shop Burlingame - your tax dollars support City services!

A message from the Burlingame/SFO Chamber of Commerce





City of Burlingame | 501 Primrose Road, Burlingame, CA 94010

[Unsubscribe smichael@burlingame.org](mailto:smichael@burlingame.org)

[Update Profile](#) | [Constant Contact Data Notice](#)

Sent by newsletter22@burlingame.org powered by



Try email marketing for free today!