

CITY OF TROY UNDEVELOPED PARK INVENTORY

APRIL, 2018

CONDUCTED BY
Ida Edmunds
Barbara Fowler

Site #1

Parcel #88-20-02-451-010

Section 2, north side of Square Lake, between Atkins and Kensington Church

Across from Willow Grove on the south

No maintenance

6.5 acres

**Site #2**

Parcels #'s 88-20-04-476-011 & 012

Section 4, north side of Square Lake, west of Livernois

Northwest corner of Square Lake and Blackwall, across from

Niles School. Several mature deciduous trees; mowed and maintained

1.7 acres



Site #3

Parcels #'s 88-20-09-451-014, 015, 016 & 017

Section 9, north side of Long Lake Road, one lot east of 1-75.

Between Deinmore (entrance to Paslin business) and Daniels

No trees; mowed and maintained

2.48 acres

**Site #4**

Parcel #88-10-101-004

Section 10, south side of Square Lake, east of Livernois

Chain-link fence on east and west borders, wood fence on south

Few mature trees on east border; mowed and maintained

.70 acres



Site #5

Parcels #'s 88-20-10-452-010, 007 & 014

Section 10, on north side of Long Lake between Livernois and Rochester Road

Northwest corner of Somerton and Long Lake

Extends west to the back of the lots on Shady Creek

Mature trees; partially mowed

3.04 acres

**Site #6**

Parcel #88-20-11-201-029

Section 11, south side of Square Lake between Rochester and John R

Large site, bordered by new development (Oak Forest) on west and south

Bisected by Fetterly drain which is bordered on the west side by a split-rail fence

East side of site is heavily wooded with mature trees

Western portion next to Oak Forest is mowed and maintained

14.6 acres



Site #7

Parcel #88-20-15-426-053 & 054

Section 15, on Rochester Road between Long Lake and Wattles

West side of Rochester Road, just north of Barclay, south of Longfellow

Narrow concrete pad between curb and sidewalk; 3 chained entrances

Several mature trees, some evergreen; mowed and maintained

5.02 acres

**Site #8**

Parcel #88-20-16-200-026

Section 16, south side of Long Lake, west of Livernois,

borders I75 on the west

Heavily wooded with brush and small trees; no maintenance

14.12 acres



Site #10

Parcel #88-20-22-101-041 Section 22, on Wattles between Livernois and Rochester Rd. South side of Wattles, east of newly constructed house, Small narrow lot, 175 feet wide
Some large trees on east border; mowed and maintained
1.4 acres

**Site #11**

Parcel #88-20-24-100-041
Section 24, east side of John R, north of Big Beaver
3500 John R, a red building with 2 garage doors and a school bell
Partially developed with soccer goals and 2 small bleachers
Many mature trees; partially mowed and maintained
Includes a portion of Shanahan drain
6.13 acres



Site #12

Parcel #88-20-25-126-018

Section 25, south side of Big Beaver between John R and Dequindre

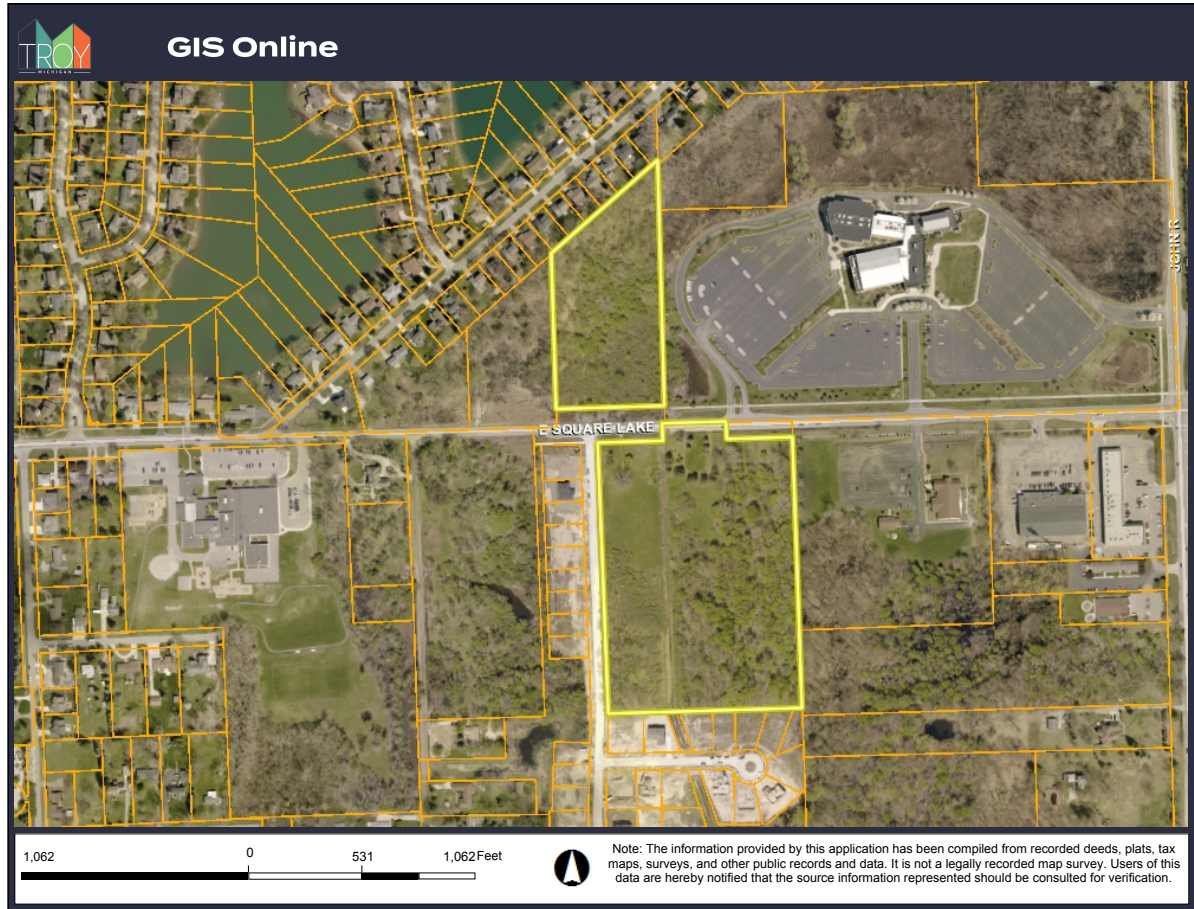
Behind St. Joseph Chaldean Church;

Limited Access from Garry Street off John R

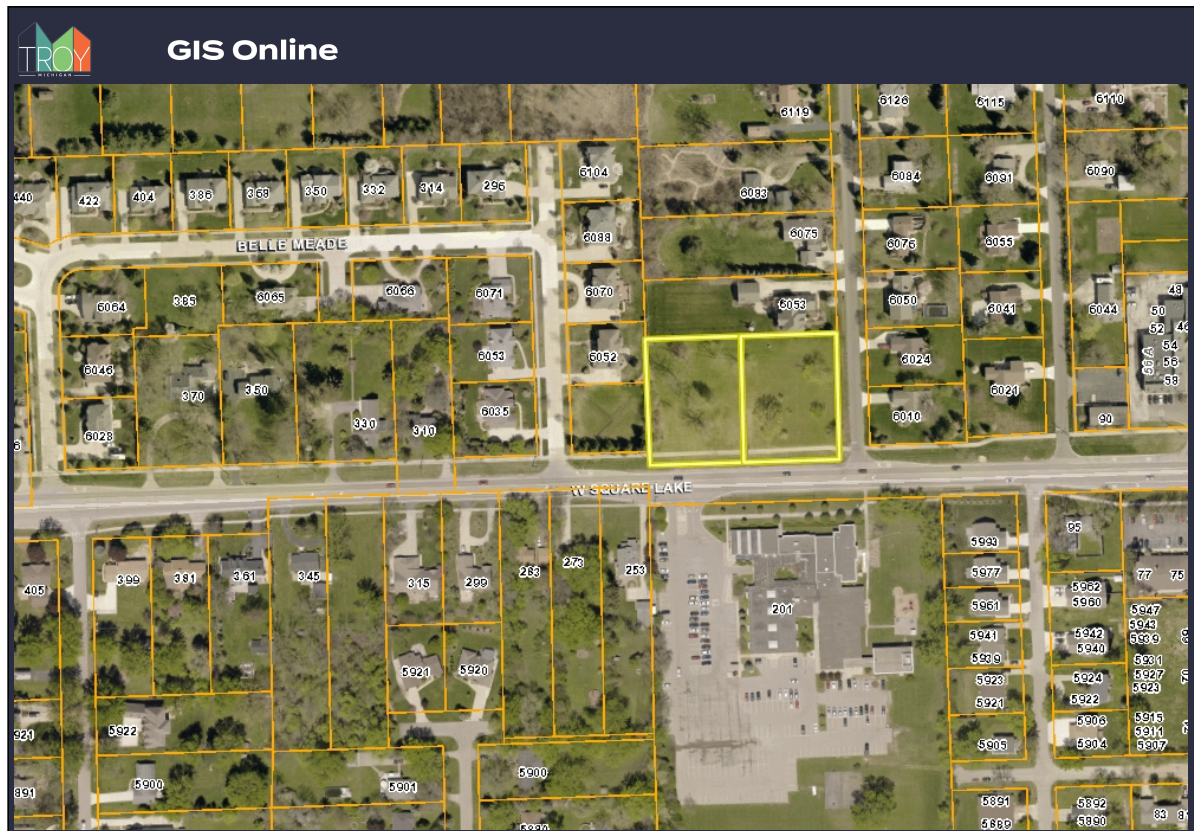
No trees; Mowed and maintained



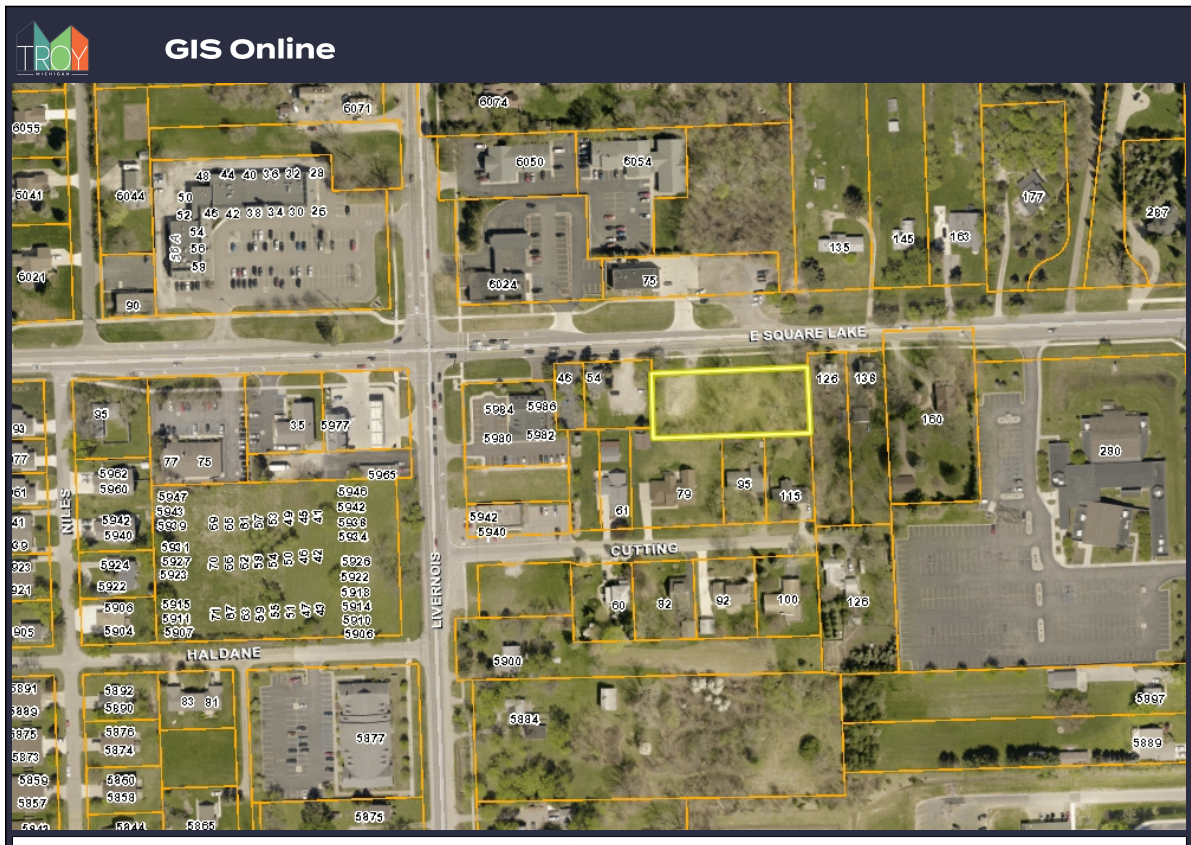
Site #1 & #6



Site #2



Site #4

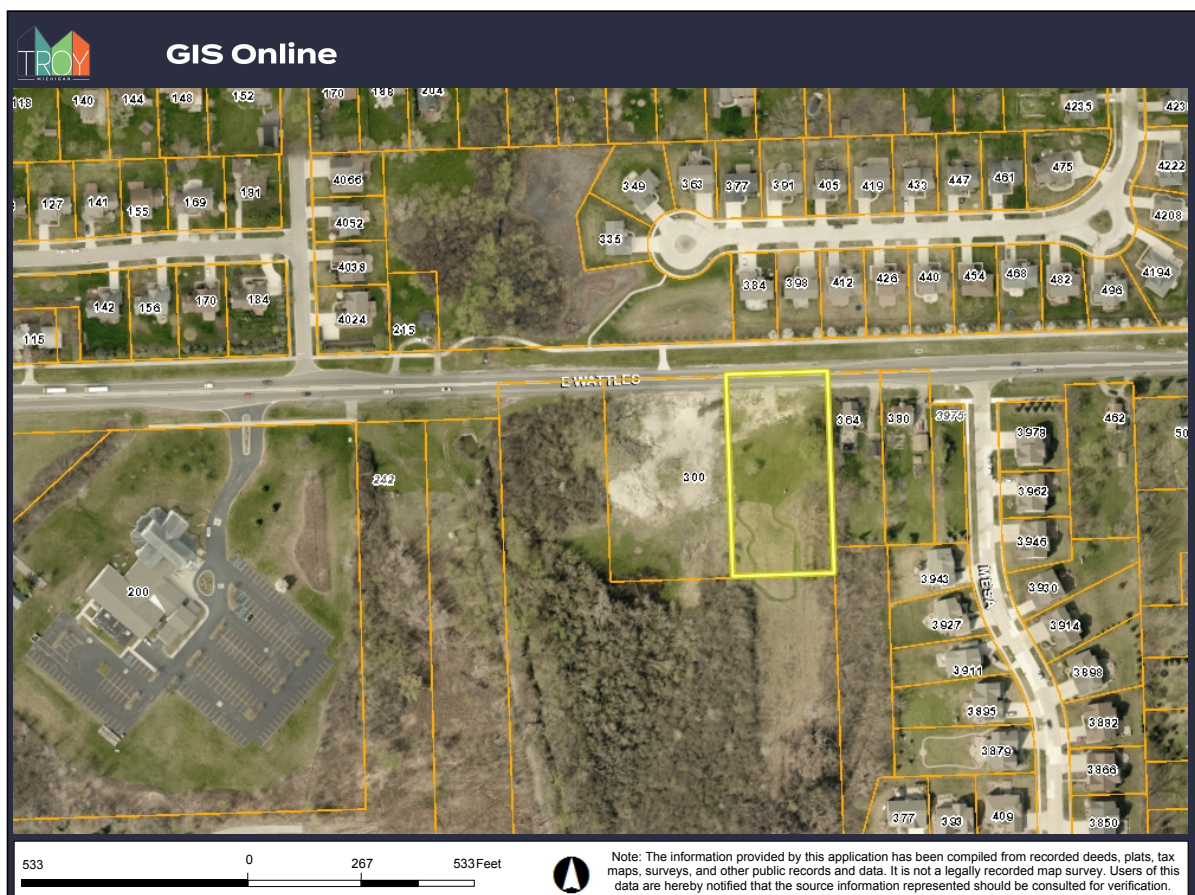




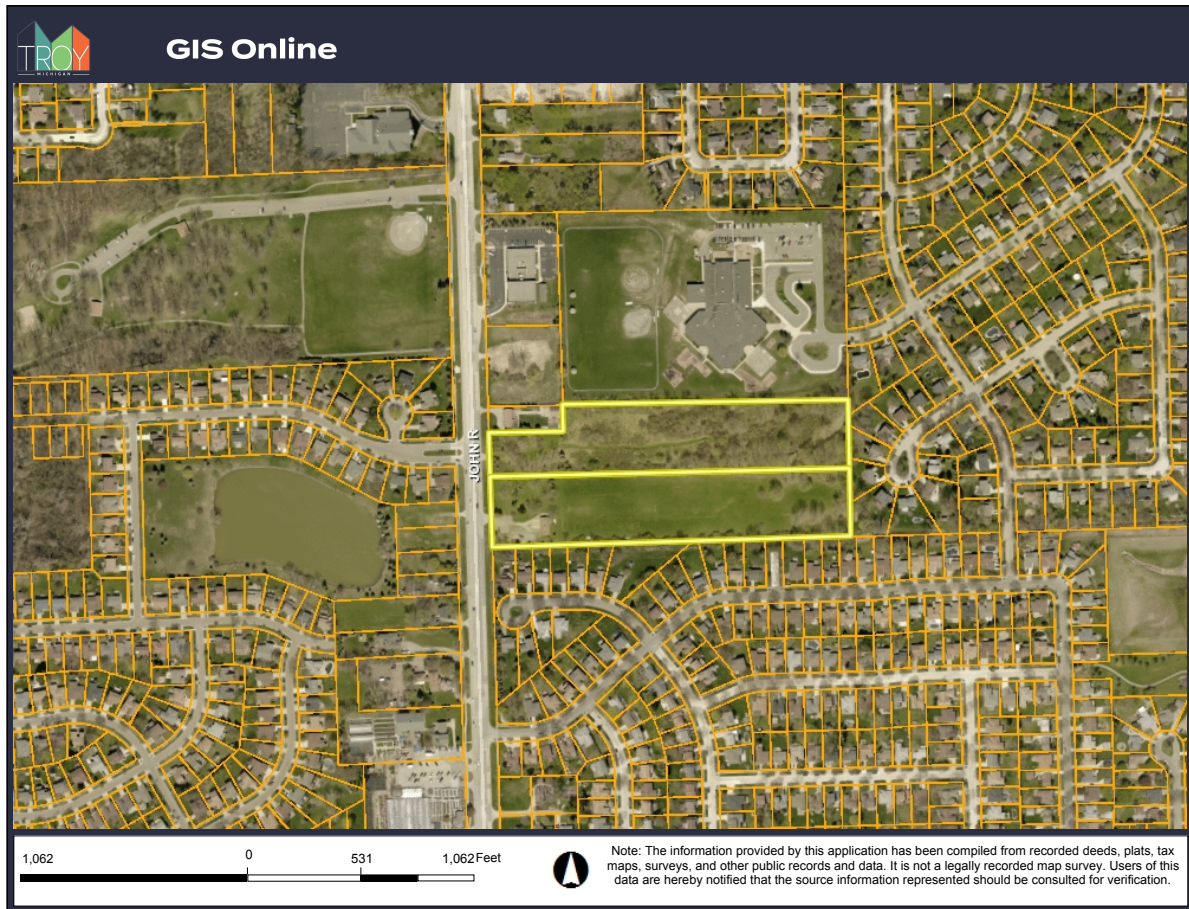
Site #8



Site #10



Site #11



Site #12

