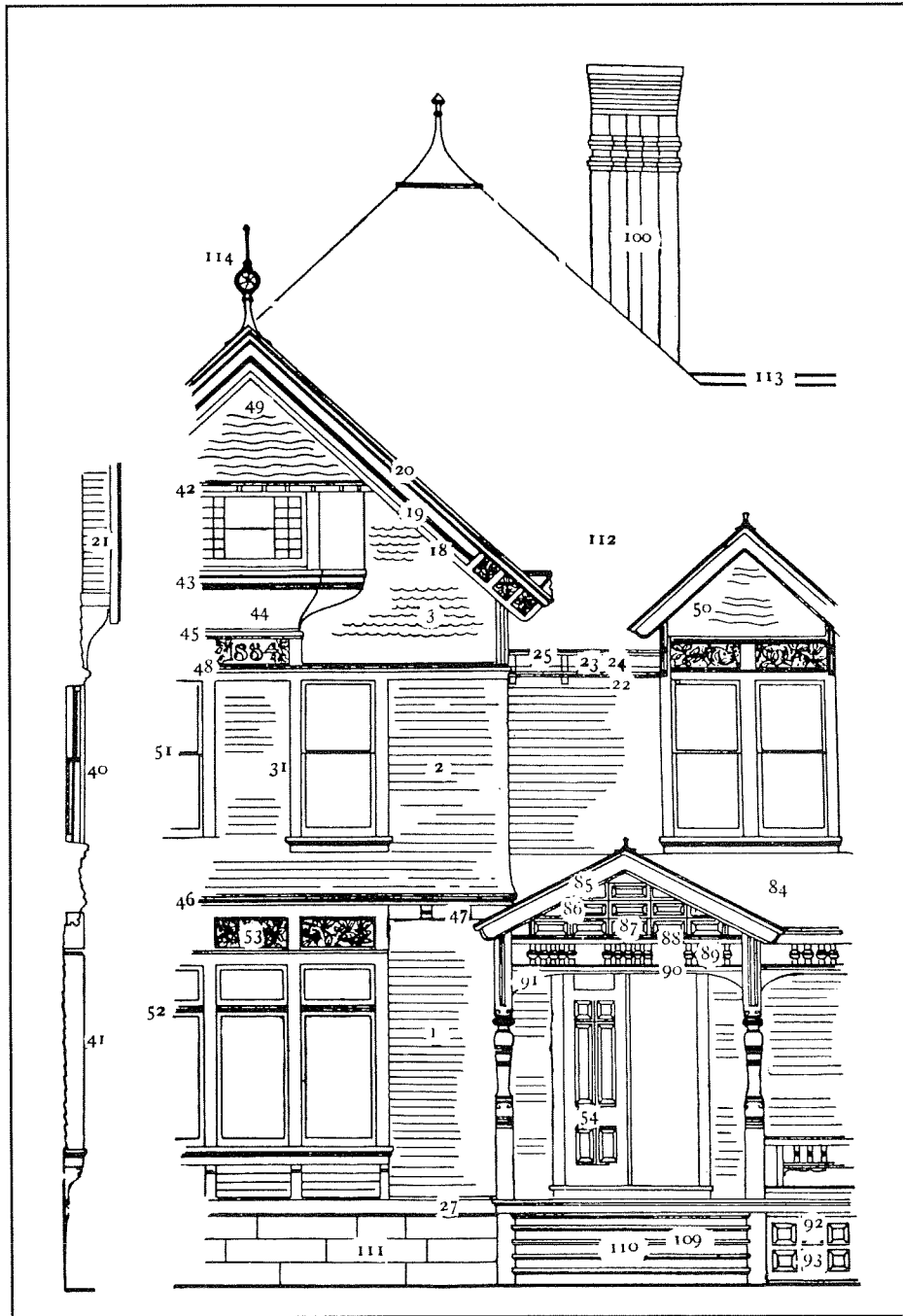


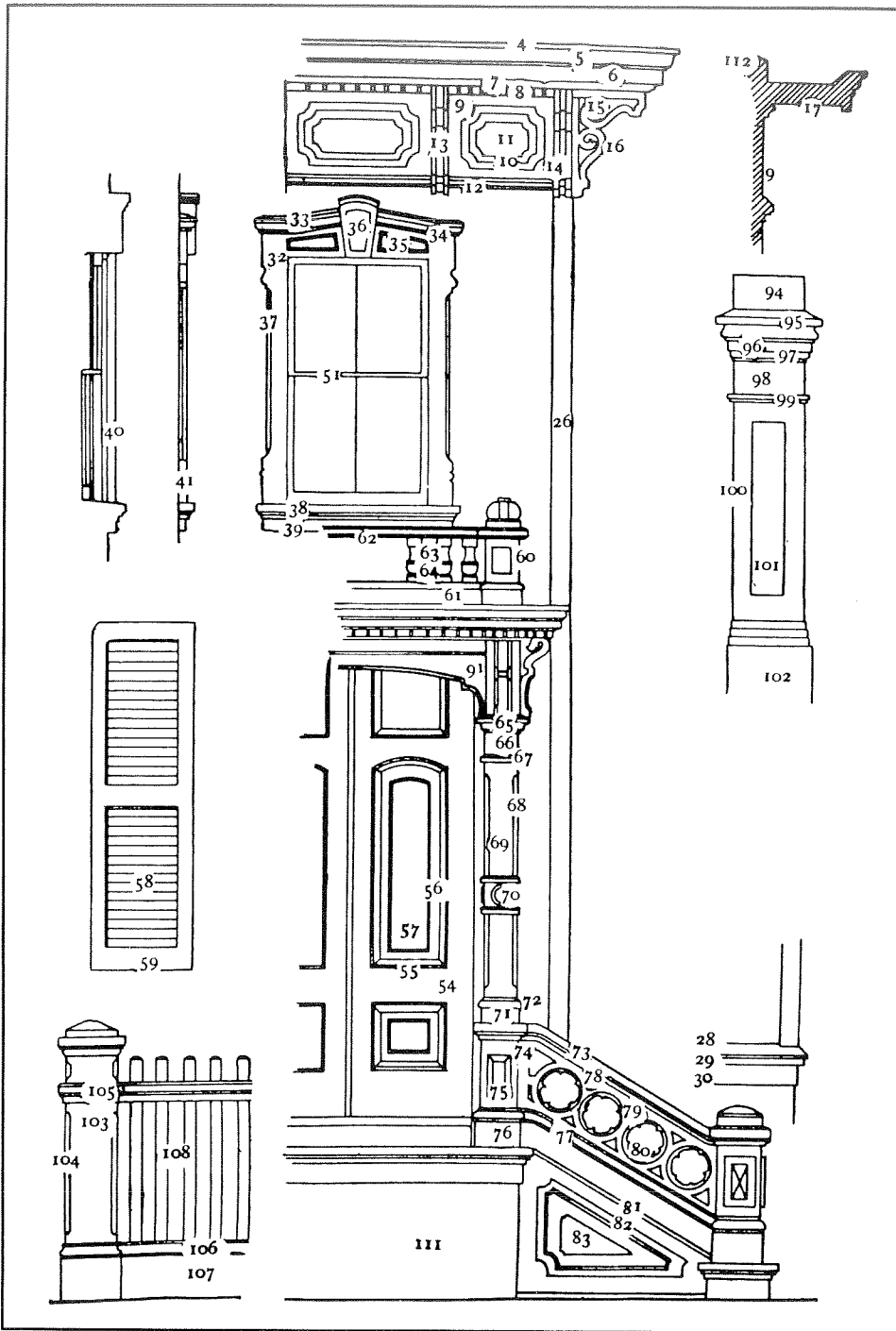
PICTORIAL GLOSSARY

Numbers are keyed to all three drawings of this Victorian architectural glossary, from *Color Applied to Architecture* (Cleveland: Sherwin-Williams Company, 1887). The Athenaeum of Philadelphia Collection

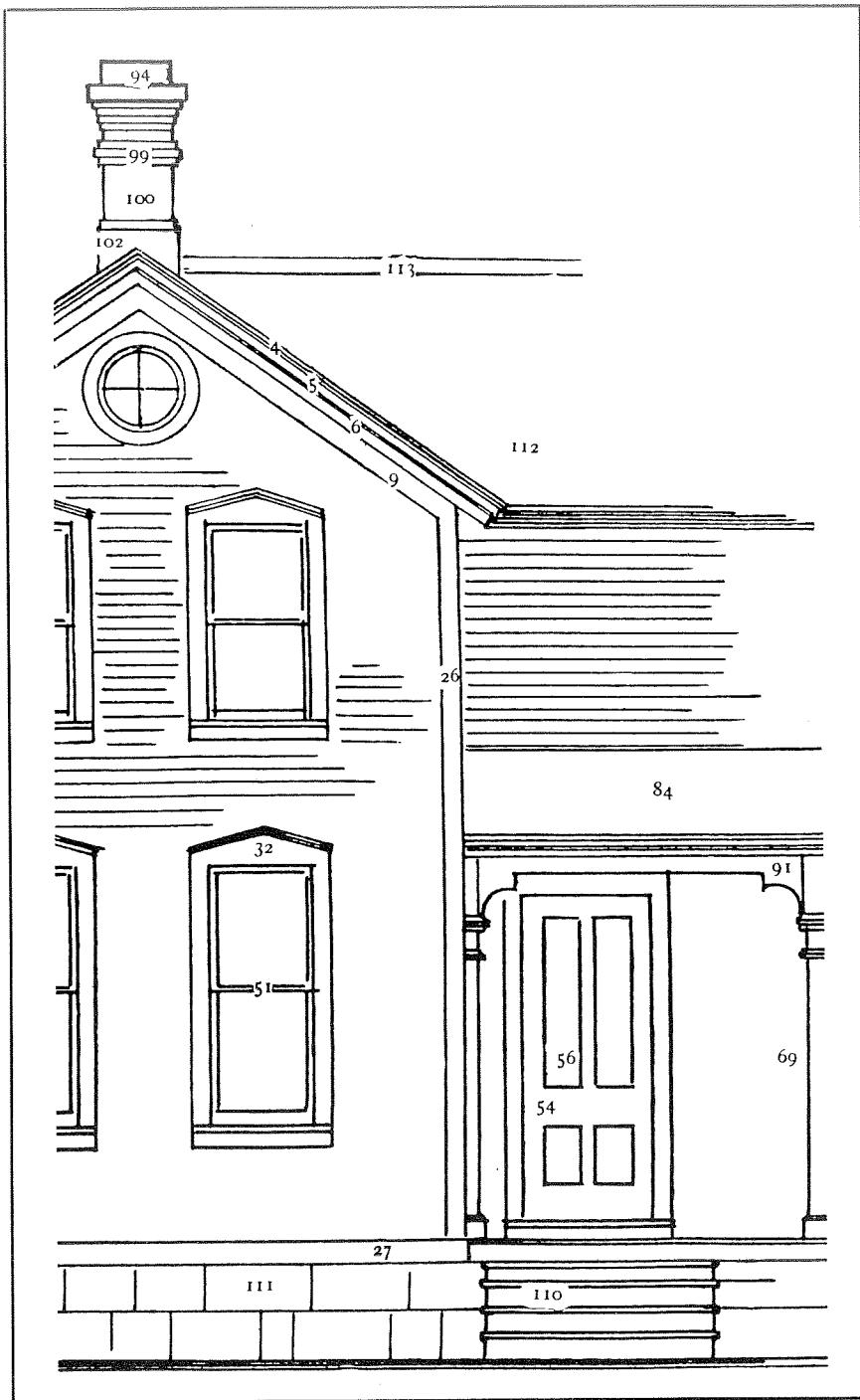


- 1.-3. Body
 - 1. First story
 - 2. Second story
 - 3. Attic
- 4.-25. Cornice
 - 4. Edge of crown mold
 - 5. Crown
 - 6. Fascia
 - 7. Bed mold
 - 8. Dentals
 - 9. Frieze
 - 10. Panel mold
 - 11. Panel
 - 12. Architrave
 - 13. Sunken face of sandwich bracket
 - 14. Raised face of sandwich bracket
 - 15. Bracket panel
 - 16. Bracket margin
 - 17. Soffit
 - 18.-20. Bargeboard
 - 21. Ceiling under eaves
 - 22. Foot pieces
 - 23. Gutter face
 - 24. Gutter brackets
 - 25. Gutter cap
- 26. Corner Board
- 27.-30. Water Table
 - 28. Slope
 - 29. Edge
 - 30. Face
- 31.-45. Window Frame or Casing
 - 32. Face
 - 33. Cap fillet
 - 34. Cap mold
 - 35. Cap panel
 - 36. Keystone
 - 37. Chamfer
 - 38. Sill

(continued)



- 39. Apron
- 40. Reveal
- 41. Edge
- 42. Attic window cornice
- 43. Attic window sill mold
- 44. Attic window cove
- 45. Attic window base mold
- 46. Belt Course
- 47. Beam Ends
- 48. Attic Belt Course
- 49.-50. Tympanum
- 51. Window Sash
- 52. Window Transom
- 53. Cut Work
- 54.-57. Doors
- 54. Stiles and rails
- 55. Mold
- 56. Receding part of panel
- 57. Projecting part of panel
- 58.-59. Shutters (Blinds)
- 58. Louvers (slats)
- 59. Frame
- 60.-93. Porch
- 60. Balustrade post
- 61. Balustrade base
- 62. Balustrade rail
- 63. Receding part of baluster
- 64. Projecting part of baluster
- 65. Abacus
- 66. Capital
- 67. Neck mold
- 68. Chamfer
- 69. Shaft
- 70. Rosette
- 71. Plinth
- 72. Plinth mold
- 73. Rail
- 74. Dado
- 75. Dado panel
- 76. Base
- 77. Base
- 78. Rail
- 79. Rosette
- 80. Plinth
- 81. Plinth mold
- 82. Plinth
- 83. Base
- 84. Dado panel
- 85. Dado
- 86. Rail
- 87. Plinth
- 88. Plinth mold
- 89. Shaft
- 90. Chamfer
- 91. Neck mold
- 92. Capital
- 93. Abacus
- 94. Belt Course
- 95. Belt Course
- 96. Belt Course
- 97. Belt Course
- 98. Belt Course
- 99. Belt Course
- 100. Tympanum
- 101. Tympanum
- 102. Tympanum
- 103. Balustrade post
- 104. Balustrade post
- 105. Balustrade post
- 106. Balustrade post
- 107. Balustrade post
- 108. Balustrade post
- 109. Balustrade post
- 110. Balustrade post
- 111. Balustrade post
- 112. Balustrade post



- 77. Base mold
- 78. Ornamental rail
- 79. Ornamental panel
- 80. Ornamental chamfer
- 81. Bead below steps
- 82. Panel mold below steps
- 83. Panel below steps
- 84. Roof
- 85. Face rafter (barge-board)
- 86. Gable rail
- 87. Gable panels
- 88. Plate
- 89. Cornice balusters
- 90. Cornice bracket
- 91. Cornice rail
- 92. Rails below
- 93. Panels below
- 94.-102. Chimney
 - 94. Top of cap
 - 95. Crown mold of cap
 - 96. Fascia of cap
 - 97. Bed mold of cap
 - 98. Frieze of cap
 - 99. Architrave
 - 100. Shaft
 - 101. Panels
 - 102. Base
- 103.-108. Fence
 - 103. Post
 - 104. Post chamfer
 - 105. Upper rail
 - 106. Lower rail
 - 107. Base
 - 108. Pickets (balusters)
- 109.-110. Steps
 - 109. Tread mold
 - 110. Riser
- 111. Foundation
- 112.-114. Roof
 - 113. Ridge roll or cresting
 - 114. Iron finials (also common location for acroterion)

ROGER W. MOSS AND GAIL CASKEY WINKLER

VICTORIAN

EXTERIOR

DECORATION

*How to Paint
Your Nineteenth-Century
American House Historically*

HENRY HOLT AND COMPANY NEW YORK

ALSO BY ROGER W. MOSS AND GAIL CASKEY WINKLER
Victorian Interior Decoration: American Interiors 1830–1900

Copyright © 1987 by LCA Associates
All rights reserved, including the right to reproduce this
book or portions thereof in any form.
Published by Henry Holt and Company, Inc.,
521 Fifth Avenue, New York, New York 10175.
Distributed in Canada by Fitzhenry & Whiteside, 195 Allstate
Parkway, Markham, Ontario L3R 4T8.

Library of Congress Cataloging-in-Publication Data
Moss, Roger W., 1940–
Victorian exterior decoration.
1. Decoration and ornament, Architectural—United
States. 2. Decoration and ornament, Victorian—United
States. 3. Color in architecture—United States.
I. Winkler, Gail Caskey. II. Title.
NA3503.7.M68 1987 698'.12 86-15014
ISBN: 0-8050-0376-2

First Edition

Design by Kate Nichols
Printed in Japan
1 3 5 7 9 10 8 6 4 2

ISBN 0-8050-0376-2