

40A BK2

# THE HESSTON CEMETERY

## HESSTON, HARVEY COUNTY, KANSAS

F. E. Devlin, Civil Engineer, Newton, Kansas

Scale - 1" = 20' Feb. 9, 1911

I, F. E. Devlin, Civil Engineer, in Harvey County, State of Kansas, hereby certifies; that the accompanying is a true and correct plat of the tract of land surveyed and stacked out by me to be known as The Hesston Cemetery. The length and width of the lots and width of the drives and walks are as shown in feet and tenths of feet. F. E. Devlin.

### Description of the Hesston Cemetery

Beginning at the South West corner of the South East one fourth of the South West one fourth of Section Nine, Township No. 22, Range 1 West of the Sixth Principal Meridian: thence East Three hundred and thirty feet (330); thence North Two hundred and sixty-four feet (264); thence West Three hundred and thirty feet (330); thence South Two hundred and sixty-four feet (264) to the place of beginning. All being in the South East one fourth of the South West one fourth of Section Nine, Township No. 22, Range 1 West.

I, A. D. Brubaker, President of the Hesston Cemetery Association and L. S. Page, Secretary of the Hesston Cemetery Association hereby certify; that the above tract of land is owned by the Hesston Cemetery Association, and is platted for the purpose of selling lots for interment purposes. The lots and streets and alleys are as shown on the accompanying plat.

### The Hesston Cemetery Association

Seal By A. D. Brubaker President  
L. S. Page Secretary

State of Kansas } S.S.  
County of Harvey }

On the 11<sup>th</sup> day of March, 1911, before me appeared A. D. Brubaker and L. S. Page who are personally known to me to be the same persons who acknowledged the within instrument

B. H. Northcott,  
Notary Public.

My Commission Expires Jan. 27, 1915.

Filed for record this 15<sup>th</sup> day of March 1911, at 3 P. M.

J. F. Winger, Register of Deeds.  
Jelma Winger, Dep. Register of Deeds.

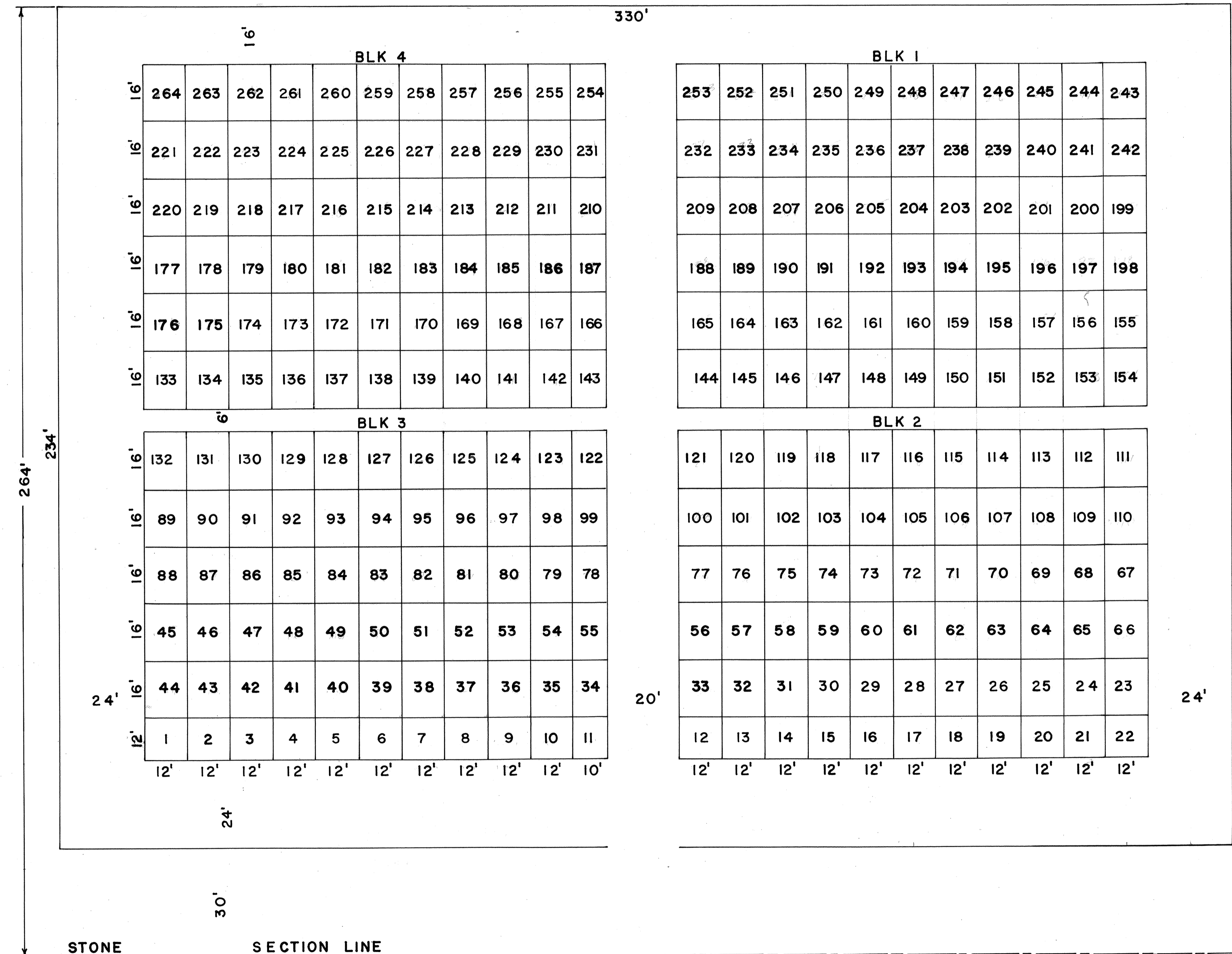
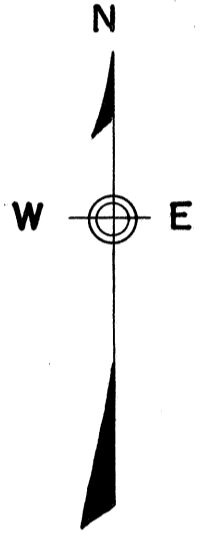
Entered on transfer record this day of 1911.  
County Clerk.

Original Plat of Hesston Cemetery found by Harvey County Register of Deeds, K. A. Shebler on June 20, 1963.

The original was of such size and in such a bad condition that it was impossible to file same in Plat Book.

This is a true and exact copy of the original plat and was prepared by the Harvey County Surveyor's Office on June 21, 1963.

Signed *L. C. Boyd*  
L. C. Boyd, Asst. Co. Engineer.



BOOK 2 P 940A

40A BK2

BK2 40A