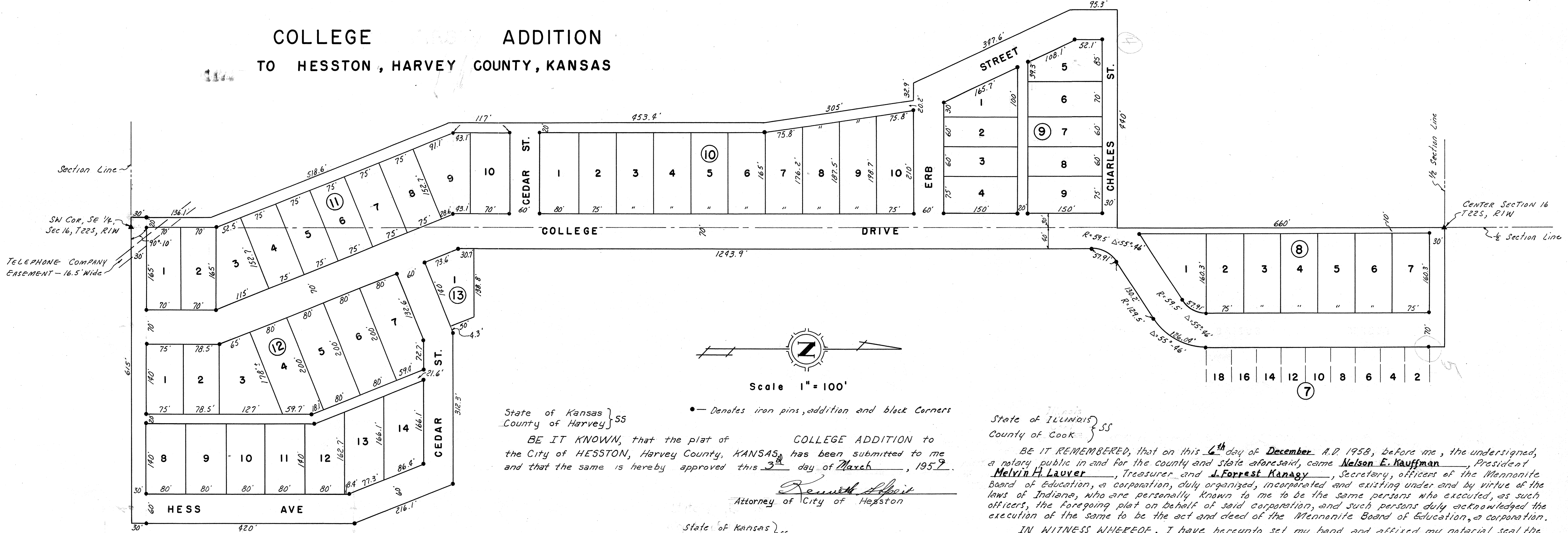


# COLLEGE ADDITION TO HESSTON, HARVEY COUNTY, KANSAS



41A-1

State of Kansas }  
County of Harvey } ss

We the undersigned Daniel J. Epp and Paul D. Newcomer, chairman and secretary respectively of the Planning Board of Harvey County Kansas do hereby certify that the plat of COLLEGE ADDITION to the city of Hesston, Harvey County Kansas, was submitted at a meeting duly convened on this 16th day of Feb. 1959. That at said meeting the said Board passed a resolution approving said plat and recommended that the same be approved by the Board of County Commissioners as an addition to the City of Hesston.

Daniel J. Epp  
Chairman

Paul D. Newcomer  
Secretary

State of Kansas }  
County of Harvey } ss

I, O. O. EDIGER, Consulting Engineer, in and for said County and State certify that I have surveyed and platted COLLEGE ADDITION to the city of HESSTON, KANSAS and that the accompanying plat is a true and correct exhibit of the property as surveyed, described as follows: Beginning at the center of Section 16, Township 22 South, Range 1 West of the Sixth Principal Meridian thence east along the north line of SE 1/4 Sec. 16 240.3 feet to the west line of blk 7 College Add., thence south a distance of 480 feet, thence to the right along a curve having a radius of 129.5 feet and a central angle of 55° 46' a distance of 126.04 feet, thence along the tangent to said curve a distance of 130.2 feet, thence to the left along a curve having a radius of 59.5 feet and a central angle of 55° 46' a distance of 57.91 feet, thence south a distance of 1243.9 feet, thence east a distance of 138.8 feet, thence southeasterly a distance of 50 feet, thence northeasterly a distance of 4.3 feet, thence east parallel to the south line of the Southeast 1/4, Section 16, a distance of 312.3 feet, thence southeasterly a distance of 216.1 feet, thence south 450 feet to the south line of Southeast 1/4, Section 16, thence west along said south line a distance of 615 feet, thence north a distance of 166.1 feet, thence northwesterly a distance of 518.6 feet, thence north a distance of 630.4 feet, thence northwesterly a distance of 305 feet, thence west a distance of 32.9 feet, thence northwesterly a distance of 397.6 feet, thence north a distance of 95.3 feet, thence east a distance of 440 feet, thence north a distance of 660 feet to the point of beginning.

O. O. Ediger  
Consulting Engineer

State of Kansas }  
County of Harvey } ss

BE IT KNOWN, that the plat of COLLEGE ADDITION to the City of HESSTON, Harvey County, KANSAS, has been submitted to me and that the same is hereby approved this 3rd day of March, 1959.

Kenneth Alpert  
Attorney of City of Hesston

• Denotes iron pins, addition and black corners

State of Kansas }  
County of Harvey } ss

BE IT REMEMBERED, that on this 10th day of December A.D. 1958, before me, a notary public in and for the county and state aforesaid, came ROY D. ROTH, President of Hesston Academy and Bible School, and trustee of the A. C. HESS Trust, who is personally known to me to be the same person who executed the foregoing plat.

IN WITNESS WHEREOF, I have here unto set my hand and affixed my official seal the day and year last above written.

Elma C. Jensen  
Notary Public

My Commission Expires: FEB. 2, 1960

State of Illinois }  
County of Cook } ss

BE IT REMEMBERED, that on this 6th day of December A.D. 1958, before me, the undersigned, a notary public in and for the county and state aforesaid, came Nelson E. Kauffman, President, Melvin H. Lauver, Treasurer and J. Forrest Managy, Secretary, officers of the Mennonite Board of Education, a corporation, duly organized, incorporated and existing under and by virtue of the laws of Indiana, who are personally known to me to be the same persons who executed, as such officers, the foregoing plat on behalf of said corporation, and such persons duly acknowledged the execution of the same to be the act and deed of the Mennonite Board of Education, a corporation.

IN WITNESS WHEREOF, I have hereunto set my hand and affixed my notarial seal the day and year last above written.

Clace N. Collins  
Notary Public

My Commission expires: 9-26-1960

State of Illinois }  
County of Cook } ss

BE IT REMEMBERED, that on this 6th day of December A.D. 1958, before me, the undersigned, a notary public in and for the county and state aforesaid, came Nelson E. Kauffman, President, and Melvin H. Lauver, Treasurer of the Mennonite Board of Education, and both trustees of the A. C. HESS Trust, who are personally known to me to be the same persons who executed the foregoing plat and such persons duly acknowledged the execution of the same.

IN WITNESS WHEREOF, I have hereunto set my hand and affixed my official seal, the day and year last above written.

Clace N. Collins  
Notary Public

My Commission expires: 9-26-1960

KNOW ALL MEN BY THESE PRESENTS that the MENNONITE BOARD OF EDUCATION, a corporation, organized and existing under the laws of Indiana, and THE TRUSTEES of the A. C. HESS TRUST, have caused the land described in the Engineer's Certificate to be surveyed and platted into lots and streets to be known as "COLLEGE ADDITION" to the City of Hesston, Kansas. The streets and alleys are hereby dedicated to and for the use of the public.

Daniel Kauffman  
Resident Agent

Nelson E. Kauffman  
President

Melvin H. Lauver  
Treasurer

J. Forrest Managy  
Secretary

THE MENNONITE BOARD OF EDUCATION, a corporation,  
BY  
Nelson E. Kauffman  
President  
Melvin H. Lauver  
Treasurer

TEST:  
Nelson E. Kauffman  
President  
Melvin H. Lauver  
Treasurer  
J. Forrest Managy  
Secretary

This plat of COLLEGE ADDITION to HESSTON, Harvey County, KANSAS, has been submitted to and approved by the City Council of the City of Hesston, Kansas. Dated this 14th day of January, 1959

Murray C. Sandy, Mayor

Bernard Rogier, City Clerk

Approved by the County Commissioners of Harvey County, Kansas, this 17th day of February, 1959

Edom Stute, Chairman

State of Kansas }  
County of Harvey } ss

This is to certify that this instrument was filed for record in the Register of Deeds Office on the 12 day of March, 1959, at 4 o'clock P M, and is duly recorded in Vol. 203 of Miss. page 61.

Minnie Reid, Register of Deeds

Clay Hedrich, County Clerk

Entered on Transfer Record this 12 day of March, 1959

BOOK 2 - 2941 A-1

41A-1 BK2

41A1 BK2