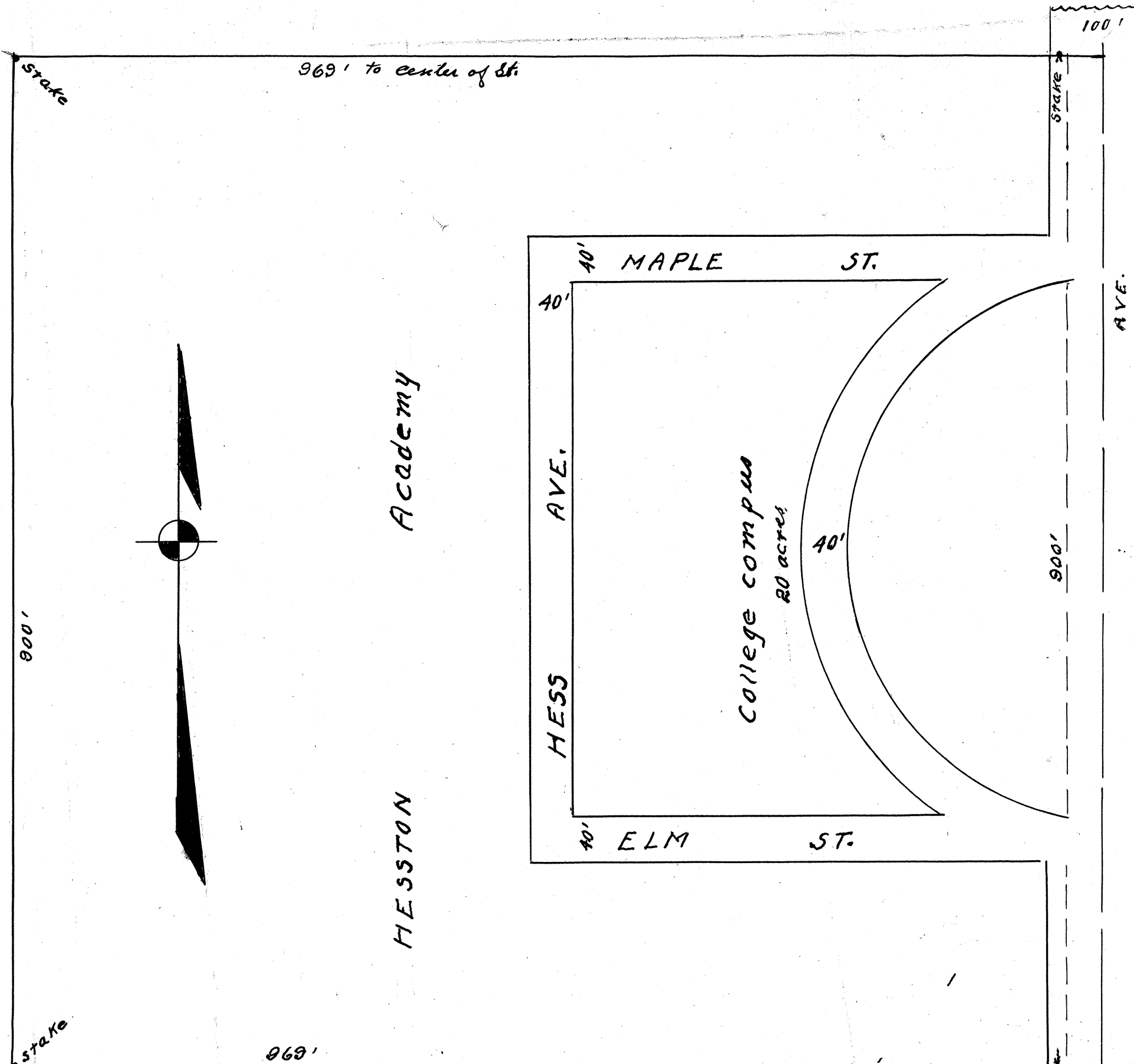


4 1/2 BK 2

41 1/2
BK 2



COLLEGE SUPPLEMENTAL ADD.
OF
BLOCK 4 and 5
HESSTON KANSAS

at the request of P. M. Erb I made a survey for the Hesston academy beginning at the south end of Shaver ave. found a Iron stake from a former survey from this I ran north on shaver ave. nine hundred seven 307 feet set a temporary stake for the south east corner of Block 2 College theme north nine hundred sixty 960 feet set a temporary stake for the N. E. corner of Block 3 and for the S. E. corner of College Campus theme north nine hundred 900 feet set temporary stake for the N. E. corner of College Campus from this stake I ran west at right angles nine hundred sixty nine 969 feet set Iron stake then south nine hundred 900 ft set Iron stake then east nine hundred sixty nine 969 feet to the S. E. corner of College Campus. survey Block 4 and 5 College set Iron stake of each corner of Blocks streets and alley. all lots are 50 x 150 feet all Iron stakes on Shaver ave. set forty two 42 feet from center of street on west side of walk

STAKE 1	60	STAKE 2	150'	STAKE 3	150'
3		4		5	
5		6		7	
7		8		9	
9		10		11	
11		12		13	
13	COLLEGE	14	COLLEGE	15	COLLEGE
15	COLLEGE	16	COLLEGE	17	COLLEGE
17	COLLEGE	18	COLLEGE	19	COLLEGE
19	BLOCK 5	20	BLOCK 4	21	BLOCK 4
21	BLOCK 5	22	BLOCK 4	23	BLOCK 4
23	BLOCK 5	24	BLOCK 4	25	BLOCK 4
25	BLOCK 5	26	BLOCK 4	27	BLOCK 4
27	BLOCK 5	28	BLOCK 4	29	BLOCK 4
29	BLOCK 5	30	BLOCK 4	31	BLOCK 4
31	BLOCK 5	32	BLOCK 4	33	BLOCK 4
33	BLOCK 5	34	BLOCK 4	35	BLOCK 4
35	BLOCK 5	36	BLOCK 4	37	BLOCK 4

all of which is fully explained as shown on Plat
Hesston Harvey County Kansas
February 21 - 1922
A. HAY C. ENG.
State of Kansas Harvey County ss
This instrument was filed for Record the 2nd day of May A.D.
1922 and duly Recorded in Plat Book 2, Page 41 1/2
J. F. Winger, Register of Deeds.
W. M. Embury, County Clerk

BLOCK 3

Book 2 pg 41 1/2

Book 2

4 1/2 BK 2

BK 2
4 1/2