

BK2

# COMMERCE PARK

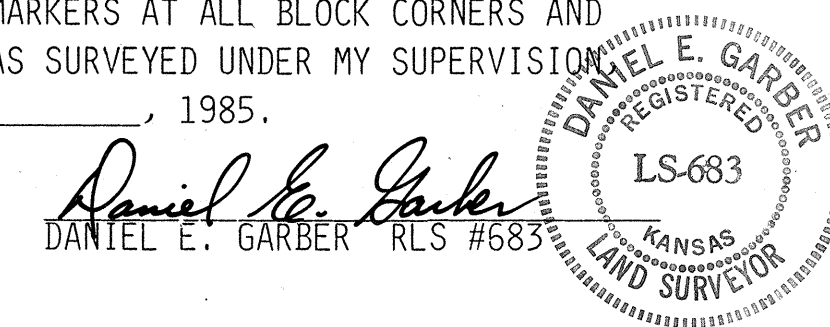
## A SUBDIVISION IN THE SOUTHWEST 1/4 SECTION 15, TOWNSHIP 22 SOUTH, RANGE 1 WEST OF THE 6th PRINCIPAL MERIDIAN, HARVEY COUNTY, KANSAS.

**DESCRIPTION:**

BEGINNING AT THE SOUTHEAST CORNER OF THE SOUTHWEST QUARTER OF SECTION 15, TOWNSHIP 22 SOUTH, RANGE 1 WEST OF THE 6TH PRINCIPAL MERIDIAN; THENCE WEST ALONG THE SOUTH LINE OF SAID SW $\frac{1}{4}$  225.00 FT.; THENCE WITH A DEFLECTION ANGLE 89°56'25" RIGHT-NORTH ALONG THE EAST LINE OF COMMERCE DRIVE 1322.21 FEET TO THE NORTH LINE OF THE SOUTHEAST QUARTER OF SAID SW $\frac{1}{4}$ ; THENCE WITH A DEFLECTION ANGLE 90°40'30" RIGHT-EAST ALONG THE NORTH LINE OF THE SE $\frac{1}{4}$  OF SAID SW $\frac{1}{4}$  224.67 FEET TO THE NORTHEAST CORNER OF THE SE $\frac{1}{4}$  OF SAID SW $\frac{1}{4}$ ; THENCE WITH A DEFLECTION ANGLE 89°18'35" RIGHT-SOUTH ALONG THE EAST LINE OF SAID SW $\frac{1}{4}$  1319.80 FEET TO THE POINT OF BEGINNING CONTAINING 6.81 ACRES IN HARVEY COUNTY, KANSAS.

**SURVEYOR'S CERTIFICATE:**

I, DANIEL E. GARBER, A REGISTERED LAND SURVEYOR IN THE STATE OF KANSAS, DO HEREBY CERTIFY THIS PLAT TO BE A TRUE, CORRECT AND COMPLETE REPRESENTATION OF THE PROPERTY DESCRIBED ABOVE AND THAT I HAVE ESTABLISHED PERMANENT MARKERS AT ALL BLOCK CORNERS AND LOT CORNERS AS SHOWN HEREON, AS SURVEYED UNDER MY SUPERVISION THIS 10<sup>th</sup> DAY OF JANUARY, 1985.



**EASEMENTS:**

EASEMENTS SHOWN BY DASHED LINES ON THE ACCOMPANYING PLAT ARE HEREBY DEDICATED FOR PUBLIC USE AND MAY BE EMPLOYED AS A COVENANT RUNNING WITH THE LAND FOR THE PURPOSE OF INSTALLING, REPAIRING, RE-INSTALLING, REPLACING AND MAINTAINING SEWERS, WATER LINES, GAS LINES, ELECTRIC LINES AND POLES, TELEPHONE LINES AND POLES AND OTHER FORMS AND TYPES OF PUBLIC UTILITIES NOW OR HEREAFTER GENERALLY UTILIZED BY THE PUBLIC.

**STREETS:**

STREETS SHOWN ON THIS PLAT AND NOT HERETOFORE DEDICATED TO THE PUBLIC USE ARE HEREBY SO DEDICATED.

**BUILDING LINES:**

BUILDING LINES OR SETBACK LINES ARE HEREBY ESTABLISHED AS SHOWN ON THE ACCOMPANYING PLAT AND NO BUILDING OR PORTION THEREOF SHALL BE BUILT OR CONSTRUCTED BETWEEN THIS LINE AND THE STREET LINE. BUILDING SETBACK LINE ON THIS PLAT IS ESTABLISHED AT 25.00 FEET FROM STREET LINE.

THIS PLAT OF "COMMERCE PARK" HAS BEEN SUBMITTED TO AND APPROVED BY THE HESSTON PLANNING COMMISSION, HESSTON, KANSAS AND IS HEREBY TRANSMITTED TO THE CITY COUNCIL OF THE CITY OF HESSTON, KANSAS, WITH THE RECOMMENDATION THAT SUCH PLAT BE APPROVED AS PROPOSED.

DATED THIS 7<sup>th</sup> DAY OF February, 1985.

*John Shewalter* CHAIRMAN      *Margie Bowers* SECRETARY

THE DEDICATIONS SHOWN ON THIS PLAT ARE HEREBY ACCEPTED AND THIS PLAT IS HEREBY APPROVED BY THE CITY COUNCIL OF THE CITY OF HESSTON, KANSAS THIS 11<sup>th</sup> DAY OF February, 1985.

*Joseph Anderson* MAYOR      *Jean Krehbiel* CITY CLERK

**DEDICATION:**

THE UNDERSIGNED, LOWELL L. ROTH AND CYNTHIA S. ROTH, HUSBAND AND WIFE, WILLIAM E. MCGHEE AND LORETTA S. MCGHEE, HUSBAND AND WIFE, VERLYN D. UHRIG AND SANDRA L. UHRIG, HUSBAND AND WIFE, JAMES A. BLOUGH AND MARVA J. BLOUGH, HUSBAND AND WIFE; AND JERRY KENNEL AND JUDI KENNEL, PRESIDENT AND SECRETARY RESPECTIVELY OF WENZ AND KENNEL SERVICE COMPANY, INC., A KANSAS CORPORATION, ACTING ON BEHALF OF SAID CORPORATION, DO HEREBY CERTIFY THAT THEY ARE THE OWNERS OF THE PROPERTY DESCRIBED HEREON AND HAVE SUBDIVIDED THE SAME INTO LOTS IN THE MANNER SHOWN ON THE ACCOMPANYING PLAT. SAID SUBDIVISION SHALL BE KNOWN AS "COMMERCE PARK", A SUBDIVISION IN THE SOUTHWEST QUARTER OF SECTION 15, TOWNSHIP 22 SOUTH, RANGE 1 WEST OF THE 6TH PRINCIPAL MERIDIAN IN HARVEY COUNTY, KANSAS.

<i>Lowell L. Roth</i> LOWELL L. ROTH	<i>Cynthia S. Roth</i> CYNTHIA S. ROTH
<i>William E. McGhee</i> WILLIAM E. MCGHEE	<i>Loretta S. McGhee</i> LORETTA S. MCGHEE
<i>Verlyn D. Uhrig</i> VERLYN D. UHRIG	<i>Sandra L. Uhrig</i> SANDRA L. UHRIG
<i>James A. Blough</i> JAMES A. BLOUGH	<i>Marva J. Blough</i> MARVA J. BLOUGH
<i>Jerry Kennel</i> JERRY KENNEL - PRESIDENT	<i>Judi Kennel</i> JUDI KENNEL, SECRETARY
WENZ-KENNEL SERVICE CO., INC.	WENZ-KENNEL SERVICE CO., INC.

STATE OF KANSAS, SS  
COUNTY OF HARVEY

THE FOREGOING INSTRUMENT WAS ACKNOWLEDGED BEFORE MY THIS 11<sup>th</sup> DAY OF February, 1985 BY LOWELL L. ROTH, CYNTHIA S. ROTH, WILLIAM E. MCGHEE, LORETTA S. MCGHEE, VERLYN D. UHRIG, SANDRA L. UHRIG, JAMES A. BLOUGH, MARVA J. BLOUGH, AND BY JERRY KENNEL, PRESIDENT AND JUDI KENNEL, SECRETARY OF WENZ AND KENNEL SERVICE COMPANY, INC., A KANSAS CORPORATION, ON BEHALF OF SAID CORPORATION.

*Margie R. Boutwell*  
MARGIE R. BOUTWELL  
STATEWIDE  
NOTARY PUBLIC  
Harvey County, Kansas  
My Appt. Exp. 5-12-87

*Margie R. Boutwell*  
MARGIE R. BOUTWELL  
NOTARY PUBLIC

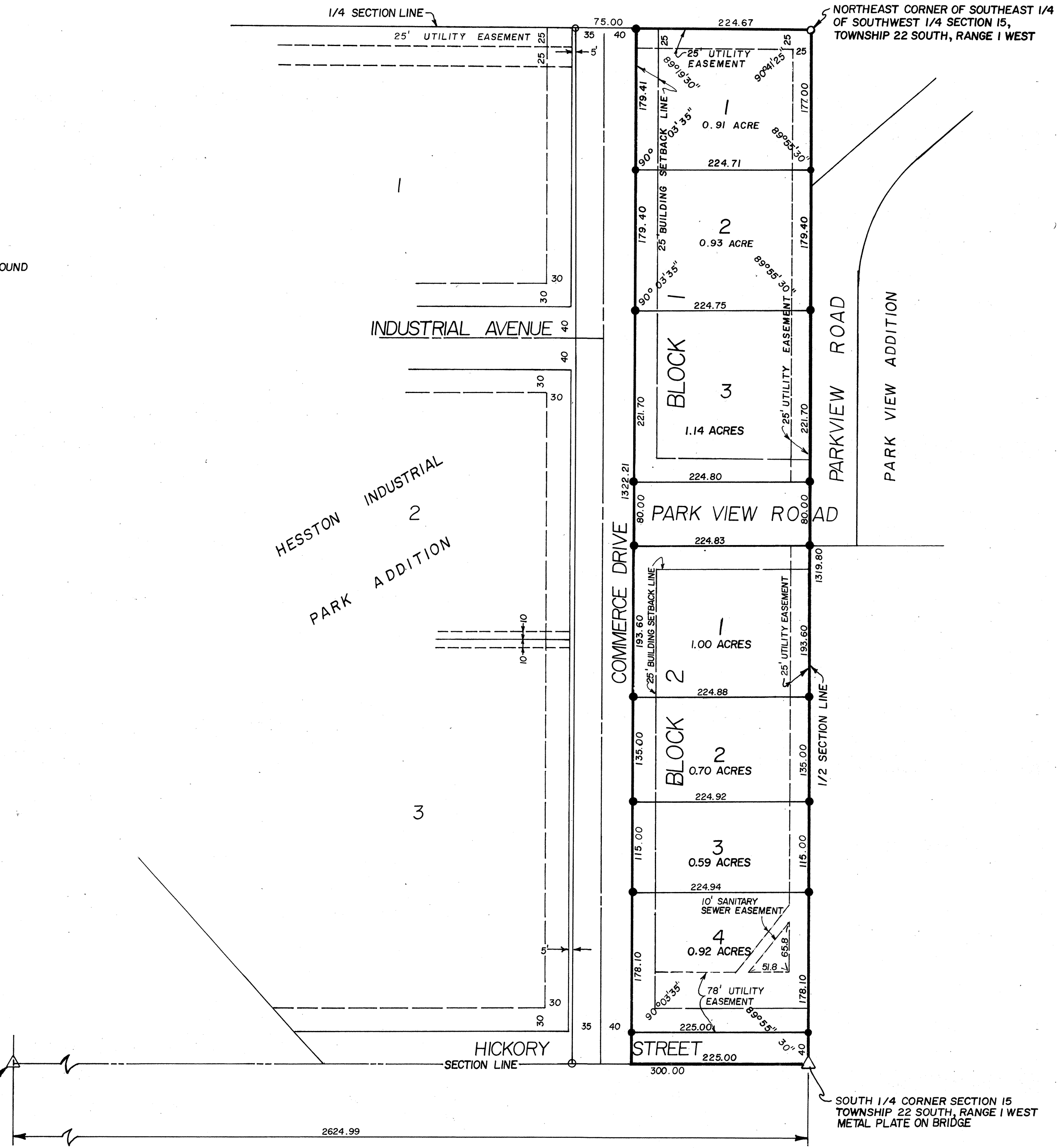
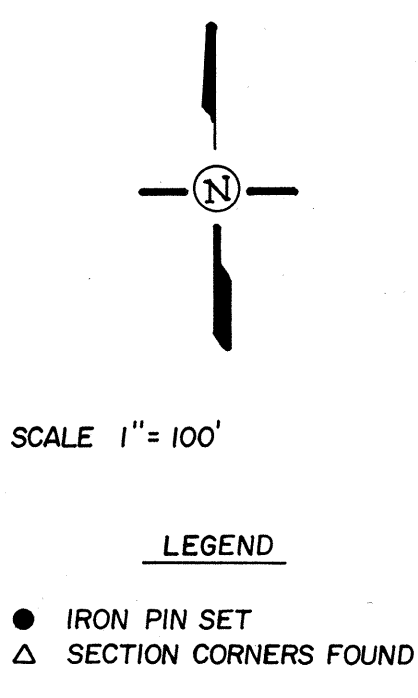
STATE OF KANSAS, SS 001154      Book 305 PAGE 302  
COUNTY OF HARVEY

THIS IS TO CERTIFY THAT THIS INSTRUMENT WAS FILED FOR RECORD IN THE REGISTER OF DEEDS OFFICE ON THE 29<sup>th</sup> DAY OF APRIL, 1985 AT 3:24 AND IS DULY RECORDED.

*John A. Hay* REGISTER OF DEEDS      *Harold A. Rowland* DEPUTY

ENTERED ON TRANSFER RECORD THIS 29<sup>th</sup> DAY OF April, 1985.

*Margaret Wright*  
MARGARET WRIGHT  
COUNTY CLERK



PREPARED FOR LOWELL ROTH	
By: GARBER SURVEYING SERVICE, PA. 217 EAST FIRST AVENUE SUITE 16 HUTCHINSON, KANSAS 67501 PHONE 316-665-7032	
DRAWN BY RON OWEN	DATE 12-28-84
SCALE 1" = 100'	G-84-336

BOOK 299-283