

# HESSTON INDUSTRIAL PARK ADDITION

## TO THE CITY OF HESSTON, KANSAS

**LEGEND**

- IRON PIN
- ① BLOCK NO.
- 2 LOT NO.
- LOT LINE
- - - EASEMENT LINE
- BUILDING SETBACK

SCALE 1" = 100'

STATE OF KANSAS  
COUNTY OF HARVEY  
Entered on the Transfer Record this 26th day of July, 1971  
*Ray Grochowski*  
County Clerk (Seal)

STATE OF KANSAS  
COUNTY OF HARVEY  
Approved by the Board of County Commissioners of Harvey County, Kansas on this 26 day of July, 1971.  
*Howard P. Smith*  
Chairman

STATE OF KANSAS  
COUNTY OF HARVEY  
Be it remembered that the plat of HESSTON INDUSTRIAL PARK ADDITION, City of Hesston, Harvey County, Kansas has been submitted to me and that the same is hereby approved this 26 day of July, 1971.  
*Raymond L. Spier*  
Notary City Attorney Hesston, Kansas

STATE OF KANSAS  
COUNTY OF HARVEY  
I, Galen S. Loy, Licensed Land Surveyor in said County and State, do hereby certify that I have surveyed and plotted HESSTON INDUSTRIAL PARK, City of Hesston, Harvey County, Kansas and that the accompanying is a true and correct exhibit of the property surveyed and described in the owners certificate.  
*Galen S. Loy*  
Galen S. Loy, L.S. No. 507 (Seal)

STATE OF KANSAS  
COUNTY OF HARVEY

Know all men by these presents that we, HESSTON DEVELOPMENT INC. a corporation, by its President Vernon Nikkel and its Secretary Jack Hobbs, are owners of the following described property.

A tract of land all in the South 1/2 of the Southwest 1/4 of Section 15, Township 22 South, Range 1 West, of the Sixth Principal Meridian, described as follows.

Beginning at a point 300.00 feet West of Southeast Corner of Southwest 1/4 of said Section 15; thence North 1323.17 feet along a line parallel to the 1/2 Section line; thence West along the 1/4 Section line 1520.82 feet to the East 3/4 line of the Missouri Pacific R.R.; thence Southeasterly along said 3/4 a distance of 1787.85 feet to the South line of said Section 15; thence East along said South line 318.57 feet to the point of beginning, containing 28.0 acres, more or less.

That we have caused said tract to be surveyed and platted into Lots and Blocks to be known as HESSTON INDUSTRIAL PARK ADDITION, City of Hesston, Harvey County, Kansas, for the purpose of conveying the same by numbers of Lots and a Block.

All streets and easements as shown on the accompanying plat are hereby dedicated to and for the public use and benefit.

*Jack Hobbs*  
Secretary

*Vernon Nikkel*  
President

STATE OF KANSAS  
COUNTY OF HARVEY

Be it remembered that on this 26 day of July, 1971, before me, the undersigned, a notary public in and for said County and State, came HESSTON DEVELOPMENT INC., a corporation, by its president Vernon Nikkel and its Secretary Jack Hobbs, to me personally known to be the persons who executed the foregoing instrument, and such persons duly acknowledged the execution of the same as their voluntary act and deed.

*C. J. Updegraff*  
Notary Public (Seal)

My Commission expires  
2-23-75

STATE OF KANSAS  
COUNTY OF HARVEY

We the undersigned Robert Knott and Dean Brooks chairman and secretary respectively of the Hesston Planning Commission do hereby certify that the plat of HESSTON INDUSTRIAL PARK ADDITION, to the City of Hesston, Harvey County, Kansas, was submitted at a meeting duly convened this 26 day of July, 1971. That at said meeting said Commission passed resolution approving said plat and recommended that the same be accepted and adopted by the governing body of said City as by law provided.

*Robert Knott*  
Chairman

*Dean Brooks*  
Secretary

STATE OF KANSAS  
COUNTY OF HARVEY

This plat of HESSTON INDUSTRIAL PARK, City of Hesston, Harvey County, Kansas is hereby submitted to the City Council of the City of Hesston, Kansas to be approved as proposed this 26 day of July, 1971.

*Melba R. Stovall*  
City Clerk (Seal)

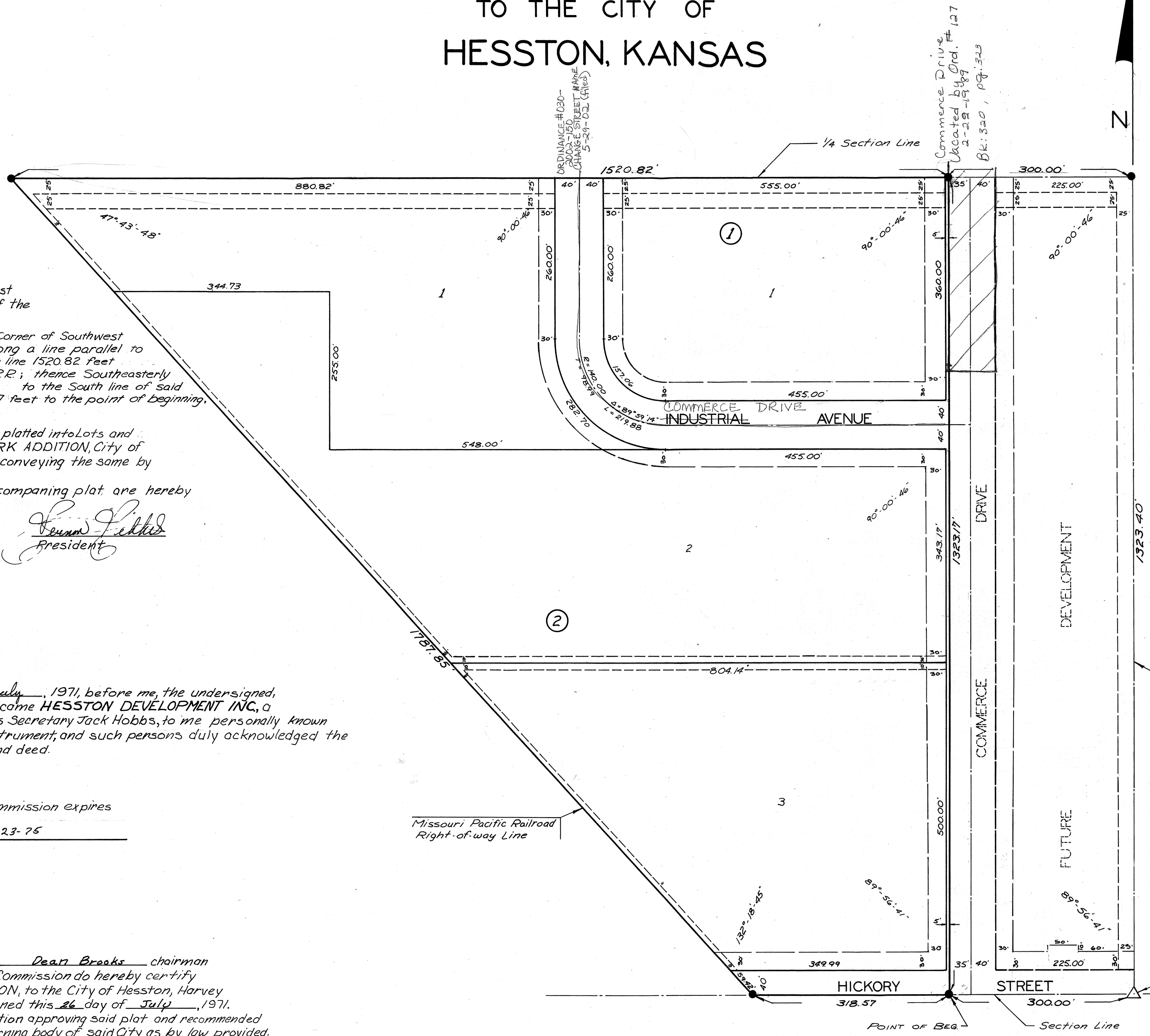
*Milton R. Diller*  
Mayor

STATE OF KANSAS  
COUNTY OF HARVEY

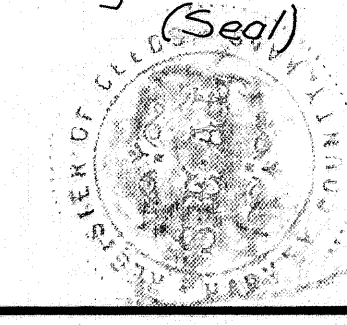
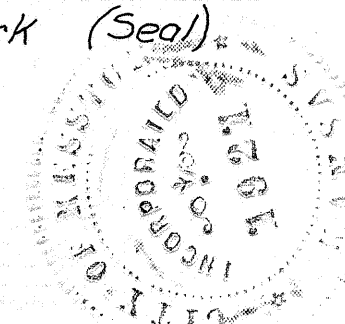
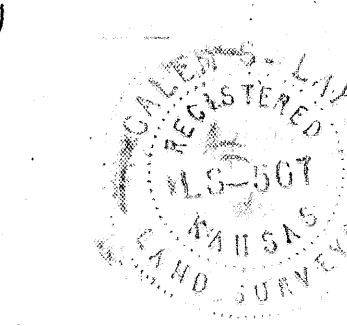
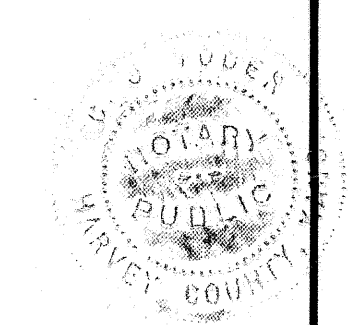
This is to certify that this instrument was filed for record in the Register of Deeds office on this 26 day of July, 1971, at 2:30 o'clock and is duly recorded in Book 260 page 30.

*Make A Perkins Deputy*  
Register of Deeds (Seal)

Error of Closure =  $\frac{\sqrt{(0.048)^2 + (0.007)^2}}{4,950.41}$   
=  $\frac{.21}{4,950.41}$   
=  $\frac{1}{23,573}$



Book 2 pg 176



HESSTON DEVELOPMENT INC.  
BOX 665  
HESSTON, KANSAS

CENTRAL SURVEYING & MAPPING  
BOX 392  
HESSTON, KANSAS  
PH. 316-327-2200

176  
BK2

176