

HESSTON PROFESSIONAL PARK

FINAL PLAT

A SUBDIVISION OF A PORTION OF THE SOUTHWEST QUARTER OF SECTION 15,
TOWNSHIP 22 SOUTH, RANGE 1 WEST OF THE 6TH PRINCIPAL MERIDIAN,
IN HESSTON, HARVEY COUNTY, KANSAS.

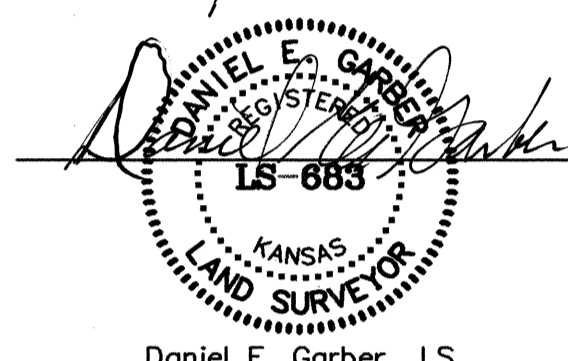
DESCRIPTION:

A portion of the Southwest Quarter of Section 15, Township 22 South, Range 1 West of the 6th Principal Meridian, Harvey County, Kansas described as follows:

Commencing at the Northwest corner of said Southwest Quarter; thence South 89°55'25" East (basis of bearings is assumed) along the North line of said Southwest Quarter 1405.00 feet for the point of beginning; thence continuing South 89°55'25" East along the North line of said Southwest Quarter 110.45 feet to the West line of Industrial Avenue as platted in the City of Hesston; thence South 36°02'10" East along the West line of said Industrial Avenue 150.93 feet; thence South 54°00'00" West 353.68 feet; thence South 88°46'57" West 295.00 feet; thence North 01°48'55" West 236.99 feet to the South right-of-way line of Randall Street; thence South 89°55'25" East along the South right-of-way line of said street 3.73 feet; thence South 86°48'25" East along said right-of-way 37.00 feet; thence following the arc of a curve to the left along said right-of-way 365.67 feet, (radius 898.51 feet, a chord bearing North 73°45'42" East a distance of 363.15 feet) to the point of beginning, containing **3.051 Acres**, subject to any easements of record.

SURVEYOR'S CERTIFICATE:

The undersigned does hereby certify this plat to be a true, correct and complete representation of the property described above and that all block corners, subdivision corners and curve points have been established with permanent markers as shown hereon, this 23rd day of April, 2002.



Daniel E. Garber LS

EASEMENTS:

Easements shown by dashed lines on the accompanying plat are hereby dedicated for public use and may be employed as a covenant running with the land for the purpose of installing, repairing, re-installing, replacing, and maintaining sewers, water lines, gas lines, electric lines and poles, telephone lines and poles and other forms and types of public utilities now or hereafter generally utilized by the public.

BUILDING SETBACK LINES:

Building lines or setback lines are hereby established as shown on the accompanying plat and no building or portion thereof shall be built or constructed between this line and the street line.

DEDICATION:

The undersigned, Paul Mullet and Robert Mullet, President and Secretary respectively of Excel Industries Inc., do hereby certify that said corporation is the owner of the property described hereon and has subdivided the same into lots in the manner shown on the accompanying plat. Said subdivision shall be known as "HESSTON PROFESSIONAL PARK", a subdivision of a portion of the Southwest Quarter of Section 15, Township 22 South, Range 1 West of the 6th Principal Meridian, in Hesston, Harvey County, Kansas.

Paul Mullet
Paul Mullet, President
Excel Industries Inc.

Robert Mullet
Robert Mullet, Secretary
Excel Industries Inc.

STATE OF KANSAS }
COUNTY OF HARVEY } SS

Be it remembered that on this 15th day of May, 2002, before me a notary public in and for said County and State, came Paul Mullet and Robert Mullet, President and Secretary respectively of Excel Industries Inc., who executed the foregoing instrument of writing on behalf of said corporation and duly acknowledged the execution of the same. In testimony whereof, I have hereunto set my hand and affixed my notarial seal the day and year above written.

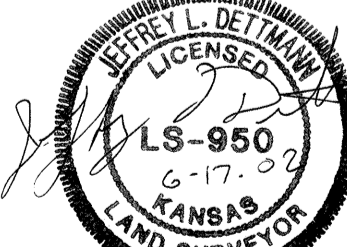
Polly A. Mains
POLLY A. MAINS
NOTARY PUBLIC
STATE OF KANSAS
My commission expires 04/29/05

Polly A. Mains
Polly A. Mains
Notary Public

REVIEW SURVEYOR'S CERTIFICATE
STATE OF KANSAS }
COUNTY OF HARVEY } SS

Reviewed in accordance with the requirements of K.S.A. 58-2005, on JUNE 17, 2002.

John L. Corder
John L. Corder
Land Surveyor



HESSTON PLANNING COMMISSION:

This plat of "HESSTON PROFESSIONAL PARK" a subdivision of a portion of the Southwest Quarter of Section 15, Township 22 South, Range 1 West of the 6th Principal Meridian, in Hesston, Harvey County, Kansas, has been submitted to and approved by the Hesston Planning Commission, Hesston, Kansas and is hereby transmitted to the City Council of this City of Hesston, Kansas with the recommendation that such plat be approved as proposed.

Ron Peters
Ron Peters, Chairman

John L. Corder
John L. Corder, Secretary

CITY COUNCIL:

The dedications shown on this plat have been accepted by the City of Hesston, Kansas, this 13th day of MAY, 2002.

John D. Waltner
John D. Waltner, Mayor

Polly A. Mains
Polly A. Mains, City Clerk

Entered on Transfer Record this 27th day of June, 2002

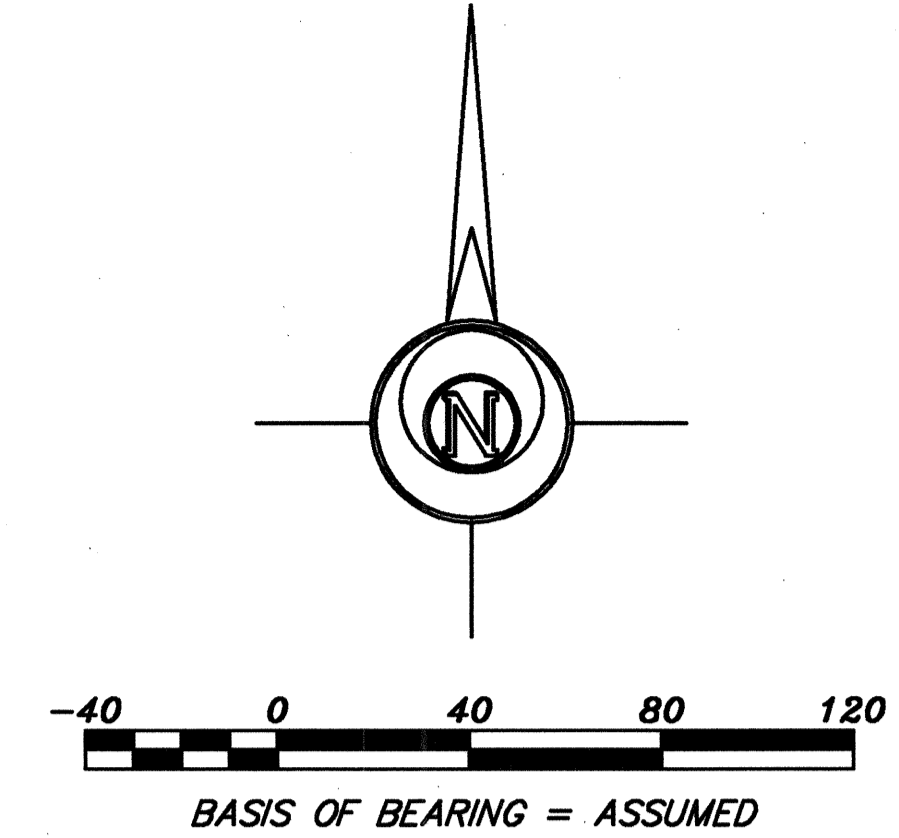
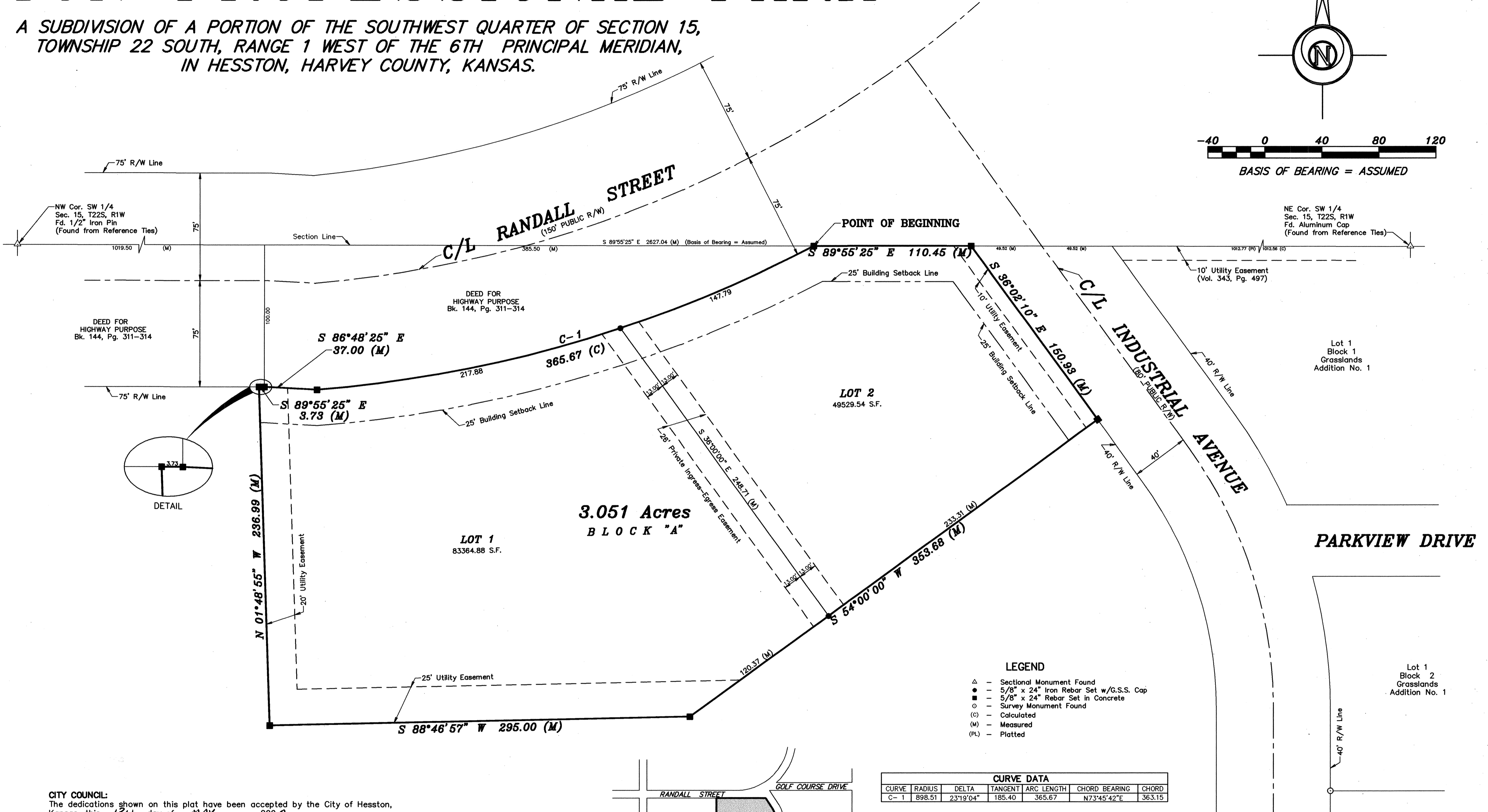
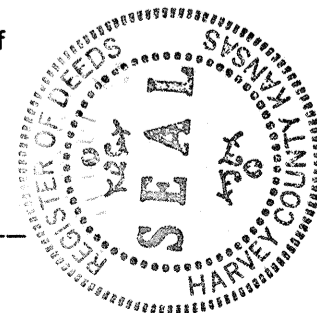
Margaret Wright
Margaret Wright, County Clerk

STATE OF KANSAS }
COUNTY OF HARVEY } SS

This is to certify that this instrument was filed for record in the Register of Deeds Office on the 27th day of June, 2002, in Misc Book 211, Page 203.

Margaret A. Hermstein
Margaret Hermstein, Register of Deeds

Michelle Schuckman
Michelle Schuckman, Deputy



LEGEND

- △ - Sectional Monument Found
- - 5/8" x 24" Iron Rebar Set w/G.S.S. Cap
- - 5/8" x 24" Rebar Set in Concrete
- - Survey Monument Found
- - Calculated
- (M) - Measured
- (PL) - Platted

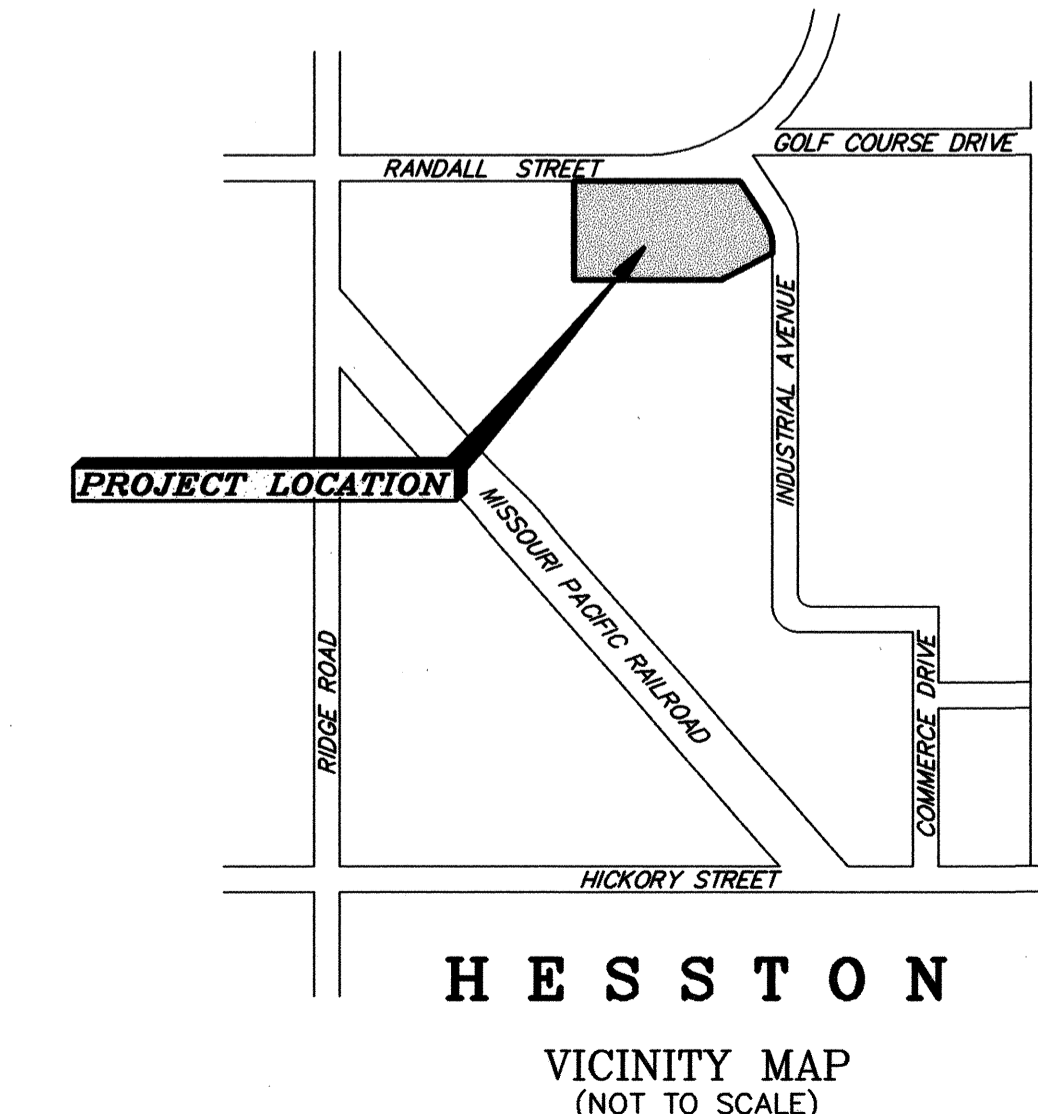
CURVE DATA

CURVE	RADIUS	DELTA	TANGENT	ARC LENGTH	CHORD BEARING	CHORD
C-1	898.51	23°19'04"	185.40	365.67	N73°45'42"E	363.15

ERROR OF CLOSURE TABLE

PLAT	Northing=0.0019	Easting=0.0029	Precision=1553.4483/0.0034=1:456896.56
------	-----------------	----------------	--

NOTE:
Section Corner ties filed with County Engineers Office and with the Kansas State Historical Society.



FINAL PLAT
Description: **HESSTON PROFESSIONAL PARK**

Prepared By: **Garber Surveying Service, P.A.**
423 West 1st Ave. Hutchinson, Kansas 67501
129 E. Broadway, Suite 300 Newton, Kansas 67114
Phone (620) 665-7032 • FAX (620) 663-7401 Phone (316) 283-5053 • FAX (316) 283-5073

Drawn By: TJK Scale: 1"=30'
Checked By: DEG Date: 04/24/2002 Sheet 1 of 1 Sheet(s) Job No: G2002-186

BOOK 2 P 9380