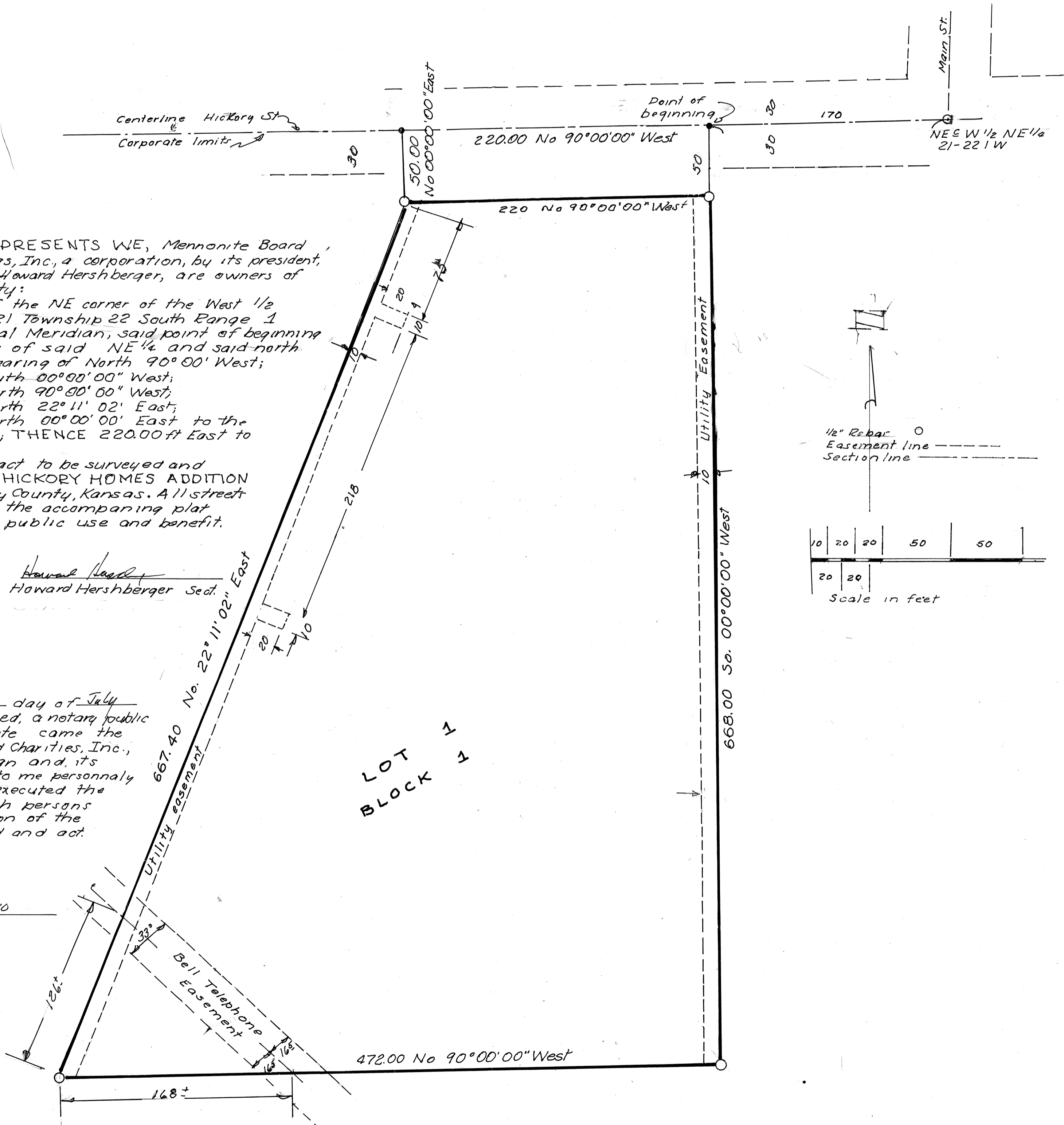


BK 2

# HICKORY HOMES ADDITION TO THE CITY OF HESSTON, KANSAS



STATE of KANSAS }  
COUNTY of HARVEY } ss

KNOW ALL MEN BY THESE PRESENTS WE, Mennonite Board of Missions and Charities of Kansas, Inc., a corporation, by its president, C.G. Stutzman, and its secretary, Howard Hershberger, are owners of the following described property:

Beginning 170 feet west of the NE corner of the West 1/2 of the NE 1/4 of Section 21 Township 22 South Range 1 west of the 6th Principal Meridian, said point of beginning being on the north line of said NE 1/4 and said north line having an assumed bearing of North 90° 00' West;  
THENCE 668.00 ft South 00° 00' 00" West;  
THENCE 472.00 ft North 90° 00' 00" West;  
THENCE 667.40 ft North 22° 11' 02" East;  
THENCE 50.00 ft North 00° 00' 00" East to the north line of said NE 1/4; THENCE 220.00 ft East to the point of beginning.

that we have caused said tract to be surveyed and platted and to be known as HICKORY HOMES ADDITION to the City of Hesston, Harvey County, Kansas. All streets and easements as shown by the accompanying plat are hereby dedicated to the public use and benefit.

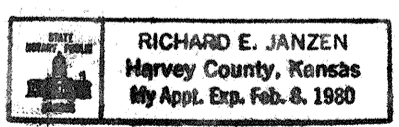
C.G. Stutzman      Howard Hershberger  
C.G. Stutzman, president      Howard Hershberger Secy

STATE of KANSAS }  
COUNTY of HARVEY }

BE IT KNOWN that on this 17 day of July 1978, before me, the undersigned, a notary public in and for said County and State came the Mennonite Board of Missions and Charities, Inc., by its president, C.G. Stutzman and its secretary, Howard Hershberger to me personally known to be the persons who executed the foregoing instrument, and such persons duly acknowledge the execution of the same as their voluntary deed and act.

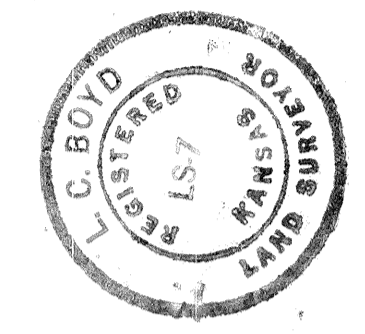
Richard E. Janzen  
Notary Public

My commission expires 2-8-80



STATE of KANSAS }  
COUNTY of HARVEY } ss

I, L.C. Boyd Registered Land Surveyor do hereby certify that to the best of my knowledge and belief the above is a true and exact plat of HICKORY HOMES ADDITION  
L.C. Boyd  
L.C. Boyd Surveyor



STATE of KANSAS }  
COUNTY of HARVEY } ss

The plat of HICKORY HOMES ADDITION has been submitted to and approved by the Hesston Regional Planning Commission this 11th day of August 1978 and is hereby recommended to the Hesston City Commission of Hesston, Kansas that said plat be approved as proposed

Robert Showalter  
Robert Showalter Chairman

Gary Burr  
Gary Burr Secretary

STATE of KANSAS }  
COUNTY of HARVEY } ss

BE IT REMEMBERED that the plat of HICKORY HOMES ADDITION to the City of Hesston, Kansas has been submitted to me and the same has been approved this 14th day of September, 1978

Richard E. Hrdlicka  
Richard E. Hrdlicka City Attorney

STATE of KANSAS }  
COUNTY of HARVEY } ss

The dedications shown on this plat are hereby accepted by the Hesston City Commission on this 16th day of August, 1978

Milton R. Miller  
Milton Miller Mayor

Jean Kreibel  
Jean Kreibel City Clerk  
Kreibel

STATE of KANSAS }  
COUNTY of HARVEY } ss

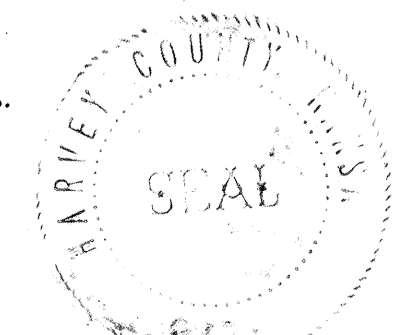
THIS IS TO CERTIFY that this instrument was filed for record in the Register of Deeds office in Volume 279 page 341 at 4:35 P.M. on the 21 day of Sept 1978 and is duly recorded.

Jack A. Hay  
Jack Hay Register of Deeds

STATE of KANSAS }  
COUNTY of HARVEY }

ENTERED on the transfer record this 21st day of Sept 1978

Margaret Wright by Rebekah Schaefer, Dep.  
Margaret Wright County Clerk



Book 2 Pg 237

BK 2