

prairie park third addition hesston, harvey county, kansas

STATE OF KANSAS
COUNTY OF HARVEY SS

I, John J. Hall, Registered Land Surveyor in said county and state hereby certify that I have surveyed and platted "PRAIRIE PARK THIRD ADDITION" Hesston, Harvey County, Kansas and the accompanying plat is a true and correct exhibit of such survey, described as follows:

The Southeast Quarter of Section 9, Township 22 South, Range 1 West of the Sixth Principal Meridian, Harvey County, Kansas, EXCEPT: "COUNTRY ACRES ADDITION"; "PRAIRIE PARK ADDITION"; "SECOND INDUSTRIAL SUBDIVISION"; "INDUSTRIAL SUBDIVISION, Lots 10, 11, 12"; including however, and being a replat of: Lots 11 through 16 inclusive, Block D, and all of Block E in "PRAIRIE PARK ADDITION".

The same being more particularly described as follows:

BEGINNING at the Northeast corner of the Southeast Quarter of Section 9, Township 22 South, Range 1 West of the Sixth Principal Meridian, Harvey County, Kansas;

Thence South on the East line of said Quarter Section a distance of 1894.32 feet, more or less, to the North line of "COUNTRY ACRES ADDITION";

Thence West on said North line, the same being the South line of "PRAIRIE PARK ADDITION", a distance of 325.62 feet to the Southeast corner of Lot 10, Block D, "PRAIRIE PARK ADDITION";

Thence Northerly along the Easterly lines of Lots 1 through 10 inclusive in Block D "PRAIRIE PARK ADDITION" to the Northeast corner of Lot 1, Block D in said addition;

Thence Southwesterly to the Northwest corner of Lot 2, Block B, in said addition, a distance field measured of 386.30 feet;

Thence Southwesterly to the Northeast corner of Lot 7, Block A, in said addition, a distance field measured of 297.52 feet;

Thence Southwesterly to a rear corner of Lot 3, Block A, in said addition, a distance field measured of 420.8 feet;

Thence Southwesterly on the rear line of Lots 2 and 3, Block A, in said addition, a distance field measured of 148.05 feet;

Thence South to the Southwest corner of Lot 1, Block A, in said "PRAIRIE PARK ADDITION" and the North line of "COUNTRY ACRES ADDITION";

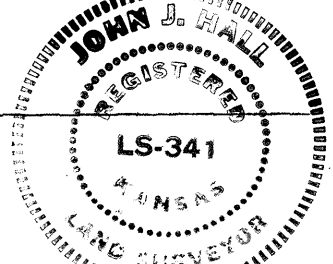
Thence West on said North line of said "COUNTRY ACRES ADDITION" a distance of 330.12 feet to the East line of "INDUSTRIAL SUBDIVISION, Lots 10, 11, 12";

Thence North on said East line a distance of 568 feet to the Northeast corner of Lot 12 in said subdivision and the South line of "SECOND INDUSTRIAL SUBDIVISION";

Thence East on said South line a distance of 669.13 feet to the Southeast corner of said subdivision, said corner being the Southwest corner of the Northeast Quarter of said Southeast Quarter Section;

Thence North on the East line of said subdivision a distance of 1317.0 feet to the Northeast corner of said subdivision and the Northwest corner of said Northeast Quarter Section;

Thence East a distance of 1333.48 feet to the POINT OF BEGINNING.

 *John J. Hall*
John J. Hall LS #341

STATE OF KANSAS
COUNTY OF HARVEY SS

Know all men by these presents that we the undersigned owners of the land described in the surveyor's certificate have caused the same to be surveyed and platted into Lots, Blocks, and Streets to be known as "PRAIRIE PARK THIRD ADDITION". Utility easements as shown on the plat are hereby granted for the construction and maintenance of all public utilities and for drainage purposes. The streets not heretofore dedicated are hereby dedicated to and for the use of the public.

Raymond C. Schlichting Raymond C. Schlichting
Blondine L. Schlichting Blondine L. Schlichting

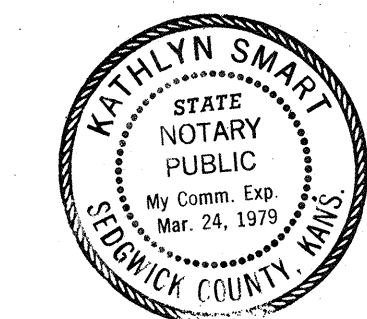
HESSTON CORPORATION

Lyle E. Yost Chairman
Melvin H. Voth Assistant Secretary

STATE OF KANSAS
COUNTY OF HARVEY SS

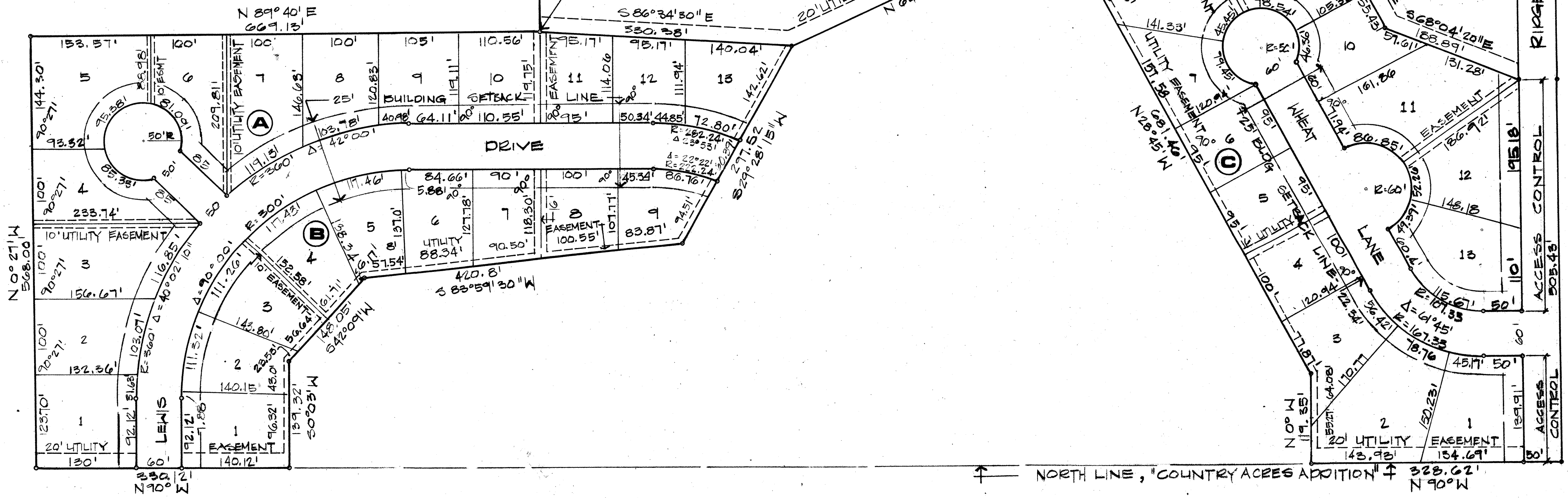
The foregoing instrument was acknowledged before me this 16th day of June, 1976 by Lyle E. Yost, Chairman and Melvin H. Voth, Assistant Secretary of "HESSTON CORPORATION" on behalf of the Corporation, and by Raymond C. Schlichting and Blondine L. Schlichting.

Kathlyn Smart Notary Public
Kathy Smart
My Commission Expires: March 24, 1979



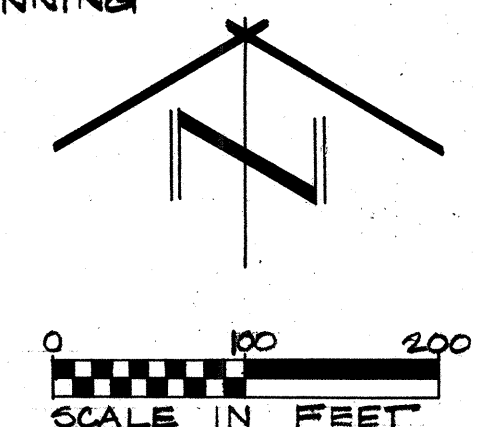
M0092301

VACATION ORDER
OVERLAPS LT 1 BLK D. PRAIRIE PARK 3RD ADD.
OCT 15, 1987. BOOK 315 PAGE 515



N 89° 41' E
124.04'

NE COR. SE 1/4 SEC. 9,
T22S, R1W, 6TH PM.
POINT OF BEGINNING



This plat of "PRAIRIE PARK THIRD ADDITION" has been submitted to and approved by the HESSTON PLANNING COMMISSION, Hesston, Kansas, and is hereby transmitted to the City Council of the City of Hesston, Kansas, with the recommendation that such plat be approved as proposed. Dated this 24th day of May, 1976.

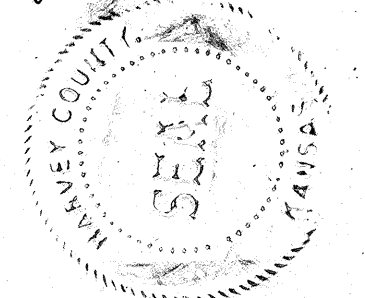
HESSTON PLANNING COMMISSION
Robt. Showalter Chairman
Gary Burr Secretary

STATE OF KANSAS
COUNTY OF HARVEY SS
Be it remembered that the plat of "PRAIRIE PARK THIRD ADDITION", Hesston, Harvey County, Kansas has been submitted to me and that the same is hereby approved this 9th day of June, 1976.
Richard F. Hrdlicka City Attorney
Hesston, Kansas

The dedications shown on this plat are hereby accepted by the City Council this 16th day of June, 1976.

HESSTON CITY COUNCIL
Milton Miller Mayor
Luella Schmidt City Clerk

STATE OF KANSAS
COUNTY OF HARVEY SS
This is to certify that this instrument was filed for record in the Register of Deeds Office on the 25 day of June, 1976 at 8AM o'clock, and is duly recorded in Book 270, at Page 891.
Jack A. Hay Register of Deeds
Entered on transfer record this 25 day of June, 1976.
Virginia McCune County Clerk



BOOK 2 P 915 8 A

BK 2
158-A

BK 2
158-A