

RAZOOK ADDITION NO. ONE  
HESSTON, KANSAS

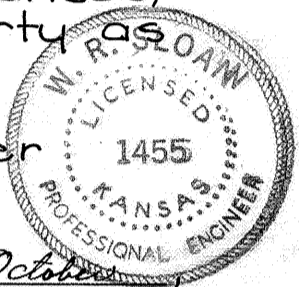
BOOK 2 PG 136

State of Kansas)ss  
County of Harvey) Know all men by these presents that we, Robert J. and Betty L. Razook, are the owners of the following described property: Beginning at a point 857 feet south of the NW corner of the SW 1/4 of Section 15, Township 22 South, Range 1 West of the 6th Principal Meridian; thence South 227 feet along the West line of said SW 1/4, thence east at 90° angle 309 feet to the SW right of way line of U.S. Highway 81; thence northwesterly 299 feet; thence West 108 feet to the place of beginning. Containing 1.088 acres, including 0.182 acres of Public Right of Way; and that we have caused said tract to be surveyed and platted into Lots and Blocks to be known as "Razook Addition No. One," City of Hesston, Harvey County, Kansas, for the purposes of conveying the same by numbers of Lots and Blocks.

*Robert J. Razook*  
*Betty L. Razook*

State of Kansas)ss  
County of Harvey) I, W. R. Sloan, Civil Engineer in said County and State, do hereby certify that I have surveyed and have caused to be platted "Razook Addition No. One," Hesston, Harvey County, Kansas, and that the plat is a true and correct exhibit of the property surveyed and described in the owners certificate.

*W. R. Sloan* Civil Engineer



State of Kansas)ss  
County of Harvey) Be it remembered that on this 9th day of October, 1964, before me, a Notary Public in and for said County and State, came Robert J. and Betty L. Razook, to me personally known to be the same persons who executed the foregoing instrument, and such persons duly acknowledged the execution of the same as their voluntary act and deed. My Commission expires: September 23, 1965.

*William L. Yo* Notary Public

State of Kansas)ss  
County of Harvey) We the undersigned *Raymond E. King* and *Leland A. Bachman* Chairman and Secretary respectively of the Planning Commission of the City of Hesston, Kansas, do hereby certify that the plat of "Razook Addition No. One," City of Hesston, Harvey County, Kansas, was submitted at a meeting duly convened this 27th day of September, 1964. That at said meeting the said Commission passed a resolution approving said plat and recommended that the same be accepted and adopted by the governing body of said City, as by law provided as an addition to the City of Hesston, Kansas.

*Leland A. Bachman* Secretary

*Raymond E. King* Chairman

State of Kansas)ss  
County of Harvey) Approved by the City Council of the City of Hesston, Kansas, this 2nd day of October, 1964.

*Libby Buller* Clerk

*Milton K. Miller* Mayor

State of Kansas)ss  
County of Harvey) Be it remembered that the plat of "Razook Addition No. One," City of Hesston, Harvey County, Kansas, has been submitted to me and that the same is hereby approved this 18th day of October, 1964.

*John H. Miller* City Attorney

State of Kansas)ss  
County of Harvey) Approved by the Board of County Commissioners of Harvey County, Kansas this 27th day of October, 1964.

*Clarence J. Ferguson* Chairman

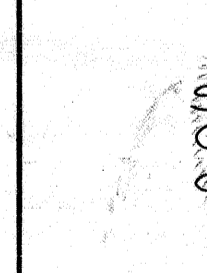
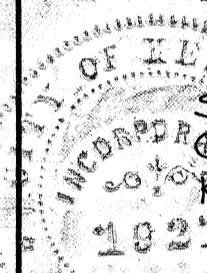
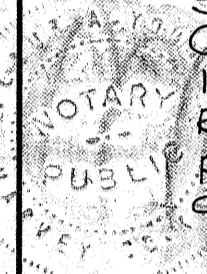
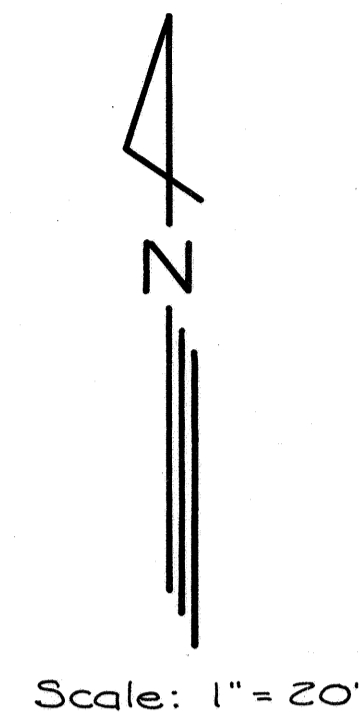
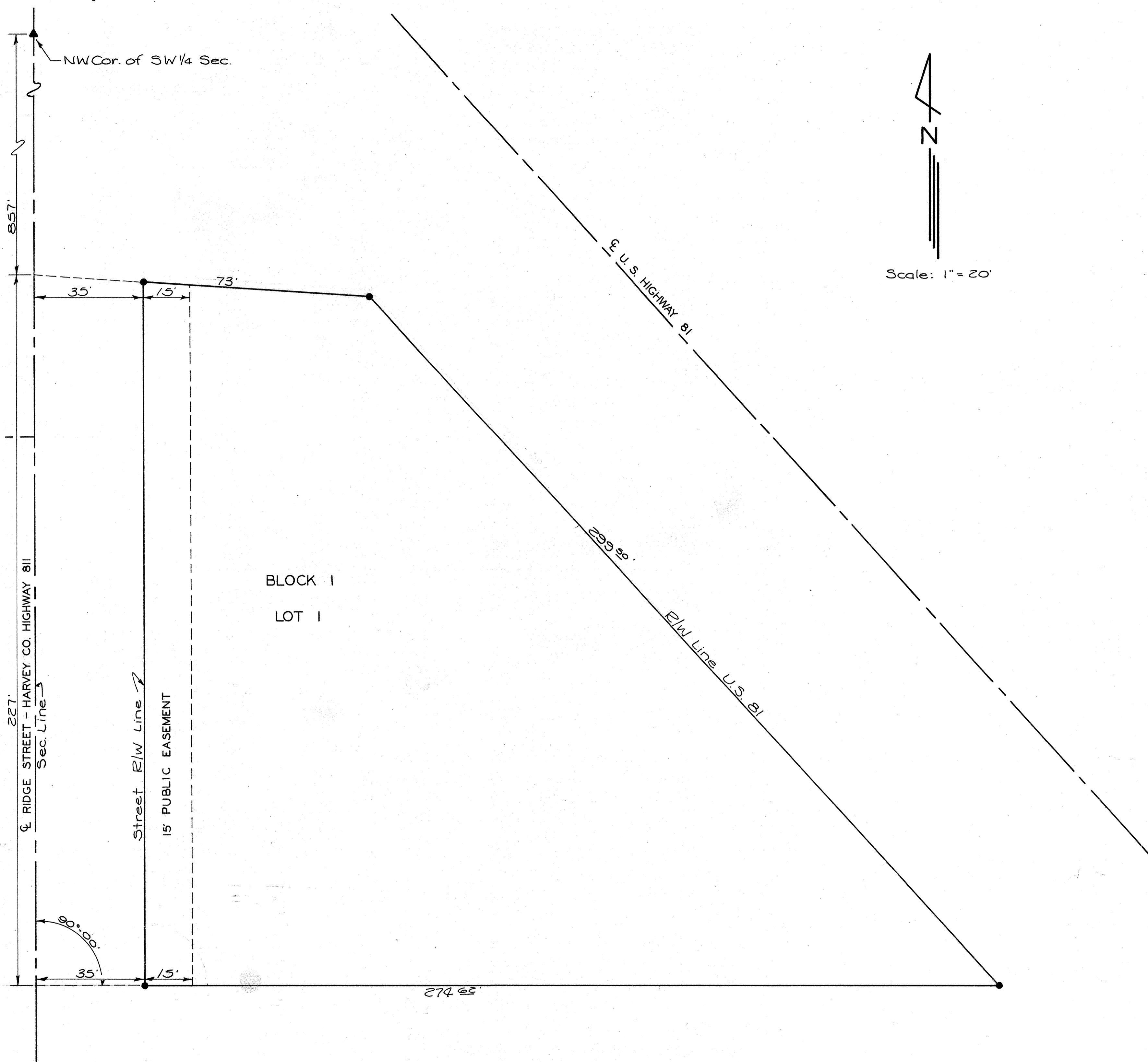
State of Kansas)ss  
County of Harvey) Entered on the Transfer Record this 21st day of October, 1964.

*Wanda S. Benedict* County Clerk

State of Kansas)ss  
County of Harvey) This is to certify that this instrument was filed for record in the Register of Deeds office on this 28th day of October, 1964, at 1:30 o'clock and is duly recorded in Book 272 page 1314.

*Hannutha A. Shepler* Register of Deeds

18951



PK 2  
136