

# SCHOOL ADDITION

## HESSTON KANSAS

STATE of KANSAS } ss  
 COUNTY of HARVEY }

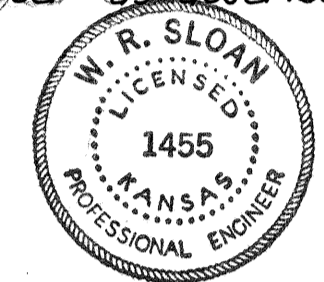
Approved by the City Planning Commission of the City of Hesston Kansas this 3rd day of August 1964

Raymond King Chairman  
Edward Beckman Secretary

STATE of KANSAS } ss  
 COUNTY of HARVEY }

I, W. R. Sloan, County Surveyor in and for said county and state do hereby certify that I have caused to be surveyed and platted SCHOOL ADDITION to the City of Hesston, Kansas and that the accompanying plat is a true and correct exhibit of the property as surveyed as described in the owners certificate.

W. R. Sloan  
 County Surveyor



STATE of KANSAS } ss  
 COUNTY of HARVEY }

Approved by the Board of County Commissioners of Harvey County this 4th day of August 1964.

Clayton Pappeman  
 Chairman

STATE of KANSAS } ss  
 COUNTY of HARVEY }

BE IT KNOWN that the plat of SCHOOL ADDITION to the City of Hesston Kansas has been submitted to me and that the same is hereby approved this 4th day of August 1964.

Edward Miller  
 City Attorney of Hesston, Kansas

STATE of KANSAS } ss  
 COUNTY of HARVEY }

Approved by the City Council of the City of Hesston, Kansas this 3rd day of August 1964

Milton R. Miller Mayor  
Earl Buller City Clerk

STATE of KANSAS } ss  
 COUNTY of HARVEY }

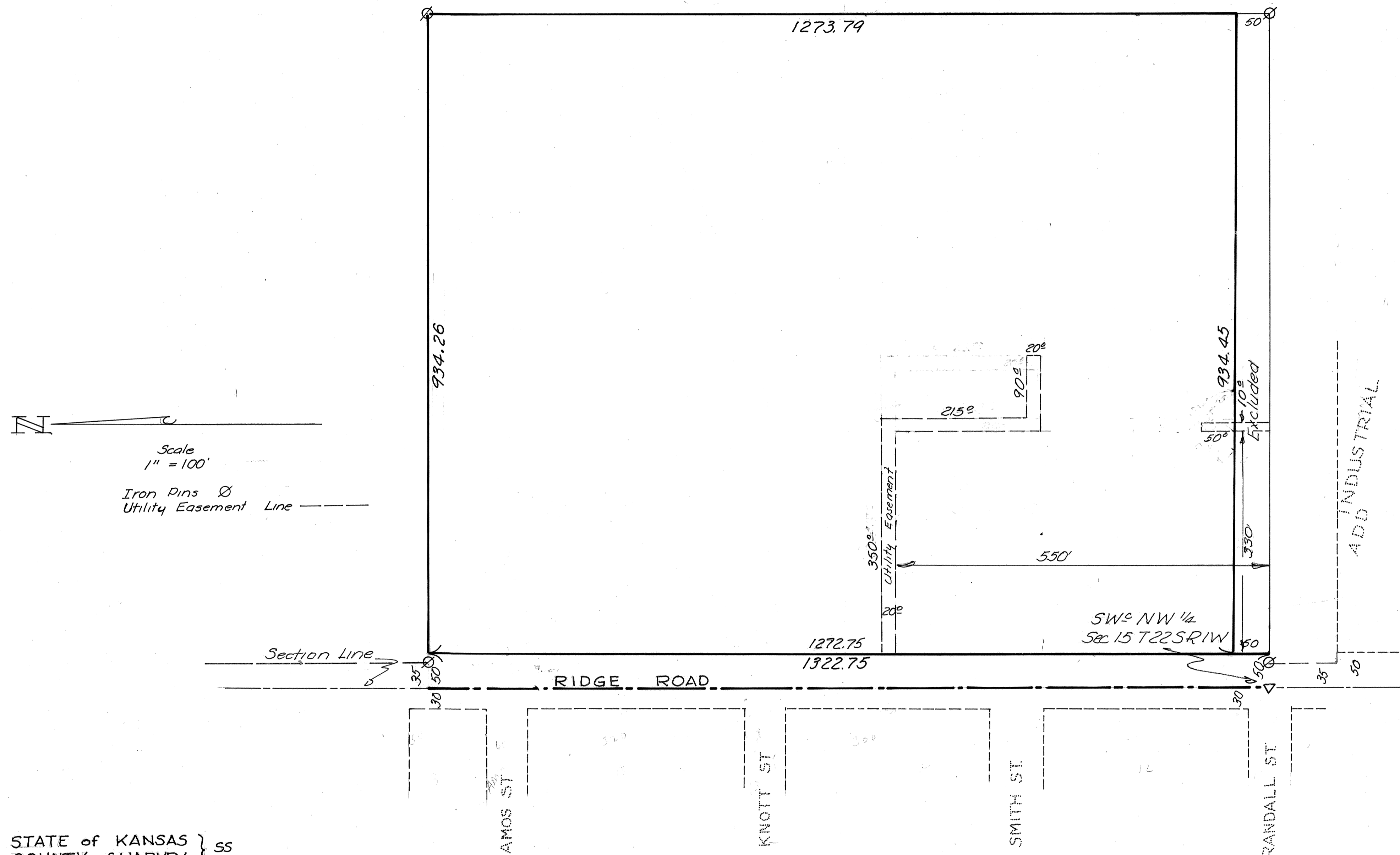
Entered on the Transfer Record this 10th day of August 1964

Shanda H. Benedict  
 County Clerk

STATE of KANSAS } ss  
 COUNTY of HARVEY } 18188

THIS IS TO CERTIFY, this instrument was filed for record in the Register of Deeds Office this 10 day of August 1964 at 3 P.M. o'clock and is duly recorded in Volume 241 Pages 145-146

Kenneth A. Shupler  
 Register of Deeds



STATE of KANSAS } ss  
 COUNTY of HARVEY }

KNOW ALL MEN BY THESE PRESENTS, that the Hesston Kansas Board of Education do hereby certify that it is the owner of the following described property:  
 The South one half (1/2) of the West three quarters (3/4) of the West one half (1/2) of the Northwest one quarter (1/4) of Section fifteen (15) Township twenty-two (22), Range one (1) West of the Sixth (6th) Principal Meridian.

and that it has caused above described tract to be divided into blocks and lots and streets and alleys of location and dimensions as shown by the accompanying plat for the purpose of recording and conveying same by number of blocks and lots as shown by the aforesaid plat.

The streets, alleys and easements are hereby dedicated to the public use and benefit.

HESSTON BOARD of EDUCATION

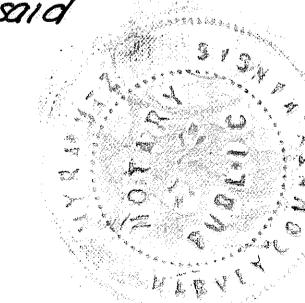
Robert Knott  
 Chairman

Allen S. Diller  
 Secretary

STATE of KANSAS } ss  
 COUNTY of HARVEY }

BE IT REMEMBERED, that on this 3rd day of August 1964 before me a notary public in and for said county came Robert Knott Chairman and Allen S. Diller Secretary of the Hesston Board of Education City of Hesston, Kansas, personally known to me to be the same persons who executed the foregoing instrument for and on behalf of said Board and said officers did acknowledge the execution thereof and to be the act and deed of said Board.

Margaret Utz  
 Notary Public  
 My Commission expires MARCH 15, 66



Book 2 Pg 134