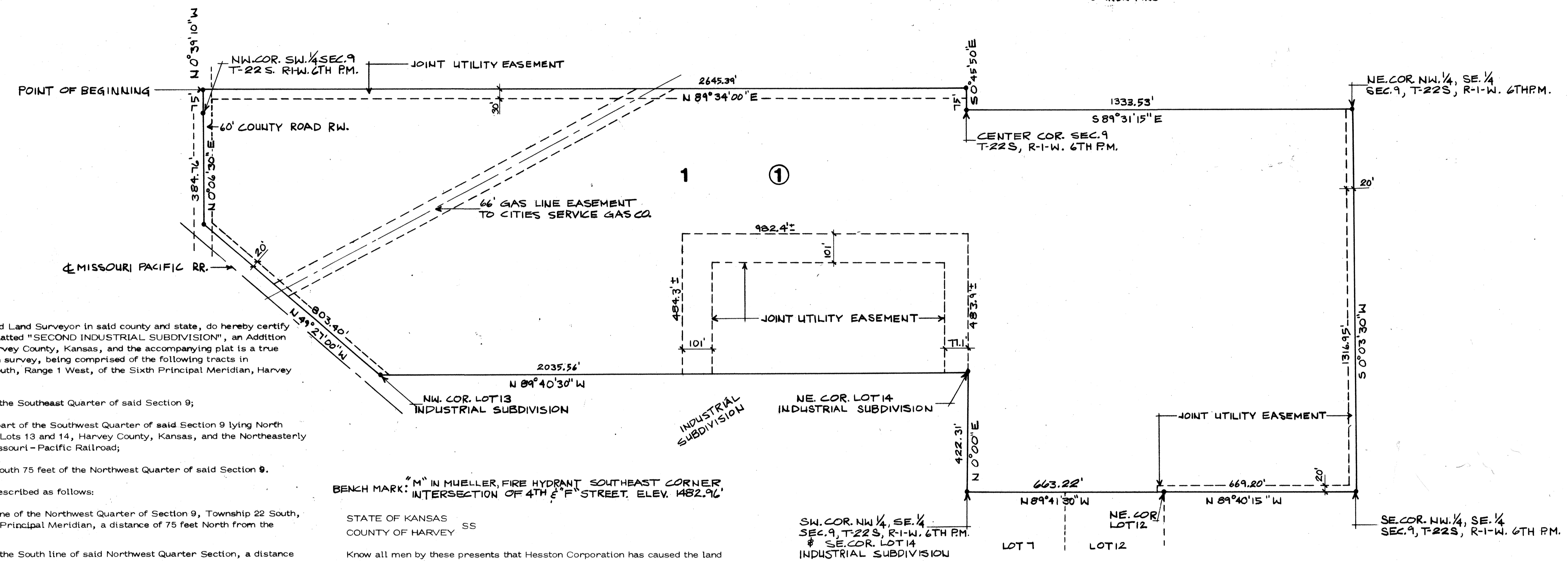
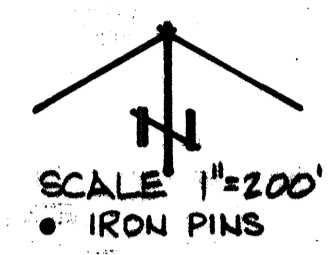


second industrial subdivision

hesston, harvey county, kansas



STATE OF KANSAS
COUNTY OF HARVEY SS

I, John J. Hall, Registered Land Surveyor in said county and state, do hereby certify that I have surveyed and platted "SECOND INDUSTRIAL SUBDIVISION", an Addition to the City of Hesston, Harvey County, Kansas, and the accompanying plat is a true and correct exhibit of such survey, being comprised of the following tracts in Section 9, Township 22 South, Range 1 West, of the Sixth Principal Meridian, Harvey County, Kansas:

The Northwest Quarter of the Southeast Quarter of said Section 9;

TOGETHER WITH: That part of the Southwest Quarter of said Section 9 lying North of Industrial Subdivision, Lots 13 and 14, Harvey County, Kansas, and the Northeastly right of way line of the Missouri-Pacific Railroad;

TOGETHER WITH: The South 75 feet of the Northwest Quarter of said Section 9.

Being more particularly described as follows:

BEGINNING on the West line of the Northwest Quarter of Section 9, Township 22 South, Range 1 West of the Sixth Principal Meridian, a distance of 75 feet North from the Southwest Corner thereof;

Thence East parallel with the South line of said Northwest Quarter Section, a distance of 2645.39 feet to the East line of said Northwest Quarter Section;

Thence South on said East line 75 feet to the Center Quarter Corner of said Section 9;

Thence East on the North line of the Northwest Quarter of the Southeast Quarter of said Section 9, a distance of 1333.53 feet to the Northeast Corner of said Quarter Quarter;

Thence South on the East line of said Quarter Quarter, a distance of 1316.95 feet to the Southeast Corner thereof;

Thence West on the South line of said Quarter Quarter, a distance of 669.20 feet to the Northeast Corner of Lot 12, Industrial Subdivision, Harvey County, Kansas, filed September 12, 1963 in Book 233, Pages 485 and 486, Register of Deeds;

Thence West on the North line of said Subdivision, a distance of 663.22 feet to the Southeast Corner of Lot 14, Industrial Subdivision, Lots 13 and 14, Harvey County, Kansas, filed September 13, 1965 in Book 245, Pages 17 and 18, Register of Deeds;

Thence North on the East line of said Subdivision, a distance of 422.31 feet to the Northeast Corner of said Lot 14;

Thence West on the North line of said Subdivision, a distance of 2035.56 feet to the intersection with the Northeastly Right of Way line of the Missouri-Pacific Railroad;

Thence Northwesterly on said Right of Way line, a distance of 803.4 feet to the intersection with the West line of the Southwest Quarter of said Section 9;

Thence North on the West line of said Quarter Section, a distance of 384.76 feet to the Southwest Corner of the Northwest Quarter of said Section 9;

Thence North on the West line of said Northwest Quarter Section, a distance of 75 feet to the POINT OF BEGINNING. Said tract contains 96.0 acres, more or less.

BENCH MARK: "M" IN MUELLER, FIRE HYDRANT SOUTHEAST CORNER INTERSECTION OF 4TH & F STREET. ELEV. 1482.96'

STATE OF KANSAS
COUNTY OF HARVEY SS

Know all men by these presents that Hesston Corporation has caused the land described in the Surveyor's Certificate to be platted into a Block and Lot to be known as "SECOND INDUSTRIAL SUBDIVISION", an Addition to the City of Hesston, Harvey County, Kansas.

Utility easements as shown on the plat are hereby granted for the construction and maintenance of all public utilities.

HESSSTON CORPORATION
Lyle E. Yost Chairman
Melvin H. Voth Assistant Secretary

STATE OF KANSAS
COUNTY OF HARVEY SS
The foregoing instrument was acknowledged before me this 30th day of June, 1975, by Lyle E. Yost, Chairman, and Melvin H. Voth, Assistant Secretary, of Hesston Corporation, a Kansas Corporation, on behalf of the Corporation.
March 24, 1979
My Commission Expires
Kathlyn Smart
Notary Public
Mar. 24, 1979

STATE OF KANSAS
COUNTY OF HARVEY SS
Be it remembered that the plat of "SECOND INDUSTRIAL SUBDIVISION", an Addition to the City of Hesston, Harvey County, Kansas, has been submitted to me and that the same is hereby approved this 30th day of June, 1975.
Richard F. Hrdlicka
City Attorney, Hesston, Kansas

STATE OF KANSAS
COUNTY OF HARVEY SS 54710

This is to certify that this instrument was filed for record in the Register of Deeds Office on the 16 day of July, 1975, at 8 AM, and is duly recorded.
Book 267 PAGE 873

Jack A. Hay Register of Deeds
Deputy

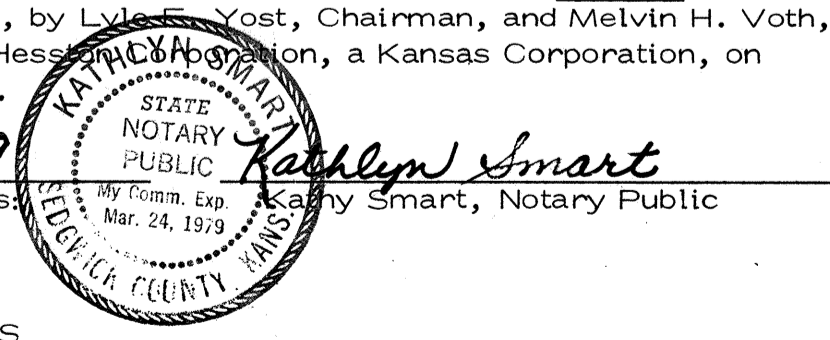
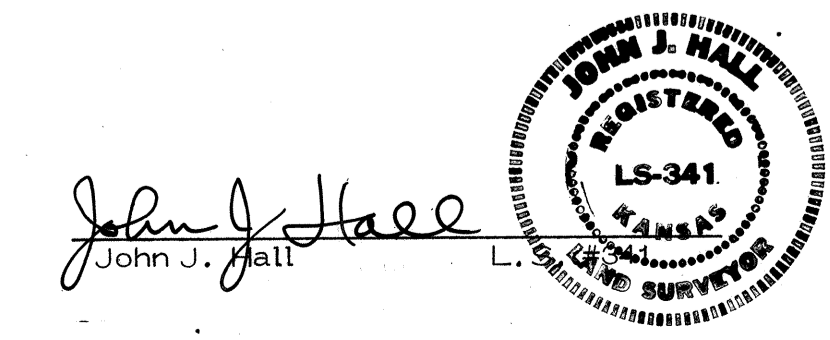
Entered on transfer record this 16 day of July, 1975.
Virginia McCune County Clerk
Virginia McCune

This plat of "SECOND INDUSTRIAL SUBDIVISION" has been submitted to and approved by the Hesston Planning Commission, Hesston, Kansas, and is hereby transmitted to the City Council of the City of Hesston, Kansas, with the recommendation that such plat be approved as proposed.
Dated this 16 day of JUNE, 1975.

Robert Showalter Chairman
Gary Burr Secretary

The dedications shown on this plat are hereby accepted by the City Council this 2 day of July, 1975.

Milton Miller Mayor
Luella Schmidt City Clerk



Book 267
Page 873