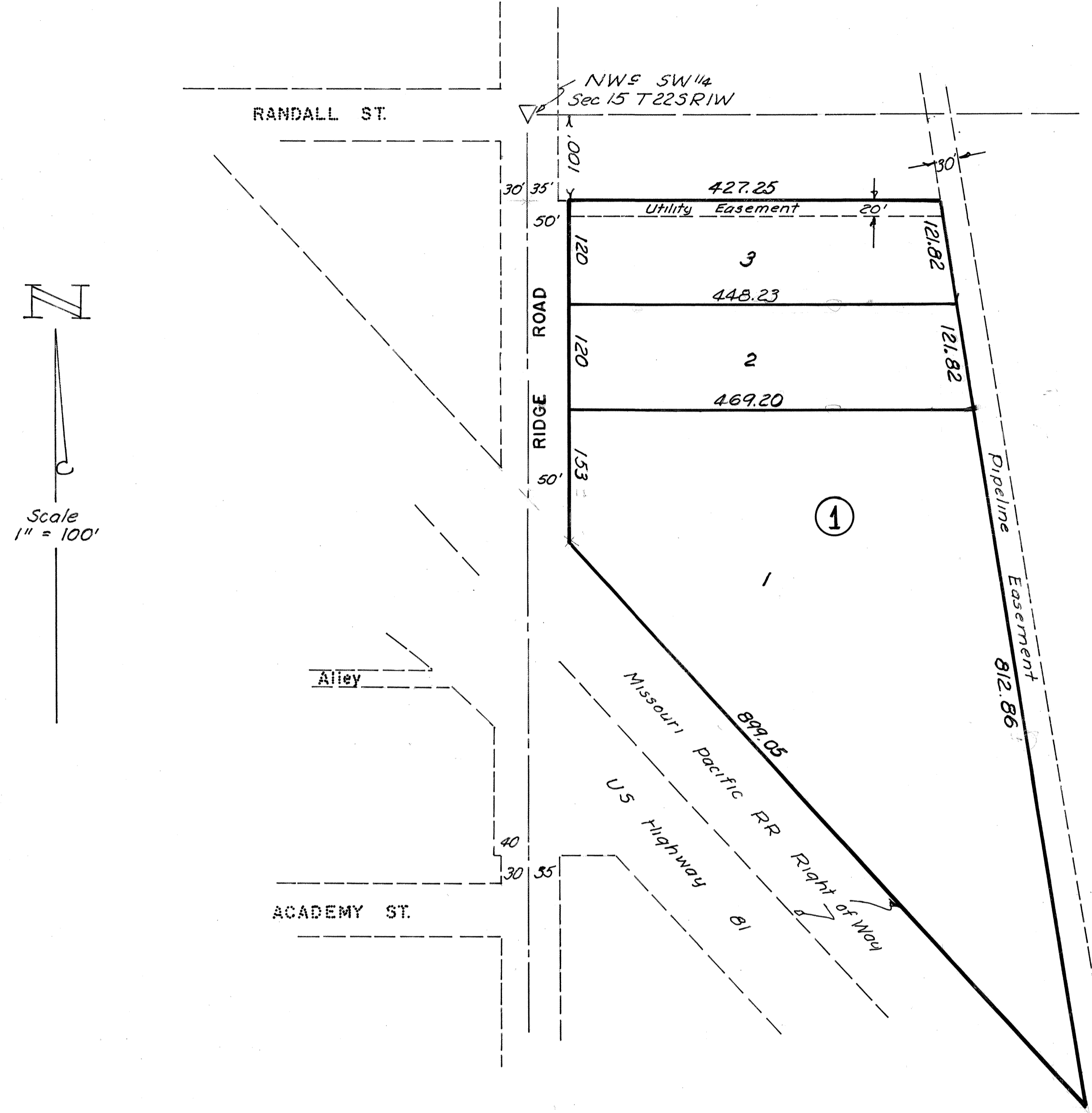


133 BK2

# EAST INDUSTRIAL ADDITION

HESSTON KANSAS

133 BK2



STATE of KANSAS } SS  
 COUNTY of HARVEY }  
 KNOW ALL MEN BY THESE PRESENTS that The City of Hesston, Kansas, a municipal corporation is the owner of the following described property:

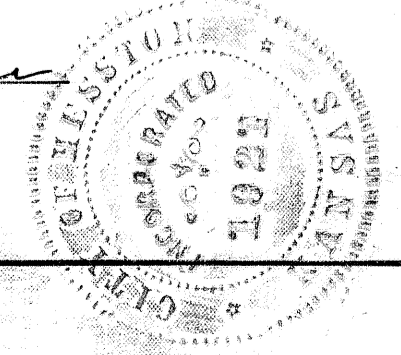
Beginning 100 feet south of the Northwest corner of SW 1/4 Section fifteen (15), Township twenty-two (22) South, Range One (1) West of the Sixth Principal Meridian; thence East parallel to the north line of said quarter section 477.25 feet, more or less, to the west line of the existing pipeline right-of-way; thence south 1056.5 feet along the west line of said pipeline right-of-way to the north line of the Missouri Pacific Railroad right-of-way; thence northwesterly 950.94 feet along the north line of said Missouri Pacific Railroad right-of-way to the west line of said quarter section; thence north 341.90 feet along the west line of said quarter section to the point and place of beginning.

and that we have caused said tract to be surveyed and platted into blocks and lots to be known as the East Industrial Addition to Hesston, Kansas for the purpose of conveying the same by numbers of blocks and lots.

All streets and easements as shown on the accompanying plat are hereby dedicated to and for public use and benefit.

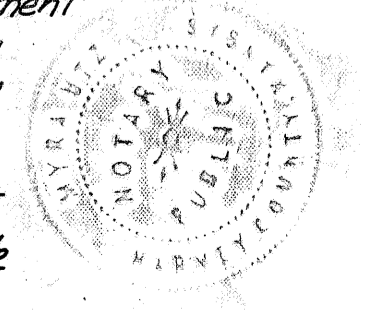
Milton R. Miller  
 Mayor - City of Hesston

Erby Buller  
 City Clerk



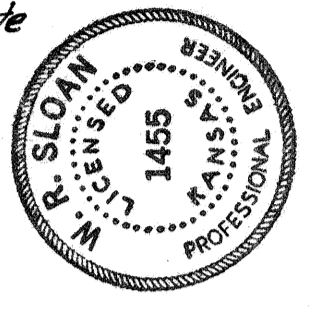
STATE of KANSAS } SS  
 COUNTY of HARVEY }  
 BE IT REMEMBERED that on this 15<sup>th</sup> day of JULY 1964, before me, a Notary Public in and for said County and State came MILTON R. MILLER, MAYOR AND ERBY BULLER, CITY CLERK to me personally known to be the same persons who executed the foregoing instrument and such persons duly acknowledged the execution of the same as the voluntary act and deed of said city

Murray Ut  
 Notary Public.  
 My commission expires MARCH 15, 1966



STATE of KANSAS } SS  
 COUNTY of HARVEY }  
 I certify that I have caused to be surveyed and platted East Industrial Addition to Hesston, Kansas and that the accompanying plat is a true and correct exhibit of the property as surveyed and described in the owners certificate

F. R. Sloan  
 County Surveyor

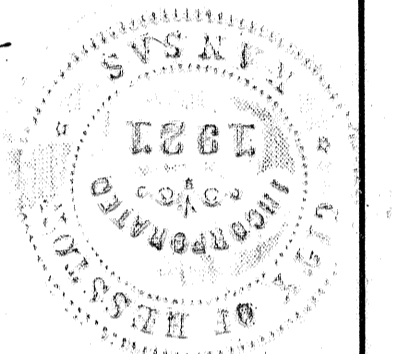


STATE of KANSAS } SS  
 COUNTY of HARVEY }  
 Approved by the City Planning Commission of the City of Hesston, Kansas this 15<sup>th</sup> day of JULY 1964

William C. King Chairman  
Murray Bandy Secretary

STATE of KANSAS } SS  
 COUNTY of HARVEY }  
 Approved by the City Council of the City of Hesston Kansas this 15<sup>th</sup> day of JULY 1964

Milton R. Miller Mayor  
Erby Buller City Clerk



STATE of KANSAS } SS  
 COUNTY of HARVEY }  
 BE IT REMEMBERED that the plat of East Industrial Addition to the City of Hesston, Kansas has been submitted to me and that the same is hereby approved this 15<sup>th</sup> day of JULY 1964.

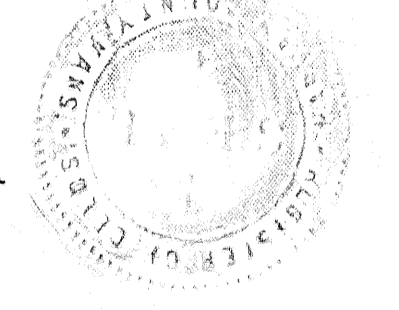
Richard A. Walker  
 City Attorney

STATE of KANSAS } SS  
 COUNTY of HARVEY }  
 Approved by the Board of County Commissioners of Harvey County, State of Kansas this 21<sup>st</sup> day of July 1964

Clarence J. Pungeman  
 Chairman

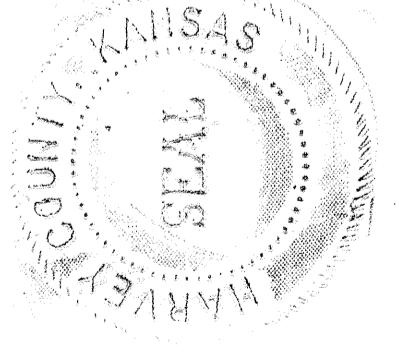
STATE of KANSAS } SS  
 COUNTY of HARVEY }  
 This is to certify that this instrument was filed for record in the Register of Deeds Office this 22<sup>nd</sup> day of July 1964 at 11:30 a.m. o'clock and is duly recorded in Book 241 Page 17-18

Kenneth A. Shupler  
 Register of Deeds  
 by Janet Ferris Deputy



STATE of KANSAS } SS  
 COUNTY of HARVEY }  
 Entered on the Transfer Record this 22<sup>nd</sup> day of July 1964

Vivian A. Benedict  
 County Clerk



133 BK2

133 BK2

BOOK 2 PG 133