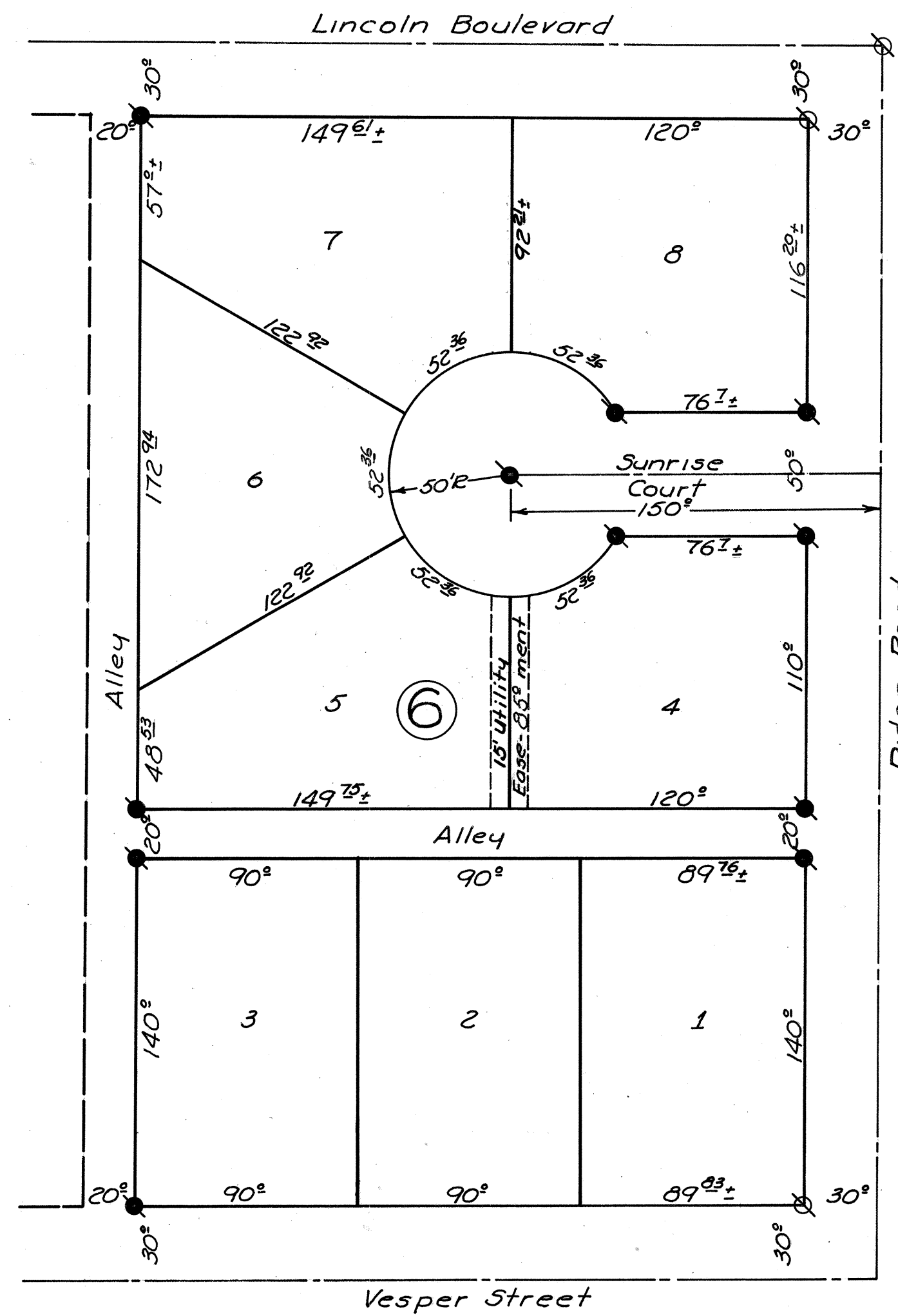


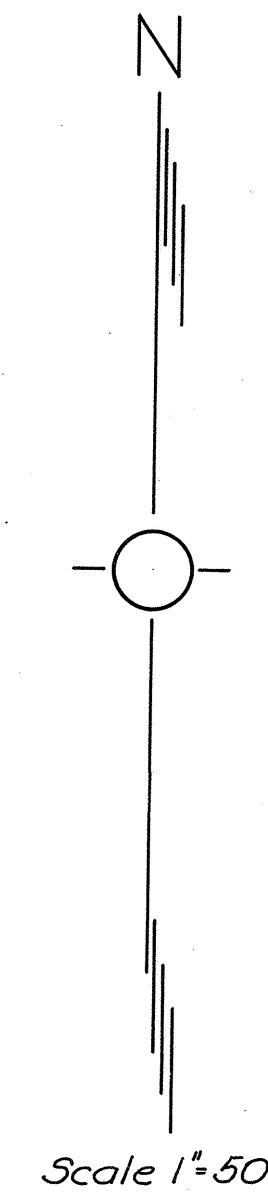
41-L BK2

41-L BK2

SUBDIVISION BLOCK 6  
PFAUTZ ADDITION  
CITY OF HESSTON  
HARVEY COUNTY KANSAS



⊗ Denotes Iron Pins set previously  
● Denotes Iron Pins set this survey



State of Kansas }  
County of Harvey } 55

Know all men by these presents that I Clara Pfautz a widow, am the owner of the following described property: Block 6, Pfautz Addition, City of Hesston, Harvey County, Kansas, and that I have caused said Block to be surveyed and platted into Lots to be known as the Subdivision of Block 6 Pfautz Addition, City of Hesston, Harvey County, Kansas for the purpose of conveying the same by numbers of Lots.

All streets, alleys, and easements as shown on the accompanying plat are hereby dedicated to and for the public use and benefit.

Clara Pfautz

State of Kansas }  
County of Harvey } 55

I, Paul D. Newcomer, County Surveyor in and for said County and State, do hereby certify that I have surveyed and platted the Subdivision of Block 6, Pfautz Addition City of Hesston, Harvey County, Kansas, and that the accompanying plat is a true and correct exhibit of the property as surveyed and described in the owners certificate.

Paul D. Newcomer  
County Surveyor

State of Kansas }  
County of Harvey } 55

Be it remembered that on this 18th day of Dec, 1961, before me a Notary in and for said County and State came Clara Pfautz, to me personally known to be the same person who executed the foregoing instrument, and such person duly acknowledged the execution of the same as her voluntary act and deed.

Paul  
Notary Public

My Commission Expires Feb. 8, 1964

State of Kansas }  
County of Harvey } 55

We the undersigned Raymond E. King and Ray Schlichting chairman and secretary respectively of the Planning Commission of the City of Hesston, Kansas, do hereby certify that the plat of the Subdivision of Block 6 Pfautz Addition City of Hesston, Harvey County, Kansas was submitted at a meeting duly convened this 8th day of Dec, EMBS 1961. That at said meeting the said Commission passed a resolution approving said plat and recommended that the same be accepted and adopted by the governing body of said City, as by law provided as an addition to the City of Hesston, Kansas.

Ray Schlichting  
Secretary

Raymond E. King  
Chairman

State of Kansas }  
County of Harvey } 55

Be it remembered that the plat of the Subdivision of Block 6 Pfautz Addition City of Hesston, Harvey County, Kansas has been submitted to me and that the same is hereby approved this 7th day of December 1961.

Kenneth L. Spain  
City Attorney of Hesston, Kansas

State of Kansas }  
County of Harvey } 55

Approved by the City Council of the City of Hesston, Kansas this 1st day of December 1961.

Charles D. Hunschert  
Clerk

Milton R. Miller  
Mayor

State of Kansas }  
County of Harvey } 55

Entered on the Transfer Record this 12 day of December 1961.

Wanda H. Bendis by Lois Wick, Deputy  
County Clerk

State of Kansas }  
County of Harvey } 55

This is to certify that this instrument was filed for record in the Register of Deeds office on this 12 day of December, 1961, at 3:30 PM o'clock and is duly recorded in Book 221 Pages 133+134.

9879

Marion C. Reed by Janet Conie  
Register of Deeds Deputy

Book 200 41-L

Book 2

41-L BK2

41-L BK2