

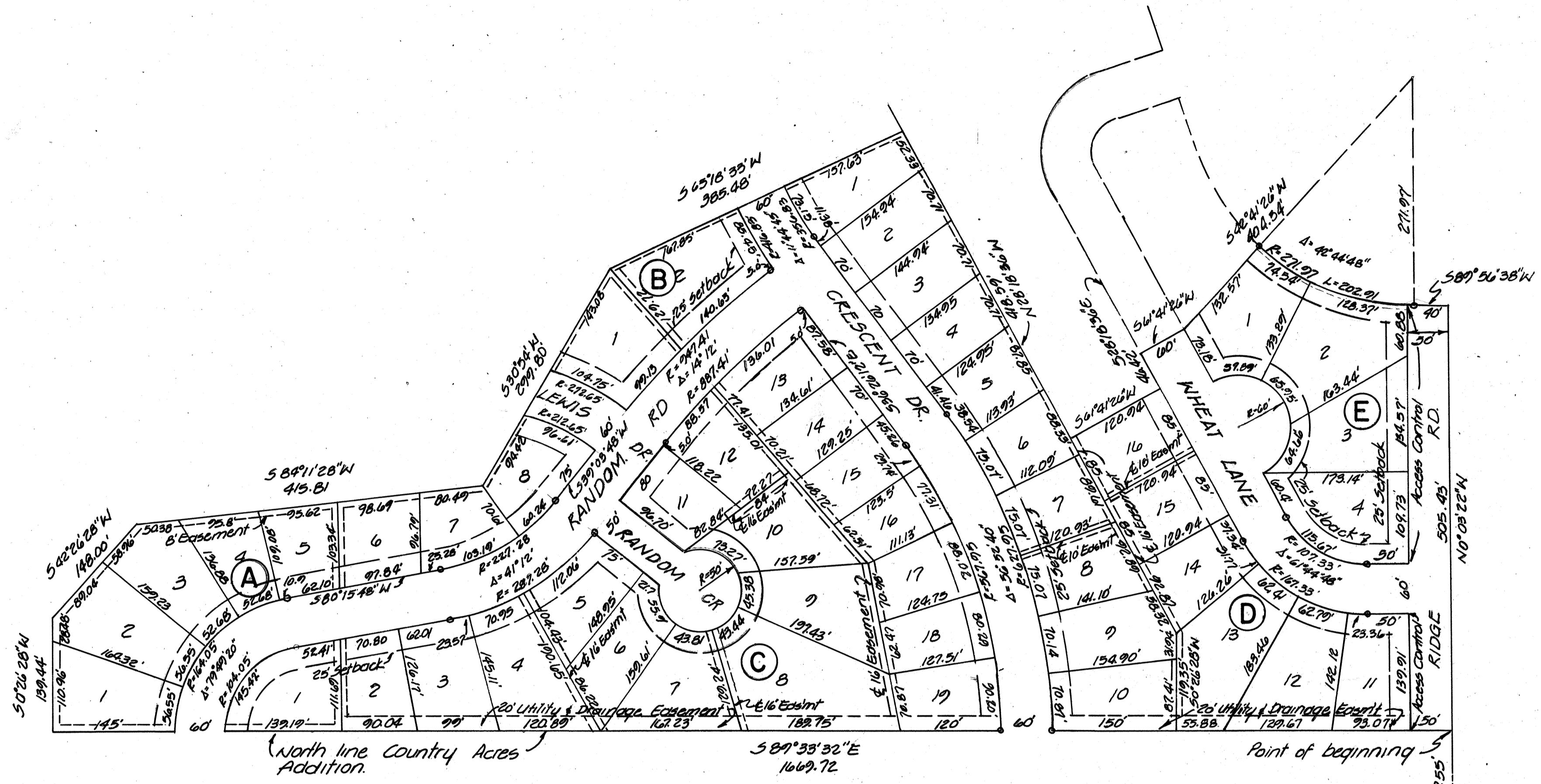
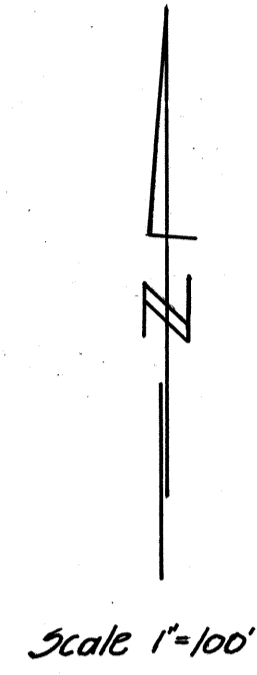
PRAIRIE PARK ADDITION
TO HESSTON, HARVEY COUNTY, KANSAS.

151
Bk2

STATE OF KANSAS
COUNTY OF SEDGWICK S. S.

I, REX BRUNSON, A LICENSED PROFESSIONAL ENGINEER IN AFORESAID STATE AND COUNTY, DO HEREBY CERTIFY THAT I HAVE CAUSED TO BE SURVEYED AND PLATTED PRAIRIE PARK ADDITION TO HESSTON, HARVEY COUNTY, KANSAS, INTO BLOCKS, LOTS, DRIVES, ROADS, A COURT, AND A LANE. THE SAME BEING DESCRIBED AS:

A TRACT OF LAND IN THE SOUTHEAST QUARTER OF SECTION 9, TOWNSHIP 22 SOUTH, RANGE 1 WEST OF THE 6TH P. M. AND BEGINNING AT A POINT IN THE EAST LINE OF SAID SECTION 9, AND 757.55 FEET NORTH OF THE SOUTHEAST CORNER OF SAID SECTION 9; THENCE, NORTH ALONG THE EAST LINE OF SAID SECTION 9, AND BEARING NORTH 0° 03' 22" WEST, A DISTANCE OF 505.43 FEET; THENCE, SOUTH 89° 56' 38" WEST, A DISTANCE 40 FEET TO THE P.C. OF A CURVE TO THE RIGHT WHOSE RADIUS IS 271.97 FEET; THENCE ALONG SAID CURVE TO THE RIGHT AND THROUGH A CENTRAL ANGLE OF 42° 44' 48" A DISTANCE OF 202.91 FEET; THENCE SOUTH 42° 41' 26" WEST, A DISTANCE OF 132.57 FEET; THENCE SOUTH 61° 41' 26" WEST, A DISTANCE OF 60 FEET; THENCE SOUTH 28° 18' 36" EAST, A DISTANCE OF 46.42 FEET; THENCE SOUTH 61° 41' 26" WEST, A DISTANCE OF 120.94 FEET; THENCE NORTH 28° 18' 36" WEST A DISTANCE OF 418.59 FEET; THENCE SOUTH 65° 18' 33" WEST, A DISTANCE OF 385.48 FEET; THENCE SOUTH 30° 54' WEST, A DISTANCE OF 299.80 FEET; THENCE SOUTH 84° 11' 28" WEST, A DISTANCE OF 415.81 FEET; THENCE SOUTH 42° 26' 28" WEST, A DISTANCE OF 148 FEET; THENCE SOUTH 0° 26' 28" WEST, A DISTANCE OF 139.44 FEET; TO A POINT IN THE NORTH LINE OF COUNTRY ACRES ADDITION IN HESSTON, KANSAS; THENCE ALONG THE NORTH LINE OF SAID COUNTRY ACRES ADDITION AND BEARING SOUTH 89° 33' 32" EAST A DISTANCE OF 1,669.72 FEET TO THE POINT OF BEGINNING.



Rex Brunson
LICENSED ENGINEER #2834 KANSAS

KNOW ALL MEN BY THESE PRESENTS THAT WE, THE UNDERSIGNED PROPERTY OWNERS OF THE LAND AS ABOVE SET FORTH IN THE CIVIL ENGINEER'S CERTIFICATE HAVE CAUSED THE LAND TO BE SURVEYED AND PLATTED INTO BLOCKS, LOTS, DRIVES, ROADS, A COURT AND A LANE. THE SAME TO BE KNOWN AS PRAIRIE PARK ADDITION TO HESSTON, HARVEY COUNTY, KANSAS. EASEMENTS AS INDICATED, FOR THE CONSTRUCTION AND MAINTENANCE OF PUBLIC UTILITIES ARE HEREBY GRANTED. THE DRIVES, ROADS, A COURT AND A LANE ARE HEREBY DEDICATED TO AND FOR THE USE OF THE PUBLIC.

COMMUNITY DEVELOPERS INCORPORATED

PRESIDENT *Jack R. Jones*
SECRETARY *John H. Trout, Jr.*

STATE OF KANSAS
COUNTY OF HARVEY S. S.

BE IT REMEMBERED THAT ON THIS 3rd DAY OF MAY 1967, BEFORE ME A NOTARY PUBLIC IN AND FOR SAID STATE AND COUNTY, CAME COMMUNITY DEVELOPERS INCORPORATED, ITS PRESIDENT Jack R. Jones, AND ITS SECRETARY John H. Trout, Jr. TO ME PERSONALLY KNOWN TO BE THE SAME PERSONS WHO EXECUTED THE FOREGOING INSTRUMENT OF WRITING AND DULY ACKNOWLEDGED THE EXECUTION OF SAME. IN TESTIMONY WHEREOF I HAVE HEREUNTO SET MY HAND AND AFFIXED MY NOTARIAL SEAL THE DAY AND YEAR ABOVE WRITTEN.

NOTARY PUBLIC *Clayton A. ...*
MY COMMISSION EXPIRES 4-22-1971

THIS PLAT OF PRAIRIE PARK ADDITION TO HESSTON, HARVEY COUNTY, KANSAS, IS HEREBY SUBMITTED TO THE CITY COUNCIL OF THE CITY OF HESSTON, KANSAS, TO BE APPROVED AS PROPOSED.
DATED THIS 4th DAY OF May 1967.

Milton R. Miller MAYOR
Earl Buller CITY CLERK

APPROVED BY THE BOARD OF COUNTY COMMISSIONERS THIS 8th DAY OF May 1967.
Warren Long CHAIRMAN
Edmond ... COMMISSIONER

Glenn Randall COUNTY CLERK

APPROVED BY THE HESSTON PLANNING COMMISSION THIS 4th DAY OF May 1967.

Murray Bandy CHAIRMAN
Raymond King SECRETARY

ENTERED ON TRANSFER RECORD THIS 16 DAY OF May 1967.

Glenn Randall COUNTY CLERK

STATE OF KANSAS
COUNTY OF HARVEY S. S.

THIS IS TO CERTIFY THAT THIS INSTRUMENT WAS FILED FOR RECORD IN THE REGISTER OF DEEDS OFFICE ON THIS 16 DAY OF May 1967 AT 10:30 AM O'CLOCK, AND IS DULY RECORDED.

Book 249 Page 495

Kenneth A. Shepler REGISTER OF DEEDS

DEPUTY

26642

Book 2 Pg 151

Book 2