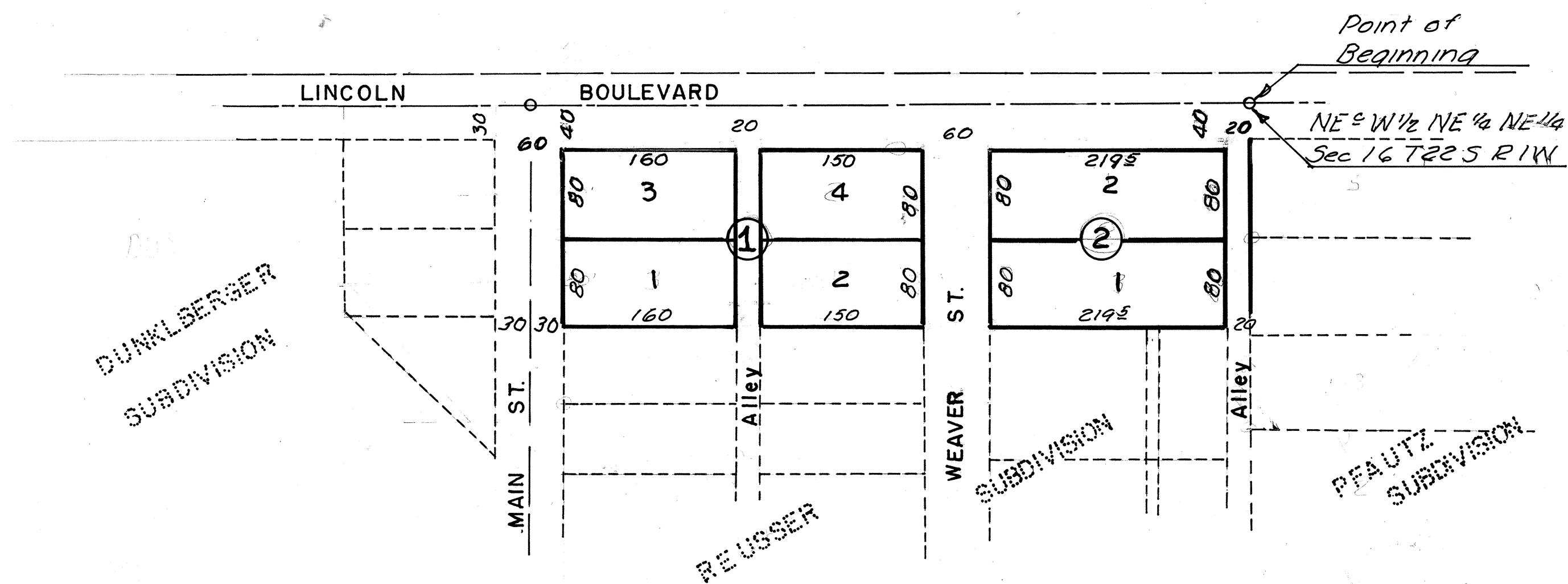


ROUPPS SUBDIVISION

Book 2

HESSTON KANSAS



STATE of KANSAS } SS
COUNTY of HARVEY }

Know all men by these presents that We, Milford Rouppe and Roselena Rouppe, his wife, hereby certify that we are the owners in fee simple of the following described property: Beginning at the North east corner of the west one half (W 1/2) of the North east one quarter (NE 1/4) of the Northeast one quarter (NE 1/4) of Section Sixteen (16) Township Twenty-two South (22-S) Range one West (R1W) of the Sixth (6th) Principal Meridian; thence South two hundred (200) feet; thence West forty (40) rods, thence North two hundred (200) feet; thence East forty (40) rods to place of beginning; and we have caused said above described property to be surveyed and platted into Blocks, Lots, Streets and Alleys of location and dimensions as shown for the purpose of recording and conveying same by Block and Lot number.

All streets and alleys as shown on the accompanying plat are hereby dedicated to and for the public use and benefit.

Milford Rouppe
MILFORD ROUPPE

Roselena Rouppe
ROSELENA ROUPPE

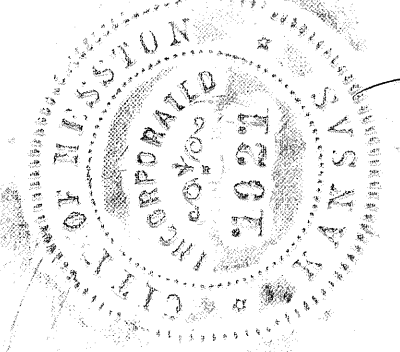
STATE of KANSAS } SS
COUNTY of HARVEY }

Be it remembered that on this 12th day of August 1963, before me, a notary public in and for said County and State, came Milford Rouppe and Roselena Rouppe, his wife, to me personally known to be the same persons who executed the foregoing instrument, and such person duly acknowledge the execution of the same as their voluntary act and deed.

My Commission Expires Feb. 8, 1964



Notary Public



STATE of KANSAS } SS
COUNTY of HARVEY }

Approved by the Board of County Commissioners of Harvey County, Kansas, on this 3rd day of September 1963

Chairman
Chairman

STATE of KANSAS } SS
COUNTY of HARVEY }

Approved by the City Planning Commission of the City of Hesston, Kansas on this 29th day of August 1963.

Secretary
Secretary

Chairman
Chairman

STATE of KANSAS } SS
COUNTY of HARVEY }

Be it Remembered that the Plat of Rouppe Subdivision, Harvey County, Kansas, has been submitted to me and that the same is hereby approved this 5th day of September 1963.

City Attorney, Hesston, Kansas

STATE of KANSAS } SS
COUNTY of HARVEY }

Approved by the City Council of the City of Hesston, Kansas this 29th day of August 1963.

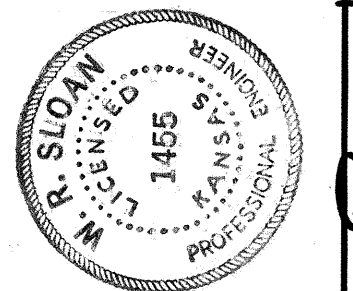
City Clerk
City Clerk

Mayor
Mayor

STATE of KANSAS } SS
COUNTY of HARVEY }

I, W.R. Sloan, County Surveyor in and for said County and State that I have caused to be surveyed, and platted Rouppe Subdivision, City of Hesston, Kansas, and that accompanying plat is a true and correct exhibit of the property as surveyed and described in the owner's certificate.

County Surveyor
County Surveyor

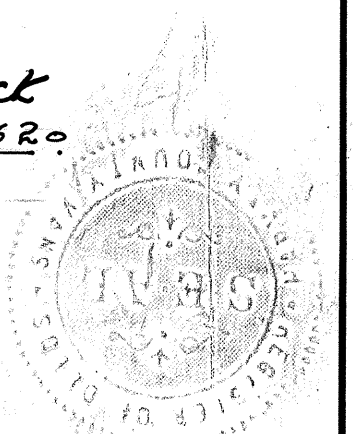


15396

STATE of KANSAS } SS
COUNTY of HARVEY }

This is to certify that this instrument was filed for record in the Register of Deeds Office this 19 day of September 1963, at 3:00 P. M. o'clock and is duly recorded in Book 233 Pages 517-520.

Register of Deeds
by Janet Tarras, Deputy



STATE of KANSAS } SS
COUNTY of HARVEY }

Entered on the Transfer Record this 19th day of September 1963.

County Clerk
County Clerk



Book 2 Pg 411