

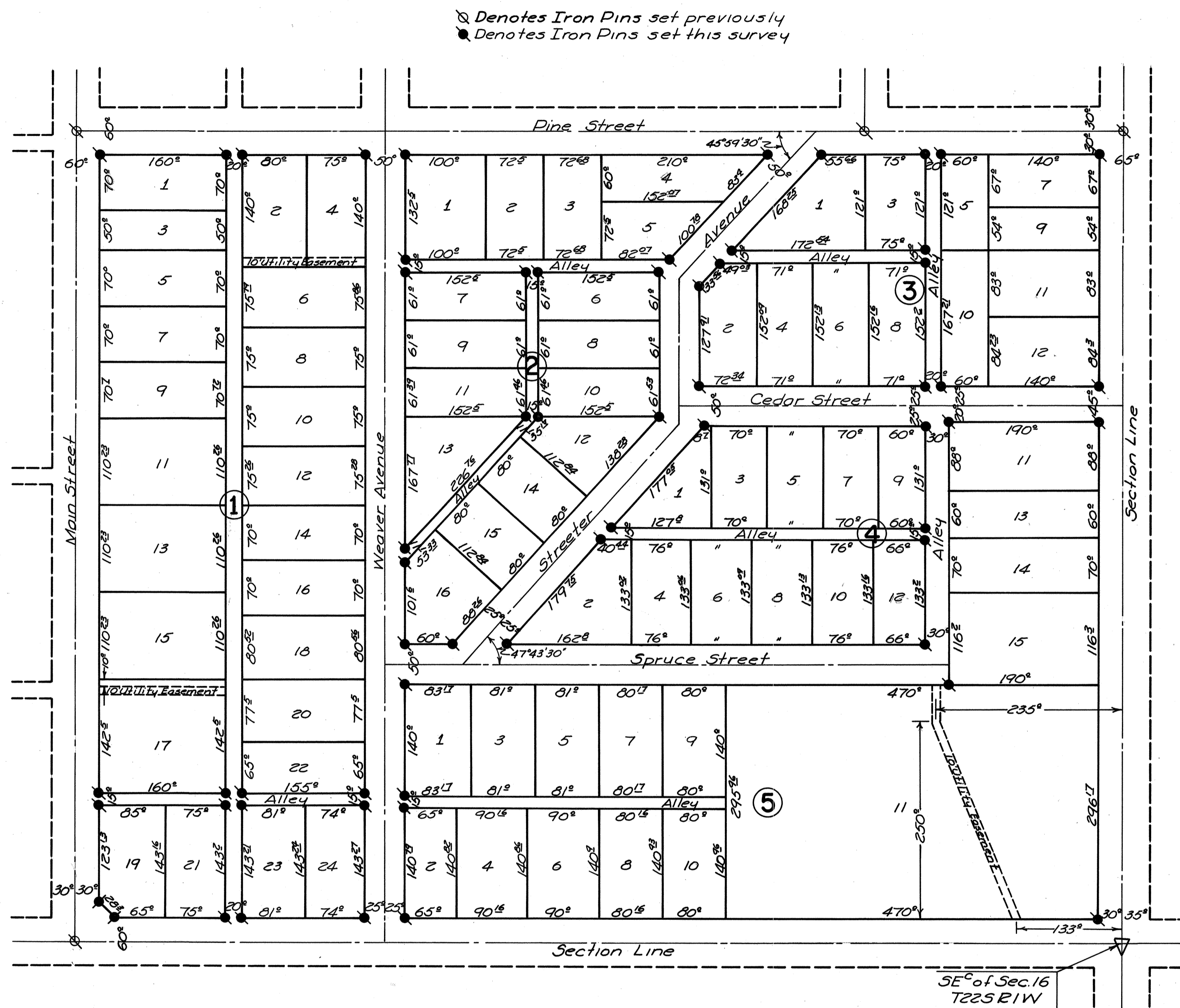
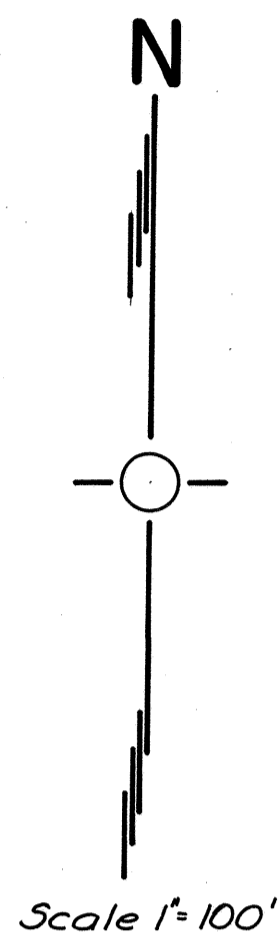
SOUTHVIEW ADDITION

CITY OF HESSTON

HARVEY COUNTY KANSAS

41-K
BK2

41-K
BK-2



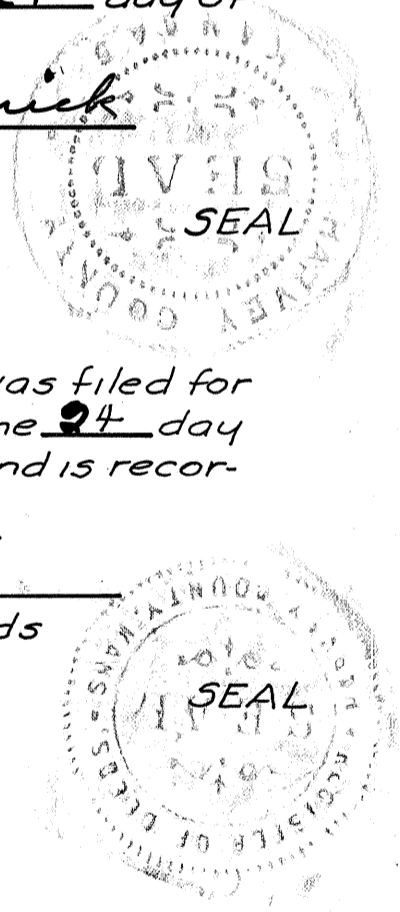
4681

State of Kansas } 55
County of Harvey }
Entered on the Transfer Record this 24 day of
MARCH 1960.

Clay Hedrick
County Clerk

State of Kansas } 55
County of Harvey }
This is to certify that this instrument was filed for
record in the Register of Deeds office on the 24 day
of MARCH 1960, at 3:30 o'clock, and is recorded
in Book 214 Page 149 + 150

Martin Seal
Register of Deeds



State of Kansas } 55
County of Harvey }

Know all men by these presents that we the Newton Development Corporation, Inc, a corporation organized and existing under the laws of the State of Kansas, by and through its President and Secretary, are owners of the following described property: Beginning at the Southeast corner of Section 16 Township 22 South Range 1 West of the Sixth P.M.; thence West 1240.32 feet along the South line of said Section 16, to a point 80 feet East of the intersection of said Section line and the center line of Main Street in the City of Hesston, Harvey County Kansas; thence North westerly to a point 80 feet North of said intersection; thence North 942.02 feet along the center line of Main Street in said City, to the center line of Pine Street in said City; thence East 1320.35 feet along the center line of Pine Street in said City to the East line of said Section 16; thence South 1023.8 feet to the place of beginning, and that we have caused said tract to be surveyed and platted into Blocks and Lots to be known as Southview Addition, City of Hesston, Harvey County Kansas for the purpose of conveying same by numbers of Blocks and Lots. All streets, alleys, and easements are hereby dedicated to the public use and benefit.

Renault H. Spier Secretary
C. M. Rhoades President

State of Kansas } 55
County of Harvey }
Be it remembered that on this 22nd day of February 1960 before me a Notary Public in and for said County and State came C.M. Rhoades and Kenneth G. Spier, President and Secretary respectively of the Newton Development Corporation, Inc, who are known to me to be the same persons who executed the foregoing instrument of writing, and such persons duly acknowledged the execution of the same as the act and deed of said corporation.

Elvin J. Gray
Notary Public SEAL

My Commission Expires Feb. 5 - 1962.

State of Kansas } 55
County of Harvey }

We the undersigned Daniel J. Epp and Paul D. Newcomer chairman and secretary respectively of the Planning Board of Harvey County Kansas, do hereby certify that the plat of Southview Addition, City of Hesston, Harvey County Kansas was submitted at a meeting duly convened this 21st day of March 1960. That at said meeting the said Board duly passed a resolution approving said plat and recommended that the same be accepted as an addition to the City of Hesston, Harvey County Kansas.

Paul D. Newcomer Secretary
Daniel J. Epp Chairman

State of Kansas } 55
County of Harvey }
Approved by the Board of County Commissioners of Harvey County Kansas this 22nd day of March 1960.

George J. Schirley
Chairman

State of Kansas } 55
County of Harvey }
I, Paul D. Newcomer, County Surveyor in and for said County and State do hereby certify that I have surveyed and platted Southview Addition, City of Hesston, Harvey County Kansas and that the accompanying plat is a true and correct exhibit of the property as surveyed as described in the owners' certificate.

Paul D. Newcomer
County Surveyor

State of Kansas } 55
County of Harvey }

We the undersigned Raymond E. King and Ray Schlichting chairman and secretary respectively of the Planning Commission of the City of Hesston, do hereby certify that the plat of Southview Addition, City of Hesston, Harvey County Kansas was submitted at a meeting duly convened this 26th day of February 1960. That at said meeting the said Commission duly passed a resolution approving said plat, and recommended that the same be accepted and adopted by the governing body of said city, as by law provided, as an addition to the City of Hesston.

Ray Schlichting Secretary
Raymond E. King Chairman

State of Kansas } 55
County of Harvey }
Be it remembered that the plat of Southview Addition, City of Hesston, Harvey County Kansas has been submitted to me and that the same is hereby approved this 26th day of February 1960.

Kenneth L. Speer
City Attorney of Hesston, Kansas

State of Kansas } 55
County of Harvey }
Approved by the City Council of the City of Hesston, Harvey County Kansas this 24th day of February 1960.

Clifford W. Amstutz Clerk
Milton R. Miller Mayor

Book 2 Pg 41-K

Book 2

41-K
BK2

41-K