

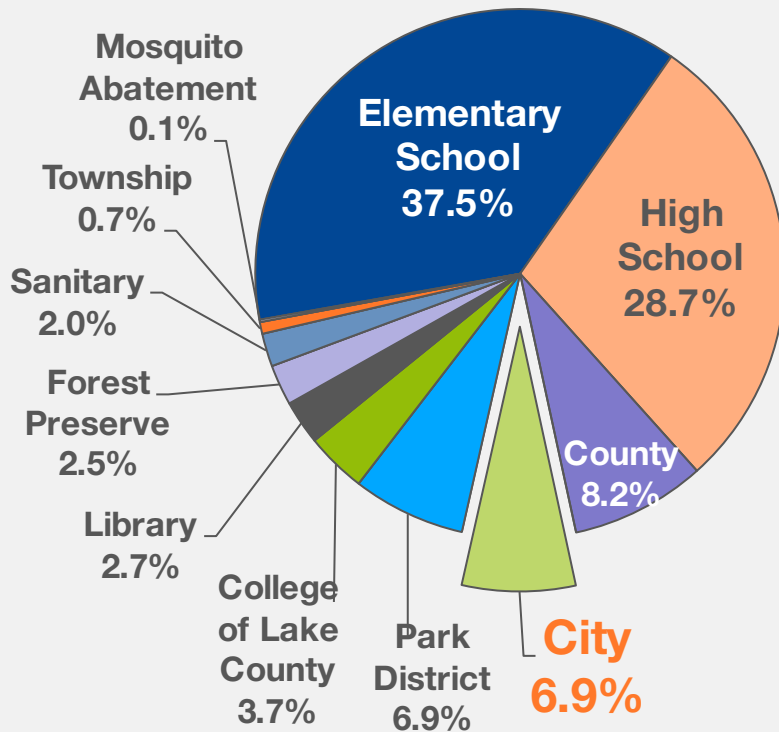
A historical black and white photograph of a street scene. In the foreground, a man in a dark suit and hat stands on the sidewalk, looking towards the camera. To his left, a horse-drawn carriage is being pulled by two horses. Further down the street, another horse-drawn carriage is visible, with a person sitting on top. The street is lined with trees, some with autumn-colored leaves. In the background, a large, light-colored building with a prominent tower and a blue roof is visible. The sky is clear and blue.

**Public Hearing
Proposed Tax Levy 2018
for Collection in 2019**

November 26, 2018

2019 Proposed Property Tax Levy

Distribution of 2017 Property Taxes Collected in Budget Year 2018



	2018 Tax Levy 2019 Budget	
Pensions	6,739,700	36%
FICA/Medicare/Genl.	3,140,000	17%
Roads (Capital)	2,478,500	13%
Debt	1,237,500	7%
City Levy	13,595,700	73%
Library Levy	4,948,300	27%
City & Library Levy	18,544,000	100%
<i>YTY Change</i>	5.5%	

Tax Levy Increase is \$235/HH, based on average \$500k EAV household

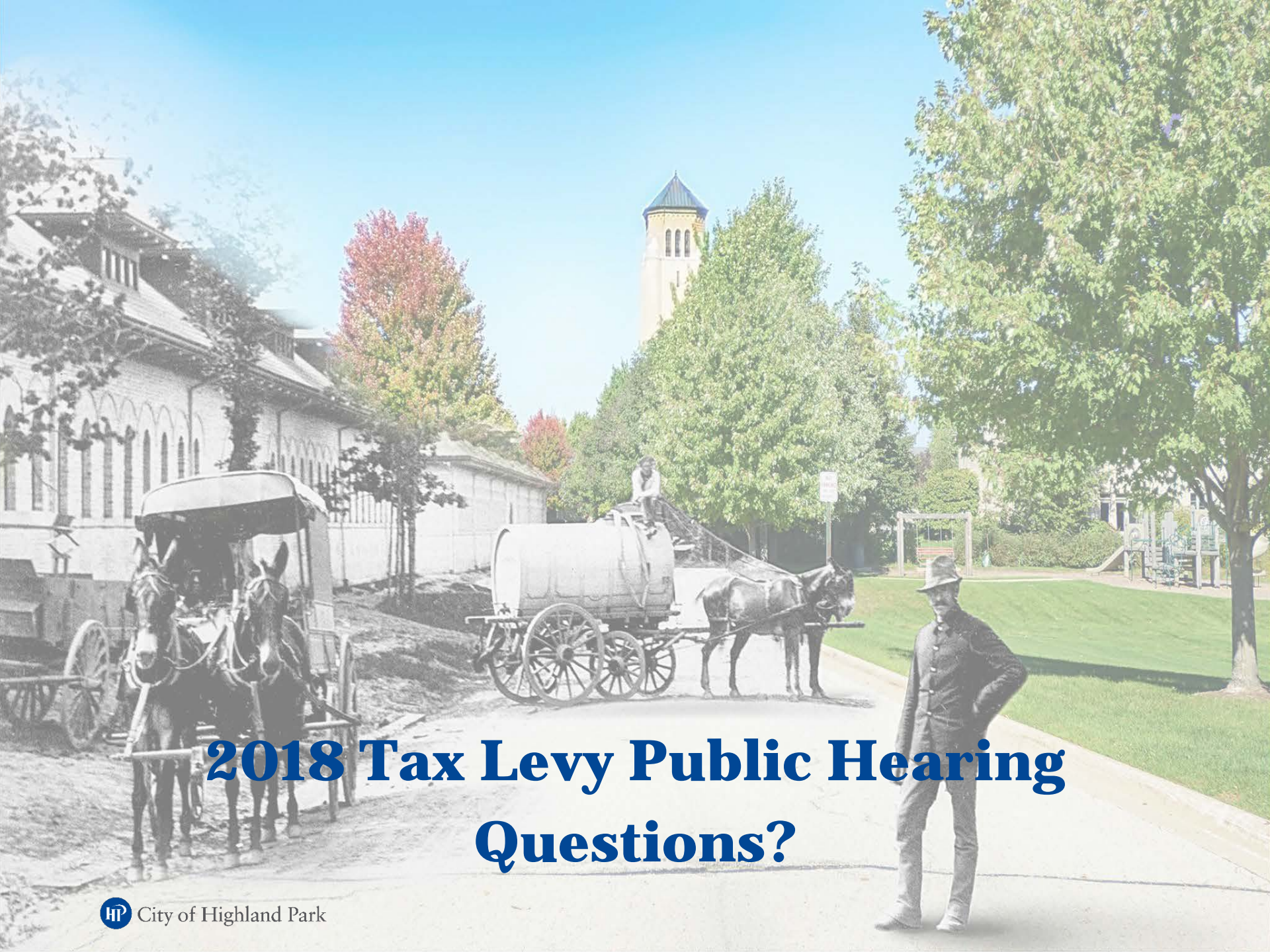
Property Tax Levy Truth in Taxation

Tax Levy Year Budget Year	Adopted	Extended	Proposed	% Incre./(Decre.) vs. Prior Year	
	TY17 FY18	TY17 FY18	TY18 FY19	Adopted	Extended
CITY LEVY					
Aggregate Levy	11,790,700	11,790,738	12,358,200	4.8%	4.8%
Debt Service Levy	887,800	797,979	1,237,600	39.4%	55.1%
Total Levy	12,678,500	12,588,717	13,595,800	7.2%	8.0%
LIBRARY LEVY					
Aggregate Levy*	4,893,566	4,893,578	4,948,300	1.0%	1.0%
Total Levy	4,893,566	4,893,578	4,948,300	1.1%	1.1%
CITY AND LIBRARY LEVY					
Aggregate Levy	16,684,266	16,684,316	17,306,500	3.7%	3.7%
Debt Service Levy	887,800	797,979	1,237,600	39.4%	55.1%
Total Levy	17,572,066	17,482,295	18,544,100	5.5%	6.1%

*-The Library Debt Service is included in the Aggregate Levy and excluded from the Debt Service Levy, as advised by Lake County.

Next Steps

- ✓ **December 10** **Approve the 2018 Tax Levy**
- ✓ **December 18** **File 2018 Tax Levy Ordinance**



2018 Tax Levy Public Hearing Questions?