

ROUNDBABOUT

36TH ST. SE.

SHAFFER AVE. SE.

MIDWEST UNITED  
FC SOCCER  
CLUB PROPERTY

PROPERTY LINE

BROADMOOR AVE. SE.

**IMPROVED PARK ENTRANCE**

- Including Boulevard Street with Landscaping and unique Architectural Features

**PICKELBALL COURTS**

- 12 Courts with Shade Shelter, Seating Areas, Restroom Building, and Parking

**RESTROOMS/ CONCESSIONS BUILDING**

**FOOD TRUCK PLAZA**

- Space for 4 Trucks with electrical

hook ups

**PAVED TRAILS**

- Includes rest areas with picnic tables and benches
- Approx. length of large loop = 1 mile

**POND**

- 3 Acre Adventure Sports such as kayaking, stand up paddle boarding, fishing, or water play

**DISC GOLF AND TRAIL**

- 18 Hole Disc Golf course over approximately 30 acres
- Course to be laid out to allow for 9 holes to be played with Start and End near Nature Center

**ELEVATED SHELTER / BANDSHELL**

**NATURE CENTER**

- Includes Restrooms, Retail Space and Equipment Rental Space, and Room Rental, Deck, and Rustic Campground Check-In
- Parking lot, Bus Drop Off, and Service Entrance

**NATURE TRAILS**

- Hiking and Mountain Biking Trails to be intermixed around Disc Golf Holes
- Locations are diagrammatic
- Final layout of Trails & Bridges to be determined in the field
- Approx. length - over 2 miles

**SKATE PARK and MTB SKILLS PARK**

- Cast Concrete Features, and Pre-Cast Concrete Skateable Art, Pump Track
- Includes Shaded Hangout Spaces and Parking Lot

**PARKING LOTS**

**LARGE DOG PARK**

- Includes Pathways, Shade Shelter, Seating, and Agility Course.

**SMALL PLAYGROUND**

- Includes Restroom Building, Shade Shelter, and seating areas

**SMALL DOG PARK**

- Includes Pathways, Shade Shelter, Seating, and Agility Course

**MULTI PURPOSE FIELDS AREA**

- Space allows for 2 full size soccer fields or 8 U-10 fields
- Includes parking, Shade Shelter, and Tot Lot Play Area

**SPECIAL EVENT/ TRANSITIONAL SPACE/**

**ENTRANCE DRIVE**

- Acquire easement for access off pf Broadmoor Ave.

**MODERN CAMPGROUND EXPANSION**

- 18 Pull through Campsites with full hook RV sites, Sanitation Station, and Restroom Shower Building, Campground Office/Check-In

**MAINTENANCE/ STORAGE BUILDING**

**RUSTIC CAMPGROUND**

- 10 Traditional Sites
- 5 Unique Sites which may include Cabin, Yurt, Tree House, or Platform camping
- Vault Toilet Building

**DESTINATION PLAYGROUND/ SPLASHPAD**

- Nature themed equipment
- Small Group Seating and Shade Sails
- Multiple Large Group Picnic Shelter with seating and grills, available for rent

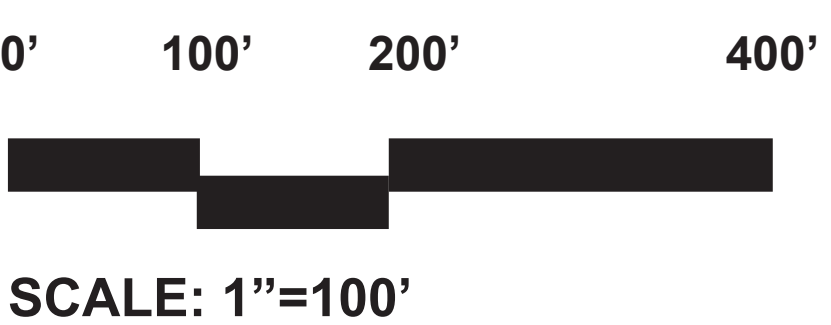
PLASTER CREEK

PLASTER CREEK

MESA VERDE CT. SE.

SHAFFER AVE. SE.

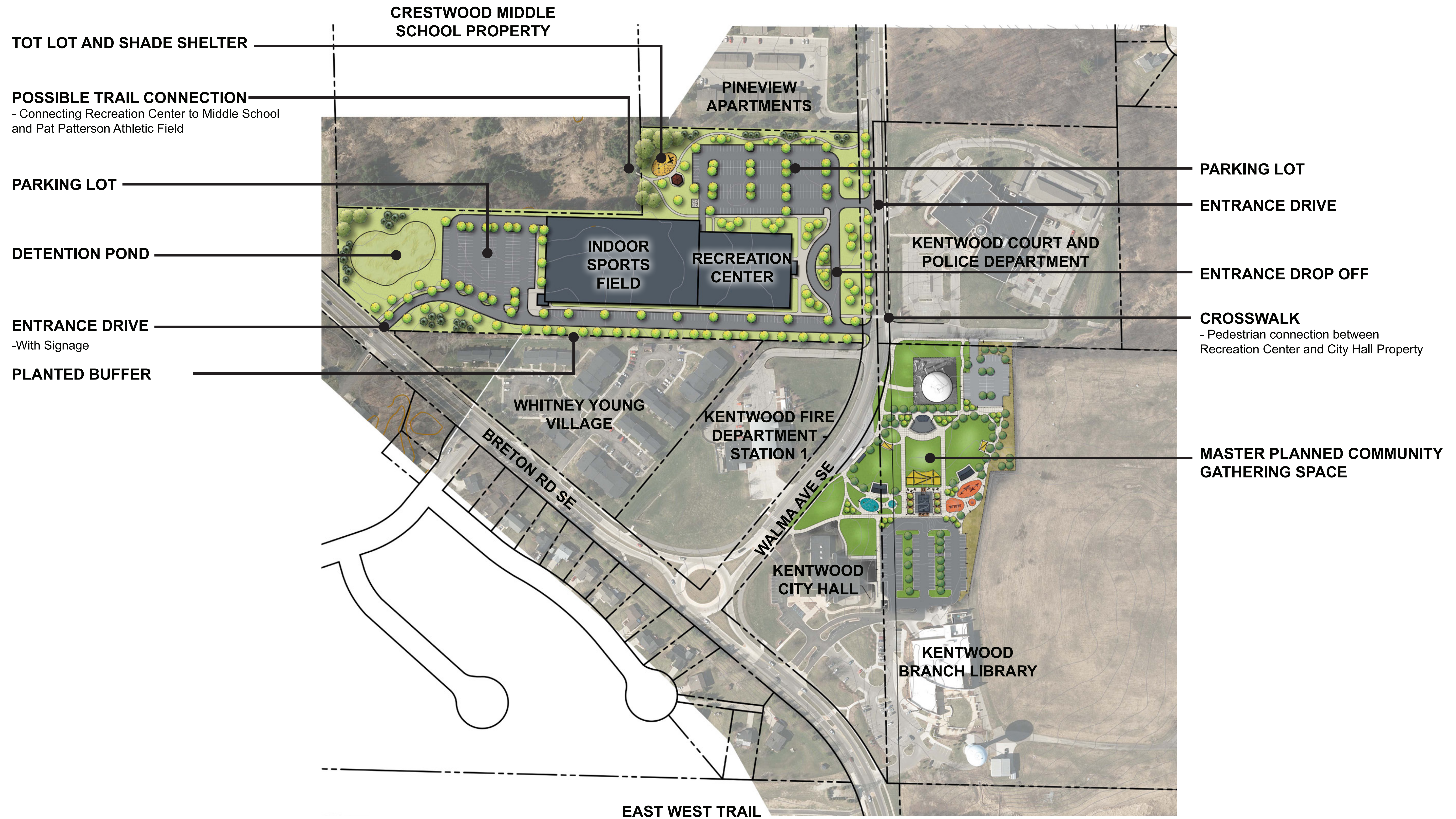
**CONCEPTUAL PLAN**  
**COVENANT PARK**  
CITY OF KENTWOOD, MICHIGAN



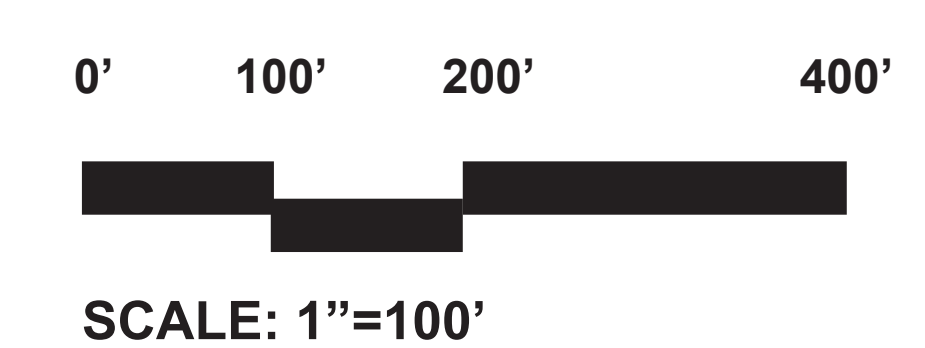
DATE  
10.18.2021

PROJECT NO.  
2088





CONCEPTUAL PLAN  
**WALMA PROPERTY**  
 CITY OF KENTWOOD, MICHIGAN



DATE  
10.18.2021  
PROJECT NO.  
2088

