

CERTIFIED TRUE COPY OF  
RECORDED PLAT  
BY DEPARTMENT OF CONSUMER  
AND INDUSTRY SERVICES

BY *Maynard H. Dyer, P.S.*  
MAYNARD H. DYER, P.S., MANAGER  
SUBDIVISION CONTROL AND  
SURVEY & REMONUMENTATION  
SECTION

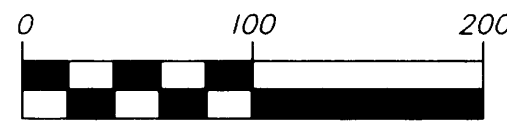
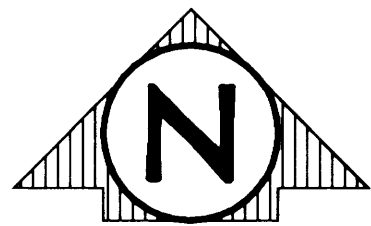
DATE 10/25/00

# FORESTA VERDE

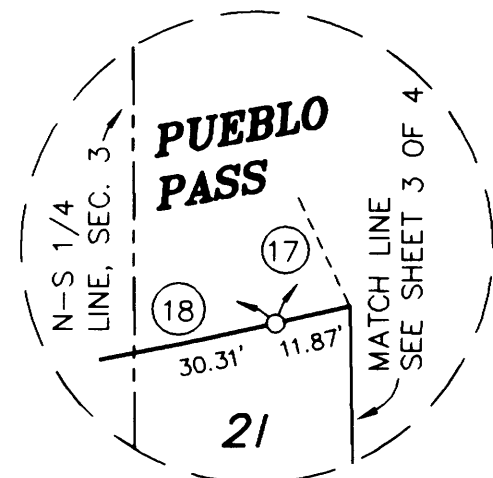
PART OF THE SOUTHWEST 1/4 AND THE SOUTHEAST 1/4  
OF SECTION 3, T14N-R6W, VILLAGE OF LAKE ISABELLA  
ISABELLA COUNTY, MICHIGAN

### LEGEND

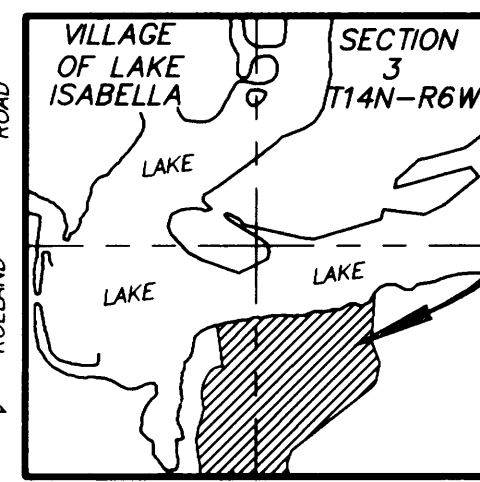
- ALL DIMENSIONS ARE GIVEN IN FEET.
- ALL CURVE DIMENSIONS ARE CHORD LENGTHS.
- ① INDICATES CURVE NUMBER.
- MONUMENTS CONSISTING OF 1/2 INCH DIAMETER STEEL ROD 36 INCHES IN LENGTH COMPLETELY ENCASED IN CONCRETE 4 INCHES IN DIAMETER HAVE BEEN PLACED AT POINTS MARKED "O".
- MONUMENTS CONSISTING OF 1/2 INCH DIAMETER STEEL ROD 36 INCHES IN LENGTH COMPLETELY ENCASED IN CONCRETE 4 INCHES IN DIAMETER HAVE BEEN FOUND AT POINTS MARKED "•".
- LOT CORNERS HAVE BEEN MARKED WITH RE-ROD, 1/2 INCH IN DIAMETER 18 INCHES IN LENGTH.
- BEARINGS WERE ESTABLISHED FROM "PLATINUS POINTE NO. 2", RECORDED IN LIBER 10 OF PLATS, PAGE 695.
- ALL BEARINGS ARE IN DEGREES (°), MINUTES (') AND SECONDS (").
- (R) - INDICATES RADIAL LINE.  
(NR) - INDICATES NONRADIAL LINE.
- (20) DISTANCE FROM INTERMEDIATE TRAVERSE LINE TO THE FLOODPLAIN.
- ALL WATER FRONT LOT LINES EXTEND TO THE WATER'S EDGE.



1 inch = 100 ft.

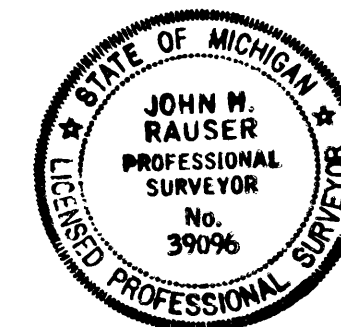
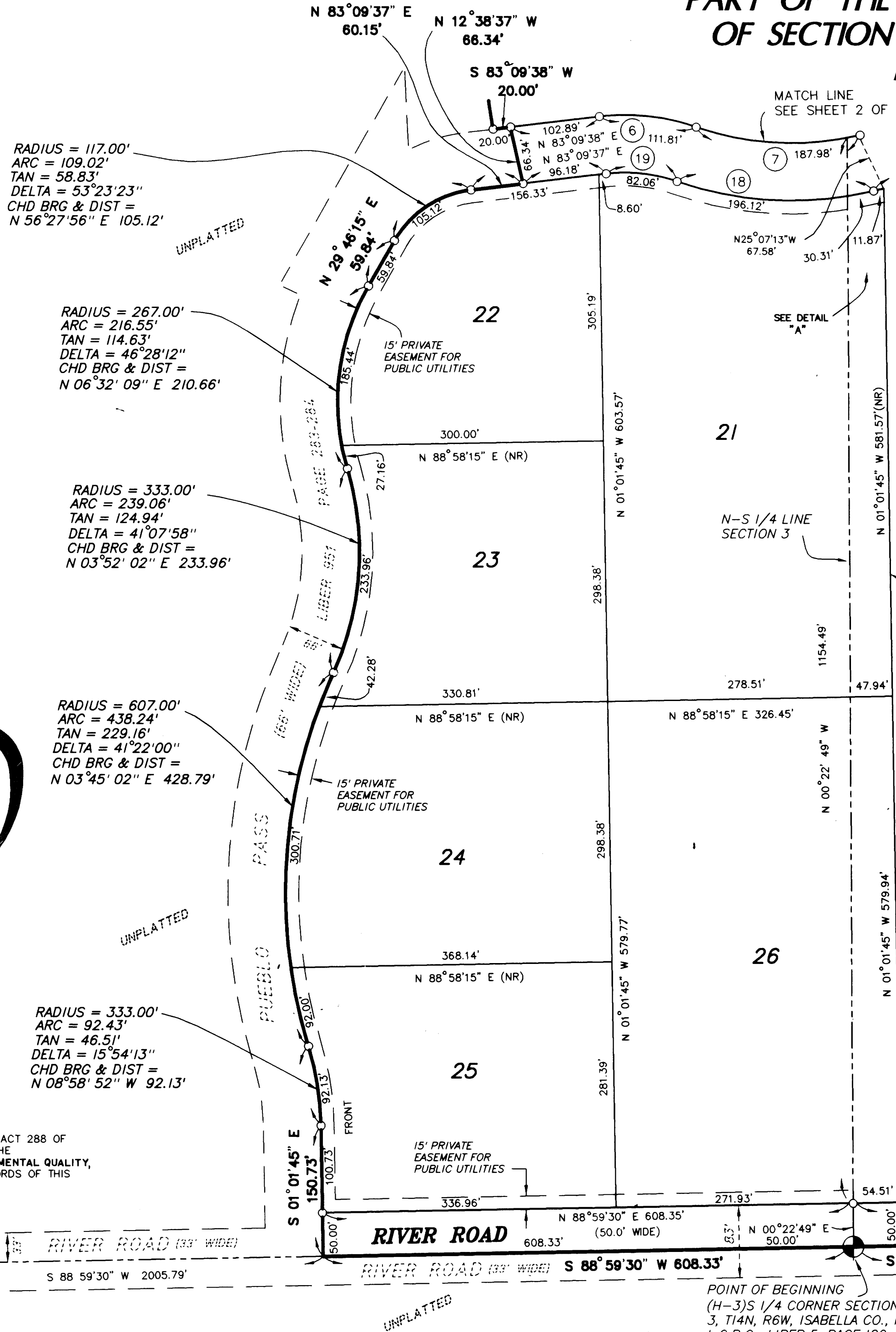


### FORESTA VERDE



### LOCATION SKETCH

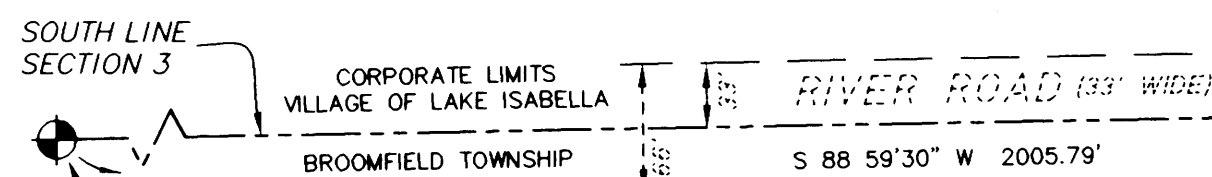
NO SCALE



*John H. Rauser*  
JOHN H. RAUSER, P.S. No. 39096

CURVE TABLE						
CURVE	RADIUS	LENGTH	TANGENT	CHORD	BEARING	DELTA
6	248.00'	112.78'	57.38'	111.81'	S83°48'42" E	26°03'21"
7	332.00'	190.59'	98.00'	187.98'	S87°13'46" E	32°53'28"
18	398.00'	228.47'	117.48'	225.35'	N87°13'46" W	32°53'28"
19	182.00'	82.77'	42.11'	82.06'	N83°48'42" W	26°03'21"

THIS PLAT IS SUBJECT TO RESTRICTIONS AS REQUIRED BY ACT 288 OF 1967, AS AMENDED ON CERTAIN LOTS WITH RESPECT TO THE REQUIREMENTS OF THE MICHIGAN DEPARTMENT OF ENVIRONMENTAL QUALITY, WHICH ARE RECORDED IN LIBER 417, PAGE 21-27 OF RECORDS OF THIS COUNTY.



(G-3)SW CORNER SECTION 3,  
T14N-R6W, ISABELLA CO., MI.  
L.C.R.C. LIBER 5, PAGE 119

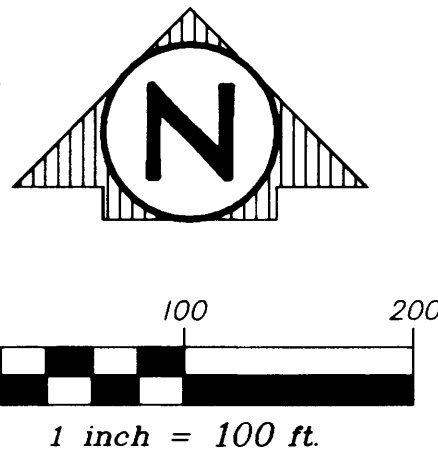
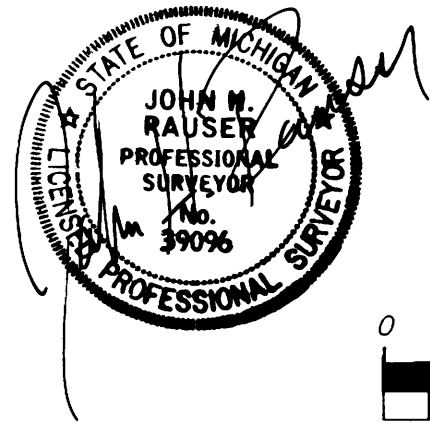
66051



### ROWE INCORPORATED

PROFESSIONAL ENGINEERS & LAND SURVEYORS  
127 SOUTH MAIN STREET  
MT. PLEASANT, MICHIGAN 48858  
Ph. (517) 772-2138

SHEET 1 OF 4



# FORESTA VERDE

PART OF THE SOUTHWEST 1/4 AND THE SOUTHEAST 1/4  
OF SECTION 3, T14N-R6W, VILLAGE OF LAKE ISABELLA  
ISABELLA COUNTY, MICHIGAN

(H-1) N1/4 CORNER  
SECTION 3, T14N, R6W,  
ISABELLA CO., MI  
L.C.R.C. LIBER 4, PAGE 1403

**BENCHMARK #1**  
SET SPIKE IN NORTH FACE  
OF TWIN 24" OAK 60 FEET  
APPROXIMATELY 33' NORTH &  
11' EAST OF THE SW CORNER  
OF LOT 9. ELEVATION =  
933.53 FEET (N.G.V.D. 1929)

**BENCHMARK #2**  
SET SPIKE IN NORTH FACE  
OF 26" MAPLE  
APPROXIMATELY 37 FEET WEST &  
87 FEET NORTH OF THE SE CORNER  
LOT 11. ELEVATION =  
937.87 FEET (N.G.V.D. 1929)

FLOODPLAIN CONTOUR  
AS ESTABLISHED BY THE  
MICHIGAN DEPARTMENT OF  
ENVIRONMENTAL QUALITY  
ELEVATION = 899.0 FEET  
N.G.V. DATUM 1929

**LAKE ISABELLA**  
LEGAL LAKE LEVEL 895.0 (N.G.V.D. 1929)  
(NOVEMBER 11, 1996)

WATER'S EDGE  
JUNE 6, 2000  
ELEV = 896.1'  
N.G.V.D. 1929

**LAKE ISABELLA**  
LEGAL LAKE LEVEL 895.0 (N.G.V.D. 1929)  
(NOVEMBER 11, 1996)

FLOODPLAIN CONTOUR  
AS ESTABLISHED BY THE  
DEPARTMENT OF  
ENVIRONMENTAL QUALITY,  
ELEVATION = 899.0 FEET  
(N.G.V. DATUM 1929)

N 89° 44' 16" E 301.51'

N 76° 21' 39" E 304.96'

N 88° 14' 03" E 250.62'

N 68° 26' 28" E 125.91'

N 76° 31' 46" E 131.21'

N 08° 50' 50" W 81'

N 89° 44' 16" E 301.51'

WATERS EDGE  
JUNE 6, 2000  
ELEV = 896.1'  
N.G.V.D. 1929

N 02° 22' 49" E 3793.42'

N 02° 26' 15" E 322.41'

N 02° 22' 49" E 3793.42'

N 02° 26' 15" E 322.41'

N 02° 22' 49" E 3793.42'

N 02° 26' 15" E 322.41'

N 02° 22' 49" E 3793.42'

N 02° 26' 15" E 322.41'

N 02° 22' 49" E 3793.42'

N 02° 26' 15" E 322.41'

N 02° 22' 49" E 3793.42'

N 02° 26' 15" E 322.41'

N 02° 22' 49" E 3793.42'

N 02° 26' 15" E 322.41'

N 02° 22' 49" E 3793.42'

N 02° 26' 15" E 322.41'

N 02° 22' 49" E 3793.42'

N 02° 26' 15" E 322.41'

N 02° 22' 49" E 3793.42'

N 02° 26' 15" E 322.41'

N 02° 22' 49" E 3793.42'

N 02° 26' 15" E 322.41'

N 02° 22' 49" E 3793.42'

N 02° 26' 15" E 322.41'

N 02° 22' 49" E 3793.42'

N 02° 26' 15" E 322.41'

N 02° 22' 49" E 3793.42'

N 02° 26' 15" E 322.41'

N 02° 22' 49" E 3793.42'

N 02° 26' 15" E 322.41'

N 02° 22' 49" E 3793.42'

N 02° 26' 15" E 322.41'

N 02° 22' 49" E 3793.42'

N 02° 26' 15" E 322.41'

N 02° 22' 49" E 3793.42'

N 02° 26' 15" E 322.41'

N 02° 22' 49" E 3793.42'

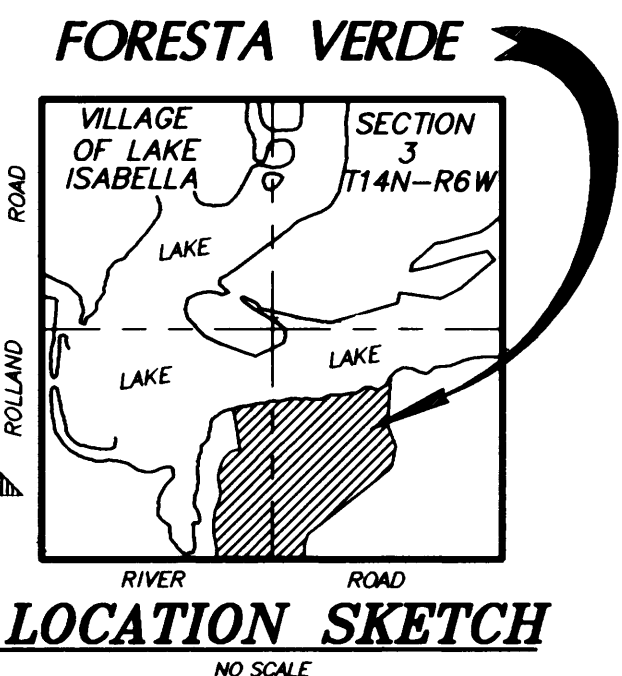
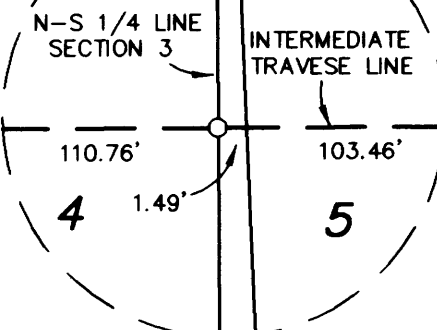
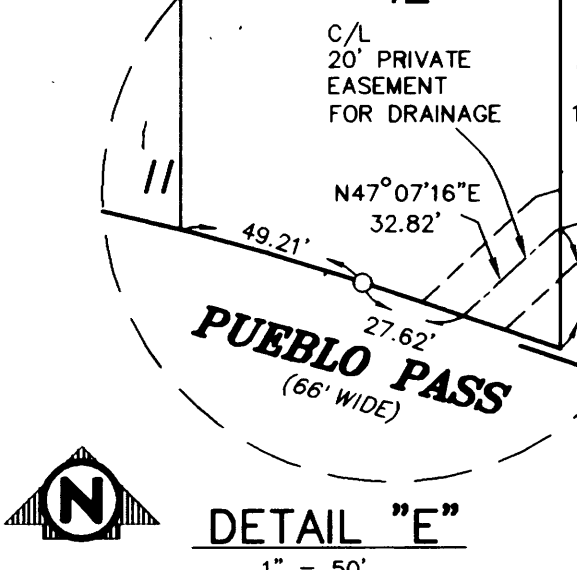
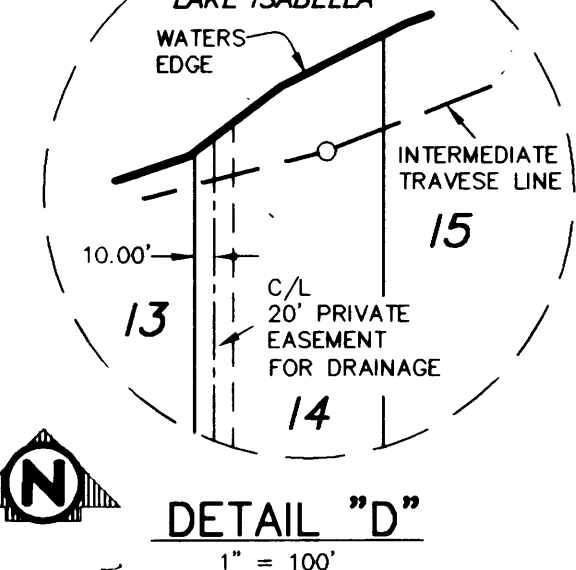
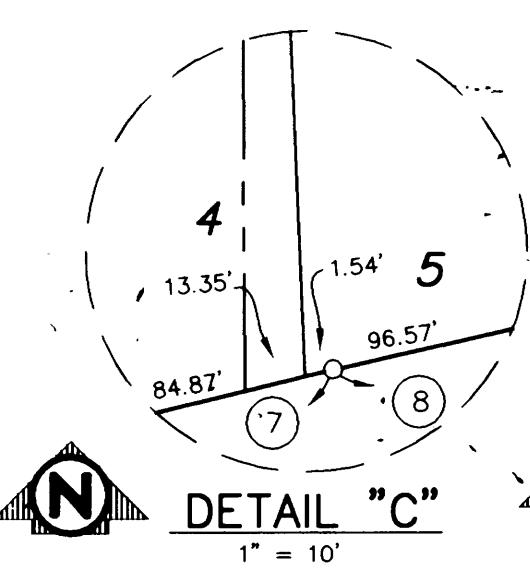
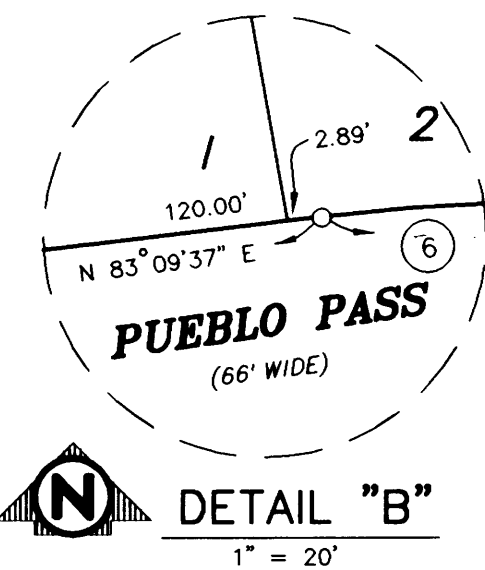
N 02° 26' 15" E 322.41'

THIS PLAT IS SUBJECT TO RESTRICTIONS AS REQUIRED BY ACT 288 OF  
1967, AS AMENDED ON CERTAIN LOTS WITH RESPECT TO THE  
REQUIREMENTS OF THE MICHIGAN DEPARTMENT OF ENVIRONMENTAL QUALITY, MATCH LINE  
WHICH ARE RECORDED IN LIBER 497, PAGE 312 OF RECORDS OF  
THIS COUNTY. SEE SHEET 1 OF 4

### LEGEND

- ALL DIMENSIONS ARE GIVEN IN FEET.
- ALL CURVE DIMENSIONS ARE CHORD LENGTHS.
- ① INDICATES CURVE NUMBER.
- MONUMENTS CONSISTING OF 1/2 INCH DIAMETER STEEL ROD 36 INCHES IN LENGTH COMPLETELY ENCASED IN CONCRETE 4 INCHES IN DIAMETER HAVE BEEN PLACED AT POINTS MARKED "O".
- MONUMENTS CONSISTING OF 1/2 INCH DIAMETER STEEL ROD 36 INCHES IN LENGTH COMPLETELY ENCASED IN CONCRETE 4 INCHES IN DIAMETER HAVE BEEN FOUND AT POINTS MARKED "•".
- LOT CORNERS HAVE BEEN MARKED WITH RE-ROD, 1/2 INCH IN DIAMETER 18 INCHES IN LENGTH.
- BEARINGS WERE ESTABLISHED FROM "PLATINUS POINTE NO. 2", RECORDED IN LIBER 10 OF PLATS, PAGE 695.
- ALL BEARINGS ARE IN DEGREES (°), MINUTES (') AND SECONDS (").
- (R) - INDICATES RADIAL LINE.  
(NR) - INDICATES NONRADIAL LINE.
- (20) DISTANCE FROM INTERMEDIATE TRAVERSE LINE TO THE FLOODPLAIN.
- ALL WATER FRONT LOT LINES EXTEND TO THE WATER'S EDGE.

CURVE TABLE						
CURVE	RADIUS	LENGTH	TANGENT	CHORD	BEARING	DELTA
6	248.00'	112.78'	57.38'	111.81'	S83°48'42" E	26°03'21"
7	332.00'	190.59'	98.00'	187.98'	S87°13'46" E	32°53'28"
8	363.00'	256.36'	133.79'	251.06'	S83°26'36" E	40°27'48"
9	432.00'	236.68'	121.39'	233.73'	S78°54'25" E	31°23'27"
10	648.00'	260.61'	132.09'	258.86'	S83°04'52" E	23°02'34"
11	232.00'	195.58'	104.03'	189.84'	N84°17'22" E	48°18'07"
12	248.00'	341.90'	204.40'	315.46'	S80°23'56" E	78°59'21"



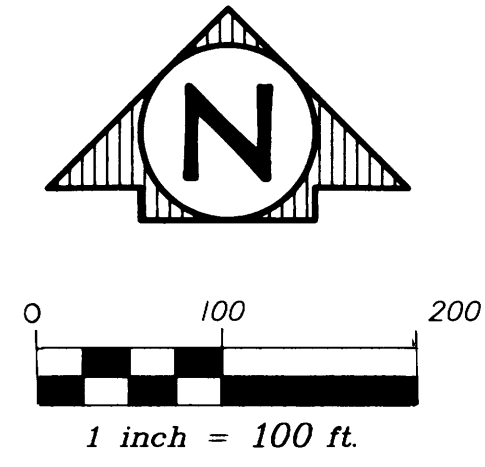
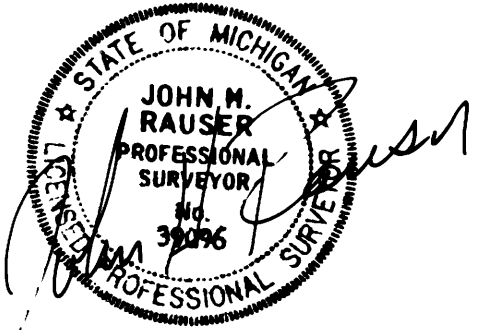
**ROWE INCORPORATED**  
PROFESSIONAL ENGINEERS & LAND SURVEYORS  
127 SOUTH MAIN STREET  
MT. PLEASANT, MICHIGAN 48858  
Ph. (517) 772-2138

66051

SHEET 2 OF 4

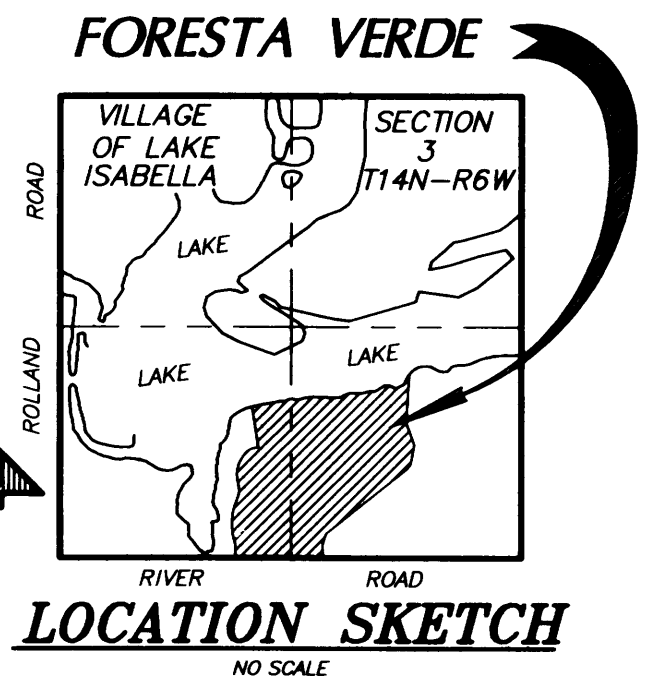
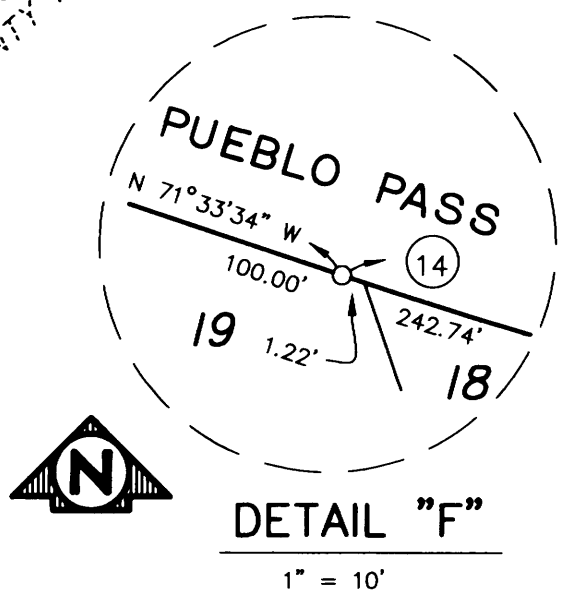
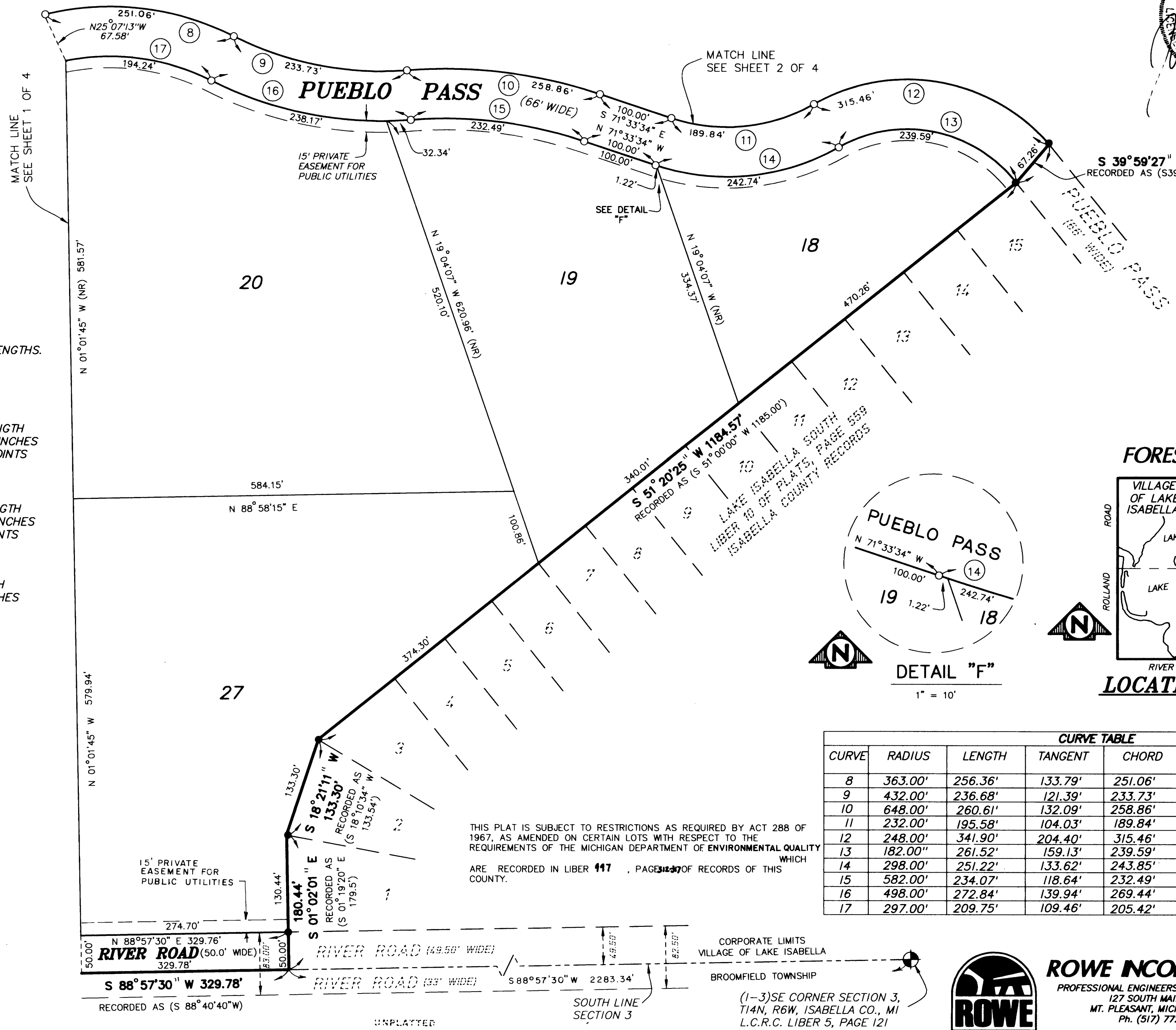
# FORESTA VERDE

PART OF THE SOUTHWEST 1/4 AND THE SOUTHEAST 1/4  
OF SECTION 3, T14N-R6W, VILLAGE OF LAKE ISABELLA  
ISABELLA COUNTY, MICHIGAN



### LEGEND

1. ALL DIMENSIONS ARE GIVEN IN FEET.
2. ALL CURVE DIMENSIONS ARE CHORD LENGTHS.
3. ① INDICATES CURVE NUMBER.
4. MONUMENTS CONSISTING OF 1/2 INCH DIAMETER STEEL ROD 36 INCHES IN LENGTH COMPLETELY ENCASED IN CONCRETE 4 INCHES IN DIAMETER HAVE BEEN PLACED AT POINTS MARKED "○".
5. MONUMENTS CONSISTING OF 1/2 INCH DIAMETER STEEL ROD 36 INCHES IN LENGTH COMPLETELY ENCASED IN CONCRETE 4 INCHES IN DIAMETER HAVE BEEN FOUND AT POINTS MARKED "●".
6. LOT CORNERS HAVE BEEN MARKED WITH RE-ROD, 1/2 INCH IN DIAMETER 18 INCHES IN LENGTH.
7. BEARINGS WERE ESTABLISHED FROM "PLATINUS POINTE NO. 2", RECORDED IN LIBER 10 OF PLATS, PAGE 695.
8. ALL BEARINGS ARE IN DEGREES (°), MINUTES (') AND SECONDS (").
9. (R) - INDICATES RADIAL LINE.  
(NR) - INDICATES NONRADIAL LINE.
10. (20) DISTANCE FROM INTERMEDIATE TRAVERSE LINE TO THE FLOODPLAIN.
11. ALL WATER FRONT LOT LINES EXTEND TO THE WATER'S EDGE.



CURVE TABLE						
CURVE	RADIUS	LENGTH	TANGENT	CHORD	BEARING	DELTA
8	363.00'	256.36'	133.79'	251.06'	S83°26'36"E	40°27'48"
9	432.00'	236.68'	121.39'	233.73'	S78°54'25"E	31°23'27"
10	648.00'	260.61'	132.09'	258.86'	S83°04'52"E	23°02'34"
11	232.00'	195.58'	104.03'	189.84'	N84°17'22"E	48°18'07"
12	248.00'	341.90'	204.40'	315.46'	S80°23'56"E	78°59'21"
13	182.00'	261.52'	159.13'	239.59'	N78°42'37"W	82°19'42"
14	298.00'	251.22'	133.62'	243.85'	S84°17'22"W	48°18'07"
15	582.00'	234.07'	118.64'	232.49'	N83°04'52"W	23°02'34"
16	498.00'	272.84'	139.94'	269.44'	N78°54'25"W	31°23'27"
17	297.00'	209.75'	109.46'	205.42'	N83°26'36"W	40°27'48"



**ROWE INCORPORATED**  
PROFESSIONAL ENGINEERS & LAND SURVEYORS  
127 SOUTH MAIN STREET  
MT. PLEASANT, MICHIGAN 48858  
Ph. (517) 772-2138

66051

CERTIFICATE OF COUNTY ROAD COMMISSIONERS

APPROVED ON ~~August 3~~ <sup>July 28</sup>, 2000, AS COMPLYING WITH SECTION 183 OF ACT 288 P.A. 1967 AND THE APPLICABLE PUBLISHED RULES AND REGULATIONS OF THE BOARD OF ROAD COMMISSIONERS OF ISABELLA CO.

James McDonald  
JAMES MCDONALD  
COMMISSIONER

Gale Willoughby  
GALE WILLOUGHBY  
MEMBER

Donald P. Cotter  
DONALD P. COTTER  
MEMBER

# FORESTA VERDE

## PART OF THE SOUTHWEST 1/4 AND THE SOUTHEAST 1/4, OF SECTION 3, T14N-R6W, VILLAGE OF LAKE ISABELLA, ISABELLA COUNTY, MICHIGAN

PROPRIETOR'S CERTIFICATE

FORESTA VERDE LAND COMPANY, INC., A CORPORATION DULY ORGANIZED AND EXISTING UNDER THE LAWS OF THE STATE OF MICHIGAN BY, PATRICIA L. COOLEY, PRESIDENT, AS PROPRIETOR, HAS CAUSED THE LAND EMBRACED IN THIS PLAT TO BE SURVEYED, DIVIDED, MAPPED AND DEDICATED AS REPRESENTED ON THIS PLAT AND THAT THE ROADS SHOWN ARE FOR THE USE OF THE PUBLIC; AND THAT THE PUBLIC UTILITY EASEMENTS ARE PRIVATE EASEMENTS AND THAT ALL OTHER EASEMENTS ARE FOR THE USES SHOWN ON THE PLAT; AND THAT LOTS 1 THROUGH 17, INCLUSIVE, ABUTTING LAKE ISABELLA EXTEND TO THE WATER'S EDGE AND ARE SUBJECT TO THE CORRELATED RIGHTS OF OTHER RIPARIAN OWNERS AND TO THE PUBLIC TRUST IN THESE WATERS.

WITNESSES:

FORESTA VERDE LAND COMPANY, INC.  
5201 SOUTH MISSION ROAD  
MT. PLEASANT, MICHIGAN 48858

Franklin W. Cooley  
FRANKLIN W. COOLEY

Patricia L. Cooley  
PATRICIA L. COOLEY  
PRESIDENT

Wayne L. Cooley  
WAYNE L. COOLEY

STATE OF MICHIGAN )  
COUNTY OF ISABELLA ) SS

PERSONALLY CAME BEFORE ME THIS <sup>28<sup>th</sup></sup> DAY OF JULY, 2000, PATRICIA L. COOLEY, PRESIDENT, OF THE ABOVE NAMED CORPORATION, TO ME KNOWN TO BE THE PERSON WHO EXECUTED THE FOREGOING INSTRUMENT, AND TO ME KNOWN TO BE SUCH PRESIDENT OF SAID CORPORATION, AND ACKNOWLEDGED THAT SHE EXECUTED THE FOREGOING INSTRUMENT AS SUCH OFFICER AS THE FREE ACT AND DEED OF SAID CORPORATION, BY ITS AUTHORITY.

MY COMMISSION EXPIRES: JANUARY 1, 2004  
ACTING WITHIN ISABELLA COUNTY, MICHIGAN

Franklin W. Cooley  
FRANKLIN W. COOLEY  
NOTARY PUBLIC,  
CLARE COUNTY, MICHIGAN

COUNTY TREASURER'S CERTIFICATE

THE RECORDS IN MY OFFICE SHOW NO UNPAID TAXES OR SPECIAL ASSESSMENTS FOR THE FIVE YEARS PRECEDING JULY 28, 2000, INVOLVING THE LANDS INCLUDED IN THE PLAT.

Steven W. Pickens  
STEVEN W. PICKENS,  
ISABELLA COUNTY TREASURER

COUNTY DRAIN COMMISSIONER'S CERTIFICATE

APPROVED ON JULY 28, 2000, AS COMPLYING WITH SECTION 192 OF ACT 288 P.A. 1967, AND THE APPLICABLE RULES AND REGULATIONS PUBLISHED BY MY OFFICE IN THE COUNTY OF ISABELLA.

Gary J. McBride  
GARY J. MCBRIDE,  
ISABELLA COUNTY DRAIN COMMISSIONER

CERTIFICATE OF MUNICIPAL APPROVAL

AUGUST

I CERTIFY THAT THIS PLAT WAS APPROVED BY THE VILLAGE BOARD, OF LAKE ISABELLA, AT A MEETING HELD JULY 15, 2000, AND WAS REVIEWED AND FOUND TO BE IN COMPLIANCE WITH ACT 288, P.A., 1967. PRELIMINARY PLAT APPROVAL BY CENTRAL MICHIGAN DISTRICT HEALTH DEPARTMENT DATED FEBRUARY 22, 2000.

Beverly G. Pillar  
Beverly G. Pillar  
VILLAGE CLERK



**ROWE INCORPORATED**  
PROFESSIONAL ENGINEERS & LAND SURVEYORS  
127 SOUTH MAIN STREET  
MT. PLEASANT, MICHIGAN 48858  
Ph. (517) 772-2138

COUNTY PLAT BOARD CERTIFICATE

AUGUST  
THIS PLAT HAS BEEN REVIEWED AND IS APPROVED BY THE ISABELLA COUNTY PLAT BOARD ON ~~JULY 24~~ <sup>AUGUST 24</sup>, 2000, AS BEING IN COMPLIANCE WITH ALL OF THE PROVISIONS OF ACT 288, P.A. 1967, AND THE PLAT BOARD'S APPLICABLE RULES AND REGULATIONS.

Steven W. Pickens  
STEVEN W. PICKENS,  
COUNTY TREASURER

Betty Prout  
BETTY PROUT,  
COUNTY CLERK

Sharon A. Brown  
SHARON A. BROWN,  
REGISTER OF DEEDS

SURVEYOR'S CERTIFICATE

I, JOHN H. RAUSER, SURVEYOR, CERTIFY THAT I HAVE SURVEYED, DIVIDED, AND MAPPED THE LAND SHOWN ON THIS PLAT, DESCRIBED AS FOLLOWS:

FORESTA VERDE

PART OF THE SOUTHWEST 1/4 AND THE SOUTHEAST 1/4 OF SECTION 3, T14N-R6W, VILLAGE OF LAKE ISABELLA, ISABELLA COUNTY, MICHIGAN. DESCRIBED AS BEGINNING AT THE SOUTH 1/4 CORNER OF SAID SECTION 3; THENCE S88°59'30"W, ALONG THE SOUTH LINE OF SECTION 3, 608.33' FEET; THENCE N01°01'45"W, 150.73 FEET; THENCE ALONG A 333.00 FOOT RADIUS CURVE TO THE LEFT (CHORD BEARING AND DISTANCE N08°58'52"W, 92.13 FEET, A CENTRAL ANGLE OF 15°54'13"), AN ARC LENGTH OF 92.43 FEET; THENCE ALONG A 607.00 FOOT RADIUS CURVE TO THE RIGHT (CHORD BEARING AND DISTANCE N03°45'02"E, 428.79 FEET, A CENTRAL ANGLE OF 41°22'00"), AN ARC LENGTH OF 438.24 FEET; THENCE ALONG A 333.00 FOOT RADIUS CURVE TO THE LEFT (CHORD BEARING AND DISTANCE N03°52'02"E, 233.96' FEET, A CENTRAL ANGLE OF 41°07'58"), AN ARC LENGTH OF 239.06 FEET; THENCE ALONG A 267.00 FOOT RADIUS CURVE TO THE RIGHT (CHORD BEARING AND DISTANCE N06°32'09"E, 210.66 FEET, A CENTRAL ANGLE OF 46°28'12"), AN ARC LENGTH OF 216.55 FEET; THENCE N29°46'15"E, 59.84 FEET; THENCE ALONG A 117.00 FOOT RADIUS CURVE TO THE RIGHT (CHORD BEARING AND DISTANCE N56°27'56"E, 105.12 FEET, A CENTRAL ANGLE OF 53°23'23"), AN ARC LENGTH OF 109.02 FEET; THENCE N83°09'37"E, 60.15 FEET; THENCE N12°38'37"W, 66.34 FEET; THENCE S83°09'38"W, 20.00 FEET; THENCE N08°50'50"W, 240.38 FEET TO A POINT WHICH IS S08°50'50"E, 61 FEET FROM THE WATER'S EDGE OF LAKE ISABELLA; THENCE ALONG AN INTERMEDIATE TRAVERSE LINE ON THE SOUTHERLY BANK OF SAID LAKE ISABELLA THE FOLLOWING SEVEN COURSES: 1) N76°31'46"E, 131.21 FEET; 2) THENCE N68°26'28"E, 125.91 FEET; 3) THENCE N89°44'16"E, 301.51 FEET; 4) THENCE N88°14'03"E, 250.62 FEET; 5) THENCE N76°21'39"E, 304.96 FEET; 6) THENCE N75°30'26"E, 330.13 FEET; 7) THENCE N68°45'41"E, 369.22 FEET TO A POINT ON THE WESTERLY LINE OF THE RECORDED PLAT OF LAKE ISABELLA SOUTH ( RECORDED IN LIBER 10 OF PLATS, PAGE 559) SAID POINT ALSO BEING S03°49'44"W, 66 FEET FROM THE EDGE OF WATER (RECORDED AS S03°30'W); THENCE ALONG THE WESTERLY LINE OF SAID RECORDED PLAT OF LAKE ISABELLA SOUTH THE FOLLOWING SEVEN COURSES: 1) S03°49'44"W, 314.18 FEET (RECORDED AS S03°30'W); 2) S20°43'58"E, 269.82 FEET (RECORDED AS S21°E, 270.00 FEET); 3) S10°54'49"W, 226.70 FEET (RECORDED AS S10°30'W, 227.19 FEET); 4) S39°59'27"W, 67.26 FEET (RECORDED AS S39°46'26"W, 67.29 FEET); 5) S51°20'25"W, 1184.57 FEET (RECORDED AS S51°W, 1185.00 FEET); 6) S18°21'11"W, 133.30 FEET (RECORDED AS S18°10'34"W, 133.54 FEET); 7) S01°02'01"E, 180.44 FEET (RECORDED AS S01°19'20"E, 179.5 FEET), TO A POINT ON THE SOUTH LINE OF SAID SECTION 3; THENCE S88°57'30"W, ALONG SAID SOUTH LINE OF SECTION 3, 329.78 FEET (RECORDED AS S88°40'40"W), TO THE POINT OF BEGINNING. CONTAINING 56.51 ACRES OF LAND, CONSISTING OF TWENTY-SEVEN (27) NUMBERED LOTS, INCLUDING ALL LANDS BETWEEN INTERMEDIATE TRAVERSE AND THE WATERS EDGE.

THAT I HAVE MADE SUCH SURVEY, LAND-DIVISION AND PLAT BY THE DIRECTION OF THE OWNERS OF SUCH LAND.

THAT SUCH PLAT IS A CORRECT REPRESENTATION OF ALL THE EXTERIOR BOUNDARIES OF THE LAND SURVEYED AND THE SUBDIVISION OF IT.

THAT THE REQUIRED MONUMENTS AND LOT MARKERS HAVE BEEN LOCATED IN THE GROUND OR THAT SURETY HAS BEEN DEPOSITED WITH THE MUNICIPALITY, AS REQUIRED BY SECTION 125 OF THE ACT.

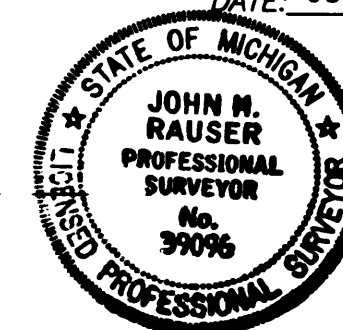
THAT THE ACCURACY OF SURVEY IS WITHIN THE LIMITS REQUIRED BY SECTION 126 OF THE ACT.

THAT THE BEARINGS SHOWN ON THE PLAT ARE EXPRESSED AS REQUIRED BY SECTION 126 (3) OF THE ACT AND AS EXPLAINED IN THE LEGEND.

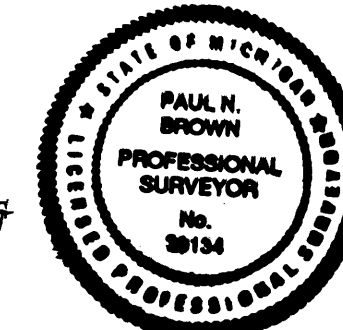
ROWE INCORPORATED  
127 S. MAIN STREET  
MT. PLEASANT,  
MICHIGAN 48858

DATE: JULY 28, 2000

John H. Rauser  
JOHN H. RAUSER  
P.S. No. 39096



Paul N. Brown  
PAUL N. BROWN, PS, VICE-PRESIDENT  
P.S. No. 33134



RECORDING CERTIFICATE

STATE OF MICHIGAN )  
ISABELLA COUNTY )

THIS PLAT WAS RECEIVED FOR RECORDING ON THE 13th DAY OF October A.D., 2000, AT 11:39 AM,  
RECORDED IN LIBER 10 OF PLATS ON PAGES 703

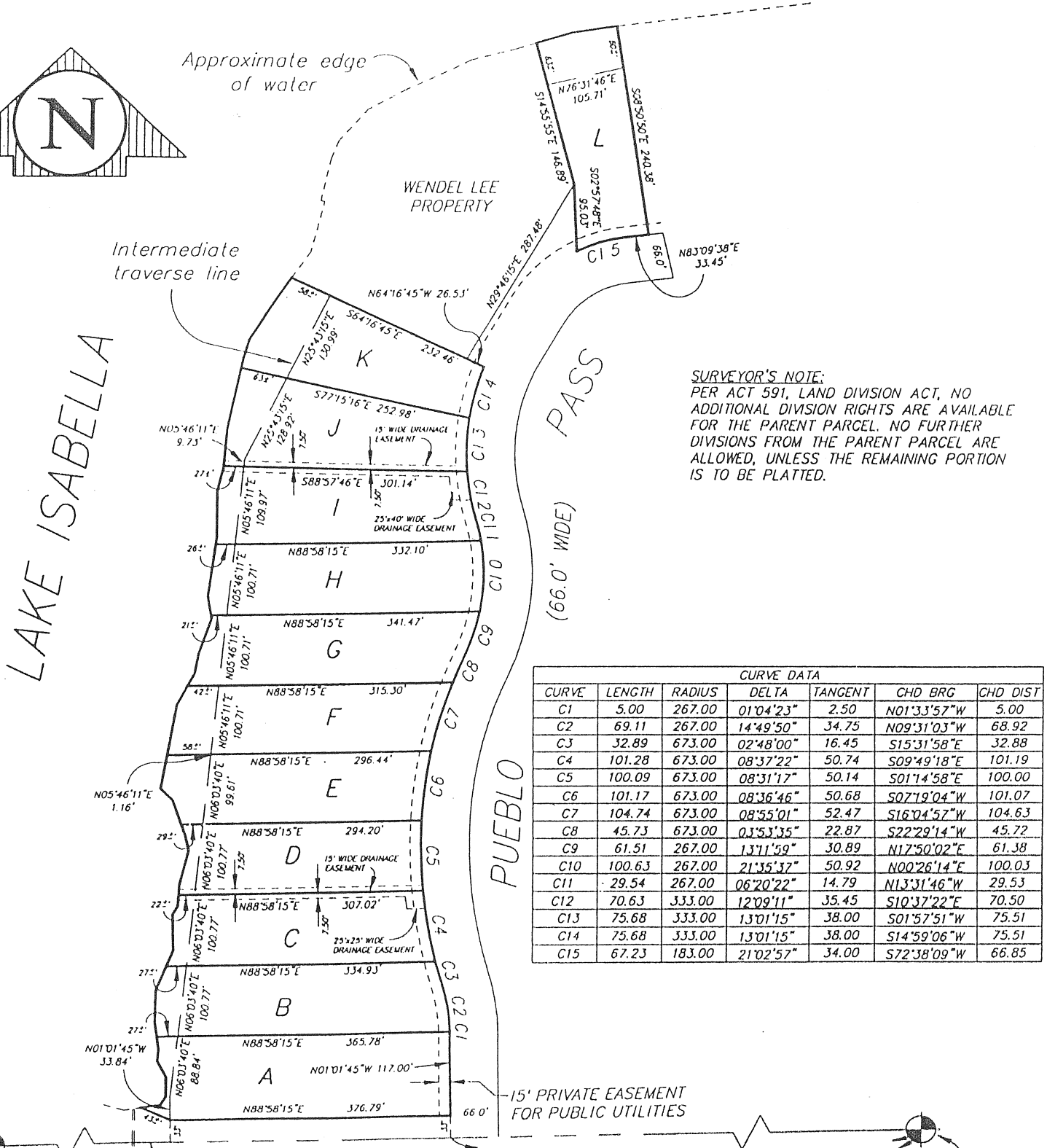
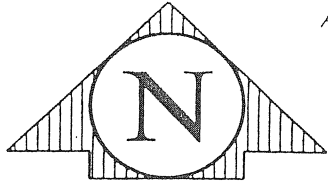
Sharon A. Brown  
SHARON A. BROWN,  
REGISTER OF DEEDS

66051

# CERTIFIED SURVEY

**CERTIFICATE:**

HEREBY CERTIFY THAT THE ATTACHED SURVEY HAS BEEN COMPLETED IN ACCORDANCE WITH PUBLIC ACT 132 OF 1970, AS AMENDED AND THAT THE RATIO OF CLOSURE OF LATITUDES AND DEPARTURES IS 1 in 10,000 or 0.15', WHICHEVER IS GREATER.



**SURVEYOR'S NOTE:**  
 PER ACT 591, LAND DIVISION ACT, NO ADDITIONAL DIVISION RIGHTS ARE AVAILABLE FOR THE PARENT PARCEL. NO FURTHER DIVISIONS FROM THE PARENT PARCEL ARE ALLOWED, UNLESS THE REMAINING PORTION IS TO BE PLATTED.

CURVE DATA						
CURVE	LENGTH	RADIUS	DELTA	TANGENT	CHD BRG	CHD DIST
C1	5.00	267.00	01°04'23"	2.50	N01°33'57"W	5.00
C2	69.11	267.00	14°49'50"	34.75	N09°31'03"W	68.92
C3	32.89	673.00	02°48'00"	16.45	S15°31'58"E	32.88
C4	101.28	673.00	08°37'22"	50.74	S09°49'18"E	101.19
C5	100.09	673.00	08°31'12"	50.14	S01°14'58"E	100.00
C6	101.17	673.00	08°36'46"	50.68	S07°19'04"W	101.07
C7	104.74	673.00	08°55'01"	52.47	S16°04'57"W	104.63
C8	45.73	673.00	01°53'35"	22.87	S22°29'14"W	45.72
C9	61.51	267.00	13°11'59"	30.89	N17°50'02"E	61.38
C10	100.63	267.00	21°35'37"	50.92	N00°26'14"E	100.03
C11	29.54	267.00	06°20'22"	14.79	N13°31'46"W	29.53
C12	70.63	333.00	12°09'11"	35.45	S10°37'22"E	70.50
C13	75.68	333.00	13°01'15"	38.00	S01°57'51"W	75.51
C14	75.68	333.00	13°01'15"	38.00	S14°59'06"W	75.51
C15	67.23	183.00	21°02'57"	34.00	S72°38'09"W	66.85

CORNER SEC. 3, T14N-R6W,  
 BROOMFIELD TWP., ISABELLA CO., MI.  
 (G-3) FND. T-IRON  
 136.29 SPIKE IN P.P.  
 116.94 N&T IN 8" PINE  
 Y 30.35 YIELD SIGN POST  
 42.35 ROAD SIGN POST

S 1/4 CORNER SEC. 3, T14N-R6W,  
 BROOMFIELD TWP., ISABELLA CO., MI.  
 (H-3) FND. T-IRON  
 S 21.85 PK 4" BIRCH  
 SW 39.66 PK 10" ELM  
 NW 26.21 PK 8" ELM  
 W 2576.74 SW SEC. COR.

RINGS ARE REFERENCED TO PLAT OF PLATINUS POINTE, LIBER 10 OF PLATS, PAGE 685, ISABELLA CO., MI. RECORDS.  
 FND. T-IRON - SET CAPPED BEYOND #41017 @ - IRON FOUND [ ] - SET LINE STAKE X-X - FENCE (B) - RECORDED (M) - MEASURED