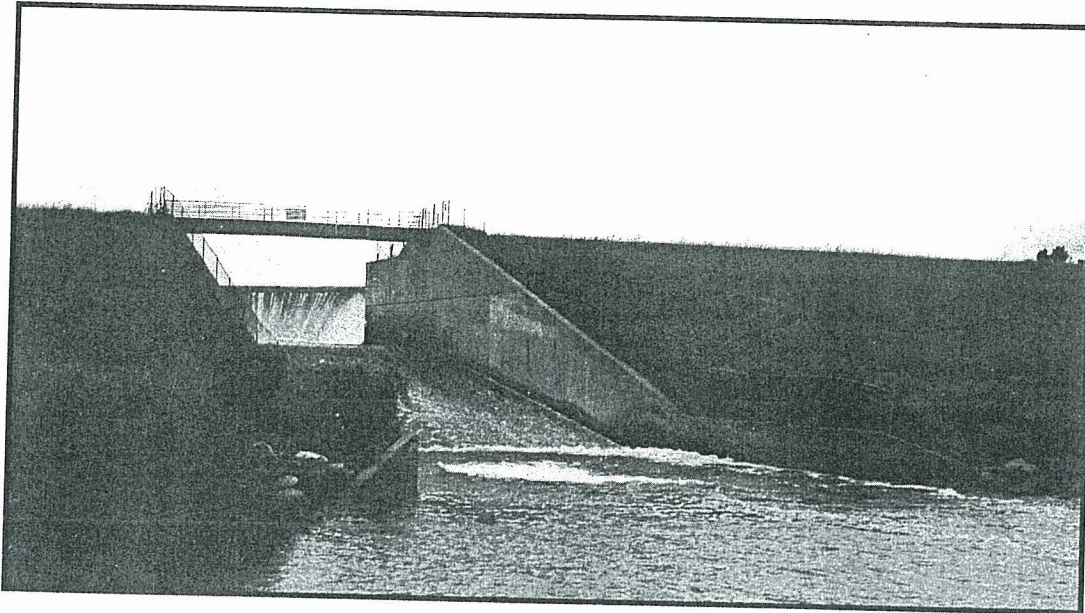


# LAKE ISABELLA DAM INSPECTION

Dam Identification No.: 434  
Hazard Potential: High  
Section 35, T. 15 N. – R.6 W  
Sherman Township, Isabella County, Michigan  
Chippewa River




Per Part 315, Act 451 of 1994  
PREPARED FOR:

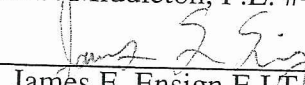
*Isabella County Drain Commissioner  
Rick Jakubiec  
200 N. Main Street  
Mt. Pleasant, MI 48858  
(989) 772-0911 ext. 247  
rjakubiec@isabellacounty.org*

PREPARED BY:

*Spicer Group, Inc.*

INSPECTED BY:

  
Shawn P. Middleton, P.E. #42722

  
James E. Ensign E.I.T.

Date of Inspection: July 23, 2010  
Date of Report: November 30, 2010

Project I.D. Number 118623SG2010

**Spicer**  
group

## TABLE OF CONTENTS

Introduction.....	2
Conclusions and Recommendations .....	3
<i>Overall Condition</i> .....	3
<i>Observed Deficiencies and Recommendations</i> .....	3
<i>Further Detailed Studies and/or Investigations</i> .....	3
<i>Hazard Potential Classification</i> .....	4
Project Information .....	4
<i>General Description of Dam</i> .....	4
<i>Purpose of Dam</i> .....	5
<i>Available Design, Construction and Maintenance Information</i> .....	5
<i>Previous Inspection Reports</i> .....	5
Field Inspection.....	5
Structural Stability .....	7
Hydrology and Hydraulics .....	7
<i>Available Design Data and Hydrologic Design Data</i> .....	7
<i>Contributing Drainage Area</i> .....	7
<i>Design Flood Volume Determination</i> .....	7
<i>Existing Spillway Capacity</i> .....	8
<i>Routing of Spillway Design Flood</i> .....	8
<i>Flood of Record</i> .....	8
Operation and Maintenance .....	8
Emergency Action Plan.....	9
<b>Appendix A</b>	
<i>Dam Inspection Worksheet and Checklist</i>	
<i>MDEQ Inventory of Dam</i>	
<i>MDEQ Hydrologic Information</i>	
<b>Appendix B</b>	
<i>Site Location Map</i>	
<b>Appendix C</b>	
<i>Previous Inspection Reports</i>	
<i>Updated Notification Call List</i>	
<i>2008 Letter From SGI</i>	
<b>Appendix D</b>	
<i>Photographs</i>	
<b>Appendix E</b>	
<i>Spillway Rating Curve</i>	