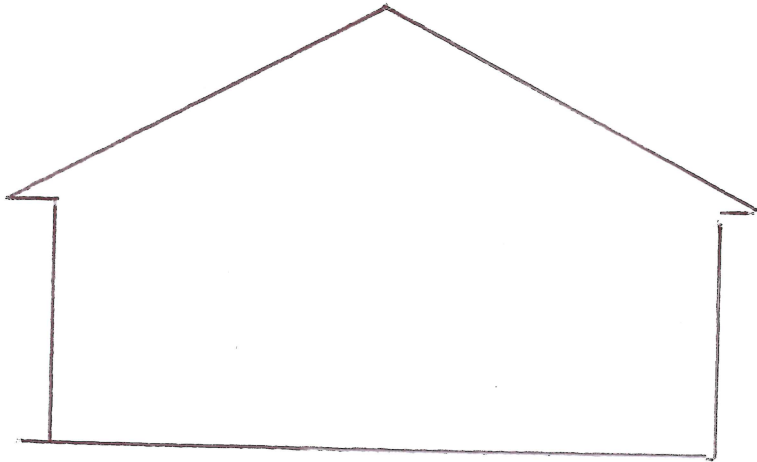
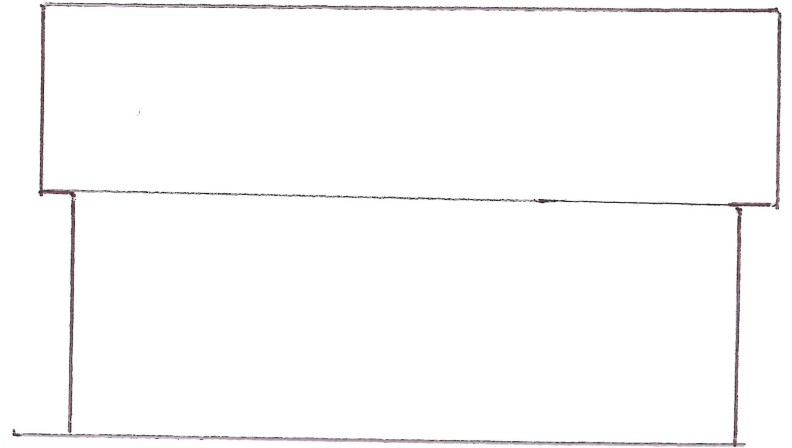


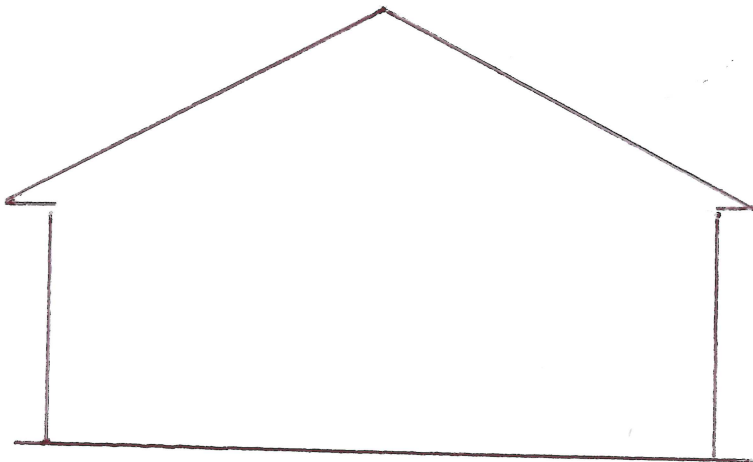
Professional/CAD drawings are NOT required. Drawings need to accompany your application that illustrates and identifies the exterior finishes and items included to meet the minimum point requirements. The above illustration shows sufficient detail to accompany your permit application. If the footprint of your building has either a square or rectangle footprint, you may use the blank illustrations on the second page of this guide to complete your drawings.



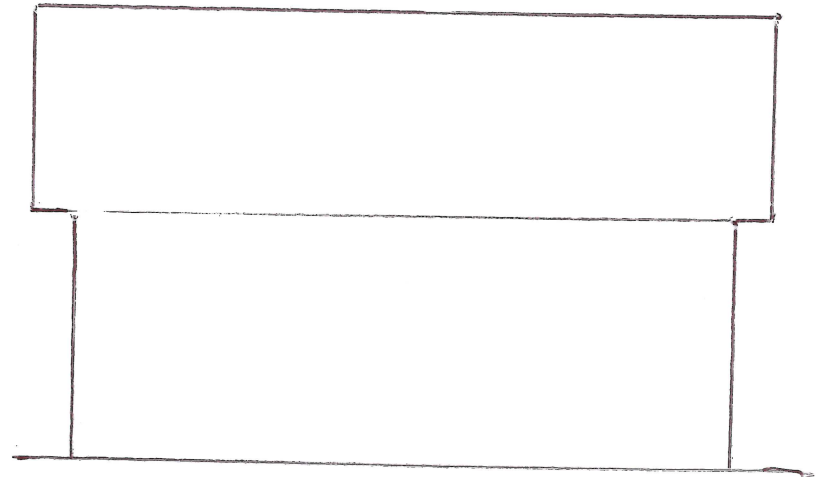
FRONT



SIDE 1



REAR



SIDE 2