

February 8, 2018

[citylp.com](http://citylp.com)



## Lincoln Park Community News & Events



### City Offices Closed for Upcoming Holiday

City Offices will be closed Monday February 19th in observance of Presidents Day.

Trash collection will maintain its normal schedule.



### What do you think about the new website?

The City of Lincoln Parks new website has been live for almost a week. We want your feedback!

The website will continue to grow and change based off community feedback.

We encourage you to get to know our website as it was designed primarily with citizens in mind. Take advantage of some new features like E-Notify or read through our new citizens guide to winter in Lincoln Park.

Visit [www.Citylp.com](http://www.Citylp.com) to view it now!



### Are you registered for Nixle?

Nixle is a free service that allows residents the ability to subscribe and receive notification alerts for weather

related or emergency events.

Nixle allows police to log onto a secure site and enter a message that can be sent

to the entire community or a specific area within the community. Alerts can be sent to thousands of people within minutes and can range from severe weather or emergency activity in your area.

To subscribe, click on the above Nixle logo and follow the simple online instructions. Subscribers manage their own profile online and can cancel at any time.

[Subscribe Today!](#)



### Sign up for classes!

Lincoln Park Parks & Recreation is offering many fun and exciting classes to stay fit and active in the new year.

Classes for all ages and abilities are available, such as Cake Decorating taught by Angela from Angel's Bake N Cakes, Cardio Drumming, Senior Fitness Classes and Zumba.

Sign up for classes [here](#).



### Sarge & Max Officially Sworn In

Lincoln Park Police Officers Harris and Parker introduce to the community the department's new K-9's at the February 5th City Council Meeting.

Sarge & Max have already been hard at work, assisting their proud handlers as they keep the community safe.

More pictures [here](#).

---

## Lincoln Park & Melvindale share recreational facilities and programs at residential rates

---

Did you know as part of the joint resolution signed last fall between the City of Lincoln Park and the City of Melvindale, residents of each city can use both cities' facilities at residential rates?

This program allows for residents to enjoy and participate in recreational programming offered by each city.





Lincoln Park residents can take advantage of residential rates and enjoy programming offered by the Kessey Field House and the City of Melvindale's outdoor pool.

Melvindale residents can also enjoy residential rates when they take part in programming offered at the Lincoln Park Community Center, Kennedy Memorial Building, and all other recreational programming.

Simply show you're a resident of either city when utilizing one of the above facilities to get residential rates.

Click [here](#) to reserve or find out more about City of Melvindale facilities.

Click [here](#) to reserve or find out more about City of Lincoln Park facilities.

## Simple Recycling Coming Soon!

Announced at the last City Council meeting, Simple Recycling will provide residents the ability to easily recycle clothing, textiles, or other soft goods that would normally be thrown into the trash. This program is not intended, nor will Simple Recycling accept plastics, cardboard, aluminum, or other items of that nature.

There is no cost to the City or residents to utilize this service. A list of accepted items is available on Simple Recycling's [website](#) along with additional FAQ's.

We're still working with Simple Recycling to confirm a start date for this program, but we encourage you to familiarize yourself with the program and provide us with feedback.



**Share your story and help us win \$150,000 in upgrades for the Lincoln Park Community Center**



help The Lincoln Park Community Center win up to \$150,000 in facility upgrades.

You can vote by either leaving a note or sharing a story on the below link. Your story can be short and sweet but needs to describe our community's passion for hockey, the rink project that'd benefit our facility most, and why we should be the next Hockeyville USA 2018.

[Share your story here!](#)

---

## Visit our friends at the Lincoln Park Museum

---



The Lincoln Park Museum will be reopening to the public Saturday, February 3rd after being closed for the month of January for cleaning and updating.

The museum will additionally be hosting an honorary birthday celebration for Lincoln Park native Gary Grimshaw on February 25th. The event is celebrating both the extension of the artist's studio exhibit and to assist in

raising funds for both the museum and The Gary Grimshaw Legacy Foundation.

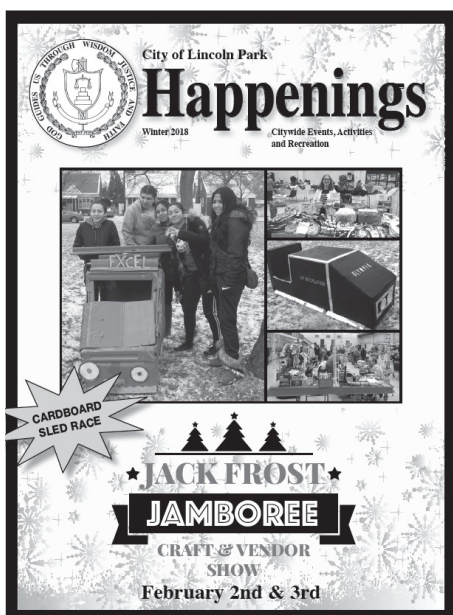
Tickets are available by contacting the museum at 313-386-3137 or [lpmuseum@gmail.com](mailto:lpmuseum@gmail.com).

More information available on The Historical Museum's [website](#).

---

## The Winter 2018 edition of the LP Happenings is now available.

---



A comprehensive newsletter that includes upcoming community events, activities, and more is now available on our website.

Included in this newsletter is a brief letter from the Mayor updating residents on what to expect in the coming months.

Additional seasonal FAQ's are also included. Not sure what to do with your Christmas Tree after the New Year? Look inside to find out!

[Click here to read now.](#)



---

# Service Spotlight

---



## Flushable Wipe's Effect on Our Sewer System

Just because they're marketed as flushable, doesn't mean they're biodegradable! Watch this short video and learn about the strain flushable wipes can cause on our sanitary system.

More info available on the DPS [website](#)

---

City of Lincoln Park  
1355 Southfield Rd  
Lincoln Park, MI 48146  
(313)386-1800  
www.citylp.com



## City of Lincoln Park LP Pride

Report locations that do not clear their  
sidewalks by contacting LP Pride at  
(313) 381-3203



Keeping sidewalks  
clear of snow and ice is  
everyone's  
responsibility! Click  
me for more info.

## Sidewalk Snow Removal

Guidance for  
Lincoln Park  
Residents and  
Businesses

---

## Wondering how you can report a pothole?

---

If you find a pothole on a local, city  
maintained road, our new website has its  
own dedicated "report a pothole" option.

In only a few simple steps, you can ensure  
that pesky pothole on your favorite route to  
work is patched.

Click [here](#) to visit the "report a pothole"  
section of our new website and while you're



## Report a Pothole

[Edit Center Area](#) | [Edit Meta Data](#) | [Admin Panel](#) | [Help](#)

Before reporting a pothole, please ensure it's on one of our local City maintained roads. Wayne County maintained roads include: Fort St, Outer Drive, Dix, and Southfield.

Please report potholes on the above roads to the County at: <https://www.waynecounty.com/departments/publicservices/roads/report-a-road-hazard.aspx>.

For all other roads, use the below form to report a pothole.  
\* designates a required field

### I. Contact Info:

Name\*

Address\*

## GFL Trash Cart Placement Guidelines

Wondering why your trash may have been missed in the past? It could be because the automated trash collection vehicles used by GFL was unable to safely reach your trash cart.

Wondering where to place your trash cart to ensure it's picked up?

Please place trash carts off the pavement and near the edge of your lawn (between the curb and your sidewalk). The automated truck's robotic arm must be able to reach out to the canister and not touch any obstacles

GFL Customer Service: 844-464-3587

# NO

Please **DO NOT** place your container behind any obstructions, such as cars, trees, posts, or in hard to reach areas- and never block a driveway.



## THANK YOU!

For making your trash cart accessible for the GFL Automated Collector Trucks.

[www.gflusa.com](http://www.gflusa.com)

Save time and gas by paying your tax and water bills online.

[Pay Online](#)

---

paperless  
billing



Water &  
Sewer Bills  
By Email

Have your water bill conveniently sent to you email address each quarter!

Click [here](#) for more details!

---



[75 River Rouge Updates](#)

[City Event Calendar](#)

[Happenings Newsletter](#)

[Parks and Recreation Activities](#)

---

[Contact Us](#)

[Government](#)

[Lincoln Park Schools](#)

[Past Issues](#)



STAY CONNECTED:



Forward to a Friend