

March 9, 2018

citylp.com



Lincoln Park Community News & Events



State of the City & Schools

Please join us, March 14, 2018 at 6:30pm as Mayor Karnes and Superintendent Dangerfield present the 2018 State of the City & Schools.

Doors open at 6:00pm and the event will be held at the Lincoln Park High School Auditorium (1701 Champaign). This year's address will highlight accomplishments from the past year and emphasize the vision and goals for 2018 and beyond.

[More details here](#)



Ice Kart Racing Coming To The LP Community Center

Just announced, ice kart racing is an all new event for Lincoln Park and the Downriver area. The event will be held Saturday, April 28th.

Team registration and more information will be posted soon. Assemble your team

now for this limited time event!

For up to date info about the event, follow along [here](#)

Petitions For Primary Election Now Available

Petitions for the primary election to be held in the City of Lincoln Park on August 7, 2018 for the following elected offices: Mayor's Office, City Clerk, Treasurer, and City Council.



Petitions are now available at the City Clerk's office, 1355 Southfield Rd., Lincoln Park, MI during normal business hours Monday- Friday from 8am-4pm.

The **deadline** for returning petitions is April 24, 2018 at 4pm.



Are you registered for Nixle?

Nixle is a free service that allows residents the ability to subscribe and receive notification alerts for weather

related or emergency events.

Nixle allows police to log onto a secure site and enter a message that can be sent to the entire community or a specific area within the community. Alerts can be sent to thousands of people within minutes and can range from severe weather or emergency activity in your area.

To subscribe, click on the above Nixle logo and follow the simple online instructions. Subscribers manage their own profile online and can cancel at any time.

[Subscribe Today!](#)



Sign up for classes!

Lincoln Park Parks & Recreation is offering many fun and exciting classes to stay fit and active in the new year.

Classes for all ages and abilities are available, such as Cake Decorating taught by Angela from Angel's Bake N Cakes, Cardio Drumming, Senior Fitness Classes and Zumba.

Sign up for classes [here](#).

View Our City Council Meetings Online

In case you didn't know, you don't have to wait for replays of the city council meeting on LPTV to stay up to date on what's happening in the city. Instead, visit



the city's Youtube page and you'll find every 2018 City Council meeting available online to view at your convenience.

Visit our channel [here!](#)

Lincoln Park & Melvindale share recreational facilities and programs at residential rates



Did you know as part of the joint resolution signed last fall between the City of Lincoln Park and the City of Melvindale, residents of each city can use both cities' facilities at residential rates?

This program allows for residents to enjoy and participate in recreational programming offered by each city.

Lincoln Park residents can take advantage of residential rates and enjoy programming offered by the Kessey Field House and the City of Melvindale's outdoor pool.

Melvindale residents can also enjoy residential rates when they take part in programming offered at the Lincoln Park Community Center, Kennedy Memorial Building, and all other recreational programming.

Simply show you're a resident of either city when utilizing one of the above facilities to get residential rates.

Click [here](#) to reserve or find out more about City of Melvindale facilities.

Click [here](#) to reserve or find out more about City of Lincoln Park facilities.

Simple Recycling Coming Soon!

Announced at the last City Council meeting, Simple Recycling will provide residents the ability to easily recycle clothing, textiles, or other soft goods that would normally be thrown into the trash. This program is not intended, nor will Simple Recycling accept plastics, cardboard, aluminum, or other items of that nature.

There is no cost to the City or residents to utilize this service. A list of accepted items is available on Simple Recycling's [website](#) along with additional FAQ's.

We're still working with Simple Recycling to confirm a start date for this program, but we encourage you to familiarize yourself with the program and provide us with feedback.

JUST FOLLOW THESE EASY STEPS

STEP 1



Place this bag in your closet and fill it with clothing & shoes

STEP 2



Set your bags out bright and early on your regular collection day

STEP 3



Our friendly drivers will pick up your bags and leave replacement bags behind

Share your story and help us win \$150,000 in upgrades for the Lincoln Park Community Center



Kraft Hockeyville is back! Add your story to vote and help The Lincoln Park Community Center win up to \$150,000 in facility upgrades.

You can vote by either leaving a note or sharing a story on the below link. Your story can be short and sweet but needs to describe our community's passion for hockey, the rink project that'd benefit our facility most, and why we should be the next Hockeyville USA 2018.

[Share your story here!](#)

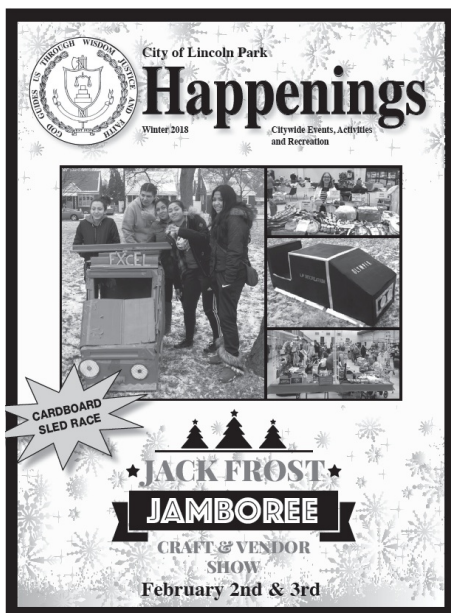
Lincoln Park Library offers residents Overdrive!



Lincoln Park Library offers residents the use of overdrive. This program allows residents with a valid library card the ability to borrow eBooks, audiobooks, and more.

To find out more information, please call the library at 313-381-0374 or visit the library's website @ Lincoln-parklibrary.org

The Winter 2018 edition of the LP Happenings is now available.



A comprehensive newsletter that includes upcoming community events, activities, and more is now available on our website.

Included in this newsletter is a brief letter from the Mayor updating residents on what to expect in the coming months.

Additional seasonal FAQ's are also included. Not sure what to do with your Christmas Tree after the New Year? Look inside to find out!

[Click here to read now.](#)

Service Spotlight



Flushable Wipe's Effect on Our Sewer System

Just because they're marketed as flushable, doesn't mean they're biodegradable! Watch this short video and learn about the strain flushable wipes can cause on our sanitary system.

More info available on the DPS [website](#)

Wondering how you can report a pothole?

[Home](#) > [Departments](#) > [Department Of Public Services](#) > [Report A Pothole](#)

FONT

Report a Pothole

[Edit Center Area](#) [Edit Meta Data](#) [Admin Panel](#) [Help](#)

Before reporting a pothole, please ensure it's on one of our local City maintained roads. Wayne County maintained roads include: Fort St, Outer Drive, Dix, and Southfield.

Please report potholes on the above roads to the County at: <https://www.waynecounty.com/departments/publicservices/roads/report-a-road-hazard.aspx>.

For all other roads, use the below form to report a pothole.
* designates a required field

1. Contact Info:

Name*

Address*

If you find a pothole on a local, city maintained road, our new website has its own dedicated "report a pothole" option.

In only a few simple steps, you can ensure that pesky pothole on your favorite route to work is patched.

Click [here](#) to visit the "report a pothole" section of our new website and while you're there, familiarize yourself with our new site.

Potholes on Wayne county maintained roads can be reported [here](#). Wayne county maintained roads include Fort St, Outer Dr, Dix and Southfield.

GFL Trash Cart Placement Guidelines

Wondering why your trash may have been missed in the past? It could be because the automated trash collection vehicles used by GFL was unable to safely reach your trash cart.

Wondering where to place your trash cart to ensure it's picked up?

Please place trash carts off the pavement and near the edge of your lawn (between the curb and your sidewalk). The automated truck's robotic arm must be able to reach out to the canister and not touch any obstacles

GFL Customer Service: 844-464-3587

NO

Please **DO NOT** place your container behind any obstructions, such as cars, trees, posts, or in hard to reach areas - and never block a driveway.



THANK YOU!

For making your trash cart accessible for the GFL Automated Collector Trucks.

www.gflusa.com

Save time and gas by paying your tax and water bills online.

[Pay Online](#)

paperless
billing



Water &
Sewer Bills
By Email

Have your water bill conveniently sent to you email address
each quarter!

Click
[here](#) for more details!



[75 River Rouge Updates](#)

[City Event Calendar](#)

[Happenings Newsletter](#)

[Parks and Recreation Activities](#)

[Contact Us](#)

[Government](#)

[Lincoln Park Schools](#)

[Past Issues](#)

STAY CONNECTED:



Forward to a Friend