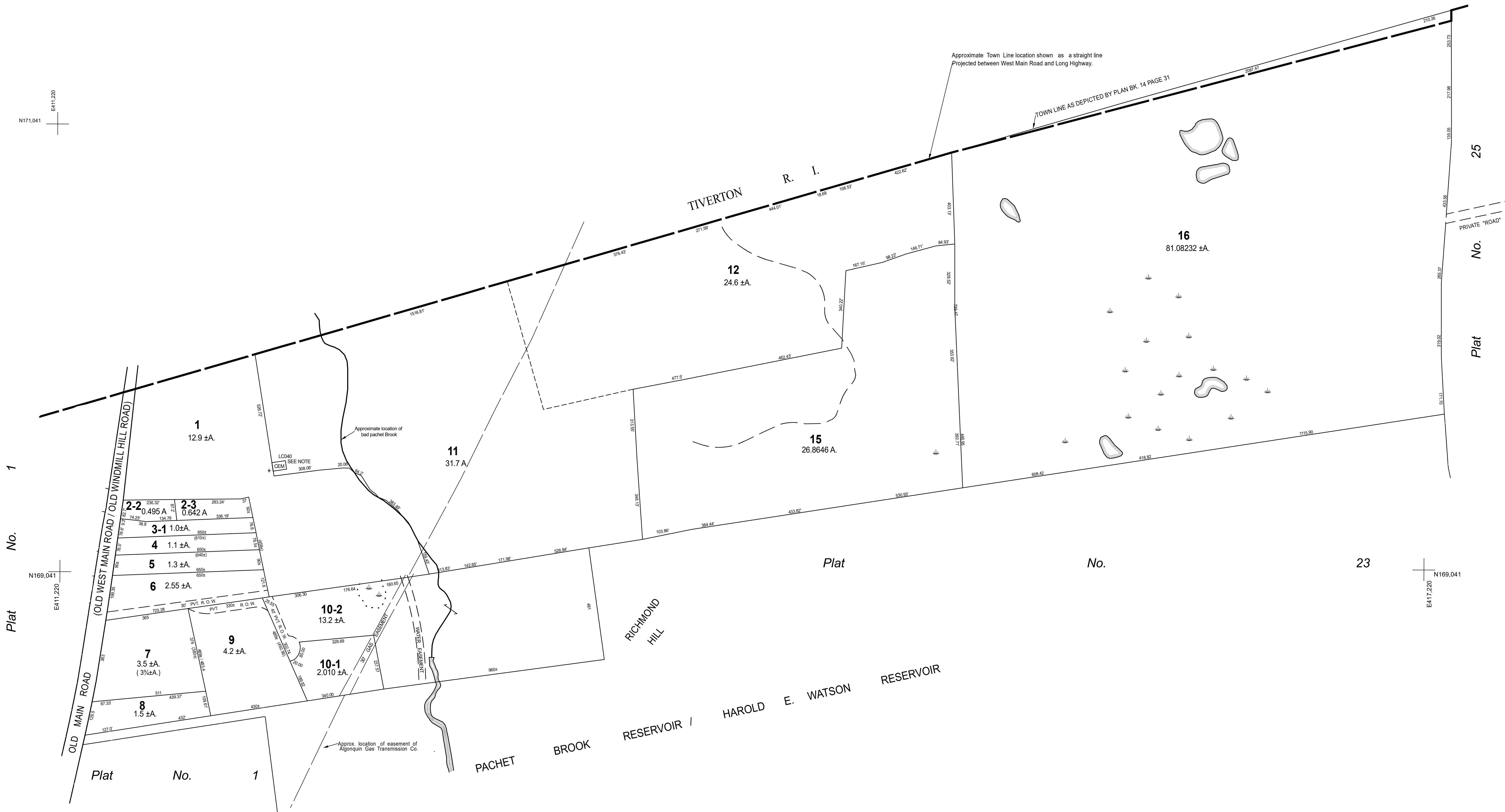


N171,041
E411,220

E417,220
N172,041

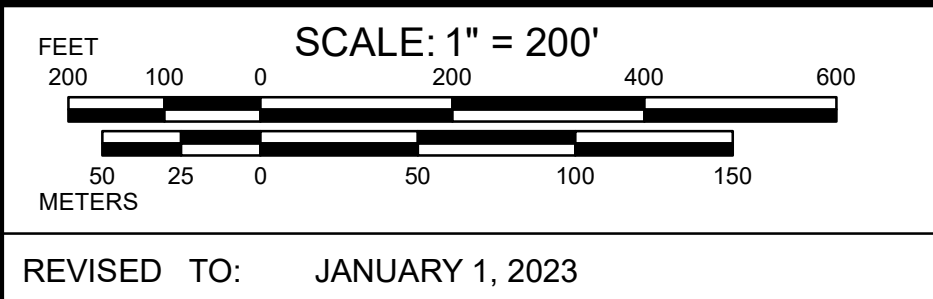


NOTE:
The location of this cemetery is by using GPS technology may be approximate, and may not meet Map Accuracy Standards. There is no intent to indicate its actual extent and configuration. Last revision to master : 2008 (FEB '08) (MAR '12)

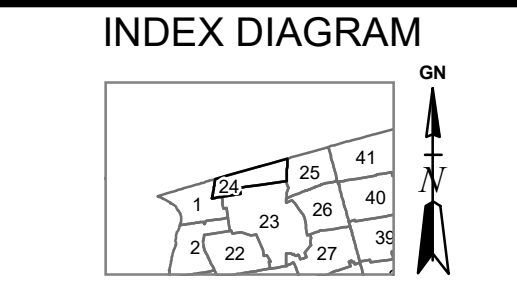
THIS MAP IS FOR ASSESSMENT PURPOSES. IT IS NOT VALID FOR LEGAL DESCRIPTION OR CONVEYANCE.
THE HORIZONTAL DATUM IS THE RHODE ISLAND STATE PLANE COORDINATE SYSTEM, NAD 83.
ORIGINAL MAPPING BY STANLEY ENGINEERING, INC.

REVISED & REPRINTED BY
CAI Technologies
Precision Mapping, Geospatial Solutions.
11 Pleasant Street, Littleton, NH 03561
800.322.4540 - www.cai-tech.com

LEGEND	
PARCEL NUMBER	7-2
PARCEL AREA	23,000 / 2.53 A
RECORD DIMENSION	100
SCALED DIMENSION	100 ±A
WATER	
BUSINESS	
EASEMENT	
RIGHT OF WAY/ACCESS	
COMMON OWNERSHIP	
WETLANDS	



PROPERTY MAPS
LITTLE COMPTON
RHODE ISLAND



MAP NO.
24